

00	09/02/2024	DOCUMENTO TECNICO	ING. F.RAPICAVOLI	ING. F.RAPICAVOLI	ING. F.RAPICAVOLI
REVISIONE	DATA	DESCRIZIONE	PREPARATO	CONTROLLATO	VALIDATO



CODICE IDENTIFICATIVO ELABORATO

27-PD.00

SOCIETÀ PROPONENTE

TIMBRO E FIRMA



CERO ITALY PROJECTS 1 S.R.L.
Via MELCHIORRE GIOIA 8, 20124 (MI)
P.IVA 12517980962
PEC: ceroitalyprojects1@legalmail.it

TITOLO INIZIATIVA

PROGETTO PER LA REALIZZAZIONE DI UN IMPIANTO AGRIVOLTAICO DENOMINATO " SAN GIULIANO ",
DI POTENZA NOMINALE PARI A 80MW INTEGRATO DA UN SISTEMA DI ACCUMULO DA 100MW,
SITO NEL COMUNE DI BUTERA (CL)

SOCIETÀ PROGETTAZIONE

TIMBRO E FIRMA TECNICO ABILITATO

ETERNA S.R.L.
Via Manganelli 20/g
95030 Nicolosi (ct)
tel: 095914116 - cell: 3339533392
P.IVA 05944070878
PEC: eterna@arubapec.it

FORMATO

A4

SCALA

FOGLIO

TITOLO DOCUMENTO

DATASHEET MAIN EQUIPMENT

LIVELLO DI PROGETTAZIONE

PROGETTO DEFINITIVO



FRONT

BACK

TOPBiHiKu7

N-type Bifacial TOPCon Technology

675 W ~ 705 W

CS7N-675 | 680 | 685 | 690 | 695 | 700 | 705TB-AG

MORE POWER



Module power up to 705 W
Module efficiency up to 22.7 %



Up to 85% Power Bifaciality,
more power from the back side



Excellent anti-LeTID & anti-PID performance.
Low power degradation, high energy yield



Lower temperature coefficient (Pmax): -0.29%/°C,
increases energy yield in hot climate



Lower LCOE & system cost

MORE RELIABLE



Minimizes micro-crack impacts



Heavy snow load up to 5400 Pa,
wind load up to 2400 Pa*



Enhanced Product Warranty on Materials and Workmanship*



Linear Power Performance Warranty*

**1st year power degradation no more than 1%
Subsequent annual power degradation no more than 0.4%**

*According to the applicable Canadian Solar Limited Warranty Statement.

MANAGEMENT SYSTEM CERTIFICATES*

ISO 9001: 2015 / Quality management system
ISO 14001: 2015 / Standards for environmental management system
ISO 45001: 2018 / International standards for occupational health & safety
IEC 62941: 2019 / Photovoltaic module manufacturing quality system

PRODUCT CERTIFICATES*

IEC 61215 / IEC 61730 / CE / INMETRO / MCS / UKCA / CGC
CEC listed (US California) / FSEC (US Florida)
UL 61730 / IEC 61701 / IEC 62716 / IEC 60068-2-68
UNI 9177 Reaction to Fire: Class 1 / Take-e-way



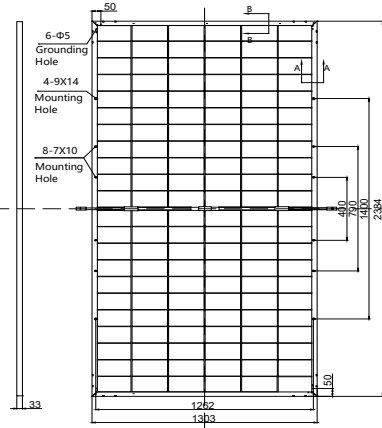
* The specific certificates applicable to different module types and markets will vary, and therefore not all of the certifications listed herein will simultaneously apply to the products you order or use. Please contact your local Canadian Solar sales representative to confirm the specific certificates available for your Product and applicable in the regions in which the products will be used.

CSI Solar Co., Ltd. is committed to providing high quality solar photovoltaic modules, solar energy and battery storage solutions to customers. The company was recognized as the No. 1 module supplier for quality and performance/price ratio in the IHS Module Customer Insight Survey. Over the past 22 years, it has successfully delivered over 100 GW of premium-quality solar modules across the world.

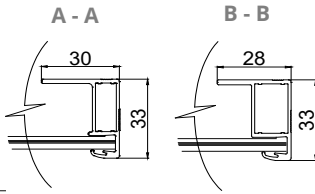
* For detailed information, please refer to the Installation Manual.

ENGINEERING DRAWING (mm)

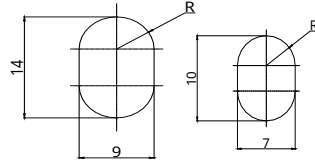
Rear View



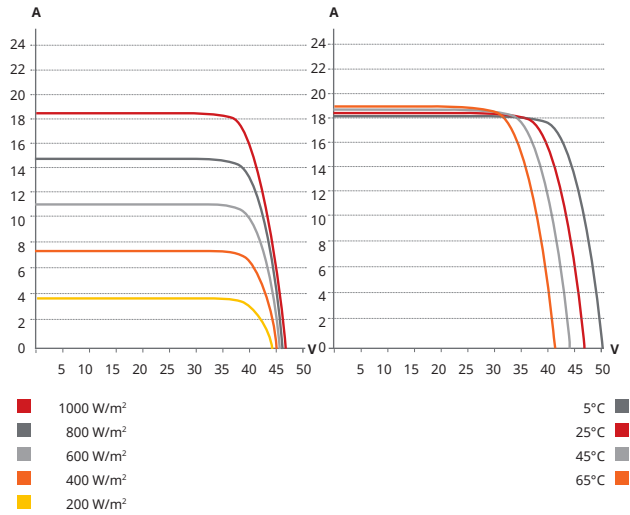
Frame Cross Section



Mounting Hole



CS7N-680TB-AG / I-V CURVES



ELECTRICAL DATA | STC*

	Nominal Max. Power (Pmax)	Opt. Operating Voltage (Vmp)	Opt. Operating Current (Imp)	Open Circuit Voltage (Voc)	Short Circuit Current (Isc)	Module Efficiency
CS7N-675TB-AG	675 W	39.0 V	17.31 A	46.9 V	18.24 A	21.7%
Bifacial Gain**	5%	709 W	39.0 V	18.19 A	19.15 A	22.8%
	10%	743 W	39.0 V	19.04 A	20.06 A	23.9%
	20%	810 W	39.0 V	20.77 A	21.89 A	26.1%
CS7N-680TB-AG	680 W	39.2 V	17.35 A	47.1 V	18.29 A	21.9%
Bifacial Gain**	5%	714 W	39.2 V	18.22 A	19.20 A	23.0%
	10%	748 W	39.2 V	19.09 A	20.12 A	24.1%
	20%	816 W	39.2 V	20.82 A	21.95 A	26.3%
CS7N-685TB-AG	685 W	39.4 V	17.39 A	47.3 V	18.34 A	22.1%
Bifacial Gain**	5%	719 W	39.4 V	18.26 A	19.26 A	23.1%
	10%	754 W	39.4 V	19.14 A	20.17 A	24.3%
	20%	822 W	39.4 V	20.87 A	22.01 A	26.5%
CS7N-690TB-AG	690 W	39.6 V	17.43 A	47.5 V	18.39 A	22.2%
Bifacial Gain**	5%	725 W	39.6 V	18.31 A	19.31 A	23.3%
	10%	759 W	39.6 V	19.17 A	20.23 A	24.4%
	20%	828 W	39.6 V	20.92 A	22.07 A	26.7%
CS7N-695TB-AG	695 W	39.8 V	17.47 A	47.7 V	18.44 A	22.4%
Bifacial Gain**	5%	730 W	39.8 V	18.34 A	19.36 A	23.5%
	10%	765 W	39.8 V	20.18 A	20.28 A	24.6%
	20%	834 W	39.8 V	20.96 A	22.13 A	26.8%
CS7N-700TB-AG	700 W	40.0 V	17.51 A	47.9 V	18.49 A	22.5%
Bifacial Gain**	5%	735 W	40.0 V	18.39 A	19.41 A	23.7%
	10%	770 W	40.0 V	20.22 A	20.34 A	24.8%
	20%	840 W	40.0 V	21.01 A	22.19 A	27.0%
CS7N-705TB-AG	705 W	40.2 V	17.55 A	48.1 V	18.54 A	22.7%
Bifacial Gain**	5%	740 W	40.2 V	18.43 A	19.47 A	23.8%
	10%	776 W	40.2 V	20.27 A	20.39 A	25.0%
	20%	846 W	40.2 V	21.06 A	22.25 A	27.2%

* Under Standard Test Conditions (STC) of irradiance of 1000 W/m², spectrum AM 1.5 and cell temperature of 25°C.
** Bifacial Gain: The additional gain from the back side compared to the power of the front side at the standard test condition. It depends on mounting (structure, height, tilt angle etc.) and albedo of the ground.

ELECTRICAL DATA | NMOT*

	Nominal Max. Power (Pmax)	Opt. Operating Voltage (Vmp)	Opt. Operating Current (Imp)	Open Circuit Voltage (Voc)	Short Circuit Current (Isc)
CS7N-675TB-AG	510 W	36.9 V	13.84 A	44.4 V	14.71 A
CS7N-680TB-AG	514 W	37.1 V	13.88 A	44.6 V	14.75 A
CS7N-685TB-AG	518 W	37.2 V	13.91 A	44.8 V	14.79 A
CS7N-690TB-AG	522 W	37.4 V	13.94 A	45.0 V	14.83 A
CS7N-695TB-AG	526 W	37.6 V	13.97 A	45.2 V	14.87 A
CS7N-700TB-AG	529 W	37.8 V	14.00 A	45.4 V	14.91 A
CS7N-705TB-AG	533 W	38.0 V	14.03 A	45.5 V	14.95 A

* Under Nominal Module Operating Temperature (NMOT), irradiance of 800 W/m², spectrum AM 1.5, ambient temperature 20°C, wind speed 1 m/s.

MECHANICAL DATA

Specification	Data
Cell Type	TOPCon cells
Cell Arrangement	132 [2 x (11 x 6)]
Dimensions	2384 x 1303 x 33 mm (93.9 x 51.3 x 1.30 in)
Weight	37.8 kg (83.3 lbs)
Front Glass	2.0 mm heat strengthened glass with anti-reflective coating
Back Glass	2.0 mm heat strengthened glass
Frame	Anodized aluminium alloy
J-Box	IP68, 3 bypass diodes
Cable	4.0 mm ² (IEC), 12 AWG (UL)
Cable Length (Including Connector)	410 mm (16.1 in) (+) / 250 mm (9.8 in) (-) or customized length*
Connector	T6 or MC4-EVO2 or MC4-EVO2A
Per Pallet	33 pieces
Per Container (40' HQ)	594 pieces or 495 pieces (only for US & Canada)

* For detailed information, please contact your local Canadian Solar sales and technical representatives.

ELECTRICAL DATA

Operating Temperature	-40°C ~ +85°C
Max. System Voltage	1500 V (IEC/UL) or 1000 V (IEC/UL)
Module Fire Performance	TYPE 29 (UL 61730) or CLASS C (IEC61730)
Max. Series Fuse Rating	35 A
Application Classification	Class A
Power Tolerance	0 ~ + 10 W
Power Bifaciality*	80 %

* Power Bifaciality = $\frac{P_{max_{rear}}}{P_{max_{front}}}$, both $P_{max_{rear}}$ and $P_{max_{front}}$ are tested under STC, Bifaciality Tolerance: ± 5 %

* The specifications and key features contained in this datasheet may deviate slightly from our actual products due to the on-going innovation and product enhancement. CSI Solar Co., Ltd. reserves the right to make necessary adjustment to the information described herein at any time without further notice.
Please be kindly advised that PV modules should be handled and installed by qualified people who have professional skills and please carefully read the safety and installation instructions before using our PV modules.

TEMPERATURE CHARACTERISTICS

Specification	Data
Temperature Coefficient (Pmax)	-0.29 % / °C
Temperature Coefficient (Voc)	-0.25 % / °C
Temperature Coefficient (Isc)	0.05 % / °C
Nominal Module Operating Temperature	41 ± 3°C

PARTNER SECTION



SG1100UD

Outdoor Inverter for 1500 Vdc System



HIGH YIELD

- Advanced three-level technology, max. inverter efficiency 99 %
- Effective cooling, full power operation at 40 °C



SMART O&M

- Integrated zone monitoring function for online analysis and trouble shooting
- Modular design, easy for maintenance



SAVED INVESTMENT

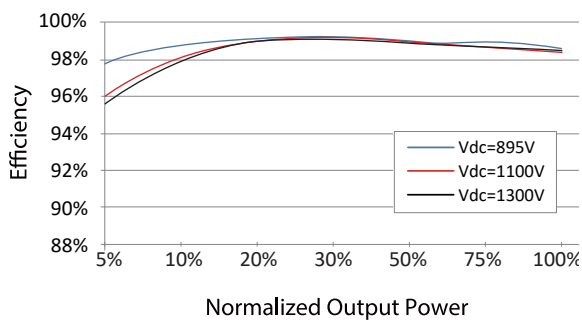
- Low transportation and installation cost due to outdoor design
- DC 1500 V system, low system cost
- Q at night function optional



GRID SUPPORT

- Compliance with standards: IEC 61727, IEC 62116
- Low / High voltage ride through (L/HVRT)
- Active & reactive power control and power ramp rate control

EFFICIENCY CURVE



Type designation	SG1100UD
Input (DC)	
Max. PV input voltage	1500 V
Min. PV input voltage / Startup input voltage	895 V / 905 V
MPP voltage range	895 – 1500 V
No. of independent MPP inputs	1
No. of DC inputs	5(optional: 6/7 inputs negative grounding)
Max. PV input current	1435 A
Max. DC short-circuit current	5000 A
PV array configuration	Negative grounding or floating
Output (AC)	
AC output power	1100 kVA @ 40 °C, 1265 kVA @ 20 °C
Max. AC output current	1160 A
Nominal AC voltage	630 V
AC voltage range	536 – 693 V
Nominal grid frequency / Grid frequency range	50 Hz / 45 – 55 Hz, 60 Hz / 55 – 65 Hz
Harmonic (THD)	< 3 % (at nominal power)
Power factor at nominal power / Adjustable power factor	> 0.99 / 0.8 leading – 0.8 lagging
Feed-in phases / AC connection	3 / 3-PE
Efficiency	
Max. efficiency/European efficiency	99.0 %/98.7 %
Protection & Function	
DC input protection	Load break switch + fuse
AC output protection	Circuit breaker
Overvoltage protection	DC Type II / AC Type II
Grid monitoring / Ground fault monitoring	Yes / Yes
Insulation monitoring	Yes
Surge protection	Yes
Q at night function	Optional
General Data	
Dimensions (W*H*D)*	700*2140*1700 mm
Weight*	800 kg
Topology	Transformerless
Degree of protection	IP65
Night power consumption	< 200 W
Operating ambient temperature range	-35 to +60 °C (> 40 °C derating)
Allowable relative humidity range	0 – 100 %
Cooling method	Temperature controlled forced air cooling
Max. operating altitude	4000 m (> 3000 m derating)
Display	LED Indicators, WLAN+WebHMI
Communication	Standard: RS485, Ethernet; Optional: optical fiber
Compliance	CE, IEC 62109, IEC 61727, IEC 62116, IEC 62109, IEC 61727, IEC 62116, IEC 60068, IEC 61683, VDE-AR-N 4110:2018, VDE-AR-N 4120:2018, EN 50549-1/2, UNE 206007-1:2013, P.O.12.3, UTE C15-712-1:2013
Grid support	Q at night function (optional), L/HVRT, active & reactive power control and power ramp rate control, Q-U control, P-f control

*: The actual product received shall prevail.

PVS-16MH/18MH/ 20MH/24MH

PV combiner box for 1500 Vdc system



EFFICIENT AND SAFE

- 1500V-Specific PV fuse, both positive and negative terminal
- 1500V-Specific PV SPD with fault alarm
- String current and voltage monitoring
- Main load switch state monitoring (optional)



FLEXIBLE

- Optional IP67 protection, meeting the outdoor installation and usage requirements
- Self-powered power supply with lightning protection
- Output cable cross section area 120 – 400 mm² (max. 400 mm² Al cable)
- PG Gland / MC4 terminal connector



QUALIFIED

- CE
- Highly optimize the system wiring
- Modular design, easy and quick maintenance



Type Designation	PVS-16MH	PVS-18MH	PVS-20MH	PVS-24MH
Parameters				
Max. PV string voltage	1500 V			
Max. PV string parallel inputs	16	18	20	24
Max. string input current	21A	20A	18.5A	15.5A
Max. output current	336A	360A	370A	372A
SPD	1500 Vdc Type II (optional: Type I+II)			
Input terminal type	PG Gland / MC4 terminal			
Output terminal type	120 – 400 mm ²			
Protection class	IP65 / IP67 (optional)			
Environment temperature	-35 to 60 °C			
Environment humidity	0 – 95%			
Dimensions (W*H*D)	950*730*275 mm			
Weight	40 kg	40 kg	42 kg	44 kg
Switch disconnect handle	Internal handle			
Material	SMC			
Standard Accessories				
DC output load switch	Yes			
PV specific application SPD	Yes			
Optional Accessories				
String current and bus voltage monitoring	Optional			
RS485 communication port	Optional			
PV SPD failure monitoring	Optional			
Monitoring for load switch state	Optional			
Operator access areas IP2X	Optional			
Parallel arc fault circuit interrupter	Optional			
Wireless communication	Optional			



FS DUO

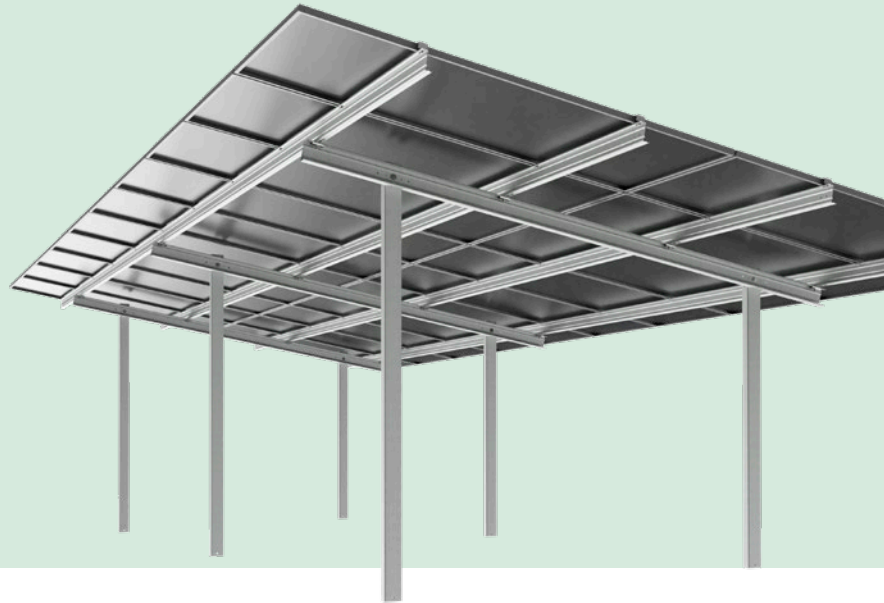
PRODUCT SHEET

Tried and tested two-post system made of high-strength steel

Minimise installation time with an easy-to-install design

Flexible foundation options

Excellent material efficiency



THE FIRST CHOICE FOR LARGER MODULE AREAS

FS Duo is ideal for large multi-row module tables. Each support has two pile-driven post foundations which are combined with Z-purlins to give a stable and load-bearing PV mounting structure for module arrays with larger spans.

ASSEMBLY IN THE SHORTEST POSSIBLE TIME

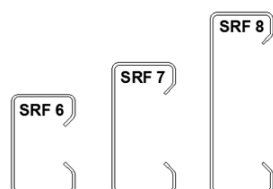
The design allows quick module installation with either clamps from above or with screws from below. Simpler connections and fewer components further reduce assembly time and effort.

ADAPTABLE TO TOPOGRAPHICAL CONDITIONS

FS Duo is suitable for all terrains and any project-specific adjustments can be easily made by Schletter's in-house engineers.

A geological survey of the subsoil and 3D terrain analysis on site form part of the detailed and individual project planning process.

Load testing on the driven piles and chemical analyses determine the load bearing capacity of the soil to create a soil profile.



Highly efficient post geometries that are materially cost-effective

Optimal system stability under wind and snow loads is ensured through the selection of galvanised posts from a variety of size classes. The pile-driven posts we develop ensure excellent integration with the ground while maintaining maximum rigidity against bending. When necessary, hybrid solutions are also offered.

The system takes into account all international standards and can withstand any wind and snow loads on site through the optimised design.

FS DUO

TECHNICAL DETAILS

Scope of application	<ul style="list-style-type: none"> • Open area system with two pile-driven post foundation supports
Material	<ul style="list-style-type: none"> • Posts: Steel, Z1200 hot-dip galvanized in accordance with DIN EN ISO 1461 or ZM600 coated in accordance with DIN EN 10346 (depending on soil conditions) • Purlins/trusses: Steel, Z600 hot-dip galvanized in accordance with DIN EN ISO 12944-2 or ZM310 coated in accordance with DIN EN 10346 • Module clamps: Aluminium clamps or screw connections according to customer requirements • Fasteners and screws: Zinc flake coated steel or stainless steel • Project-specific adjustments are possible, based on region and according to local standards
Planning aid	<ul style="list-style-type: none"> • Project-specific planning
Structural design	<ul style="list-style-type: none"> • Individual system calculations based on regional data and guidelines • Structural analysis of the terrain based on an external soil survey • 3D terrain model for foundation design and optimisation (optional) • The load assumptions correspond to DIN EN 1991-1 Parts 3 and 4, DIN EN 1990, DIN EN 1999, DIN EN 1993 the regulations of the national annex (UL 2703, ASCE 07-05, ASCE 07-10, ASCE 07-16, ASCE 07-20) • In-house calculations according to 50 different worldwide standards (Eurocode, US Code, IS, SANS, Australian Standard) with our own globally valid structural analysis software • Verification of all structural components based on FEM calculations or according to an empirical test setup (wind tunnel tests)
Module type	<ul style="list-style-type: none"> • Framed modules with a frame thickness of 30-50 mm • Module configuration in any orientation and using any size • Options for large-format or bifacial modules • Options for First Solar modules
Module mounting	<ul style="list-style-type: none"> • Module fastening from above with Rapid clamps (adaptable to any module type) • Module fastening from below with screws (adaptable to any module type) • Integrated grounding of the modules (optional)
Warranty	<ul style="list-style-type: none"> • 10 years in accordance with our Guarantee Terms and Conditions
Supplementary documents	<ul style="list-style-type: none"> • FS Duo Assembly Instructions



FG16R16 - FG16OR16 0,6/1 kV

NON PROPAGANTI LA FIAMMA, NON PROPAGANTI L'INCENDIO, BASSISSIMA EMISSIONE DI FUMI, GAS TOSSICI E CORROSIVI
FLAME RETARDANT, FIRE RETARDANT, VERY LOW EMISSION OF SMOKE, TOXIC AND CORROSIVE GASES



NON PROPAGANTE
LA FIAMMA
FLAME RETARDANT



NON PROPAGANTE
L'INCENDIO
FIRE RETARDANT
CEI EN 20-22 II



RIFERIMENTO NORMATIVO/STANDARD REFERENCE

Costruzione e requisiti elettrici fisici e meccanici/ <i>Structure and electrical, physical, mechanical requirements</i>	CEI 20-13 IEC 60502-1 CEI UNEL 35318 (energia) CEI UNEL 35322 (Segnalamento)
Direttiva Bassa Tensione/ <i>Low Voltage Directive</i>	2014/35/UE
Direttiva RoHS/ <i>RoHS Directive</i>	2011/65/UE



Le immagini sono puramente illustrative e coperte da copyright ©



REAZIONE AL FUOCO/REACTION TO FIRE

REGOLAMENTO/REGULATION 305/2011/UE

Norma/Standard	EN 50575:2014+A1:2016
Classe/Low Voltage Directive	C _{ca} -s3, d1, a3
Classificazione/Classification (CEI UNEL 35016)	EN 13501-6
Non propagazione della fiamma verticale/ <i>Not Flame propagation</i>	EN 50399
Gas corrosivi e alogenidrici/ <i>Corrosive gases or halogens</i>	EN 60332-1-2
Densità dei fumi/Smoke density	EN 60754-2

Cavo commercializzato da produttori con classificazione CPR

FG16R16 - FG16OR16 0,6/1 kV

DESCRIZIONE:

Cavo con isolamento in gomma di qualità G16, sotto guaina di PVC qualità R16 a ridotta emissione di gas corrosivi. Buona resistenza agli oli e ai grassi industriali. Buon comportamento alle basse temperature

CARATTERISTICHE FUNZIONALI:

- Tensione nominale U_0/U : 600/1000 V c.a.
- 1500 V c.c.
- Tensione Massima U_m : 1200 V c.a.
- 1800 V c.a.
- Tensione di prova industriale: 4000 V
- Temperatura massima di esercizio: 90°C
- Temperatura minima di esercizio: -15°C (in assenza di sollecitazioni meccaniche)
- Temperatura minima di posa: 0°C
- Temperatura massima di corto circuito: 250°C
- Sforzo massimo di trazione (consigliato): 50 N/mm² di sezione del rame.
- Raggio minimo di curvatura: 4 volte il diametro del cavo.

CONDIZIONI DI IMPIEGO:

Riferimento Guida CEI 20-67 per quanto applicabile:

Il cavo è adatto per l'alimentazione di energia nell'industria, nei cantieri, nell'edilizia residenziale. Per posa fissa all'interno, all'esterno; per posa interrata diretta e indiretta. Adatto all'installazione su murature e strutture metalliche, su passarelle, tubazioni, canalette e sistemi similari.

Riferimento Regolamento Prodotti da Costruzione 305/2011 EU e Norma EN 50575:

Date le proprietà di limitare lo sviluppo del fuoco e l'emissione di calore, il cavo è adatto per l'alimentazione di energia elettrica nelle costruzioni ed altre opere di ingegneria civile.

DESCRIPTION:

Cable insulated with rubber G16 quality, with PVC R16 sheath, with reduced corrosive gas emission. Good resistance to grease and mineral oils. Good flexibility and behaviour at low temperatures.

FUNCTIONAL CHARACTERISTICS

- Rated voltage U_m : 600/1000 V a.c.
- 1500 V c.c.
- Max. rated voltage U_m : 1200 V a.c.
- 1800 V c.c. also earthwards
- Rated voltage test: 4000 V
- Maximum operating temperature: 90°C
- Minimum operating temperature: -15°C (without mechanical stress)
- Minimum installation temperature: 0°C
- Maximum short circuit temperature: 250°C
- Maximum tensile stress (recommended): 50 N/mm² of the cross-section of the copper.
- Minimum bending radius: 4 x cable diameter.

USE AND INSTALLATION

Reference Guidance CEI 20-67 as far as applicable:

Cable suitable for energy supply in industry, building sites and construction industry. For fixed wiring indoors and outdoors; for direct and indirect underground wiring. Suitable for installation on walls, metal structures, cable trays, pipes, wiring holders and similar devices.

Reference Construction Products Regulation 305/2011 EU and Standard EN 50575:

Given its properties of limiting the development of fire and heat emission, the cable is suitable for the supply of electricity in buildings and other civil engineering works.

COSTRUZIONE DEL CAVO / CABLE CONSTRUCTION



CONDUTTORE

Materiale:

Rame rosso, formazione flessibile, classe 5

CONDUCTOR

Material: Copper flexible wire, class 5



ISOLAMENTO

Materiale: Gomma, qualità G16

INSULATION

Material: Rubber compound, G16 quality



CORDATURA TOTALE

Tipo: i conduttori isolati sono cordati insieme

TOTAL CABLING

Type: The cores are stranded together in concentric lay



RIEMPITIVO

Materiale: termoplastico, penetrante tra le anime (solo nei cavi multipolari)

FILLER

Material: Thermoplastic, penetrating between the cores (only in multi-core cables)



GUAINA

Materiale: PVC, qualità R16
Colore: Grigio

SHEATH

Material: PVC, R16 quality
Colour: Grey

FG16R16 - FG16OR16 0,6/1 kV

Unipolari/Single core

Formazione	Ø indicativo conduttore	Spessore medio isolante	Spessore medio guaina	Ø esterno massimo	Peso indicativo cavo	Resistenza elettrica max a	Portata di corrente					
Size	Approx. conduct. Ø	Average insulation thickness	Average sheath thickness	Max outer Ø	Indicative cable weight	Max electrical resistance at 20° C	Current rating					
									interrato a Underground at 20° C		in tubo interrato a In underground pipe at 20° C	
n° x mm ²	mm	mm	mm	mm	kg/km	Ω/km	in aria a in air at	in tubo in aria a in pipe in air at	K=1	K=1,5	K=1	K=1,5
							30° C	30° C				
1 x 1,5	1,5	0,7	1,4	8,2	55,0	13,3	24,0	20,0	26,0	24,0	23,0	21,0
1 x 2,5	2,0	0,7	1,4	8,7	66,0	7,98	33,0	28,0	34,0	31,0	29,0	27,0
1 x 4	2,5	0,7	1,4	9,3	84,0	4,95	45,0	37,0	43,0	40,0	38,0	35,0
1 x 6	3,0	0,7	1,4	9,9	110,0	3,30	58,0	48,0	55,0	51,0	48,0	44,0
1 x 10	4,0	0,7	1,4	10,9	150,0	1,91	80,0	66,0	73,0	68,0	64,0	59,0
1 x 16	5,0	0,7	1,4	11,4	220,0	1,21	107,0	88,0	96,0	89,0	83,0	77,0
1 x 25	6,2	0,9	1,4	13,2	310,0	0,798	141,0	117,0	124,0	115,0	108,0	100,0
1 x 35	7,4	0,9	1,4	14,6	410,0	0,554	176,0	144,0	150,0	139,0	131,0	121,0
1 x 50	8,9	1,0	1,4	16,4	560,0	0,386	216,0	175,0	186,0	173,0	162,0	150,0
1 x 70	10,5	1,1	1,4	18,3	760,0	0,272	279,0	222,0	229,0	212,0	199,0	184,0
1 x 95	12,2	1,1	1,5	20,4	960,0	0,206	342,0	269,0	270,0	250,0	234,0	217,0
1 x 120	13,8	1,2	1,5	22,4	1210,0	0,161	400,0	312,0	312,0	289,0	271,0	251,0
1 x 150	15,4	1,4	1,6	24,8	1480,0	0,129	464,0	355,0	356,0	330,0	310,0	287,0
1 x 185	16,9	1,6	1,6	27,0	1790,0	0,106	533,0	417,0	401,0	371,0	349,0	323,0
1 x 240	19,5	1,7	1,7	30,2	2320,0	0,0801	634,0	490,0	471,0	436,0	409,0	379,0
1 x 300	23,0	1,8	1,8	33,0	2840,0	0,0641	736,0	-	533,0	493,0	463,0	429,0
1 x 400	26,5	2,0	1,9	36,5	3735,0	0,0486	868,0	-	621,0	575,0	540,0	500,0

N.B. I valori di portata di corrente sono riferiti a:

- n°3 conduttori attivi
- profondità di posa 0,8 m per i cavi interrati

Permissible current rating values are according to:

- three-phase circuit
- laying depth of 0,8 m for buried cables

N.B. K=1: resistività termica del terreno 1,0 K.m/W

K=1,5: resistività termica del terreno 1,5 K.m/W

N.B. K=1: thermal resistivity 1,0 K.m/W

K=1,5: thermal resistivity 1,5 K.m/W

FG16R16 - FG16OR16 0,6/1 kV

Bipolari/2 cores

Formazione Size	Ø indicativo conduttore	Spessore medio isolante	Spessore medio guaina	Ø esterno massimo	Peso indicativo cavo	Resistenza elettrica max a	Portata di corrente							
	Approx. conduct. Ø	Average insulation thickness	Average sheath thickness	Max outer Ø	Indicative cable weight	Max electrical resistance at 20° C	Current rating							
							in aria a		in tubo in aria a		interrato a		in tubo interrato a	
							in air at		in pipe in air at		Underground at		In underground pipe at	
							30° C		30° C		20° C		20° C	
											K=1		K=1,5	
2 x 1,5	1,5	0,7	1,8	12,0	130,0	13,30	26,0	22,0	28,0	26,0	25,0	23,0		
2 x 2,5	2,0	0,7	1,8	13,0	165,0	7,98	36,0	30,0	37,0	35,0	32,0	30,0		
2 x 4	2,5	0,7	1,8	14,2	210,0	4,95	49,0	40,0	48,0	45,0	41,0	39,0		
2 x 6	3,0	0,7	1,8	15,4	270,0	3,30	63,0	51,0	60,0	56,0	52,0	49,0		
2 x 10	4,0	0,7	1,8	17,3	390,0	1,91	86,0	69,0	80,0	76,0	70,0	66,0		
2 x 16	5,0	0,7	1,8	19,4	520,0	1,21	115,0	91,0	105,0	99,0	91,0	86,0		
2 x 25	6,2	0,9	1,8	23,0	765,0	0,798	149,0	119,0	135,0	128,0	118,0	111,0		
2 x 35	7,4	0,9	1,8	25,7	1020,0	0,554	185,0	140,0	166,0	156,0	144,0	136,0		
2 x 50	8,9	1,0	1,8	29,3	1400,0	0,386	225,0	175,0	205,0	193,0	178,0	168,0		
2 x 70	10,5	1,1	1,8	33,1	2130,0	0,272								
2 x 120	13,8	1,2	1,8	41,5	3420,0	0,161								

N.B. I valori di portata di corrente sono riferiti a:

- n°3 conduttori attivi
- profondità di posa 0,8 m per i cavi interrati

Permissible current rating values are according to:

- three-phase circuit
- laying depth of 0,8 m for buried cables

N.B. K=1: resistività termica del terreno 1,0 K.m/W

K=1,5: resistività termica del terreno 1,5 K.m/W

N.B. K=1: thermal resistivity 1,0 K.m/W

K=1,5: thermal resistivity 1,5 K.m/W

Tripolari/3 cores

3 x 1,5	1,5	0,7	1,8	12,5	150,0	13,30	23,0	19,0	23,0	22,0	20,0	19,0		
3 x 2,5	2,0	0,7	1,8	13,6	190,0	7,98	32,0	26,0	30,0	29,0	27,0	25,0		
3 x 4	2,5	0,7	1,8	14,9	250,0	4,95	42,0	35,0	39,0	37,0	34,0	32,0		
3 x 6	3,0	0,7	1,8	16,2	320,0	3,30	54,0	44,0	50,0	47,0	43,0	41,0		
3 x 10	4,0	0,7	1,8	18,2	470,0	1,91	75,0	60,0	67,0	63,0	58,0	55,0		
3 x 16	5,0	0,7	1,8	20,6	640,0	1,21	100,0	80,0	88,0	83,0	76,0	72,0		
3 x 25	6,2	0,9	1,8	24,5	960,0	0,798	127,0	105,0	113,0	107,0	99,0	93,0		
3 x 35	7,4	0,9	1,8	27,3	1290,0	0,554	158,0	128,0	139,0	131,0	121,0	114,0		
3 x 50	8,9	1,0	1,8	31,2	1785,0	0,386	192,0	154,0	172,0	162,0	149,0	141,0		
3 x 70	10,5	1,1	1,9	35,6	2700,0	0,272	246,0	194,0	212,0	200,0	184,0	174,0		
3 x 95	12,2	1,1	2,0	40,0	3410,0	0,206	298,0	233,0	251,0	237,0	218,0	206,0		
3 x 120	13,8	1,2	2,1	44,4	4340,0	0,161	346,0	268,0	290,0	274,0	252,0	238,0		
3 x 150	15,4	1,4	2,3	49,5	5404,0	0,129	399,0	300,0	332,0	313,0	288,0	272,0		
3 x 185	16,9	1,6	2,4	55,2	6550,0	0,106	456,0	340,0	373,0	352,0	324,0	306,0		
3 x 240	19,5	1,7	2,6	61,9	8475,0	0,0801	538,0	398,0	439,0	414,0	382,0	360,0		
3 x 300	23,0	1,8	2,8	68,0	10440,0	0,0641	621,0	-	-	-	-	-		

N.B. I valori di portata di corrente sono riferiti a: n°3 conduttori attivi - Profondità di posa 0,8 m per i cavi interrati

N.B. Current rating values are referred to: n° 3 loaded conductors - Installation depth for underground cables 0,8 m

N.B. K=1: resistività termica del terreno 1,0 K.m/W

K=1,5: resistività termica del terreno 1,5 K.m/W

N.B. K=1: thermal resistivity 1,0 K.m/W

K=1,5: thermal resistivity 1,5 K.m/W

FG16R16 - FG16OR16 0,6/1 kV

Quadripolari/4 cores

Formazione Size	Ø indicativo conduttore Approx. conduct. Ø	Spessore medio isolante Average insulation thickness	Spessore medio guaina Average shea- th thickness	Ø esterno massimo Max outer Ø	Peso indicativo cavo Indicative cable weight	Resistenza elettrica max a Max electrical resistance at 20° C	Portata di corrente Current rating A					
							in aria a in air at 30° C	in tubo in aria a in pipe in air at 30°C	interrato a Underground at 20° C		in tubo interrato a In underground pipe at 20°C	
n° x mm ²	mm	mm	mm	mm	kg/km	Ω/km	K=1	K=1,5	K=1	K=1,5		
4 x 1,5	1,5	0,7	1,8	13,4	170,0	13,30	23,0	19,0	23,0	22,0	20,0	19,0
4 x 2,5	2,0	0,7	1,8	14,6	220,0	7,98	32,0	26,0	30,0	29,0	27,0	25,0
4 x 4	2,5	0,7	1,8	16,0	295,0	4,95	42,0	35,0	39,0	37,0	34,0	32,0
4 x 6	3,0	0,7	1,8	17,5	385,0	3,30	54,0	44,0	50,0	47,0	43,0	41,0
4 x 10	4,0	0,7	1,8	19,8	575,0	1,91	75,0	60,0	67,0	63,0	58,0	55,0
4 x 16	5,0	0,7	1,8	22,4	795,0	1,21	100,0	80,0	88,0	83,0	76,0	72,0
4 x 25	6,2	0,9	1,8	26,8	1.205,0	0,780	127,0	105,0	113,0	107,0	99,0	93,0
3 x 35 + 25	7,4/6,2	0,9/0,9	1,8	29,2	1.535,0	0,554/0,780	158,0	128,0	139,0	131,0	121,0	114,0
3 x 50 + 25	8,9/6,2	1,0/0,9	1,8	32,4	2.020,0	0,386/0,780	192,0	154,0	172,0	162,0	149,0	141,0
3 x 70 + 35	10,5/7,4	1,1/0,9	1,9	37,0	3.030,0	0,272/0,554	246,0	194,0	212,0	200,0	184,0	174,0
3 x 95 + 50	12,2/8,9	1,1/1,0	2,1	42,0	3.915,0	0,206/0,386	298,0	233,0	251,0	237,0	218,0	206,0
3 x 120 + 70	13,8/10,5	1,2/1,1	2,2	46,9	5.040,0	0,161/0,272	346,0	268,0	290,0	274,0	252,0	238,0
3 x 150 + 95	15,4/12,2	1,4/1,1	2,4	52,5	6.300,0	0,129/0,206	399,0	300,0	332,0	313,0	288,0	272,0
3 x 185 + 95	16,9/12,2	1,6/1,1	2,5	57,3	8.325,0	0,106/0,206	456,0	340,0	373,0	352,0	324,0	306,0
3 x 240 + 150	19,5/15,4	1,7/1,4	2,7	65,5	9.930,0	0,0801/0,129	538,0	398,0	439,0	414,0	382,0	360,0

Pentapolari/5 cores

5G1,5	1,5	0,7	1,8	14,4	195,0	13,30	23,0	19,0	23,0	22,0	20,0	19,0
5G2,5	2,0	0,7	1,8	15,6	260,0	7,98	32,0	26,0	30,0	29,0	27,0	25,0
5G4	2,5	0,7	1,8	17,3	345,0	4,95	42,0	35,0	39,0	37,0	34,0	32,0
5G6	3,0	0,7	1,8	18,9	455,0	3,30	54,0	44,0	50,0	47,0	43,0	41,0
5G10	4,0	0,7	1,8	21,5	680,0	1,91	75,0	60,0	67,0	63,0	58,0	55,0
5G16	5,0	0,7	1,8	24,4	970,0	1,21	100,0	80,0	88,0	83,0	76,0	72,0
5G25	6,2	0,9	1,8	29,3	1.470,0	0,780	127,0	105,0	113,0	107,0	99,0	93,0
5G35	7,4	0,9	1,8	32,8	1.990,0	0,554	158,0	128,0	139,0	131,0	121,0	114,0
5G50	8,9	1,0	2,0	38,2	3.030,0	0,386	192,0	154,0	172,0	162,0	149,0	141,0

N.B. I valori di portata di corrente sono riferiti a: n°3 conduttori attivi - Profondità di posa 0,8 m per i cavi interrati
 N.B. Current rating values are referred to: n° 3 loaded conductors - Installation depth for underground cables 0,8 m

N.B. K=1: resistività termica del terreno 1,0 K.m/W - K=1,5: resistività termica del terreno 1,5 K.m/W
 N.B. K=1: thermal resistivity 1,0 K.m/W - K=1,5: thermal resistivity 1,5 K.m/W

Multipli, Segnalamento e comando/Multi-cores, Signal and control

7G1,5	1,5	0,7	1,8	15,4	260,0	13,30	13,0	11,5	18,5	16,0	-	-
10G1,5	1,5	0,7	1,8	18,7	340,0	13,40	13,0	11,5	18,5	16,0	-	-
12G1,5	1,5	0,7	1,8	19,3	380,0	13,40	11,0	9,5	14,5	12,5	-	-
16G1,5	1,5	0,7	1,8	21,1	480,0	13,40	11,0	9,5	14,5	12,5	-	-
19G1,5	1,5	0,7	1,8	22,1	535,0	13,40	9,0	8,0	13,0	11,5	-	-
24G1,5	1,5	0,7	1,8	25,4	640,0	13,50	9,0	8,0	13,0	11,5	-	-
7G2,5	2,0	0,7	1,8	16,8	381,0	7,98	17,5	15,5	24,0	21,0	-	-
10G2,5	2,0	0,7	1,8	20,6	462,0	8,06	17,5	15,5	24,0	21,0	-	-
12G2,5	2,0	0,7	1,8	21,3	530,0	8,06	13,5	12,0	20,0	17,5	-	-
16G2,5	2,0	0,7	1,8	23,3	670,0	8,06	13,5	12,0	20,0	17,5	-	-
19G2,5	2,0	0,7	1,8	24,5	755,0	8,06	12,0	10,5	16,0	14,0	-	-
24G2,5	2,0	0,7	1,8	28,3	915,0	8,10	12,0	10,5	16,0	14,0	-	-

*Disponibile anche senza conduttore giallo/verde - N.B. I valori di portata di corrente sono riferiti a: tutti i conduttori attivi (eccetto il conduttore giallo/verde) - Profondità di posa 0,8 m per i cavi interrati
 *Available without yellow/green conductor - N.B. Current rating values are referred to: All loaded conductors - Installation depth for underground cables 0,8 m

N.B. K=1: resistività termica del terreno 1,0 K.m/W - K=1,5: resistività termica del terreno 1,5 K.m/W
 N.B. K=1: thermal resistivity 1,0 K.m/W - K=1,5: thermal resistivity 1,5 K.m/W

ARE4H5E
20,8/36kV
1x... SR/0,2

HIGH VOLTAGE POWER CABLES

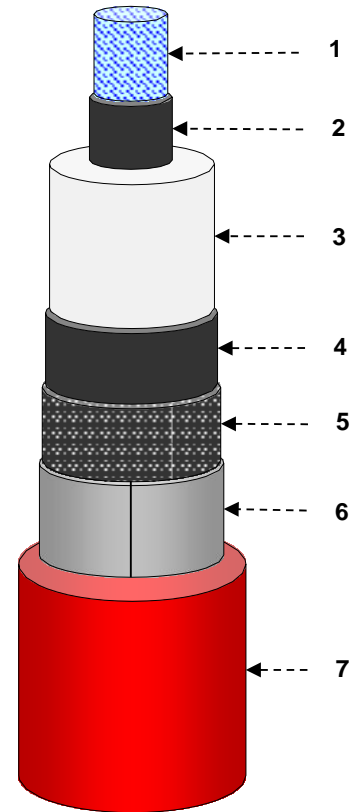
SINGLE CORE CABLES WITH ALUMINIUM CONDUCTOR, REDUCED THICKNESS XLPE INSULATION, ALLUMINIUM TAPE SCREEN AND PE OUTER SHEATH, LONGITUDINAL AND RADIAL WATERTIGHTNESS

APPLICATIONS

In HV energy distribution networks for voltage systems up to **42kV**.
 Suitable for fixed installation indoor or outdoor laying in air or directly or indirectly buried, also in wet location.

FUNCTIONAL CHARACTERISTICS

Rated voltage U_0/U :	20,8/36 kV
Maximum voltage U_m :	42 kV
Test voltage:	2,5 U_0
Max operating temperature of conductor:	90 °C
Max short-circuit temperature:	250 °C (max duration 5 s)
Max short-circuit temperature (screen):	150 °C



CONSTRUCTION

- 1. Conductor**
*stranded, compacted, round **aluminium** - class 2 acc. to IEC 60228*
- 2. Conductor screen**
extruded semiconducting compound
- 3. Insulation**
*extruded **XLPE** compound*
- 4. Insulation screen**
*extruded semiconducting compound - **fully bonded***
- 5. Longitudinal watertightness**
*semiconducting **water blocking tape***
- 6. Metallic screen and radial water barrier**
***aluminium tape** longitudinally applied (nominal thickness = 0,20 mm)*
- 7. Outer sheath**
*extruded **PE** compound - colour: **red***

INSTALLATION DATA

- Max pulling force during laying**
 50 N/mm² (applied on the conductors)
- Min bending radius during laying**
 14 D_{cable} (dynamic condition)
- Min temperature during laying**
 - 25 °C (cable temperature)

STANDARDS

- IEC 60840 where applicable (*testing*)
- Nexans Design
- HD 620 where applicable (*materials*)

MARKING by ink-jet of the following legend:

ARE4H5E 20,8/36kV 1x<S> <meter marking>
 <Year> = year of manufacturing
 <S> = section of the conductor



Longitudinal waterproof



Radial waterproof



Max operating temp. of conductor: **90 °C**



Max short-circuit temperature : **250 °C**



Max short-circuit temperature screen: **150 °C**



Minimum installation temperature: **-25 °C**

ARE4H5E 20,8/36kV 1x...														
Type	Conductor diameter nominal	Insulation		Sheath thickness nominal	Cable		Electrical resistance		X at 50 Hz	C	Current capacity		Short circuit current	
		thickness min	diameter nominal		diameter approx	weight indicative	at 20 °C - d.c. max	at 90 °C - a.c.			in ground at 20 °C	in free air at 30 °C	conductor Tmax 250°C	screen Tmax 150°C
n° x mm ²	mm	mm	mm	mm	mm	kg/km	Ω/km	Ω/km	Ω/km	μF/km	A	A	kA x 1,0 s	kA x 0,5 s
1x120	13,1	7,9	30,7	2,2	39,2	1.260	0,253	0,325	0,125	0,185	254	332	11,3	2,2
1x150	14,3	7,6	31,3	2,2	39,8	1.340	0,206	0,265	0,121	0,201	283	374	14,2	2,2
1x185	16,0	7,4	32,6	2,2	41,2	1.470	0,1640	0,211	0,116	0,221	321	430	17,5	2,3
1x240	18,5	7,1	34,5	2,3	43,4	1.690	0,1250	0,161	0,110	0,252	372	508	22,7	2,3
1x300	20,7	6,8	36,1	2,3	45,0	1.880	0,1000	0,129	0,105	0,283	419	583	28,3	2,4
1x400	23,5	6,9	39,1	2,4	48,3	2.220	0,0778	0,101	0,101	0,308	479	680	37,8	2,6
1x500	26,5	7,0	42,6	2,5	52,2	2.670	0,0605	0,079	0,099	0,337	547	792	47,2	2,9
1x630	30,0	7,1	46,3	2,7	56,4	3.220	0,0469	0,063	0,096	0,367	622	921	59,5	3,0

Note

Laying condition: trefoil formation
depth (m): 0,8
soil thermal resistivity (°Cm/W): 1,5
metallic layers connection: solid bonding (earthed at both ends)

X = phase reactance
C = capacitance

ST2752UX-US

Liquid Cooling Energy Storage System
2 - 8 hour application

Preliminary



LOW COSTS

- Highly integrated ESS for easy transportation and O&M
- All pre-assembled, no battery module handling on site
- 8 hour installation to commission, drop on a pad and make electrical connections



SAFE AND RELIABLE

- Integrated DC/DC converters actively limit fault current
- DC electric circuit safety management includes fast breaking and anti-arc protection
- Multi level battery protection layers formed by discreet standalone systems offer impeccable safety



EFFICIENT AND FLEXIBLE

- Intelligent liquid cooling ensures higher efficiency and longer battery cycle life
- Modular design supports parallel connection and easy system expansion
- IP54 outdoor cabinet and optional C5 anti-corrosion



SMART AND ROBUST

- Fast state monitoring and faults record enables pre-alarm and faults location
- Integrated battery performance monitoring and logging



Type designation	ST2752UX-US
Battery Data	
Cell type	LFP
Battery capacity (BOL)	2752 kWh
Battery voltage range	1160 ~ 1500 V
General Data	
Dimensions of battery unit (W * H * D)	9340*2600*1730mm
Weight of battery unit	26,400kg
Degree of protection	IP 54/Type 3R
Operating temperature range	-30 to 50 °C (> 45 °C derating)
Relative humidity	0 ~ 95 % (non-condensing)
Max. working altitude	3000m
Cooling concept of battery chamber	Liquid cooling
Fire safety	Fused sprinkler heads, NFPA 69 explosion prevention and ventilation IDLH gases
Communication interfaces	RS485, Ethernet
Communication protocols	Modbus RTU, Modbus TCP
Compliance	UL 9540, UL 9540A/NFPA 855
2 HOURS APPLICATION-ST2752UX*4-5000UD-MV-US	
BOL kWh(DC/AC LV Side)	11,008kWh DC/10,379kWh AC
ST2752UX Quantity	4
PCS Model	SC5000UD-MV-US
4 HOURS APPLICATION-ST2752UX*8-5000UD-MV-US	
BOL kWh(DC/AC LV Side)	22,016kWh/21,448kWh
ST2752UX Quantity	8
PCS Model	SC5000UD-MV-US
Grid Connection Data	
Max.THd of current	< 3 % (at nominal power)
DC component	< 0.5 % (at nominal power)
Power factor	> 0.99 (at nominal power)
Adjustable power factor	1.0 leading ~ 1.0 lagging
Nominal grid frequency	60 Hz
Grid frequency range	55 ~ 65 Hz
Transformer	
Transformer rated power	5,000 kVA
LV/MV voltage	0.9 kV / 34.5 kV
Transformer cooling type	ONAN (Oil Natural Air Natural)
Oil type	Mineral oil (PCB free) or degradable oil on request