

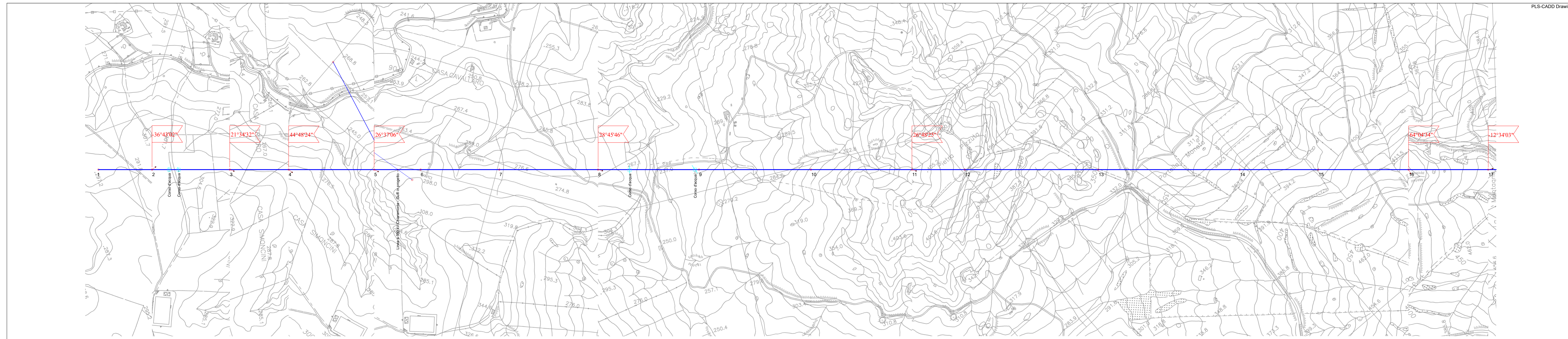
Legenda

Progetto - Nuovo elettrodotto a 150kV

15N Nuovi sostegni da realizzare

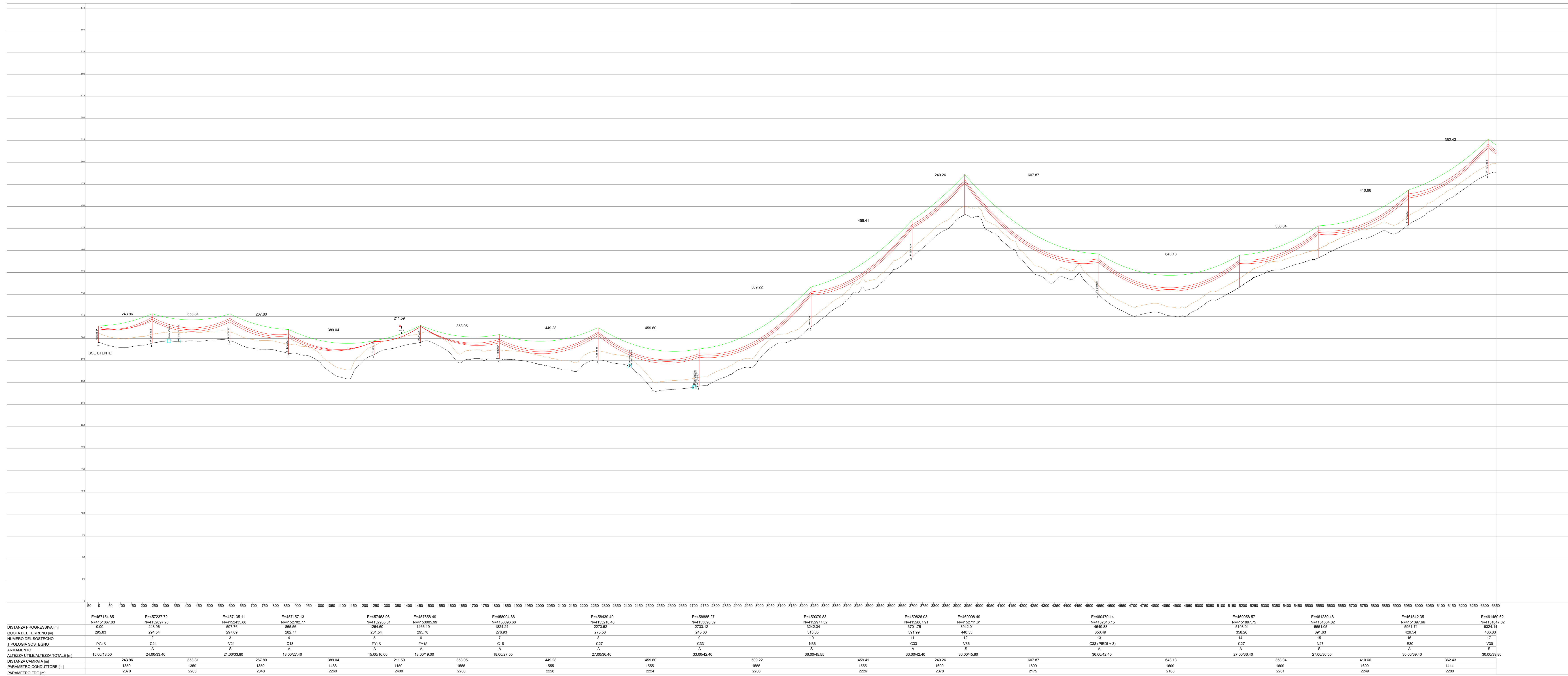
La catenaria del conduttore rappresentata è riferita ad una temperatura di esercizio pari a 75° in MFA (Massima Freccia Zona A)
 La catenaria della fune di guardia (fdg) rappresentata è riferita alla condizione MPA (Massimo Parametro Zona A)
 Franco Minimo da Terra: 10m
 Conduttore (Ø 31,5 all. acc.): Tesatura EDS 21%
 FdG (Ø 11,5 acc.+F.O.): Tesatura EDS 17,5% (parametro EDS₁₀₀=1,15*parametro EDS₂₀₀)

Dislivello elevazione linea
 FRANCO DA TERRA 10m
 TERRENO



60.0 m
 Horiz. Scale

15.0 m
 Vert. Scale



0	50	100	150	200	250	300	350	400	450	500	550	600	650	700	750	800	850	900	950	1000	1050	1100	1150	1200	1250	1300	1350	1400	1450	1500	1550	1600	1650	1700	1750	1800	1850	1900	1950	2000	2050	2100	2150	2200	2250	2300	2350	2400	2450	2500	2550	2600	2650	2700	2750	2800	2850	2900	2950	3000	3050	3100	3150	3200	3250	3300	3350	3400	3450	3500	3550	3600	3650	3700	3750	3800	3850	3900	3950	4000	4050	4100	4150	4200	4250	4300	4350	4400	4450	4500	4550	4600	4650	4700	4750	4800	4850	4900	4950	5000	5050	5100	5150	5200	5250	5300	5350	5400	5450	5500	5550	5600	5650	5700	5750	5800	5850	5900	5950	6000	6050	6100	6150	6200	6250	6300	6350																																																																																																																																																																																																																																																																																																																																																																																																																																																																																																																																																																																													
E=481154.85	E=481237.72	E=481315.11	E=481392.98	E=481470.77	E=481548.56	E=481626.35	E=481704.14	E=481781.93	E=481859.72	E=481937.51	E=482015.30	E=482093.09	E=482170.88	E=482248.67	E=482326.46	E=482404.25	E=482482.04	E=482559.83	E=482637.62	E=482715.41	E=482793.20	E=482870.99	E=482948.78	E=483026.57	E=483104.36	E=483182.15	E=483259.94	E=483337.73	E=483415.52	E=483493.31	E=483571.10	E=483648.89	E=483726.68	E=483804.47	E=483882.26	E=483960.05	E=484037.84	E=484115.63	E=484193.42	E=484271.21	E=484349.00	E=484426.79	E=484504.58	E=484582.37	E=484660.16	E=484737.95	E=484815.74	E=484893.53	E=484971.32	E=485049.11	E=485126.90	E=485204.69	E=485282.48	E=485360.27	E=485438.06	E=485515.85	E=485593.64	E=485671.43	E=485749.22	E=485827.01	E=485904.80	E=485982.59	E=486060.38	E=486138.17	E=486215.96	E=486293.75	E=486371.54	E=486449.33	E=486527.12	E=486604.91	E=486682.70	E=486760.49	E=486838.28	E=486916.07	E=486993.86	E=487071.65	E=487149.44	E=487227.23	E=487305.02	E=487382.81	E=487460.60	E=487538.39	E=487616.18	E=487693.97	E=487771.76	E=487849.55	E=487927.34	E=488005.13	E=488082.92	E=488160.71	E=488238.50	E=488316.29	E=488394.08	E=488471.87	E=488549.66	E=488627.45	E=488705.24	E=488783.03	E=488860.82	E=488938.61	E=489016.40	E=489094.19	E=489171.98	E=489249.77	E=489327.56	E=489405.35	E=489483.14	E=489560.93	E=489638.72	E=489716.51	E=489794.30	E=489872.09	E=489949.88	E=490027.67	E=490105.46	E=490183.25	E=490261.04	E=490338.83	E=490416.62	E=490494.41	E=490572.20	E=490649.99	E=490727.78	E=490805.57	E=490883.36	E=490961.15	E=491038.94	E=491116.73	E=491194.52	E=491272.31	E=491350.10	E=491427.89	E=491505.68	E=491583.47	E=491661.26	E=491739.05	E=491816.84	E=491894.63	E=491972.42	E=492050.21	E=492128.00	E=492205.79	E=492283.58	E=492361.37	E=492439.16	E=492516.95	E=492594.74	E=492672.53	E=492750.32	E=492828.11	E=492905.90	E=492983.69	E=493061.48	E=493139.27	E=493217.06	E=493294.85	E=493372.64	E=493450.43	E=493528.22	E=493606.01	E=493683.80	E=493761.59	E=493839.38	E=493917.17	E=493994.96	E=494072.75	E=494150.54	E=494228.33	E=494306.12	E=494383.91	E=494461.70	E=494539.49	E=494617.28	E=494695.07	E=494772.86	E=494850.65	E=494928.44	E=495006.23	E=495084.02	E=495161.81	E=495239.60	E=495317.39	E=495395.18	E=495472.97	E=495550.76	E=495628.55	E=495706.34	E=495784.13	E=495861.92	E=495939.71	E=496017.50	E=496095.29	E=496173.08	E=496250.87	E=496328.66	E=496406.45	E=496484.24	E=496562.03	E=496639.82	E=496717.61	E=496795.40	E=496873.19	E=496950.98	E=497028.77	E=497106.56	E=497184.35	E=497262.14	E=497339.93	E=497417.72	E=497495.51	E=497573.30	E=497651.09	E=497728.88	E=497806.67	E=497884.46	E=497962.25	E=498040.04	E=498117.83	E=498195.62	E=498273.41	E=498351.20	E=498428.99	E=498506.78	E=498584.57	E=498662.36	E=498740.15	E=498817.94	E=498895.73	E=498973.52	E=499051.31	E=499129.10	E=499206.89	E=499284.68	E=499362.47	E=499440.26	E=499518.05	E=499595.84	E=499673.63	E=499751.42	E=499829.21	E=499907.00	E=499984.79	E=500062.58	E=500140.37	E=500218.16	E=500295.95	E=500373.74	E=500451.53	E=500529.32	E=500607.11	E=500684.90	E=500762.69	E=500840.48	E=500918.27	E=500996.06	E=501073.85	E=501151.64	E=501229.43	E=501307.22	E=501385.01	E=501462.80	E=501540.59	E=501618.38	E=501696.17	E=501773.96	E=501851.75	E=501929.54	E=502007.33	E=502085.12	E=502162.91	E=502240.70	E=502318.49	E=502396.28	E=502474.07	E=502551.86	E=502629.65	E=502707.44	E=502785.23	E=502863.02	E=502940.81	E=503018.60	E=503096.39	E=503174.18	E=503251.97	E=503329.76	E=503407.55	E=503485.34	E=503563.13	E=503640.92	E=503718.71	E=503796.50	E=503874.29	E=503952.08	E=504029.87	E=504107.66	E=504185.45	E=504263.24	E=504341.03	E=504418.82	E=504496.61	E=504574.40	E=504652.19	E=504730.00	E=504807.81	E=504885.62	E=504963.43	E=505041.24	E=505119.05	E=505196.86	E=505274.67	E=505352.48	E=505430.29	E=505508.10	E=505585.91	E=505663.72	E=505741.53	E=505819.34	E=505897.15	E=505974.96	E=506052.77	E=506130.58	E=506208.39	E=506286.20	E=506364.01	E=506441.82	E=506519.63	E=506597.44	E=506675.25	E=506753.06	E=506830.87	E=506908.68	E=506986.49	E=507064.30	E=507142.11	E=507219.92	E=507297.73	E=507375.54	E=507453.35	E=507531.16	E=507608.97	E=507686.78	E=507764.59	E=507842.40	E=507920.21	E=507998.02	E=508075.83	E=508153.64	E=508231.45	E=508309.26	E=508387.07	E=508464.88	E=508542.69	E=508620.50	E=508698.31	E=508776.12	E=508853.93	E=508931.74	E=509009.55	E=509087.36	E=509165.17	E=509242.98	E=509320.79	E=509398.60	E=509476.41	E=509554.22	E=509632.03	E=509709.84	E=509787.65	E=509865.46	E=509943.27	E=510021.08	E=510098.89	E=510176.70	E=510254.51	E=510332.32	E=510410.13	E=510487.94	E=510565.75	E=510643.56	E=510721.37	E=510799.18	E=510876.99	E=510954.80	E=511032.61	E=511110.42	E=511188.23	E=511266.04	E=511343.85	E=511421.66	E=511499.47	E=511577.28	E=511655.09	E=511732.90	E=511810.71	E=511888.52	E=511966.33	E=512044.14	E=512121.95	E=512200.00	E=512278.05	E=512356.10	E=512434.15	E=512512.20	E=512590.25	E=512668.30	E=512746.35	E=512824.40	E=512902.45	E=512980.50	E=513058.55	E=513136.60	E=513214.65	E=513292.70	E=513370.75	E=513448.80	E=513526.85	E=513604.90	E=513682.95	E=513761.00	E=513839.05	E=513917.10	E=513995.15	E=514073.20	E=514151.25	E=514229.30	E=514307.35	E=514385.40	E=514463.45	E=514541.50	E=514619.55	E=514697.60	E=514775.65	E=514853.70	E=514931.75	E=515009.80	E=515087.85	E=515165.90	E=515243.95	E=515322.00	E=515400.05	E=515478.10	E=515556.15	E=515634.20	E=515712.25	E=515790.30	E=515868.35	E=515946.40	E=516024.45	E=516102.50	E=516180.55	E=516258.60	E=516336.65	E=516414.70	E=516492.75	E=516570.80	E=516648.85	E=516726.90	E=516804.95	E=516883.00	E=516961.05	E=517039.10	E=517117.15	E=517195.20	E=517273.25	E=517351.30	E=517429.35	E=517507.40	E=517585.45	E=517663.50	E=517741.55	E=517819.60	E=517897.65	E=517975.70	E=518053.75	E=518131.80	E=518209.85	E=518287.90	E=518365.95	E=518444.00	E=518522.05	E=518600.10	E=518678.15	E=518756.20	E=518834.25	E=518912.30	E=518990.35	E=519068.40	E=519146.45	E=519224.50	E=519302.55	E=519380.60	E=519458.65	E=519536.70	E=519614.75	E=519692.80	E=519770.85	E=519848.90	E=519926.95	E=520005.00	E=520083.05	E=520161.10	E=520239.15	E=520317.20	E=520395.25	E=520473.30	E=520551.35	E=520629.40	E=520707.45	E=520785.50	E=520863.55	E=520941.60	E=521019.65	E=521097.70	E=521175.75	E=521253.80	E=521331.85	E=521409.90	E=521487.95	E=521566.00	E=521644.05	E=521722.10	E=521800.15	E=521878.20	E=521956.25	E=522034.30	E=522112.35	E=522190.40	E=522268.45	E=522346.50	E=522424.55	E=522502.60	E=522580.65	E=522658.70	E=522736.75	E=522814.80	E=522892.85	E=522970.90	E=523048.95	E=523127.00	E=523205.05	E=523283.10	E=523361.15	E=523439.20	E=523517.25	E=523595.30	E=523673.35	E=523751.40	E=523829.45	E=523907.50	E=523985.55	E=524063.60	E=524141.65	E=524219.70	E=524297.75	E=524375.80	E=524453.85	E=524531.90	E=524609.95	E=524688.00	E=524766.05	E=524844.10	E=524922.15	E=525000.20	E=525078.25	E=525156.30	E=525234.35	E=525312.40	E=525390.45	E=525468.50	E=525546.55	E=525624.60	E=525702.65	E=525780.70	E=525858.75	E=525936.80	E=526014.85	E=526092.90	E=526170.95	E=526249.00	E=526327.05	E=526405.10	E=526483.15	E=526561.20	E=526639.25	E=526717.30	E=526795.35	E=526873.40	E=526951.45	E=527029.50	E=527107.55	E=527185.60	E=527263.65	E=527341.70	E=527419.75	E=527497.80	E=527575.85	E=527653.90	E=527731.95	E=527810.00	E=527888.05	E=527966.10	E=528044.15	E=528122.20	E=528200.25	E=528278.30	E=528356.35	E=528434.40	E=528512.45	E=528590.50	E=528668.55	E=528746.60	E=528824.65	E=528902.70	E=528980.75	E=529058.80	E=529136.85	E=529214.90	E=529292.95	E=529371.00	E=529449.05	E=529527.10	E=529605.15	E=529683.20	E=529761.25	E=529839.30	E=529917.35	E=529995.40	E=530073.45	E=530151.50	E=530229.55	E=530307.60	E=530385.65	E=530463.70	E=530541.75	E=530619.80	E=530697.85	E=530775.90	E=530853.95	E=530932.00	E=531010.05	E=531088.10	E=531166.15	E=531244.20	E=531322.25	E=531400.30	E=531478.35	E=531556.40	E=531634.45	E=531712.50	E=531790.55	E=531868.60	E=531946.65	E=532024.70	E=532102.75	E=532180.80	E=532258.85	E=532336.90	E=532414.95	E=532493.00	E=532571.05	E=532649.10	E=532727.15	E=532805.20	E=532883.25	E=532961.30	E=533039.35	E=533117.40	E=533195.45	E=533273.50	E=533351.55	E=533429.60	E=533507.65	E=533585.70	E=533663.75	E=533741.80	E=533819.85	E=533897.90	E=533975.95	E=534054.00	E=534132.05	E=534210.10	E=534288.15	E=534366.20	E=534444.25	E=534522.30	E=534600.35	E=534678.40	E=534756.45	E=534834.50	E=534912.55	E=534990.60	E=535068.65	E=535146.70	E=535224.75	E=535302.80	E=535380.85	E=535458.90	E=535536.95	E=535615.00	E=

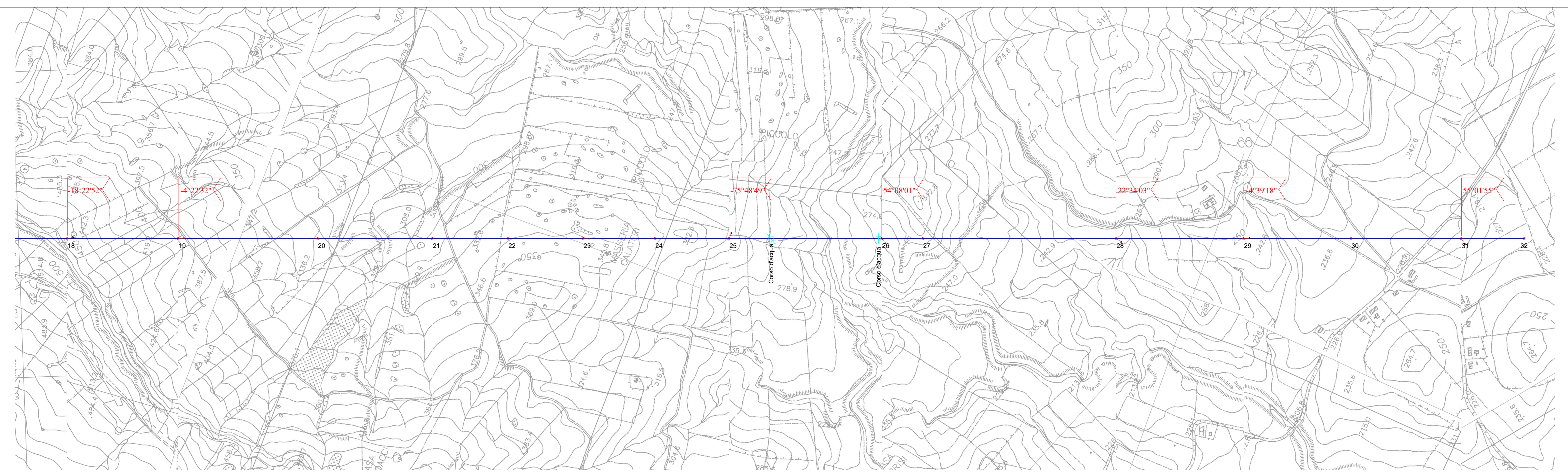
Legenda

Progetto - Nuovo elettrodotto a 150kV

15N Nuovi sostegni da realizzare

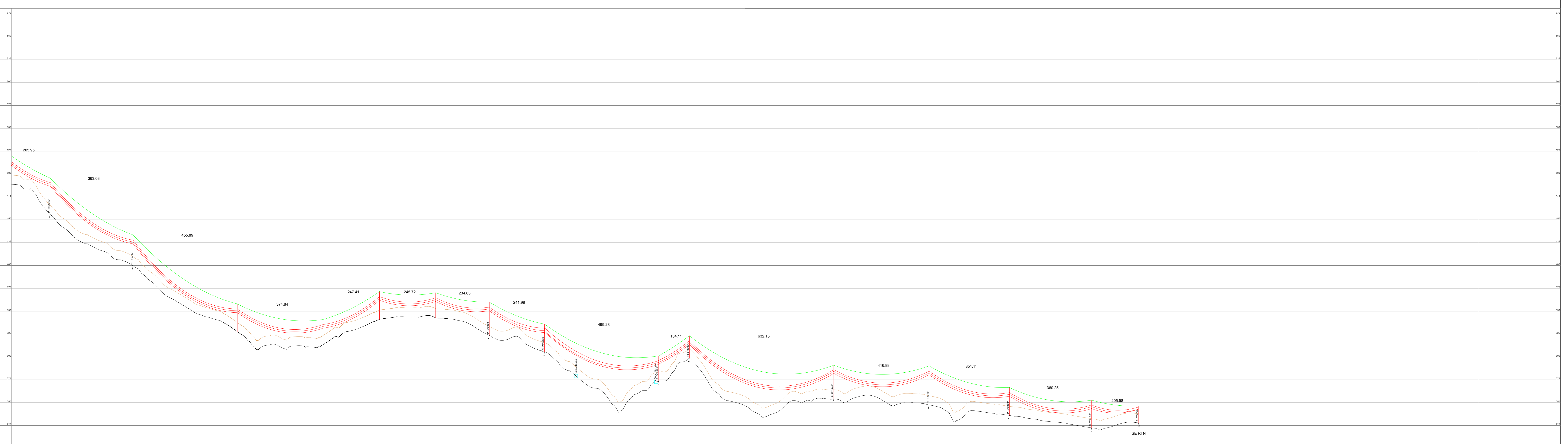
La catenaria del conduttore rappresentata è riferita ad una temperatura di esercizio pari a 75° in MFA (Massima Freccia Zona A)
 La catenaria della fune di guardia (fg) rappresentata è riferita alla condizione MPA (Massimo Parametro Zona A)
 Franco Minimo da Terra: 10m
 Conduttore (Ø 31,5 all. acc.): Tesatura EDS 21%
 FG (Ø 11,5 acc.+F.O.): Tesatura EDS 17,5% (parametro $EDS_{10g} = 1,15 \cdot \text{parametro } EDS_{cond}$)

Dirazione direzione linea
 FRANCO DA TERRA 10m
 TERRENO



0,0 m
 Horiz. Scale

150 m
 Vert. Scale



Stazione	18	19	20	21	22	23	24	25	26	27	28	29	30	31	32
COORDINATA X (m)	6400	6500	6600	6700	6800	6900	7000	7100	7200	7300	7400	7500	7600	7700	7800
COORDINATA Y (m)	356,95	353,00	405,89	374,84	247,41	245,72	234,63	241,96	499,26	124,11	632,15	416,88	281,11	360,25	200,58
ALTEZZA FUNE DI GUARDIA (m)	356,95	353,00	405,89	374,84	247,41	245,72	234,63	241,96	499,26	124,11	632,15	416,88	281,11	360,25	200,58
ALTEZZA CONDUTTORE (m)	356,95	353,00	405,89	374,84	247,41	245,72	234,63	241,96	499,26	124,11	632,15	416,88	281,11	360,25	200,58
ALTEZZA UTILE (m)	1414	1414	1414	1414	1414	1414	1414	1414	1414	1414	1414	1414	1414	1414	1414
PARAMETRO FDS (m)	2400	2200	2200	2200	2200	2200	2200	2200	2200	2200	2200	2200	2200	2200	2200

Regione: SICILIA
 Province: CATANIA, ENNA
 Comuni: ASSORO, RAMACCA, RADDUSA

Impianto fotovoltaico "Assoro 2"
 Connessione alla RTN

TITOLO: Elettrodotto AT di collegamento alla RTN
 Profilo longitudinale - Scala 1:1000

Tavola: 150.21.01.W05
 2 di 2

Progettazione

3E Ingegneria S.r.l.
 Via G. Volpe n.92
 56121 PISA
 3e@ingegneria.it
 www.3eingegneria.it
 info@3eingegneria.it

REVISIONI

PROPRONTE: **IBVI 24 s.r.l.**
 IBVI 24 srl
 Viale Amedeo Duca D'Aosta, 76
 39100 Bolzano (BZ)
 IBVI@24.it