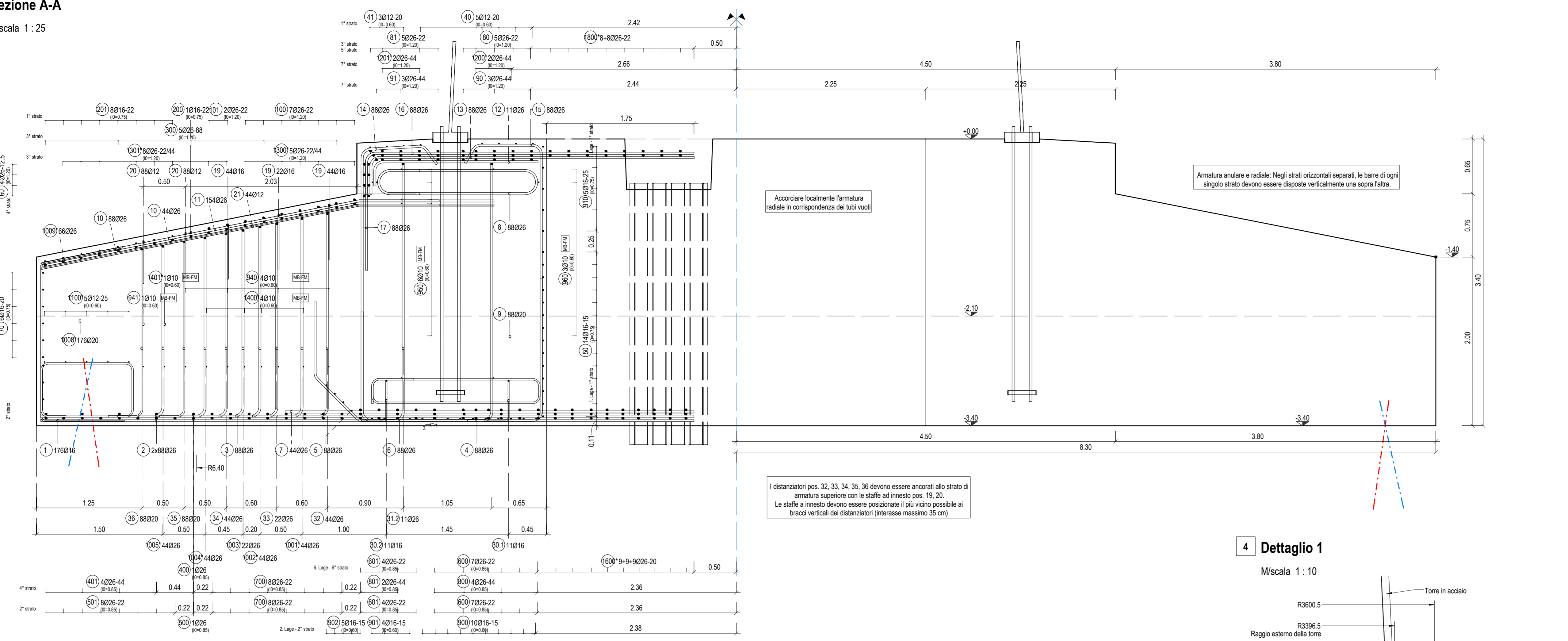


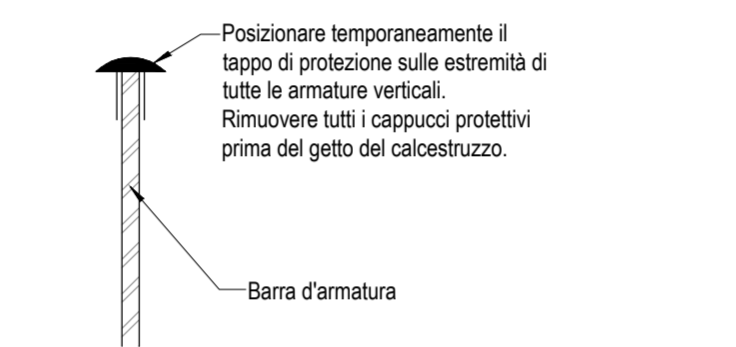
1 Sezione A-A

Mscala 1:25



Giunto di costruzione... Riferimento computato... ATTEZIONE...

Dettaglio cappuccio di protezione



4 Dettaglio 1

Mscala 1:10

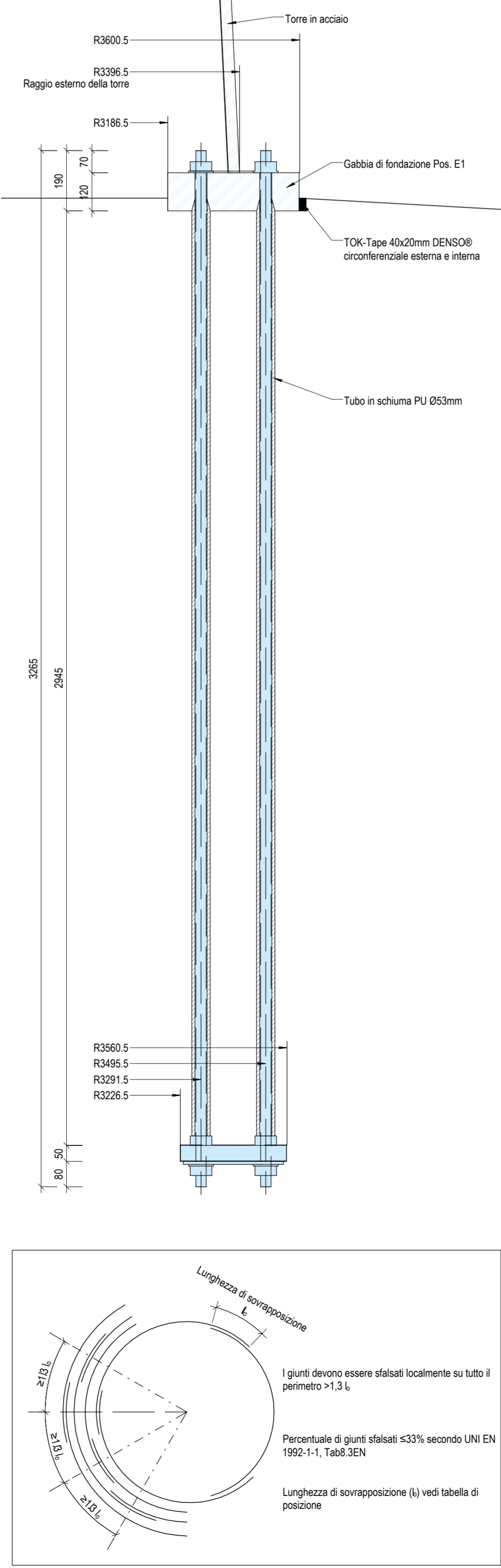


Table with diameters and reinforcement specifications: Diametri di piegatura, dbr, ds=20mm, ds=25mm, Per barre.

Table titled 'Quantità materiali' showing material quantities for concrete and steel reinforcement.

Table titled 'Elenco delle armature' listing reinforcement bars with their positions, quantities, and lengths.

Table titled 'Quantità di armatura' showing the total quantities of reinforcement materials.

Table titled 'Elenco delle armature' listing reinforcement bars for the construction joint.

Table titled 'Quantità di armatura' showing the total quantities of reinforcement materials for the construction joint.

Table titled 'Quantità di armatura' showing the total quantities of reinforcement materials for the construction joint.

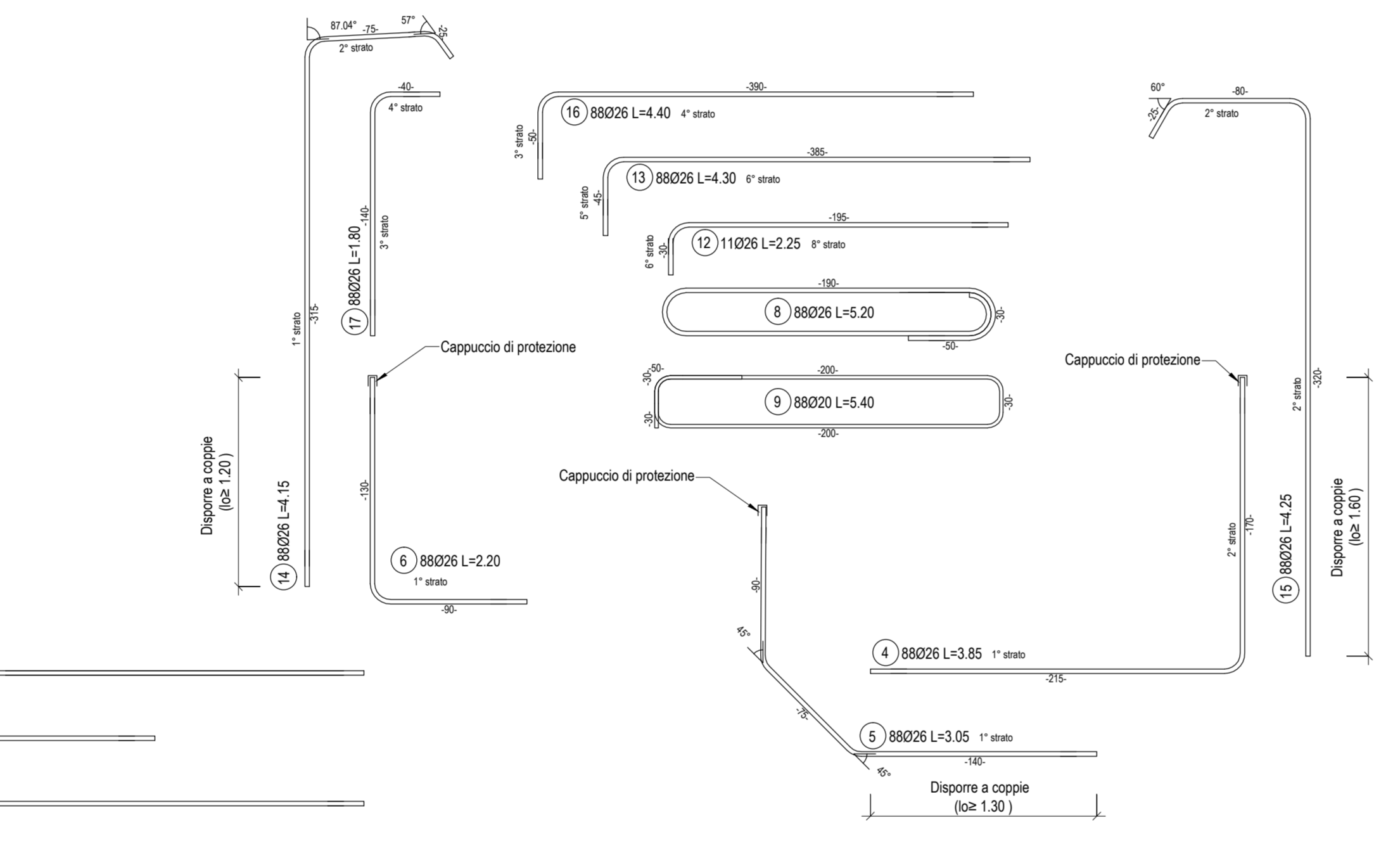
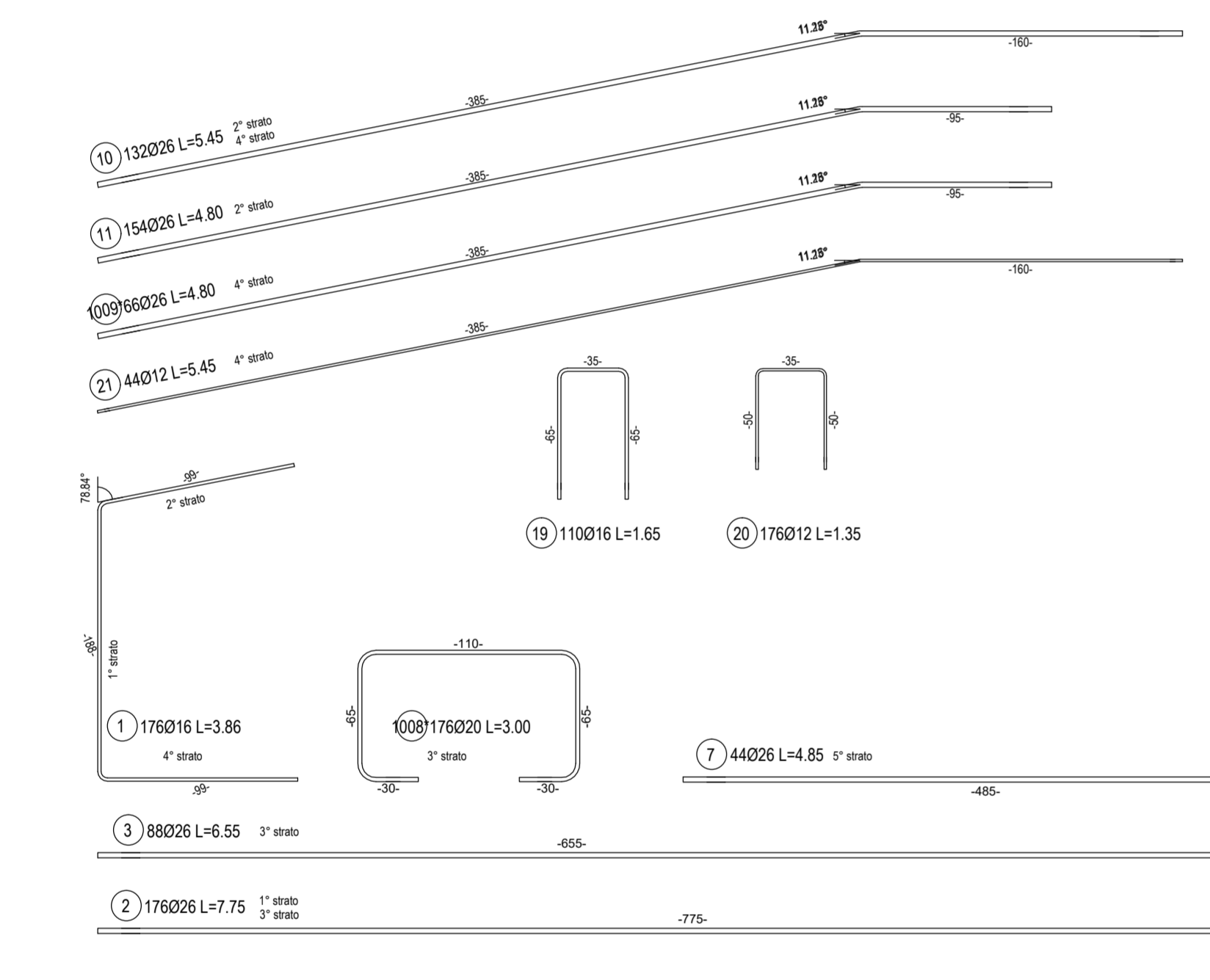


Table titled 'Distanziatori' showing dimensions and quantities for various types of spacers.

Table titled 'Distanziatori (necessari solo in caso di esecuzione del giunto di lavoro)' showing dimensions and quantities for spacers at construction joints.

Table titled 'MB-FM Ferri di montaggio' showing dimensions and quantities for mounting bars.

Generale: Specifiche di progettazione ENERCON... Base di progettazione UNI EN 1992-1-1... Per il sottotubo in calcestruzzo (magrone)...

Table titled 'Requisiti materiali' listing material requirements for concrete, steel, and reinforcement.

Table titled 'Requisiti speciali' listing special requirements for concrete and reinforcement.

Table titled 'Coproferro' listing cover requirements for internal, external, and lateral surfaces.

Table titled 'Requisiti speciali' listing special requirements for concrete and reinforcement.

Project information including logos of the municipalities, project title 'PROGETTO PER LA REALIZZAZIONE E L'ESERCIZIO DI UN IMPIANTO DI PRODUZIONE DI ENERGIA ELETTRICA...', and contact details for the proposer and designers.

Sezione Fondazione WTC - Carpenterie, armature e dettagli costruttivi