



PROGETTO PER LA REALIZZAZIONE DI UN IMPIANTO PER LA PRODUZIONE DI ENERGIA MEDIANTE LO SFRUTTAMENTO DEL VENTO NEL TERRITORIO COMUNALE DI SAN GIULIANO DI PUGLIA (CB) E SANTA CROCE DI MAGLIANO (CB)

PROGETTO DEFINITIVO

prima emissione: luglio 2021

REV.	DATA	DESCRIZIONE:

PROGETTAZIONE



via Volga c/o Fiera del Levante Pad.129 - BARI (BA)
ing. Sebanino GIOTTA - ing. Fabio PACCAPELO
ing. Francesca SACCAROLA - geom. Raffaella TISTI



ARCHITETTURA E PAESAGGIO

VIRUSDESIGN®
arch. Vincenzo RUSSO
via Puglie n.8 - Cerignola (FG)



IMPIANTI ELETTRICI

ing. Roberto DI MONTE



GEOLOGIA

geol. Pietro PEPE

ACUSTICA

ing. Francesco PAPEO

ARCHEOLOGIA

dr.ssa archeol. Domenica CARRASSO

DOMENICA CARRASSO

Via G. Marconi, 19
70017 PUTIGNANO (BA)
C. F. CRR DNC 89144 A748J
P. IVA 08143810704

STUDIO PEDO-AGRONOMICO

dr.ssa Lucia PESOLA - dr. Rocco LABADESSA



ASPETTI FAUNISTICI

dott. nat. Fabio MASTROPASQUA



PD.R. ELABORATI DESCRITTIVI

R.3 PIANO DEI TRASPORTI





SEDE OPERATIVA - C.da Rio Lecine, 30
I-86014 Guardiaregia (CB)
tel. +39 (0)874.785033-4 fax: +39 (0)874.785022



www.molisnatrasporti.com
info@molisanatrasporti.it

Road Survey

San Giuliano di Puglia (CB)

MO 148/21 rev0

Index

1 Specs description	1
2 Preamble	1
3 External route	2
4 Observations and required road adjustments	4

1) Specs description

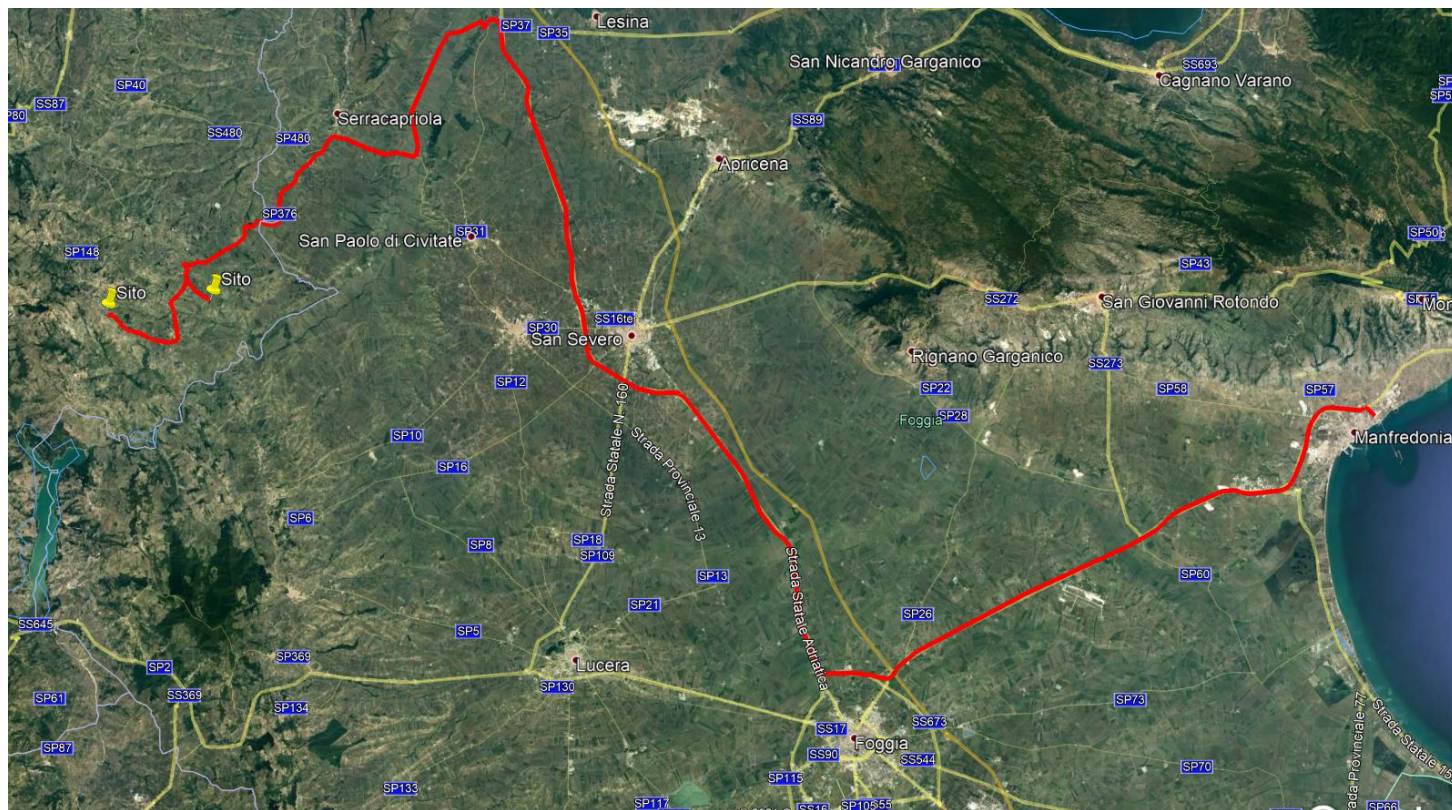
Project:	Wind farm San Giuliano di Puglia (CB)
State:	Italy
Location:	San Giuliano di Puglia (CB)
Loading place:	Manfredonia Port (FG)
Transshipment area:	41°51'38.32"N - 15°16'48.15"E - Lesina (FG)
Transshipped components:	Tower sections, blades, nacelles
Site access 1:	41°42'16.45"N - 15° 3'57.06"E - (OB.28)
Site access 2:	41°40'55.14"N - 15° 1'29.10"E - (OB.37)
Site access 3:	41°41'22.13"N - 15° 0'5.30"E - (OB.40)
Site access 4:	41°41'47.40"N - 14°59'21.49"E - (OB.41)
Scope:	Transport wind components
Type of wind turbine:	Vestas V162

2) Preamble

The project of this transport feasibility draft, is the establishment of a wind power plant in the territory of San Giuliano di Puglia (CB). The road survey was conducted on 29 th June 2021 by Mr. Riccardo DI PALMA (La Molisana Trasporti), in order to verify the transport possibilities of WTG Vestas V162.

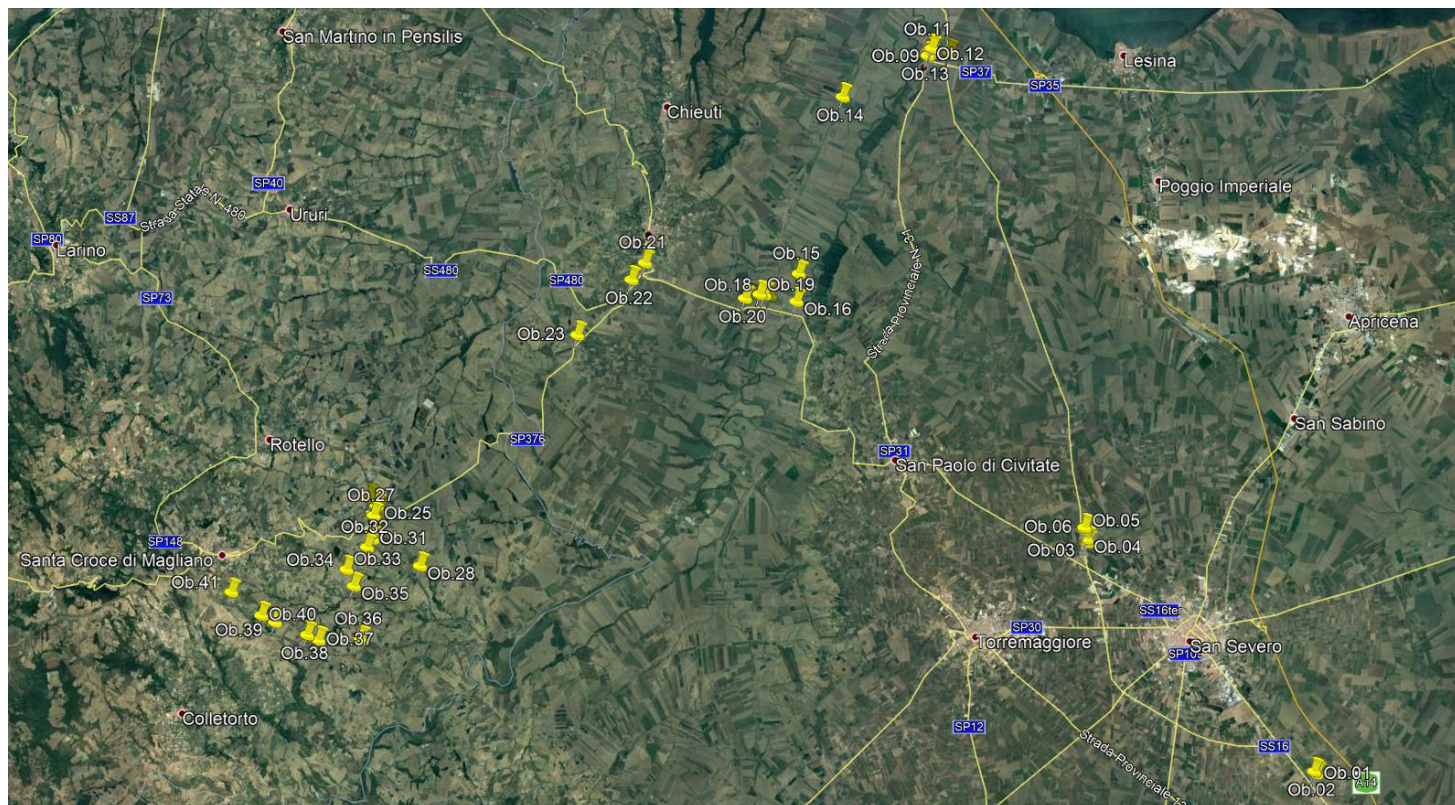
3) External route

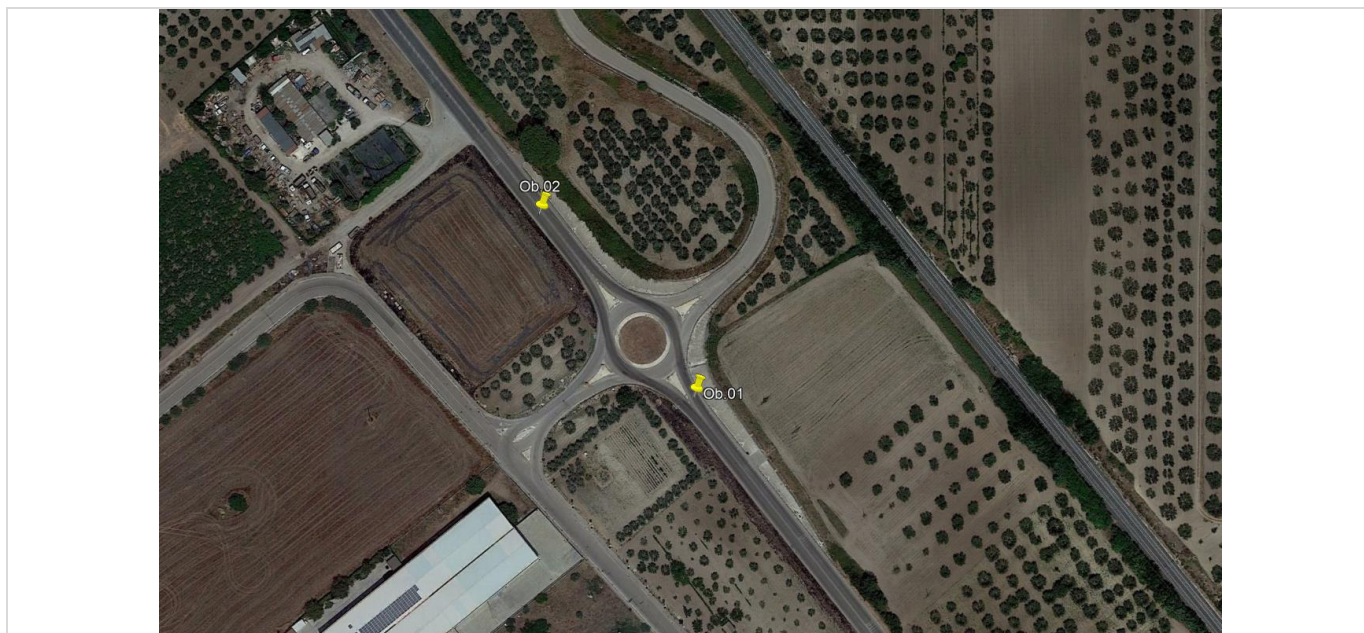
For the transport of the Wind Turbine, Manfredonia Port has been considered as pick-up location.



- ▶ Manfredonia Port ▶ S.S. 89 ▶ S.S. 673
- ▶ S.S. 16 ▶ S.P. 31 Strada Provinciale San Paolo di Civitate - Ripalta
- ▶ S.P. 41 ▶ S.P. 42 Strada Comunale Rapullo
- ▶ S.S. 16 TER ▶ S.S. 376 Strada Statale Maglianica
- ▶ Via Delle Croci ▶ S.P. 118
- ▶ Unnamed Road ▶ Strada Comunale Colle Ritiro Belvone ▶ S.P. 116
- ▶ Site access (OB.28 - OB.37 - OB.40 - OB.41)

4) Observations and required road adjustment

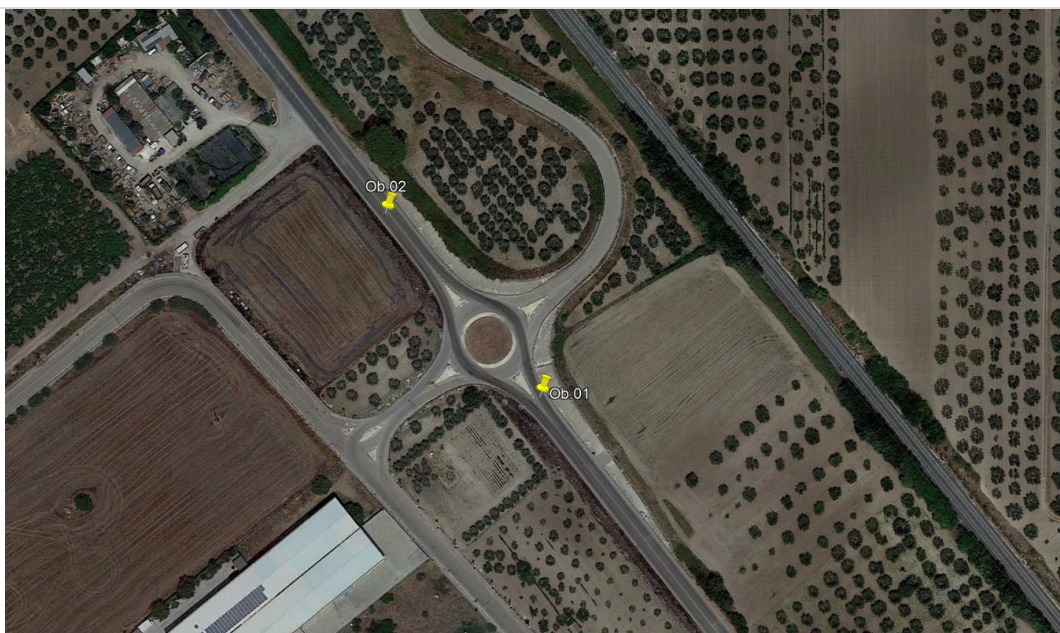




OB.01

Coord. 41°38'28.99"N - 15°25'45.40"E

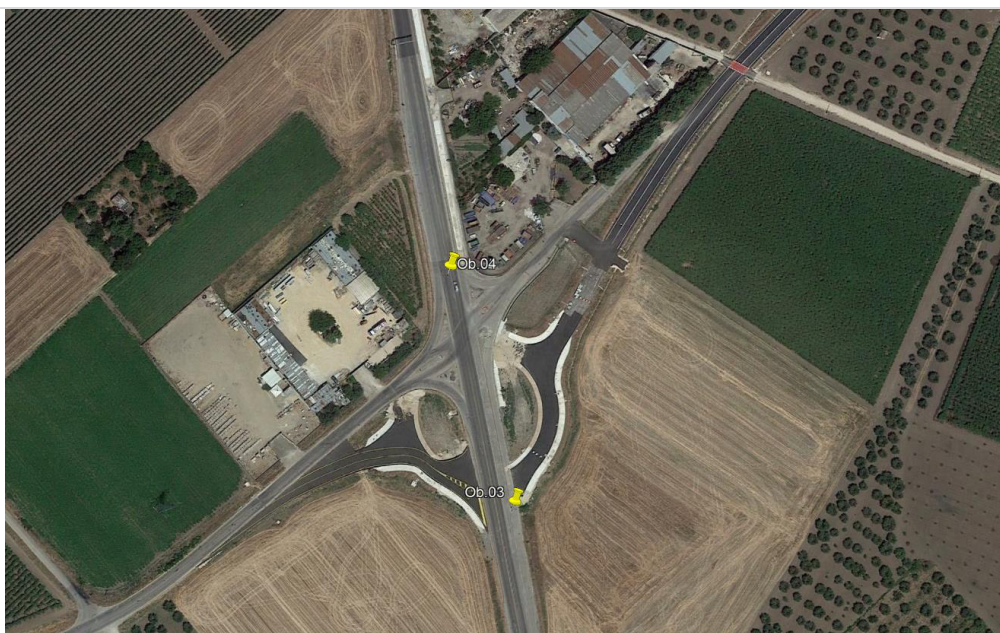
Start of by-pass n° 1
Make by-pass in the roundabout on S.S. 16, well compacted and leveled.
By-pass to be built as per specifications.



OB.02

Coord. 41°38'31.70"N - 15°25'42.33"E

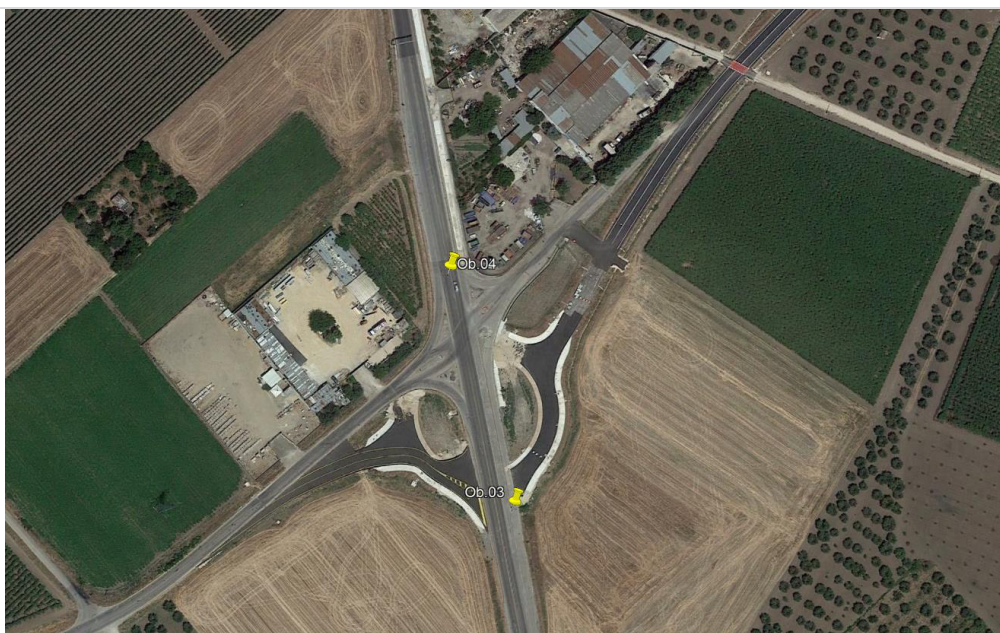
End of by-pass n° 1
Make by-pass in the roundabout on S.S. 16, well compacted and leveled.
By-pass to be built as per specifications.



OB.03

Coord. 41°42'41.86"N - 15°20'11.77"E

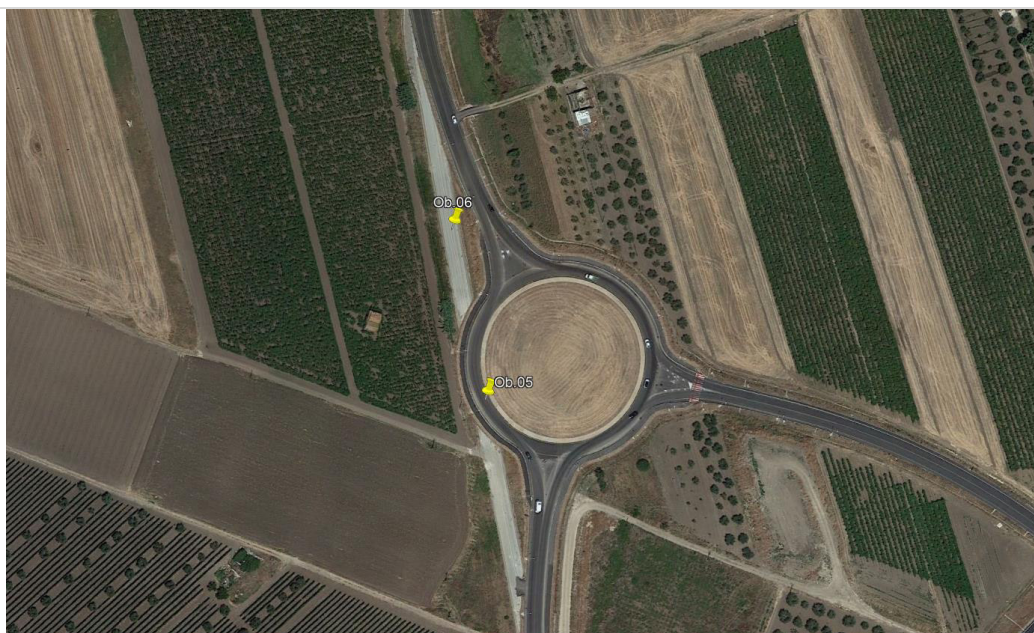
Start of by-pass n° 2
Make by-pass in the roundabout on S.S. 16, well compacted and leveled.
By-pass to be built as per specifications.



OB.04

Coord. 41°42'45.63"N - 15°20'10.39"E

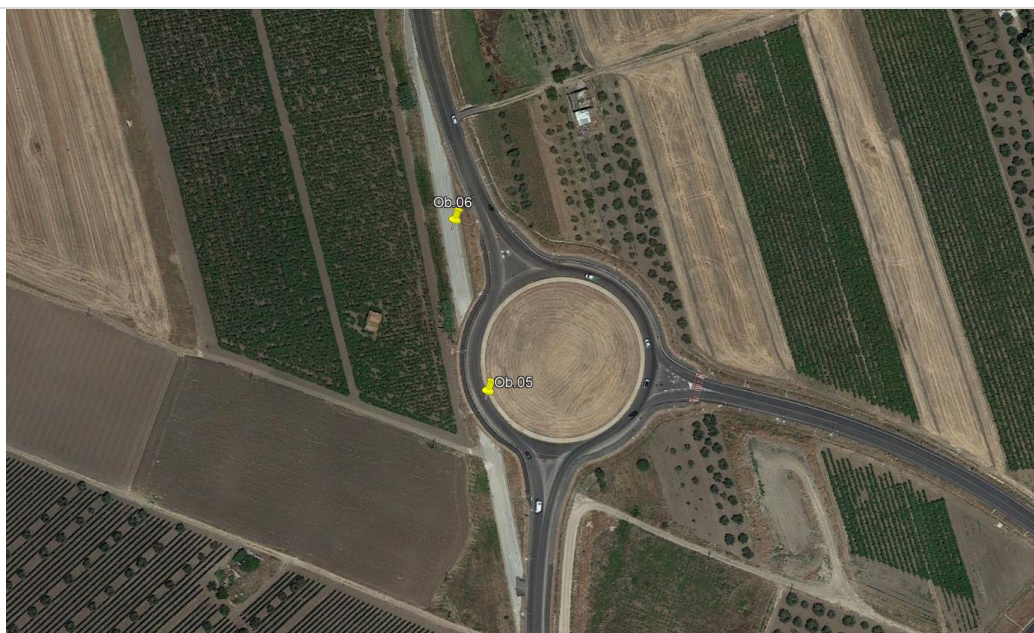
End of by-pass n° 2
Make by-pass in the roundabout on S.S. 16, well compacted and leveled.
By-pass to be built as per specifications.



OB.05

Coord. 41°42'55.40"N - 15°20'8.06"E

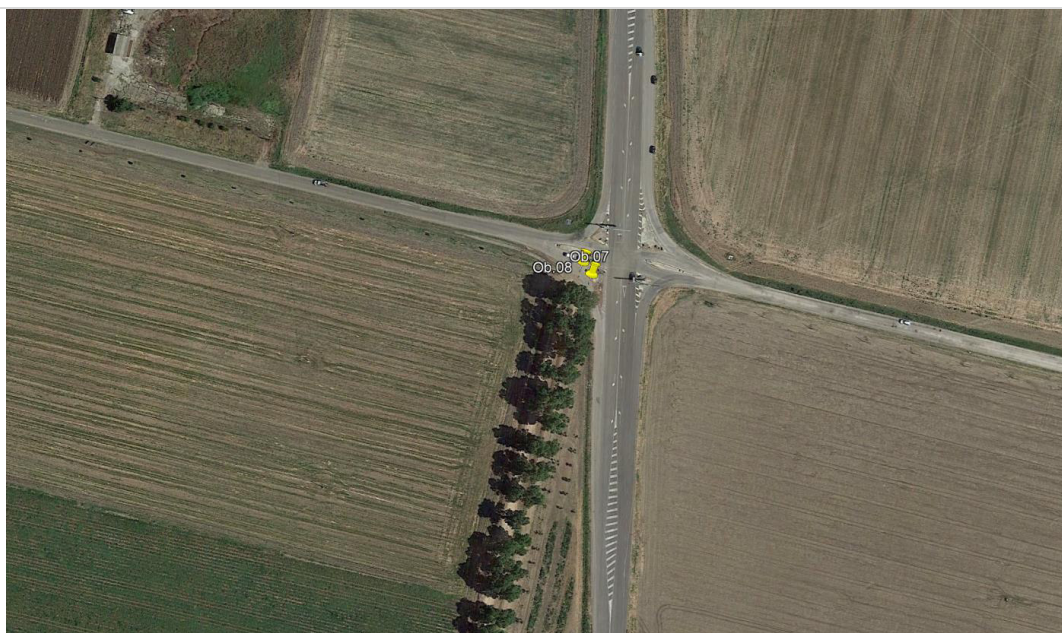
Start of by-pass n° 3
Make by-pass in the roundabout on S.S. 16, well compacted and leveled.
By-pass to be built as per specifications.



OB.06

Coord. 41°42'58.21"N - 15°20'7.32"E

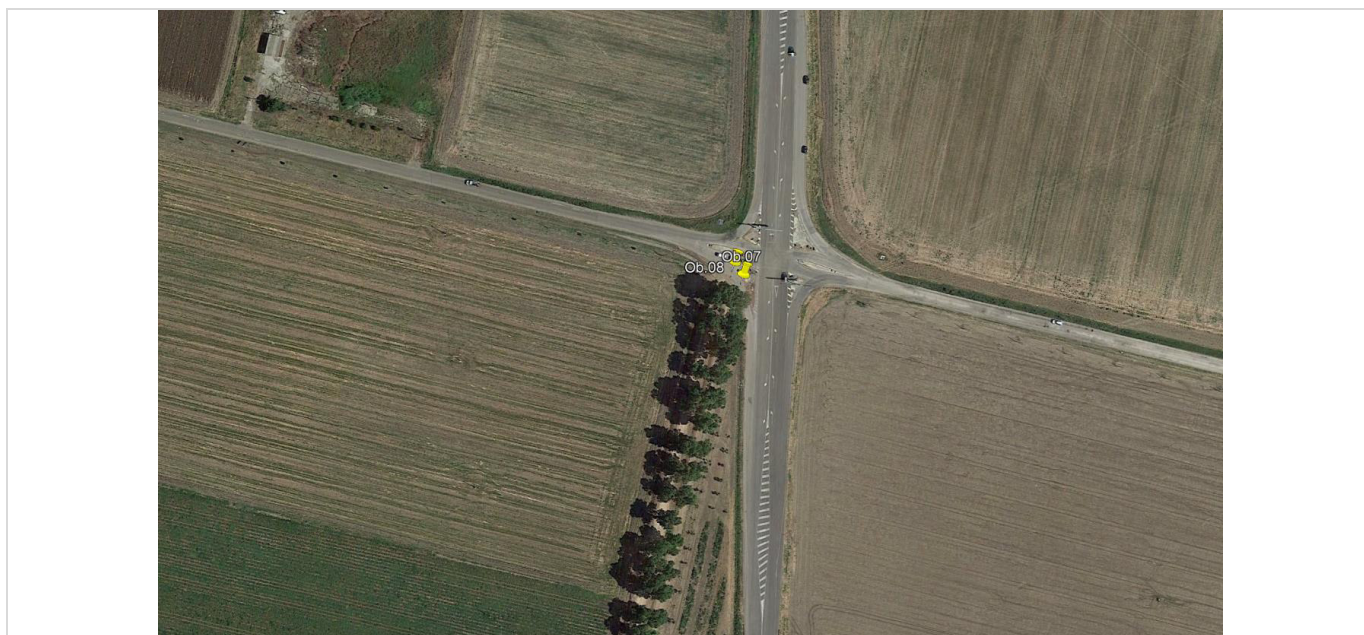
End of by-pass n° 3
Make by-pass in the roundabout on S.S. 16, well compacted and leveled.
By-pass to be built as per specifications.



OB.07

Coord. 41°51'35.88"N - 15°16'51.03"E

Make the maneuver in the opposite direction.



OB.08

Coord. 41°51'36.07"N - 15°16'50.84"E

Remove road signage as per picture. **Create transshipment area to reload blades, tower sections and nacelles.** From this point it is necessary to use the blade lifter device and special semi-trailers. You need a carriageway with a width of 5.0 meters in the straight part of the road and 5,5 meters in the curves. All NOT INDICATED cables must be over 6,0 mt in height. In addition, close to the bends, before 100 meters and after 100 meters, in the middle of the carriageway, it will be necessary to leave an aerial clearance without lany obstacles (limbs and cables) to allow the lifting of the blade.

The dimension of transshipment area must be 150 meters x 150 meters.



OB.09

Coord. 41°51'41.02"N - 15°16'24.98"E

Remove the cable as shown in the photo.



OB.10

Coord. 41°51'40.77"N - 15°16'23.46"E

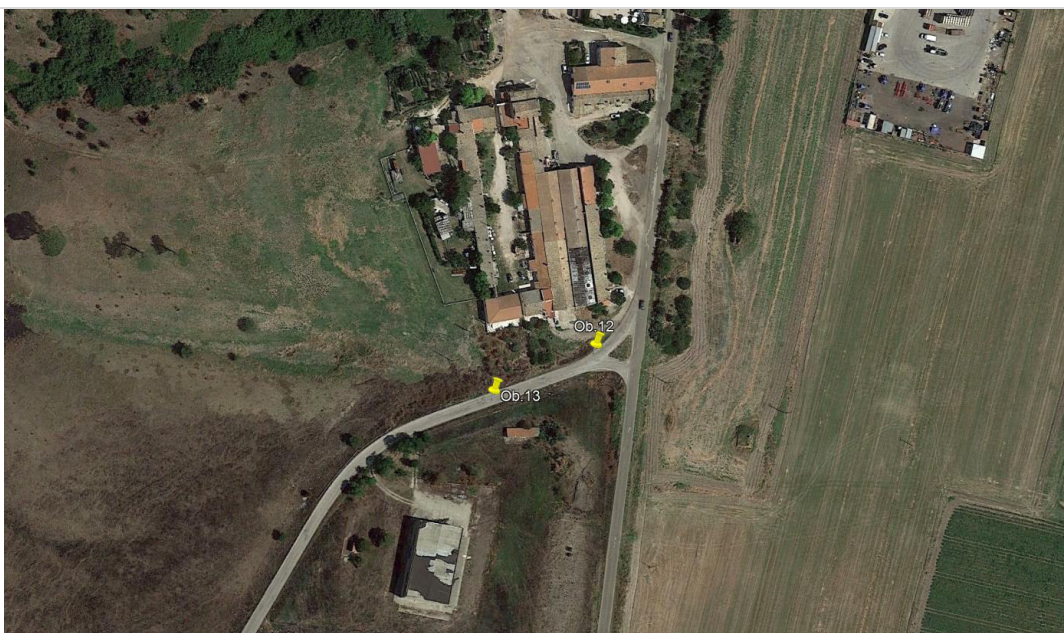
Remove the cable as shown in the photo.
Cut the protruding vegetation on the roadway, as shown in the photo.



OB.11

Coord. 41°51'39.48"N - 15°16'22.64"E

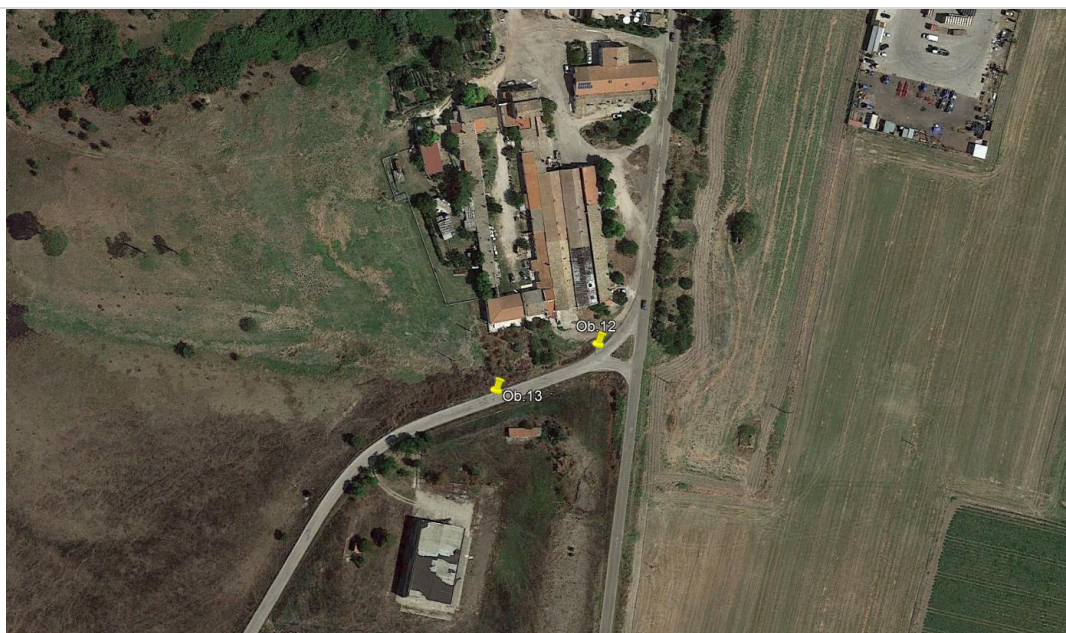
Remove the cables as shown in the photo.



OB.12

Coord. 41°51'33.63"N - 15°16'20.89"E

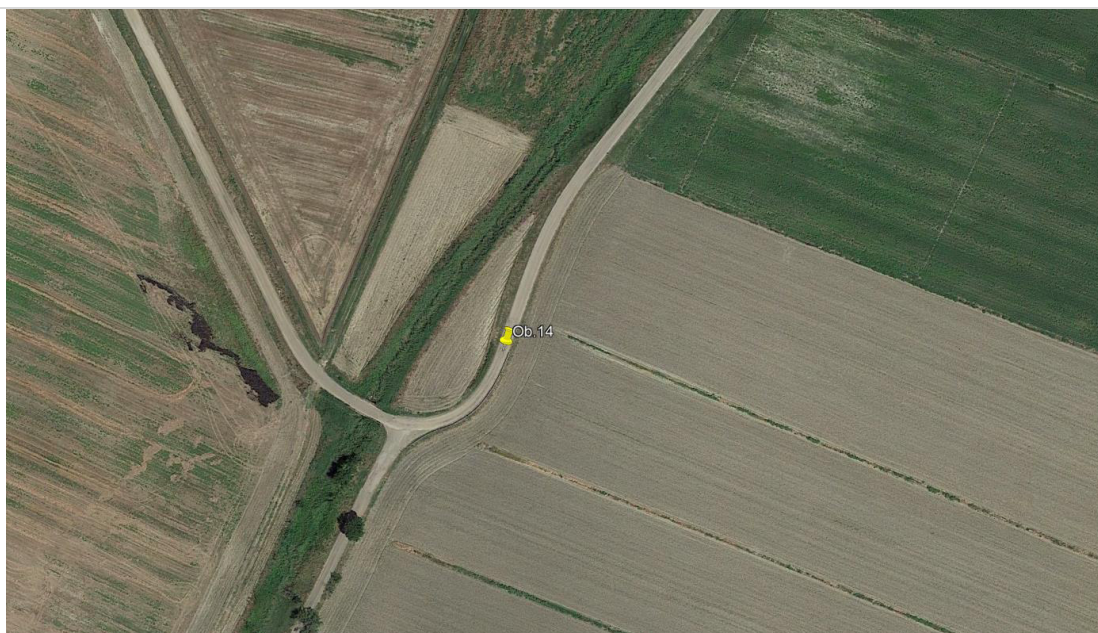
Remove the cable as shown in the photo.



OB.13

Coord. 41°51'32.93"N - 15°16'18.80"E

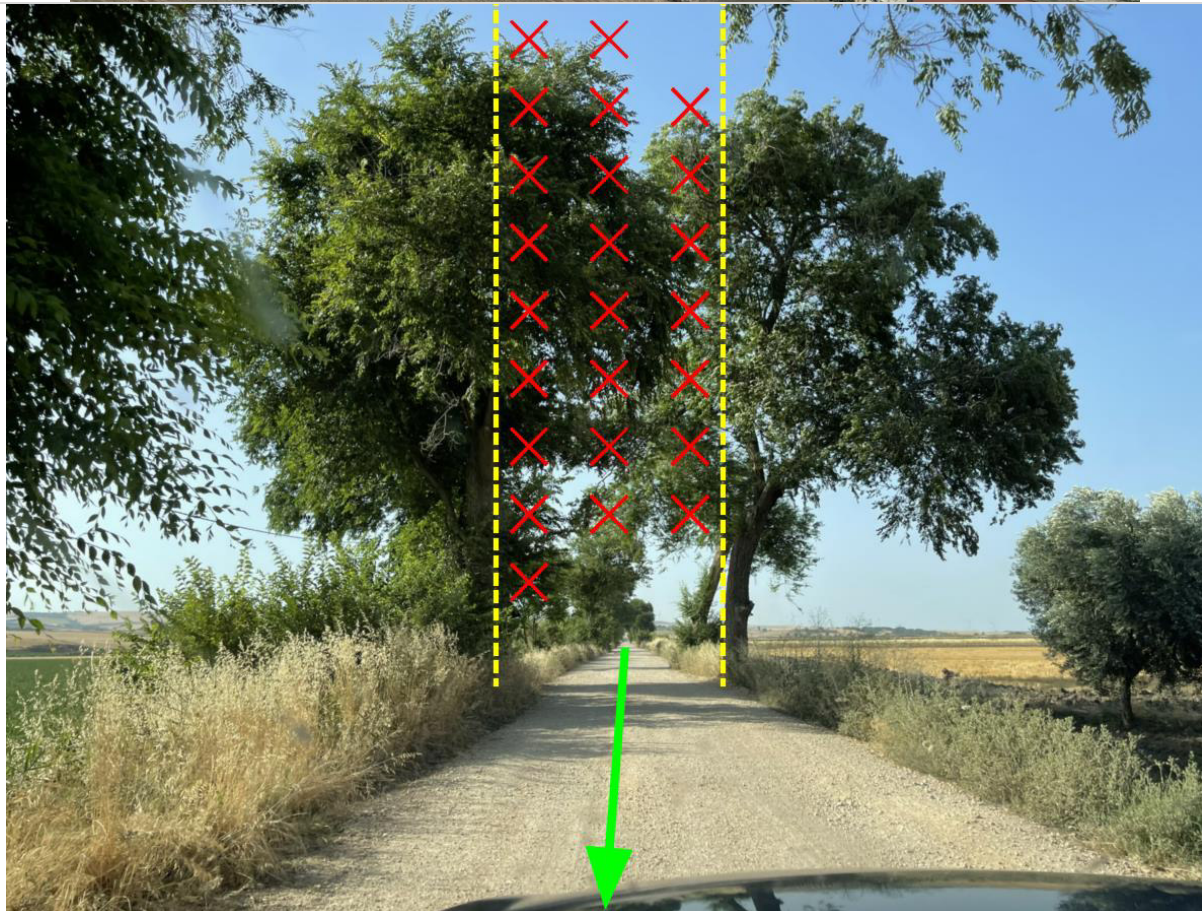
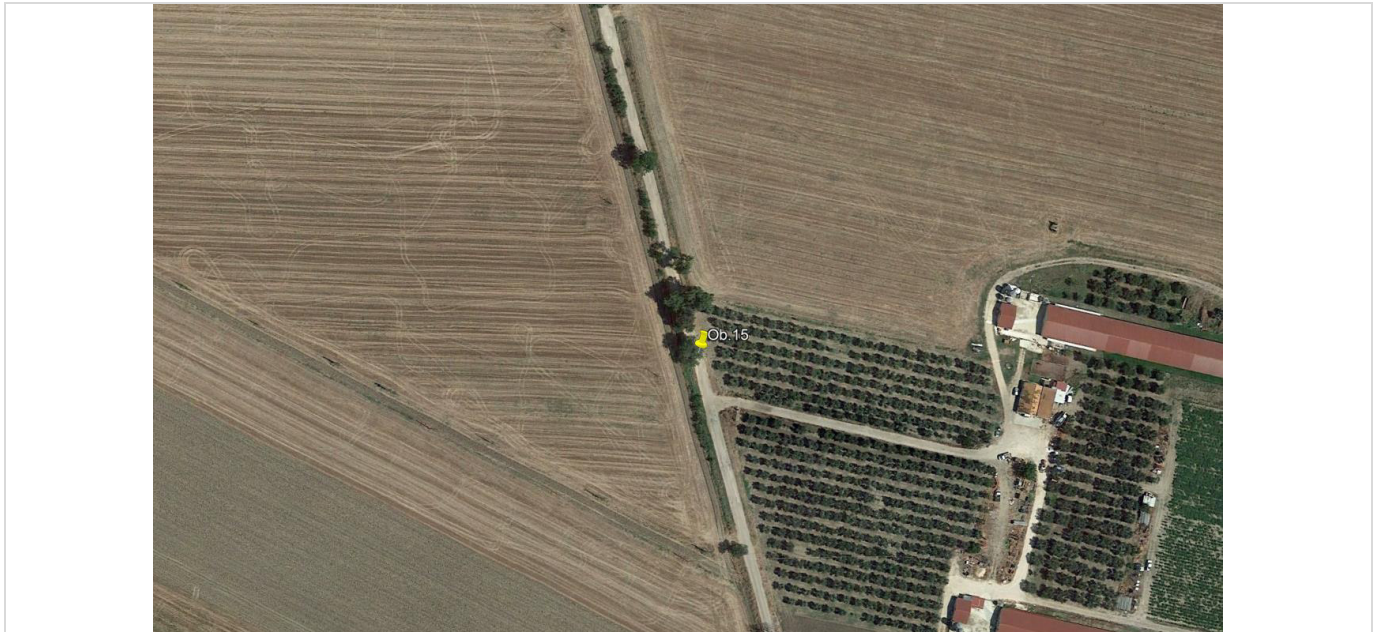
Remove the cables as shown in the photo.



OB.14

Coord. 41°50'48.03"N - 15°14'14.49"E

Make a driveway enlargement, well compacted and leveled, of 3,00 meters on the left side, as shown in the photo.

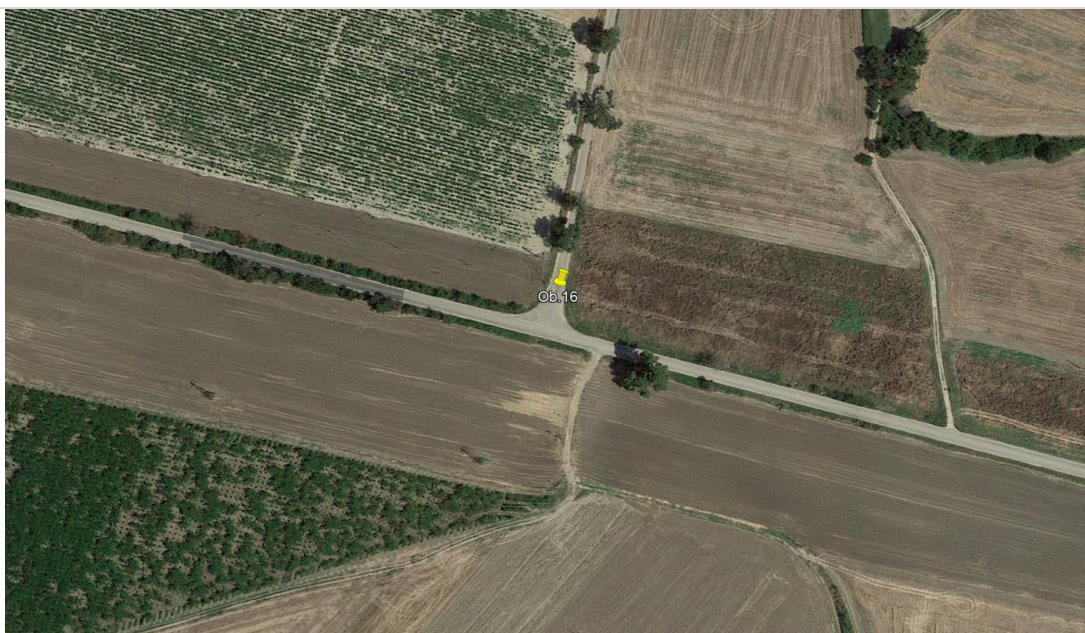


OB.15

Coord. 41°47'35.13"N - 15°13'10.26"E

Cut the protruding vegetation on the roadway, as shown in the photo.
Along all the road, close to the bends, 100 meters before and 100 meters after, in the middle of the carriageway, it will be necessary to leave an aerial clearance without any obstacles (limbs and cables) to allow the lifting of the blade with blade lifter.

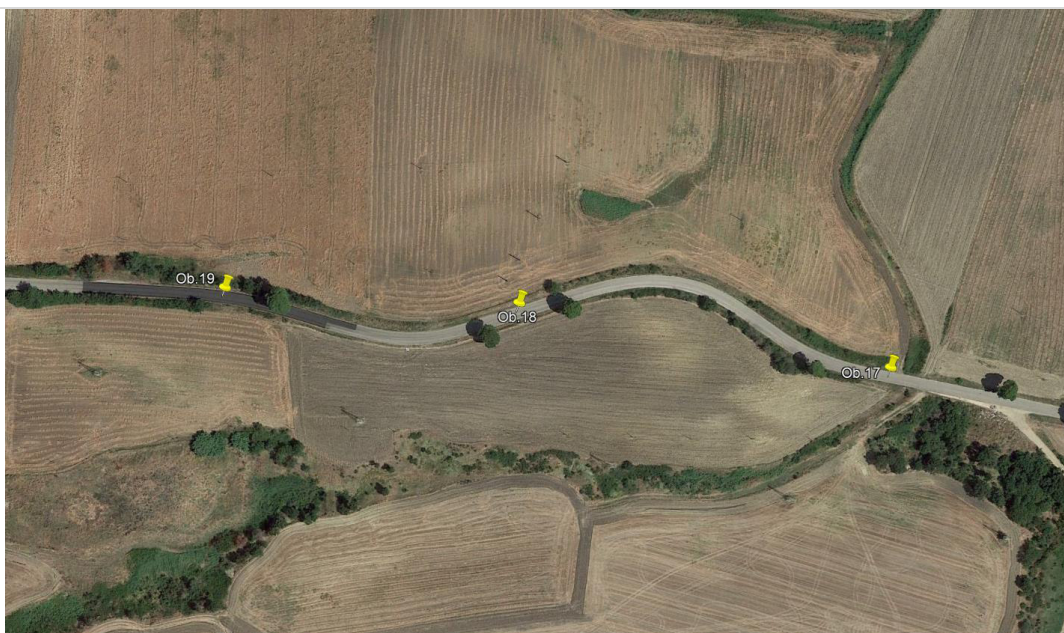
From trasshipment area, all cables must be over 6,0 mt in height.



OB.16

Coord. 41°47'4.98"N - 15°13'6.86"E

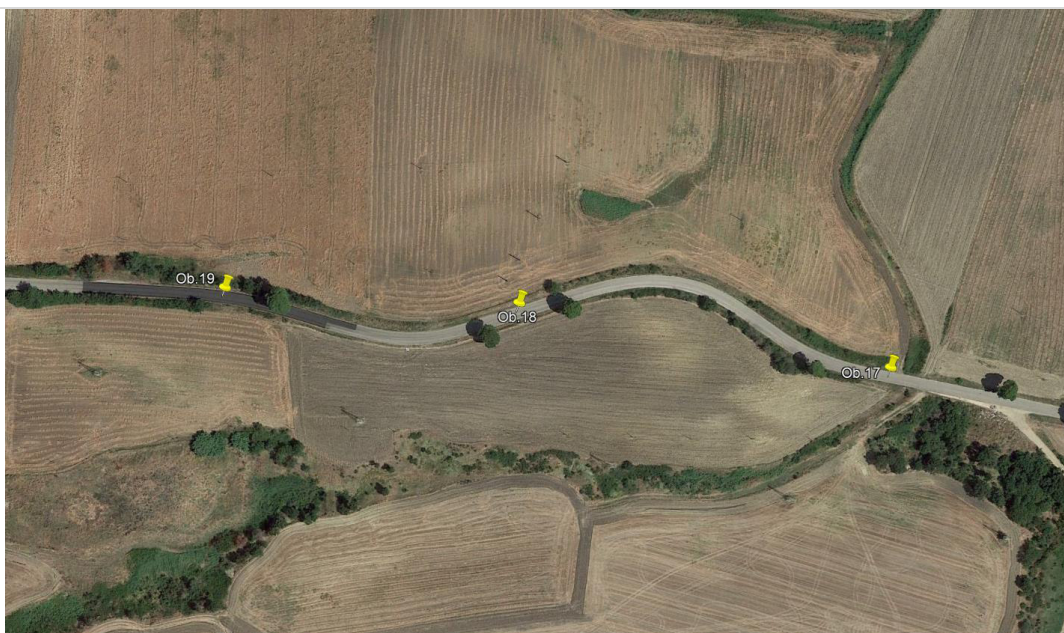
Start of by-pass n° 4
Make by-pass well compacted and leveled, to be built as per specifications.



OB.17

Coord. 41°47'11.36"N - 15°12'28.57"E

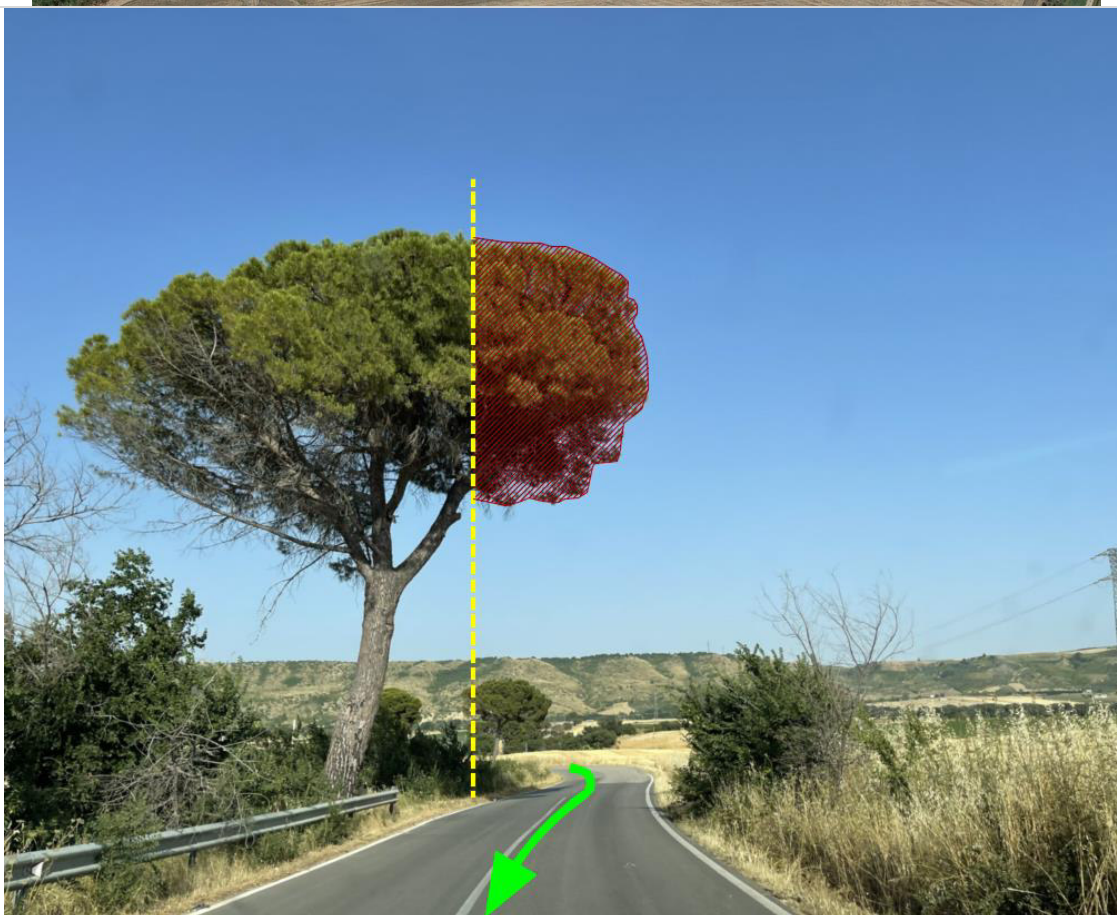
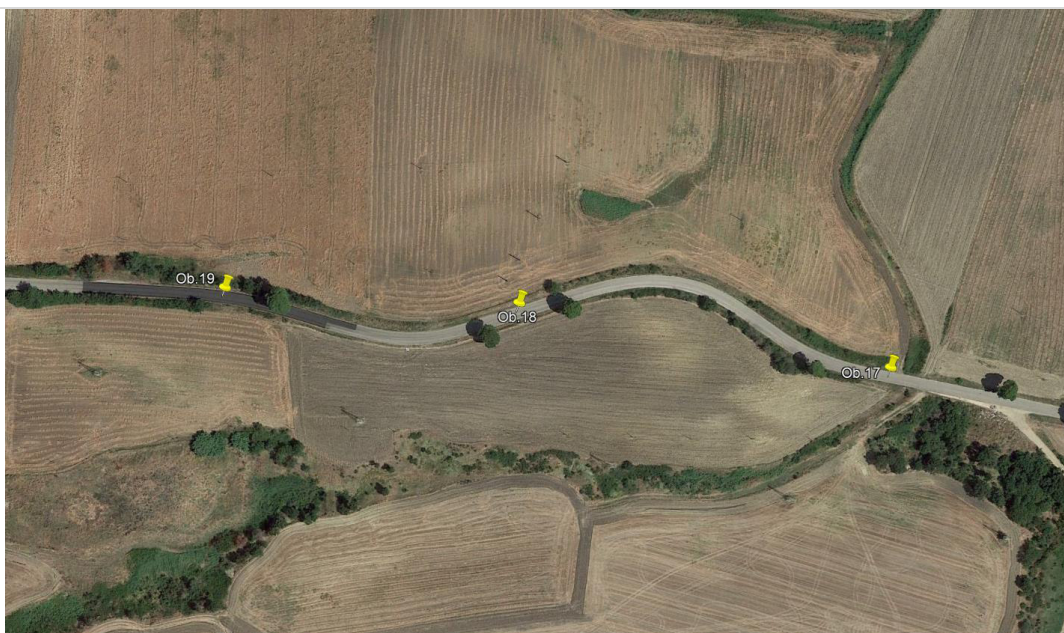
Remove the cables as shown in the photo.



OB.18

Coord. 41°47'12.48"N - 15°12'19.90"E

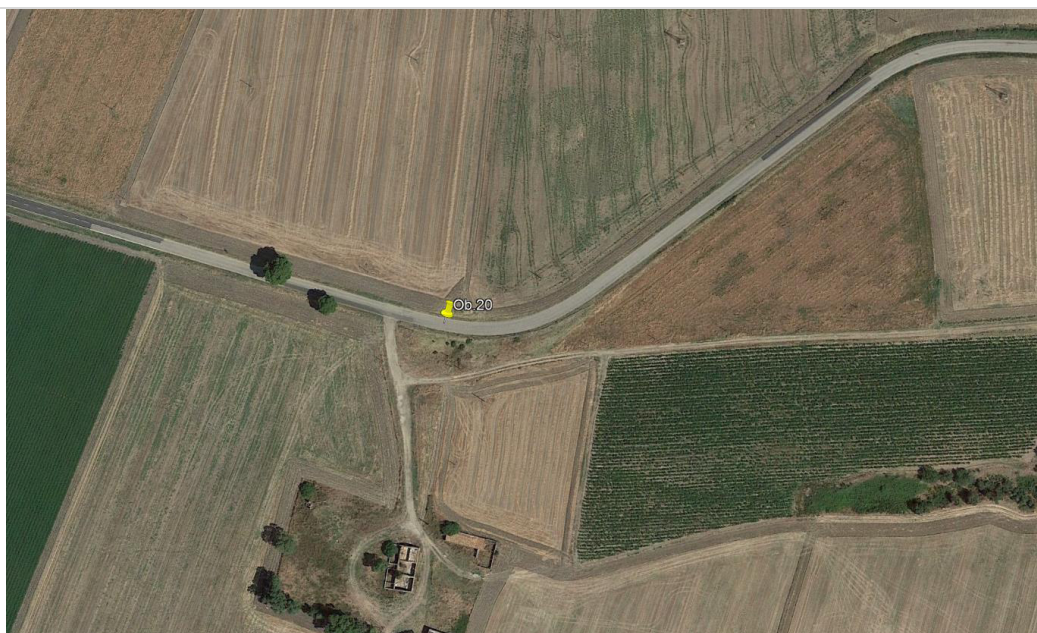
Cut the protruding vegetation on the roadway, as shown in the photo.



OB.19

Coord. 41°47'12.75"N - 15°12'13.02"E

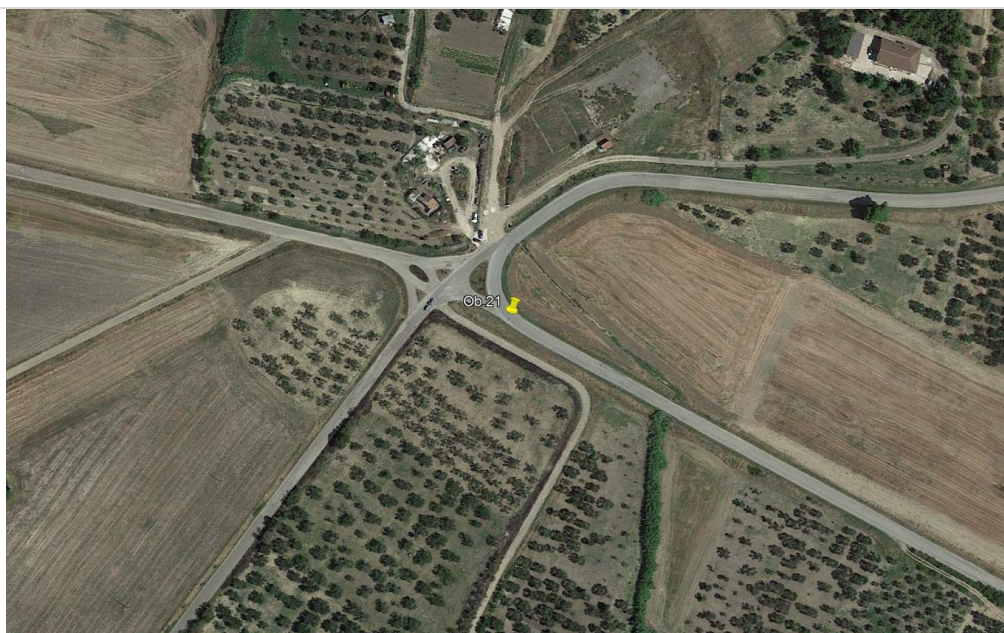
Cut the protruding vegetation on the roadway, as shown in the photo.



OB.20

Coord. 41°47'8.37"N - 15°11'51.62"E

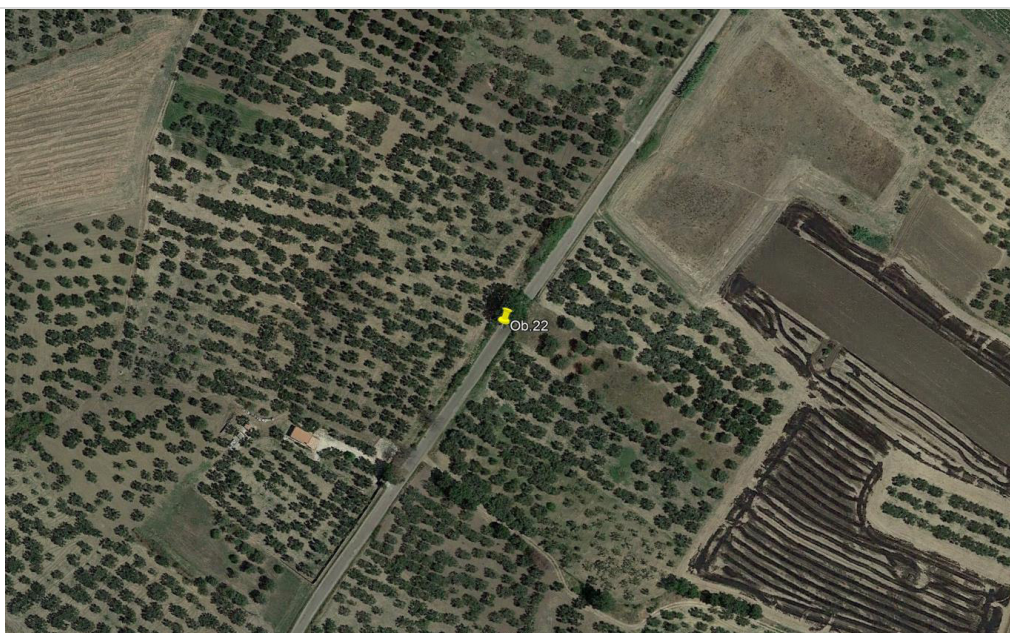
Remove the cable as shown in the photo.



OB.21

Coord. 41°47'47.01"N - 15° 9'25.47"E

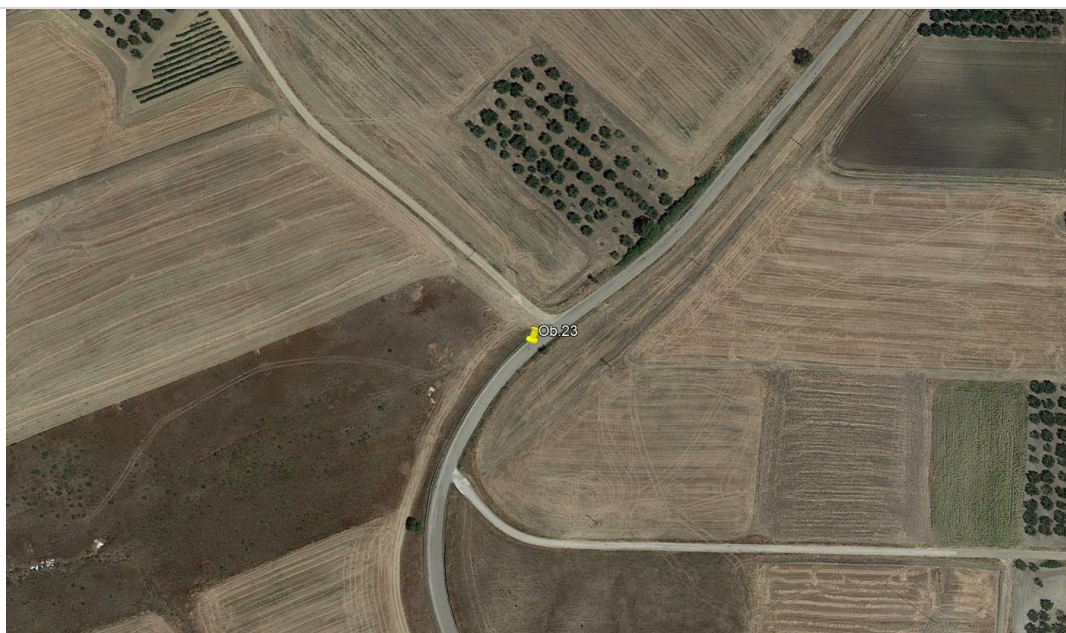
Make the maneuver in the opposite direction.
Level the road hump.



OB.22

Coord. 41°47'28.65"N - 15° 9'5.57"E

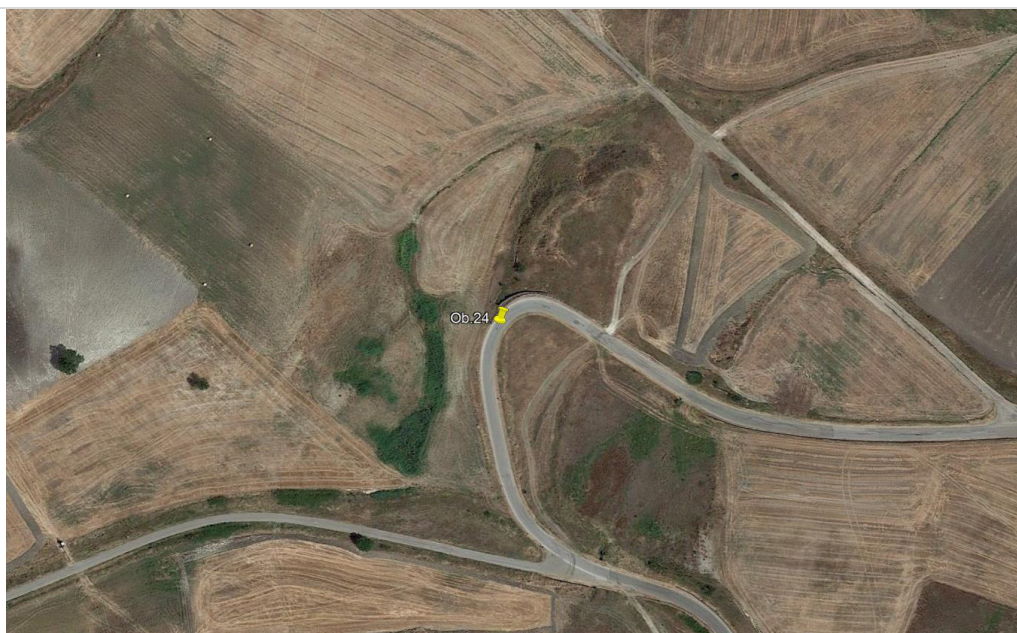
Cut the protruding vegetation on the roadway, as shown in the photo.



OB.23

Coord. 41°46'28.35"N - 15° 7'46.62"E

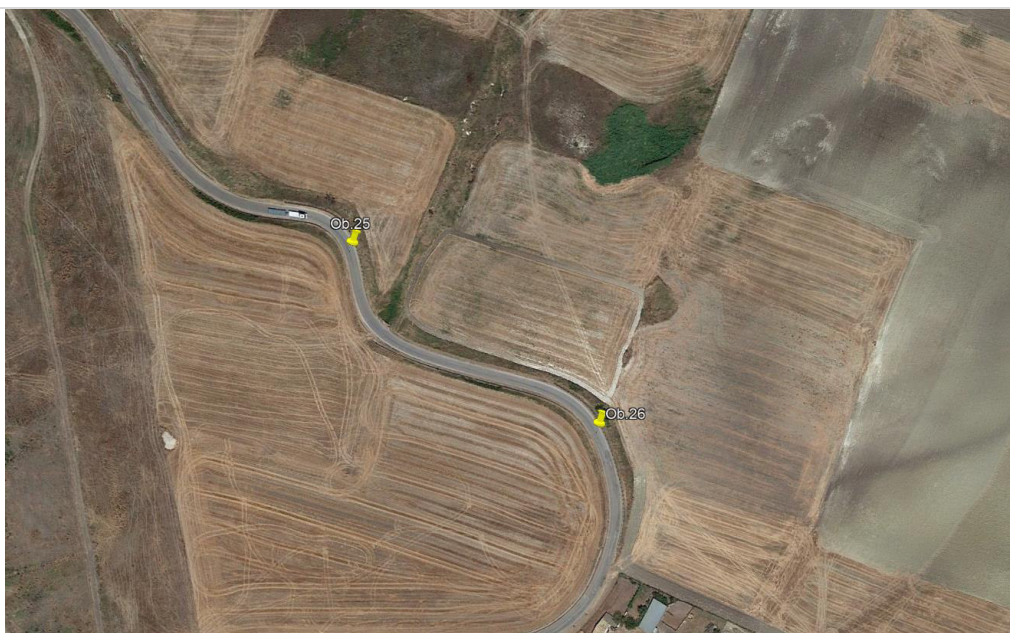
Remove the cables as shown in the photo.



OB.24

Coord. 41°43'30.41"N - 15° 2'43.14"E

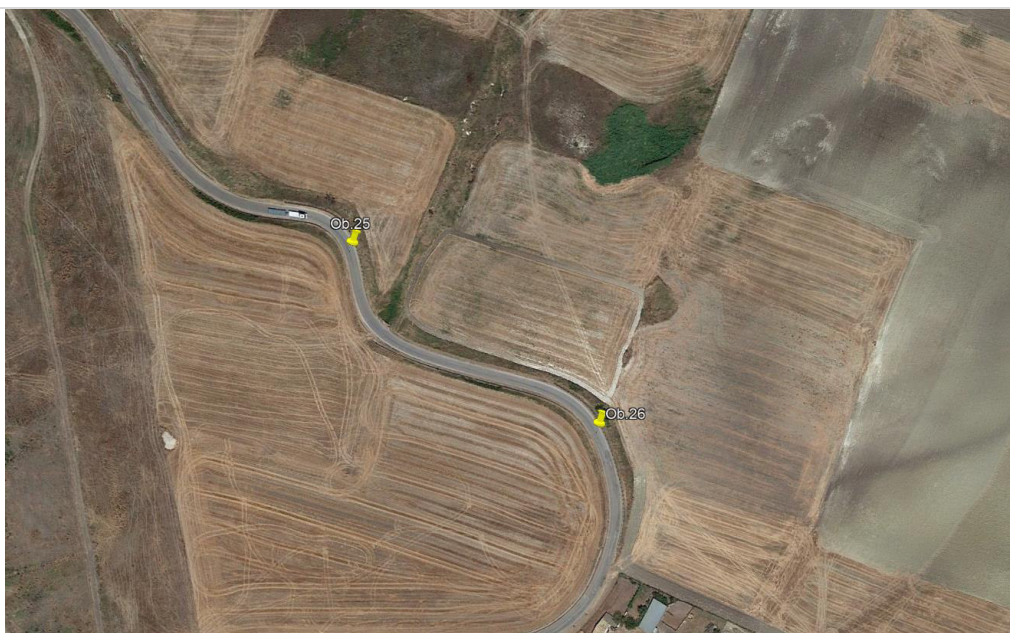
Make a driveway enlargement, well compacted and leveled, of 5,00 meters on the left side, as shown in the photo.



OB.25

Coord. 41°43'22.09"N - 15° 2'53.48"E

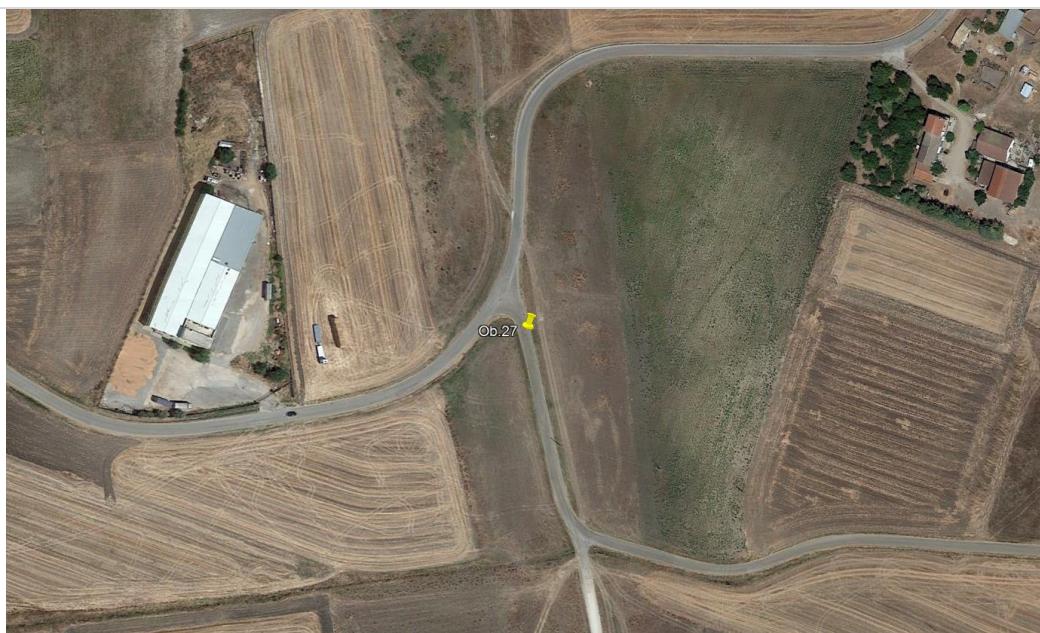
Remove the portion of the concrete wall.
Make a driveway enlargement, well compacted and leveled, of 3,00 meters on the right side,
as shown in the photo.



OB.26

Coord. 41°43'19.24"N - 15° 2'58.68"E

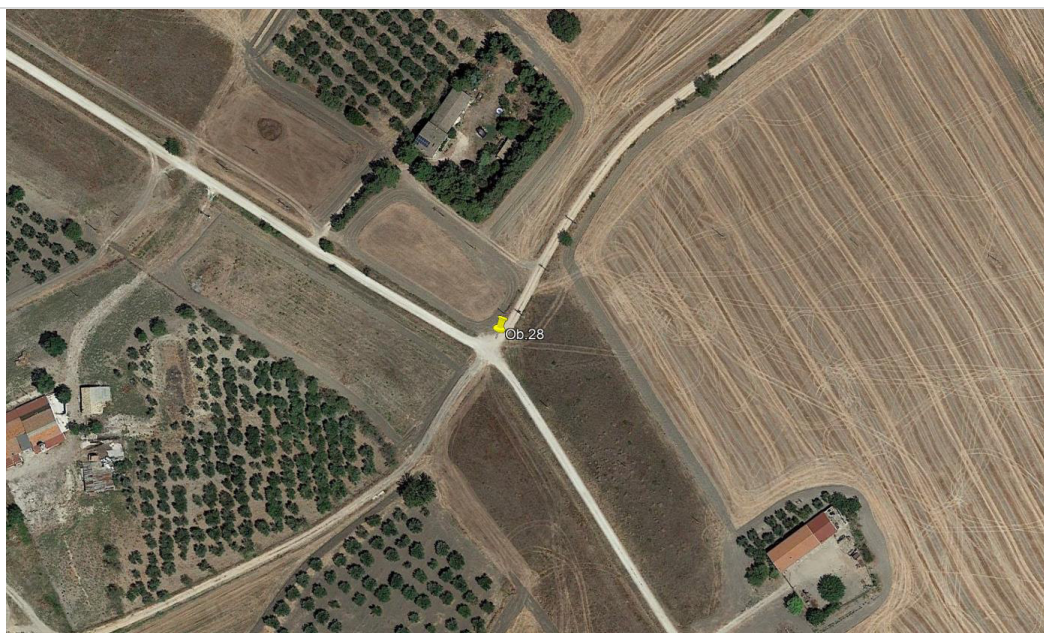
Make a driveway enlargement, well compacted and leveled, of 2,00 meters on the right side, as shown in the photo.



OB.27

Coord. 41°43'11.24"N - 15° 2'49.33"E

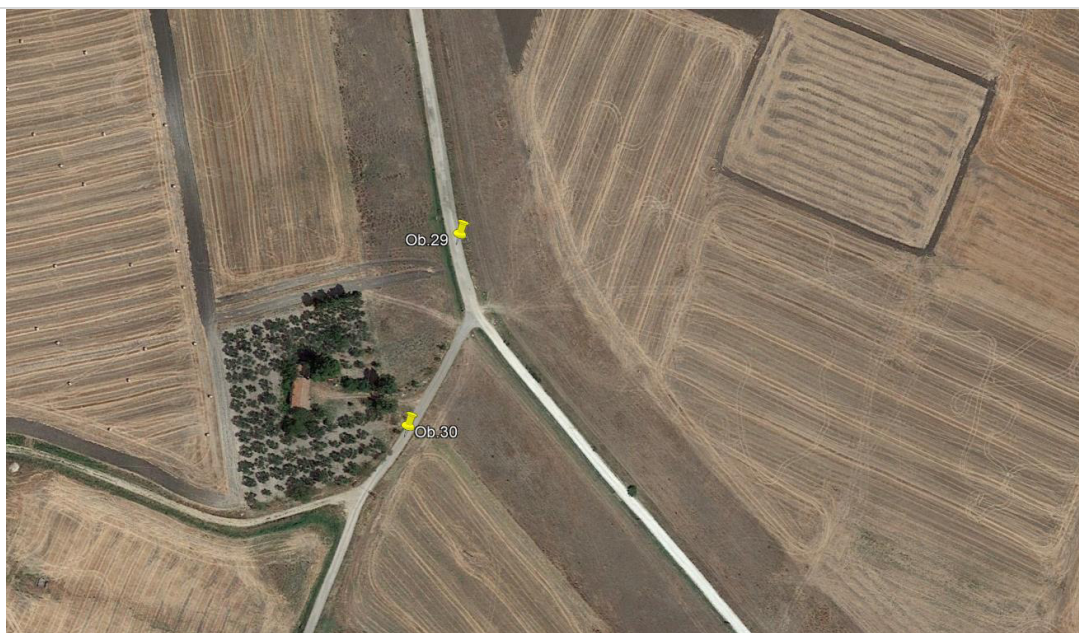
Make the maneuver in the opposite direction.



OB.28

Coord. 41°42'16.45"N - 15° 3'57.06"E

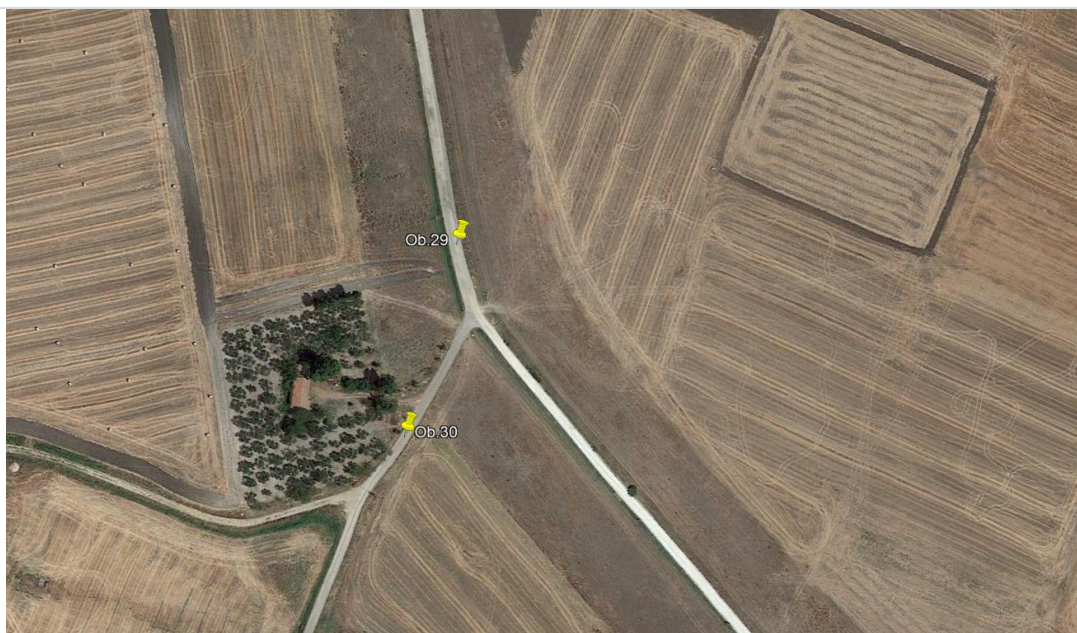
Make a driveway enlargement, well compacted and leveled, on the right side,
as shown in the photo.
From this point on, make the access to the emplacement; viability to be built as per specifications.



OB.29

Coord. 41°42'56.51"N - 15° 2'53.05"E

Start of by-pass n° 5
Make by-pass well compacted and leveled, to be built as per specifications.



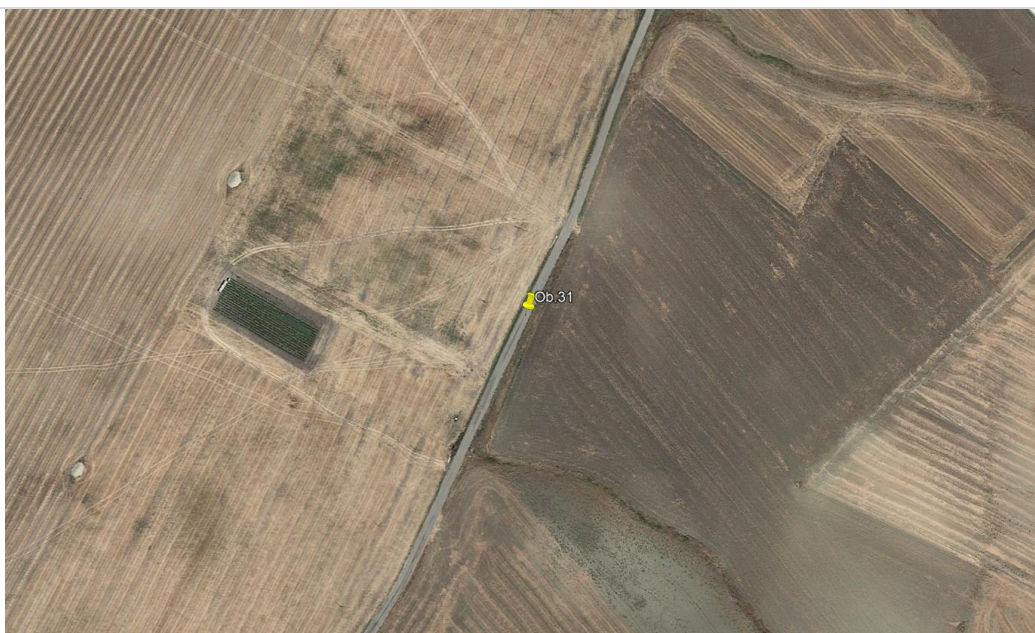
OB.30

Coord. 41°42'53.68"N - 15° 2'52.03"E

Make a driveway enlargement, well compacted and leveled, of 3,00 meters on the right side, as shown in the photo.

Make a driveway enlargement, well compacted and leveled, of 2,00 meters on the left side, as shown in the photo.

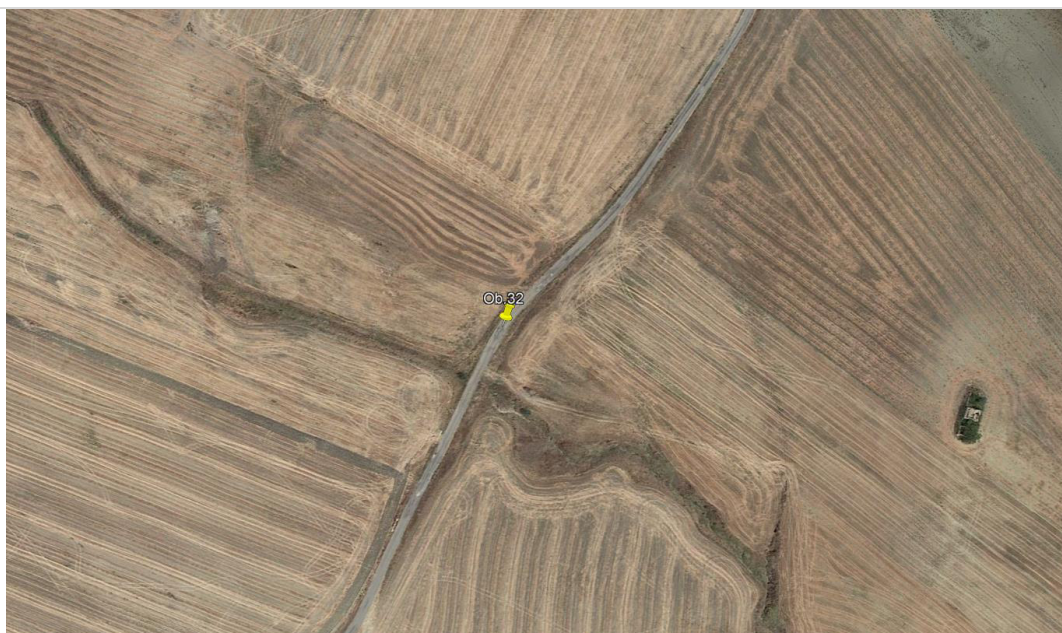
Cut the three indicated in the photo.



OB.31

Coord. 41°42'45.56"N - 15° 2'47.31"E

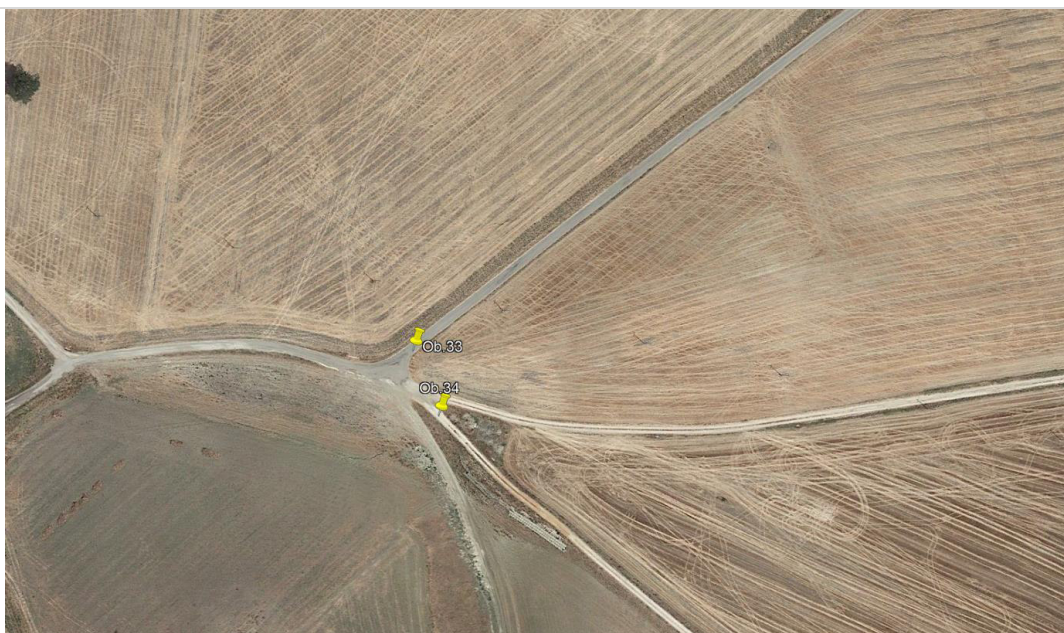
Arrangement and leveling of the road surface with closing of the potholes and depression present, as indicated in the photo.



OB.32

Coord. 41°42'36.63"N - 15° 2'39.74"E

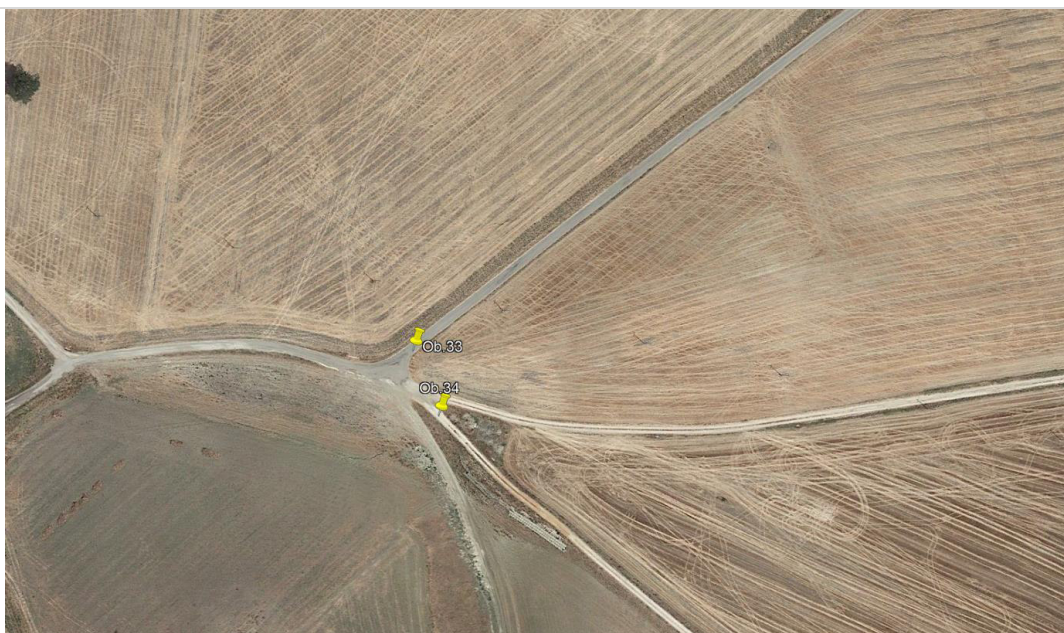
Arrangement and leveling of the road surface with closing of the potholes and depression present, as indicated in the photo.



OB.33

Coord. 41°42'13.14"N - 15° 2'9.31"E

Make a driveway enlargement, well compacted and leveled, of 10,00 meters on the left side, as shown in the photo.



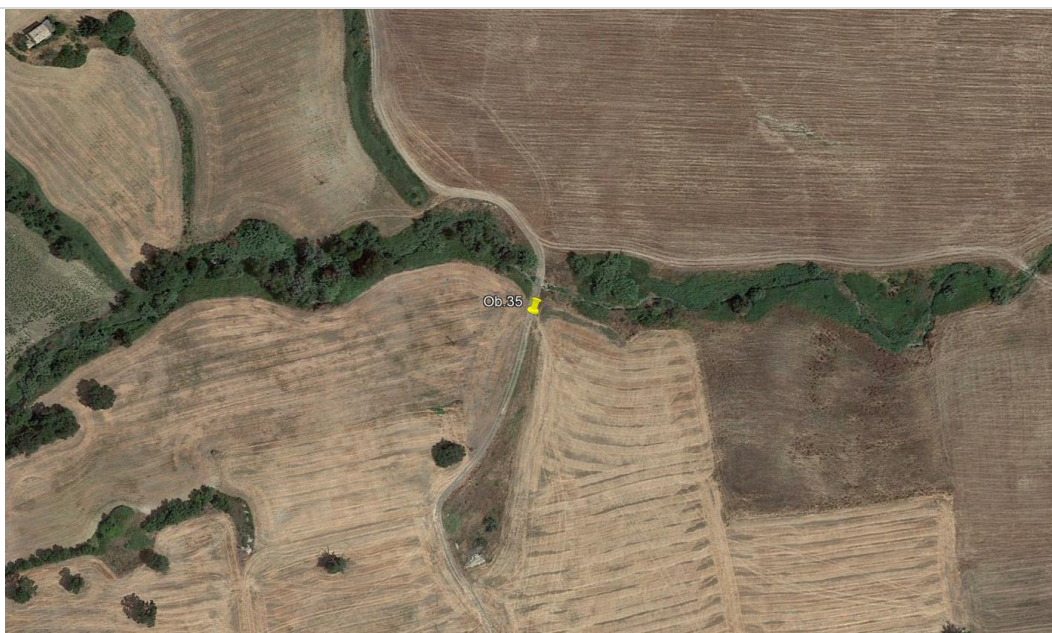
OB.34

Coord. 41°42'12.25"N - 15° 2'9.78"E

Start of by-pass n° 6

Use the existing sheep track as a by-pass; the by-pass must be well compacted and leveled,
to be built as per specifications.

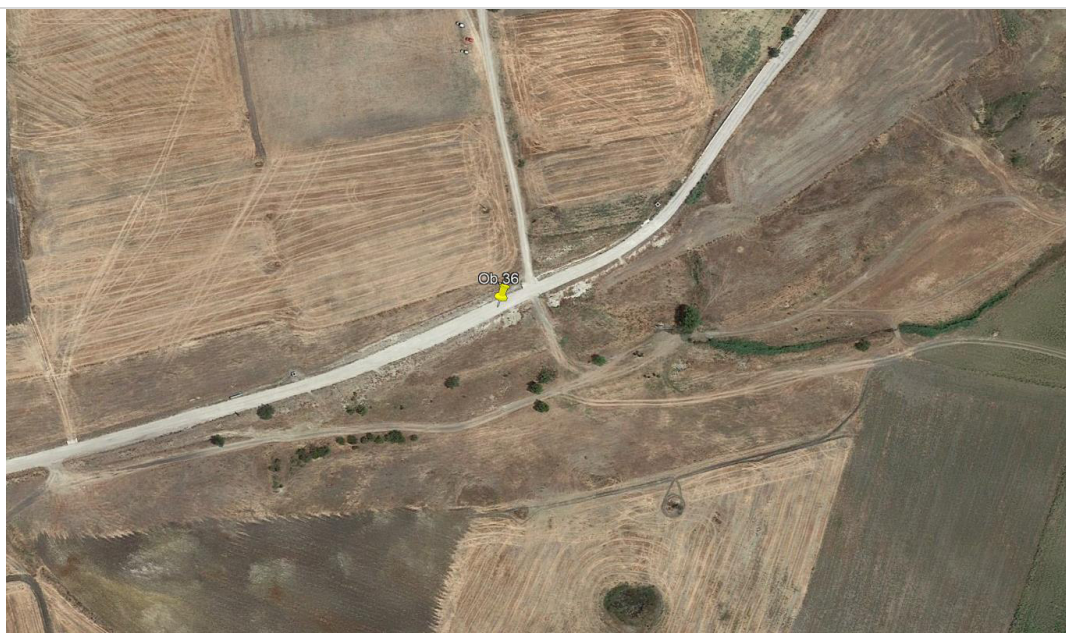
Connect the level curve of the existing sheep track (by-pass) with the road system.



OB.35

Coord. 41°41'54.31"N - 15° 2'20.44"E

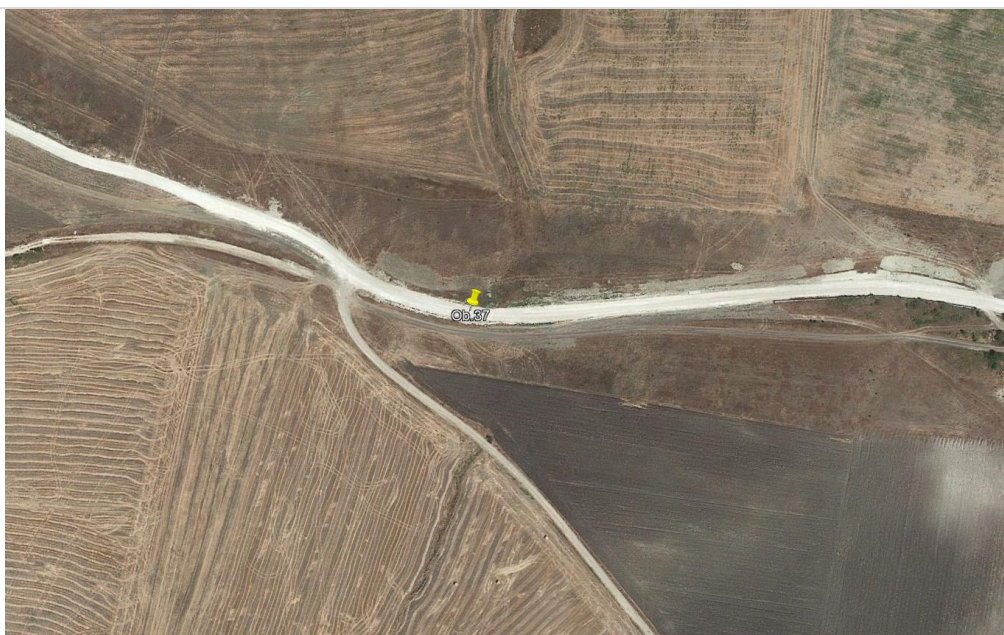
By-pass n° 6
During the by-pass n° 6, fill the ditch, as per specifications.



OB.36

Coord. 41°40'56.48"N - 15° 2'30.78"E

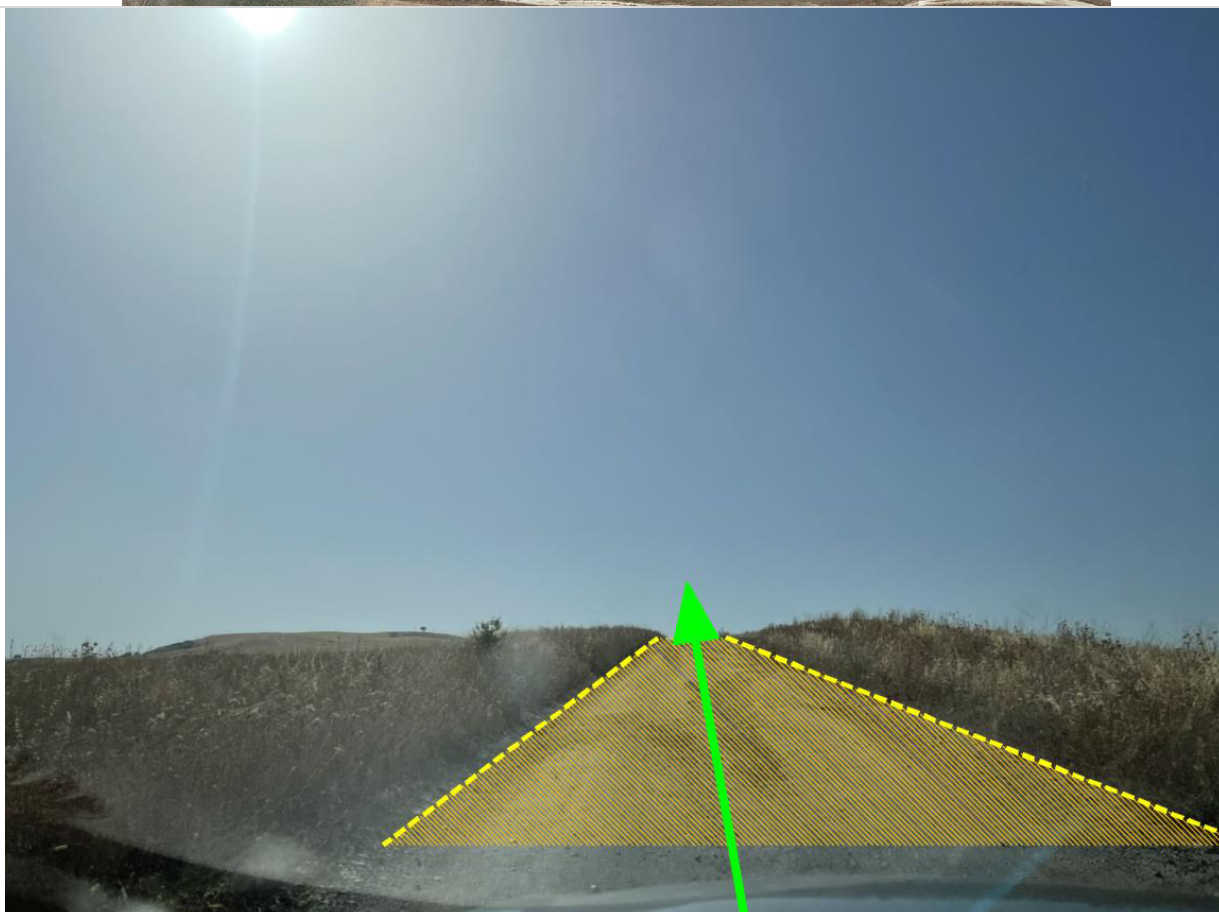
End of by-pass n° 6
Make a driveway enlargement, well compacted and leveled, of 30,00 meters on the right side,
as shown in the photo.
Connect the level curve of the existing sheep track (by-pass) with the road system.



OB.37

Coord. 41°40'55.14"N - 15° 1'29.10"E

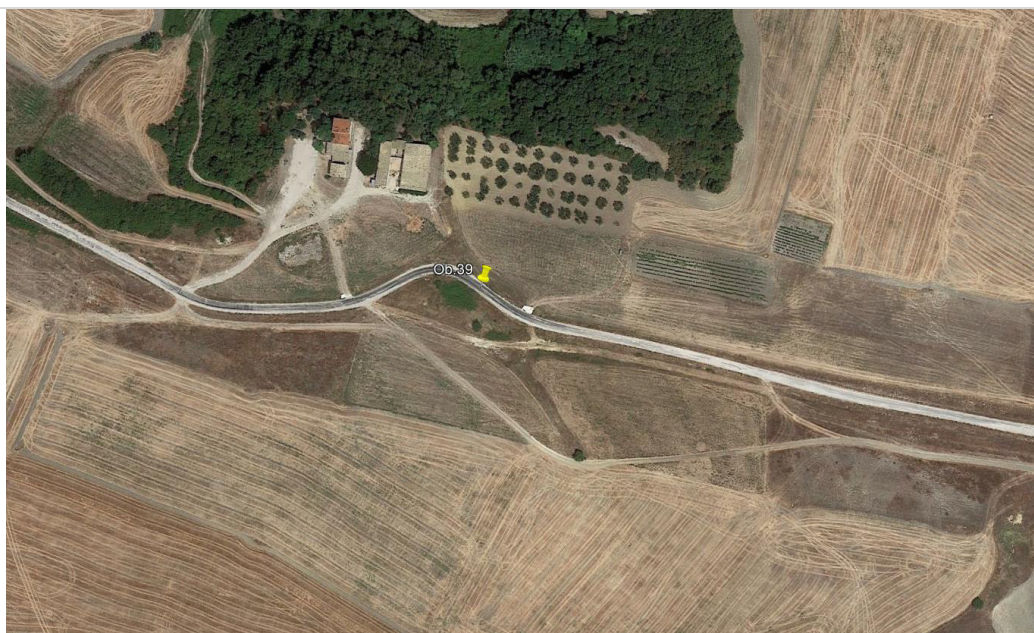
Make a driveway enlargement, well compacted and leveled, on the left side,
as shown in the photo.
From this point on, make the access to the emplacement; viability to be built as per specifications.



OB.38

Coord. 41°41'0.98"N - 15° 1'12.41"E

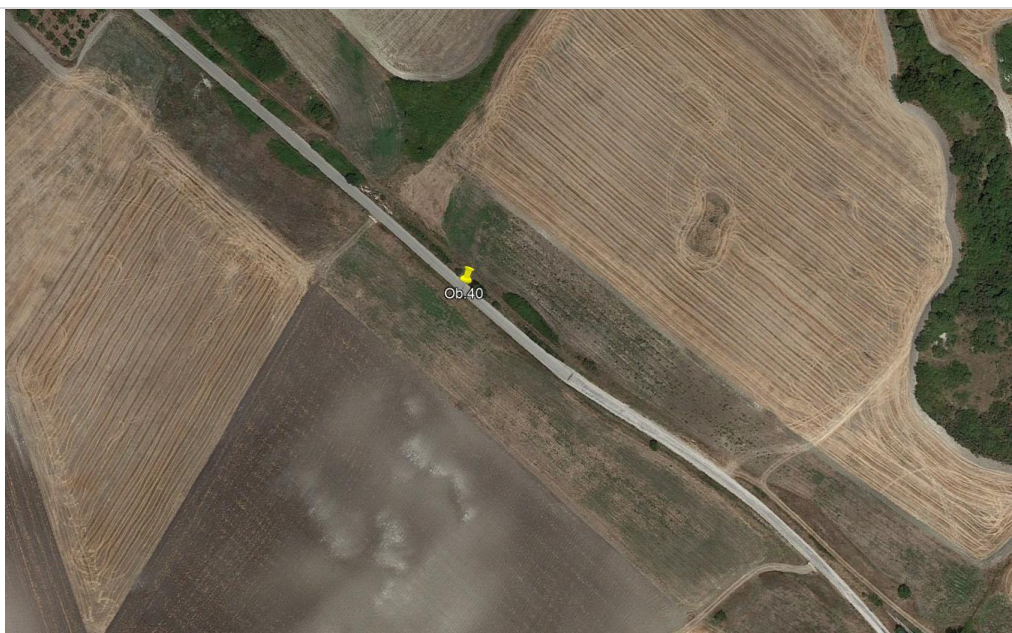
Arrangement and leveling of the road surface with closing of the potholes and depression present, as indicated in the photo.



OB.39

Coord. 41°41'14.48"N - 15° 0'25.54"E

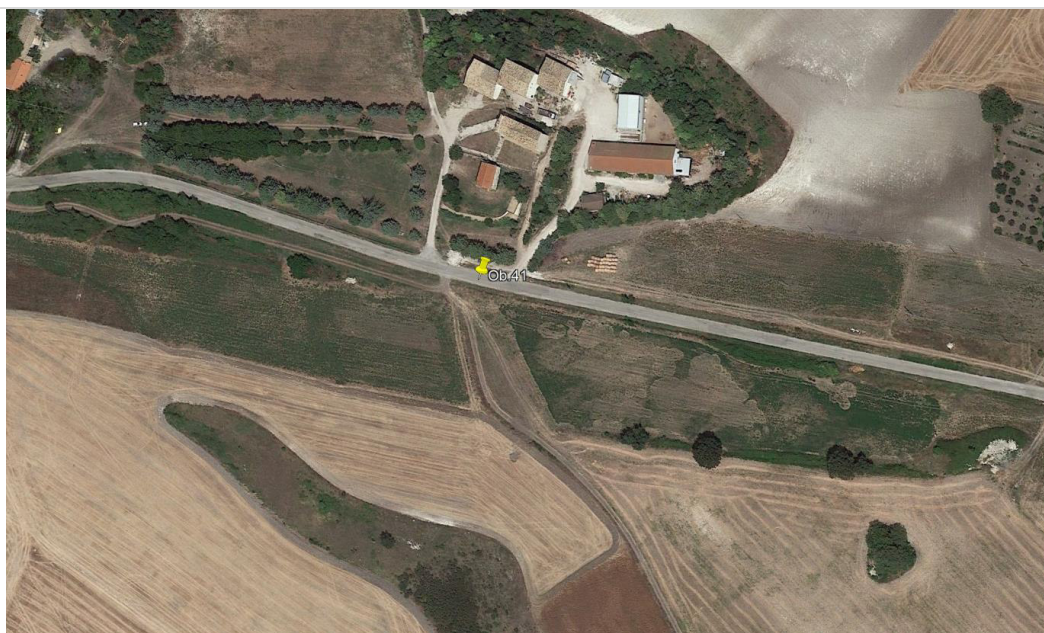
Make a driveway enlargement, well compacted and leveled, of 5,00 meters on the left side, as shown in the photo.



OB.40

Coord. 41°41'22.13"N - 15° 0'5.30"E

From this point on, make the access to the emplacement; viability to be built as per specifications.



OB.41

Coord. 41°41'47.40"N - 14°59'21.49"E

From this point on, make the access to the emplacement; viability to be built as per specifications.

Conclusions and Highlighted

- Attention, it should be noted that the maximum diameter of the wind tower must not exceed 4500 mm in diameter.
- Every air electric and phone cables must to be at least 6,00 mt high.
- The feasibility studies and activities suppose owner's availability for transiting and making civil works on their farmsteads.
- The survey road report has referred to the date 29/07/2021 therefore variations and/or changes of practicability state will be evaluated subsequently.
- For transport activities related to site and new roads, refer to Vestas guidelines.
- Before starting/ending the transport, it will be necessary to verify and report the road condition. To this end, the transporter will be relieved of any damage to the road network.