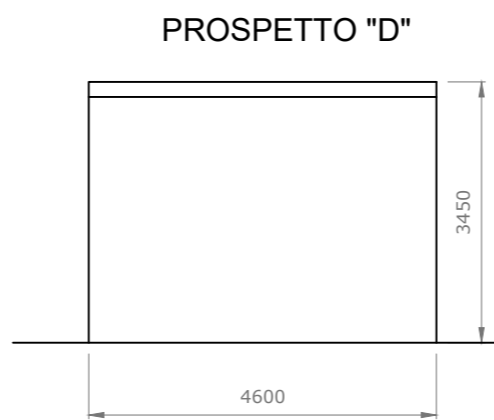
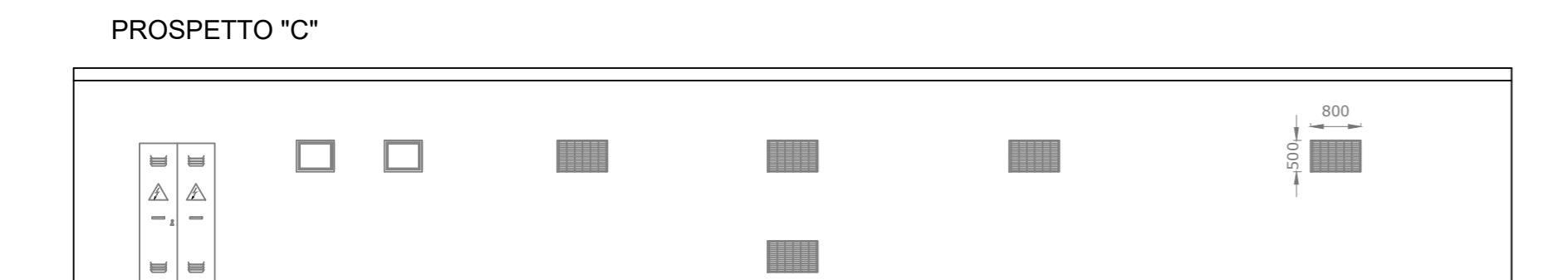
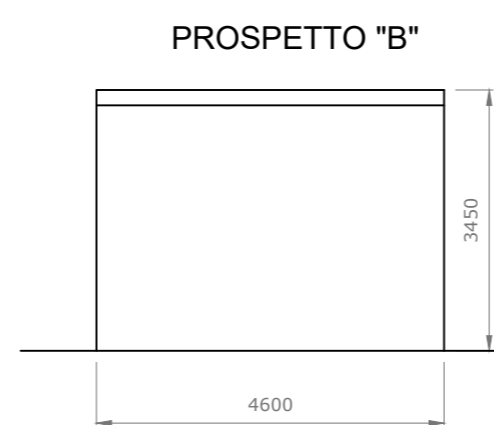
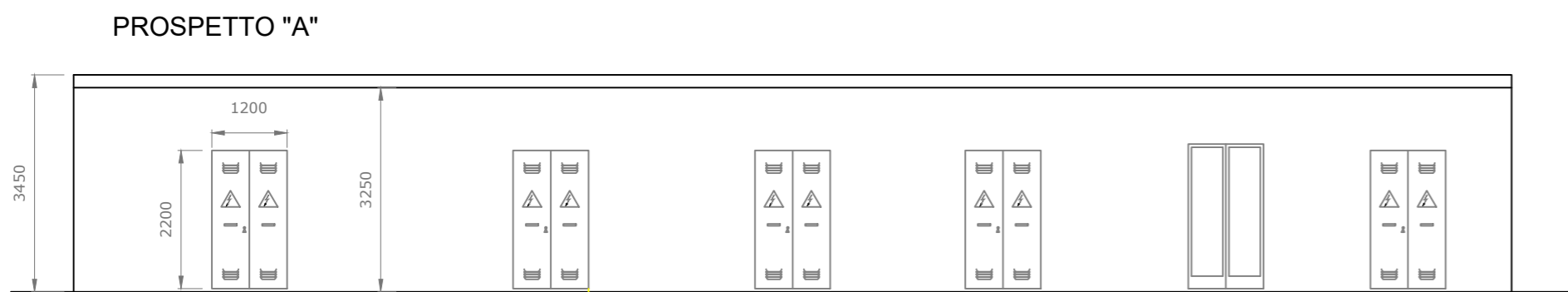
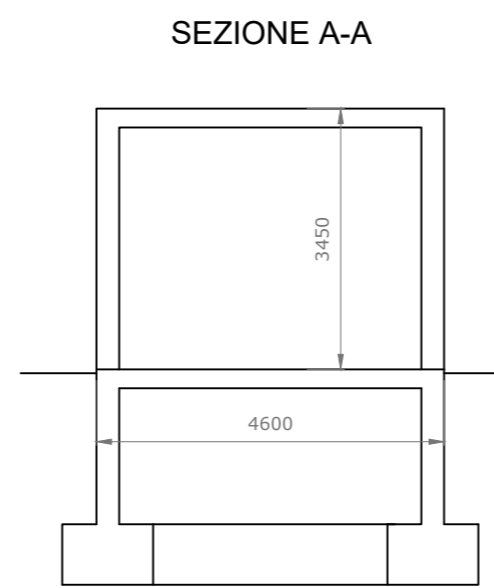
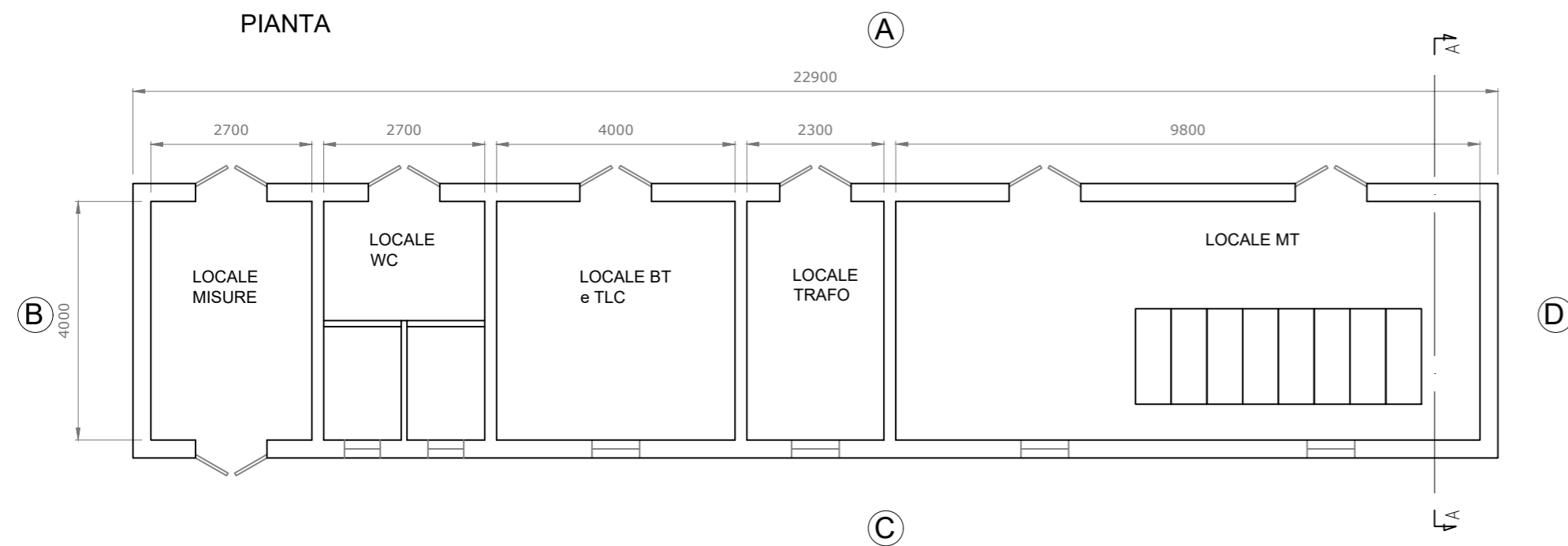
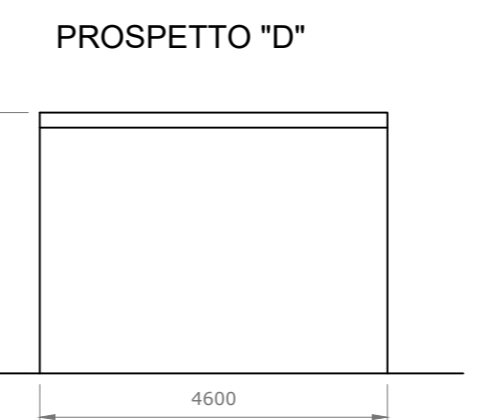
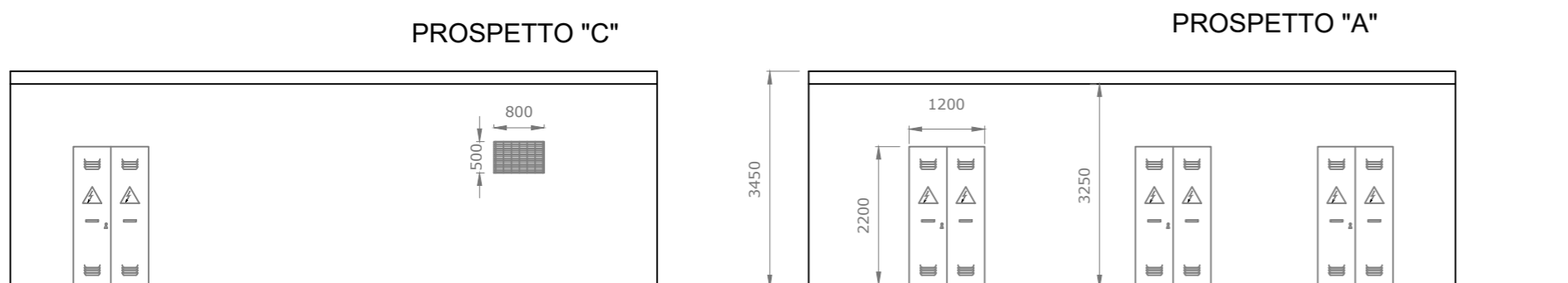
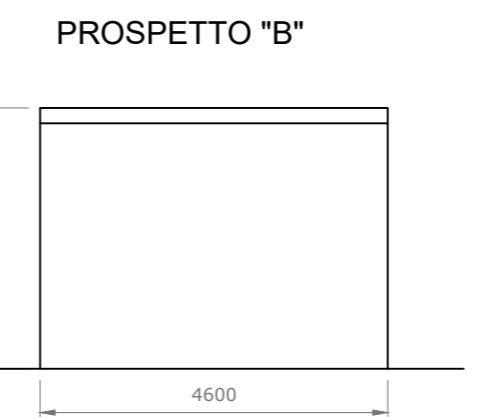
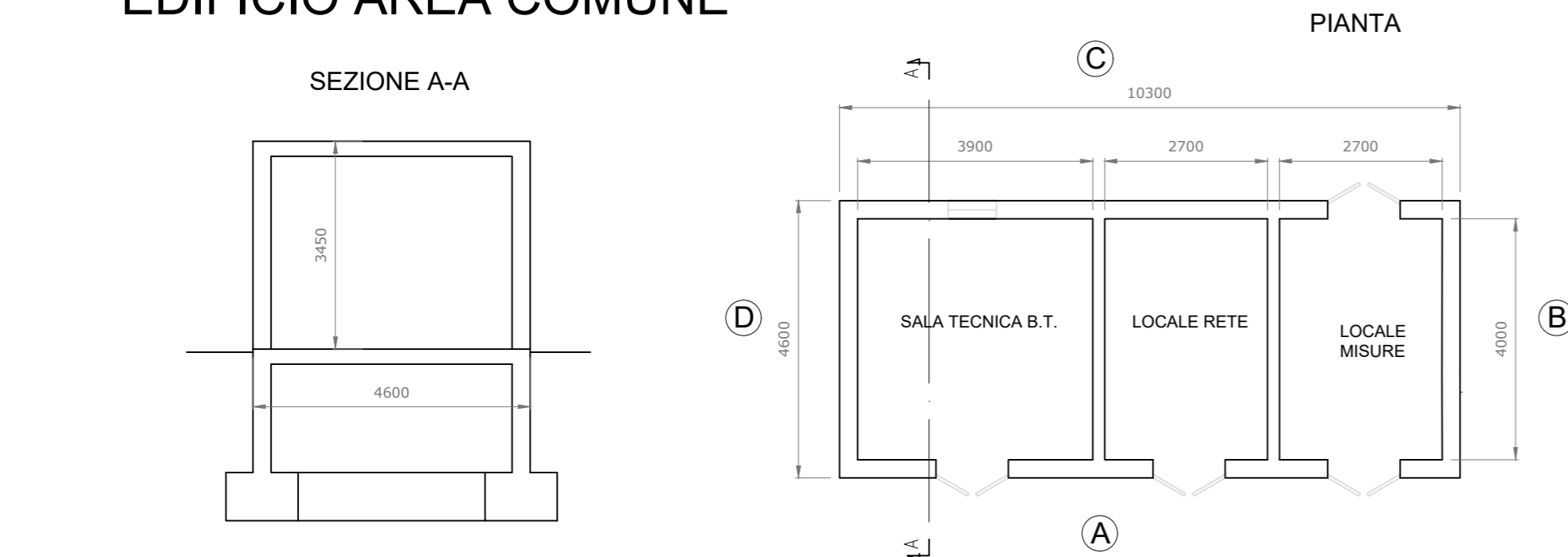


EDIFICIO PRODUTTORE



EDIFICIO AREA COMUNE



REGIONE SICILIA		
Livello di progettazione/Level of design		
Progetto Definitivo		
Oggetto/Object		
PROGETTO LIMONE Realizzazione impianto agrovoltaco in area agricola		
Elaborato/Drawing		
Stazione di Utenza e collegamento alla rete - Pianta e prospetti edificio quadri		
Formato/Size	Scala/Scale 1:100	Codice/code MITEPUATAV122S1
A2	Data/Date 15/03/2024	
	Nome file/File name	MITEPUATAV122S1.DWG
Revision 00	Date 05/05/2022	Description Prima emissione
Revision 01	Date 15/03/2024	Description Aggiornamento dati societari
Commissa/Project order		
Progettazione Impianto Agrovoltaco		
Drawed: Ing. Alessandro Daidone	Checked: Ing. Giovanni Saraceno	Approved: Ing. Giovanni Saraceno
Committente/Customer		
NEREIDI S.R.L. Corso Buenos Aires 54, 20124 Milano (MI) P.IVA: 02050550892		
Progettazione e sviluppo/Planning and development		
ICS S.P.A. Via Lorenzo Mascheroni, 5, 20123, Milano (MI) +39(0) 0931 999730 - P.IVA: 00485050892		
Project Manager: Ing. Raimondo Barone		

