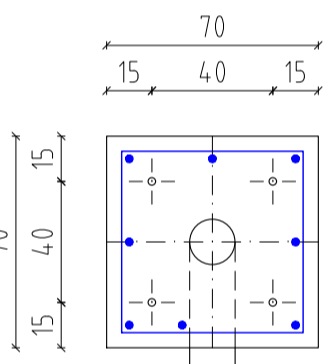
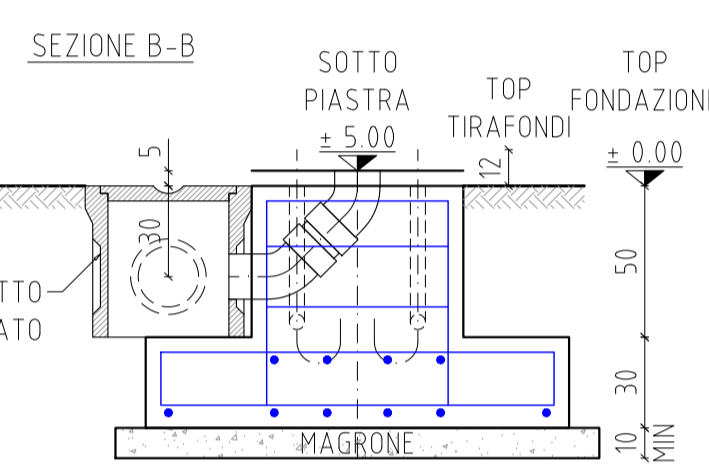
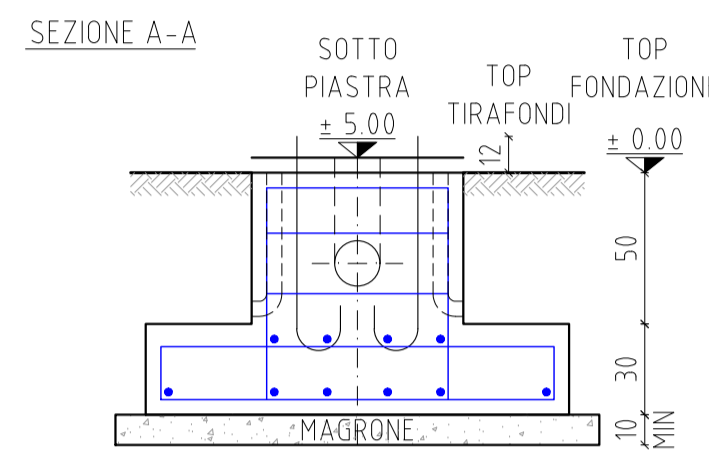
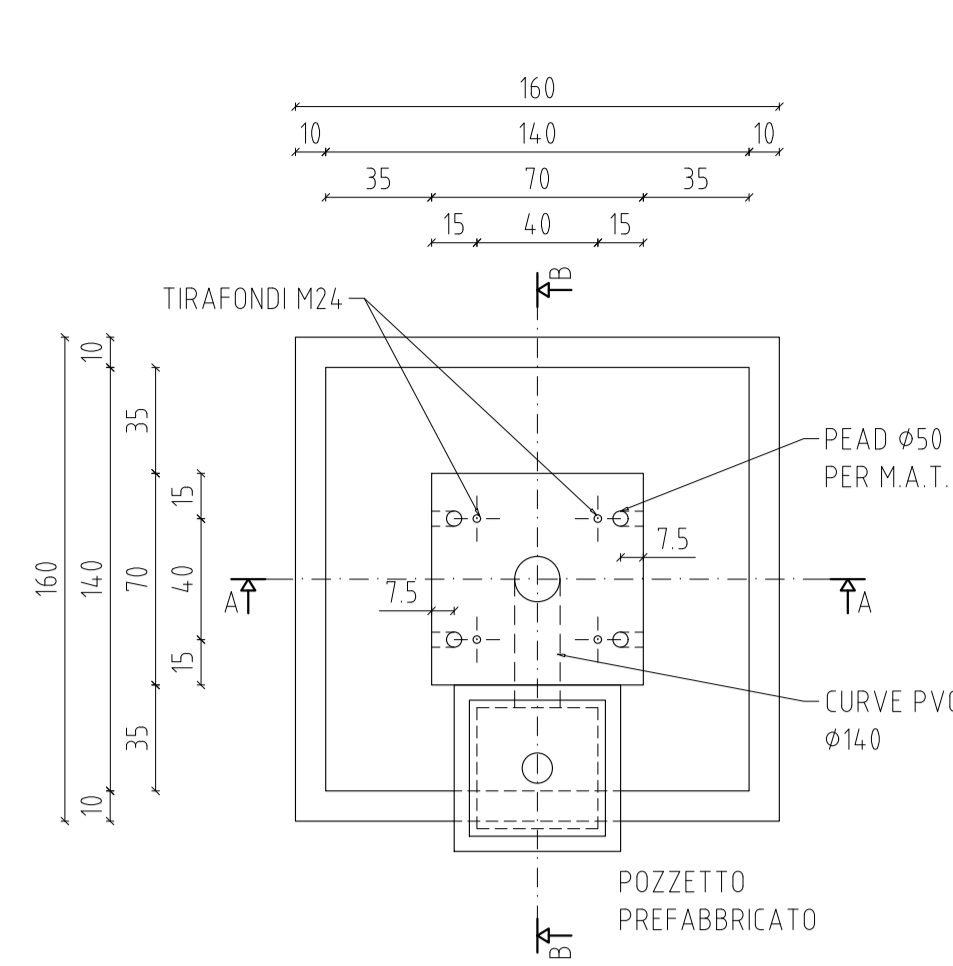
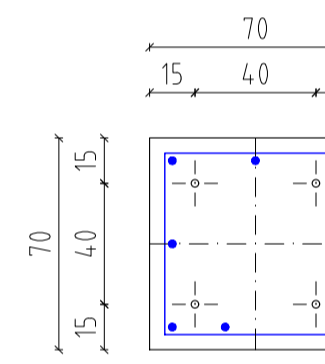
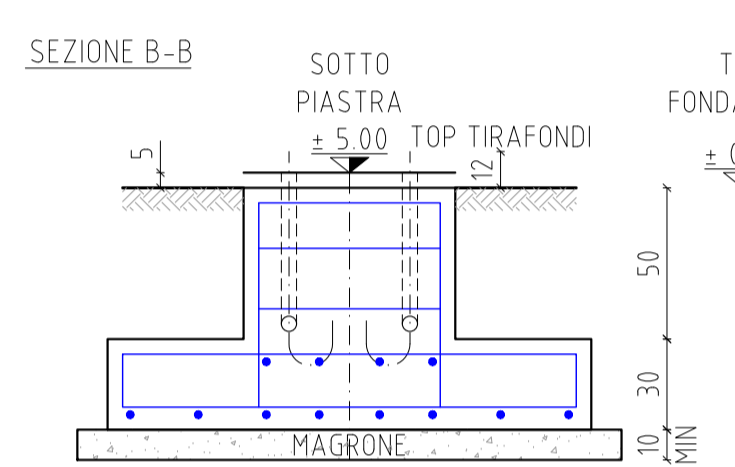
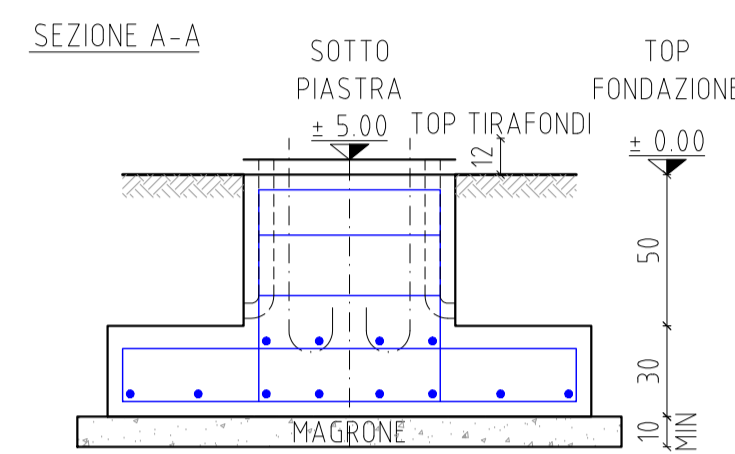
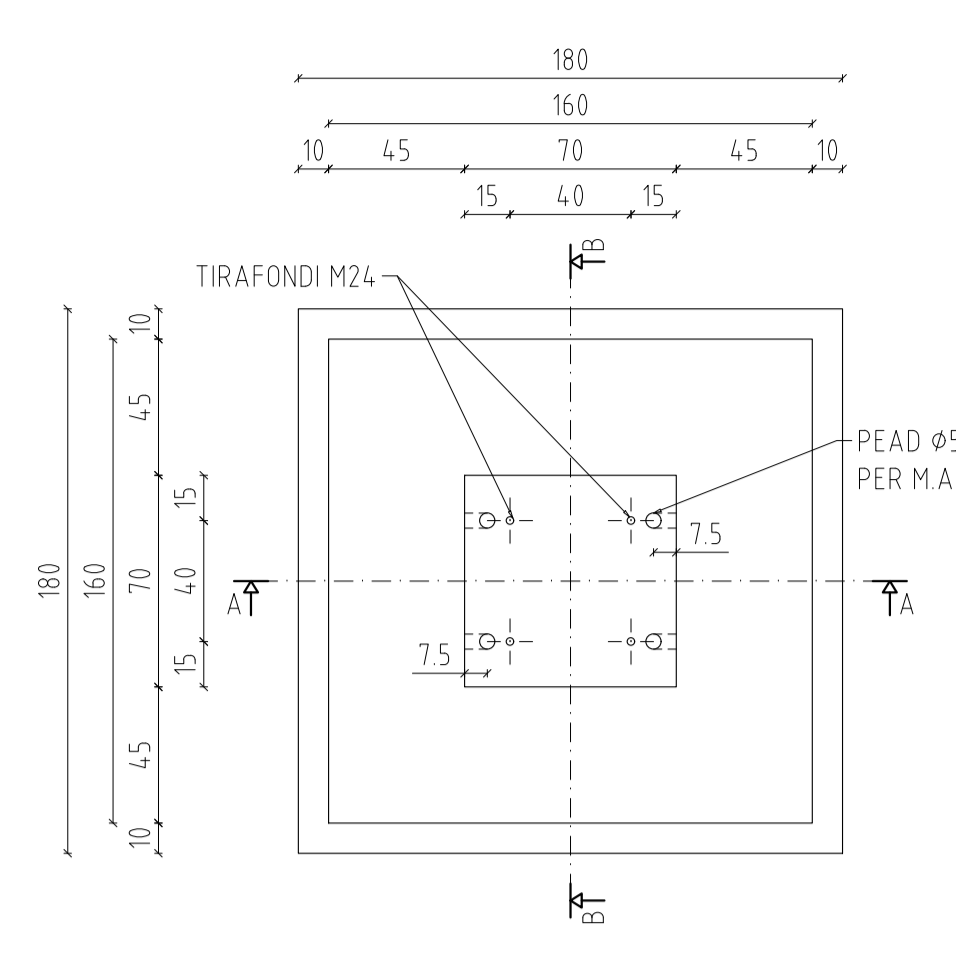


FONDAZIONE TV - TA - ISOLATORE  
(Scala 1:25)



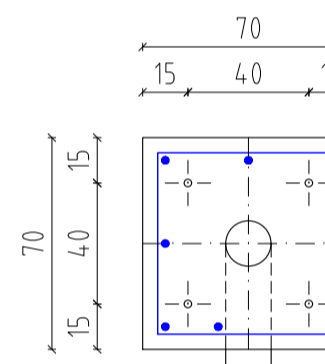
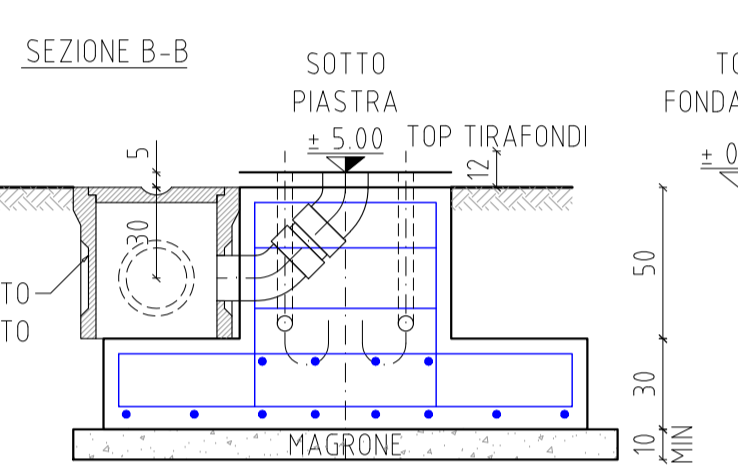
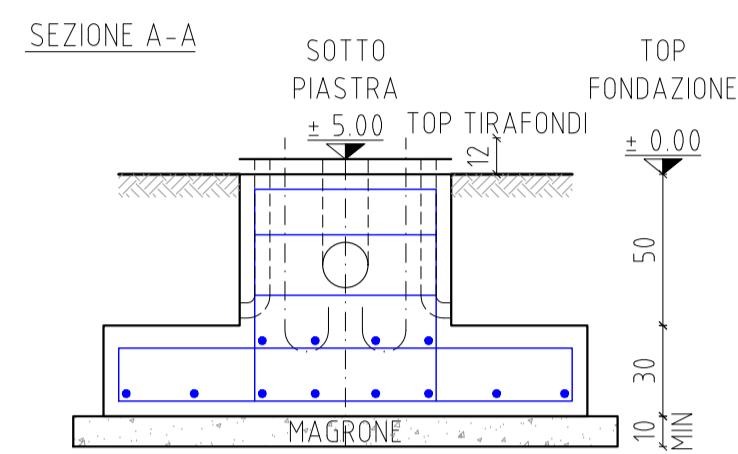
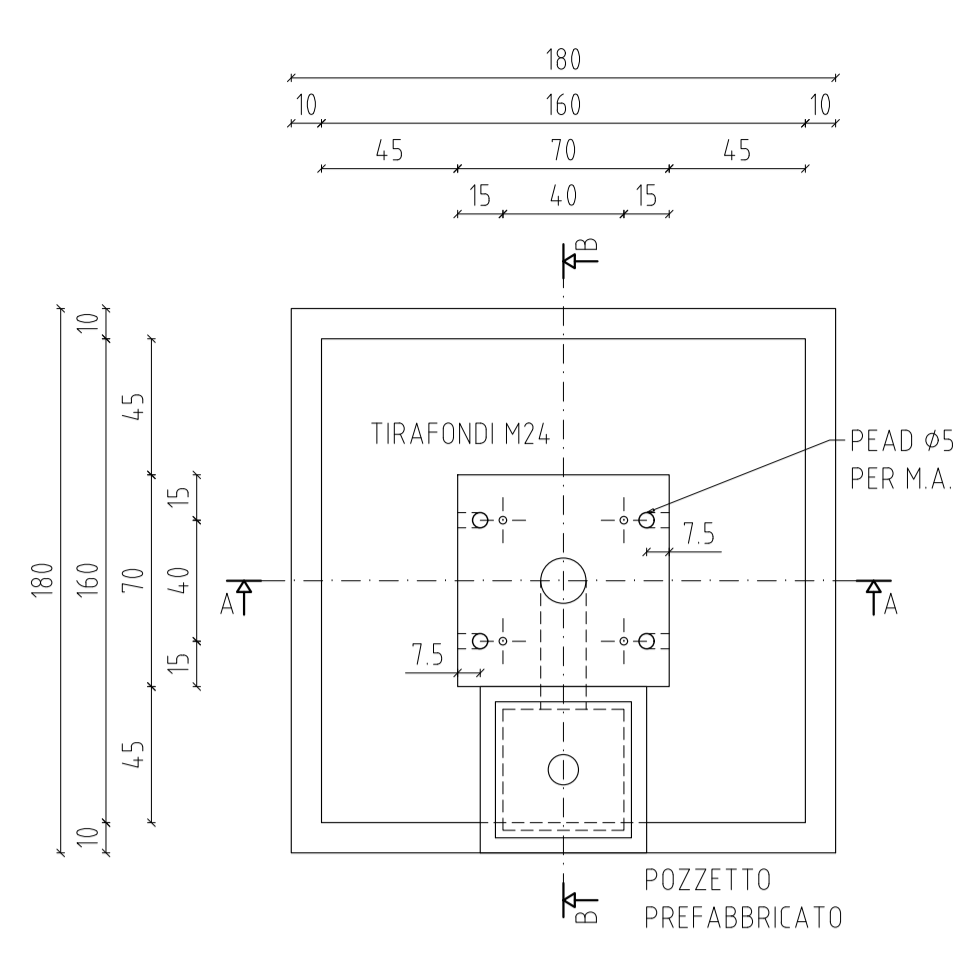
Pos.	N.	Diam. mm	Lung. cm	Peso Unit. daN	PESO daN
1	1 x 8	Ø 12	85	0.888	6.0
2a	1 x 4	Ø 12	320	0.888	11.4
2b	1 x 2	Ø 12	161	0.888	2.9
3a	1 x 4	Ø 12	320	0.888	11.4
3b	1 x 2	Ø 12	161	0.888	2.9
4	1 x 3	Ø 10	260	0.617	4.8
<b>TOTALE</b>					<b>39.4</b>

FONDAZIONE PORTALE SBARRE 1  
(Scala 1:25)



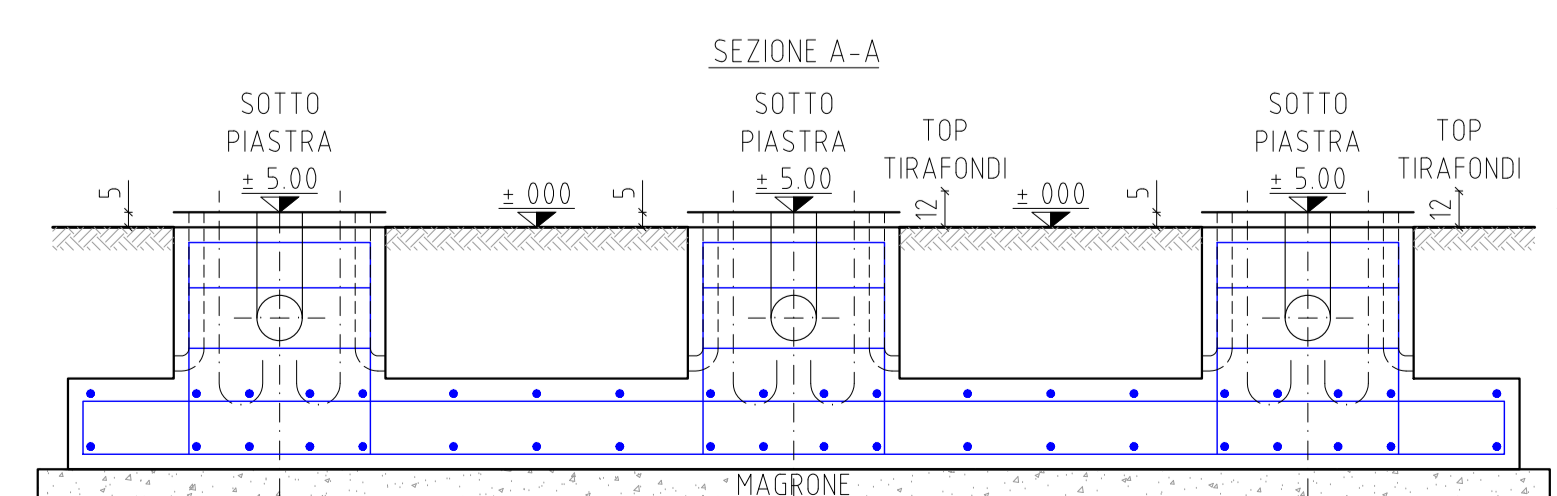
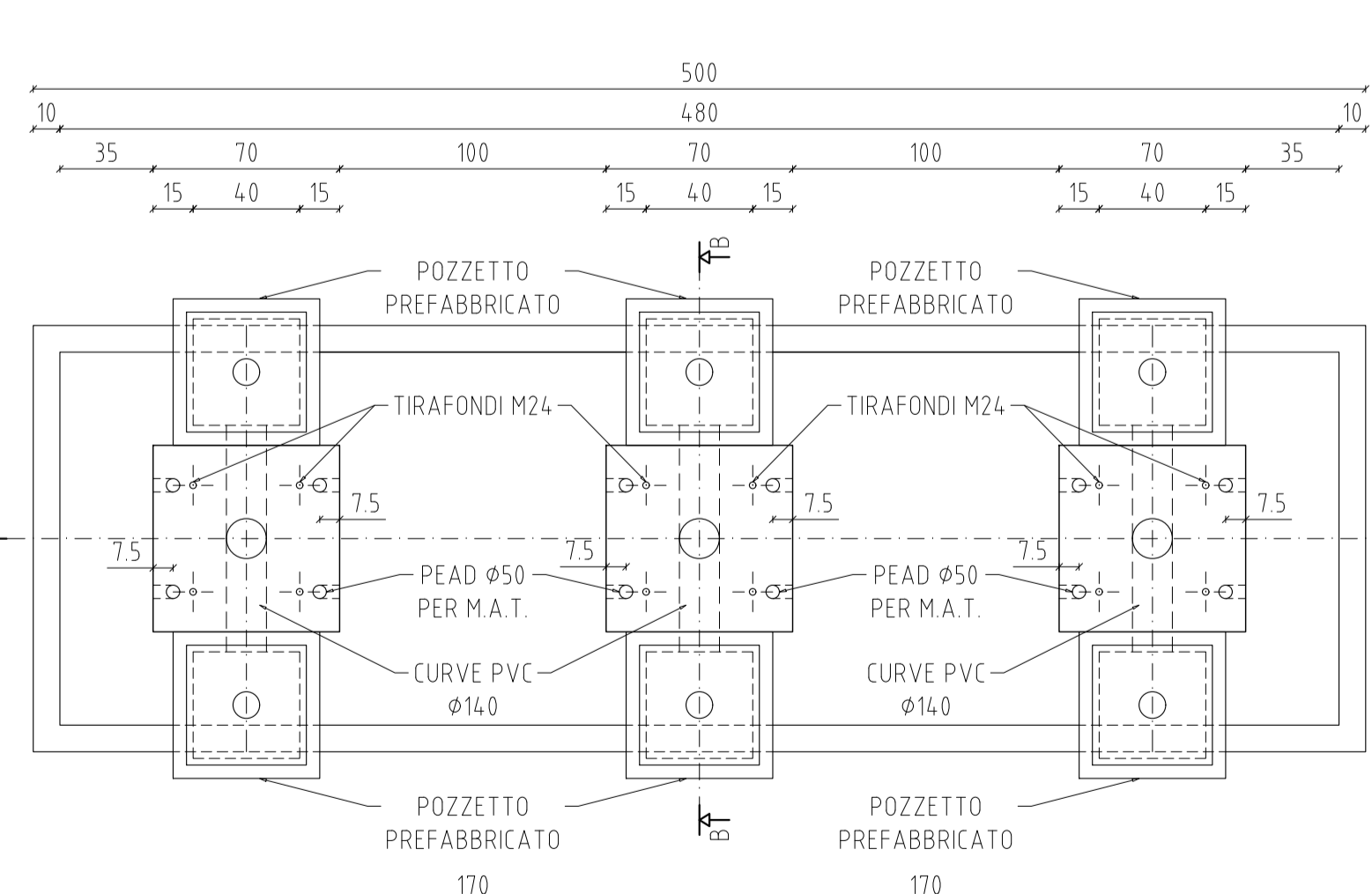
Pos.	N.	Diam. mm	Lung. cm	Peso Unit. daN	PESO daN
1	1 x 8	Ø 12	85	0.888	6.0
2a	1 x 4	Ø 12	360	0.888	12.8
2b	1 x 4	Ø 12	181	0.888	6.4
2c	1 x 4	Ø 12	320	0.888	11.4
3a	1 x 4	Ø 12	181	0.888	6.4
3b	1 x 4	Ø 12	181	0.888	6.4
4	1 x 3	Ø 10	260	0.617	4.8
<b>TOTALE</b>					<b>47.8</b>

FONDAZIONE PORTALE SBARRE 2  
(Scala 1:25)



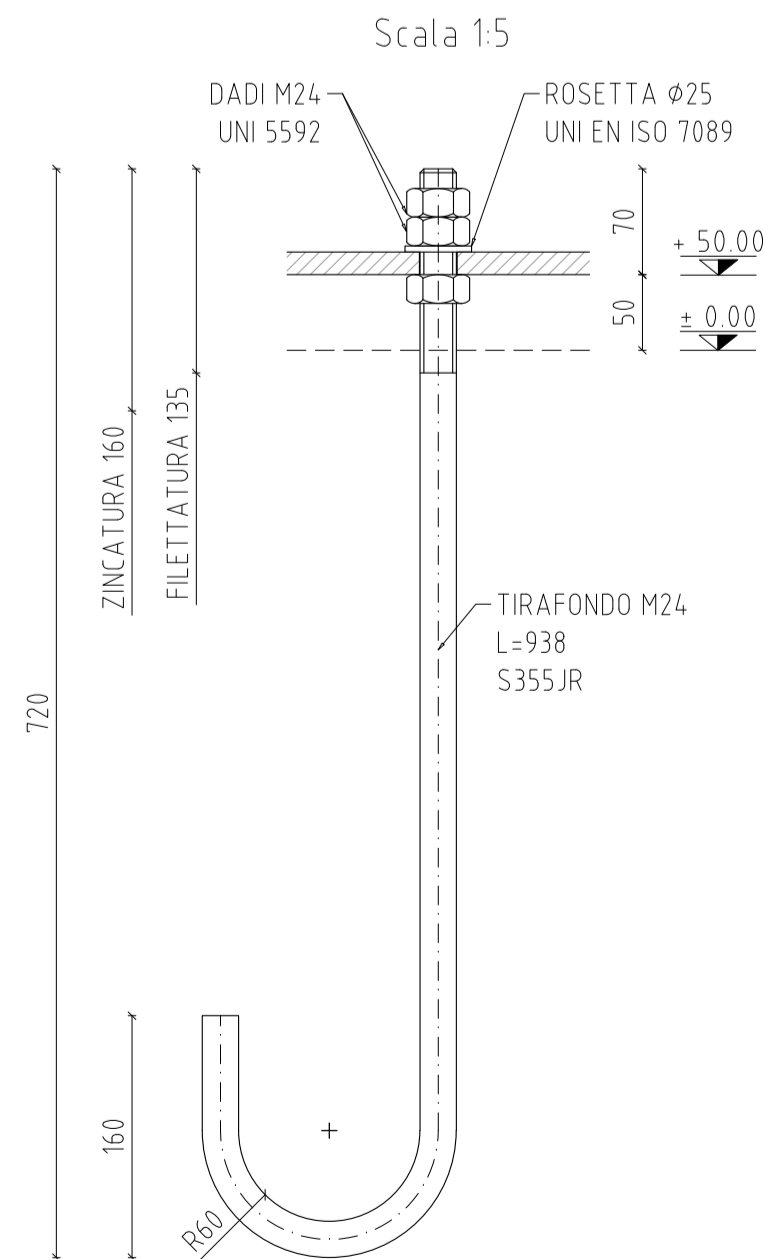
Pos.	N.	Diam. mm	Lung. cm	Peso Unit. daN	PESO daN
1	1 x 8	Ø 12	85	0.888	6.0
2a	1 x 4	Ø 12	360	0.888	12.8
2b	1 x 4	Ø 12	181	0.888	6.4
2c	1 x 4	Ø 12	320	0.888	11.4
3a	1 x 4	Ø 12	181	0.888	6.4
3b	1 x 4	Ø 12	181	0.888	6.4
4	1 x 3	Ø 10	260	0.617	4.8
<b>TOTALE</b>					<b>47.8</b>

FONDAZIONE SEZIONATORE DI LINEA  
(Scala 1:25)



Pos.	N.	Diam. mm	Lung. cm	Peso Unit. daN	PESO daN
1	3 x 8	Ø 12	85	0.888	18.1
2a	1 x 6	Ø 12	491	0.888	26.2
2b	1 x 6	Ø 12	531	0.888	28.3
3	1 x 20	Ø 12	320	0.888	56.8
4	3 x 3	Ø 10	260	0.617	14.4
<b>TOTALE</b>					<b>143.8</b>

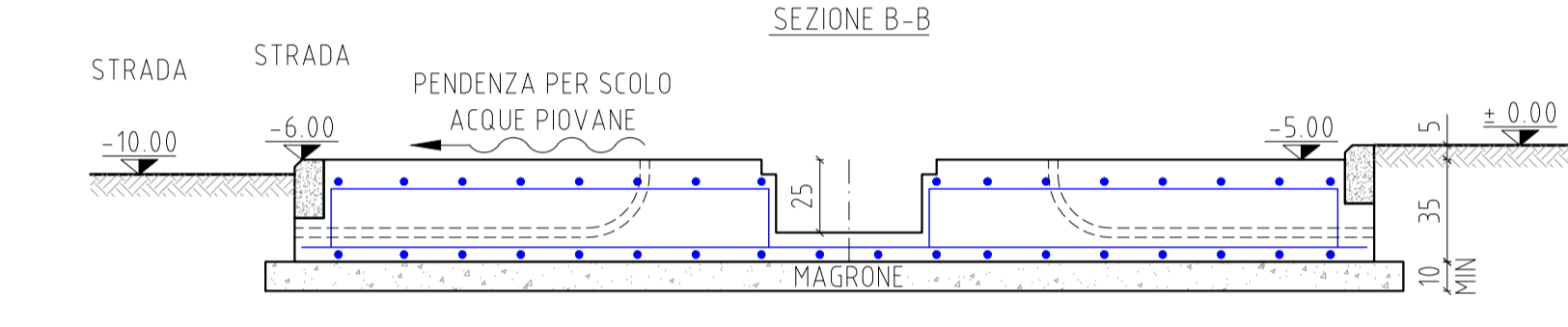
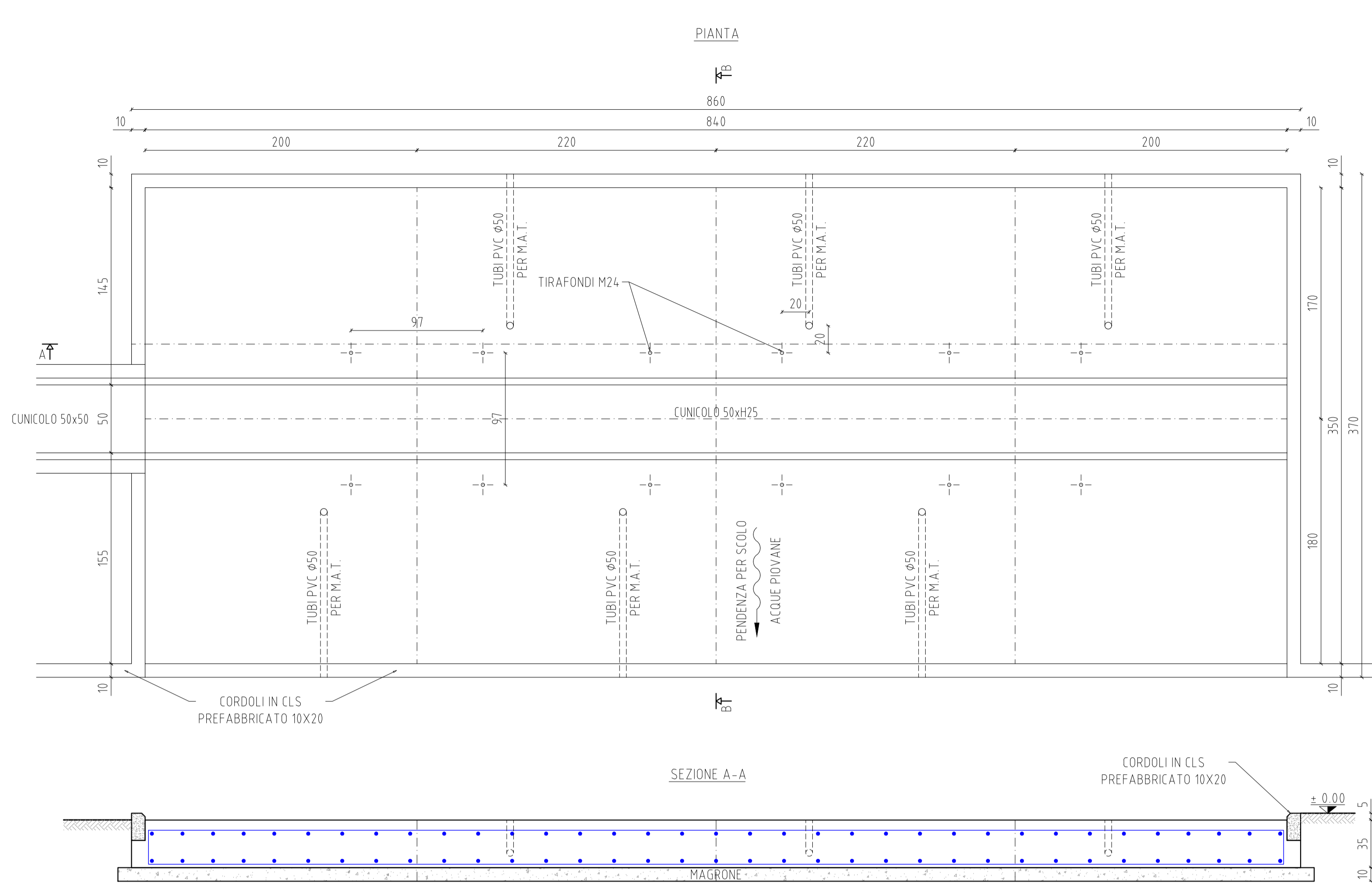
TIRAFONDI M24  
dimensioni in mm  
Scala 1:5



NOTE GENERALI

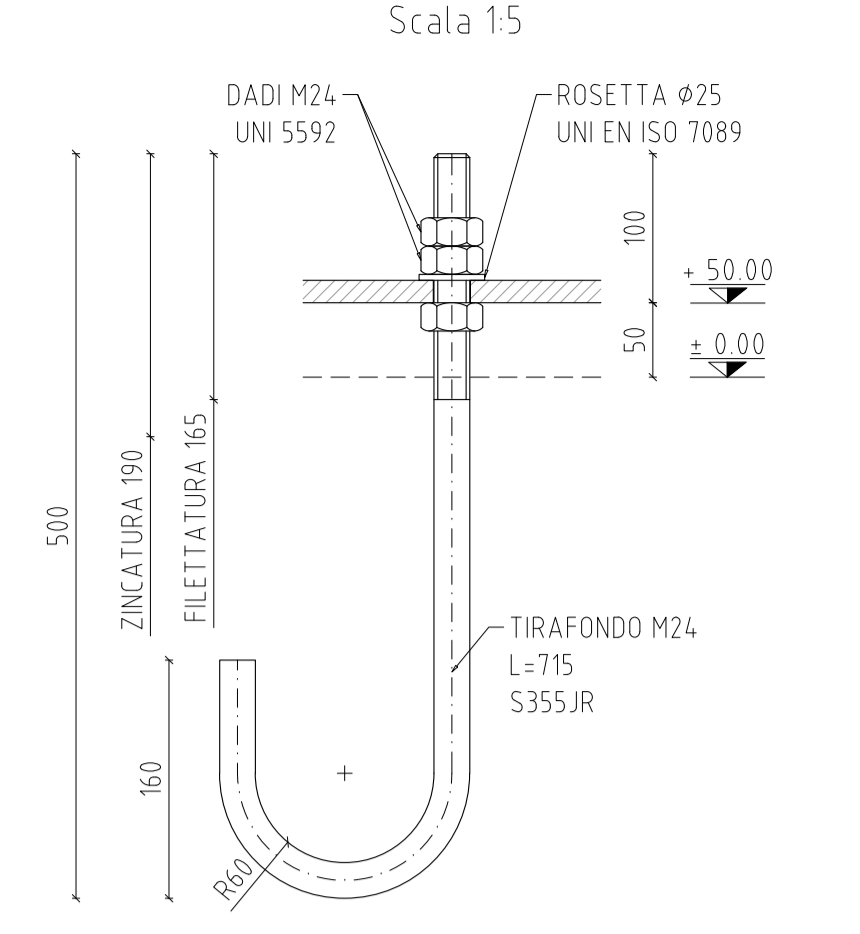
- TUTTE LE DIMENSIONI SONO IN ESISTENTE ECCEPTE DOVE INDICATO
- QUOTA +0.00 COINCIDENTE CON SOTTOPIASTRA SOSTEGNO APPARECCHIATURE
- FERRO D'ARMATURA B500C (ex FeB 43K)
- CALCESTRUZZO STRUTTURALE C 25/30 - R<sub>ik</sub> 30 (cubic) - XC2 - S4 - CI 0.20
- CALCESTRUZZO DI SOTTOFONDAZIONE (magrone) C 12/15 - R<sub>ik</sub> 15 (cubic) - X0 - S4 - CI 0.10
- COPRIFERRO 4,5 cm
- TIRAFONDI S 355 JR
- PVC serie 303/2 (pesante) UNI T443/85
- TUBAZIONI IN PEAD FLESSIBILE DOPPIA PARETE EN 50886-2-4 CEI 23-46
- COPERTURA POZZETTI CAVE TERRIA IN PFRV CARRABILE PORTATA 5000 daN

FONDAZIONE INTERRUTTORE  
(Scala 1:25)

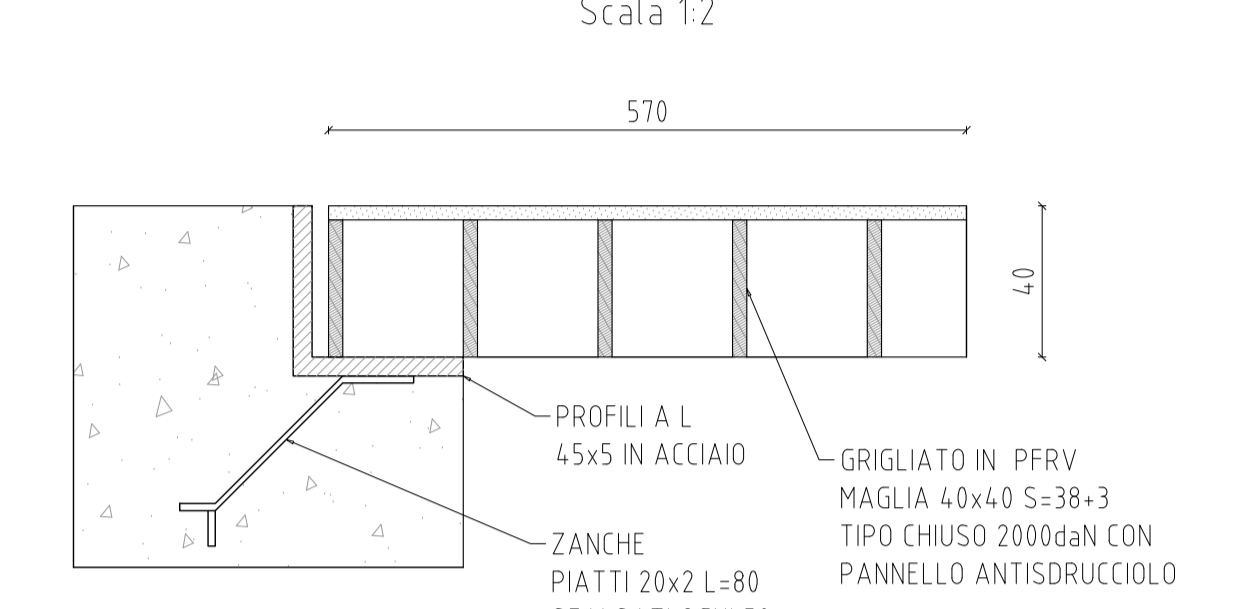


Pos.	N.	Diam. mm	Lung. cm	Peso Unit. daN	PESO daN
1	1 x 18	Ø 12	911	0.888	145.6
2	1 x 16	Ø 12	861	0.888	122.1
3	1 x 35	Ø 12	226	0.888	70.2
4	1 x 2	Ø 12	831	0.888	14.8
5	1 x 35	Ø 12	216	0.888	67.1
6	1 x 35	Ø 12	361	0.888	112.2
7	2 x 17	Ø 12	80	0.888	24.2
<b>TOTALE</b>					<b>556.4</b>

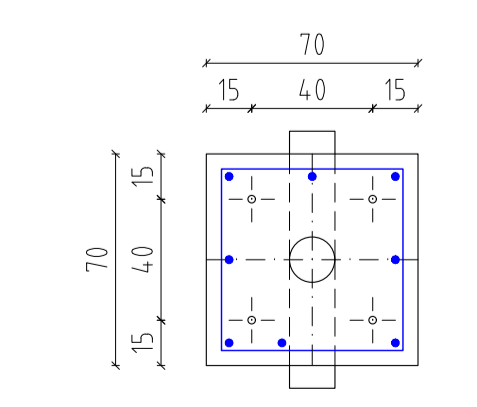
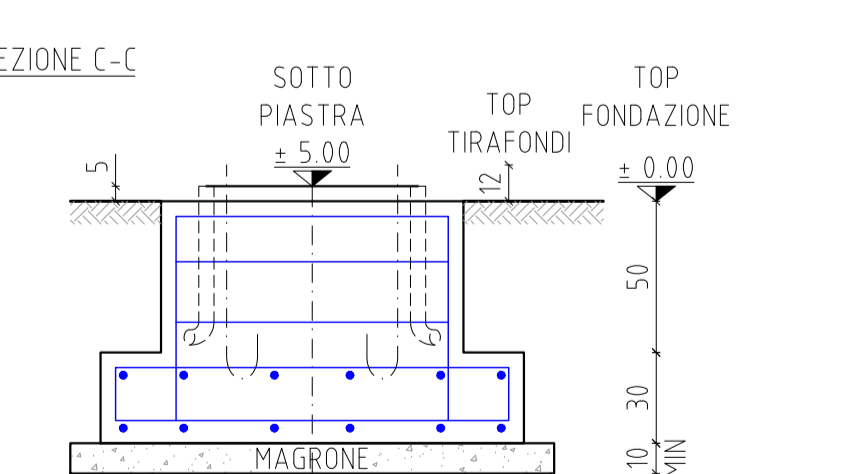
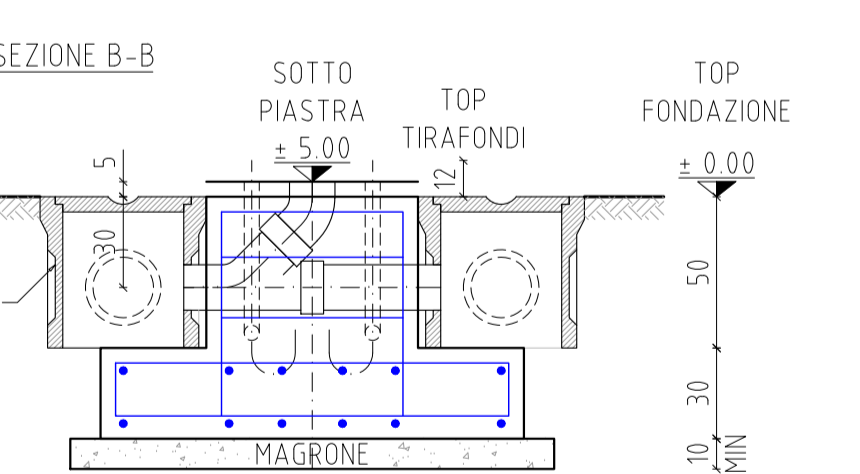
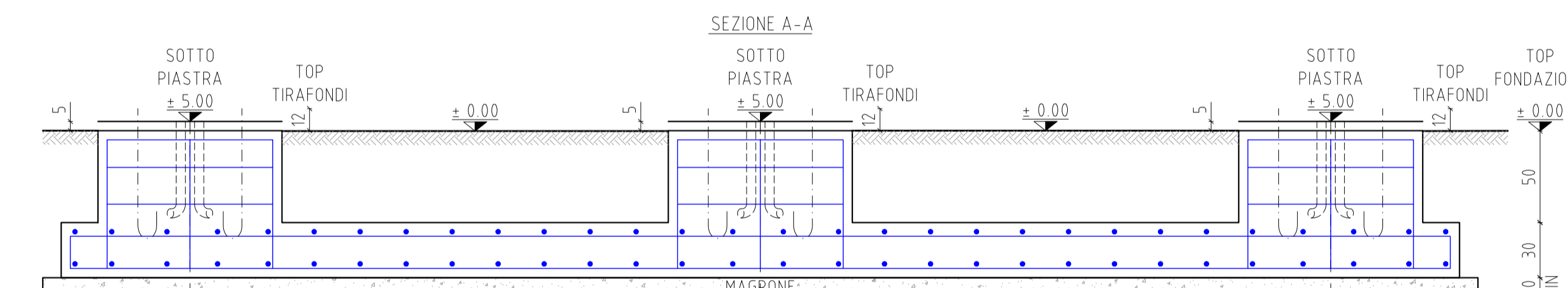
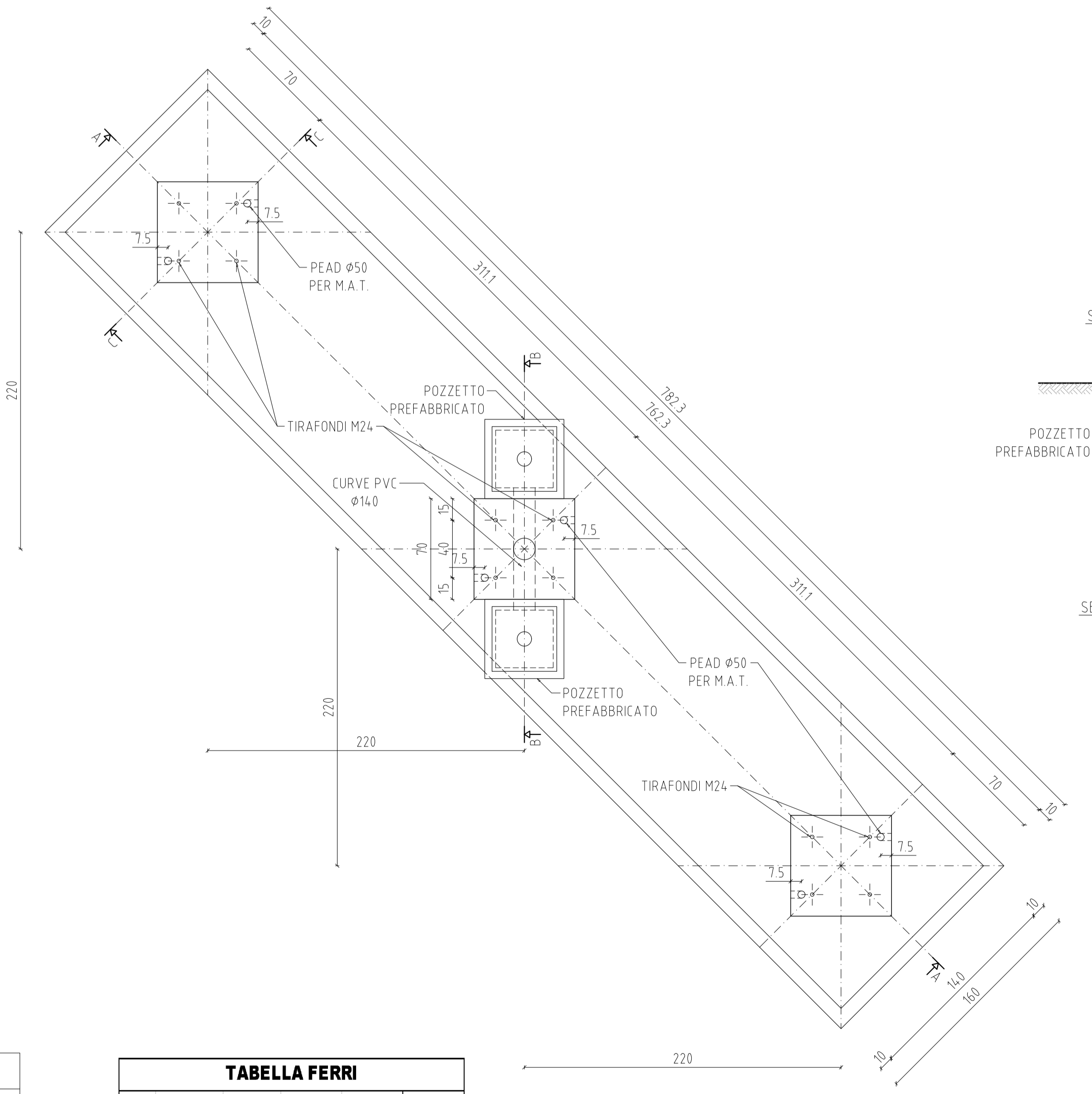
TIRAFONDI M24  
dimensioni in mm  
Scala 1:5



PARTICOLARE A  
dimensioni in mm  
Scala 1:2



FONDAZIONE SEZIONATORE DI SBARRA  
(Scala 1:25)



Pos.	N.	Diam. mm	Lung. cm	Peso Unit. daN	PESO daN
1	3 x 8	Ø 12	85	0.888	18.1
2a	1 x 6	Ø 12	773	0.888	41.2
2b	1 x 6	Ø 12	813	0.888	43.3
3	1 x 30	Ø 12	320	0.888	85.2
4	3 x 3	Ø 10	260	0.617	14.4
<b>TOTALE</b>					<b>202.2</b>

**REGIONE AUTONOMA DELLA SARDEGNA**  
**PROVINCIA DEL SUD SARDEGNA**  
Comuni di:

**IMPIANTI DI GENERAZIONE ELETTRICA DA FONTI RINNOVABILI**  
Codici Rintracciabilità Tema: 201900807 - 201900878 - 201901210

**PROGETTO OPERE DI RETE PIANO TECNICO DELLE OPERE**

**TIPICI FONDAZIONI APPARECCHIATURE AT SNE ARMUNGIA**

COMMITTENTE: **Queceq Renewables, Itd**  
Via S.21, 1110 Great West Road TW80GP London (UK)  
Company number: 111780524  
  
 eonenergy  
 Ecomenergy Project 2  
 via Alessandro Manzoni 30, 20121, Milano (MI)

PROGETTAZIONE: **Ing. Marco A. L. Murru**  
Via Pietro Nenni, 11 09042 Monserrato (CA) tel+39(0)705740021  
  
**GRUPPO DI LAVORO**  
 Ing. Marco A. L. Murru: Coordinamento e progetto impianti elettrici  
 Ing. Mauro Murru: progetto impianti elettrici  
 Gnd: Nicola Demurtas: parte Geologica e idrogeologica  
 Ing. Valentina Pisu: parte Ambientale

Rev.	n. Documento	Scala	Ridotti	Verificato	Approvato	Data
01	2392C/2020	1:25	A. Azzi	M. Murru	M. A. L. Murru	01/11/2023