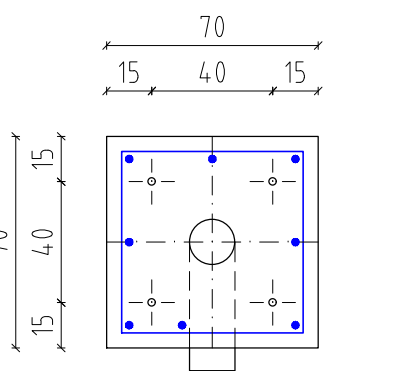
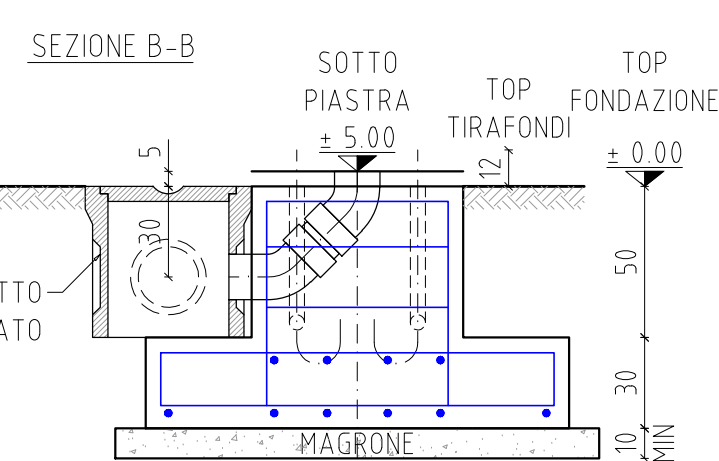
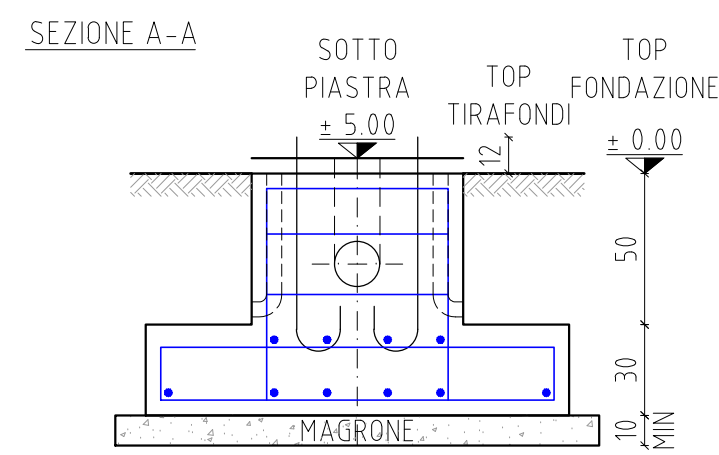
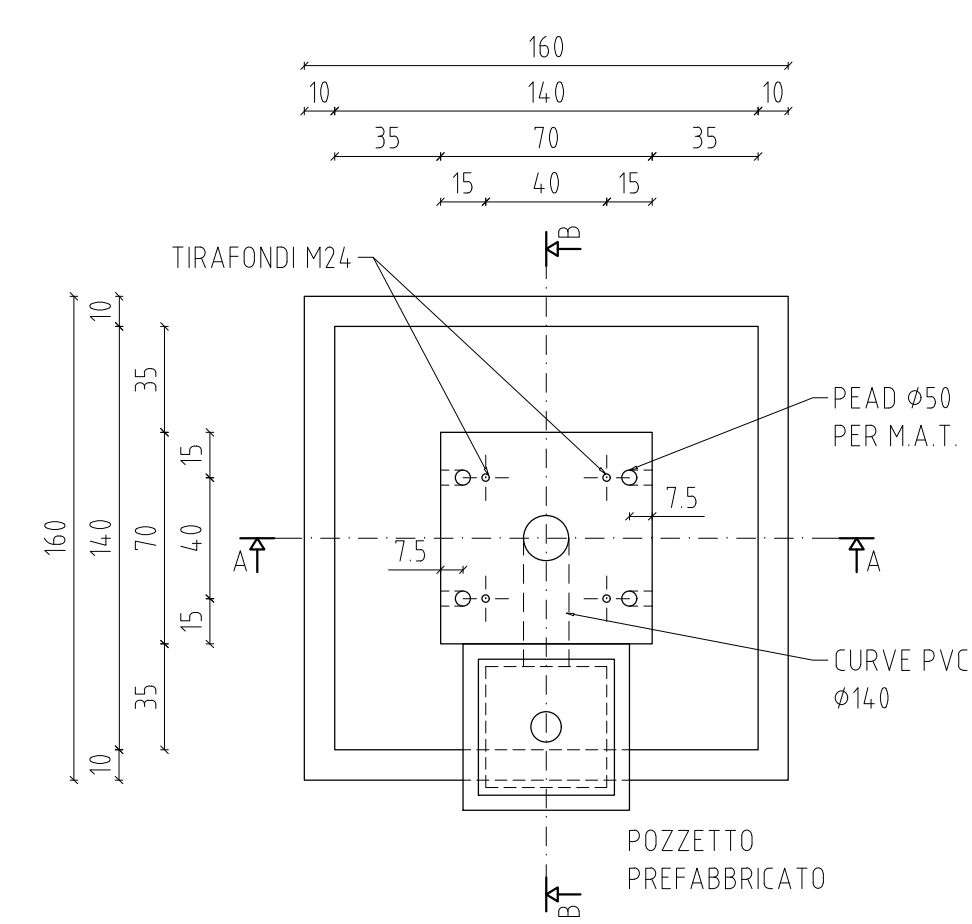
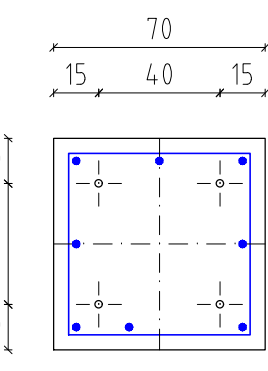
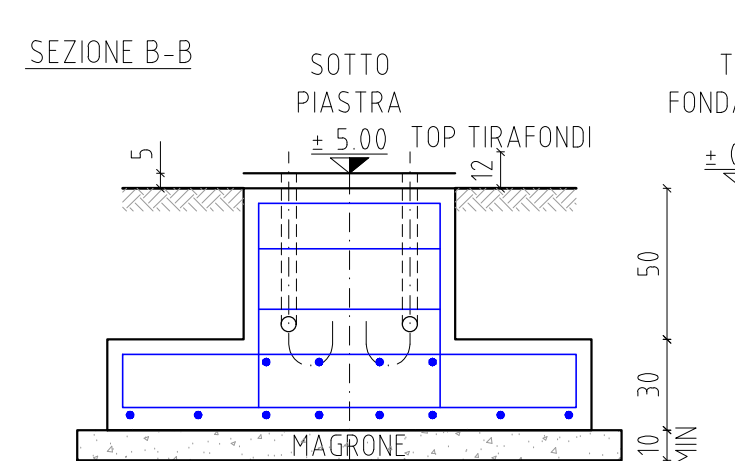
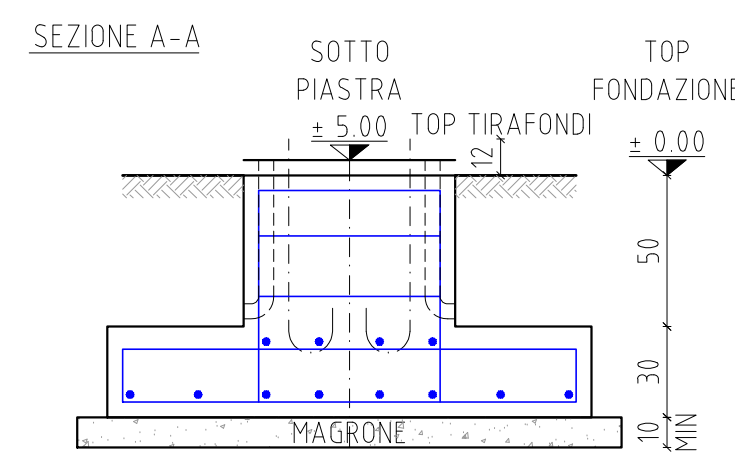
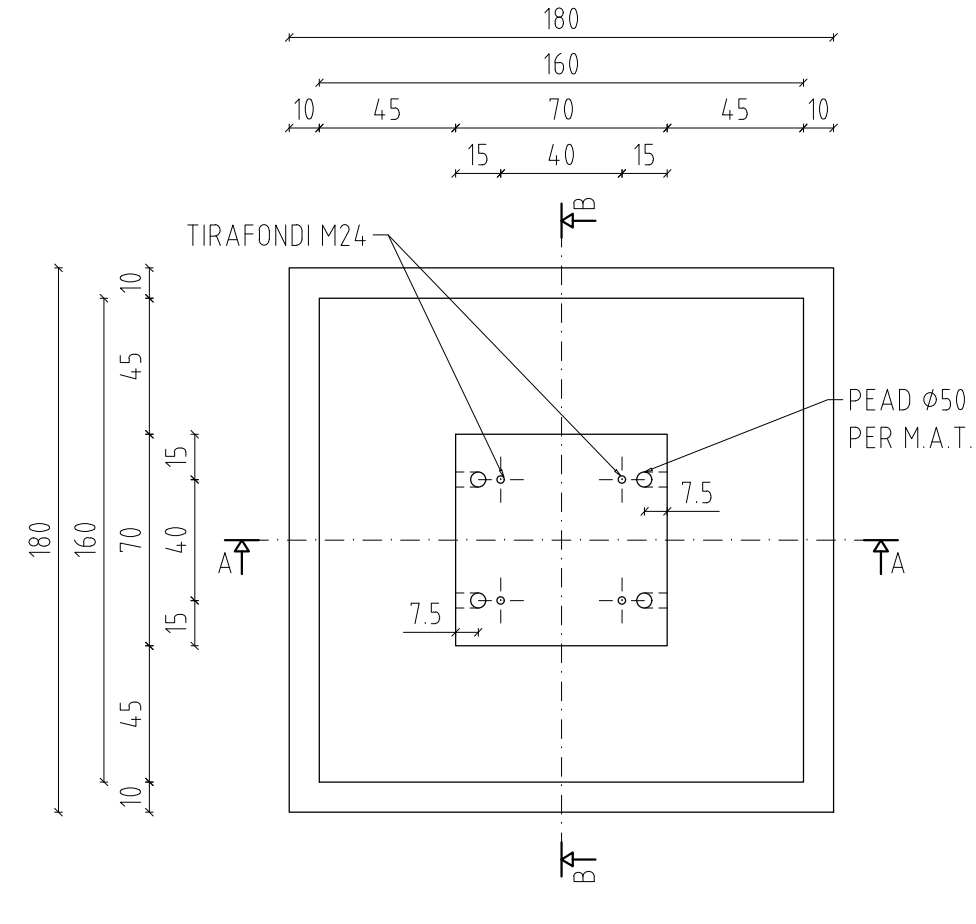


FONDAZIONE TV - TA - ISOLATORE
(Scala 1:25)



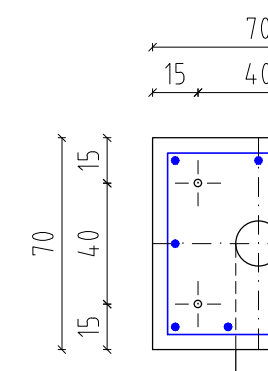
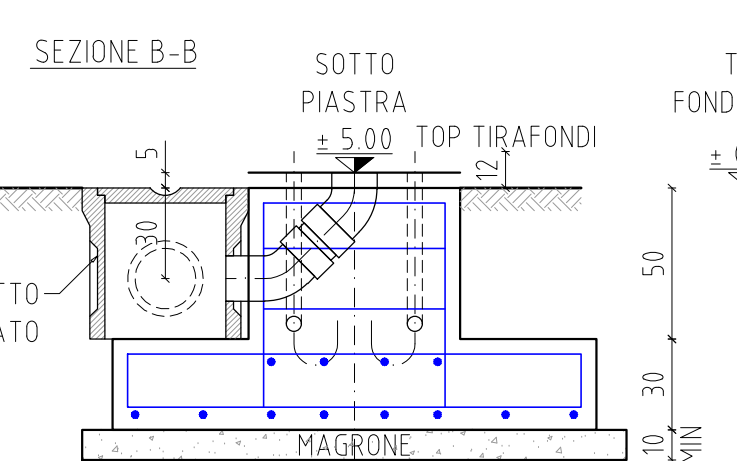
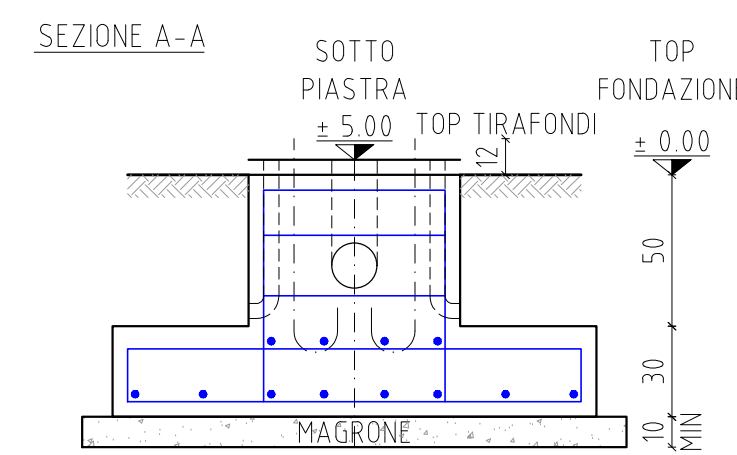
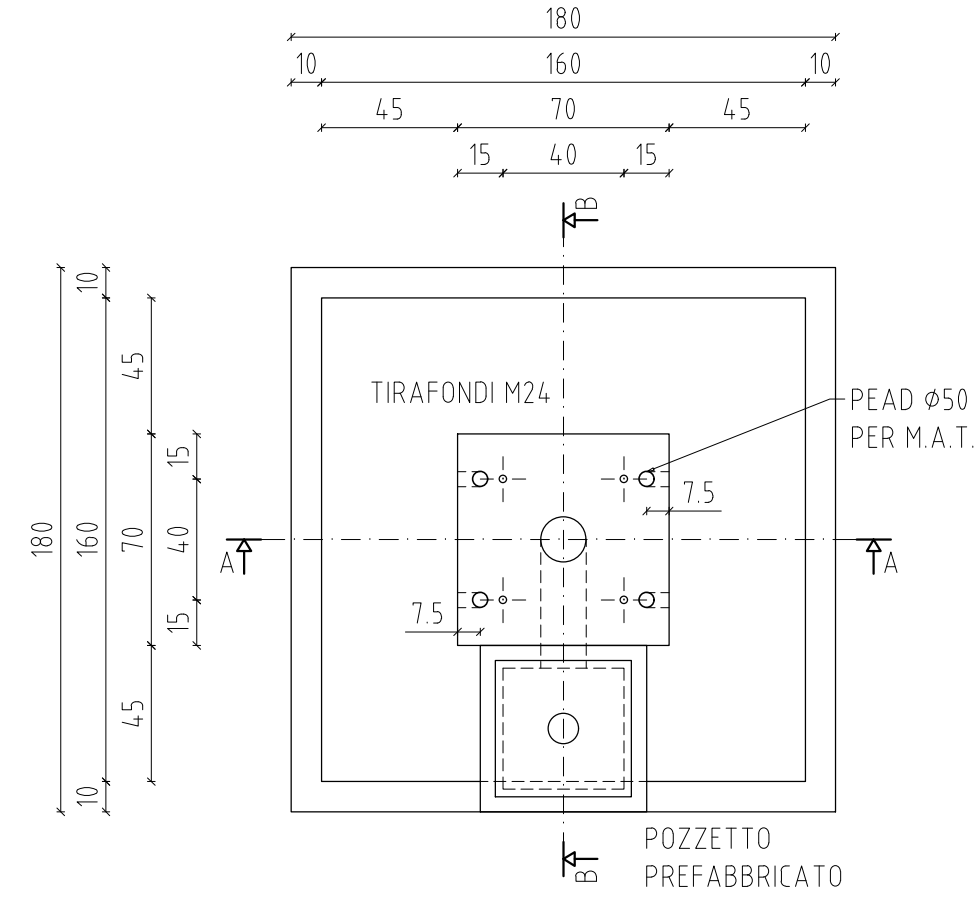
Pos.	N.	Diam. mm	Lung. cm	Peso Unit.	PESO daN
1	1 x 8	Ø 12	85	0.888	6.0
2a	1 x 4	Ø 12	320	0.888	11.4
2b	1 x 2	Ø 12	161	0.888	2.9
3a	1 x 4	Ø 12	320	0.888	11.4
3b	1 x 2	Ø 12	161	0.888	2.9
4	1 x 3	Ø 10	260	0.617	4.8
TOTALE					39.4

FONDAZIONE PORTALE SBARRE 1
(Scala 1:25)



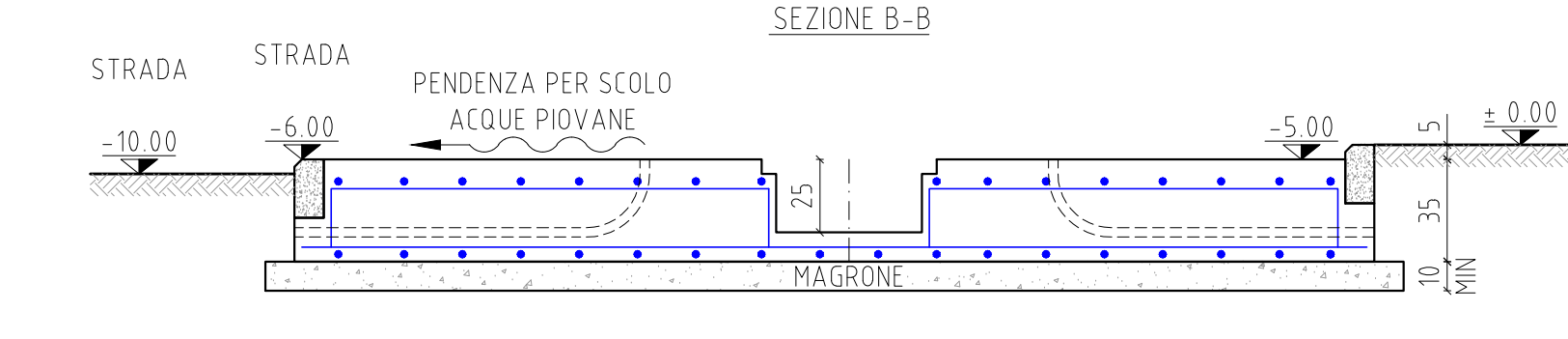
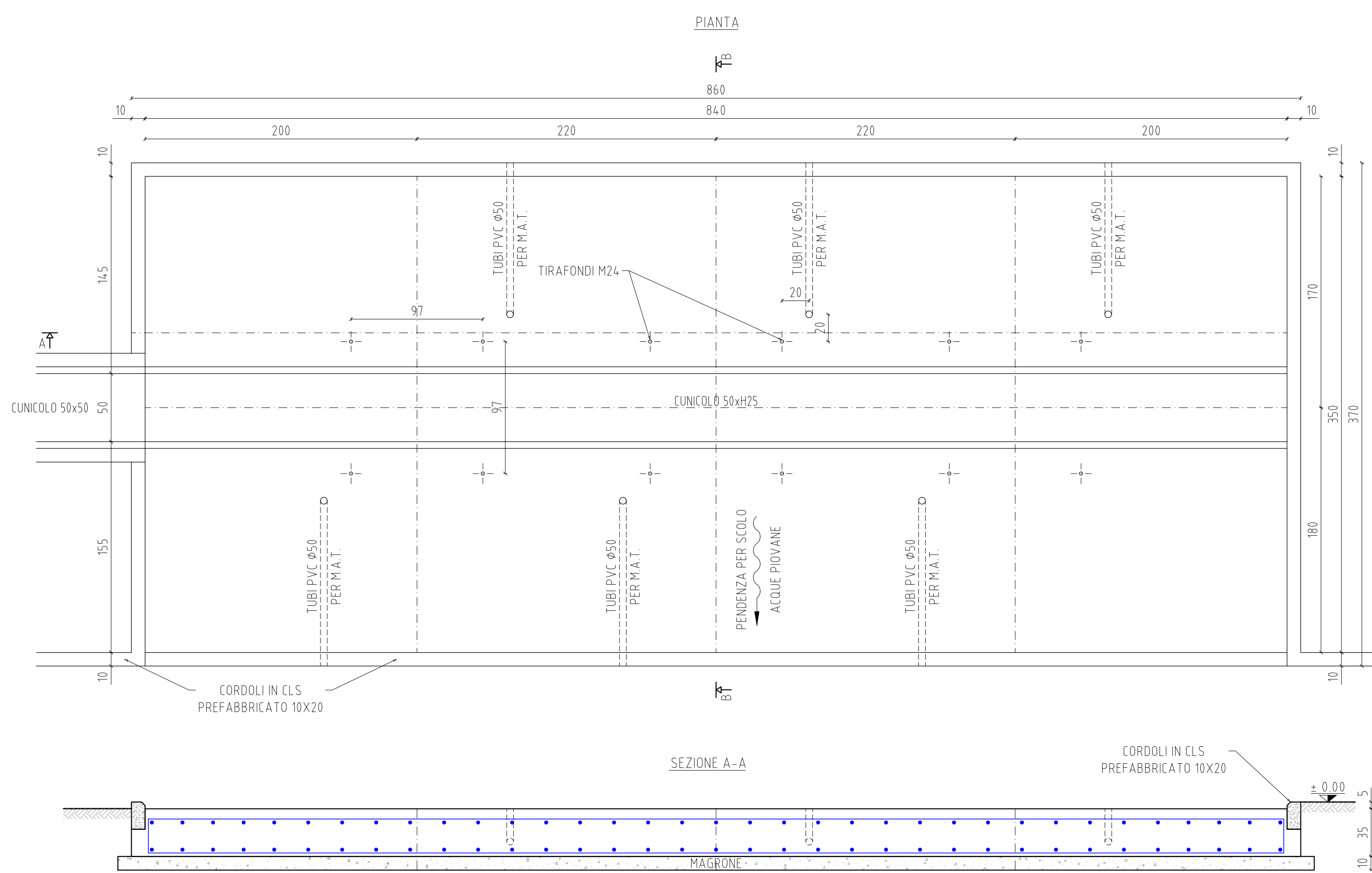
Pos.	N.	Diam. mm	Lung. cm	Peso Unit.	PESO daN
1	1 x 8	Ø 12	85	0.888	6.0
2a	1 x 4	Ø 12	360	0.888	12.8
2b	1 x 4	Ø 12	181	0.888	6.4
2c	1 x 4	Ø 12	320	0.888	11.4
3a	1 x 4	Ø 12	181	0.888	6.4
3b	1 x 4	Ø 12	181	0.888	6.4
4	1 x 2	Ø 10	260	0.617	4.8
TOTALE					47.8

FONDAZIONE PORTALE SBARRE 2
(Scala 1:25)



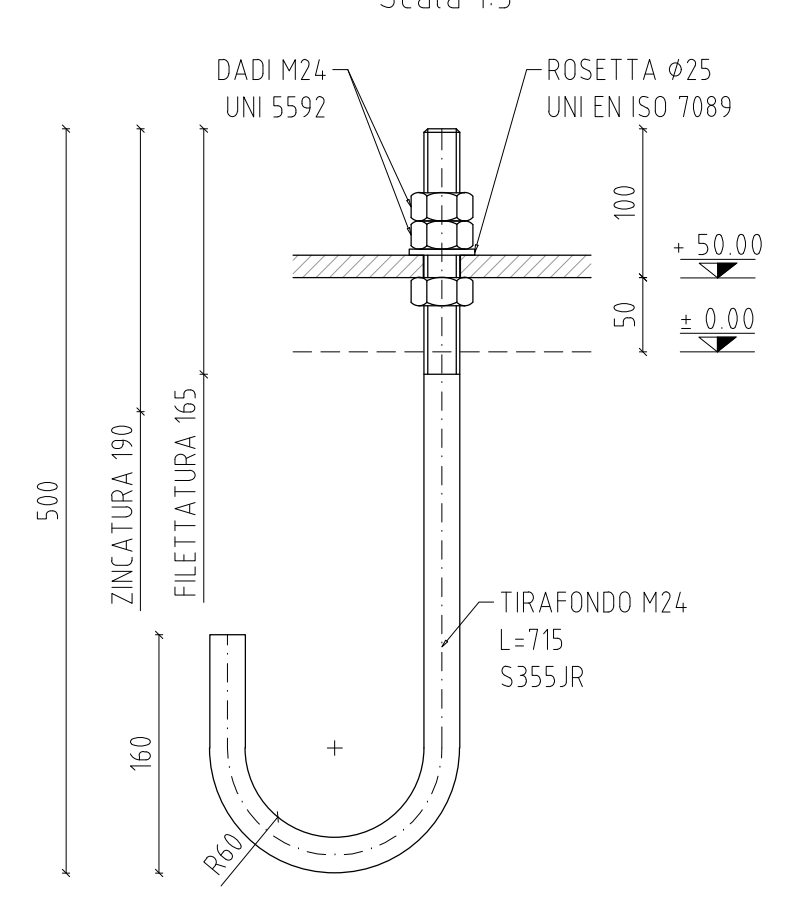
Pos.	N.	Diam. mm	Lung. cm	Peso Unit.	PESO daN
1	1 x 8	Ø 12	85	0.888	6.0
2a	1 x 4	Ø 12	360	0.888	12.8
2b	1 x 4	Ø 12	181	0.888	6.4
2c	1 x 4	Ø 12	320	0.888	11.4
3a	1 x 4	Ø 12	181	0.888	6.4
3b	1 x 4	Ø 12	181	0.888	6.4
4	1 x 2	Ø 10	260	0.617	4.8
TOTALE					47.8

FONDAZIONE INTERRUTTORE
(Scala 1:25)

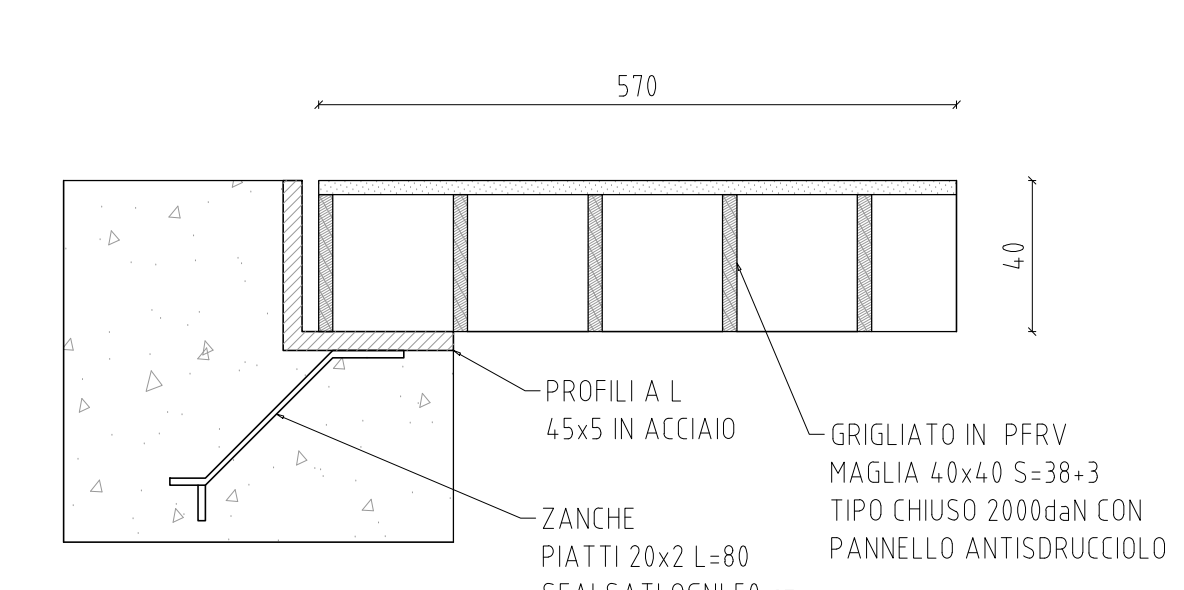


Pos.	N.	Diam. mm	Lung. cm	Peso Unit.	PESO daN
1	1 x 18	Ø 12	911	0.888	145.6
2	1 x 16	Ø 12	861	0.888	122.3
3	1 x 35	Ø 12	226	0.888	70.2
4	1 x 2	Ø 12	831	0.888	14.8
5	1 x 35	Ø 12	216	0.888	67.1
6	1 x 35	Ø 12	361	0.888	112.2
7	2 x 17	Ø 12	80	0.888	24.2
TOTALE					556.4

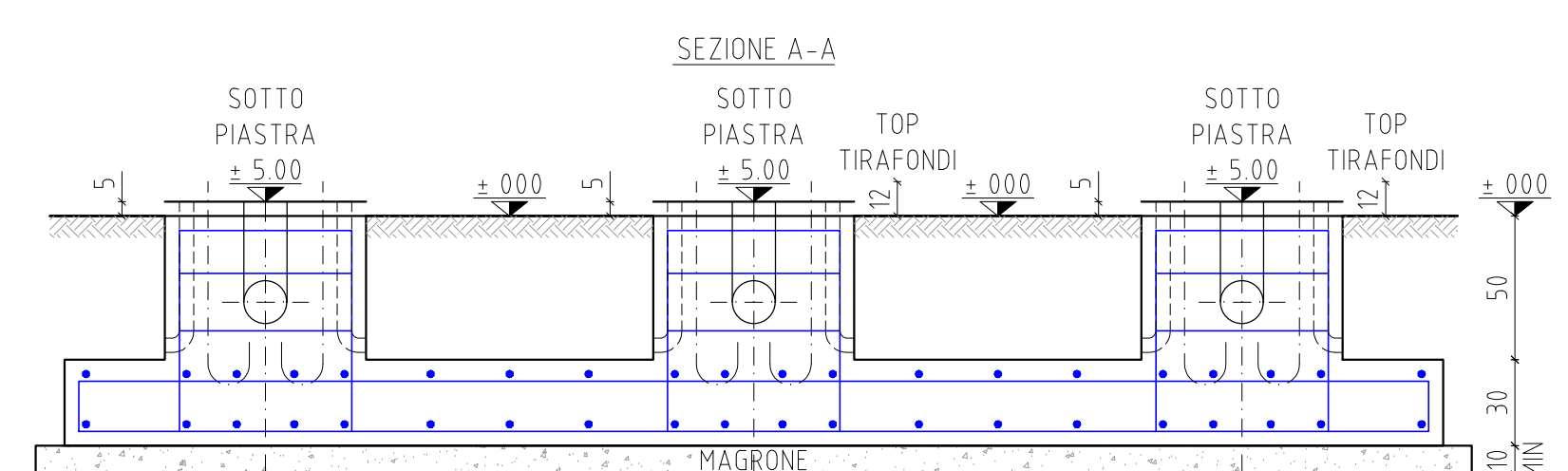
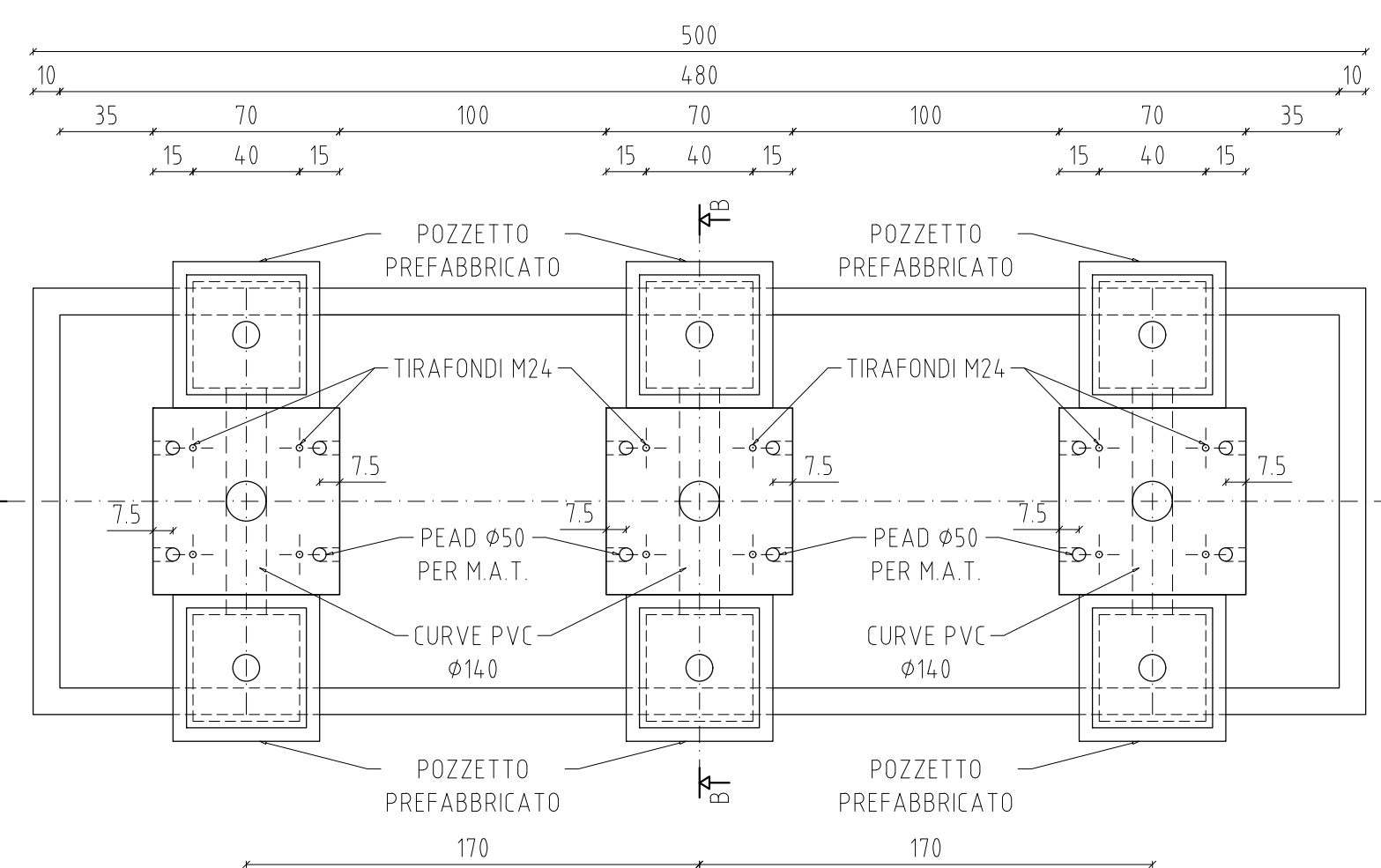
TIRAFONDI M24
dimensioni in mm
Scala 1:5



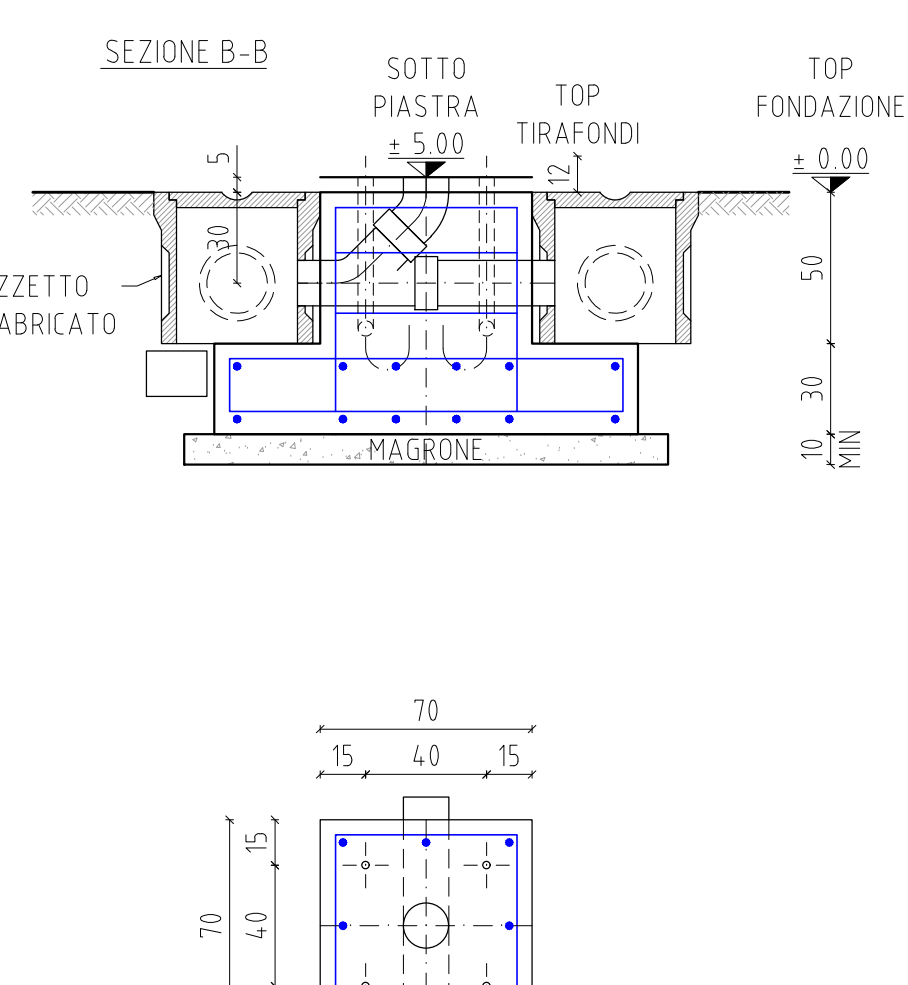
PARTICOLARE A
dimensioni in mm
Scala 1:2



FONDAZIONE SEZIONATORE DI LINEA
(Scala 1:25)

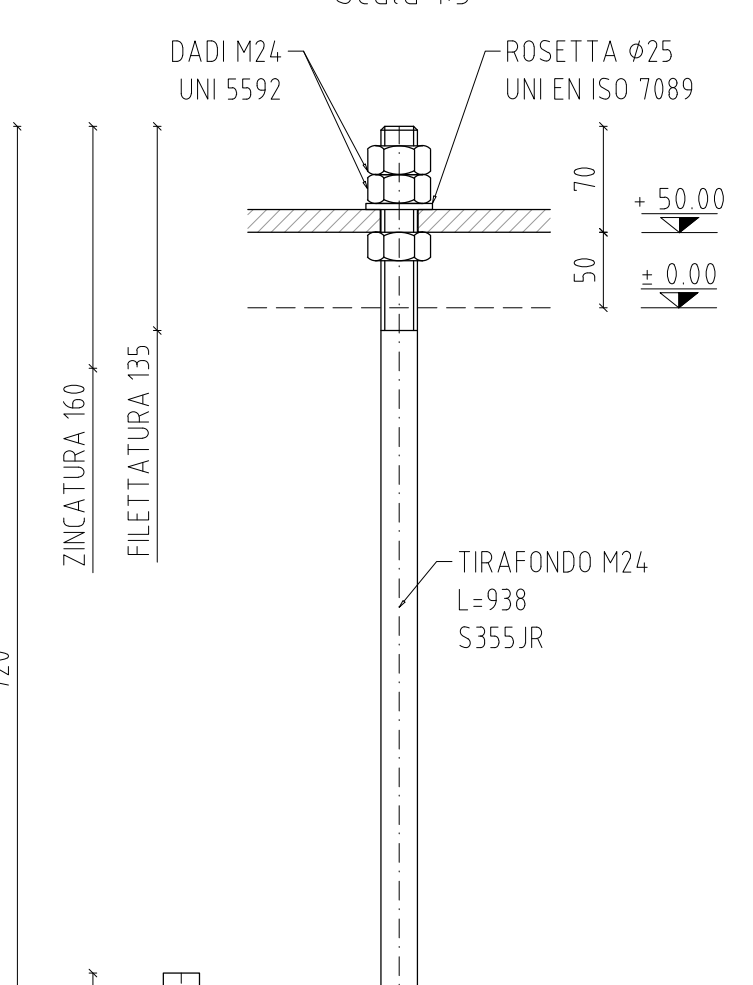


TIRAFONDI M24
dimensioni in mm
Scala 1:5



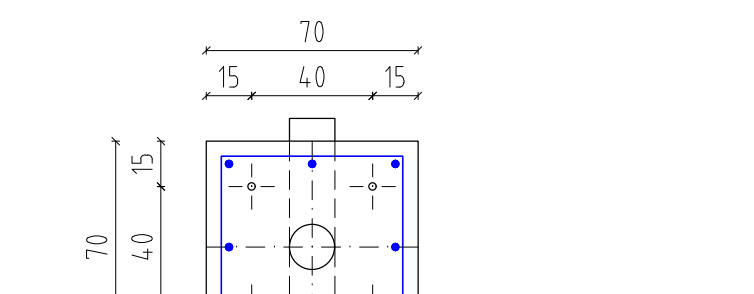
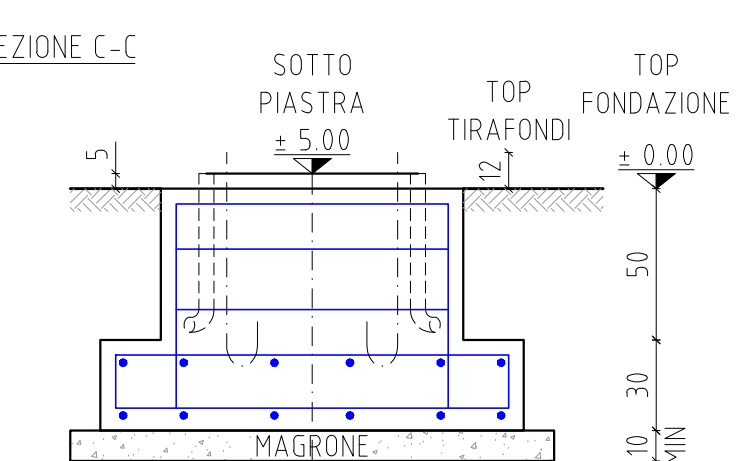
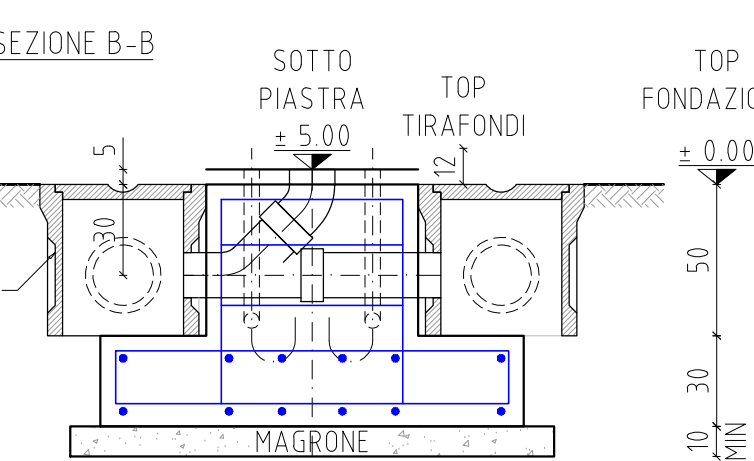
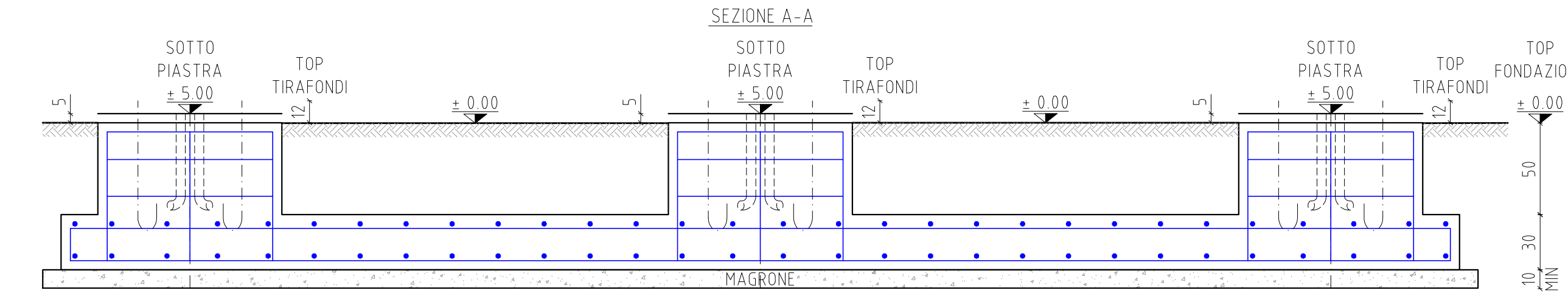
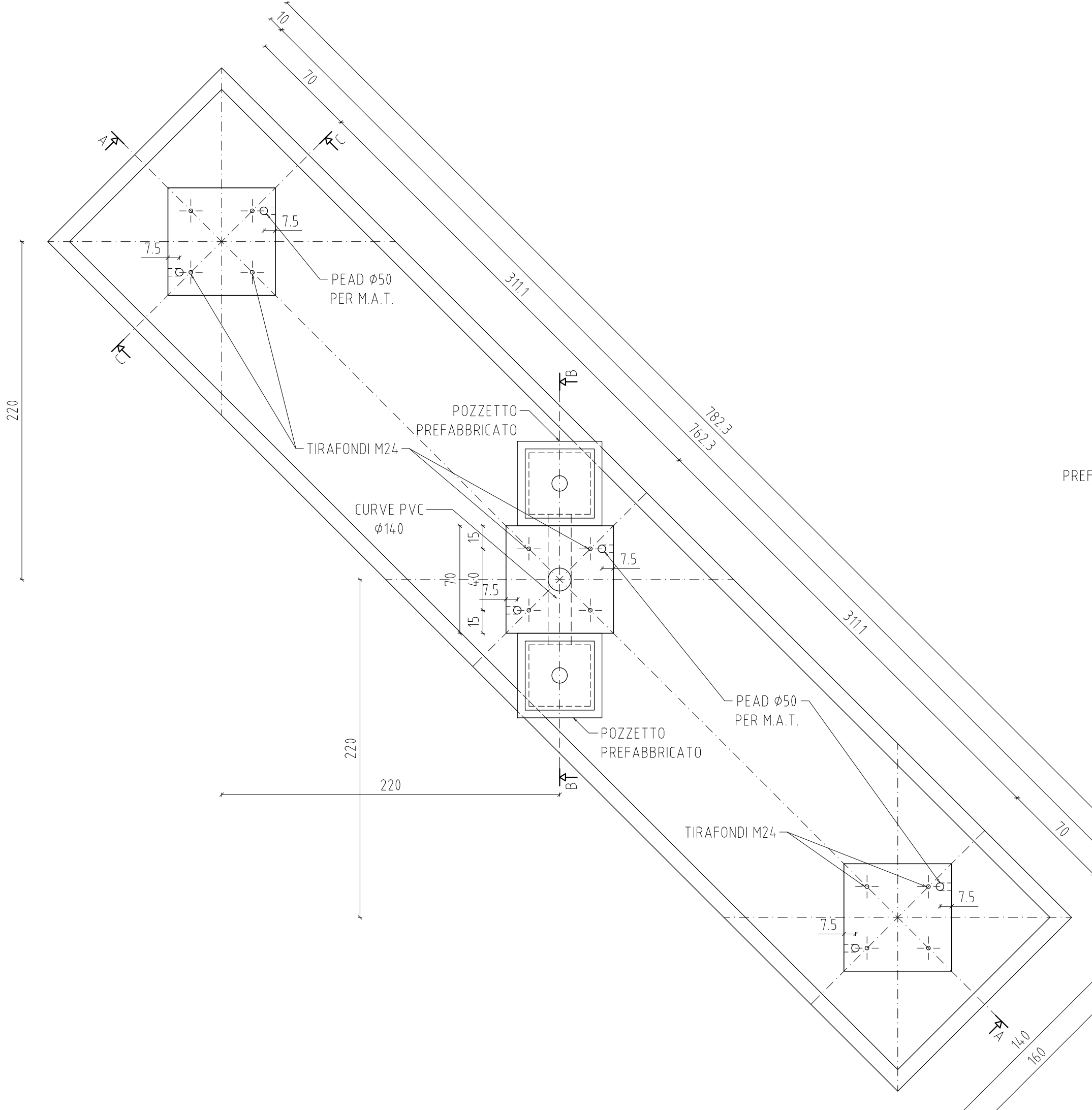
Pos.	N.	Diam. mm	Lung. cm	Peso Unit.	PESO daN
1	3 x 8	Ø 12	85	0.888	18.1
2a	1 x 6	Ø 12	491	0.888	26.2
2b	1 x 6	Ø 12	531	0.888	23.3
3	1 x 20	Ø 12	320	0.888	56.8
4	3 x 3	Ø 10	260	0.617	14.4
TOTALE					143.8

TIRAFONDI M24
dimensioni in mm
Scala 1:5



Pos.	N.	Diam. mm	Lung. cm	Peso Unit.	PESO daN
1	3 x 8	Ø 12	85	0.888	18.1
2a	1 x 6	Ø 12	773	0.888	41.2
2b	1 x 6	Ø 12	813	0.888	43.3
3	1 x 30	Ø 12	320	0.888	85.2
4	3 x 3	Ø 10	260	0.617	14.4
TOTALE					202.2

FONDAZIONE SEZIONATORE DI SBARRA
(Scala 1:25)



NOTE GENERALI
- TUTTE LE DIMENSIONI SONO IN ESISTENZE ECCEPTE DOVE INDICATO
- QUOTA ±0.00 COINCIDENTE CON SOTTOPIASTRA SOSTEGNI APPARECCHIATURE
- FERRO D'ARMATURA B500C (ex FeB 43K)
- CALCESTRUZZO STRUTTURALE C 25/30 - Rik 30 (cubic) - XC2 - S4 - CI 0.20
- CALCESTRUZZO DI SOTTOPONDAZIONE (magrone) C 12/15 - Rik 15 (cubic) - X0 - S4 - CI 0.10
- COPRIFERRO 4,5 cm
- TIRAFONDI 355 JR
- PVC serie 303/2 (pesante) UNI T443/85
- TUBAZIONI IN PEAD FLESSIBILE DOPPIA PARETE EN 50886-2-4 CEI 23-46
- COPERTURA POZZETTI CAVE TERRIA IN PFRV CARRABILE PORTATA 5000 daN

REGIONE AUTONOMA DELLA SARDEGNA
PROVINCIA DEL SUD SARDEGNA
Comuni di:

IMPIANTI DI GENERAZIONE ELETTRICA DA FONTI RINNOVABILI
Codici Rintracciabilità Tema: 201900807 - 201900878 - 201901210

PROGETTO OPERE DI RETE PIANO TECNICO DELLE OPERE

TIPICI FONDAZIONI APPARECCHIATURE AT E MT SNE BURCEI

COMMITTENTE: **Quequeq Renewables, Itd**
Via S.21, 1110 Great West Road TW80GP London (UK)
Company number: 111780524

Econergy Project 2
Via Alessandro Manzoni 30, 20121, Milano (MI)

PROGETTAZIONE:

Ing. Marco A. L. Murru
Via Pietro Nenni, 11 09442 Monserrato (CA)
tel+39(0)705740021

GRUPPO DI LAVORO

Ing. Mauro Murru: progetto impianti elettrici

Gndi Nicola Demurtas: parte Geologica e idrogeologica

Ing. Valentina Pisu: parte Ambientale

Rev.	n. Documento	Fig/Pag	Scala	Redatto	Verificato	Approvato	Data
01	25302-20386	1/1	1:25 - 1:5 - 1:2	M. Pisu	M. Murru	M. A. L. Murru	01/11/2023