



COMUNE DI
SERRI

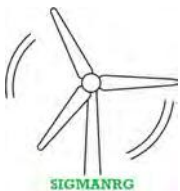


PROVINCIA DEL
SUD SARDEGNA



REGIONE AUTONOMA
DELLA SARDEGNA

PROGETTO PARCO EOLICO " SERRI "
13 WTG - POTENZA 93,60 MW
COMUNE DI SERRI (SU)



SIGMANRG S.R.L.
Antonino Apreda

Proponente:
SIGMANRG SRL
Via Pietro Cossa n 5
20122 Milano (MI)

Antonino Apreda

Progettazione:
LEONARDO ENGINEERING SRL
Viale Lamberti snc
81100 Caserta

Ing Giovanni Savarese



Elaborato		SEPDPC14		REPORT VIABILITA'		
Cod pratica	Data	Consegna	Formato	Scala	Livello progettuale	
SE_01	19/03/2024		A4	-	Progetto definitivo	

REVISIONI	Rev	Data	Descrizione	Elaborato	Controllato	Approvato
	01	Aprile 2024	Prima emissione	G.Donnarumma	V.Vanacore	M.Afeltra

Il presente elaborato è di proprietà della Leonardo Engineering srl

E' vietata la comunicazione a terzi e/o la riproduzione senza il preventivo permesso scritto della suddetta società La società tutela i propri diritti a rigore di Legge

Class I

Confidentiality Note: **Recipient's discretion**

Customer: ABN Wind Energy

Transport Road Survey Report

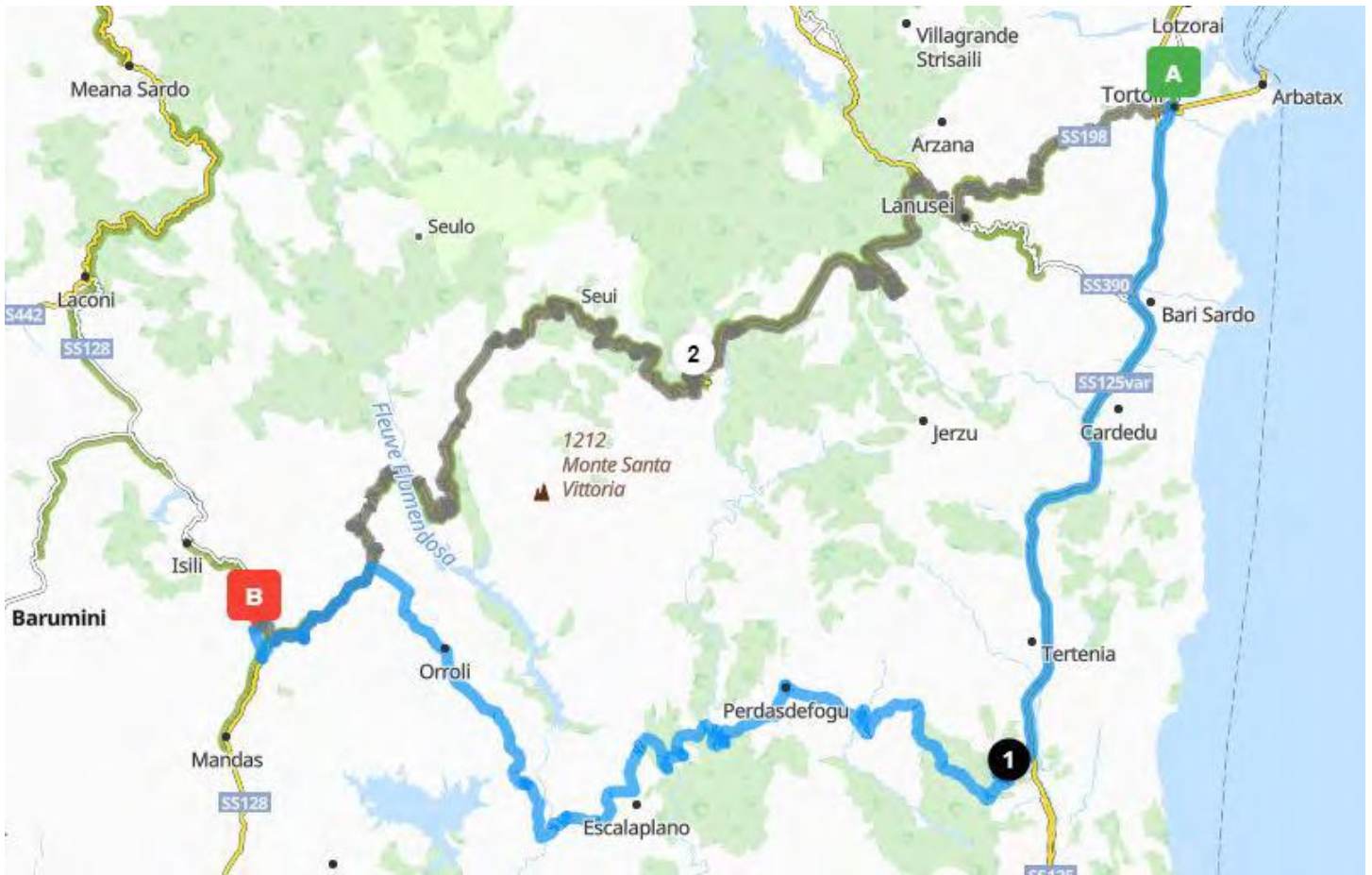
Project: Serri (SU)



General Route Description

External Route

For the transport of the Wind Turbine, port of Arbatax has been considered as pick-up location.



Road Modifications

Observation 1

39°56'11.85"N - 9°41'47.84"E



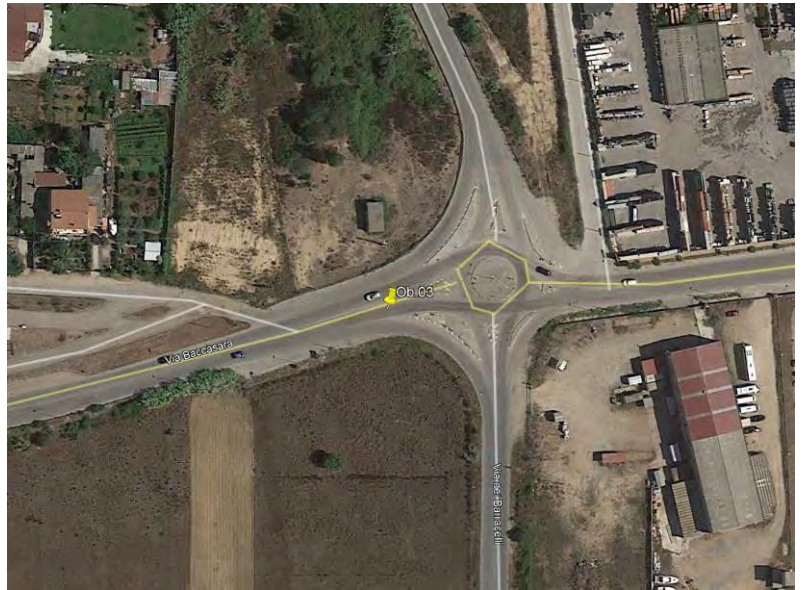
Observation 2

39°56'12.91"N - 9°41'44.63"E



Observation 3

39°55'56.35"N - 9°40'30.63"E



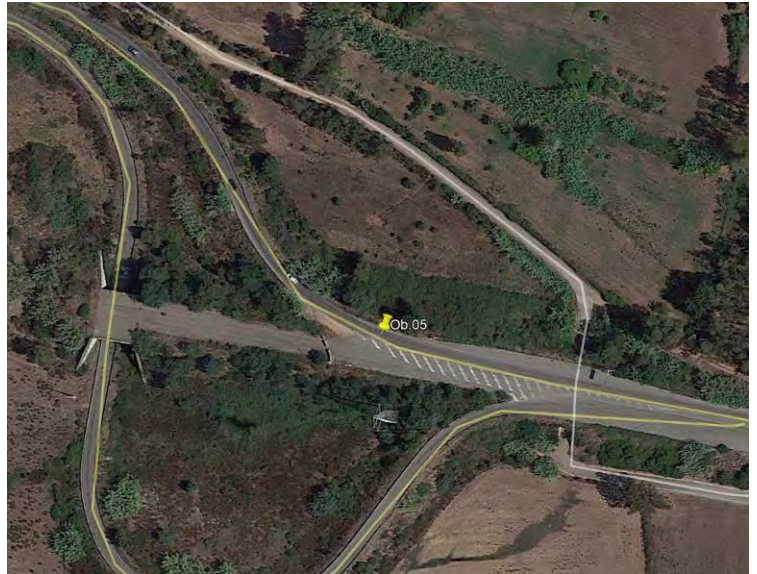
Observation 4

39°55'55.25"N - 09°40'15.50"E



Observation 5

39°56'07.49"N - 09°39'00.17"E



Observation 6

39°56'10.48"N - 9°38'51.48"E



Observation 7

39°56'07.78"N - 9°38'49.11"E



Observation 8

39°51'57.71"N - 9°34'47.82"E



Observation 9

39°51'57.93"N - 9°38'46.61"E



Observation 10

39°51'58.10"N - 9°38'46.73"E



Observation 11

39°40'38.15"N - 9°34'41.09"E



Observation 12

39°40'36.84"N - 9°34'41.01"E



Observation 13

39°40'06.05"N - 9°34'36.89"E



Observation 14

39°38'45.17"N - 9°34'52.65"E



Observation 15

39°38'45.71"N - 9°34'51.43"E



Observation 16

39°40'15.22"N - 9°30'15.00"E



Observation 17

39°42'23.91"N - 9°30'23.50"E



Observation 18

39°41'21.54"N - 9°27'43.22E



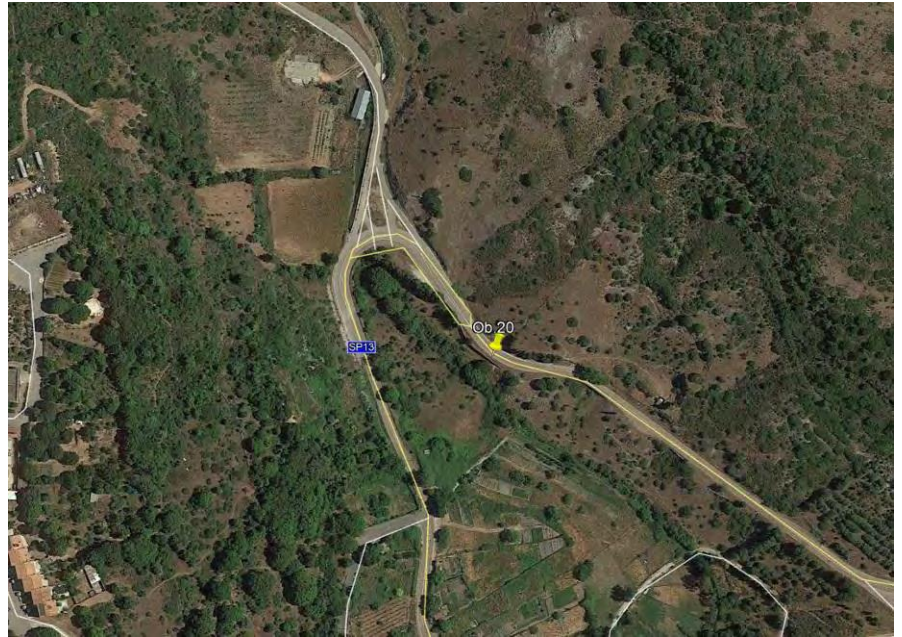
Observation 19

39°41'16.35"N - 9°27'11.95"E



Observation 20

39°41'12.44"N - 9°26'33.20"E



Observation 21

39°41'02.44"N - 9°26'31.86"E



Observation 22

39°40'58.89"N - 9°26'31.53"E



Observation 23

39°40'56.33"N - 9°26'29.72"E



Observation 24

39°40'55.82"N - 9°26'28.80"E



Observation 25

39°40'54.74"N - 9°26'26.47"E



Observation 26

39°40'53.78"N - 9°26'25.91"E



Observation 27

39°40'50.38"N - 9°26'26.14"E



Observation 28

39°40'46.47"N - 9°26'26.99"E



Observation 29

39°40'41.50"N - 9°26'26.69"E



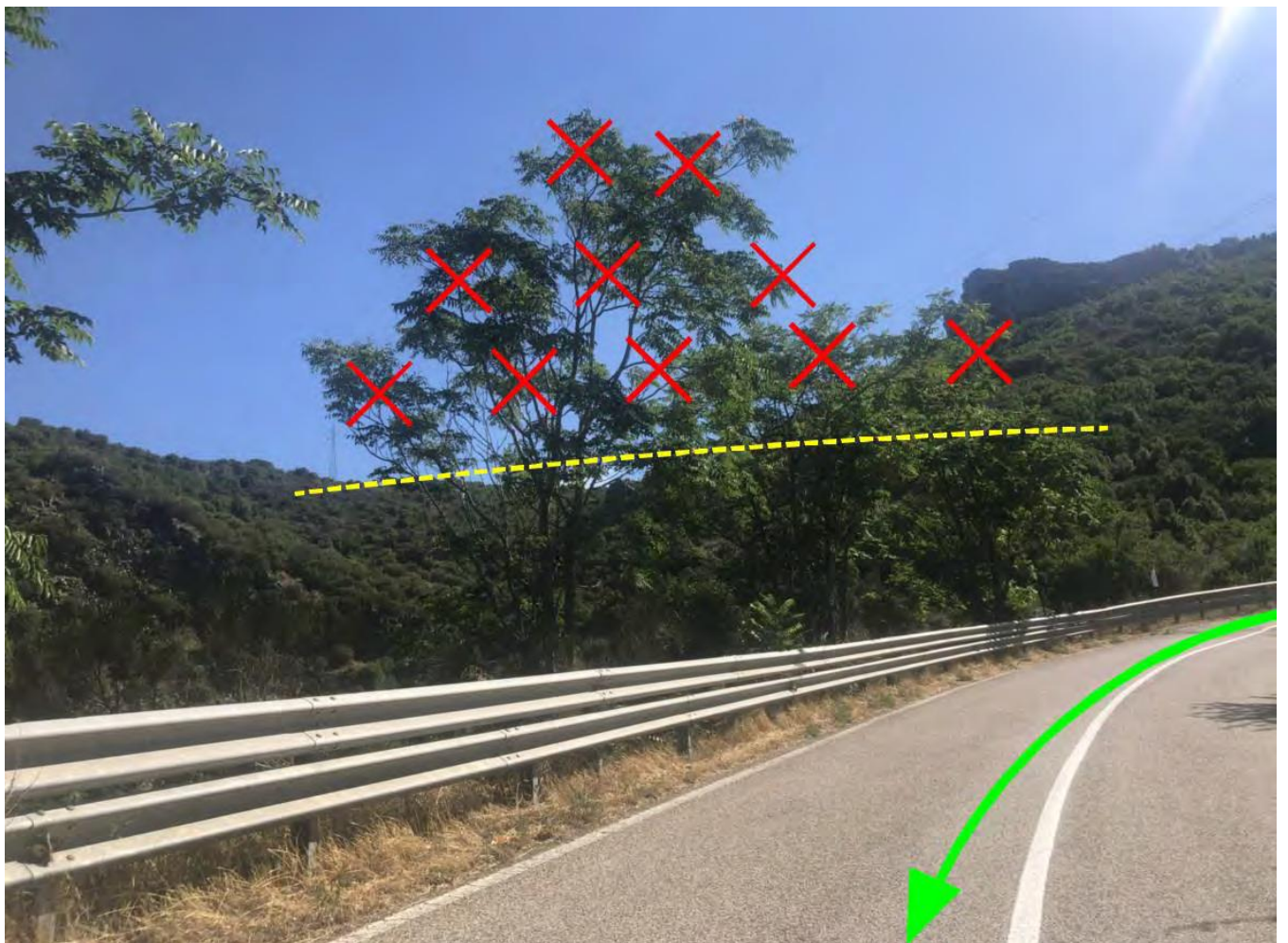
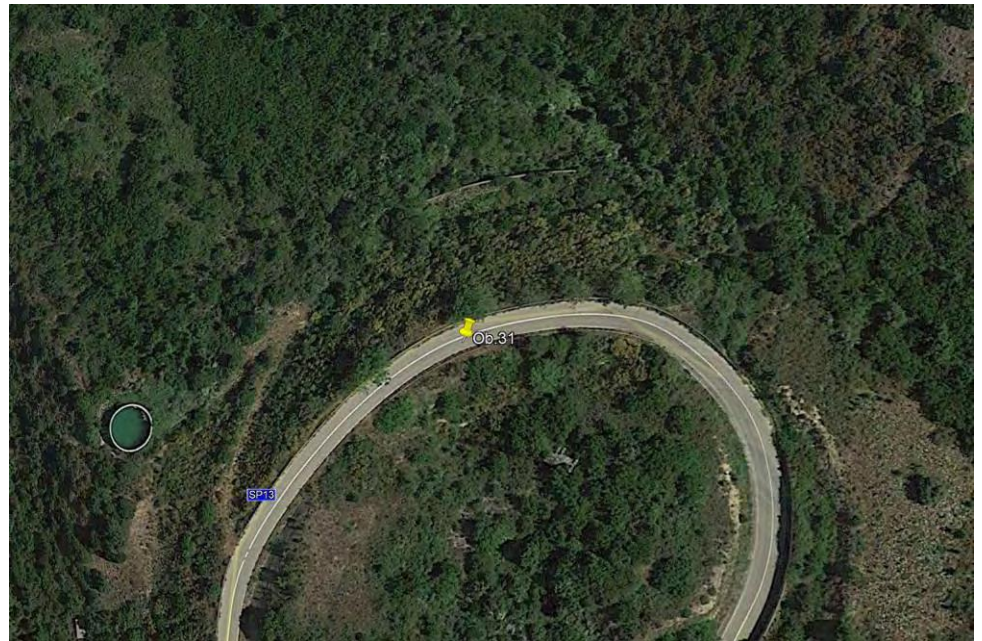
Observation 30

39°40'27.75"N - 9°26'22.93"E



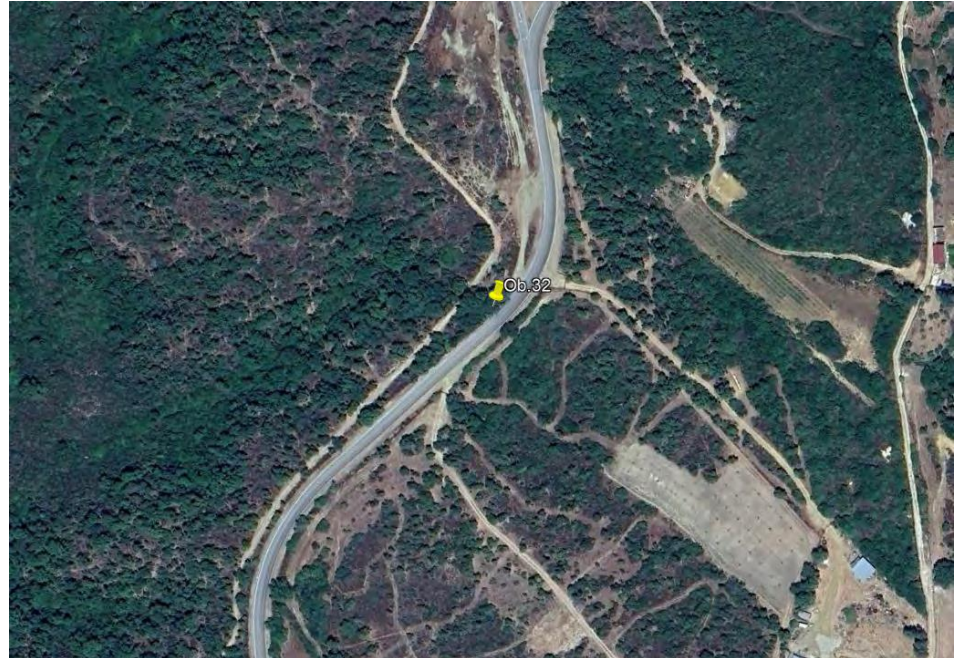
Observation 31

39°39'35.86"N - 9°24'08.07"E



Observation 32

39°38'48.03"N - 9°21'24.56"E



Observation 33

39°38'02.14"N - 9°21'25.61"E



Observation 34

39°38'00.91"N - 9°21'05.52"E



Observation 35

39°37'59.80"N - 9°20'43.86"E



Observation 36

39°37'12.94"N - 9°20'23.58"E



Observation 37

39°37'10.53"N - 9°20'10.52"E



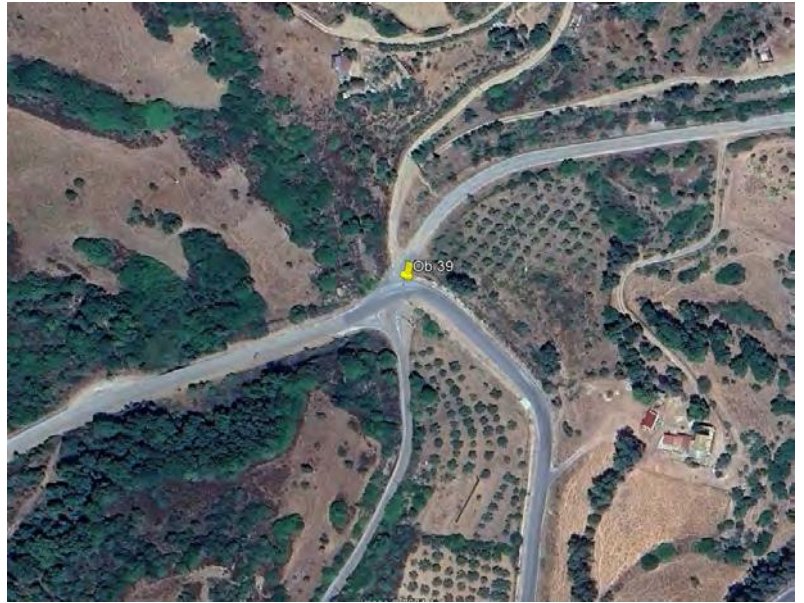
Observation 38

39°37'09.20"N - 9°20'07.74"E



Observation 39

39°37'16.40"N - 9°20'04.97"E



Observation 40

39°38'13.30"N - 9°17'49.18"E



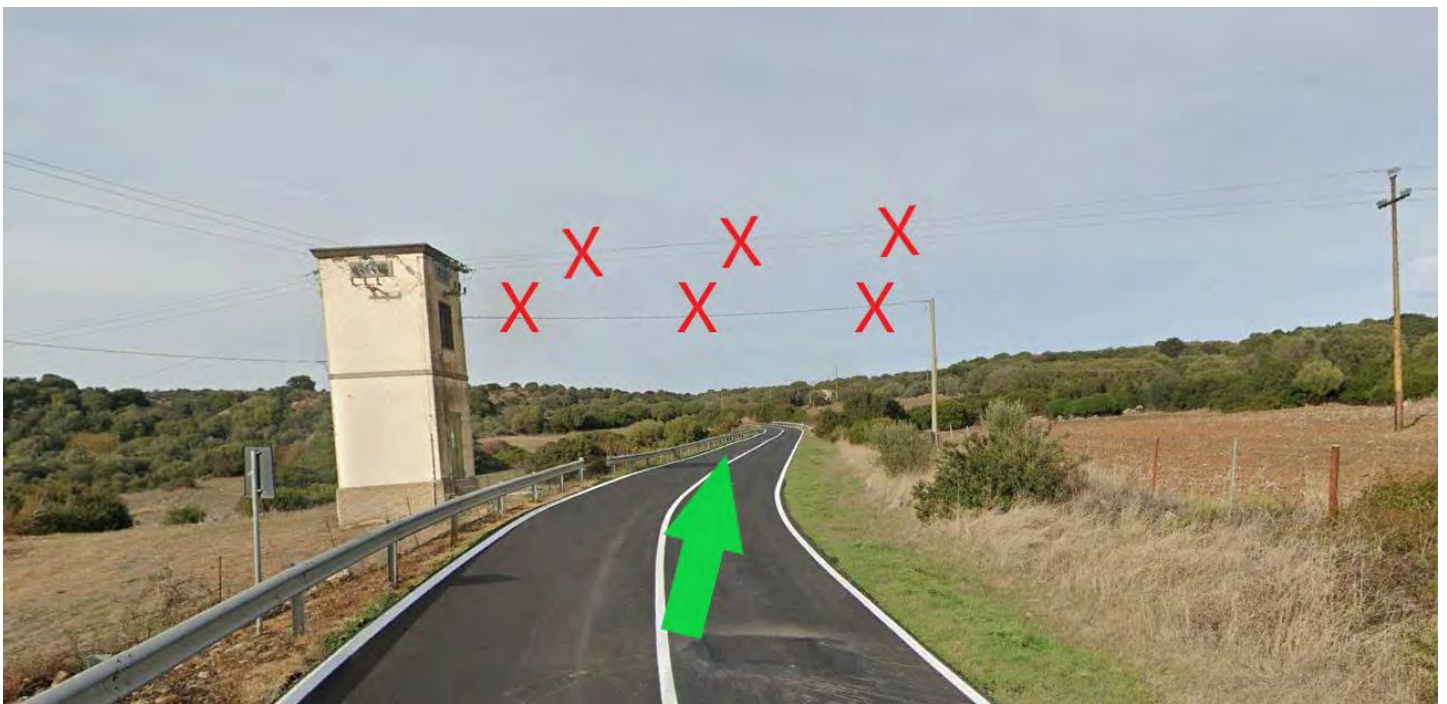
Observation 41

39°38'11.80"N - 9°17'47.81"E



Observation 42

39°39'53.73"N - 9°16'53.45"E



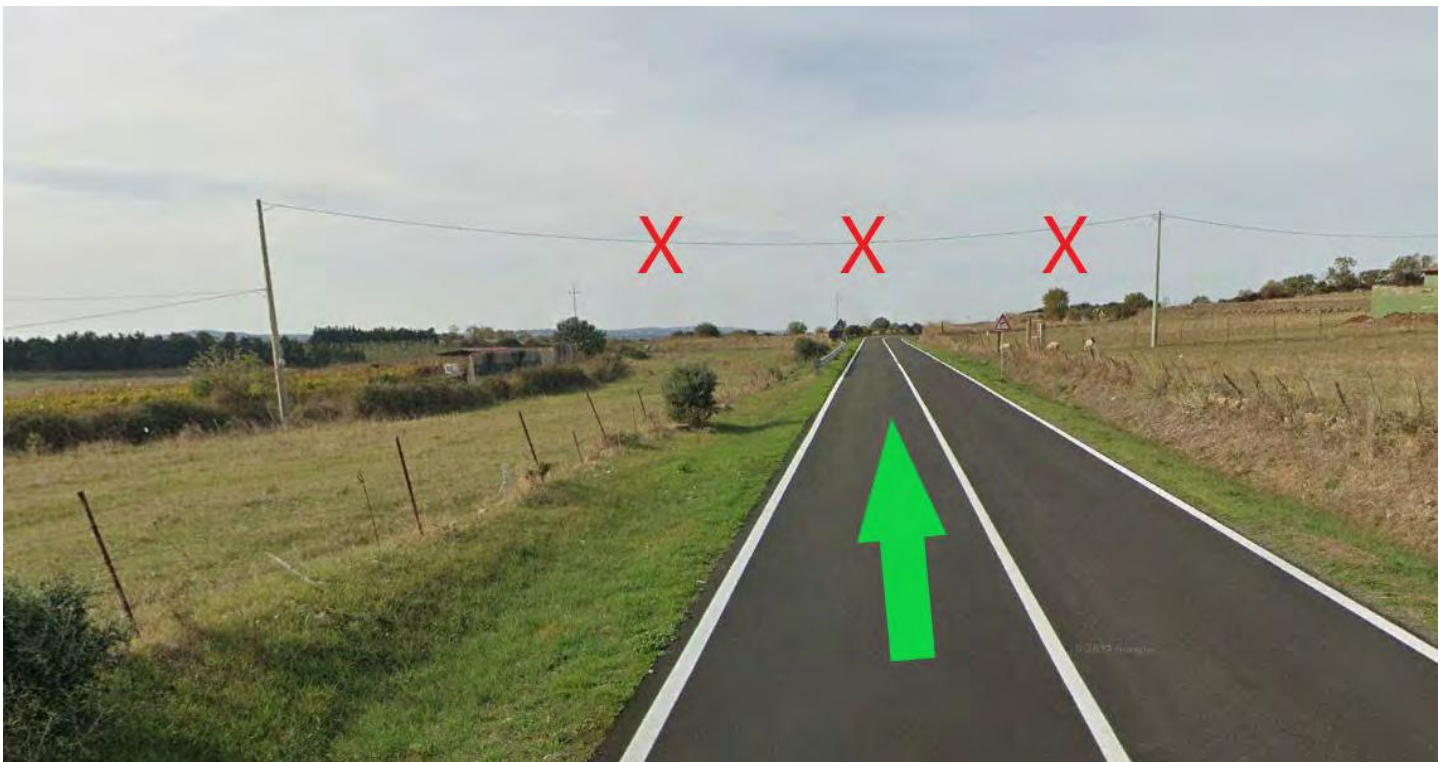
Observation 43

39°40'41.77"N - 9°15'43.01"E



Observation 44

39°40'44.96"N - 9°15'35.69"E



Observation 45

39°41'08.18"N - 9°15'14.64"E



Observation 46

39°41'14.58"N - 9°15'11.32"E



Observation 47

39°41'16.07"N - 9°15'11.43"E



Observation 48

39°41'17.87"N - 9°15'11.41"E



Observation 49

39°41'19.08"N - 9°15'11.41"E



Observation 50

39°41'20.88"N - 9°15'11.39"E



Observation 51

39°41'24.97"N - 9°15'11.29"E



Observation 52

39°41'29.24"N - 9°15'11.29"E



Observation 53

39°41'31.31"N - 9°15'10.86"E



Observation 54

39°41'33.98"N - 9°15'11.14"E



Observation 55

39°41'42.76"N - 9°15'14.85"E



Observation 56

39°41'50.61"N - 9°15'03.89"E



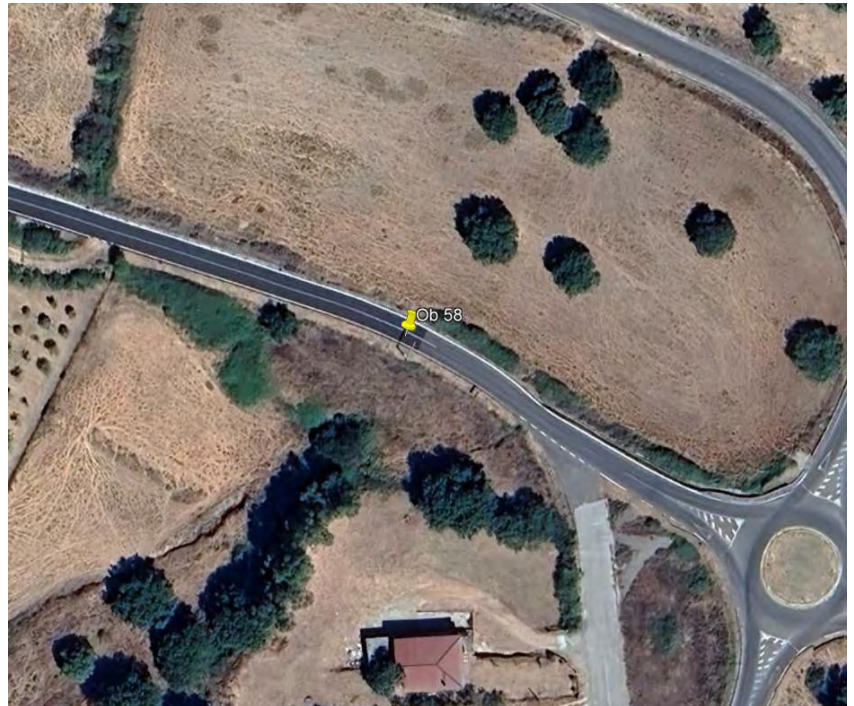
Observation 57

39°42'03.12"N - 9°14'38.55"E



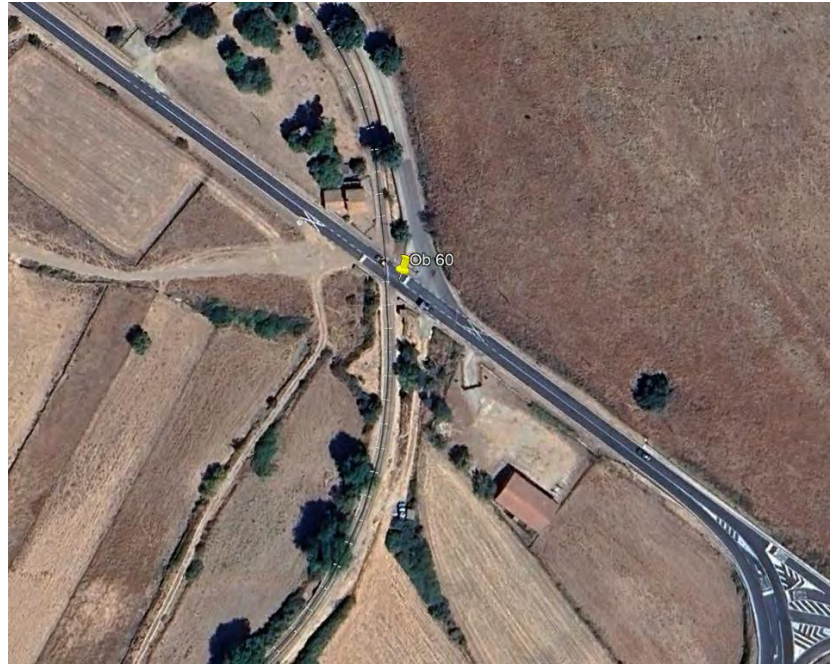
Observation 58

39°42'05.89"N - 9°14'32.47"E



Observation 60

39°43'10.98"N - 9°13'49.34"E



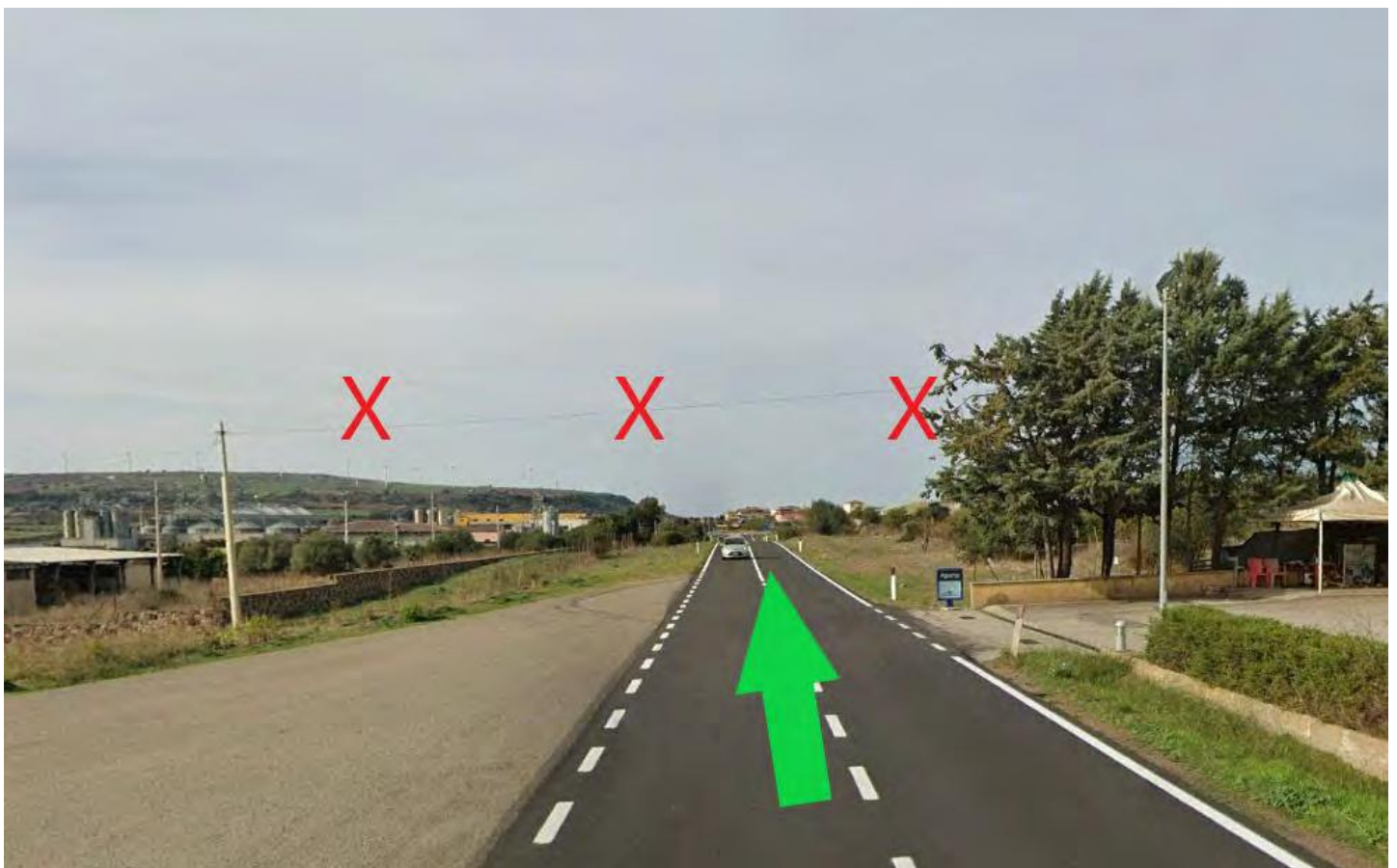
Observation 61

39°43'12.41"N - 9°13'47.17"E



Observation 62

39°43'18.97"N - 9°13'37.14"E



Observation 63

39°43'44.49"N - 9°12'46.34"E



Observation 64

39°43'46.94"N - 9°12'36.40"E



Observation 65

39°43'45.22"N - 9°12'35.56"E



Observation 66

39°43'11.85"N - 9°11'48.88"E



Observation 67

39°42'40.69"N - 9°11'13.29"E



Observation 68

39°42'36.46"N - 9°11'08.96"E



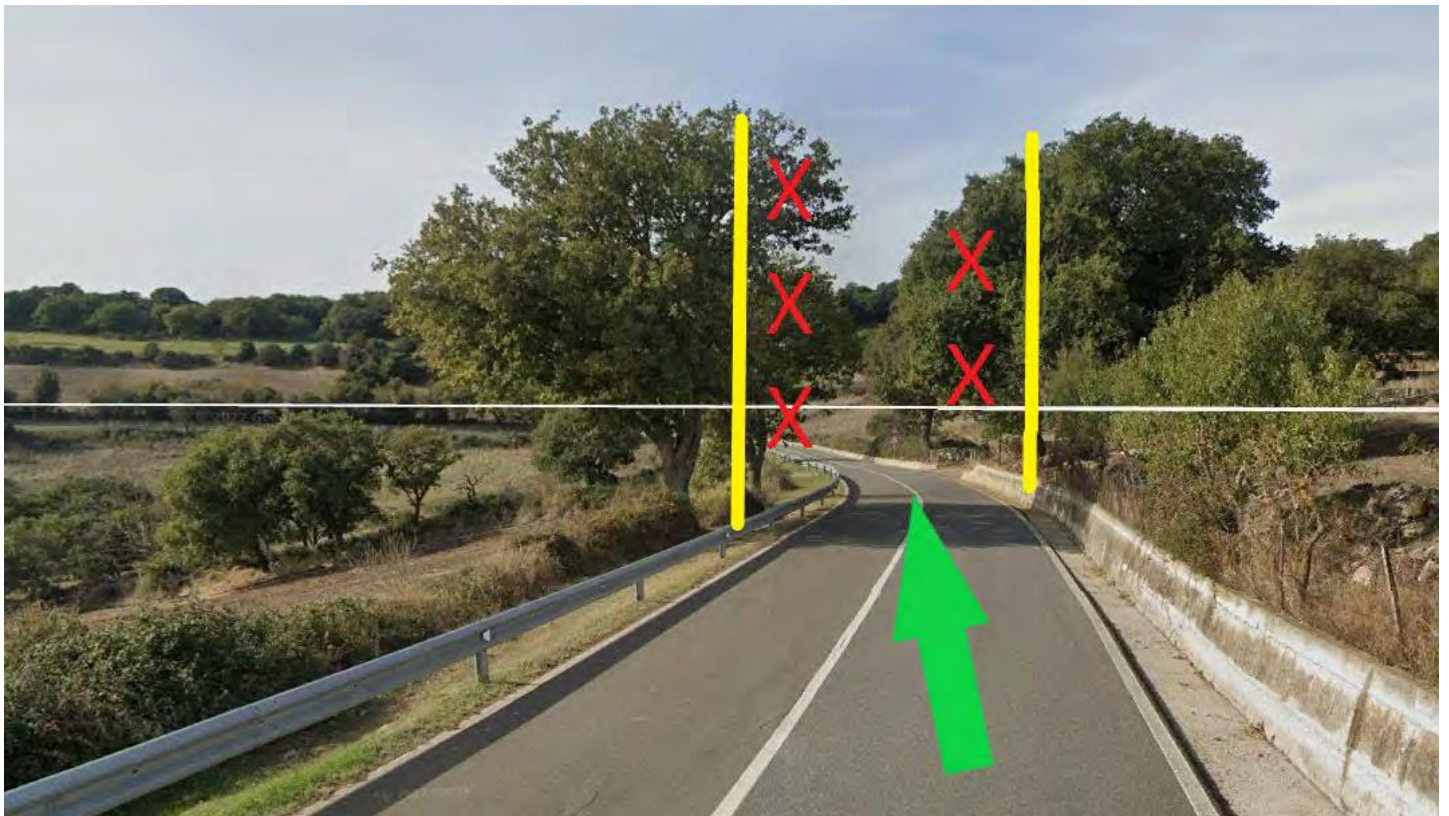
Observation 69

39°42'30.68"N - 9°11'00.91"E



Observation 70

39°42'31.93"N - 9°10'46.08"E



Observation 71

39°41'52.43"N - 9°09'19.46"E



Observation 72

39°42'17.00"N - 9°09'12.79"E



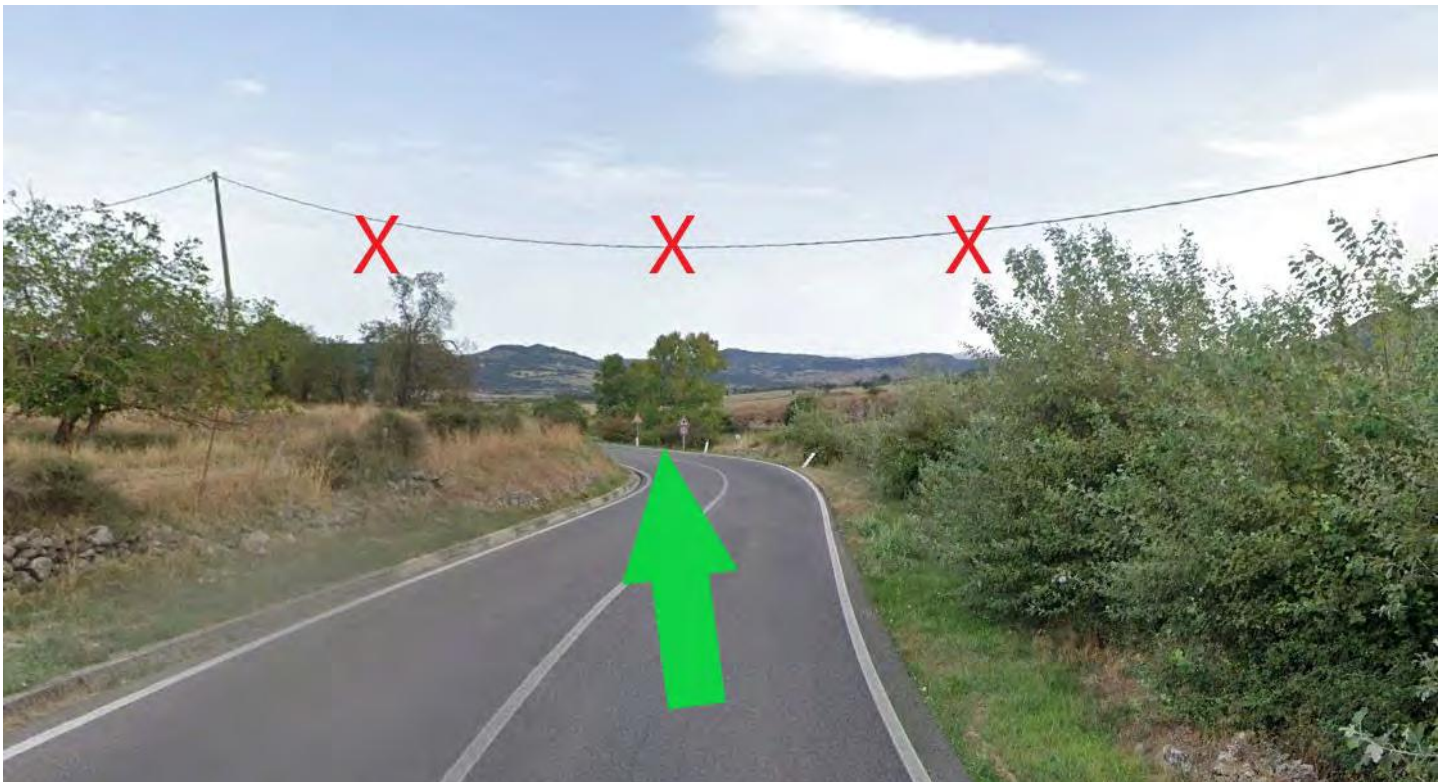
Observation 73

39°42'39.75"N - 9°08'58.43"E



Observation 74

39°43'04.58"N - 9°08'44.47"E



Observation 75

39°43'38.58"N - 9°08'27.22"E

