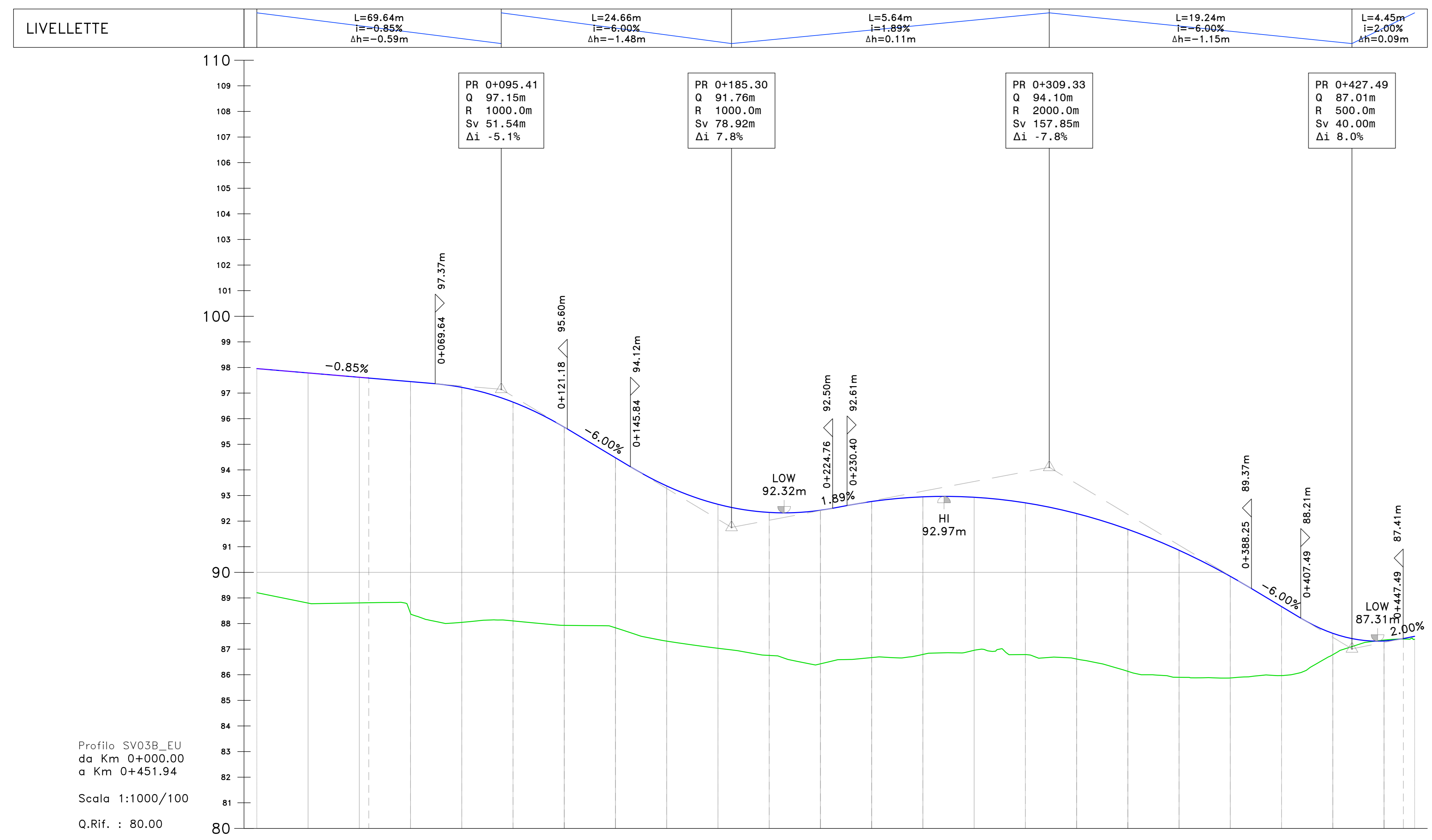
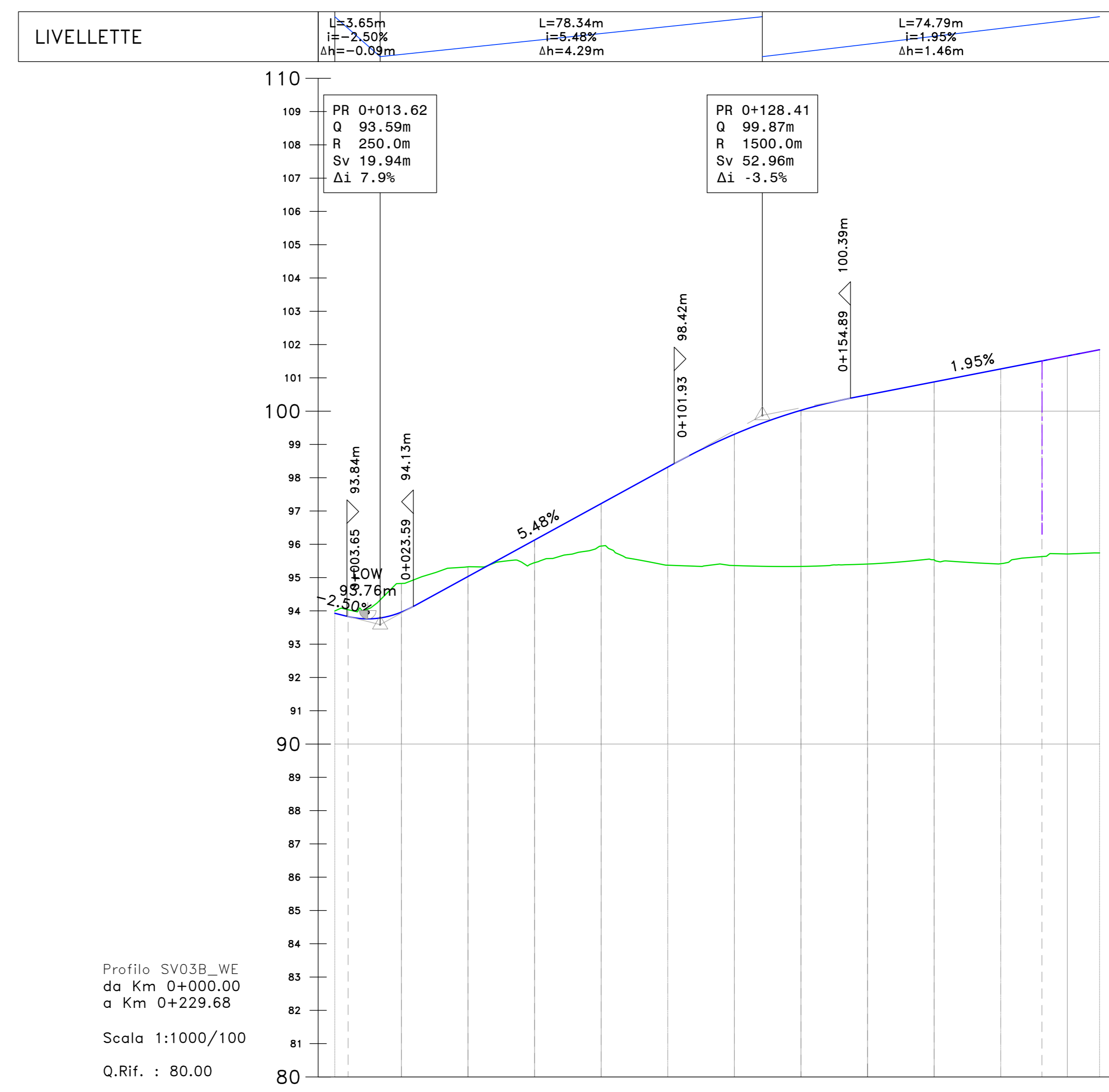


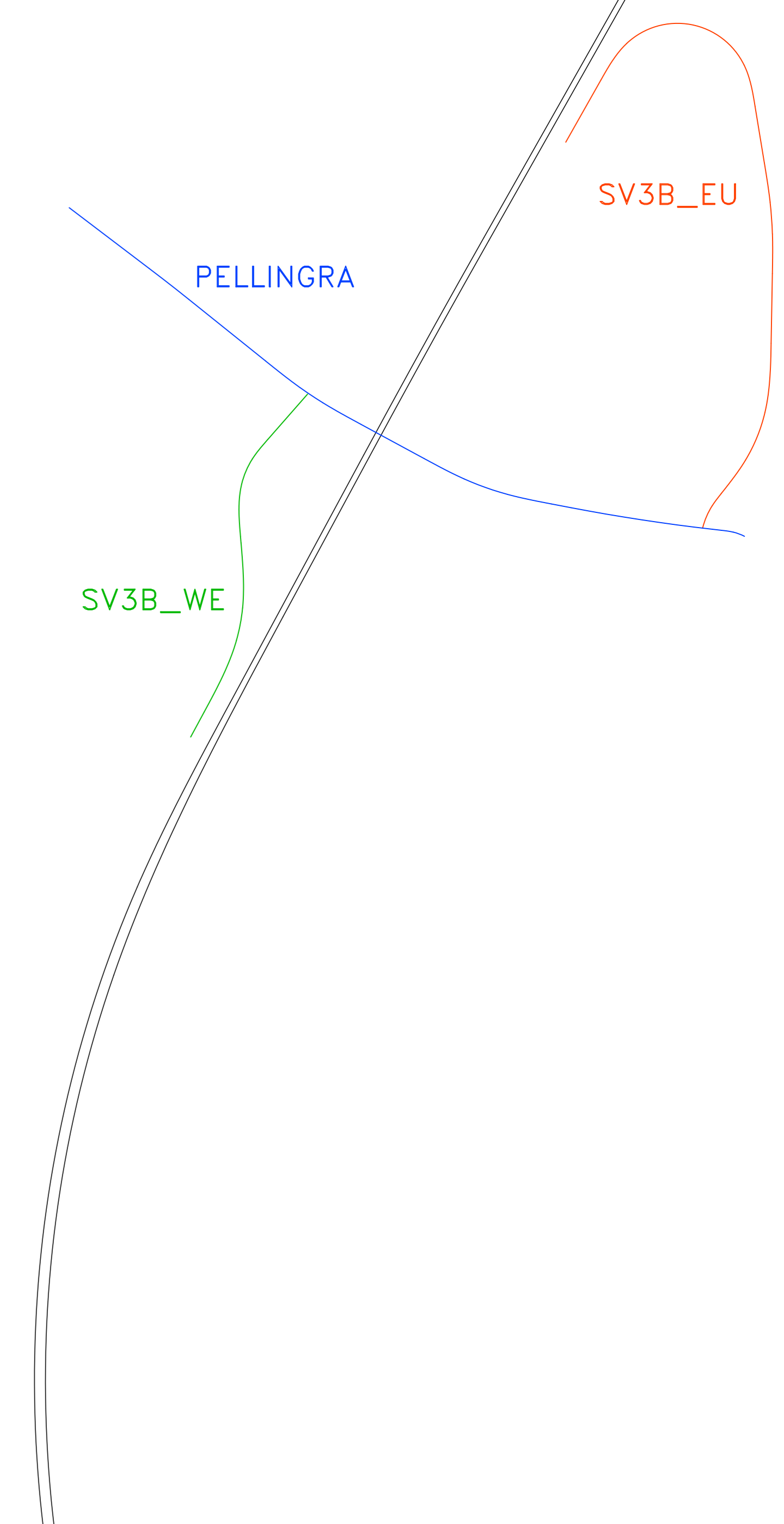
SS121



Profilo SV03B_EU
da Km 0+000.00
a Km 0+451.94
Scala 1:1000/100
Q.Rif. : 80.00



Profilo SV03B_WE
da Km 0+000.00
a Km 0+229.65
Scala 1:1000/100
Q.Rif. : 80.00



NUMERO SEZIONE	01	02	03	04	05	06	07	08	09	10	11	12	13	14	15	16	17	18	19	20	21	22
DISTANZE PARZIALI		16.30	20.00	20.00	20.00	20.00	20.00	20.00	20.00	20.00	20.00	20.00	20.00	20.00	20.00	20.00	20.00	20.00	20.00	20.00	7.55	22
DISTANZE PROGRESSIVE	0+000	0+016.30	0+036.30	0+056.30	0+076.30	0+096.30	0+116.30	0+136.30	0+156.30	0+176.30	0+196.30	0+216.30	0+236.30	0+256.30	0+276.30	0+296.30	0+316.30	0+336.30	0+356.30	0+376.30	0+383.85	0+405.85
QUOTE PROGETTO	88.81	88.40	88.05	88.10	87.33	87.83	87.32	87.05	86.76	86.45	86.68	86.13	86.13	85.90	85.97	85.97	85.78	85.42	85.36	85.36	85.42	85.42
QUOTE TERRENO	88.81	88.40	88.05	88.10	87.33	87.83	87.32	87.05	86.76	86.45	86.68	86.13	86.13	85.90	85.97	85.97	85.78	85.42	85.36	85.36	85.42	85.42
DIFFERENZA QUOTE	0.00	0.00	0.00	0.00	0.00	0.00	0.00	0.00	0.00	0.00	0.00	0.00	0.00	0.00	0.00	0.00	0.00	0.00	0.00	0.00	0.00	0.00
ANDAM. PLANIMETRICO	L=43.50m, L=27.22m, L=51.01m, L=26.59m, L=39.99m, L=44.64m, L=85.32m, L=49.25m, L=31.87m, L=25.04m, L=25.04m, L=15.12m, L=16.63m, L=32.00m, L=39.60m, L=20.12m, L=47.78m, L=17.27m																					
ANDAMENTO CIGLI	2.50%, 2.50%, 7.00%																					
ETTOMETRICHE																						

NUMERO SEZIONE	01	02	03	04	05	06	07	08	09	10	11	12
DISTANZE PARZIALI	16.00	20.00	20.00	20.00	20.00	20.00	20.00	20.00	20.00	20.00	12.36	
DISTANZE PROGRESSIVE	0+000	0+016.00	0+036.00	0+056.00	0+076.00	0+096.00	0+116.00	0+136.00	0+156.00	0+176.00	0+188.36	
QUOTE PROGETTO	94.03	93.83	93.96	95.03	95.03	95.32	98.32	99.31	100.03	100.03	101.27	101.51
QUOTE TERRENO	94.03	93.83	93.96	95.03	95.03	95.32	98.32	99.31	100.03	100.03	101.27	101.51
DIFFERENZA QUOTE	0.00	0.00	0.00	0.00	0.00	0.00	0.00	0.00	0.00	0.00	0.00	0.00
ANDAM. PLANIMETRICO	L=37.27m, L=15.12m, L=16.63m, L=27.58m, L=50.00m, L=40.00m, L=32.00m, L=39.60m, L=20.12m, L=47.78m, L=17.27m											
ANDAMENTO CIGLI	2.50%, 2.50%, 7.00%, 7.00%, 7.00%, 7.00%, 7.00%, 7.00%, 7.00%, 7.00%, 7.00%, 7.00%											
ETTOMETRICHE												

S.S.121 "Catanesa"
Intervento S.S.121 - Tratto Palermo (A19) - rotatoria Bolognetta

PROGETTO DEFINITIVO COD. UP62

PROGETTAZIONE: AM VIA - SERING - VDP - BRENIG RESPONSABILE DELL'INTEGRAZIONE DELLE PRESTAZIONI SPECIALISTICHE: Dir. Ing. Giovanni Pizzoli (Dir. Ing. Prov. Roma A32794)	GRUPPO DI PROGETTAZIONE AMVIC/GRUP
---	--

PROGETTO STRADALE
SV03B SVINCOLO MISILMERI SUD
Profilo di progetto Tav 01

CODICE PROGETTO DPUP0062	NOME FILE UP62_V04P500TRAFLO1-02_A	REVISIONE A	SCALA: 1:1000
PROGETTO LIV. PROG. ANNO D 23	CODICE ELAB. V04P500TRAFLO1		

D C B A	EMISSIONE FEBR 2023	REDAZIONE M.TOSI M.CAPASSO	APPROVATO G.PAZZA
REV.	DESCRIZIONE	DATA	VERIFICATO