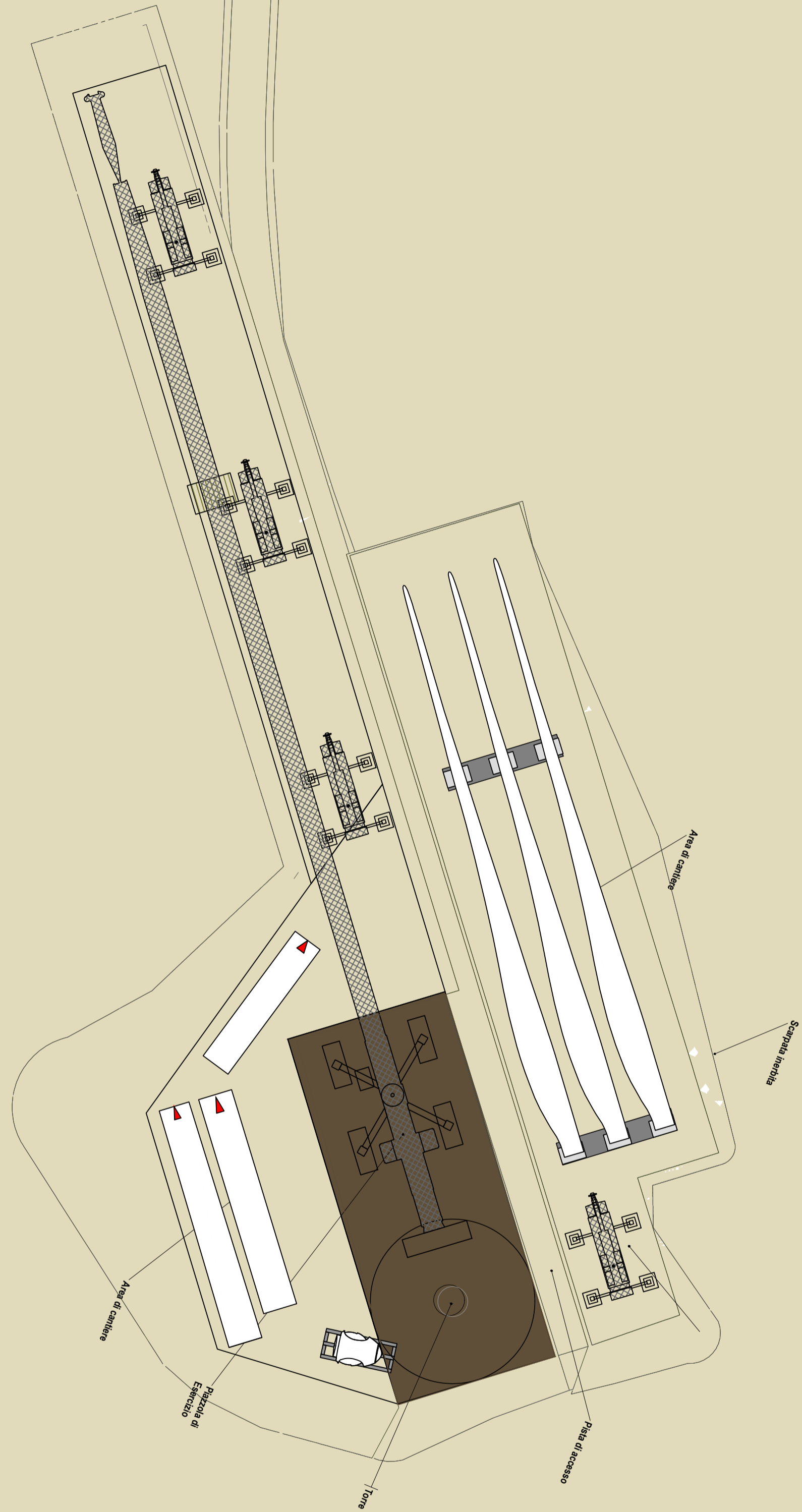
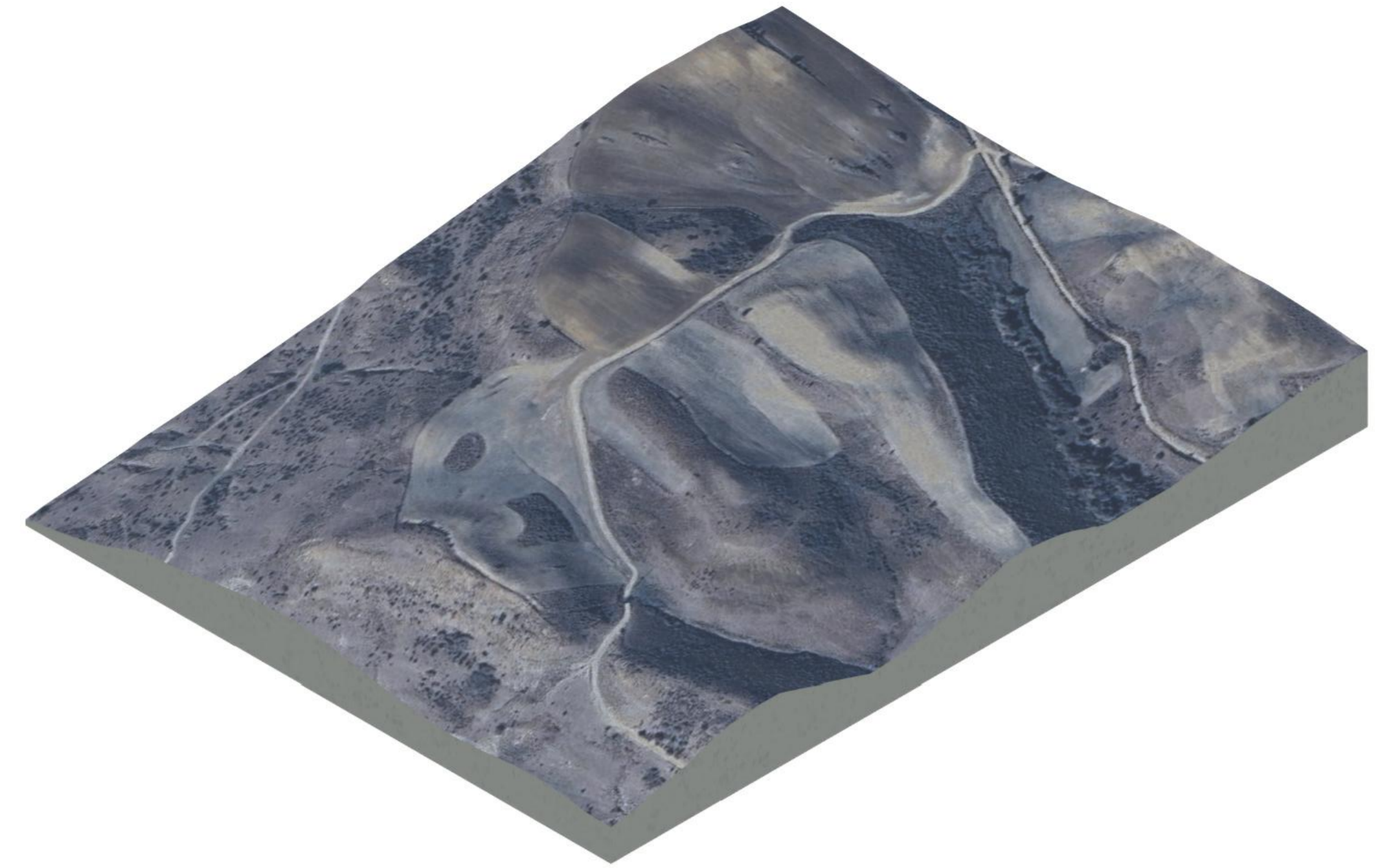


PLANIMETRIA

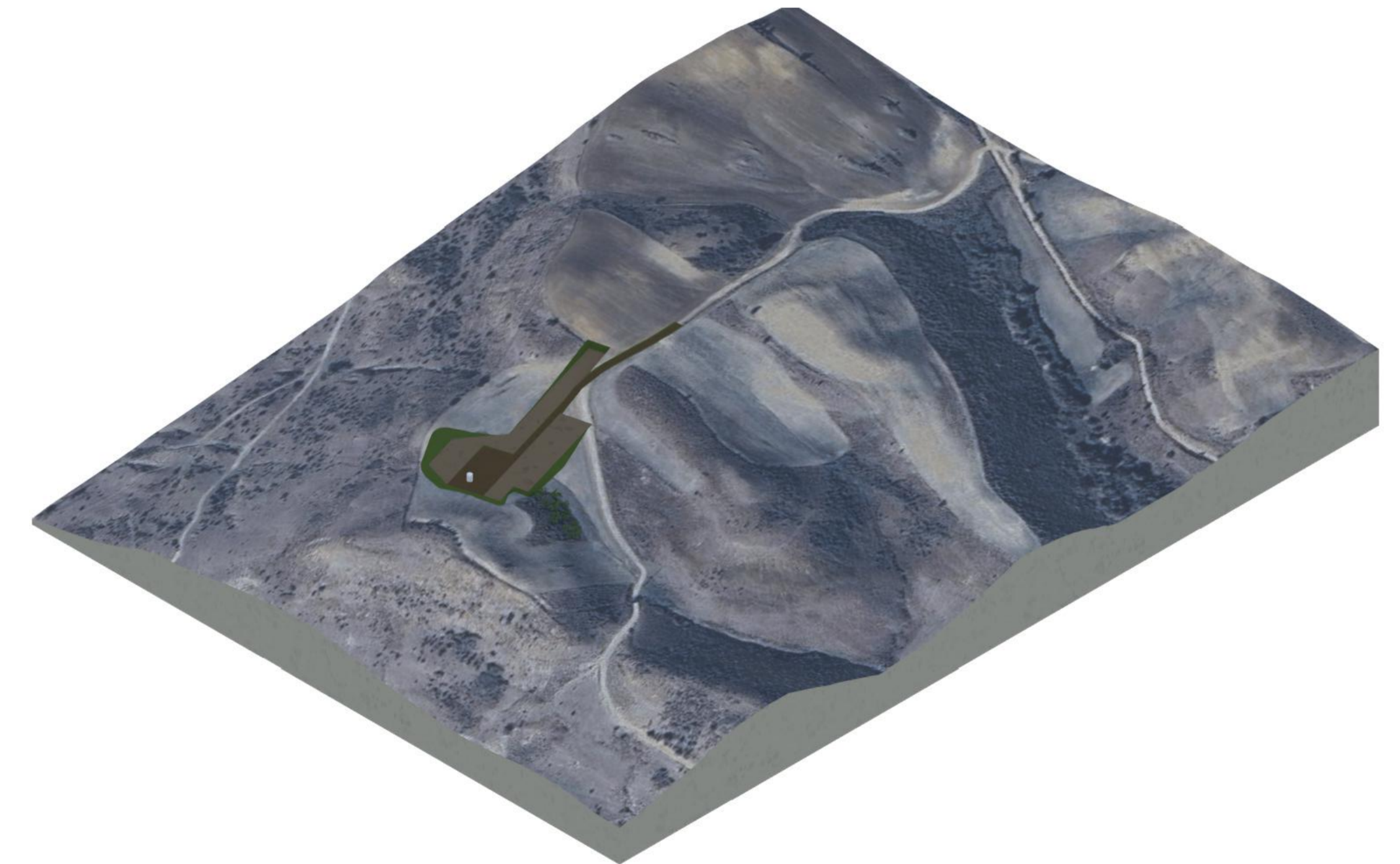
Scala 1:500






ANTE OPERAM



FASE DI CANTIERE



	 temz s.r.l. Via Sesto San Giovanni 100 - 00186 Roma Tel. 06/4981204 - Fax 06/4981210 PEC: temz@temz.it - mail: info@temz.it	Note di revisione			PROGETTO Parco eolico "San Leone" Scandale, Cutro, Crotone (KR)		TITOLO TAVOLA Planimetria aerogeneratore D09	
		PROPRIETARIO  Renantis Italia Srl Via Monza 275 - 20123 Milano renantis.com		NOME FILE nome file sorgente.dwg	FORMATO A1	SCALA 1:500	PROGRESSIVO 22048	PROGETTO SCNP
REV	DATA	DESCRIZIONE	PREP	APPR				
00	08/05/24	Prima emissione	AH	VDA				