




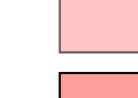



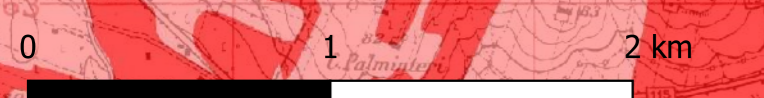
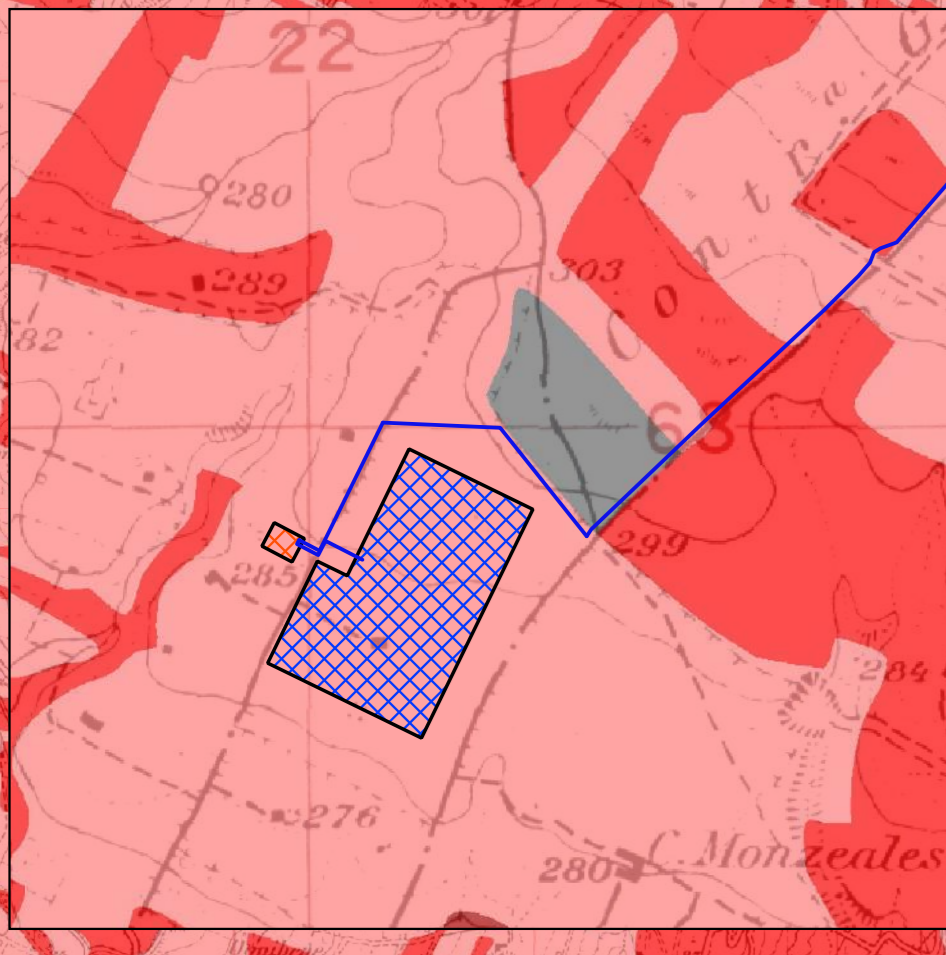


- Legenda**
-  Aerogeneratore in progetto
 -  Elettrodotti interrotti AT da realizzare
 -  Area di Accumulo
 -  Futura stazione elettrica di Tema S.p.A.

- Carta Pressione Antropica**
-  Aree antropizzate
 -  Bassa
 -  Media
 -  Alta
 -  Molto alta



Committente:





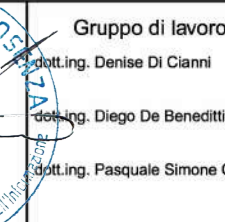


CONTESSA ENTELLINA
ENERGY & INFRASTRUCTURE
CONTESSA ENTELLINA S.R.L.
P.IVA 1329980960
VIA DANTE 7 MILANO C.A.P. 20123

Titolo del Progetto:
Progetto per la realizzazione e l'esercizio di un parco eolico denominato "Contessa Entellina" di 39,6 MW con sistema di accumulo di 12 MW e le relative opere connesse da svilupparsi nei comuni di Contessa Entellina (PA), Santa Margherita di Belice (AG), Sambuca di Sicilia (AG) e Menfi (AG)

Documento:	PROGETTO DEFINITIVO	N° Tarocco:	SIAG015
Elaborato:	Carta pressione antropica	SCALA:	1:25.000
		FOLIO:	1 di 1
		FORMATO:	A0

Idat: SA - Elaborati grafici Nome File: SOGSIAG015AG.pdf

Progettazione:  Gruppo di lavoro:    

Rev.	Data Revisione:	Descrizione Revisione	Redatto	Controllato	Approvato
00	11/12/2023	PRIMA EMISSIONE	New Dev.	CONTESSA ENTELLINA	CONTESSA ENTELLINA