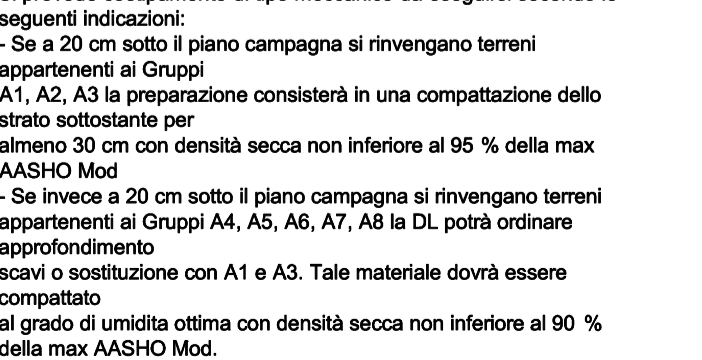
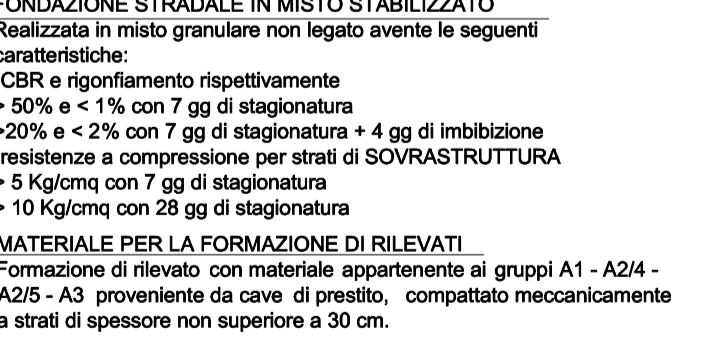
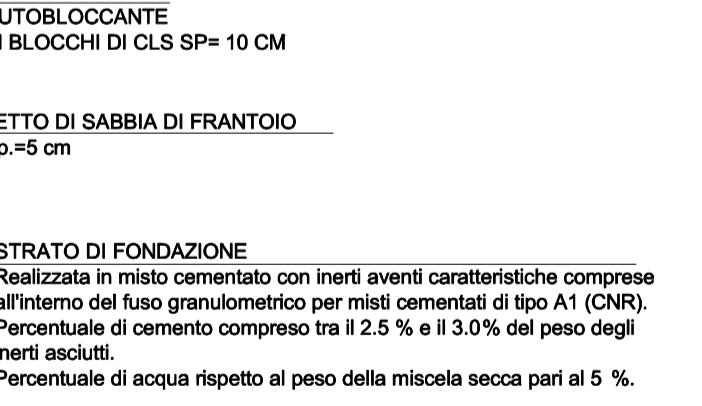
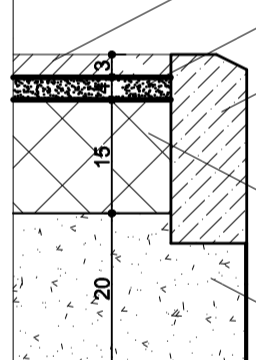
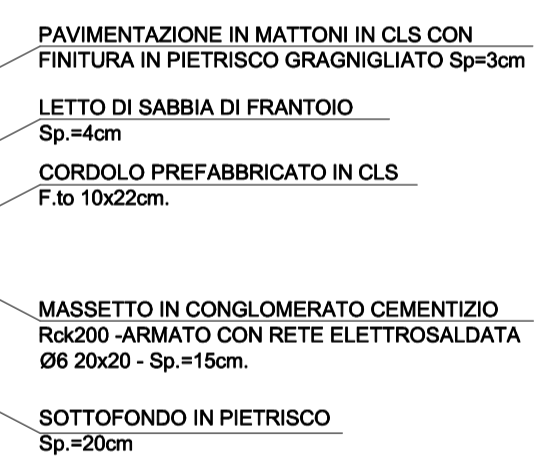
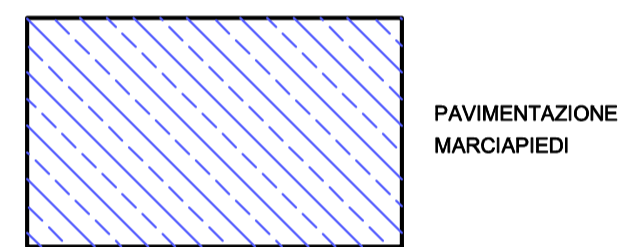
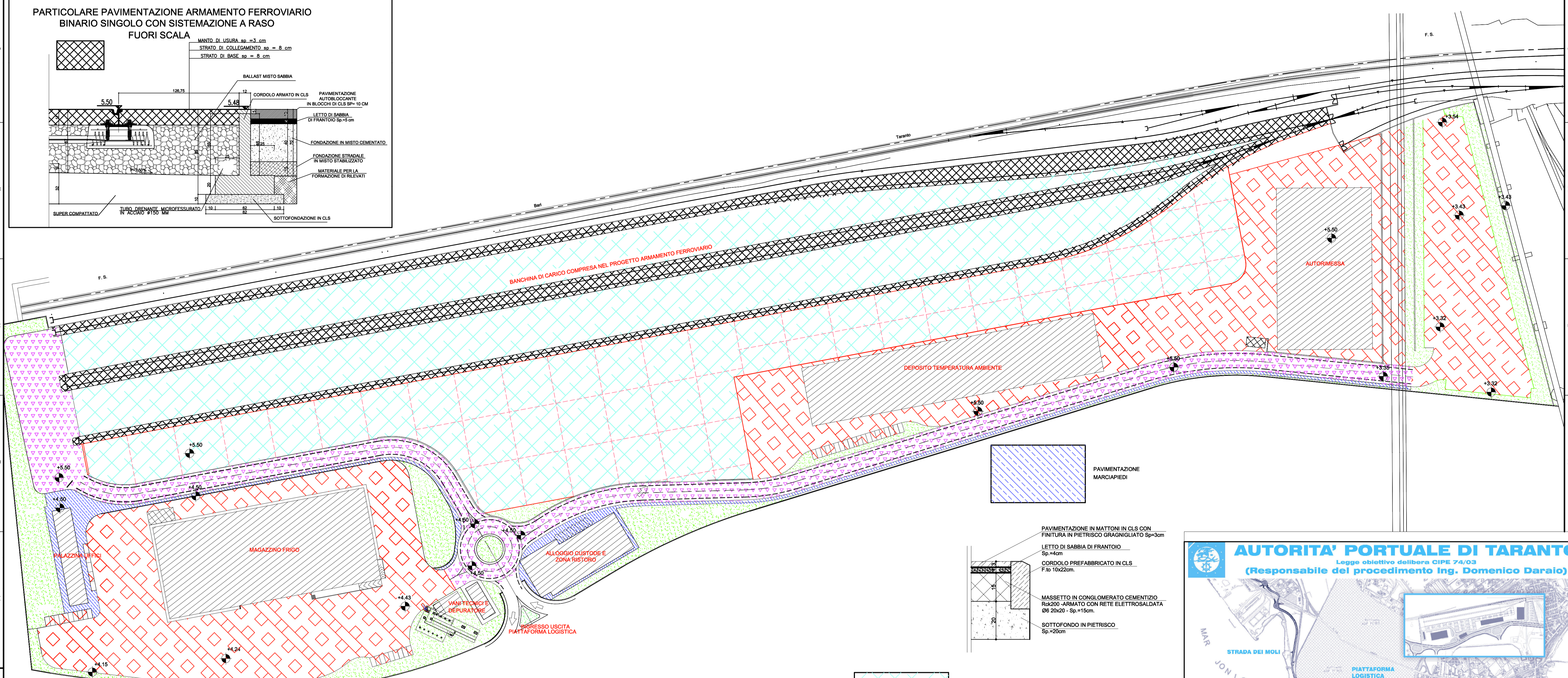
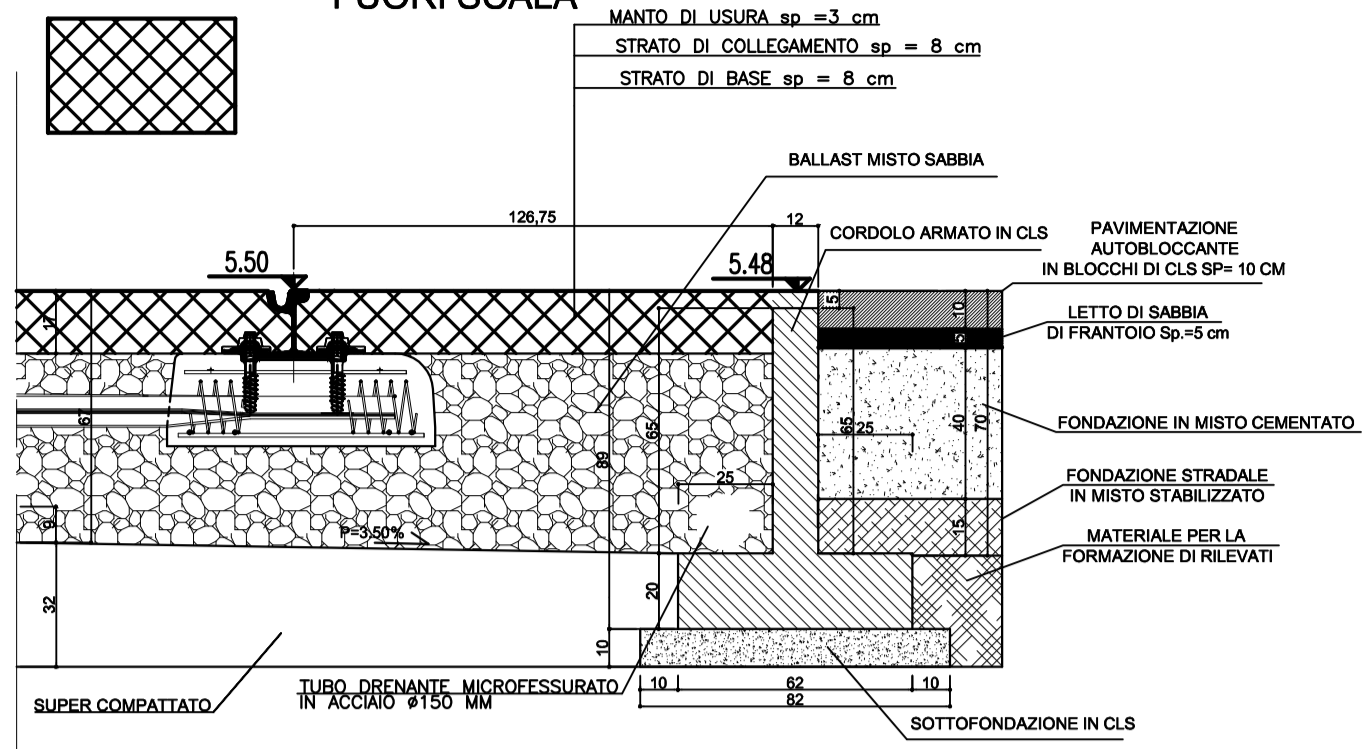
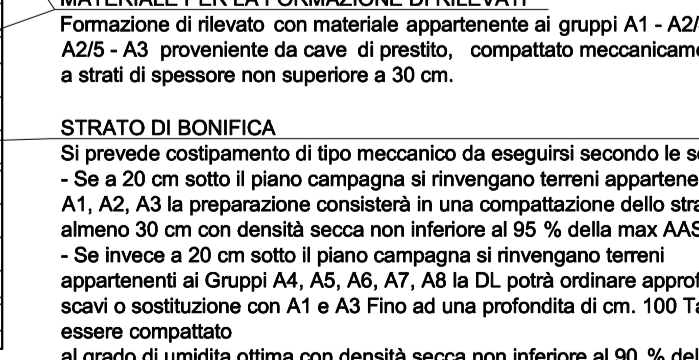
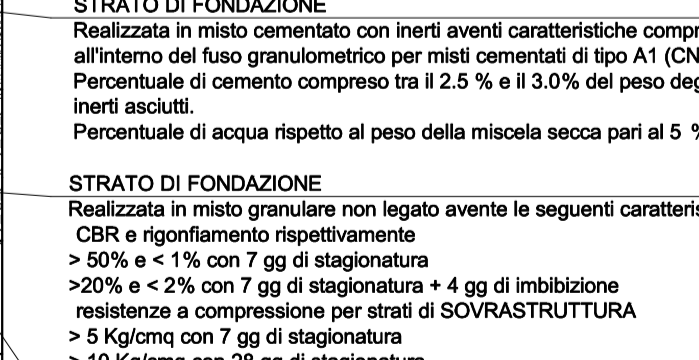
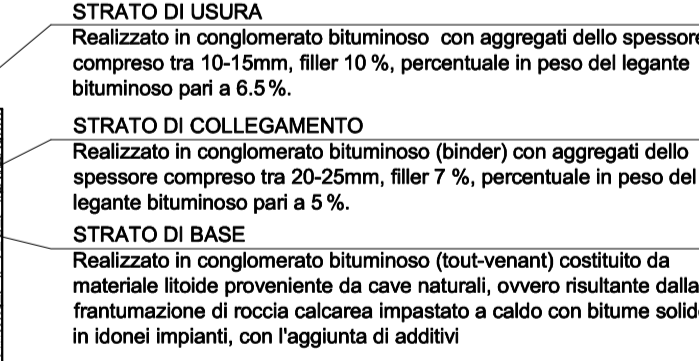
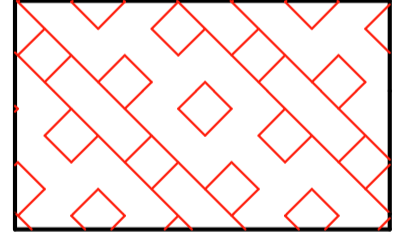
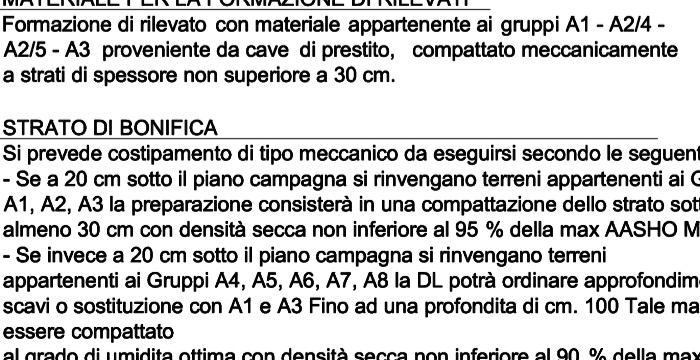
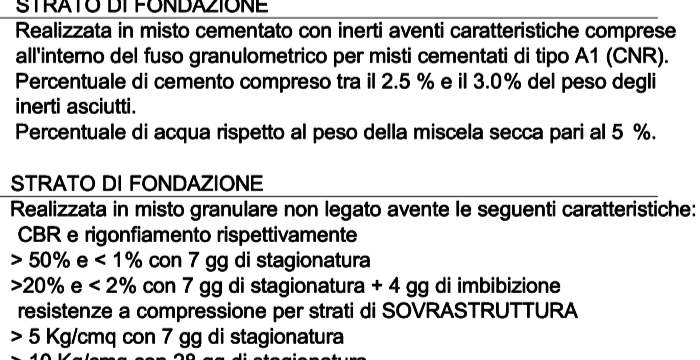
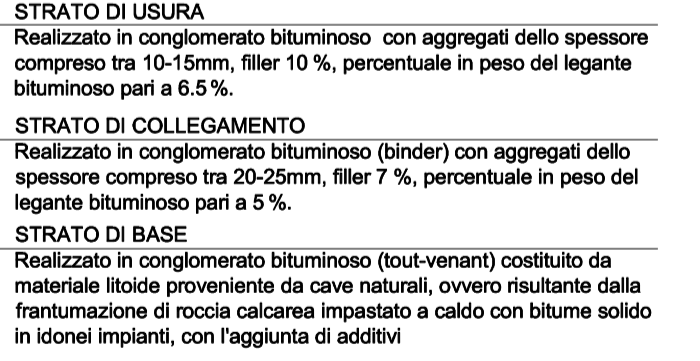
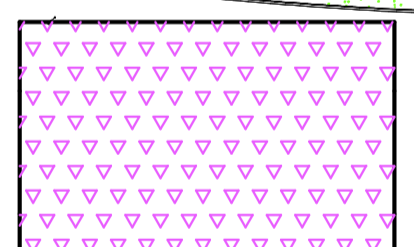


PARTICOLARE PAVIMENTAZIONE ARMAMENTO FERROVIARIO BINARIO SINGOLO CON SISTEMAZIONE A RASO FUORI SCALA



SCALA 1:10



AUTORITA' PORTUALE DI TARANTO
 Legge obiettivo delibera CIPE 74/03
 (Responsabile del procedimento Ing. Domenico Daraio)

01	29-09-2006	Prima emissione	L.Florito	A.Panzica	G.Gecido
00	31-05-2006	Emissione in bozza	L.Florito	A.Panzica	G.Gecido
revisione	data	decisione revisione	disegnato	verificato	approvato

SOCIETA' DI PROGETTO:
TARANTO LOGISTICA S.p.A.

AUTORITA' PORTUALE TARANTO

PIASTRA PORTUALE DI TARANTO

Disegno n° **123-700** E, I, U, S, T, S, I, 0, 5

PROGETTO DEFINITIVO
PIATTAFORMA LOGISTICA
PLANIMETRIA GENERALE SCHEMATIZZAZIONE
DELLE PAVIMENTAZIONI

Nome File: E:\USTS105_REV_01.DWG
 tipo doc: PPL
 derivato da:
 formato: A1
 scala: 1:1000/1:10
 foglio: 1