



# NATURA 2000 - STANDARD DATA FORM

For Special Protection Areas (SPA),  
Proposed Sites for Community Importance (pSCI),  
Sites of Community Importance (SCI) and  
for Special Areas of Conservation (SAC)

SITE IT1345005  
SITENAME Portovenere - Riomaggiore - S. Benedetto

## TABLE OF CONTENTS

- [1. SITE IDENTIFICATION](#)
- [2. SITE LOCATION](#)
- [3. ECOLOGICAL INFORMATION](#)
- [4. SITE DESCRIPTION](#)
- [5. SITE PROTECTION STATUS](#)
- [6. SITE MANAGEMENT](#)
- [7. MAP OF THE SITE](#)

## 1. SITE IDENTIFICATION

<b>1.1 Type</b> B	<b>1.2 Site code</b> IT1345005	<a href="#">Back to top</a>
----------------------	-----------------------------------	-----------------------------

### 1.3 Site name

Portovenere - Riomaggiore - S. Benedetto

<b>1.4 First Compilation date</b> 1995-05	<b>1.5 Update date</b> 2019-12
--	-----------------------------------

### 1.6 Respondent:

**Name/Organisation:** Regione Liguria - Dipartimento Ambiente - Servizio Parchi, Aree Protette e Biodiversità  
**Address:** Via Fieschi, 15 - 16121 Genova  
**Email:** parchi@regione.liguria.it

### 1.7 Site indication and designation / classification dates

<b>Date site classified as SPA:</b>	0000-00
<b>National legal reference of SPA designation</b>	No data
<b>Date site proposed as SCI:</b>	1995-06
<b>Date site confirmed as SCI:</b>	No data
<b>Date site designated as SAC:</b>	2017-04
<b>National legal reference of SAC designation:</b>	DM 07/04/2017 - G.U. 98 del 28-4-2017

## 2. SITE LOCATION

### 2.1 Site-centre location [decimal degrees]:

[Back to top](#)

**Longitude** 9.771944      **Latitude** 44.102778

**2.2 Area [ha]:** 2665.0      **2.3 Marine area [%]:** 1.0

**2.4 Sitelength [km]:**  
0.0

### 2.5 Administrative region code and name

<b>NUTS level 2 code</b>	<b>Region Name</b>
--------------------------	--------------------

## 2.6 Biogeographical Region(s)

Mediterranean (100.0  
%)

## 3. ECOLOGICAL INFORMATION

### 3.1 Habitat types present on the site and assessment for them

[Back to top](#)

Annex I Habitat types						Site assessment			
Code	PF	NP	Cover [ha]	Cave [number]	Data quality	A B C D	A B C		
						Representativity	Relative Surface	Conservation	Global
1170B			26.65		P	A	C	A	A
1210B			26.65		P	C	C	C	C
1240B			26.65		P	B	C	B	C
5320B			26.65		P	C	B	B	C
5330B			106.6		P	A	B	C	B
6110B			26.65		P	C	C	B	C
6210B			133.25		P	B	C	B	C
6220B			79.95		P	C	C	C	C
6430B			53.3		P	B	C	B	C
8220B			26.65		P	B	C	B	B
8230B			26.65		P	D			
8240B			26.65		P	B	C	B	B
8310B			0.03	23	P	A	C	A	B
8330B			0.03	1	P	A	B	A	B
91AA			133.25		P	B	C	B	A
91E0B			2.66		P	C	C	C	B
9260B			479.7		P	A	C	B	C
9330B			53.3		P	B	C	C	B
9340B			213.2		P	C	C	C	B
9540B			533.0		P	A	C	C	B

- **PF:** for the habitat types that can have a non-priority as well as a priority form (6210, 7130, 9430) enter "X" in the column PF to indicate the priority form.
- **NP:** in case that a habitat type no longer exists in the site enter: x (optional)
- **Cover:** decimal values can be entered
- **Caves:** for habitat types 8310, 8330 (caves) enter the number of caves if estimated surface is not available.
- **Data quality:** G = 'Good' (e.g. based on surveys); M = 'Moderate' (e.g. based on partial data with some extrapolation); P = 'Poor' (e.g. rough estimation)

### 3.2 Species referred to in Article 4 of Directive 2009/147/EC and listed in Annex II of Directive 92/43/EEC and site evaluation for them

Species					Population in the site					Site assessment				
G	Code	Scientific Name	S	NP	T	Size		Unit	Cat.	D. qual.	A B C			
						Min	Max				Pop.	Con.	Iso.	Glo.
B	A086	<a href="#">Accipiter nisus</a>			w				P	DD	D			
B	A324	<a href="#">Aegithalos caudatus</a>			p				P	DD	D			
B	A226	<a href="#">Apus apus</a>			r				P	DD	D			
B	A227	<a href="#">Apus pallidus</a>			r				P	DD	C	B	B	C
B	A218	<a href="#">Athene noctua</a>			w				P	DD	D			
B	A215	<a href="#">Bubo bubo</a>			p				R	DD	C	B	B	B
B	A087	<a href="#">Buteo buteo</a>			p				P	DD	D			
B	A364	<a href="#">Carduelis carduelis</a>			p				P	DD	D			
B	A363	<a href="#">Carduelis chloris</a>			p				P	DD	D			
B	A365	<a href="#">Carduelis spinus</a>			w				P	DD	D			
B	A335	<a href="#">Certhia brachydactyla</a>			p				P	DD	D			
B	A211	<a href="#">Clamator glandarius</a>			p				R	DD	A	A	A	A
B	A208	<a href="#">Columba palumbus</a>			p	20	20	i		G	D			
B	A349	<a href="#">Corvus corone</a>			w				P	DD	D			
B	A212	<a href="#">Cuculus canorus</a>			r				P	DD	D			
B	A237	<a href="#">Dendrocopos major</a>			r				P	DD	D			

B	A269	<a href="#">Erithacus rubecula</a>							p							P	DD	D				
R	6137	<a href="#">Euleptes europaea</a>	Yes						p							P	DD	D				
I	6199	<a href="#">Euplagia quadripunctaria</a>							p							P	DD	C	B		C	C
B	A103	<a href="#">Falco peregrinus</a>							p							R	DD	C	B		B	B
B	A099	<a href="#">Falco subbuteo</a>							p							P	DD	D				
B	A096	<a href="#">Falco tinnunculus</a>							p							P	DD	D				
B	A359	<a href="#">Fringilla coelebs</a>							p							P	DD	D				
B	A342	<a href="#">Garrulus glandarius</a>							p							P	DD	D				
B	A233	<a href="#">Jynx torquilla</a>							r							P	DD	D				
B	A338	<a href="#">Lanius collurio</a>							c							P	DD	D				
B	A341	<a href="#">Lanius senator</a>							r							P	DD	C	B		C	C
B	A184	<a href="#">Larus argentatus</a>							p							P	DD	D				
B	A179	<a href="#">Larus ridibundus</a>							w							P	DD	D				
B	A271	<a href="#">Luscinia megarhynchos</a>							w							P	DD	D				
B	A383	<a href="#">Miliaria calandra</a>							w							P	DD	D				
M	1310	<a href="#">Miniopterus schreibersii</a>							p							P	DD	C		C	C	C
B	A281	<a href="#">Monticola solitarius</a>							r							P	DD	C	B		C	C
B	A262	<a href="#">Motacilla alba</a>							w							P	DD	D				
B	A261	<a href="#">Motacilla cinerea</a>							w							P	DD	D				
B	A319	<a href="#">Muscicapa striata</a>							r							P	DD	D				
M	1321	<a href="#">Myotis emarginatus</a>							p							P	DD	D				
B	A214	<a href="#">Otus scops</a>							r							P	DD	C	B		B	C
B	A328	<a href="#">Parus ater</a>							p							P	DD	D				
B	A329	<a href="#">Parus caeruleus</a>							p							P	DD	D				
B	A330	<a href="#">Parus major</a>							p							P	DD	D				
B	A354	<a href="#">Passer domesticus</a>							p							P	DD	D				
B	A356	<a href="#">Passer montanus</a>							p							P	DD	D				
B	A072	<a href="#">Pernis apivorus</a>							r							P	DD	D				
B	A392	<a href="#">Phalacrocorax aristotelis desmarestii</a>							c							P	DD	D				
B	A017	<a href="#">Phalacrocorax carbo</a>							w							P	DD	D				
B	A391	<a href="#">Phalacrocorax carbo sinensis</a>							w							P	DD	D				
B	A273	<a href="#">Phoenicurus ochruros</a>							w							P	DD	D				
B	A274	<a href="#">Phoenicurus phoenicurus</a>							c							P	DD	D				
B	A313	<a href="#">Phylloscopus bonelli</a>							r							P	DD	D				
B	A315	<a href="#">Phylloscopus collybita</a>							p							P	DD	D				
B	A235	<a href="#">Picus viridis</a>							p							P	DD	D				
B	A266	<a href="#">Prunella modularis</a>							w							P	DD	D				
B	A372	<a href="#">Pyrrhula pyrrhula</a>							w							P	DD	D				
B	A318	<a href="#">Regulus ignicapillus</a>							c							P	DD	D				
B	A317	<a href="#">Regulus regulus</a>							w							P	DD	D				
M	1304	<a href="#">Rhinolophus ferrumequinum</a>							p	50	50		i			G	C		C		C	C
M	1303	<a href="#">Rhinolophus hipposideros</a>							p							P	DD	C		C		C
B	A275	<a href="#">Saxicola rubetra</a>							c							P	DD	D				
B	A276	<a href="#">Saxicola torquata</a>							r							P	DD	D				
B	A155	<a href="#">Scolopax rusticola</a>							c							P	DD	D				
B	A361	<a href="#">Serinus serinus</a>							p							P	DD	D				
B	A332	<a href="#">Sitta europaea</a>							p							P	DD	D				
A	6206	<a href="#">Speleomantes ambrosii</a>							p							C	DD	C	B		C	B
B	A191	<a href="#">Sterna sandvicensis</a>							w							P	DD	D				
B	A210	<a href="#">Streptopelia turtur</a>							r							P	DD	D				
B	A219	<a href="#">Strix aluco</a>							r							P	DD	D				
B	A351	<a href="#">Sturnus vulgaris</a>							c							P	DD	D				
B	A311	<a href="#">Sylvia atricapilla</a>							p							P	DD	D				
B	A304	<a href="#">Sylvia cantillans</a>							r							P	DD	C	B		C	C
B	A306	<a href="#">Sylvia hortensis</a>							r							P	DD	C	B		C	C
B	A305	<a href="#">Sylvia melanocephala</a>							p							P	DD	D				
B	A302	<a href="#">Sylvia undata</a>							p							P	DD	C	C		C	C
B	A265	<a href="#">Troglodytes troglodytes</a>							p							P	DD	D				

B	A286	<a href="#">Turdus iliacus</a>			w				P	DD	D			
B	A283	<a href="#">Turdus merula</a>			p				P	DD	D			
B	A285	<a href="#">Turdus philomelos</a>			w				P	DD	D			
B	A287	<a href="#">Turdus viscivorus</a>			w				P	DD	D			
B	A232	<a href="#">Upupa epops</a>			c				P	DD	D			

- **Group:** A = Amphibians, B = Birds, F = Fish, I = Invertebrates, M = Mammals, P = Plants, R = Reptiles
- **S:** in case that the data on species are sensitive and therefore have to be blocked for any public access enter: yes
- **NP:** in case that a species is no longer present in the site enter: x (optional)
- **Type:** p = permanent, r = reproducing, c = concentration, w = wintering (for plant and non-migratory species use permanent)
- **Unit:** i = individuals, p = pairs or other units according to the Standard list of population units and codes in accordance with Article 12 and 17 reporting (see [reference portal](#))
- **Abundance categories (Cat.):** C = common, R = rare, V = very rare, P = present - to fill if data are deficient (DD) or in addition to population size information
- **Data quality:** G = 'Good' (e.g. based on surveys); M = 'Moderate' (e.g. based on partial data with some extrapolation); P = 'Poor' (e.g. rough estimation); VP = 'Very poor' (use this category only, if not even a rough estimation of the population size can be made, in this case the fields for population size can remain empty, but the field "Abundance categories" has to be filled in)

### 3.3 Other important species of flora and fauna (optional)

Species				Population in the site				Motivation						
Group	CODE	Scientific Name	S	NP	Size		Unit	Cat.	Species Annex		Other categories			
					Min	Max		C R V P	IV	V	A	B	C	D
P		<a href="#">Ampelodesmos mauritanicus</a>						R						X
P		<a href="#">Anacamptis pyramidalis</a>						C					X	
P		<a href="#">Anemone trifolia brevidentata</a>						R				X		
P		<a href="#">Aquilegia vulgaris</a>						P						X
P		<a href="#">Arabis alpina caucasica</a>						V						X
I		<a href="#">Argna buplicata buplicata</a>						P						X
P		<a href="#">Argyrobolium zanonii</a>						V						X
I		<a href="#">Arion franciscoi</a>						R				X		
P		<a href="#">Asplenium billotii</a>						R						X
P		<a href="#">Asplenium ruta-muraria dolomiticum</a>						C						X
P		<a href="#">Biscutella cichoriifolia</a>						V						X
P		<a href="#">Brassica oleracea ssp. robertiana</a>						R				X		
I		<a href="#">Bryaxis italicus</a>						C				X		
A		<a href="#">Bufo bufo</a>						C					X	
P		<a href="#">Buphthalmum salicifolium</a>						V						X
P		<a href="#">Campanula medium</a>						R				X		
P		<a href="#">Centaurea apolepa ssp. lunensis</a>						C				X		
P		<a href="#">Centaurea cineraria ssp. veneris</a>						V				X		
P		<a href="#">Centaurea veneris</a>						V				X		
P		<a href="#">Cephalanthera longifolia</a>						R					X	
P		<a href="#">Cephalanthera rubra</a>						R					X	
I		<a href="#">Charaxes jasius</a>						R			X			
P		<a href="#">Cheilanthes acrosticha</a>						V						X
P		<a href="#">Cheilanthes maderensis</a>						P						X
I		<a href="#">Cochlodina bidens</a>						P				X		
R	1284	<a href="#">Coluber viridiflavus</a>						C	X					
P		<a href="#">Crocus biflorus</a>						V						X
P		<a href="#">Dactylorhiza maculata</a>						R					X	
P		<a href="#">Dactylorhiza sambucina</a>						R					X	
P		<a href="#">Daphne laureola</a>						C						X
P		<a href="#">Digitalis lutea</a>						R						X
P		<a href="#">Dryopteris tyrrhena</a>						R				X		
R	1281	<a href="#">Elaphe longissima</a>						C	X					
P		<a href="#">Erythronium dens-canis</a>						V						X
P		<a href="#">Euphorbia dendroides</a>						R						X
P		<a href="#">Festuca veneris</a>						V				X		

P	1866	<a href="#">Galanthus nivalis</a>						V		X				
P		<a href="#">Galium scabrum</a>						V						X
P		<a href="#">Gentiana ciliata</a>						V						X
I		<a href="#">Geostiba ligurica poggiana</a>						R				X		
P		<a href="#">Globularia incanescens</a>						V				X		
I		<a href="#">Gonepteryx cleopatra</a>						P						X
P		<a href="#">Hypericum androsaemum</a>						V						X
M	5365	<a href="#">Hypsugo savii</a>						P	X					
I		<a href="#">Islamia piristoma</a>						P				X		
P		<a href="#">Lamiastrum galeobdolon</a>						P						X
P		<a href="#">Leucojum vernum</a>						V						X
P		<a href="#">Lilium bulbiferum ssp. croceum</a>						V						X
I		<a href="#">Limax sp. 1</a>						P				X		
P		<a href="#">Limodorum abortivum</a>						P					X	
P		<a href="#">LIMODORUM ABORTIVUM (L.) SWARTZ</a>						C					X	
P		<a href="#">Listera ovata</a>						P					X	
P		<a href="#">LISTERA OVATA (L.) R. BR.</a>						R					X	
P		<a href="#">Lobaria pulmonaria</a>						P						X
B		<a href="#">Lophophanes cristatus</a>						P						X
P		<a href="#">Luzula pedemontana</a>						C				X		
P		<a href="#">Neottia nidus-avis</a>						C					X	
M	1312	<a href="#">Nyctalus noctula</a>						P	X					
P		<a href="#">Omphalodes verna</a>						V						X
I		<a href="#">Opatrum sculpturatum</a>						R				X		
P		<a href="#">Ophrys arachnitiformis</a>						V					X	
P		<a href="#">Ophrys fuciflora</a>						C					X	
P		<a href="#">Ophrys sphecodes</a>						C					X	
P		<a href="#">Orchis papilionacea</a>						R					X	
P		<a href="#">Orchis provincialis</a>						V						X
I		<a href="#">Parabathyscia viti</a>						R				X		
P		<a href="#">Phagnalon sordidum</a>						V						X
M	2016	<a href="#">Pipistrellus kuhlii</a>						P	X					
P		<a href="#">Platanthera bifolia</a>						R						X
R	1256	<a href="#">Podarcis muralis</a>						P	X					
P		<a href="#">Populus nigra</a>						V						X
I		<a href="#">Pterostichus phaeopus</a>						R				X		
P		<a href="#">Pulmonaria apennina</a>						P				X		
P		<a href="#">Quercus suber</a>						R						X
I		<a href="#">Retinella olivetorum olivetorum</a>						P				X		
I		<a href="#">Roncus caprai</a>						R				X		
P		<a href="#">Rosmarinus officinalis</a>						V						X
P		<a href="#">Ruscus hypoglossum</a>						V						X
A		<a href="#">Salamandra salamandra</a>						C					X	
P		<a href="#">Scilla bifolia</a>						V						X
P		<a href="#">SERAPIAS CORDIGERA</a>						R					X	
P		<a href="#">SERAPIAS NEGLECTA DE NOT.</a>						R					X	
P		<a href="#">Serapias parviflora</a>						P					X	
P		<a href="#">SERAPIAS PARVIFLORA PARL.</a>						V						X
I		<a href="#">Solatopupa juliana</a>						P				X		
I		<a href="#">Solatopupa pallida</a>						R				X		
P		<a href="#">Spiranthes spiralis</a>						R					X	
P		<a href="#">Staelina dubia</a>						P						X
P		<a href="#">Staelina dubia</a>						V						X
I		<a href="#">Striolata striolata</a>						V				X		
M	1333	<a href="#">Tadarida teniotis</a>						P	X					

P		<a href="#">Ulex europaeus</a>						R						X
---	--	--------------------------------	--	--	--	--	--	---	--	--	--	--	--	---

- **Group:** A = Amphibians, B = Birds, F = Fish, Fu = Fungi, I = Invertebrates, L = Lichens, M = Mammals, P = Plants, R = Reptiles
- **CODE:** for Birds, Annex IV and V species the code as provided in the reference portal should be used in addition to the scientific name
- **S:** in case that the data on species are sensitive and therefore have to be blocked for any public access enter: yes
- **NP:** in case that a species is no longer present in the site enter: x (optional)
- **Unit:** i = individuals, p = pairs or other units according to the standard list of population units and codes in accordance with Article 12 and 17 reporting, (see [reference portal](#))
- **Cat.:** Abundance categories: C = common, R = rare, V = very rare, P = present
- **Motivation categories:** **IV, V:** Annex Species (Habitats Directive), **A:** National Red List data; **B:** Endemics; **C:** International Conventions; **D:** other reasons

## 4. SITE DESCRIPTION

[Back to top](#)

### 4.1 General site character

Habitat class	% Cover
N18	4.0
N09	10.0
N06	1.0
N15	2.0
N23	1.0
N17	20.0
N08	20.0
N21	5.0
N22	5.0
N05	1.0
N16	25.0
N19	6.0
<b>Total Habitat Cover</b>	<b>100</b>

### Other Site Characteristics

L'area comprende il promontorio prospiciente l'isola Palmaria costituito da una serie di rilievi montuosi di 600-700 s.l.m. Il tratto di costa da Riomaggiore a Portovenere è costituito da piccoli promontori rocciosi a costa bassa e da insenature con spiagge. L'intera area è percorsa da numerosi rii. Il substrato geologico è costituito da arenarie torbiditiche passanti verso l'alto a siltiti e marne cui seguono la maiolica, radiolariti, marne posidonia, rosso ammonitico, calcari a liste di selce e flysch arenaceo. Parte del sito era inclusa nell'Area Protetta "Cinque Terre" o nella sua Area Cornice, recentemente comprese nel Parco Naturale Regionale delle "Cinque Terre". In alcuni punti esistono vincoli militari che incidono positivamente sulla conservazione ambientale. Parte della zona marina è stata individuata come possibile Riserva Naturale Marina.

### 4.2 Quality and importance

L'area comprende zone ad alta naturalità accanto a piccole aree intensamente coltivate a vite su terrazzamenti che rappresentano elementi importanti per il paesaggio e la biodiversità. Di notevole interesse la presenza di grotte che ospitano colonie di chiroterri. In questo sito diverse specie vegetali si trovano al limite settentrionale o nord-orientale della loro distribuzione; altre sono in stazioni eccezionalmente vicine al mare. Nella parte settentrionale, in corrispondenza di fenomeni carsici, si notano interessanti esempi di inversione altitudinale della vegetazione. Il sito ospita inoltre le seguenti specie proposte dalla Regione Liguria (a causa del loro interesse biogeografico, per la loro rarità o perchè indicatrici di qualità ambientale) per l'inserimento nell'allegato II della direttiva 92/43 CEE: *Centaurea veneris*; *Charaxes jasius*; *Globularia incanescens* (endemica, 5000 esemplari nel mondo). Sono presenti specie ed habitat prioritari, vari taxa protetti ai sensi di direttive/convenzioni internazionali e numerosi endemiti di particolare rilevanza.

### 4.3 Threats, pressures and activities with impacts on the site

The most important impacts and activities with high effect on the site

Negative Impacts			
Rank	Threats and pressures [code]	Pollution (optional) [code]	inside/outside [i o b]
M	J02.06		-
M	F03.01.01		-
M	H02		-
M	A08		-
M	J01.01		-
M	I02		-
M	H01		-
M	J03.02		-
M	K03.02		-
M	K02		-
M	G01.04		-
M	G05		-
M	E03		-
M	B02		-
M	J03.01		-
M	D02.01.01		-
M	E01.01		-
M	A04.03		-
M	D01		-
M	F04		-

Positive Impacts			
Rank	Activities, management [code]	Pollution (optional) [code]	inside /outside [i o b]

Rank: H = high, M = medium, L = low

Pollution: N = Nitrogen input, P = Phosphor/Phosphate input, A = Acid input/acidification,

T = toxic inorganic chemicals, O = toxic organic chemicals, X = Mixed pollutions

i = inside, o = outside, b = both

#### 4.4 Ownership (optional)

#### 4.5 Documentation

- AA.VV. - 1979 - Quindici parchi per la Liguria. Studio Cartografico Italiano. Regione Liguria, Genova, 160 pp.- Braga G., Casnedi R., Galbiati B., Marchetti G. - 1973 - Carta geologica della Val di Vara (Appennino di La Spezia). Atti Ist. Geol. Univ. di Pavia, 23.- Capellini G. - 1865 - Fossili infraliassici dei dintorni del Golfo della Spezia. Mem. R. Acc. Sc. Ist. Bologna, 5: 413-486.- Ciarapica G. - 1985 - Il Trias dell'Unità di Porto Venere e confronti con le coeve successioni apuane e toscane: revisione degli «Strati a R. contorta» Auctt. dell'Appennino settentrionale. Mem. Soc. Geol. Ital., 30: 135-151.- Ciarapica G. - 1985 - Il Trias dell'unità di Portovenere. Guida all'escursione del Convegno "G. Capellini", 21-34.- Ciarapica G. & Passeri L. - 1987 - Rocce e fossili del Mesozoico dell'area Spezzina. In "La Terra racconta". Amm. Prov. La Spezia, Acc. Lunigiana "G. Capellini", Cassa Risparmio La Spezia. Grafiche Lunensi, Sarzana (SP): 118-122. - Cortesogno L., Palenzona A. - 1986 - Le nostre rocce. Le rocce della Liguria riconoscerle e capirne la storia. Sagep Ed., Genova: 173 pp.- Girani A. - 1989 - Guida alle Cinque Terre. Sagep Ed., Genova, 160 pp.- Piccioli R. - 1987 - I ritrovamenti fossili del versante occidentale del Golfo della Spezia. Da "La Terra racconta" mostra paleontologica. La Spezia 31 ottobre-15 dicembre 1987, Amm. Prov. La Spezia, Acc. Lunigianese «G. Capellini», Cassa Risparmio La Spezia. Grafiche Lunensi, Sarzana (SP): 147-148.- Rovereto G. - 1939 - Liguria geologica. Mem. Soc. Geol. It., 2: 743.- Terranova R. - 1969 - La geologia marina e le coste delle Cinque Terre. Argomenti, anno 5°, 3: 142-156.- Terranova R. - 1969 - Elementi di geologia delle Cinque Terre e delle zone limitrofe. Argomenti, anno 5°, 3: 133-141.- Venturi F. - 1985 - Ammoniti hettangiani della Collezione Capellini provenienti dal territorio della Spezia. Mem. Soc. Geol. Ital., 30: 153-158.- Zaccagna D. - 1935 - La geologia del Golfo della Spezia. Mem. Acc. Lunig. Sc., 16: 63-90.

### 5. SITE PROTECTION STATUS (optional)

[Back to top](#)

#### 5.1 Designation types at national and regional level:

Code	Cover [%]	Code	Cover [%]	Code	Cover [%]
IT11	98.0	IT04	19.0	IT13	
IT01	3.0				

#### 5.2 Relation of the described site with other sites:

#### 5.3 Site designation (optional)

### 6. SITE MANAGEMENT

[Back to top](#)

#### 6.1 Body(ies) responsible for the site management:

Organisation:	COMUNE PORTOVENERE - Ufficio del Parco
Address:	Via Garibaldi, 9 19025 - PORTOVENERE (SP)
Email:	ufficioparco@parconaturaleportovenere.it
Organisation:	ENTE PARCO NAZIONALE CINQUE TERRE
Address:	Piazza Rio finale, 26 - 19017 RIOMAGGIORE (SP)
Email:	info@parconazionale5terre.it

#### 6.2 Management Plan(s):

An actual management plan does exist:

<input type="checkbox"/>	Yes
<input type="checkbox"/>	No, but in preparation
<input checked="" type="checkbox"/>	No

#### 6.3 Conservation measures (optional)

### 7. MAP OF THE SITES

[Back to top](#)

INSPIRE ID:

Map delivered as PDF in electronic format (optional)

Yes  No

Reference(s) to the original map used for the digitalisation of the electronic boundaries (optional).

155 III SO, 163 IV N 1:25000 Gauss-Boaga; CARTA DEGLI HABITAT; CORINE LANDCOVER III







## 2.4 Sitelength [km]:

0.0

## 2.5 Administrative region code and name

NUTS level 2 code

Region Name

ITC3

Liguria

## 2.6 Biogeographical Region(s)

Mediterranean (100.0  
%)

## 3. ECOLOGICAL INFORMATION

[Back to top](#)

## 3.1 Habitat types present on the site and assessment for them

Annex I Habitat types						Site assessment			
Code	PF	NP	Cover [ha]	Cave [number]	Data quality	A B C D	A B C		
						Representativity	Relative Surface	Conservation	Global
1110			1.52		M	D			
1120			2.04		M	B	C	B	B
1170			1.64		P	A	C	B	A
1210			1.64		P	C	C	C	B
1240			8.2		P	B	C	B	A
1310			1.64		P	C	C	C	C
5320			1.64		P	C	B	B	C
5330			24.6		P	B	B	C	B
6210			1.64		P	C	C	C	C
6220			1.64		P	C	C	C	C
8210			1.64		P	C	C	B	B
8240			1.64		P	B	C	C	B
8310			0.001	16	P	A	C	A	A
8330			0.001	9	P	A	B	A	A
9340			32.8		P	C	C	C	C
9540			29.52		P	B	C	C	B

- **PF:** for the habitat types that can have a non-priority as well as a priority form (6210, 7130, 9430) enter "X" in the column PF to indicate the priority form.
- **NP:** in case that a habitat type no longer exists in the site enter: x (optional)
- **Cover:** decimal values can be entered
- **Caves:** for habitat types 8310, 8330 (caves) enter the number of caves if estimated surface is not available.
- **Data quality:** G = 'Good' (e.g. based on surveys); M = 'Moderate' (e.g. based on partial data with some extrapolation); P = 'Poor' (e.g. rough estimation)

## 3.2 Species referred to in Article 4 of Directive 2009/147/EC and listed in Annex II of Directive 92/43/EEC and site evaluation for them

Species					Population in the site					Site assessment	
G	Code	Scientific Name	S	NP	T	Size	Unit	Cat.	D. qual.	A B C D	A B C

					Min	Max				Pop.	Con.	Iso.	Glo.	
B	A324	<a href="#">Aegithalos caudatus</a>			r				P	DD	D			
B	A226	<a href="#">Apus apus</a>			r				P	DD	D			
B	A227	<a href="#">Apus pallidus</a>			r				P	DD	C	B	B	C
B	A218	<a href="#">Athene noctua</a>			r				P	DD	D			
B	A224	<a href="#">Caprimulgus europaeus</a>			p				P	DD	D			
B	A364	<a href="#">Carduelis carduelis</a>			p				P	DD	D			
B	A479	<a href="#">Cecropis daurica</a>			p				P	DD	D			
B	A335	<a href="#">Certhia brachydactyla</a>			w				P	DD	D			
B	A363	<a href="#">Chloris chloris</a>			p				P	DD	D			
B	A208	<a href="#">Columba palumbus</a>			c				P	DD	D			
B	A350	<a href="#">Corvus corax</a>			c				P	DD	D			
B	A349	<a href="#">Corvus corone</a>			c				P	DD	D			
B	A212	<a href="#">Cuculus canorus</a>			c				P	DD	D			
B	A480	<a href="#">Cyanecula svecica</a>			p				R	DD	D			
B	A483	<a href="#">Cyanistes caeruleus</a>			c				P	DD	D			
B	A738	<a href="#">Delichon urbicum</a>			c				P	DD	D			
B	A026	<a href="#">Egretta garzetta</a>			p				C	DD	D			
B	A378	<a href="#">Emberiza cia</a>			c				P	DD	D			
B	A377	<a href="#">Emberiza cirius</a>			c				P	DD	D			
B	A379	<a href="#">Emberiza hortulana</a>			p				P	DD	D			
B	A269	<a href="#">Erithacus rubecula</a>			w				P	DD	D			
B	A103	<a href="#">Falco peregrinus</a>			p				V	DD	C	B	B	B
B	A096	<a href="#">Falco tinnunculus</a>			p				P	DD	D			
B	A321	<a href="#">Ficedula albicollis</a>			p				P	DD	D			
B	A322	<a href="#">Ficedula hypoleuca</a>			c				P	DD	D			
B	A359	<a href="#">Fringilla coelebs</a>			p				P	DD	D			
B	A001	<a href="#">Gavia stellata</a>			w				P	DD	D			
B	A300	<a href="#">Hippolais polyglotta</a>			c				P	DD	D			
B	A251	<a href="#">Hirundo rustica</a>			r				P	DD	D			
B	A233	<a href="#">Jynx torquilla</a>			r				P	DD	D			
B	A338	<a href="#">Lanius collurio</a>			p				P	DD	D			
B	A341	<a href="#">Lanius senator</a>			c				P	DD	D			
B	A184	<a href="#">Larus argentatus</a>			p				P	DD	D			
B	A179	<a href="#">Larus ridibundus</a>			w				P	DD	D			
B	A271	<a href="#">Luscinia megarhynchos</a>			r				P	DD	D			
B	A281	<a href="#">Monticola solitarius</a>			p				P	DD	C	B	C	C
B	A319	<a href="#">Muscicapa striata</a>			r				P	DD	D			
B	A277	<a href="#">Oenanthe oenanthe</a>			c				P	DD	D			
B	A337	<a href="#">Oriolus oriolus</a>			c				P	DD	D			
B	A214	<a href="#">Otus scops</a>			r				P	DD	C	B	C	C
B	A330	<a href="#">Parus major</a>			r				P	DD	D			
B	A620	<a href="#">Passer domesticus</a>			p				P	DD	D			
B	A392	<a href="#">Phalacrocorax aristotelis desmarestii</a>			w				P	DD	D			
B	A391	<a href="#">Phalacrocorax carbo sinensis</a>			p				C	DD	D			

B	A273	<a href="#">Phoenicurus ochruros</a>			w				P	DD	D				
B	A274	<a href="#">Phoenicurus phoenicurus</a>			c				P	DD	D				
B	A499	<a href="#">Phylloscopus bonelli</a>			c				P	DD	D				
B	A572	<a href="#">Phylloscopus collybita</a>			p				P	DD	D				
B	A314	<a href="#">Phylloscopus sibilatrix</a>			c				P	DD	D				
B	A316	<a href="#">Phylloscopus trochilus</a>			w				P	DD	D				
B	A267	<a href="#">Prunella collaris</a>			w				P	DD	D				
B	A318	<a href="#">Regulus ignicapilla</a>			c				P	DD	D				
B	A317	<a href="#">Regulus regulus</a>			c				P	DD	D				
B	A275	<a href="#">Saxicola rubetra</a>			c				P	DD	D				
B	A155	<a href="#">Scolopax rusticola</a>			c				P	DD	D				
B	A332	<a href="#">Sitta europaea</a>			r				P	DD	D				
B	A219	<a href="#">Strix aluco</a>			c				P	DD	D				
B	A311	<a href="#">Sylvia atricapilla</a>			p				P	DD	D				
B	A310	<a href="#">Sylvia borin</a>			c				P	DD	D				
B	A304	<a href="#">Sylvia cantillans</a>			c				P	DD	D				
B	A309	<a href="#">Sylvia communis</a>			c				P	DD	D				
B	A570	<a href="#">Sylvia hortensis</a>			c				P	DD	D				
B	A305	<a href="#">Sylvia melanocephala</a>			p				P	DD	D				
B	A302	<a href="#">Sylvia undata</a>			w				P	DD	C	B	C	C	
B	A863	<a href="#">Thalasseus sandvicensis</a>			w				P	DD	D				
B	A333	<a href="#">Tichodroma muraria</a>			w				P	DD	D				
B	A265	<a href="#">Troglodytes troglodytes</a>			w				P	DD	D				
B	A283	<a href="#">Turdus merula</a>			p				P	DD	D				
B	A285	<a href="#">Turdus philomelos</a>			w				P	DD	D				
B	A213	<a href="#">Tyto alba</a>			r				P	DD	D				
B	A232	<a href="#">Upupa epops</a>			c				P	DD	D				

- **Group:** A = Amphibians, B = Birds, F = Fish, I = Invertebrates, M = Mammals, P = Plants, R = Reptiles
- **S:** in case that the data on species are sensitive and therefore have to be blocked for any public access enter: yes
- **NP:** in case that a species is no longer present in the site enter: x (optional)
- **Type:** p = permanent, r = reproducing, c = concentration, w = wintering (for plant and non-migratory species use permanent)
- **Unit:** i = individuals, p = pairs or other units according to the Standard list of population units and codes in accordance with Article 12 and 17 reporting (see [reference portal](#))
- **Abundance categories (Cat.):** C = common, R = rare, V = very rare, P = present - to fill if data are deficient (DD) or in addition to population size information
- **Data quality:** G = 'Good' (e.g. based on surveys); M = 'Moderate' (e.g. based on partial data with some extrapolation); P = 'Poor' (e.g. rough estimation); VP = 'Very poor' (use this category only, if not even a rough estimation of the population size can be made, in this case the fields for population size can remain empty, but the field "Abundance categories" has to be filled in)

### 3.3 Other important species of flora and fauna (optional)

Species					Population in the site				Motivation					
Group	CODE	Scientific Name	S	NP	Size		Unit	Cat.	Species Annex		Other categories			
					Min	Max		C R V P	IV	V	A	B	C	D
P		<a href="#">Aceras anthropophorum</a>						R					X	
P		<a href="#">Ampelodesmos mauritanicus</a>						C						X
P		<a href="#">Anacamptis pyramidalis</a>						R					X	

I		<a href="#">Argna biplicata biplicata</a>						P					X		
P		<a href="#">Brassica oleracea ssp. robertiana</a>						R							X
P		<a href="#">Campanula medium</a>						P							X
P		<a href="#">Centaurea apiolepa ssp. lunensis</a>						P				X			
P		<a href="#">Centaurea veneris</a>						V				X			
P		<a href="#">Cephalanthera longifolia</a>						V					X		
P		<a href="#">Cistus incanus</a>						R							X
I		<a href="#">Danacea ligurica</a>						V				X			
P		<a href="#">Epipactis microphylla</a>						R					X		
P		<a href="#">Epipactis palustris</a>						V					X		
I		<a href="#">Eunicella cavolinii</a>						P							X
I		<a href="#">Eunicella singularis</a>						P							X
P		<a href="#">Euphorbia dendroides</a>						R							X
I		<a href="#">Gonepteryx cleopatra</a>						P							X
R		<a href="#">Hemidactylus turcicus</a>						P							X
R	5670	<a href="#">Hierophis viridiflavus</a>						P	X						
P		<a href="#">LIMODORUM ABORTIVUM (L.) SWARTZ</a>						R						X	
P		<a href="#">LISTERA OVATA (L.) R. BR.</a>						R						X	
I		<a href="#">Opatrum sculpturatum</a>						R				X			
P		<a href="#">Ophrys apifera</a>						R						X	
P		<a href="#">Ophrys bombyliflora</a>						R						X	
P		<a href="#">Ophrys fuciflora</a>						R						X	
P		<a href="#">Ophrys lutea</a>						R						X	
P		<a href="#">Ophrys sphecodes</a>						R						X	
P		<a href="#">Orchis coriophora</a>						R						X	
P		<a href="#">Orchis morio</a>						R						X	
P		<a href="#">Orchis papilionacea</a>						R						X	
P		<a href="#">Orchis provincialis</a>						R							X
P		<a href="#">Pinus pinea</a>						V							X
M	2016	<a href="#">Pipistrellus kuhlii</a>						P	X						
M	1326	<a href="#">Plecotus auritus</a>						P	X						
R	1256	<a href="#">Podarcis muralis</a>						P	X						
I		<a href="#">Roncus caprai</a>						R				X			
P		<a href="#">SERAPIAS CORDIGERA L.</a>						R						X	
P		<a href="#">SERAPIAS LINGUA L.</a>						R						X	
P		<a href="#">Serapias neglecta</a>						P				X			
I		<a href="#">Solatopupa juliana</a>						P				X			
I		<a href="#">Solatopupa pallida</a>						R				X			
P		<a href="#">Spiranthes spiralis</a>						R						X	
P		<a href="#">Staelina dubia</a>						P							X
P		<a href="#">Sternbergia lutea</a>						V						X	

I		<a href="#">Striolata striolata</a>						V				X		
F		<a href="#">Symphodus mediterraneus</a>						P						X
F		<a href="#">Symphodus roissali</a>						P						X
F		<a href="#">Symphodus tinca</a>						P						X
M	1333	<a href="#">Tadarida teniotis</a>						P	X					
R		<a href="#">Tatentola mauritanica</a>						P						X
R	6091	<a href="#">Zamenis longissimus</a>						P	X					

- **Group:** A = Amphibians, B = Birds, F = Fish, Fu = Fungi, I = Invertebrates, L = Lichens, M = Mammals, P = Plants, R = Reptiles
- **CODE:** for Birds, Annex IV and V species the code as provided in the reference portal should be used in addition to the scientific name
- **S:** in case that the data on species are sensitive and therefore have to be blocked for any public access enter: yes
- **NP:** in case that a species is no longer present in the site enter: x (optional)
- **Unit:** i = individuals, p = pairs or other units according to the standard list of population units and codes in accordance with Article 12 and 17 reporting, (see [reference portal](#))
- **Cat.:** Abundance categories: C = common, R = rare, V = very rare, P = present
- **Motivation categories:** IV, V: Annex Species (Habitats Directive), A: National Red List data; B: Endemics; C: International Conventions; D: other reasons

## 4. SITE DESCRIPTION

### 4.1 General site character

[Back to top](#)

Habitat class	% Cover
N18	2.0
N08	30.0
N23	7.0
N22	5.0
N21	10.0
N17	15.0
N09	25.0
N16	3.0
N05	1.0
N19	2.0
<b>Total Habitat Cover</b>	<b>100</b>

### Other Site Characteristics

L'isola è costituita da calcari dolomitici alternati a portoro e da calcari compatti e marnosi. La costa a SE è bassa e rocciosa; a N spiagge sabbiose; a O presenta cavità di importanza paesaggistica e speleologica (grotta fossilifera dei Colombi 80LI/SP, la grotta azzurra e altre grotte marine. Il sito, già compreso nell'Area Protetta "Cinque Terre" ed includente una Riserva Parziale, rientra ora nel Parco Naturale Regionale di Portovenere.

### 4.2 Quality and importance

L'isola comprende habitat talora degradati da incendi, ma suscettibili di miglioramenti. In buon stato di conservazione sono invece gli habitat rupestri delle falesie che ospitano, fra le altre, *Centaurea veneris*, endemismo a distribuzione estremamente ridotta, proposto dalla Regione Liguria per l'inclusione nell'All. II della Direttiva. Lungo la costa sono presenti alcune grotte marine, mentre sul lato nord dell'isola è presente una piccola prateria di *Posidonia oceanica*, habitat prioritario ai sensi della Direttiva 92/43, relitto di una formazione un tempo più estesa. Diverse entità vegetali si trovano al limite nord-orientale della loro distribuzione. Di notevole importanza è la ricca presenza di specie ornitiche di interesse comunitario, talune delle quali rare a livello regionale o nazionale. Importanti sono anche le grotte con depositi fossiliferi. Sono presenti habitat prioritari, numerosi taxa protetti ai sensi di direttive/convenzioni internazionali ed endemiti di rilievo.

### 4.3 Threats, pressures and activities with impacts on the site

The most important impacts and activities with high effect on the site

Negative Impacts			
Rank	Threats and pressures	Pollution (optional)	inside/outside

Positive Impacts			
Rank	Activities, management	Pollution (optional)	inside/outside

	[code]	[code]	[i o b]
M	G01		-
M	G05		-
M	E01.01		-
M	D01		-
M	B02.03		-
M	K03.02		-
M	E03		-
M	I01		-
M	D02.01.01		-
M	H01.08		-
M	I02		-
M	K02		-
M	J03		-
M	A04.03		-
M	J01.01		-

	[code]	[code]	[i o b]
--	--------	--------	---------

Rank: H = high, M = medium, L = low

Pollution: N = Nitrogen input, P = Phosphor/Phosphate input, A = Acid input/acidification,

T = toxic inorganic chemicals, O = toxic organic chemicals, X = Mixed pollutions

i = inside, o = outside, b = both

#### 4.4 Ownership (optional)

#### 4.5 Documentation

- Bernardini E. - 1985 - Liguria. Itinerari archeologici. Newton Compton Ed., Roma: 224 pp. - Capellini G. - 1865 - Fossili infraliassici dei dintorni del Golfo della Spezia. Mem. R. Acc. Sc. Ist. Bologna, 5: 413-486. - Capellini G. - 1867 - Fossili infraliassici dei dintorni del Golfo della Spezia. Mem. R. Acc. Sc. Ist. Bologna, 7: 3-24. - Capellini G. - 1873 - Grotta dei Colombi à l'île Palmaria, golfe de la Spezia, station de cannibales à l'époque de la Madaleine. Congr. Int. Anthropol. Archéol. Préhист., C. R. (5° sess. Bologne, 1871): 392-416. - Capellini G. - 1895 - Rubble-drift e Breccia ossifera nella Isola Palmaria e nei dintorni del Golfo di Spezia. Mem. R. Acc. Sc. Ist. Bologna, 5: 245-255. - Carazzi D. - 1890 - La Grotta dei Colombi all'Isola Palmaria, , Ann. Mus. St. Nat. "G. Doria" Genova, 9 (29): 33-59. - Ciarapica G., Passeri L. - 1980 - La Litostratigrafia della serie triassica del promontorio occidentale del Golfo di La Spezia. Mem. Soc. Geol. It., 21: 51-61. - Ciarapica G. - 1985 - Il Trias dell'unità di Porto Venere. Guida all'escursione del Convegno "G. Capellini", 21-34. -Ciarapica G. - 1985 - Il Trias dell'Unità di Porto Venere e confronti con le coeve successioni apuane e toscane: revisione degli "Strati a R. contorta" Auctt. dell'Appennino settentrionale. Mem. Soc. Geol. Ital., 30: 135-151. - Ciarapica G. & Passeri L. - 1987 - Rocce e fossili del Mesozoico dell'area Spezzina. In "La Terra racconta". Amm. Prov. La Spezia, Acc. Lunigiana "G. Capellini", Cassa Risparmio La Spezia. Grafiche Lunensi, Sarzana (SP): 118-122. - Donati P., Terranova R., Viviani A. - 1990 - Guida al Parco Monte Serro Punta Mesco (Monterosso, Levanto, Bonassola, Framura, Deiva, Carro, Carrodano). Sagep Ed., Genova, 125 pp. - Girani A. - 1989 - Guida alle Cinque Terre. Sagep Ed., Genova, 160 pp. - Regalia E. - 1894 - Sulla fauna della Grotta dei Colombi. (Is. Palmaria, Spezia). Arch. Antr. Etn., Firenze, 22 (3): 1-112. - Rovereto G. - 1939 - Liguria geologica. Mem. Soc. Geol. It., 2: 743. - Zaccagna D. - 1935 - La geologia del Golfo della Spezia. Mem. Acc. Lunig. Sc., 16: 63-90. Diviacco G. e Coppo S. - 2006 - Atlante degli habitat marini della Liguria. Regione Liguria. - DIP.TE.RIS. Università di Genova - 2003 - Indagine ambientale sull'area costiera delle Isole Spezzine. - Diviacco G. - 2003 - Analisi dell'ambiente naturale e d antropico della zona costiera delle isole Palmaria, Tino e Tinetto (SP) finalizzata al piano dell'area marina del parco di Porto Venere - Prima parte (Fase conoscitiva).

## 5. SITE PROTECTION STATUS (optional)

### 5.1 Designation types at national and regional level:

[Back to top](#)

Code	Cover [%]	Code	Cover [%]	Code	Cover [%]
IT04	100.0				

### 5.2 Relation of the described site with other sites:

### 5.3 Site designation (optional)

## 6. SITE MANAGEMENT

### 6.1 Body(ies) responsible for the site management:

[Back to top](#)

Organisation:	Regione Liguria - Dipartimento Ambiente - Servizio Parchi, Aree Protette e Biodiversità Via Fieschi, 15 - 16121 Genovaparchi@regione.liguria.it
Address:	

Email:

Organisation: COMUNE PORTOVENERE - Ufficio del Parco

Address: Via Garibaldi, 9 19025 - PORTOVENERE (SP)

Email: ufficioparco@parconaturaleportovenere.it

## 6.2 Management Plan(s):

An actual management plan does exist:

- Yes  
 No, but in preparation  
 No

## 6.3 Conservation measures (optional)

## 7. MAP OF THE SITES

[Back to top](#)

INSPIRE ID:

Map delivered as PDF in electronic format (optional)

- Yes  No

Reference(s) to the original map used for the digitalisation of the electronic boundaries (optional).

154 I SO 381092 1:25000 Gauss-Boaga; CARTA DEGLI HABITAT; CORINE LANDCOVER III



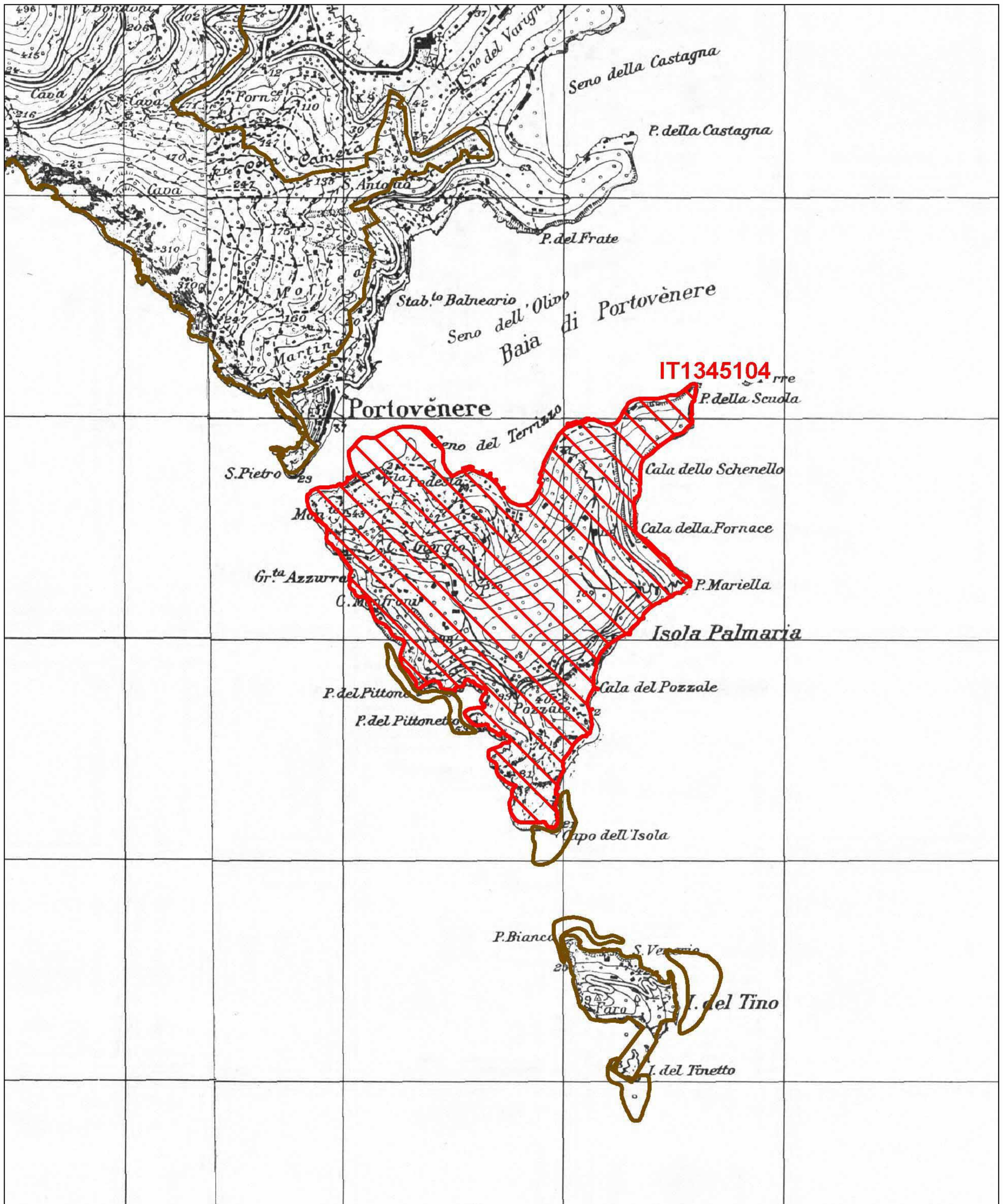


Regione: Liguria

Codice sito: IT1345104

Superficie (ha): 164

Denominazione: Isola Palmaria



Data di stampa: 06/12/2010

0 0.2 0.4 Km

Scala 1:25'000

**Legenda**

 sito IT1345104

 altri siti

Base cartografica: IGM 1:25'000





## 2.4 Sitelength [km]:

0.0

## 2.5 Administrative region code and name

NUTS level 2 code

Region Name

ITC3	Liguria
------	---------

## 2.6 Biogeographical Region(s)

Mediterranean (100.0  
%)

## 3. ECOLOGICAL INFORMATION

[Back to top](#)

## 3.1 Habitat types present on the site and assessment for them

Annex I Habitat types						Site assessment			
Code	PF	NP	Cover [ha]	Cave [number]	Data quality	A B C D	A B C		
						Representativity	Relative Surface	Conservation	Global
1120 <b>B</b>			1.14		P	B	C	B	B
1170 <b>B</b>			0.43		P	B	C	B	B
1210 <b>B</b>			0.43		P	B	C	B	B
1240 <b>B</b>			0.86		P	B	C	B	B
5320 <b>B</b>			0.43		P	C	B	B	B
5330 <b>B</b>			0.43		P	C	C	B	C
6210 <b>B</b>			0.43		P	C	C	C	C
6220 <b>B</b>			0.43		P	C	C	C	C
6420 <b>B</b>			0.43		P	C	C	C	C
6430 <b>B</b>			0.43		P	C	C	C	C
8210 <b>B</b>			2.15		P	C	C	B	B
9340 <b>B</b>			4.3		P	C	C	B	B
9540 <b>B</b>			10.75		P	B	C	B	B

- **PF:** for the habitat types that can have a non-priority as well as a priority form (6210, 7130, 9430) enter "X" in the column PF to indicate the priority form.
- **NP:** in case that a habitat type no longer exists in the site enter: x (optional)
- **Cover:** decimal values can be entered
- **Caves:** for habitat types 8310, 8330 (caves) enter the number of caves if estimated surface is not available.
- **Data quality:** G = 'Good' (e.g. based on surveys); M = 'Moderate' (e.g. based on partial data with some extrapolation); P = 'Poor' (e.g. rough estimation)

## 3.2 Species referred to in Article 4 of Directive 2009/147/EC and listed in Annex II of Directive 92/43/EEC and site evaluation for them

Species					Population in the site					Site assessment				
G	Code	Scientific Name	S	NP	T	Size		Unit	Cat.	D. qual.	A B C D	A B C		
						Min	Max				Pop.	Con.	Iso.	Glo.
B	A226	<a href="#">Apus apus</a>			c				P	DD	D			
B	A364	<a href="#">Carduelis carduelis</a>			p				P	DD	D			

B	A349	<a href="#">Corvus corone</a>			w				P	DD	D				
B	A212	<a href="#">Cuculus canorus</a>			c				P	DD	D				
B	A269	<a href="#">Erithacus rubecula</a>			w				P	DD	D				
B	A359	<a href="#">Fringilla coelebs</a>			w				P	DD	D				
B	A002	<a href="#">Gavia arctica</a>			w				P	DD	D				
B	A184	<a href="#">Larus argentatus</a>			w				P	DD	D				
B	A179	<a href="#">Larus ridibundus</a>			w				P	DD	D				
B	A271	<a href="#">Luscinia megarhynchos</a>			r				P	DD	D				
B	A281	<a href="#">Monticola solitarius</a>			p				P	DD	C	C	C	C	C
B	A214	<a href="#">Otus scops</a>			r				P	DD	C	C	C	C	C
B	A330	<a href="#">Parus major</a>			c				P	DD	D				
B	A620	<a href="#">Passer domesticus</a>			p				P	DD	D				
B	A392	<a href="#">Phalacrocorax aristotelis desmarestii</a>			w				P	DD	D				
B	A017	<a href="#">Phalacrocorax carbo</a>			w				P	DD	D				
B	A391	<a href="#">Phalacrocorax carbo sinensis</a>			w				P	DD	D				
B	A572	<a href="#">Phylloscopus collybita</a>			c				P	DD	D				
B	A318	<a href="#">Regulus ignicapilla</a>			c				P	DD	D				
B	A361	<a href="#">Serinus serinus</a>			r				P	DD	D				
B	A305	<a href="#">Sylvia melanocephala</a>			p				P	DD	D				
B	A863	<a href="#">Thalasseus sandvicensis</a>			w				P	DD	D				
B	A283	<a href="#">Turdus merula</a>			p				P	DD	D				

- **Group:** A = Amphibians, B = Birds, F = Fish, I = Invertebrates, M = Mammals, P = Plants, R = Reptiles
- **S:** in case that the data on species are sensitive and therefore have to be blocked for any public access enter: yes
- **NP:** in case that a species is no longer present in the site enter: x (optional)
- **Type:** p = permanent, r = reproducing, c = concentration, w = wintering (for plant and non-migratory species use permanent)
- **Unit:** i = individuals, p = pairs or other units according to the Standard list of population units and codes in accordance with Article 12 and 17 reporting (see [reference portal](#))
- **Abundance categories (Cat.):** C = common, R = rare, V = very rare, P = present - to fill if data are deficient (DD) or in addition to population size information
- **Data quality:** G = 'Good' (e.g. based on surveys); M = 'Moderate' (e.g. based on partial data with some extrapolation); P = 'Poor' (e.g. rough estimation); VP = 'Very poor' (use this category only, if not even a rough estimation of the population size can be made, in this case the fields for population size can remain empty, but the field "Abundance categories" has to be filled in)

### 3.3 Other important species of flora and fauna (optional)

Species			Population in the site					Motivation						
Group	CODE	Scientific Name	S	NP	Size		Unit	Cat.	Species Annex		Other categories			
					Min	Max		C R V P	IV	V	A	B	C	D
P		<a href="#">Ampelodesmos mauritanicus</a>						P						X
P		<a href="#">Campanula medium</a>						P						X
I		<a href="#">Gonepteryx cleopatra</a>						P						X
P		<a href="#">Pinus halepensis</a>						C						X
I		<a href="#">Polyommatus hispanus</a>						P						X
P	1849	<a href="#">Ruscus aculeatus</a>						P		X				
P		<a href="#">Teucrium flavum</a>						P						X

- **Group:** A = Amphibians, B = Birds, F = Fish, Fu = Fungi, I = Invertebrates, L = Lichens, M = Mammals, P = Plants, R = Reptiles
- **CODE:** for Birds, Annex IV and V species the code as provided in the reference portal should be used in addition to the scientific name

- **S:** in case that the data on species are sensitive and therefore have to be blocked for any public access enter: yes
- **NP:** in case that a species is no longer present in the site enter: x (optional)
- **Unit:** i = individuals, p = pairs or other units according to the standard list of population units and codes in accordance with Article 12 and 17 reporting, (see [reference portal](#))
- **Cat.:** Abundance categories: C = common, R = rare, V = very rare, P = present
- **Motivation categories:** **IV, V:** Annex Species (Habitats Directive), **A:** National Red List data; **B:** Endemics; **C:** International Conventions; **D:** other reasons

## 4. SITE DESCRIPTION

### 4.1 General site character

[Back to top](#)

Habitat class	% Cover
N16	5.0
N18	25.0
N09	1.0
N21	5.0
N17	25.0
N22	5.0
N05	3.0
N08	30.0
N10	1.0
<b>Total Habitat Cover</b>	<b>100</b>

### Other Site Characteristics

Zona litorale subpianeggiante con presenza di terrazzi. La costa è rocciosa e bassa ad eccezione della parte a sud ovest dove è presente una spiaggia. Sono presenti calcare cavernoso, dolomia alternata a portoro, scisti argillosi e calcari marnosi.

### 4.2 Quality and importance

Sito costiero con bosco di Quercus ilex in buon stato di conservazione e rupi costiere difficilmente accessibili. e relativamente poco disturbate. Notevole è l'interesse paesaggistico. Il sito ospita habitat prioritari e vari taxa protetti ai sensi di direttive/convenzioni internazionali.

### 4.3 Threats, pressures and activities with impacts on the site

The most important impacts and activities with high effect on the site

Negative Impacts			
Rank	Threats and pressures [code]	Pollution (optional) [code]	inside/outside [i o b]
M	E03		-
M	F03.01.01		-
M	A04.03		-
M	I02		-
M	G01		-
M	I01		-
M	J03		-
M	K02		-
M	B02.03		-
M	D01		-
M	J02		-
M	J01.01		-
M	H01		-
M	K03		-
M	E01.01		-

Positive Impacts			
Rank	Activities, management [code]	Pollution (optional) [code]	inside /outside [i o b]

Rank: H = high, M = medium, L = low  
Pollution: N = Nitrogen input, P = Phosphor/Phosphate input, A = Acid input/acidification,  
T = toxic inorganic chemicals, O = toxic organic chemicals, X = Mixed pollutions  
i = inside, o = outside, b = both

#### 4.4 Ownership (optional)

#### 4.5 Documentation

- Capellini G. - 1864 - Descrizione geologica del Golfo della Spezia e Val di Magra inferiore.- Capellini G. - 1902 - Note esplicative della carta geologica dei dintorni del Golfo della Spezia e Val di Magra inferiore.- Elter P., Federici P.R. - 1964 - Sulla presenza di terreni attribuibili al Trias medio nel promontorio orientale del Golfo di La Spezia. Boll. Soc. Geol. It., 83 (2): 395-404.- Issel A. - 1877 - Liguria geologica e preistorica, vol. I, II. Ed. Donath, Genova.- Passeri L. - 1985 - Il Trias dell'Unità di Punta Bianca. Mem. Soc. Geol. Ital., 30: 105-114.- Rau A., Tongiorgi M., Martini I. P. - 1985 - La successione di Punta Bianca: un esempio di rift abortivo nel Trias medio del dominio toscano. Mem. Soc. Geol. It., 30: 115-125.- Rozzi Mazza A. N. - 1987 - Ritrovamenti di età pleistocenica nella parte orientale del Golfo della Spezia.. Da "La Terra racconta", mostra paleontologica. Amm. Prov. La Spezia, Acc. Lunigianese "G. Capellini", Cassa Risparmio La Spezia, Grafiche Lunensi, Sarzana (SP): 149-150.- Zaccagna D. - 1935 - La geologia del Golfo della Spezia. Mem. Acc. Lunig. Sc., 16: 63-90.

### 5. SITE PROTECTION STATUS (optional)

#### 5.1 Designation types at national and regional level:

[Back to top](#)

Code	Cover [%]	Code	Cover [%]	Code	Cover [%]
IT11	100.0				

#### 5.2 Relation of the described site with other sites:

#### 5.3 Site designation (optional)

### 6. SITE MANAGEMENT

#### 6.1 Body(ies) responsible for the site management:

[Back to top](#)

Organisation:	ENTE PARCO DI MONTEMARCELLO MAGRA
Address:	Via A. Paci, 2 - 19038 SARZANA (SP)
Email:	info@parcomagra.it

#### 6.2 Management Plan(s):

An actual management plan does exist:

<input type="checkbox"/> Yes
<input type="checkbox"/> No, but in preparation
<input checked="" type="checkbox"/> No

#### 6.3 Conservation measures (optional)

### 7. MAP OF THE SITES

[Back to top](#)

INSPIRE ID:

Map delivered as PDF in electronic format (optional)

Yes  No

Reference(s) to the original map used for the digitalisation of the electronic boundaries (optional).



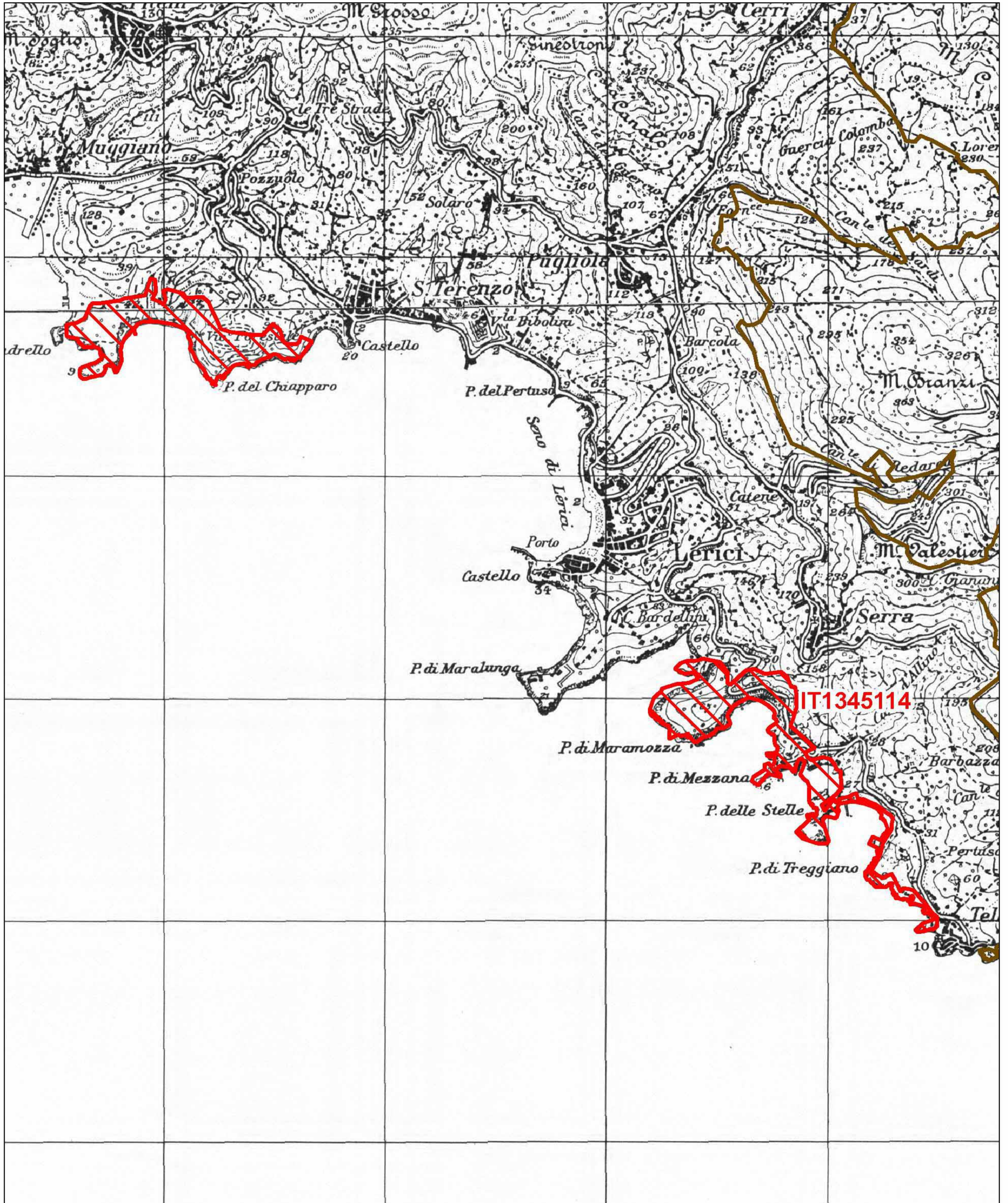


Regione: Liguria

Codice sito: IT1345114

Superficie (ha): 43

Denominazione: Costa di Maralunga



Data di stampa: 06/12/2010

0 0.6 1.2 Km Scala 1:25'000

Legenda

 sito IT1345114

 altri siti

Base cartografica: IGM 1:25'000

