

AEROGENERATORE

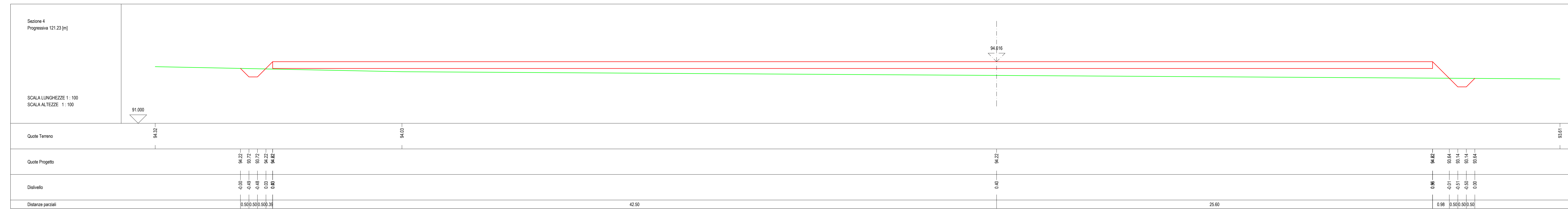
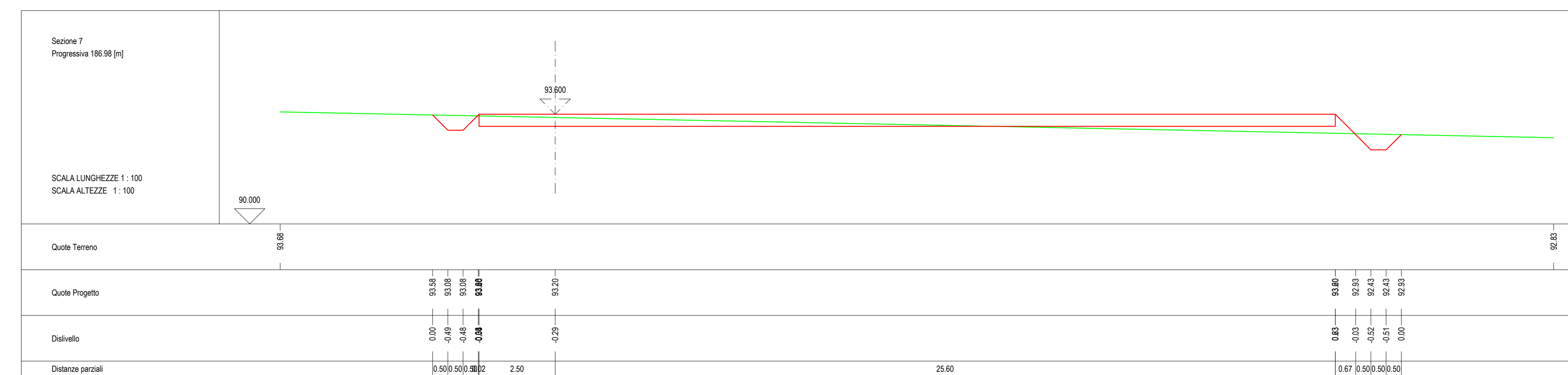
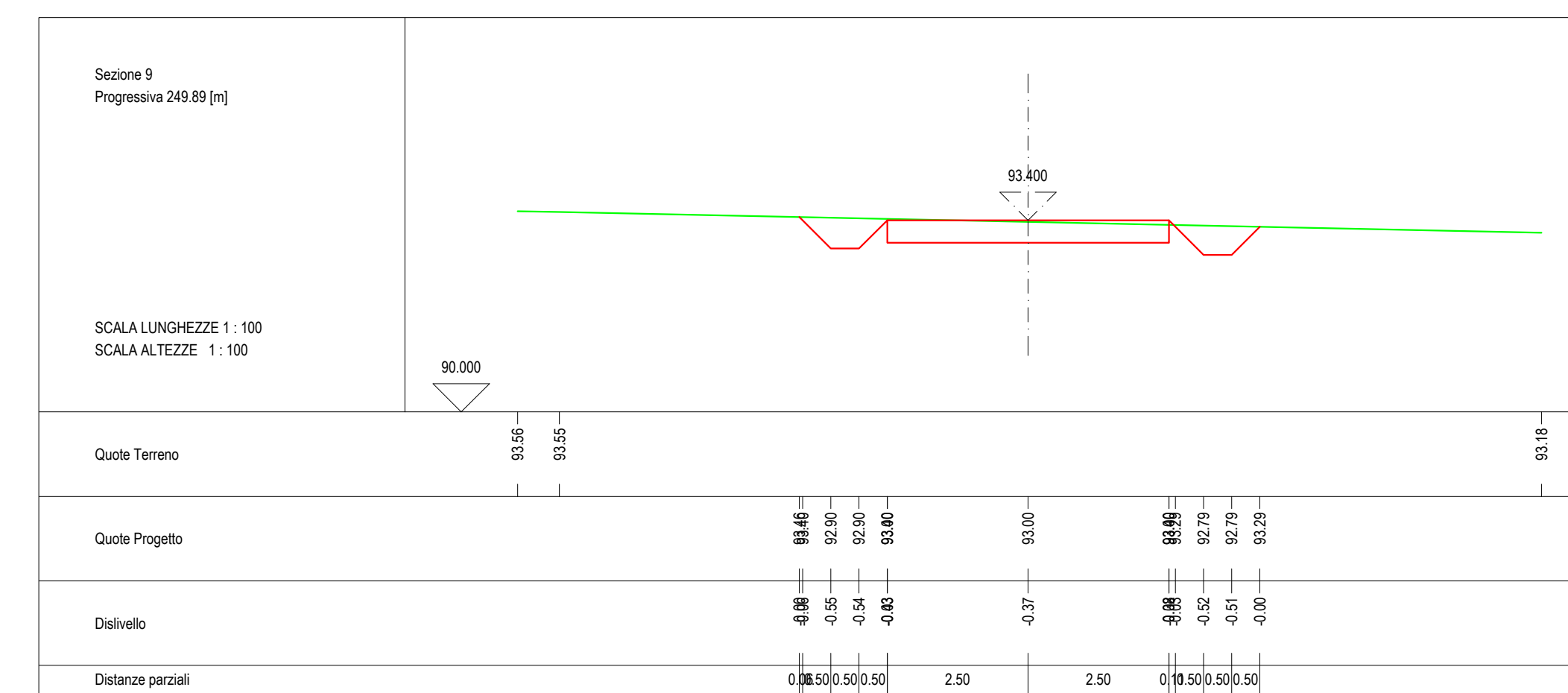
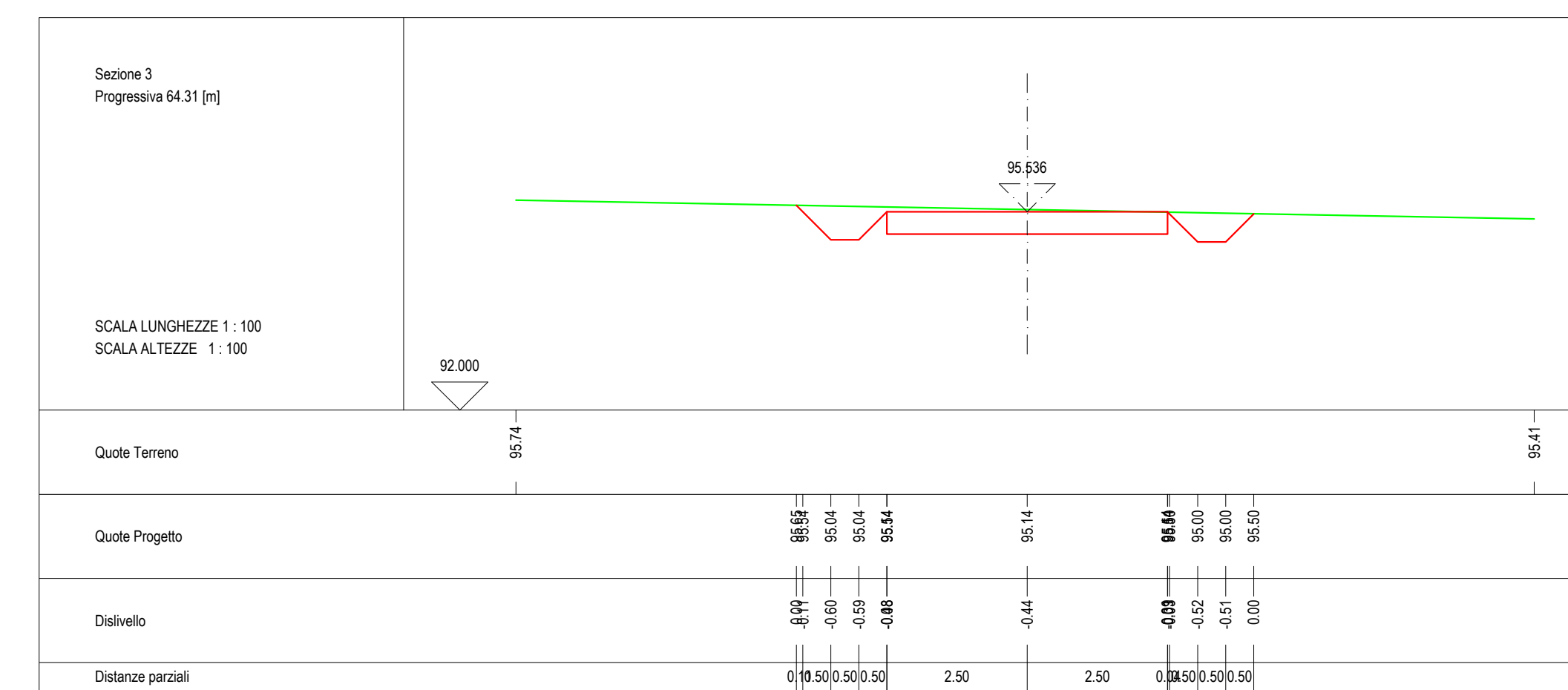
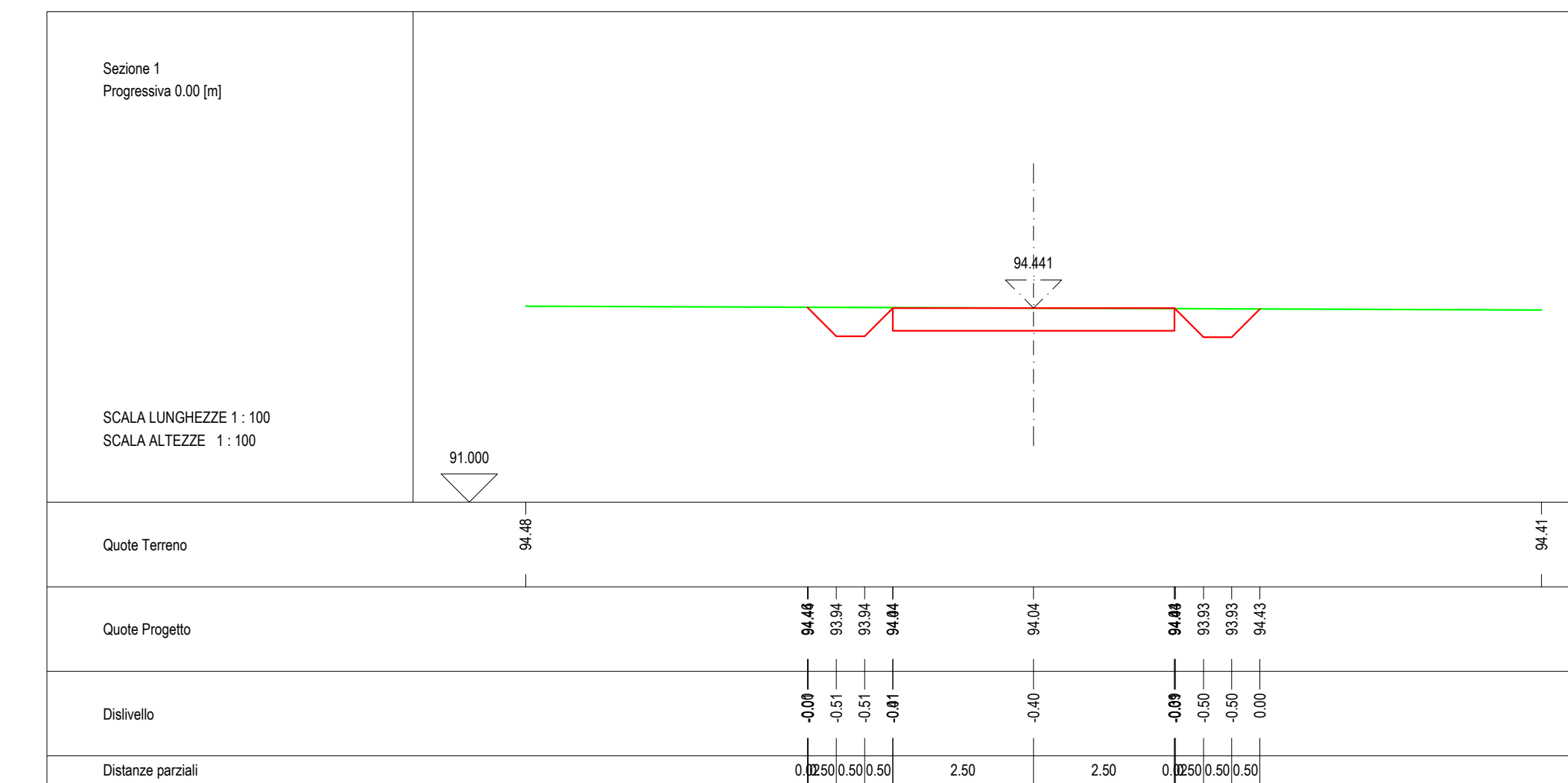
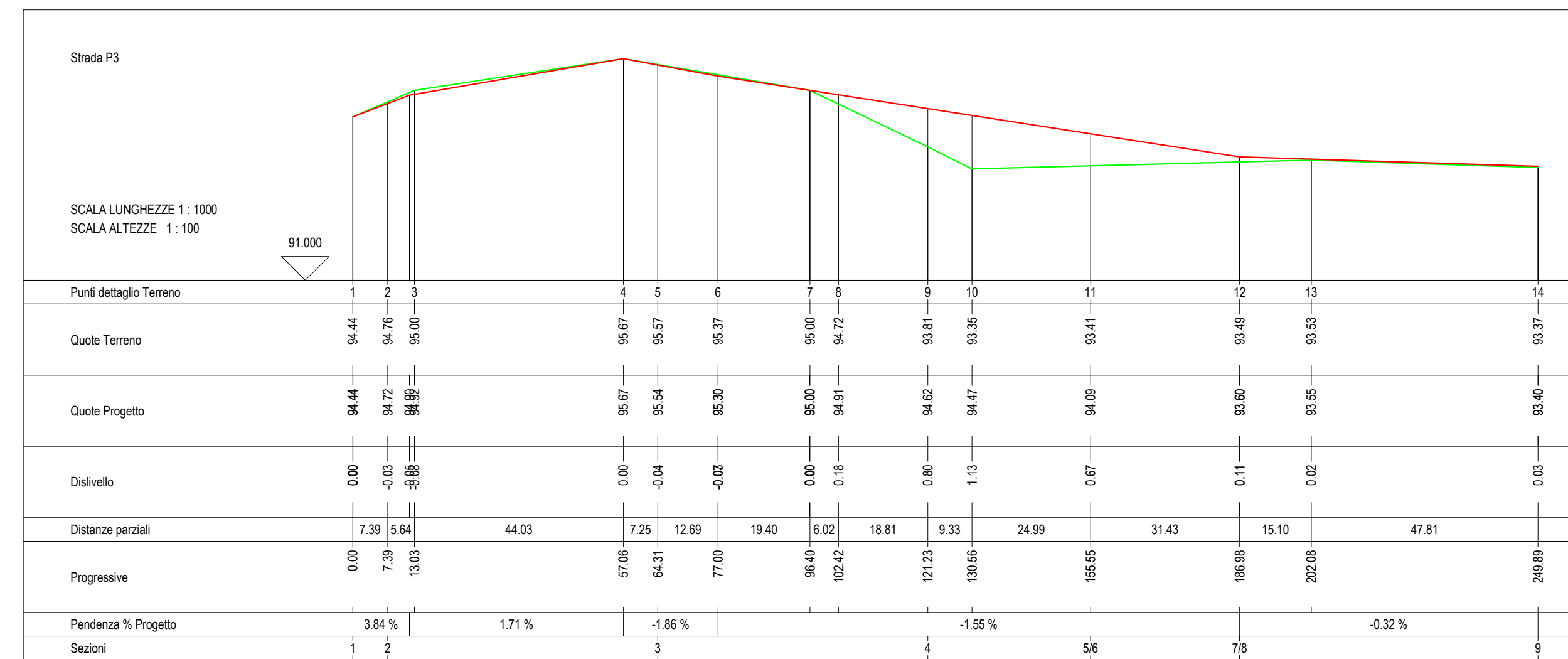
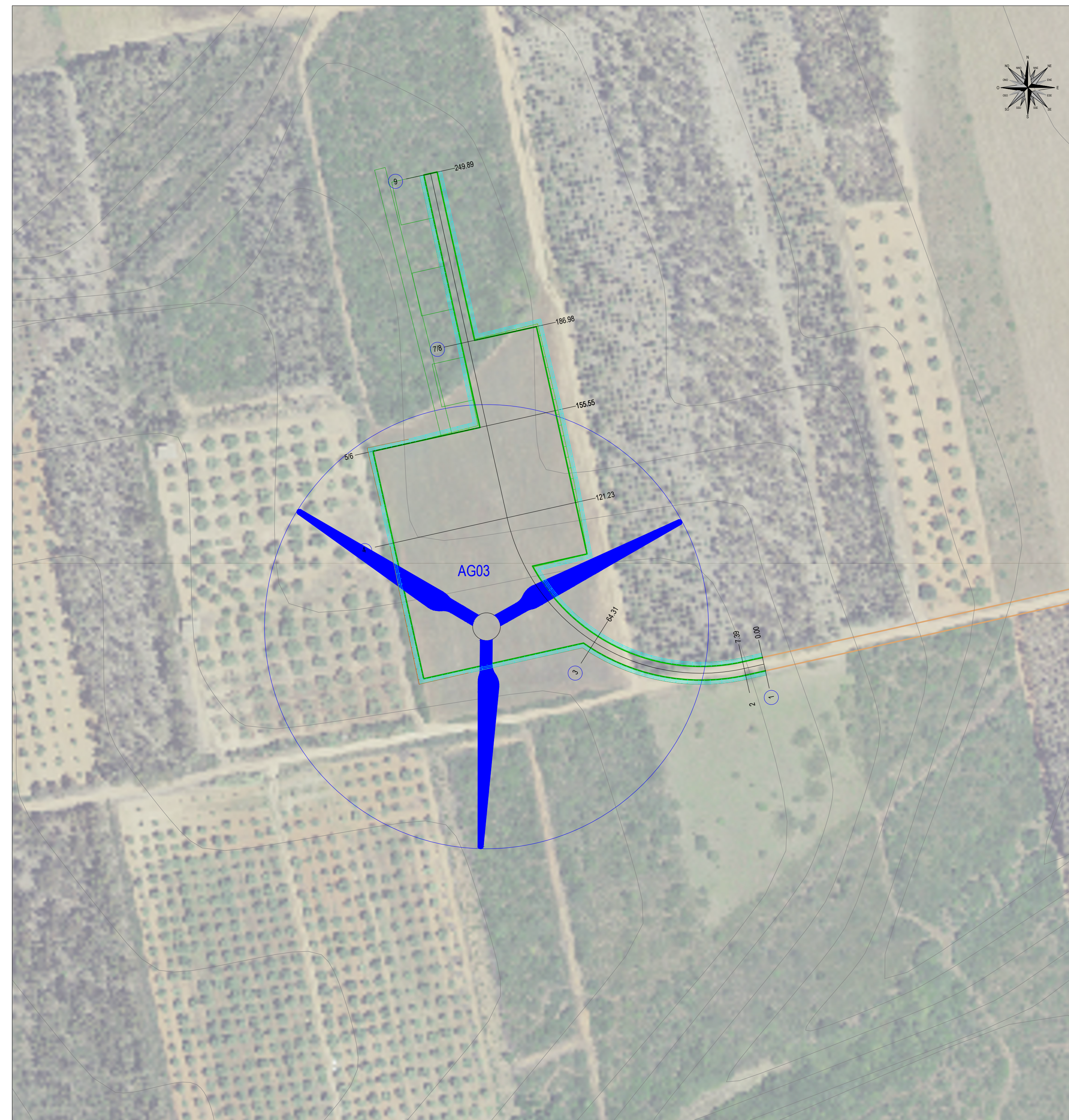
STRADA ESISTENTE

STRADA DI NUOVA REALIZZAZIONE

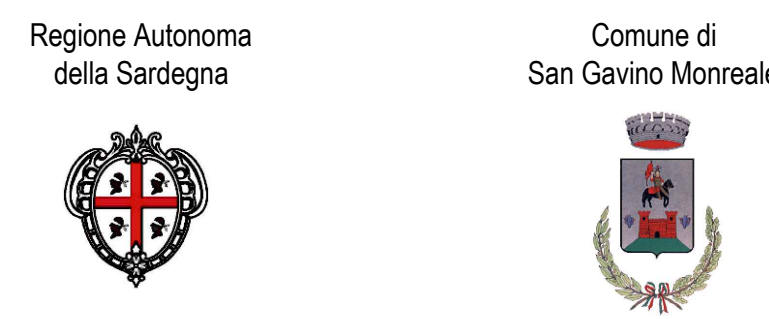
PIAZZOLA DI MONTAGGIO AG

STRADA P3	
VOLUME DI STERRO	mc 1.245,93
VOLUME DI RIPORTO	mc 1.016,34
VOLUME CASSONETTO	mc 2.537,98
AREA TOTALE	mq 6.345,75

PLANIMETRIA
scala 1:1.000



— RILIEVO
— PROGETTO



Comitente:
Monreale Wind Srl
Via Chianella, 75
20122 Milano
P.IVA/C.F. 15802841009

Titolo del Progetto:
Parco Eolico MONREALE
sito nel Comune di San Gavino Monreale (SU)

Documento:
**PROGETTO OPERE CIVILI
NUOVA STRADA P3**

N. Documento:
IT-PRM-CIV-DW-09.03

Progettista:
Ing. Sergio Lai

Studio di Ingegneria
Viale Trieste, 58
09037 San Gavino Monreale (SU)
Tel. +39 070 2352642
Mob. +39 347 1327339
e-mail: studio@sergiolai.com

Rev	Data Revisione	Descrizione	Redatto	Controllato	Approvato
00	Marzo 2024	Prima emissione	S. Lai	S. Lai	Monreale Wind Srl