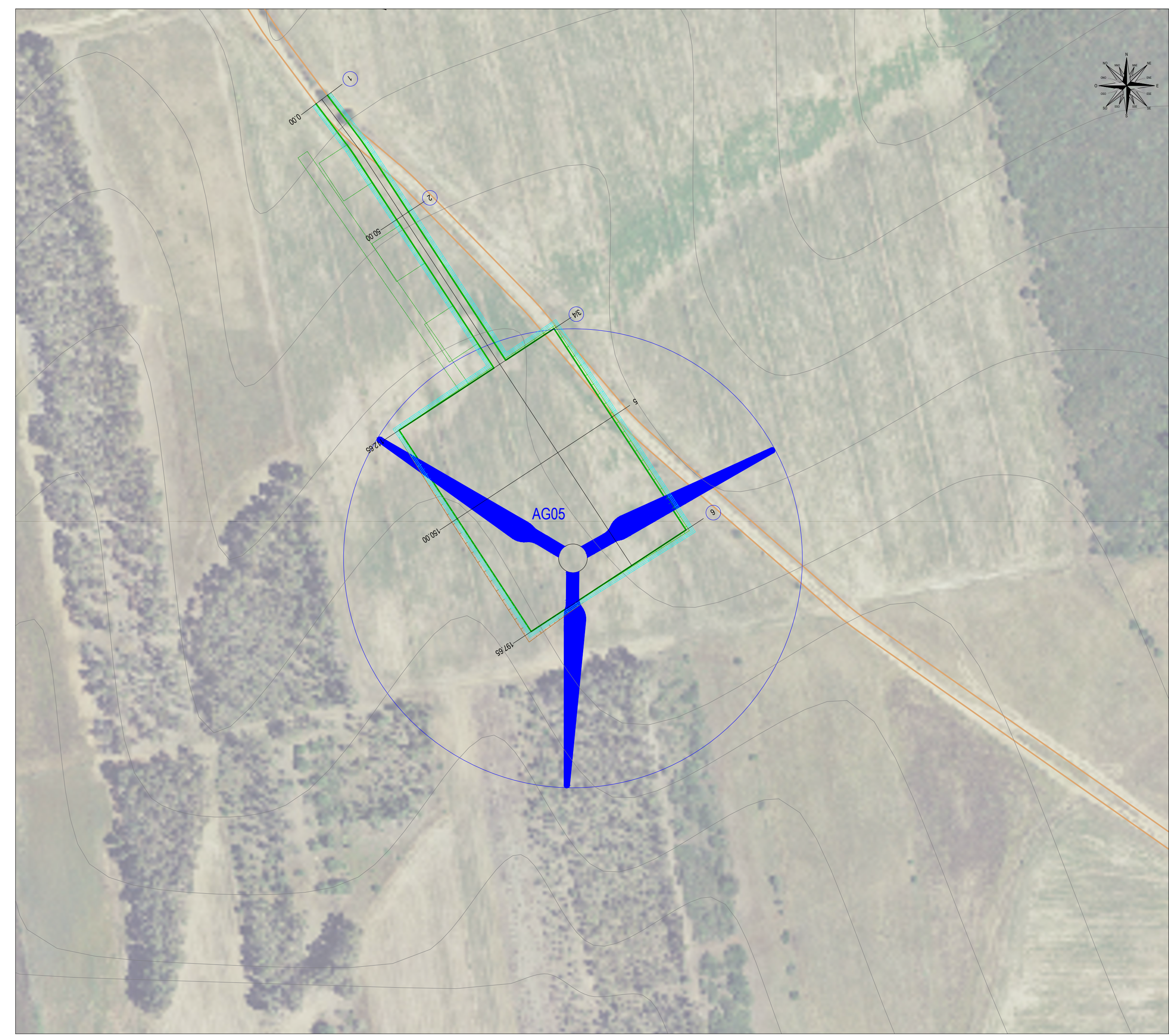
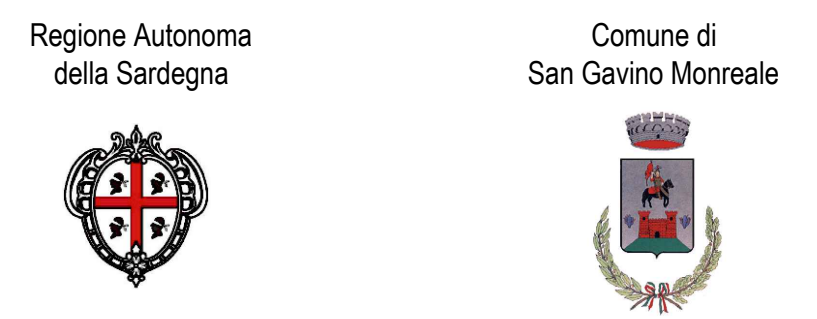
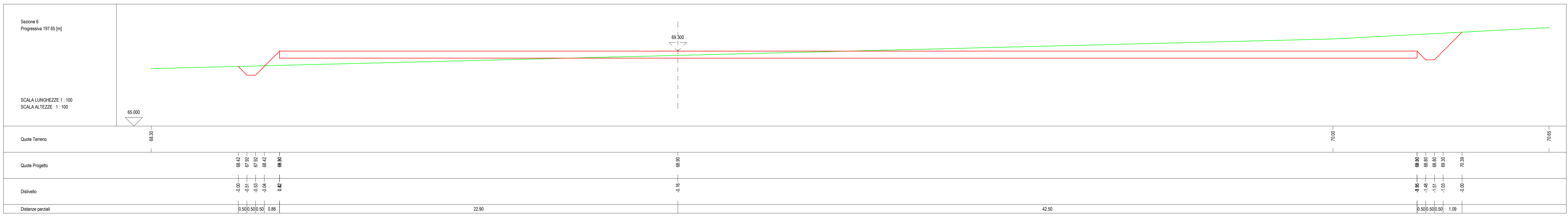
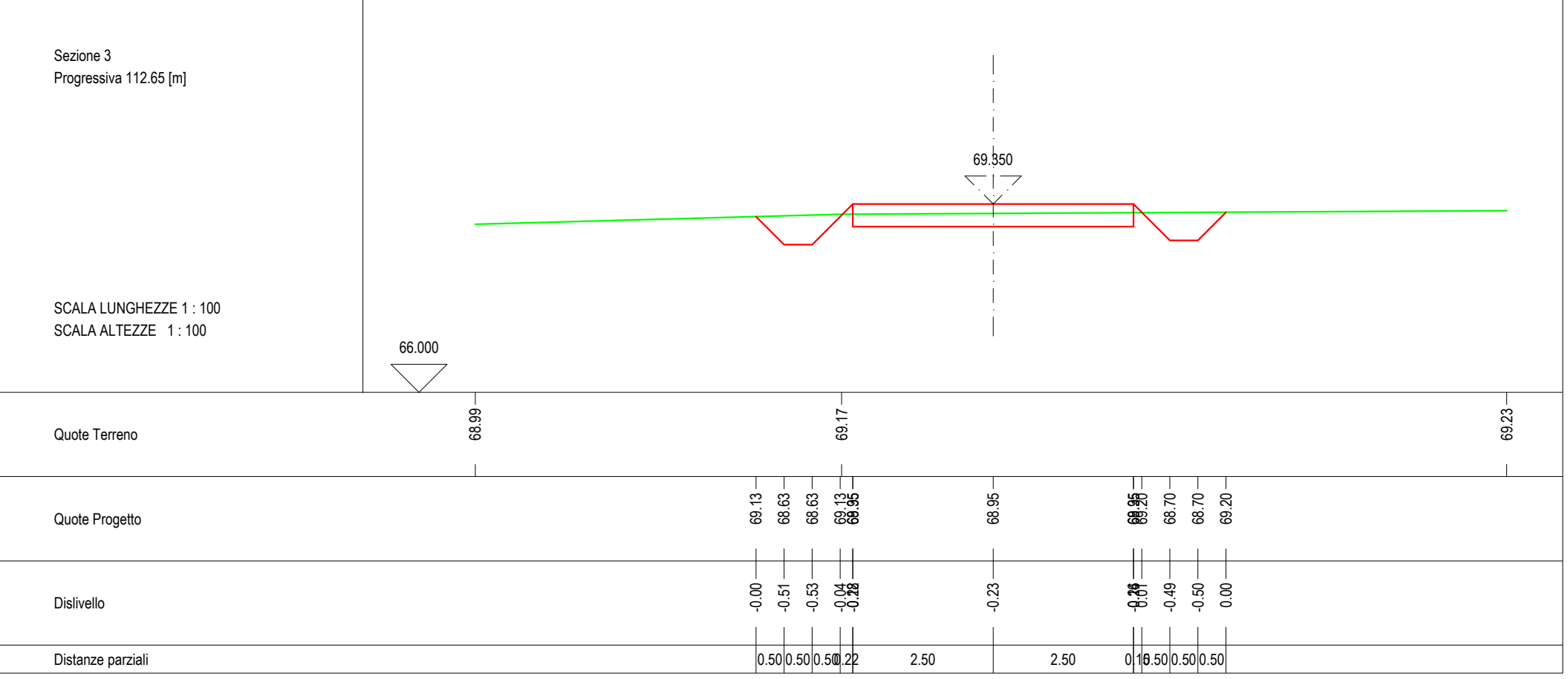
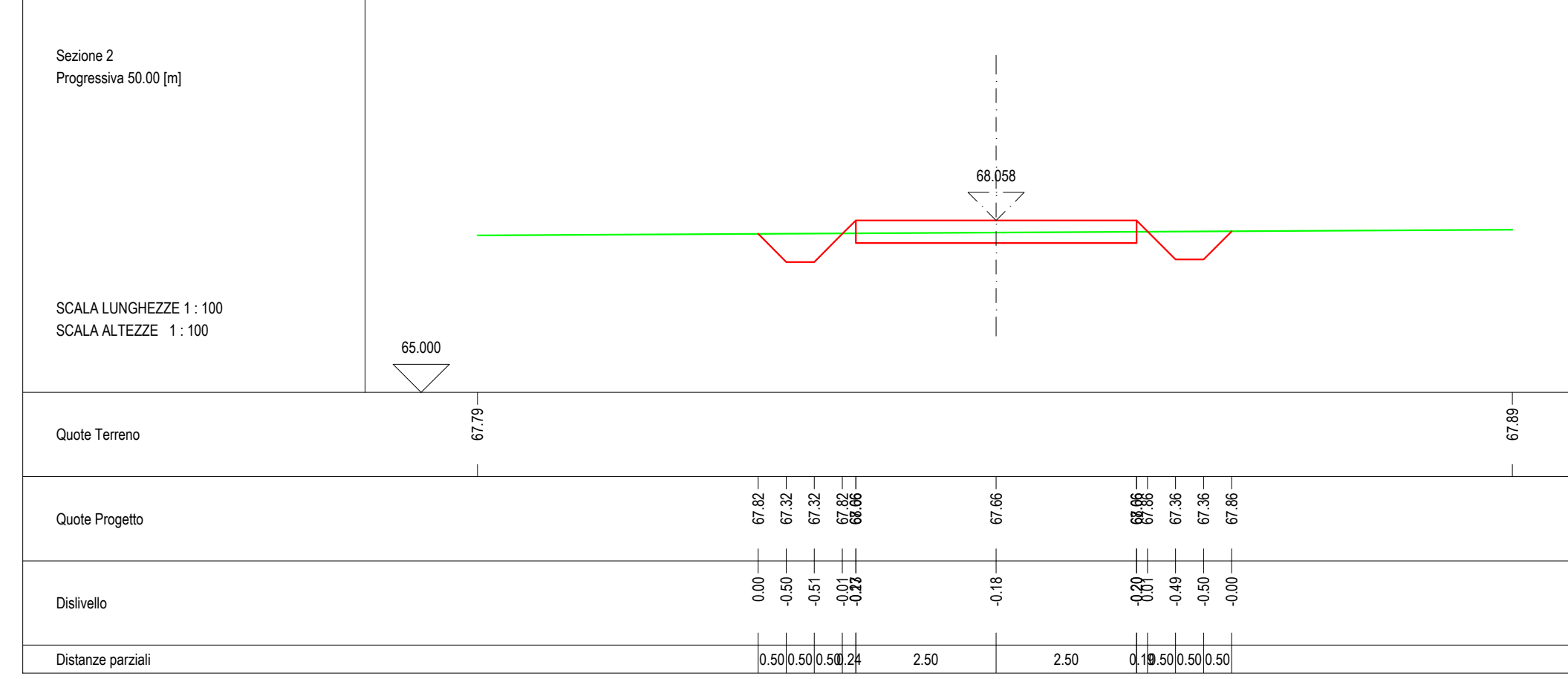
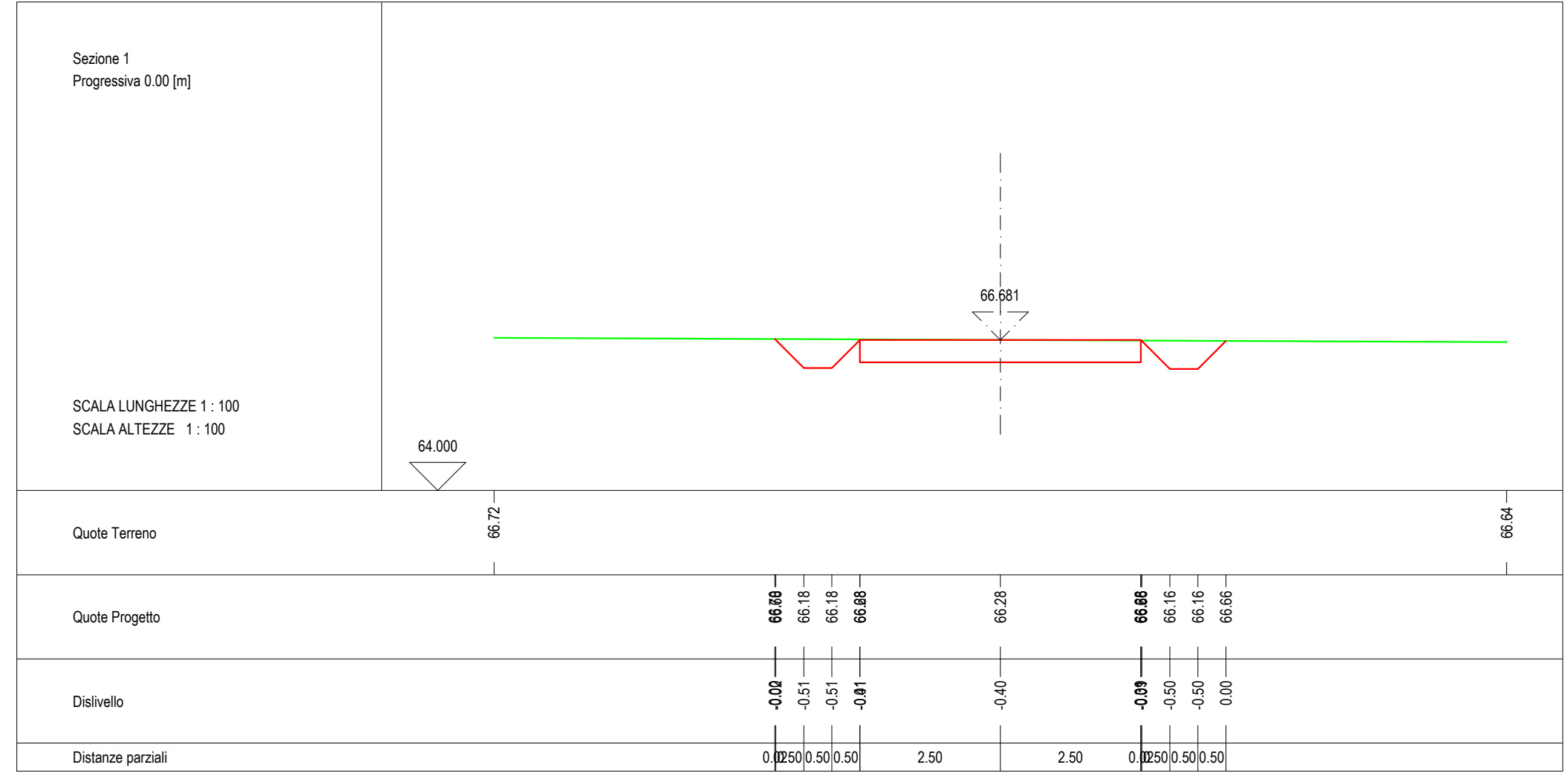
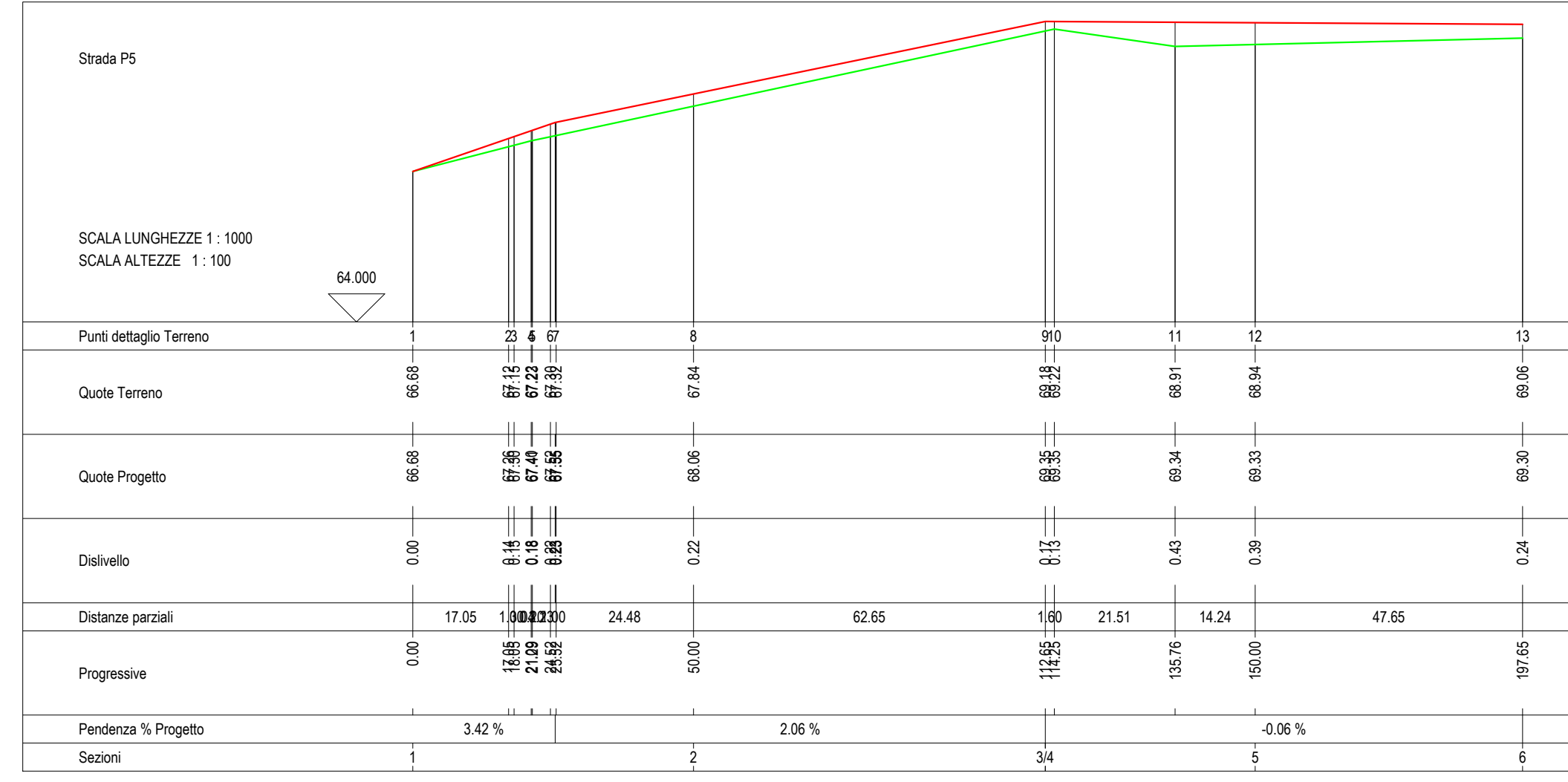


STRADA P5	
VOLUME DI STERRO	mc 2.127,19
VOLUME DI RIPORTO	mc 405,59
VOLUME CASSONETTO	mc 2.448,89
AREA TOTALE	mq 6.122,39

PLANIMETRIA
scala 1:1.000



— RILIEVO
— PROGETTO



Comittente:
Monreale Wind Srl
Via Chianella, 75
20122 Milano
P.IVA/C.F. 15802641009

Titolo del Progetto:
Parco Eolico MONREALE
sito nel Comune di San Gavino Monreale (SU)

Documento:
PROGETTO OPERE CIVILI NUOVA STRADA P5

Progettista:
Ing. Sergio Lai

Rev	Data Revisione	Descrizione	Redatto	Controllato	Approvato
00	Marzo 2024	Prima emissione	S. Lai	S. Lai	Monreale Wind Srl

Studio di Ingegneria
Viale Trieste, 58
09037 San Gavino Monreale (SU)
Tel. +39 070 235262
Mob. +39 347 1327339
email: studio@sergiolai.com