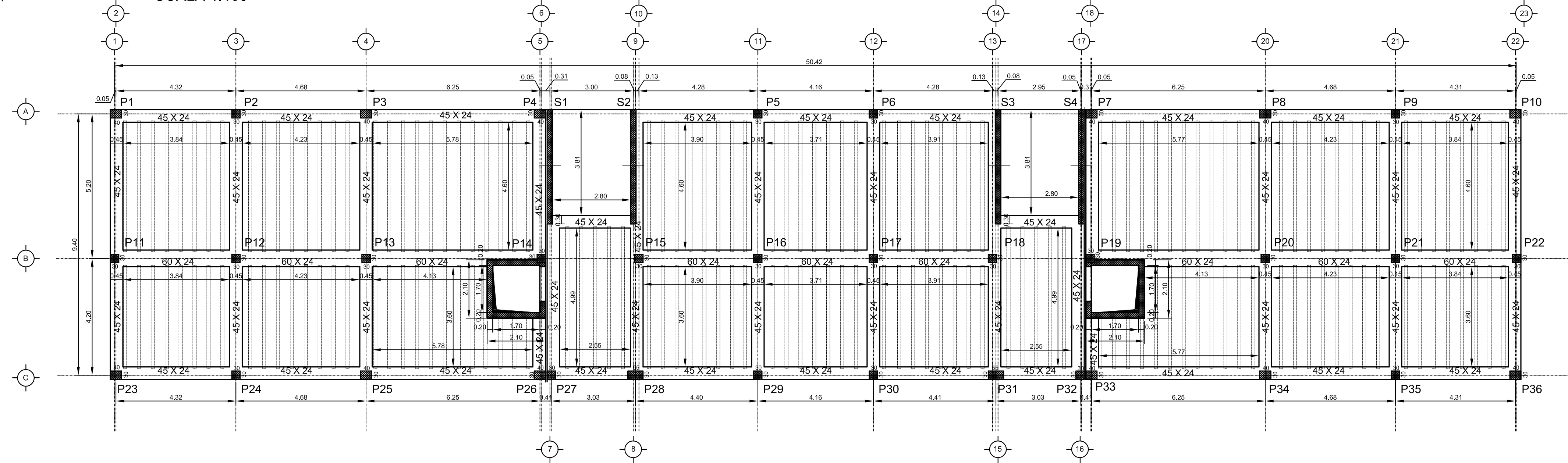
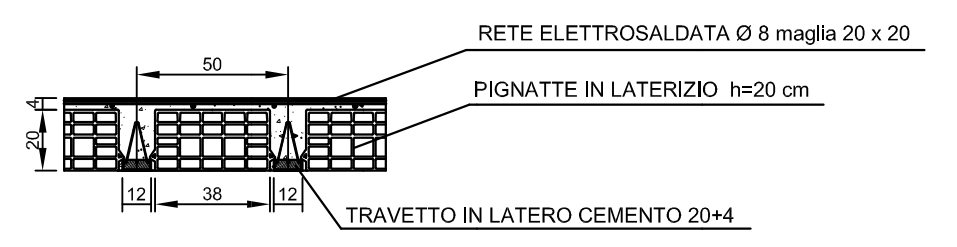


**PIANTA SOLAIO PIANO TERRA**  
SCALA 1:100

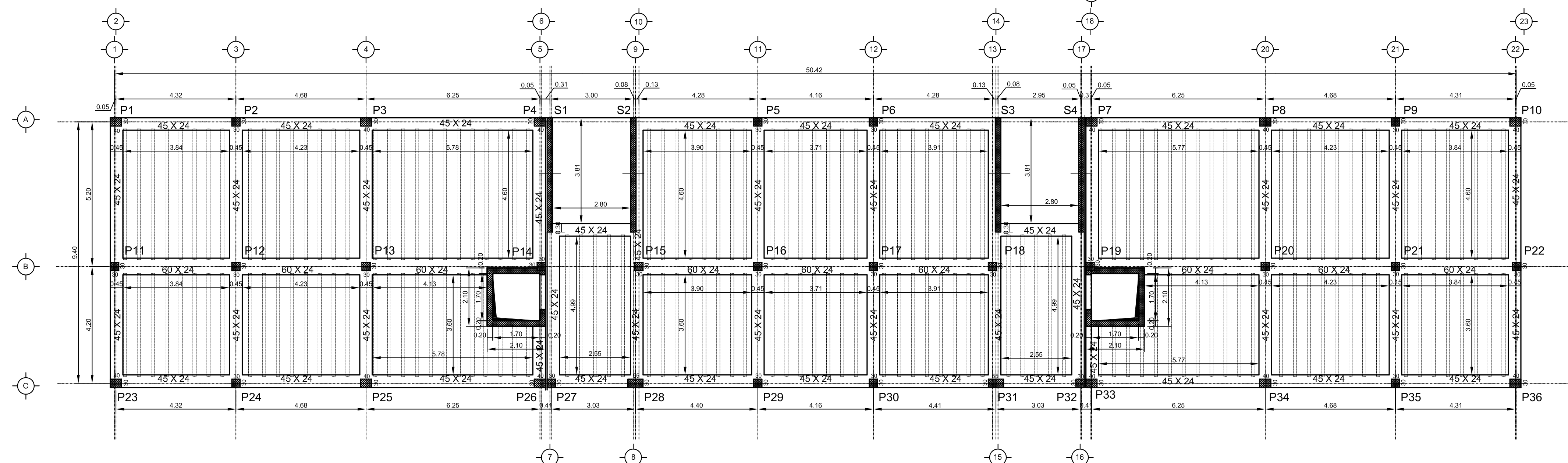


**SEZIONE TRASVERSALE SOLAIO 20+4**  
SCALA 1:25

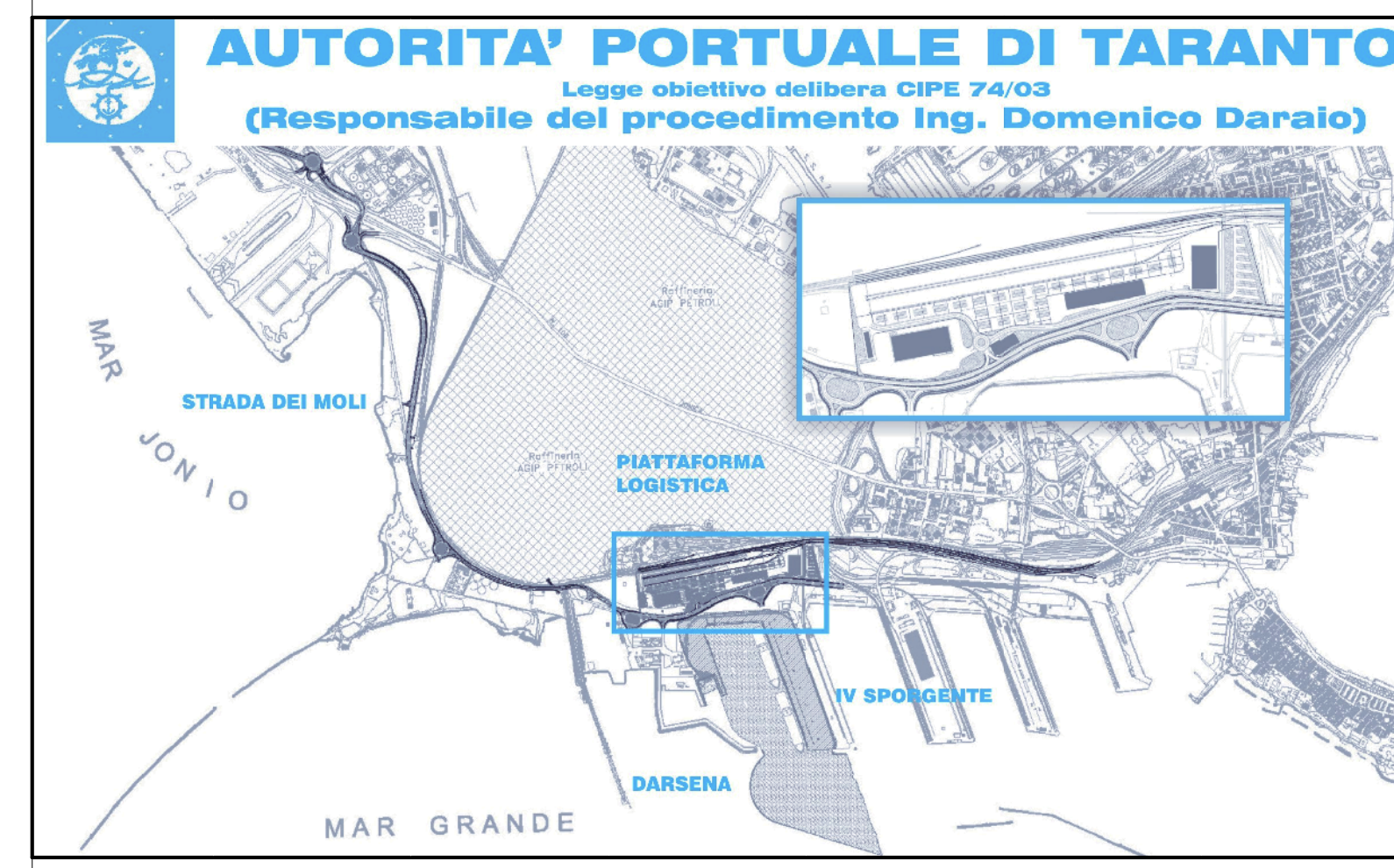
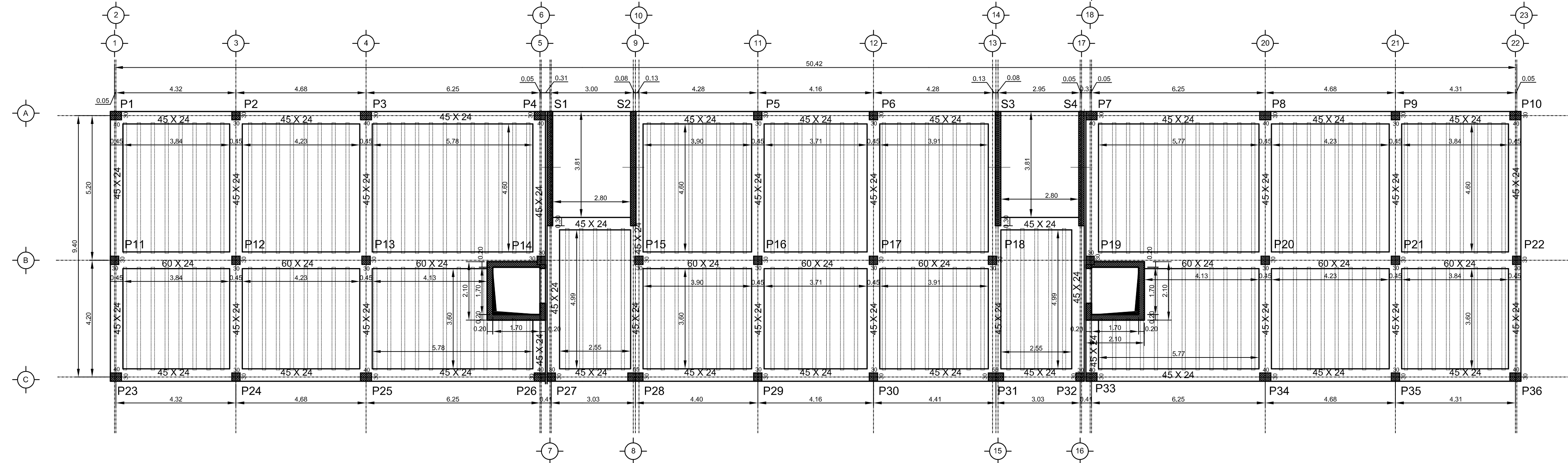


PRESCRIZIONI	
<b>Materiali</b>	
Rck opere in c.a. >= 30 MPa	
Acciaio FeB 44k	
<b>Carichi solaio</b>	
Carico permanente solaio tipo = 6.58 kPa	
Carico permanente solaio copertura = 4.58 kPa	
Carico variabile solaio tipo = 2.00 kPa	
Carico variabile solaio copertura = 1.00 kPa	
Travetti latero cemento, base 12 cm - interasse 50 cm	

**PIANTA SOLAIO PIANO PRIMO**  
SCALA 1:100

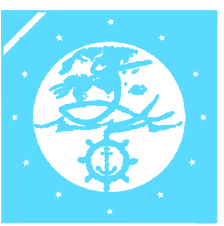


**PIANTA SOLAIO COPERTURA**  
SCALA 1:100




01	29-09-2006	Prima emissione	L. Botallo	A. Panizza	G. Cecchi
revisione	data	descrizione revisione	disegnato	verificato	approvato

**SOCIETA' DI PROGETTO:**


**TARANTO LOGISTICA S.p.A.**  **AUTORITA' PORTUALE TARANTO**

**PIASTRA PORTUALE DI TARANTO**

Progettista:  **SINA** Consulenti Progettisti

Disegno n°: 123-700 E 1 U.C.G. S 4.0.2

Titolo: **PROGETTO DEFINITIVO PIATTAFORMA LOGISTICA PALAZZINA UFFICI CARPENTERIA SOLAI**

progetti e ambiente  Il Direttore Tecnico (Dot. Ing. Andrea PANIZZA)