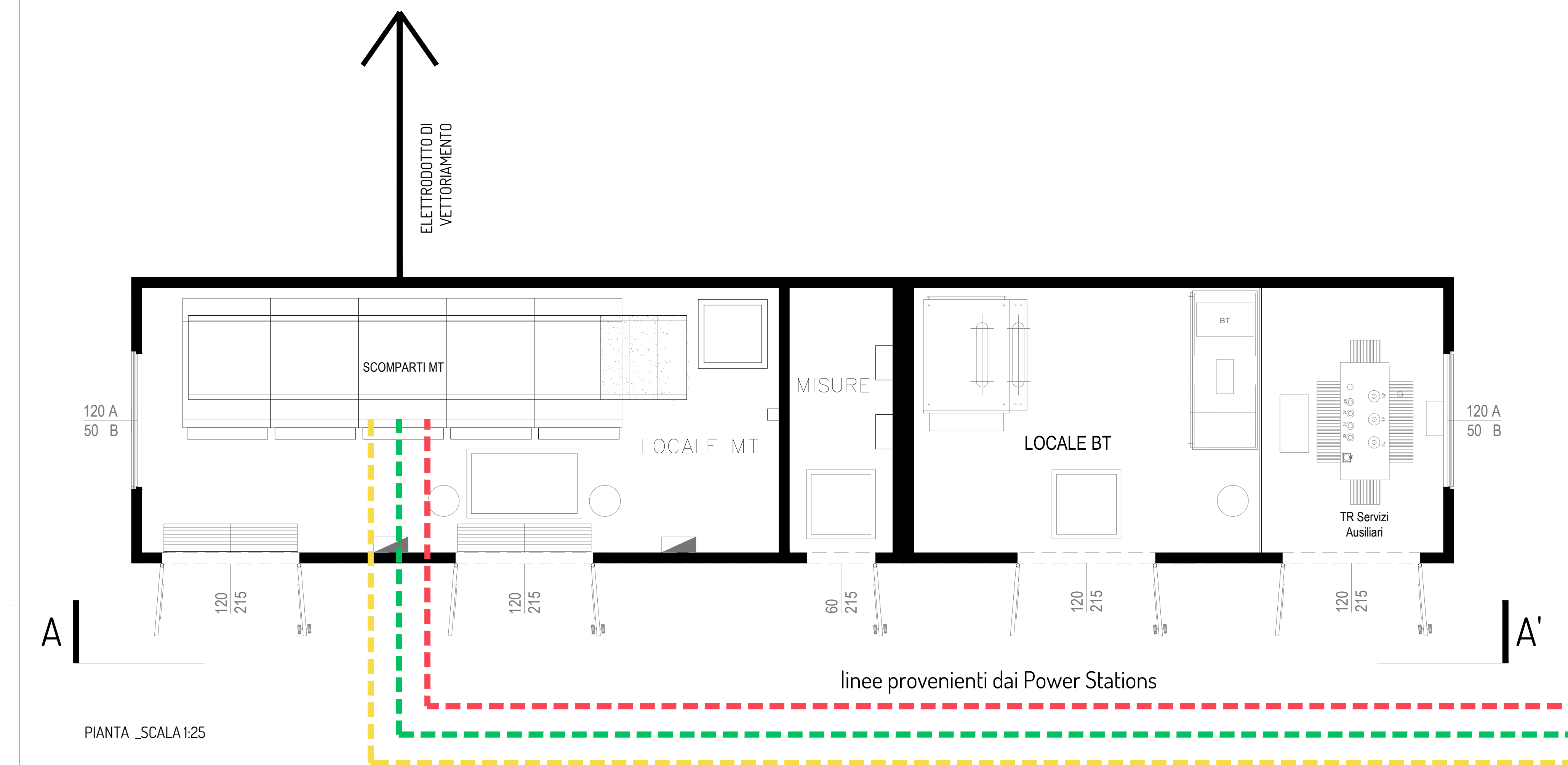
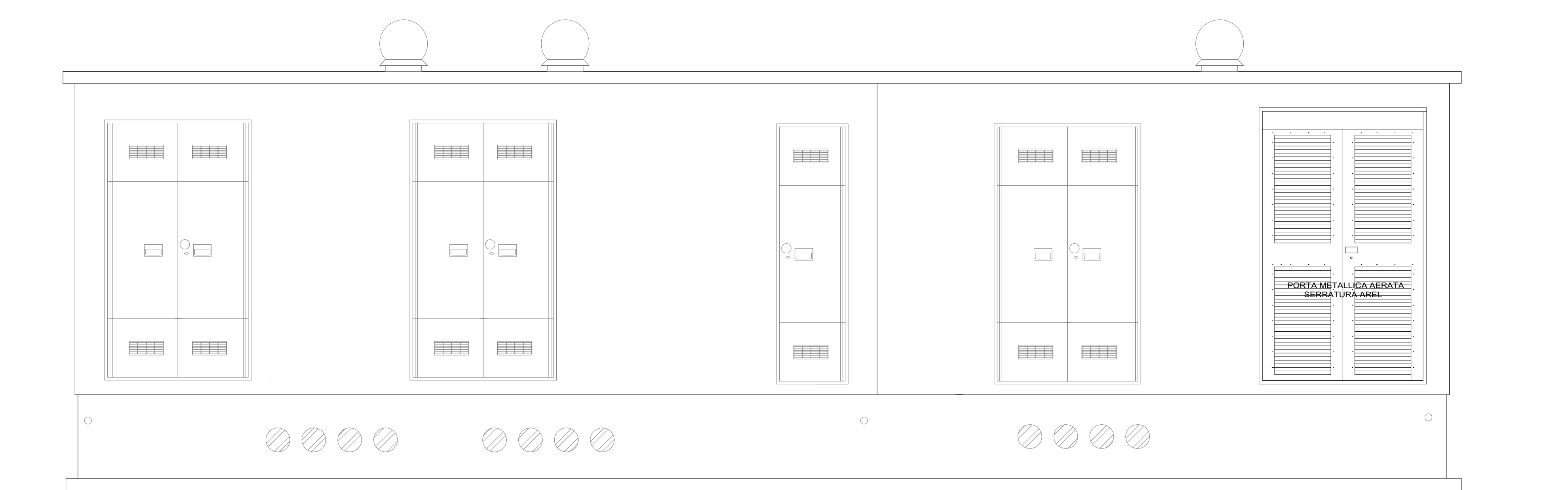


CABINA DI RACCOLTA E MONITORAGGIO



PIANTA _SCALA 1:25



Schede tecniche dei componenti di impianto BESS

LUNA2000-200KTL-1H0
Technical Specifications

Category	Parameter	Value	
Electrical	Max. Input Voltage	1,500 V	
	Nominal Input Voltage	1,500 V	
	Max. Branch Current for Battery Rack Side	327 A	
	Max. Branch Current for PCS Side	189 A	
	Number of DC Circuit Breaker	14	
	Max. Input Number of Battery Rack	8	
	Max. Input Number of PCS	5	
	Max. Convergence Capacity	3 x 193 kA	
	Protection	DC Overcurrent Protection	Yes
		Operating Temperature Range	-30°C - 60°C
Environment	Relative Humidity	5 - 100%	
	Max. Operating Altitude	4,000 m	
General	Cable Entries	Top in for PCS & Bottom in for Battery Rack	
	Dimensions (W x H x D)	2,060 x 1,475 x 975 mm	

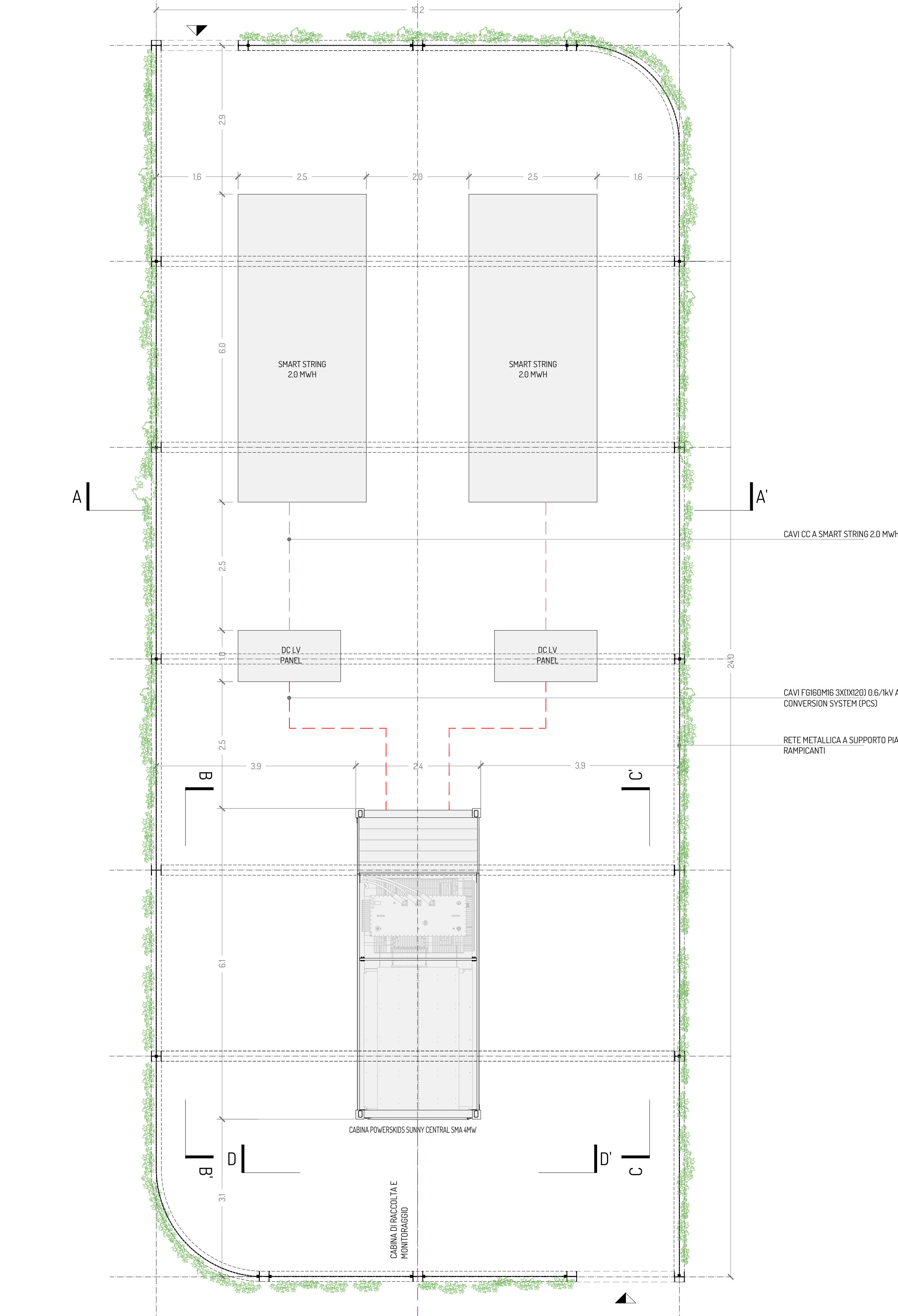
LUNA2000-2.0MWH-1H0/2H1
Smart String ESS

Category	Parameter	Value	
Efficiency	Max. Efficiency	99.5%	
	Rated DC Voltage	1,500 V	
	Max. DC Voltage	1,500 V	
	Operating DC Voltage Range	1,150 V - 1,500 V	
	Max. DC Current	207.4 A	
	Max. Total Inverter Output	1	
	AC Side	Rated AC Active Power	200,000 W @ 60°C
		Rated AC Voltage	690 V
		Rated AC Grid Frequency	50 Hz / 60 Hz
		Max. AC Current	173.4 A
Adjustable Power Factor Range		-1 - +1	
Max. Total Inverter Output		1,200	
Protection		Anti-islanding Protection	Yes
		AC Overcurrent Protection	Yes
		DC Overcurrent Protection	Yes
		Inverter Protection	Yes
	Residual Current Protection	Yes	
	DC Surge Protection	Type II	
	AC Surge Protection	Type II	
	Communication	Display	LED Indicators, HMI & APP
		Web	Yes
	General	Dimensions (W x H x D)	475 x 450 x 180 mm
Weight		~15 kg	

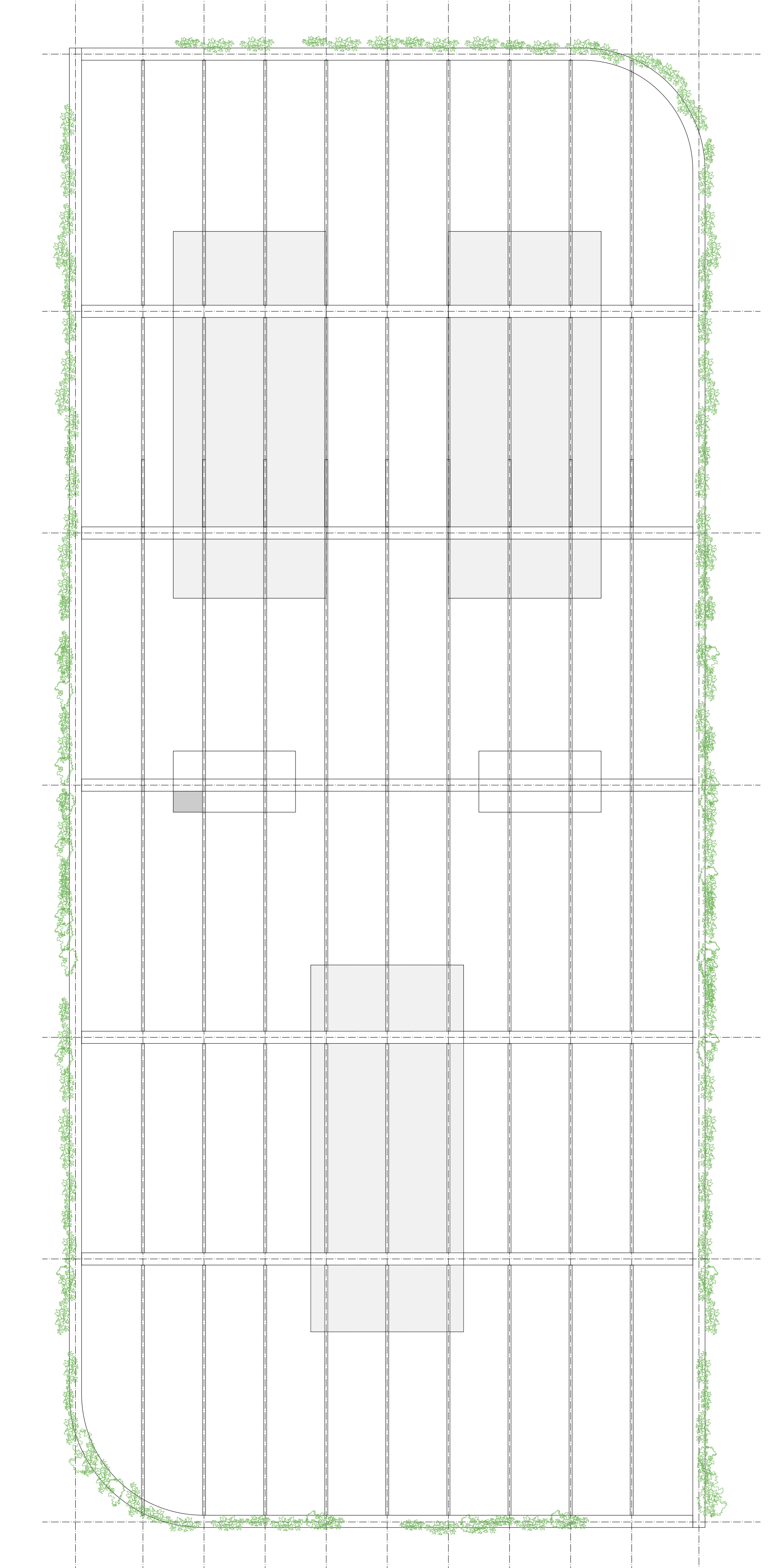
Battery Pack

Model	LUNA2000-2.0MWH-1H0	LUNA2000-2.0MWH-2H1
Cell Material	LFP	LFP
Pack Configuration	16S 1P	18S 1P
Rated Voltage	51.2 V	57.6 V
Nominal Capacity	320 Ah / 16.38 kWh	280 Ah / 16.13 kWh
Supported Charge & Discharge Rate	≤ 1 C	≤ 0.5 C
Weight	≤ 140 kg	≤ 140 kg
Dimensions (W x H x D)	442 x 307 x 660 mm	442 x 307 x 660 mm

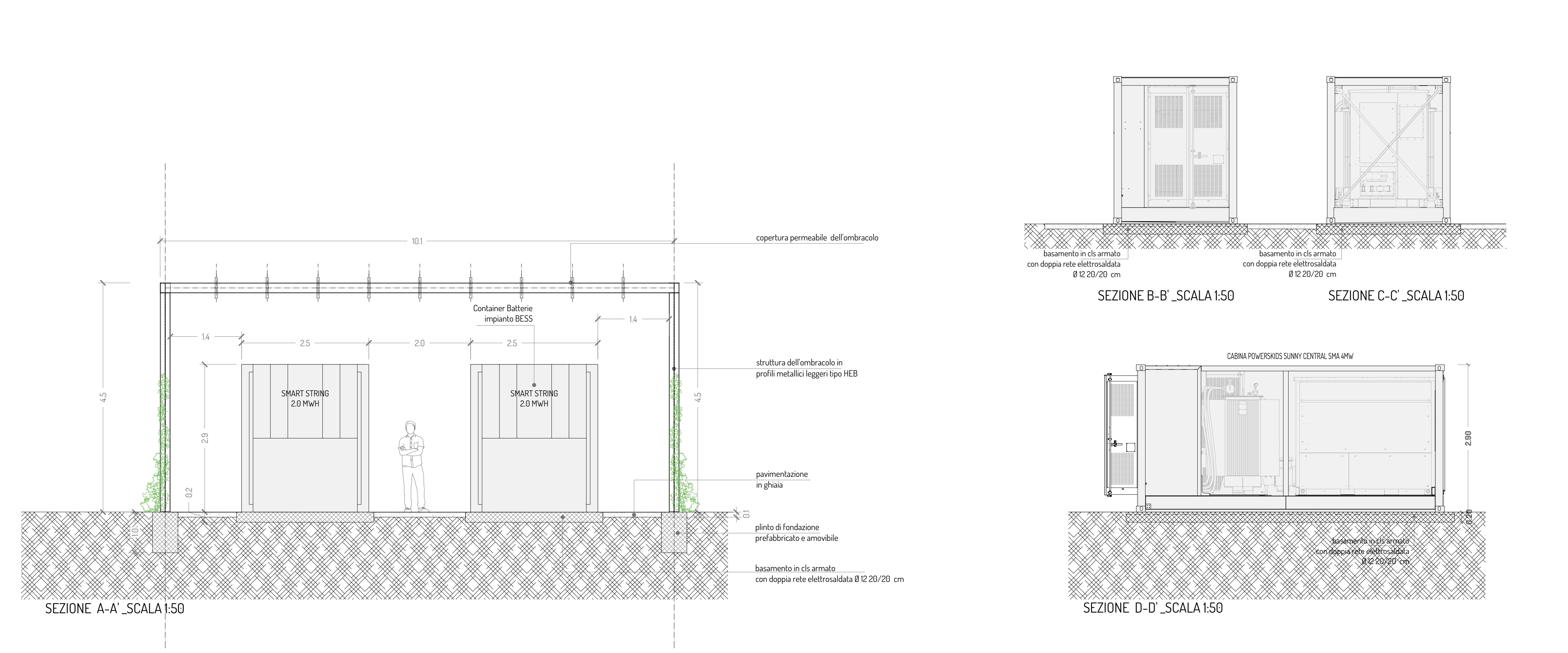
SISTEMA BESS



PIANTA P.TERRA _SCALA 1:50



PIANTA COPERTURA _SCALA 1:50



hope group
SANTA BARBARA

PROGETTO PER LA REALIZZAZIONE DI UN NUOVO IMPIANTO AGRIVOLTAICO E DELLE RELATIVE OPERE DI CONNESSIONE ALLA RTN
LOCALITÀ: LAMA PAGLIARA
COMUNE DI RUVO DI PUGLIA (BA)
DENOMINAZIONE IMPIANTO - PV/ADDA RUVO LAMA PAGLIARA
POTENZA NOMINALE E 12.7 MW

PROGETTO DEFINITIVO - SIA

PROGETTAZIONE E SIA
HOPE engineering
Ing. Fabio PACCARIELLO
Ing. Andrea ANGELINI
arch. Gaetano FORNARELLI
dot.ssa Anastasia AGNOLI

AGRONOMIA E STUDI CULTURALI
dot.ssa Lucia PESOLA

STUDI SPECIALISTICI E AMBIENTALI
MICROCLIMATICA
dot.ssa Elena GATTO
ARCHITETTURA
dot.ssa Antonia CARROZZO
GEOLOGIA
Appoggio Srl
ACUSTICA
dot.ssa Sabrina SCARAMEZZI

