



Regione Puglia  
Provincia di Foggia  
**Comuni di Serracapriola e  
Chieuti**



Oggetto: **Progetto per la realizzazione di un parco eolico della potenza di 72 MW  
e relative opere di connessione  
PROGETTO DEFINITIVO**

Proponente:  
**EOS SERRA 1 S.r.l.**

*Parco Eolico "Eos Serra 1"*  
Comuni: Serracapriola e Chieuti (FG)  
Fogli di mappa WTG: 42 - 45 - 22 - 14 - 15 Serracapriola  
14 - 15 Chieuti

Nome elaborato:  
PEI641ES1-PD\_15\_PARTICOLARE STRADE DI ACCESSO E PIAZZOLE

Scala:  
 1: ///

Rev.	Data	Descrizione
1	07/02/2024	Progetto definitivo
2		
3		
4		
5		

Numero elaborato:  
**15**

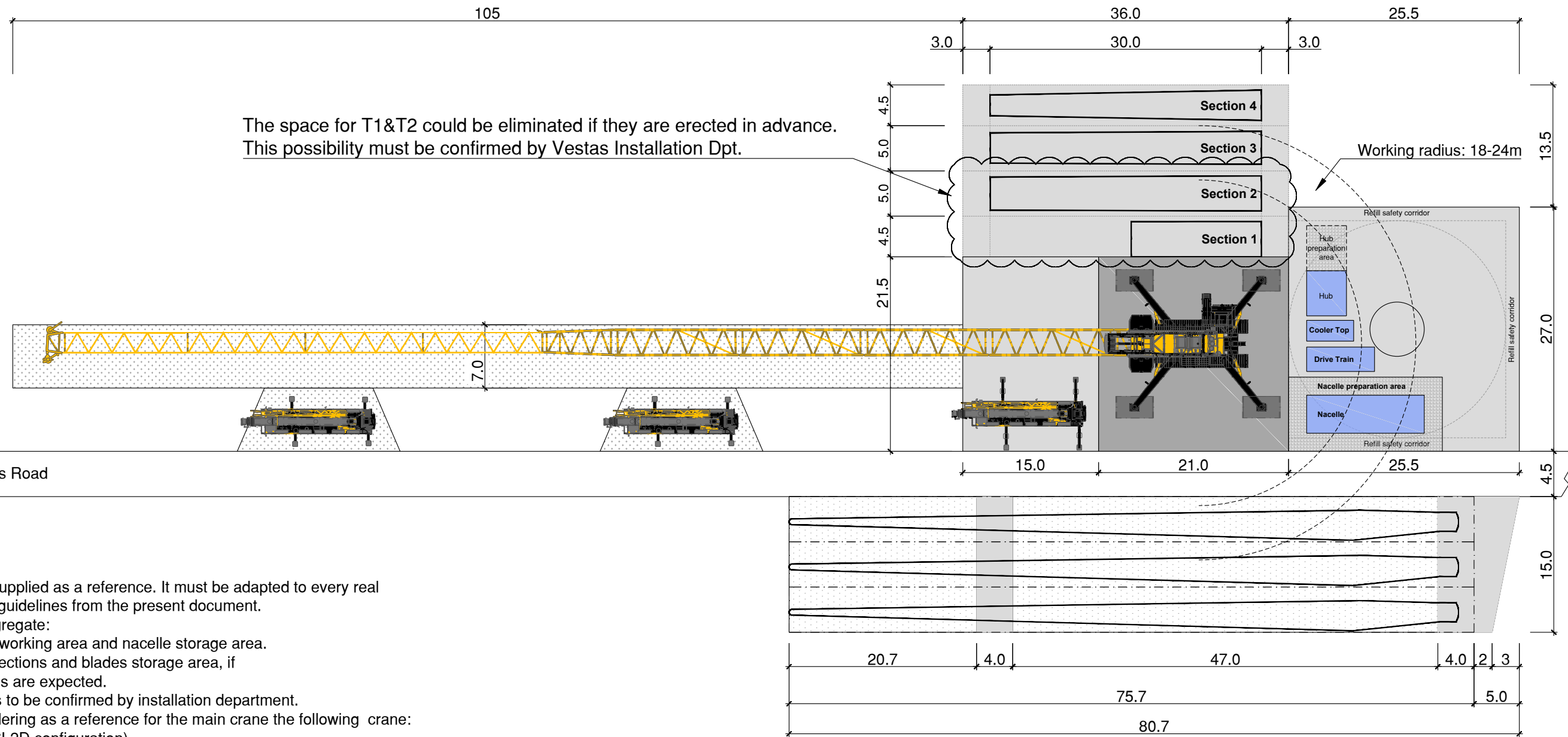
Formato pagina:  
**A3**

Codice Progetto:  
**PEI641ES1**

Orientamento:

Studio Tecnico:  
  
**DL COSTRUZIONI E SERVIZI SRL**  
Via Tratturo Castiglione, 26 - 71121 Foggia  
P.IVA: 04381520719




Tecnico Incaricato:  
**Geom. Donato Lensi**  
Collegio dei geometri  
della Provincia di Foggia n. 2323



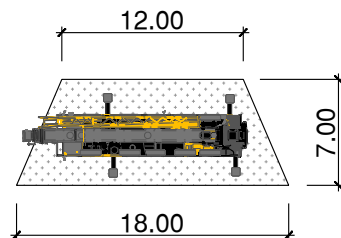
The space for T1&T2 could be eliminated if they are erected in advance.  
This possibility must be confirmed by Vestas Installation Dpt.

**Notes:**

- (1) The present drawing is supplied as a reference. It must be adapted to every real project according to the guidelines from the present document.
- (2) Pavement of graded aggregate:
  - Mandatory on cranes working area and nacelle storage area.
  - Necessary on tower sections and blades storage area, if slippery work conditions are expected.
- (3) Tower final dimensions to be confirmed by installation department.
- (4) Crane pad design considering as a reference for the main crane the following crane: Liebherr LR 1600-2 W ( SL2D configuration)  
Raise capacity of 97 tons up to 138 meters height.
- (5) All units are in meters.

-  Bearing capacity: Crane pressure + safety factor
-  Bearing capacity: 2 Kg/cm<sup>2</sup>
-  Area free of obstacles.

Auxiliary pad detail:  
-Every 40m



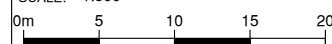
PROJECT:

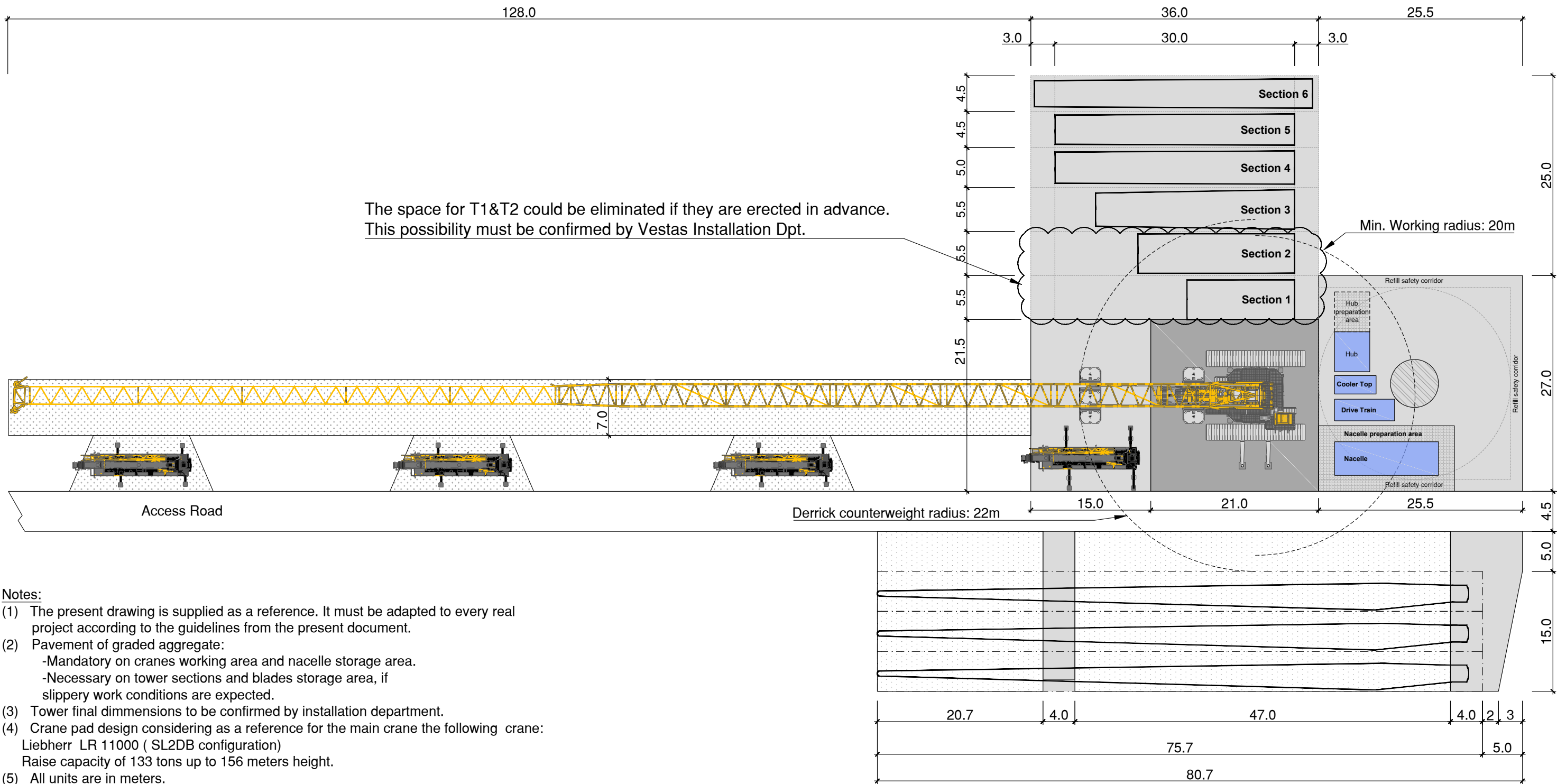
TECHNICAL SPECIFICATIONS

AUTHOR:

**Vestas**

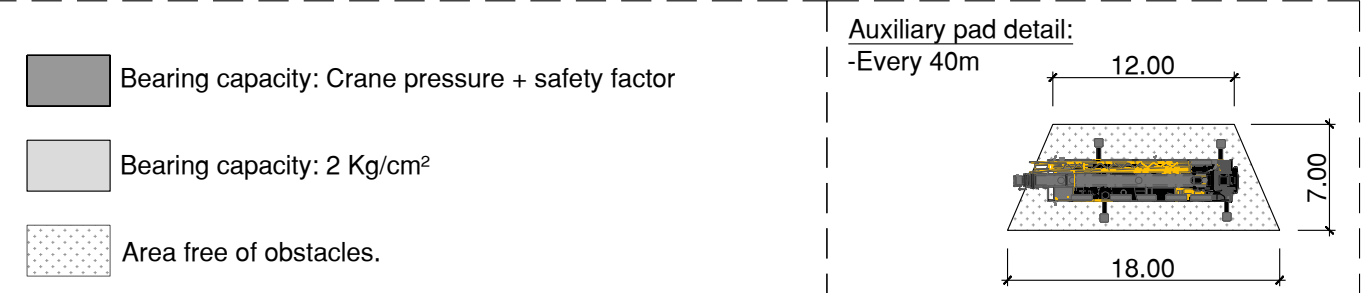
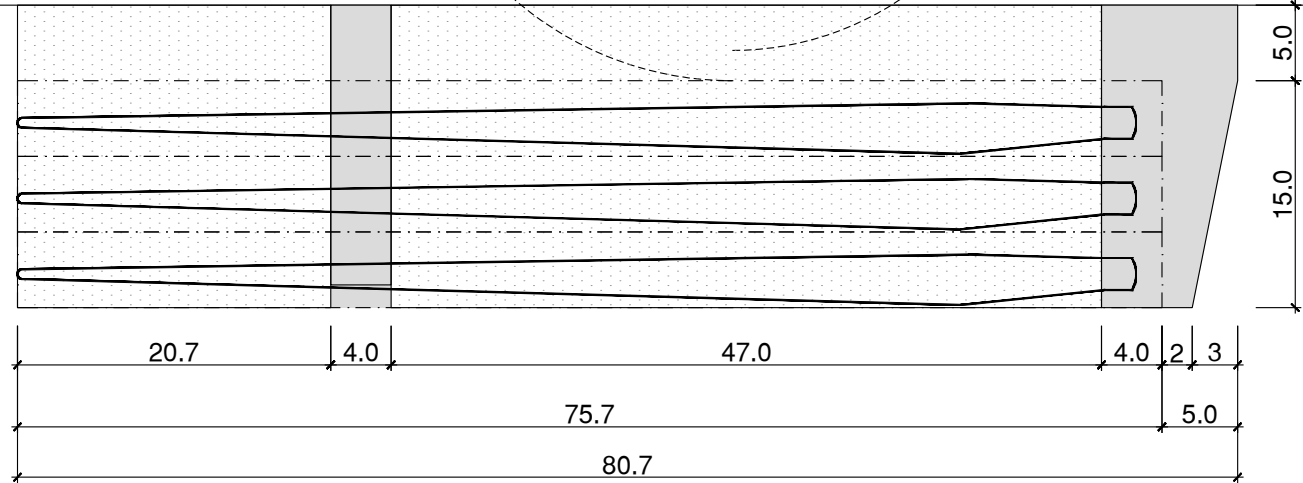
SCALE: 1:500





**Notes:**

- (1) The present drawing is supplied as a reference. It must be adapted to every real project according to the guidelines from the present document.
- (2) Pavement of graded aggregate:
  - Mandatory on cranes working area and nacelle storage area.
  - Necessary on tower sections and blades storage area, if slippery work conditions are expected.
- (3) Tower final dimensions to be confirmed by installation department.
- (4) Crane pad design considering as a reference for the main crane the following crane: Liebherr LR 11000 ( SL2DB configuration)  
Raise capacity of 133 tons up to 156 meters height.
- (5) All units are in meters.



- Bearing capacity: Crane pressure + safety factor
- Bearing capacity: 2 Kg/cm<sup>2</sup>
- Area free of obstacles.