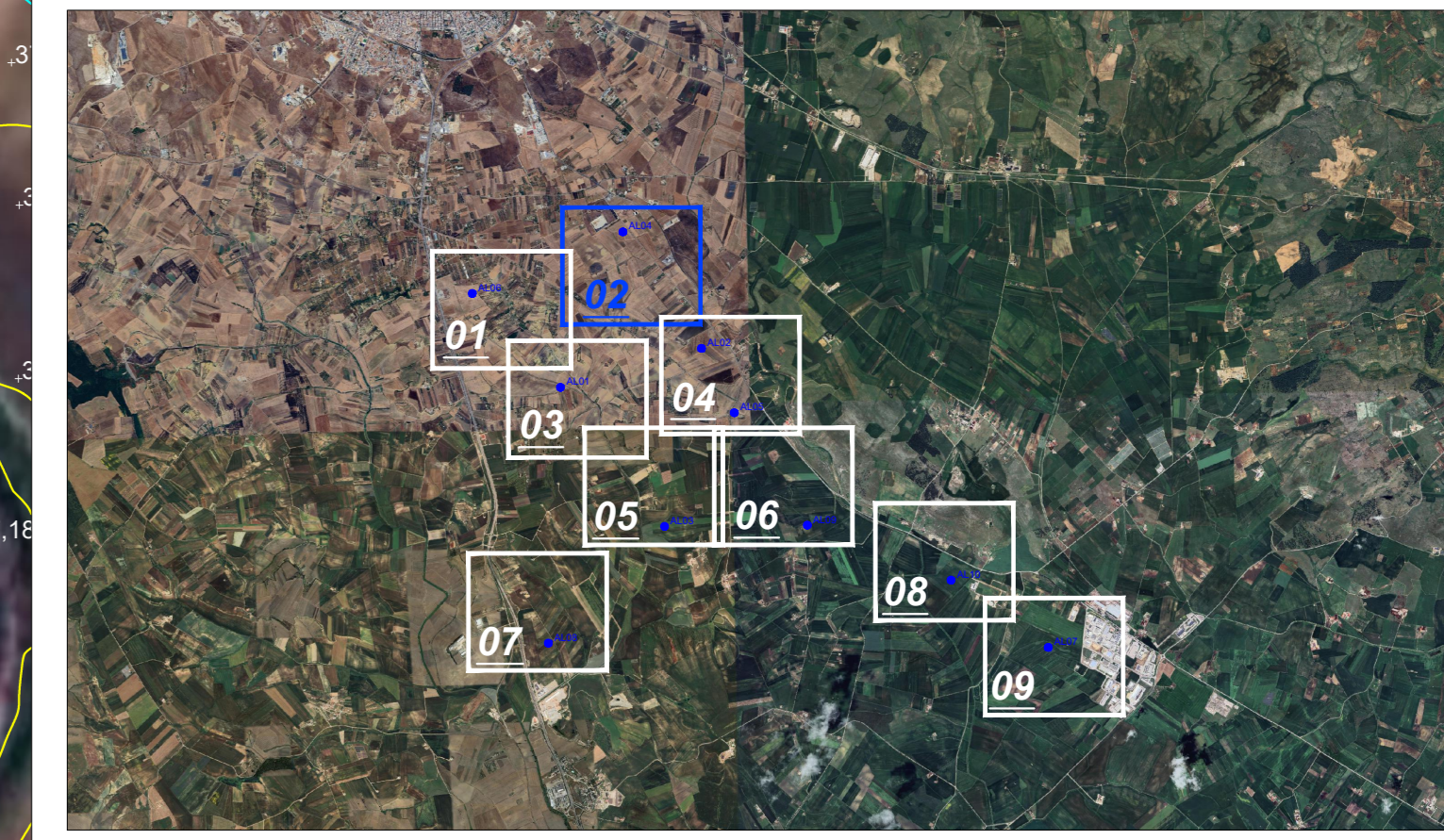


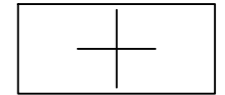
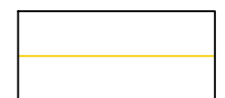
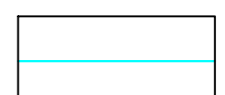
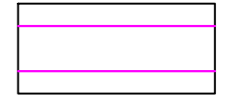
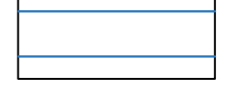



# Key-Map 1:100.000



## Legenda

-  Posizione Aerogeneratori
-  Identificativo Aerogeneratore
-  Punto battuto e relativa quota terreno
-  Curve di livello intervallo 2,00 mt.
-  Curve di livello intervallo 10,00 mt.
-  Strada esistente
-  Fosso esistente



Regione Puglia



Provincia di Bari

---

Comittente: ALTA WIND S.R.L.  
Piazza Europa 14  
87100 Cosentino (CS) - Italy  
Tel. centralino +39 0984 408608

---

Documento: **PROGETTO DEFINITIVO**  
TITOLO del Progetto: **PARCO EOLICO "ALTAMURA"**

---

Elaborato: **Rilievo Topografico - Tav. 02**

PROGETTO	DISCIPLINA	AMBITO	TIPO ELABORATO	PROGRESSIVO	SCALA
E-ALT	P	CP	PR	02	1:2000

---

Nome File: E-ALT-P-CP-PR-02\_Rilievo Topografico - Tav 02

---

Progettazione:

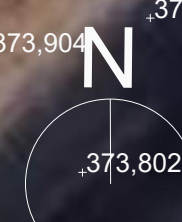


Ing. Saverio Pagliuso

Ing. Mario Francesco Perri

---

Ing. Giorgio Salatino



N  
373,802

---

Rev.	Data Revisione	Descrizione Revisione	Redatto	Controllato	Approvato
00	MAGGIO 2024	PRIMA EMISSIONE	ES	GEMSA PRO	ALTA WIND