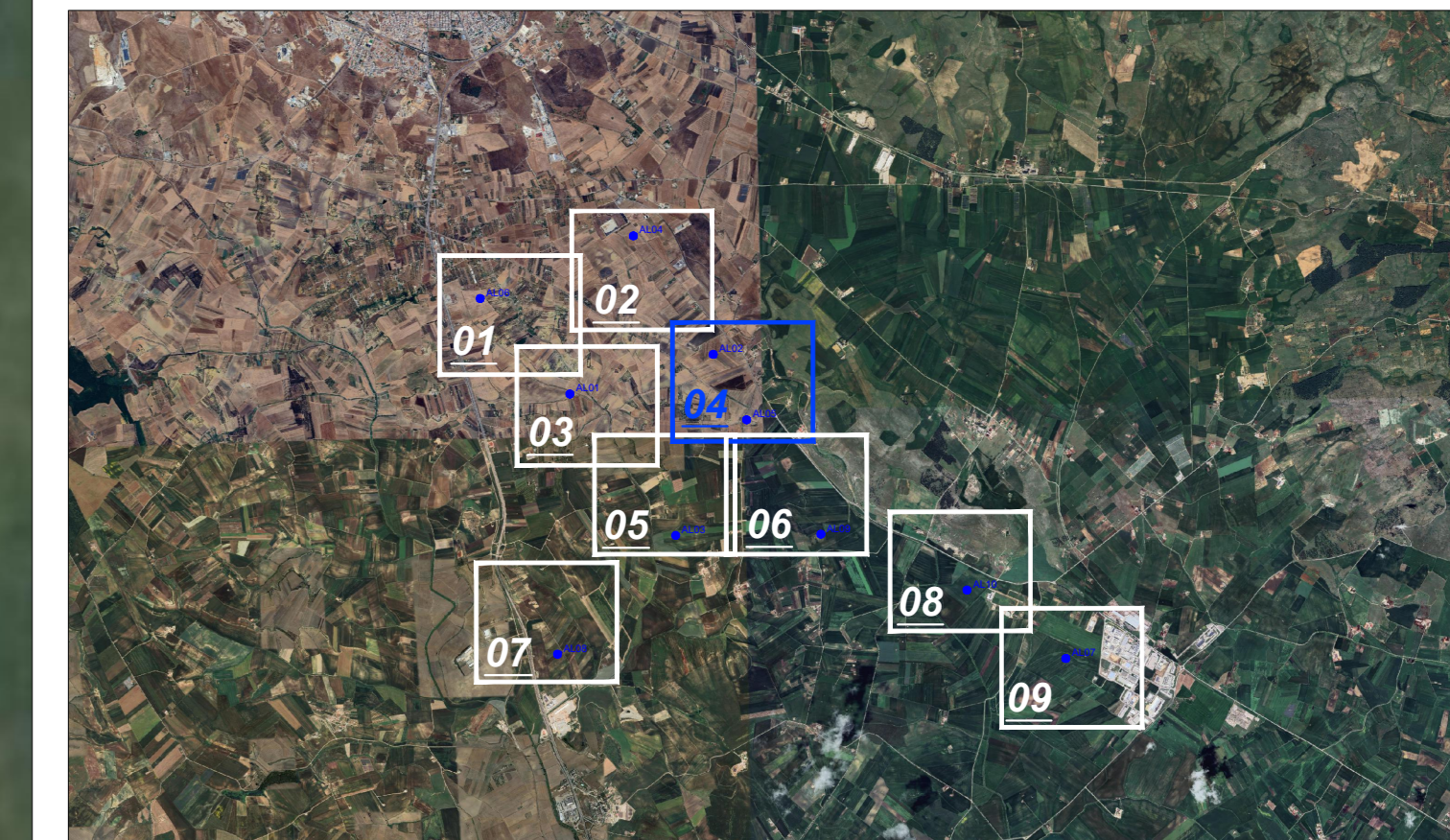
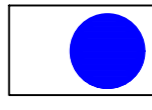

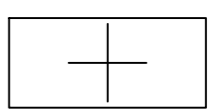
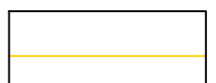
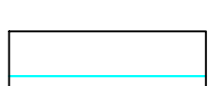
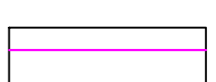
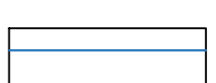
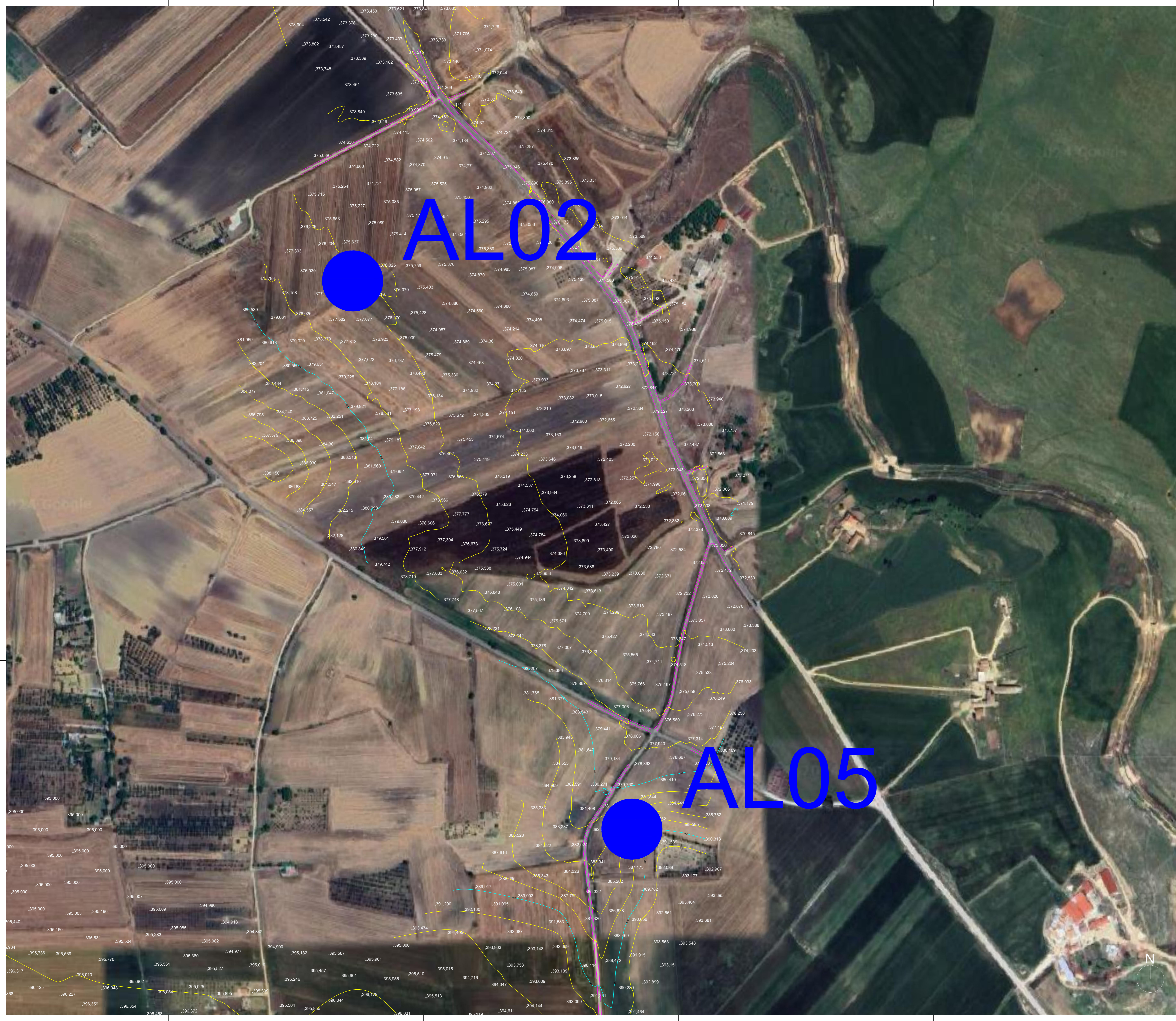


Key-Map 1:100.000



Legenda

-  Posizione Aerogeneratori
-  Identificativo Aerogeneratore
-  Punto battuto e relativa quota terreno
-  Curve di livello intervallo 2,00 mt.
-  Curve di livello intervallo 10,00 mt.
-  Strada esistente
-  Fosso esistente



					
Comittente:		ALTA WIND S.R.L. Piazza Europa, 14 87100 Cossenza (CS) - Italy Tel. centralino +39 0984 408608			
Documento:					
PROGETTO DEFINITIVO					
Titolo del Progetto:					
PARCO EOLICO "ALTAMURA"					
Elaborato:					
Rilievo Topografico - Tav. 04					
CODICE PRATICA: TAI4HV3					
PROGETTO	DISCIPLINA	AMBITO	TIPO ELABORATO	PROGRESSIVO	SCALA
E_ALT	P	CP	PR	04	1:2000
NOME FILE: E-ALT-P-CP-PR-04_Rilievo Topografico - Tav 04					
Progettazione:					
Ing. Saverio Pagliuso					
					
Ing. Mario Francesco Perri					
Ing. Giorgio Salatino					
Rev.	Data Revisione	Descrizione Revisione	Redatto	Controllato	Approvato
00	MAGGIO 2024	PRIMA EMISSIONE	ES	GEMSA PRO	ALTA WIND