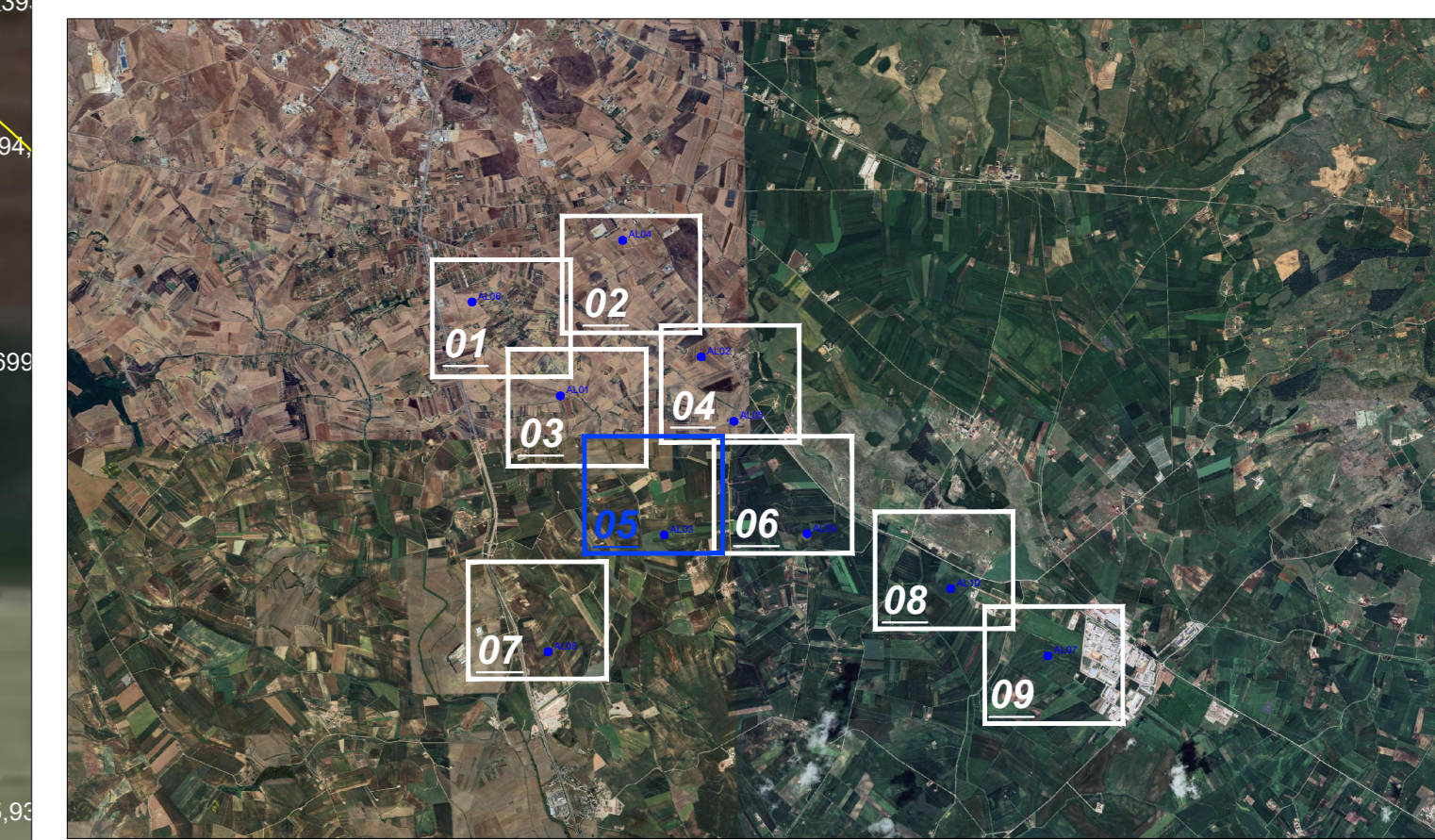
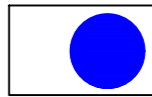

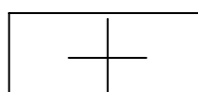
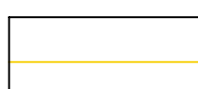
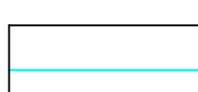
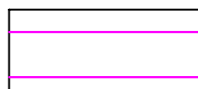
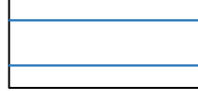
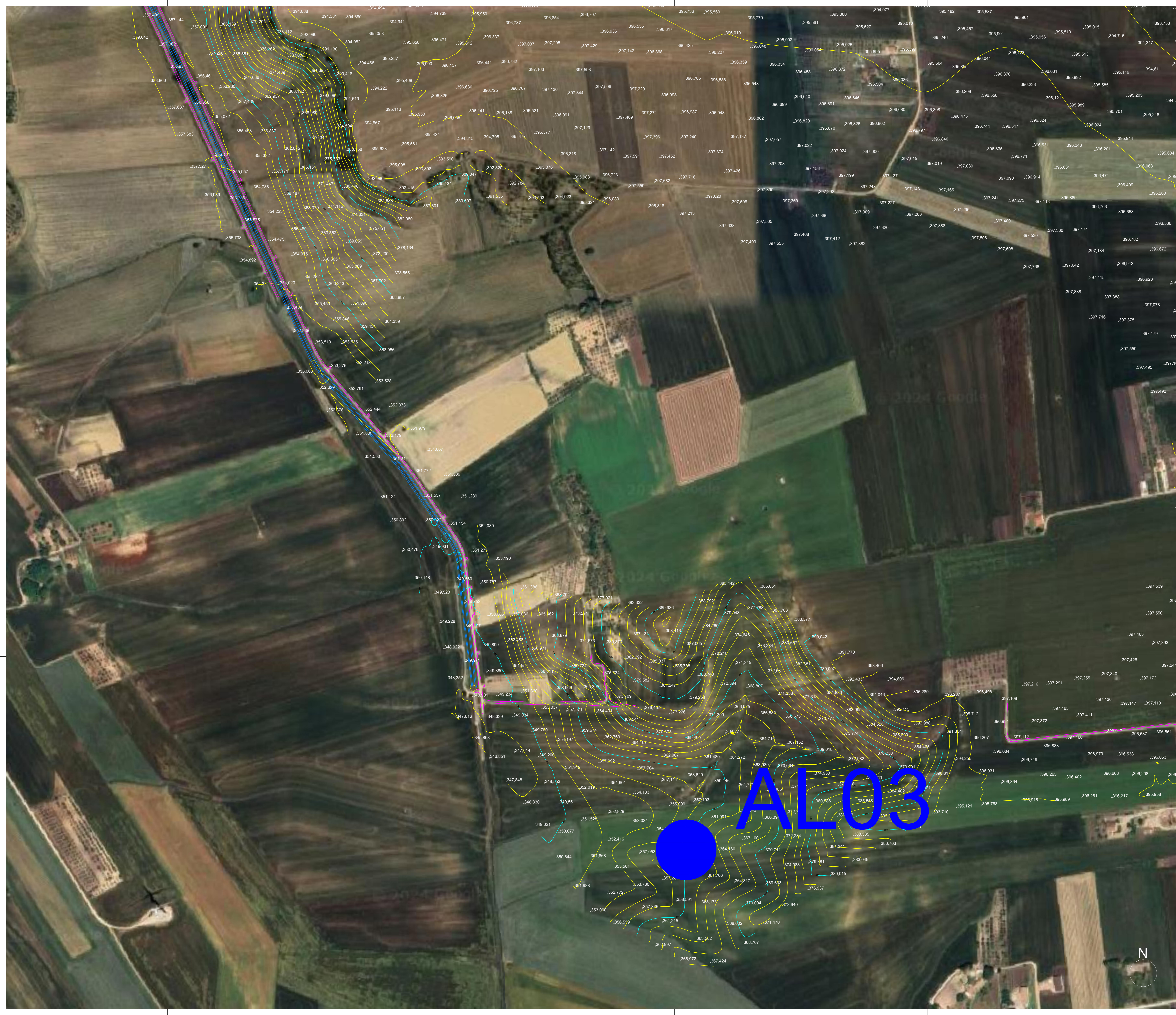



Key-Map 1:100.000




Legenda

-  Posizione Aerogeneratori
-  Identificativo Aerogeneratore
-  Punto battuto e relativa quota terreno
-  Curve di livello intervallo 2,00 mt.
-  Curve di livello intervallo 10,00 mt.
-  Strada esistente
-  Fosso esistente





Regione Puglia



Provincia di Bari

Comittente: ALTA WIND S.R.L.
Piazza Europa, 14
87100 Cosenza (CS) - Italy
Tel. centralino +39 0984 408608

Documento: **PROGETTO DEFINITIVO**


Titolo del Progetto: **PARCO EOLICO "ALTAMURA"**

Elaborato: **Rilievo Topografico - Tav. 05**

PROGETTO	DISCIPLINA	AMBITO	TIPO ELABORATO	PROGRESSIVO	SCALA
E_ALT	P	CP	PR	05	1:2000

Nome File: E-ALT-P-CP-PR-05_Rilievo Topografico - Tav 05

Progettazione:



Ing. Saverio Pagliuso

Ing. Mario Francesco Perri

Ing. Giorgio Salatino

Rev.	Data Revisione	Descrizione Revisione	Redatto	Controllato	Approvato
00	MAGGIO 2024	PRIMA EMISSIONE	ES	GEMSA PRO	ALTA WIND