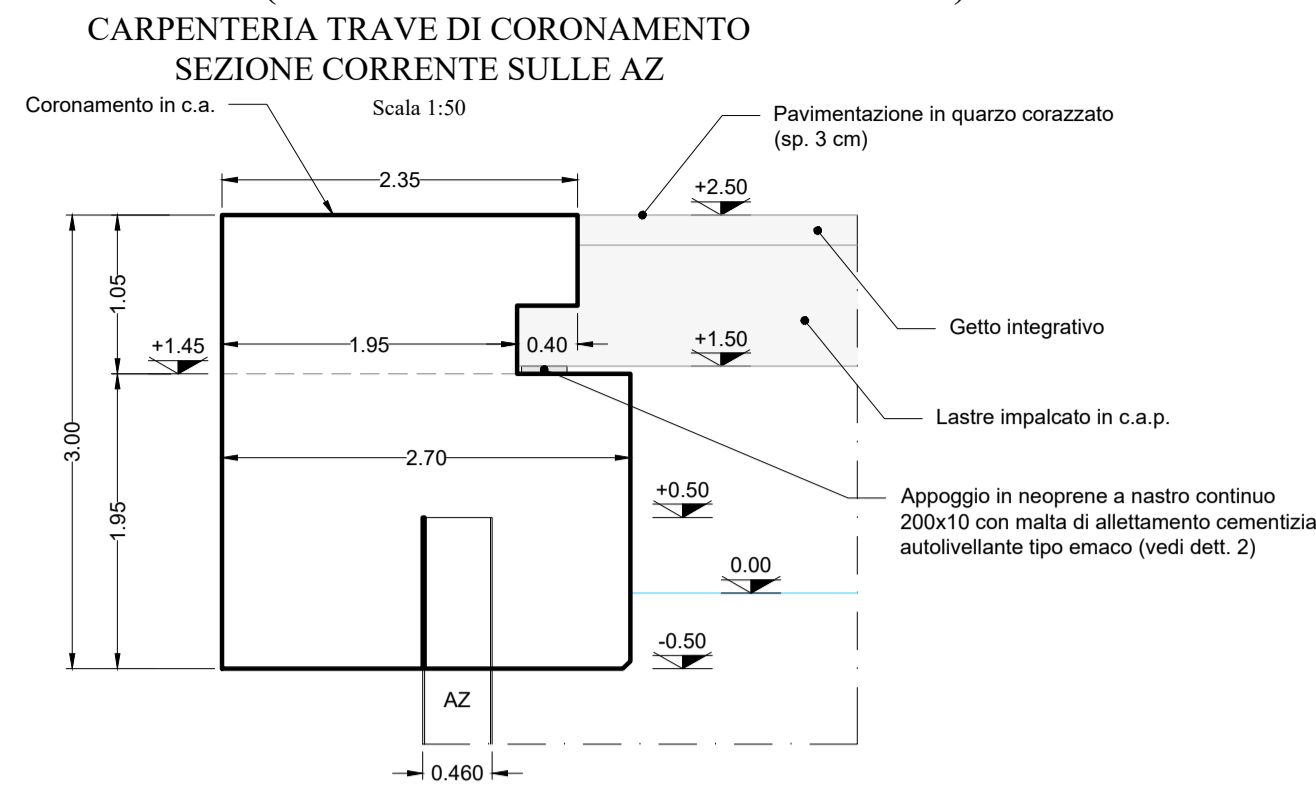
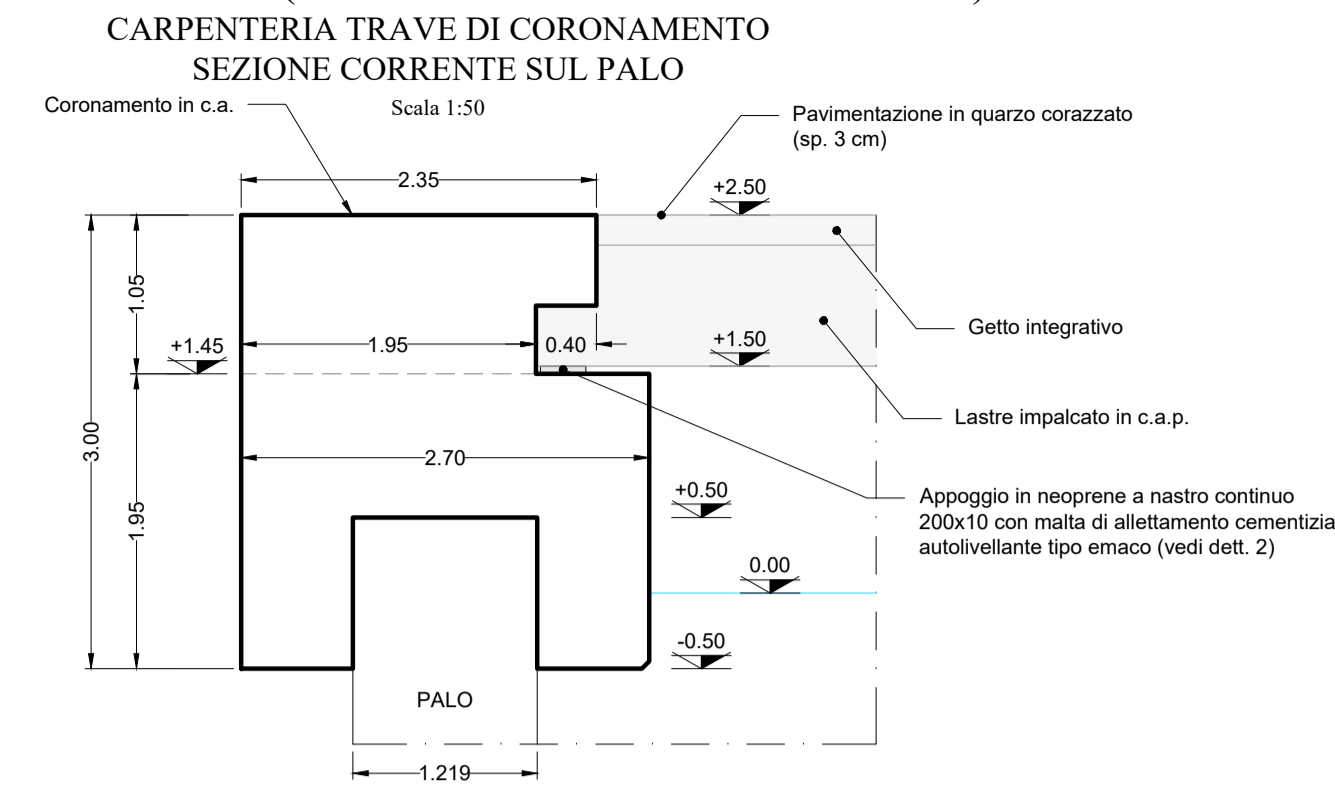


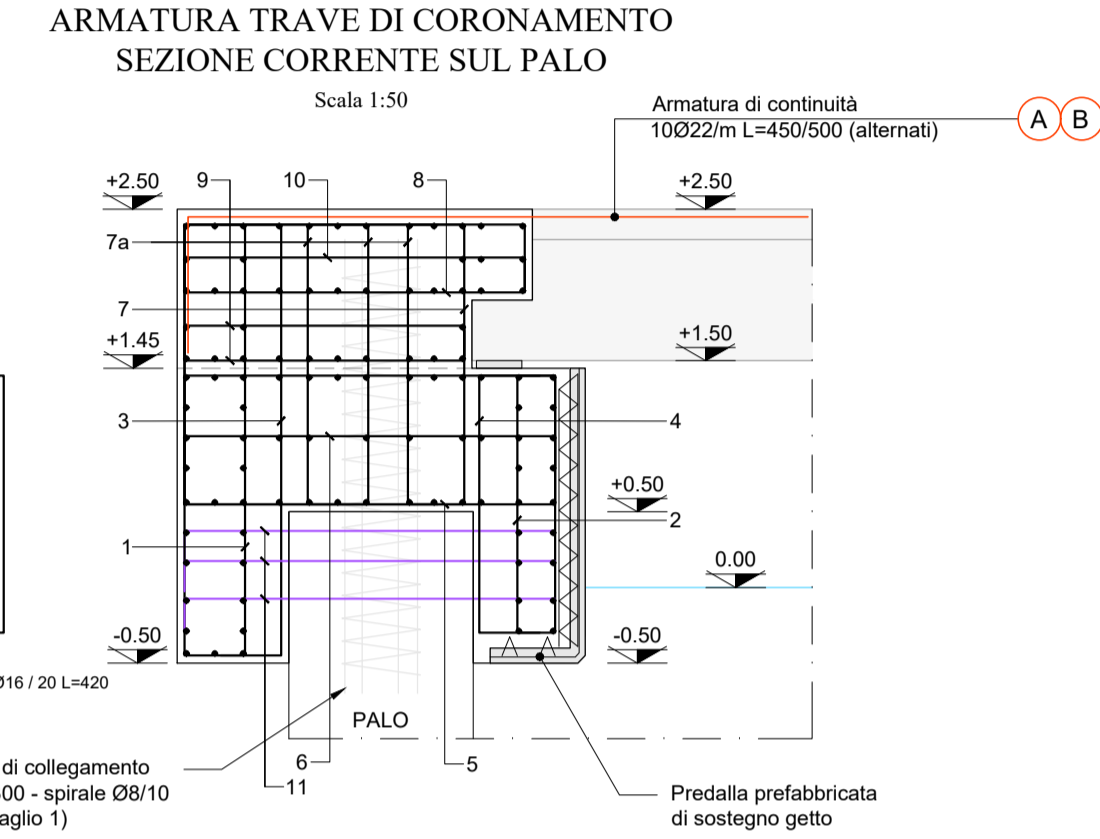
CANALE MELARA (BANCHINA DESTRA IDRAULICA)



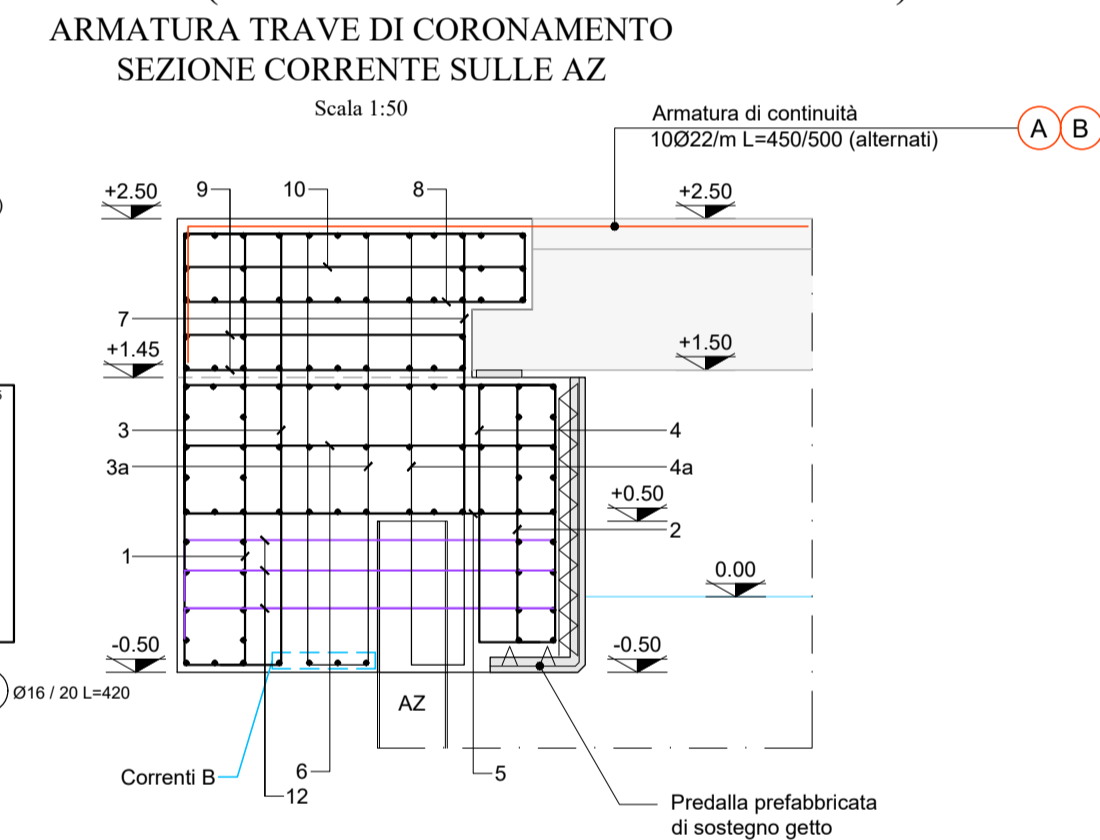
CANALE MELARA (BANCHINA DESTRA IDRAULICA)



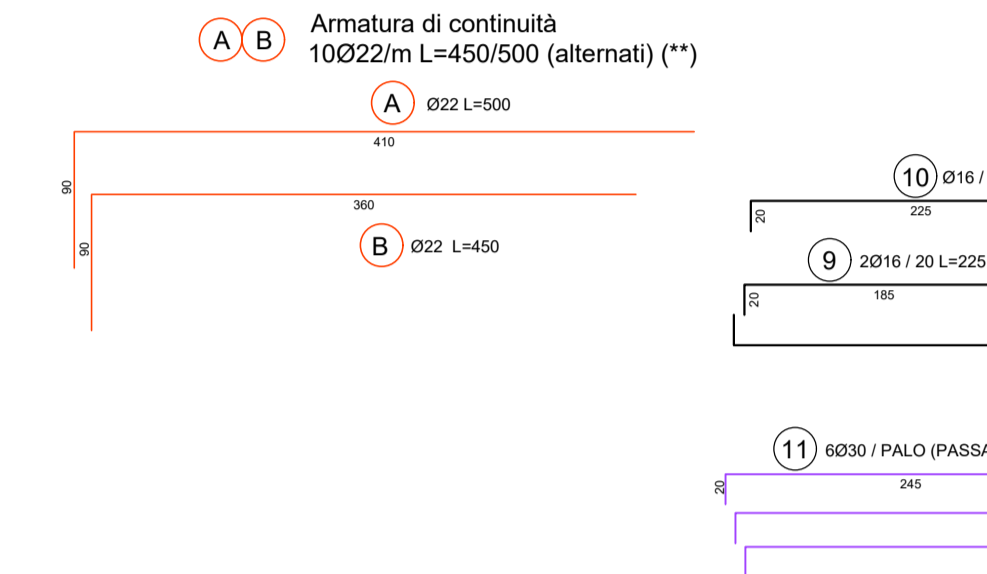
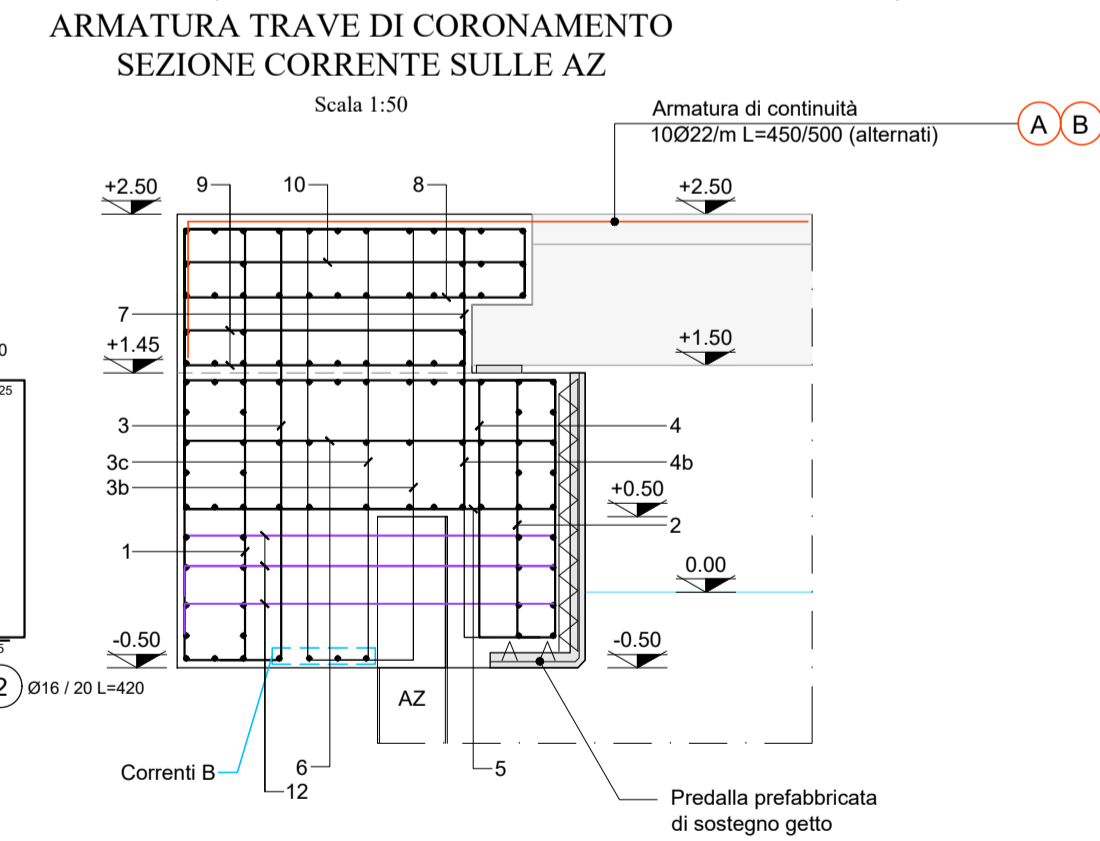
CANALE MELARA (BANCHINA DESTRA IDRAULICA)



CANALE MELARA (BANCHINA DESTRA IDRAULICA)

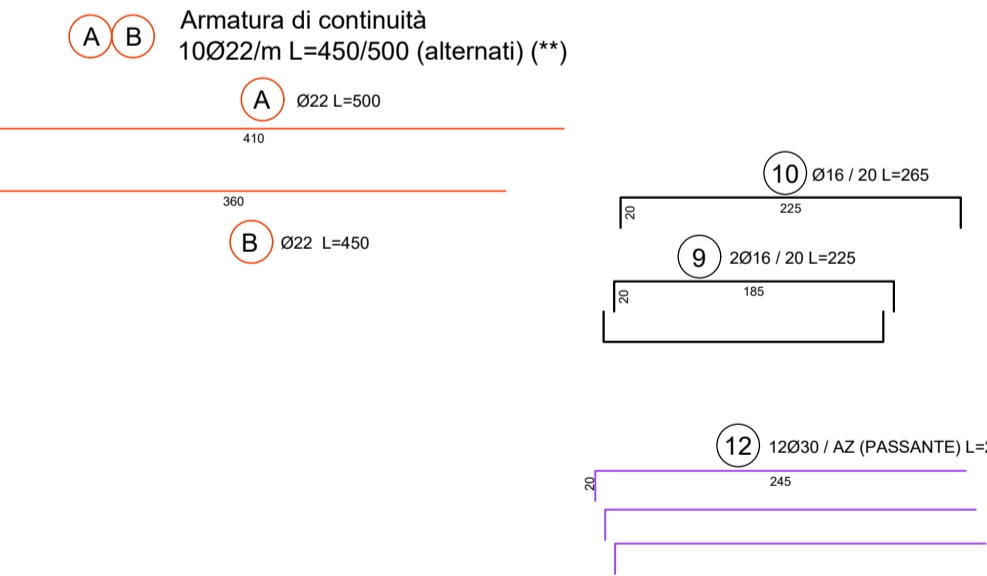
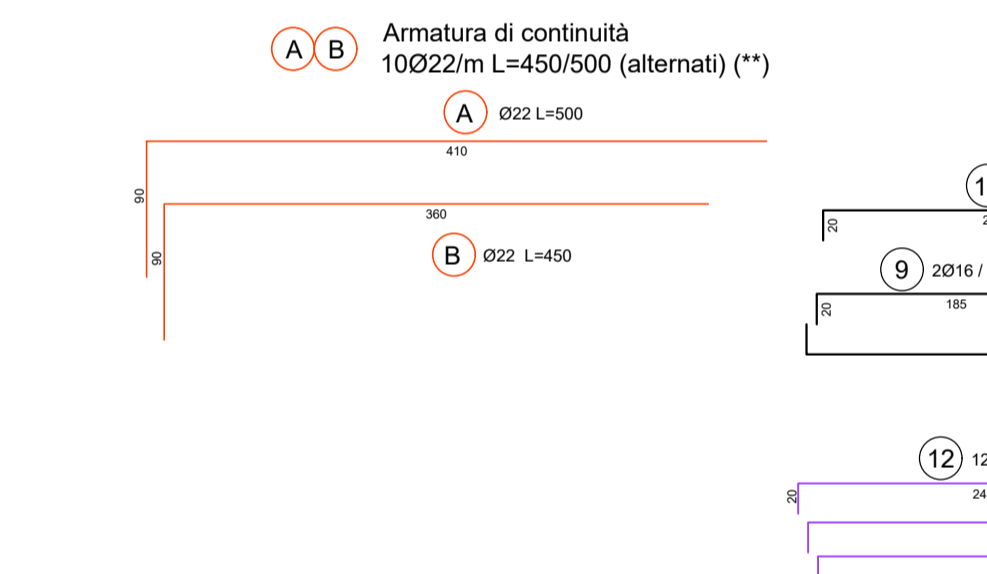


CANALE MELARA (BANCHINA DESTRA IDRAULICA)

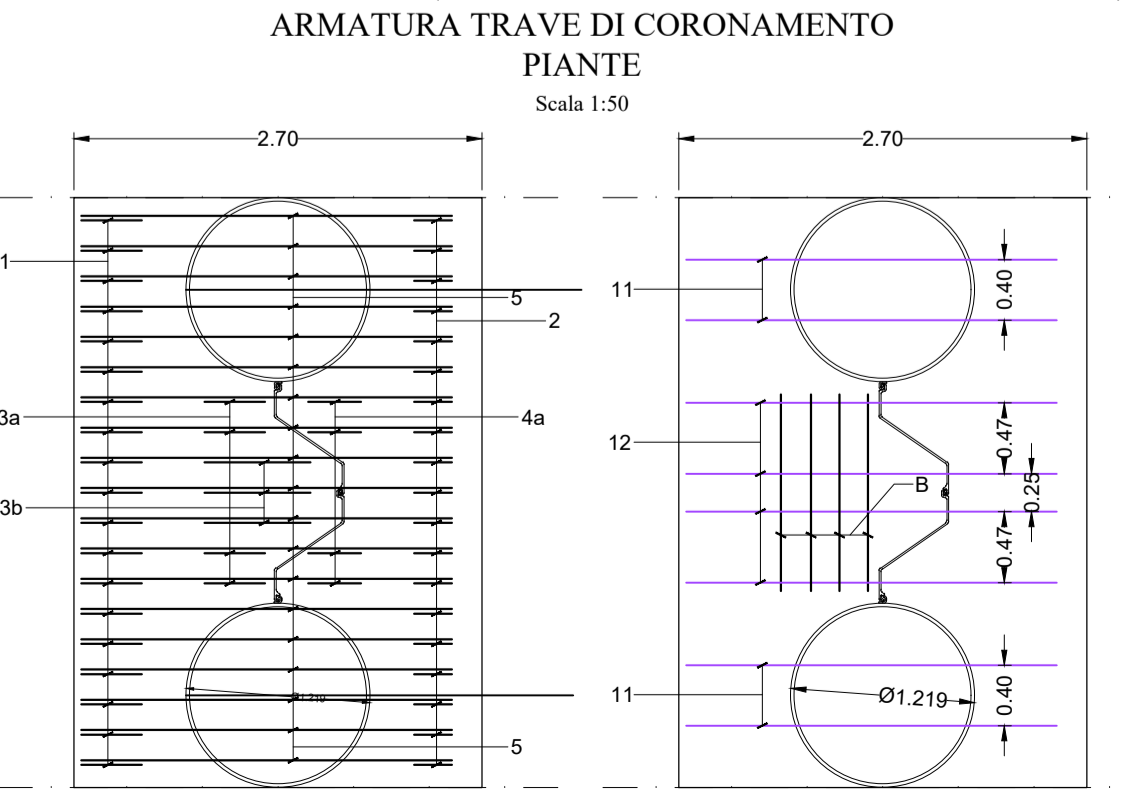


NOTA (**)
Per i dettagli dell'armatura di collegamento e dell'armatura presente nel getto di completamento della porzione di impalcato sopra le travi in c.a.p. (armature entranti nella trave) vedere gli elaborati specifici degli impalcati

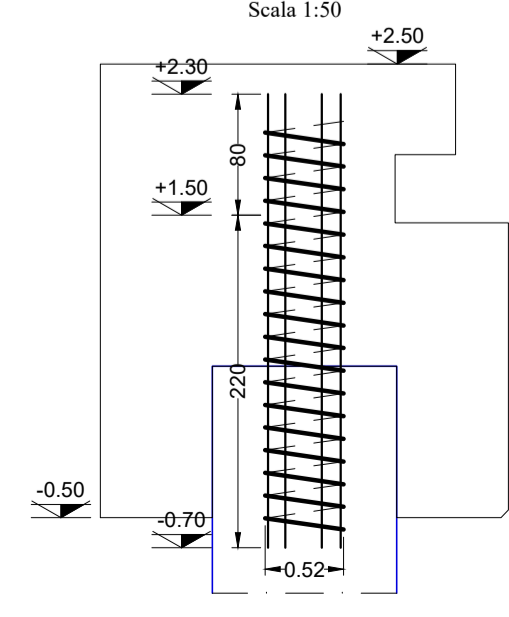
NOTA
Armatura ferri correnti Ø16
sovrapposizione minima 50Ø
(le lunghezze dei ferri sono espresse in cm)



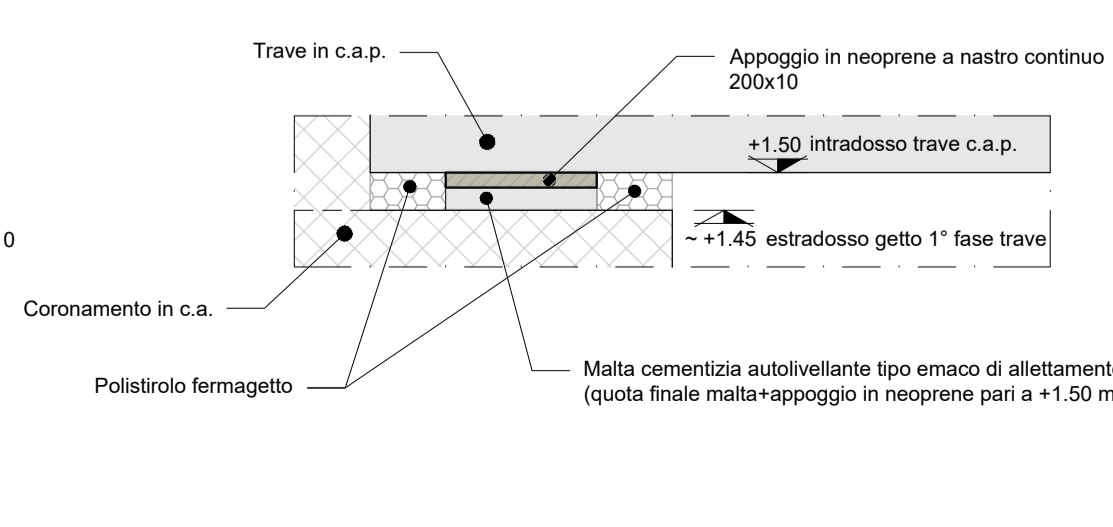
CANALE MELARA (BANCHINA DESTRA IDRAULICA)



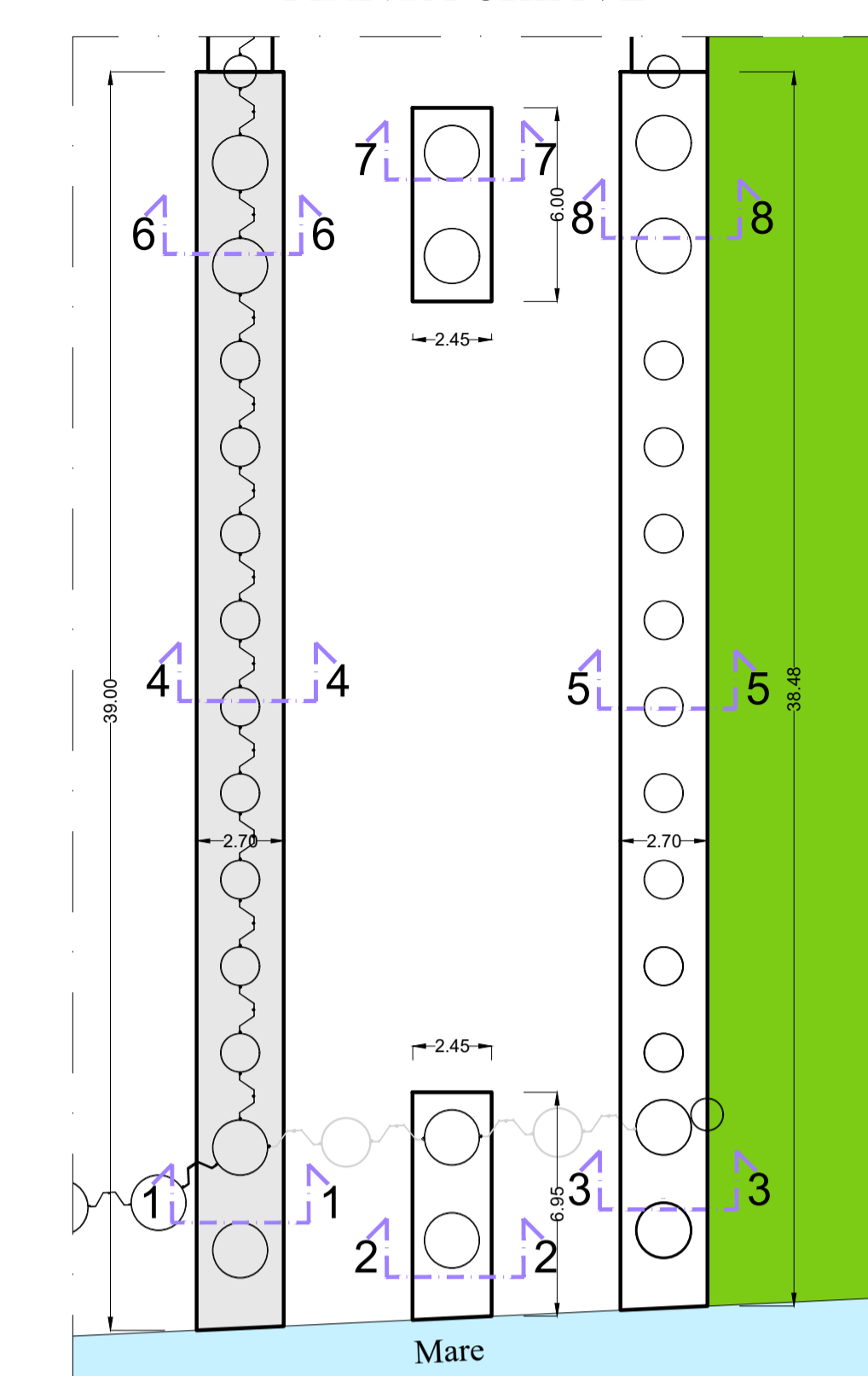
DETTAGLIO 1



DETTAGLIO 2



PIANTA CHIAVE



LEGENDA
— Stato di fatto
— Stato di progetto



PROGETTO ESECUTIVO

TITOLO ELABORATO
**NUOVA BANCHINA RAVANO
ATTRAVERSAMENTO FOSSO MELARA
TRAVI CORONAMENTO PALI - SEZIONE 4-4**

CODICE ELABORATO
21 08 PE TC17 00

Rev.	Data	Causale
0	05/05/2023	Emissione finale per verificatore
1		
2		
3		

IL COMMITTENTE
LSCT S.p.a.
Via S. Bartolomeo, 20
01126 - La Spezia (SP)
C.F. 0072600115 - P.IVA 0087500114

IL PROGETTISTA
Modimar Project S.r.l.
Via Asmara, 72 - 00199 Roma (RM)
P. IVA 16016151009

Geotechnical Engineering Services S.r.l.
GES - Geotechnical Engineering Service S.r.l.
Via Sandro Totti, 7/A - 60131 Ancona (AN)
P. IVA 02524340420

CielEquipe - Studio Tecnico Associato
Via Sandro Pertini, 55 - 62029 Tolentino (MC)
P. IVA 00817500432

Disegnato:	Controllato:	Approvato:
Balducci	Sanzone	Tartaglini

Note: