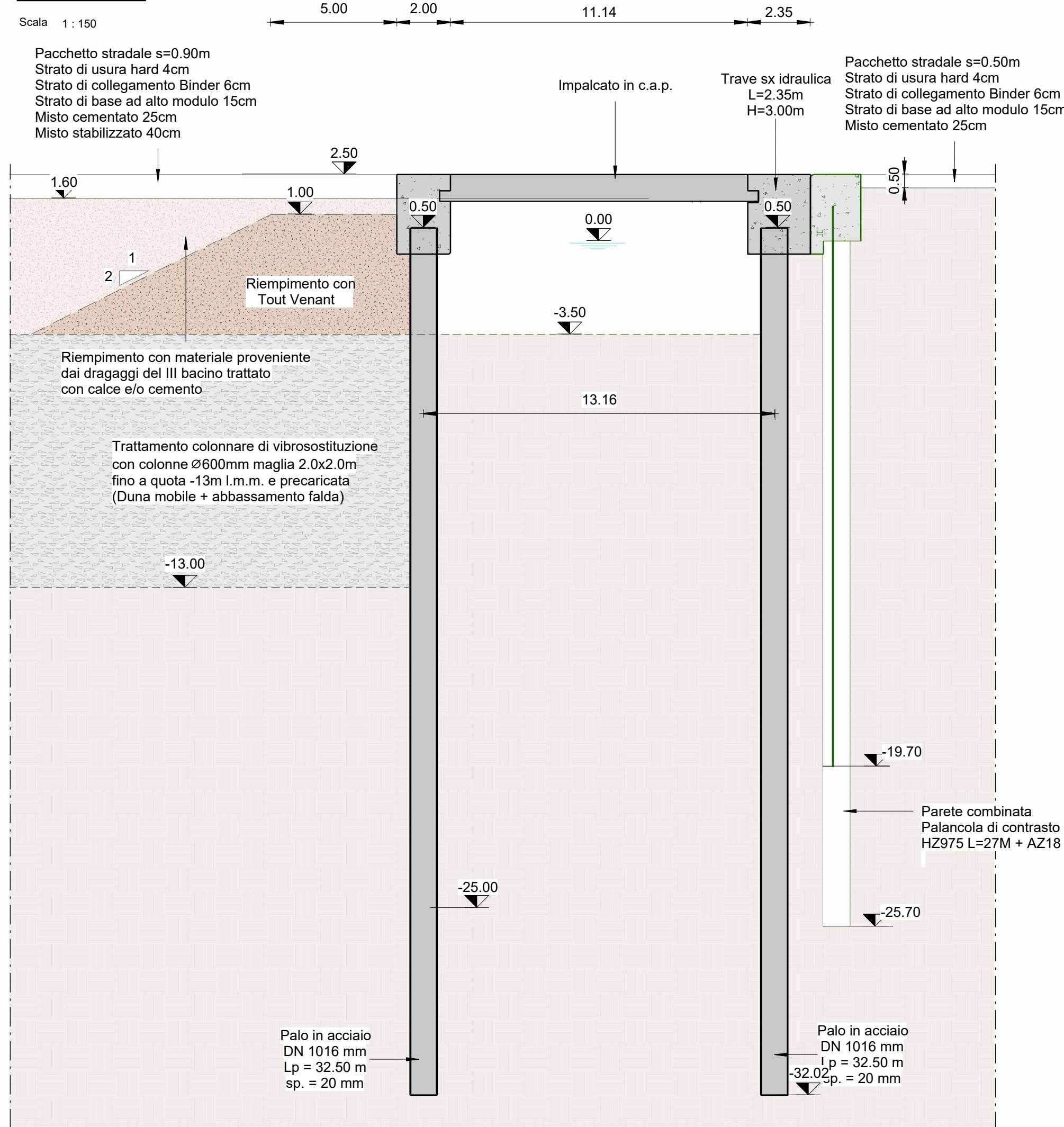
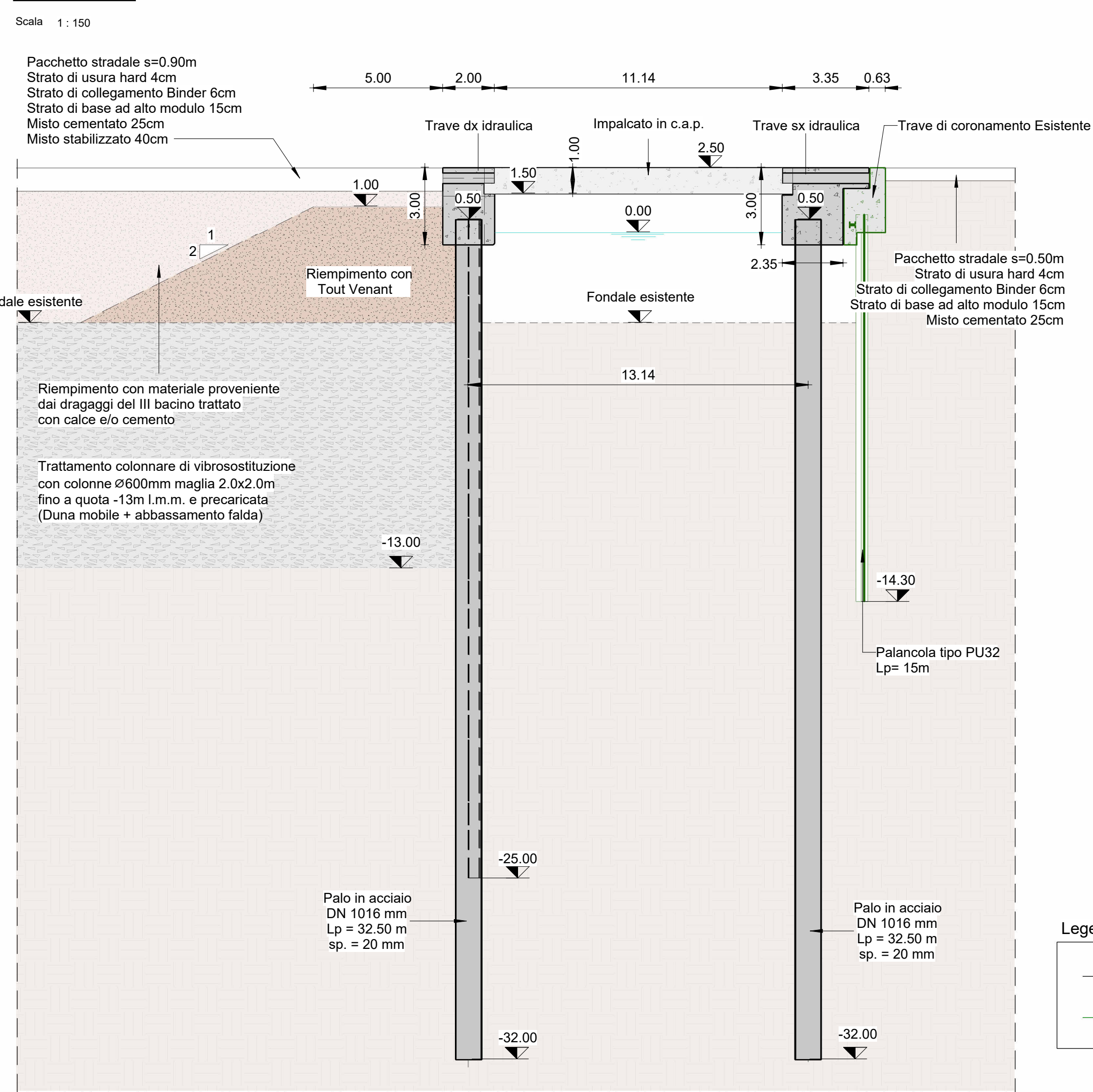


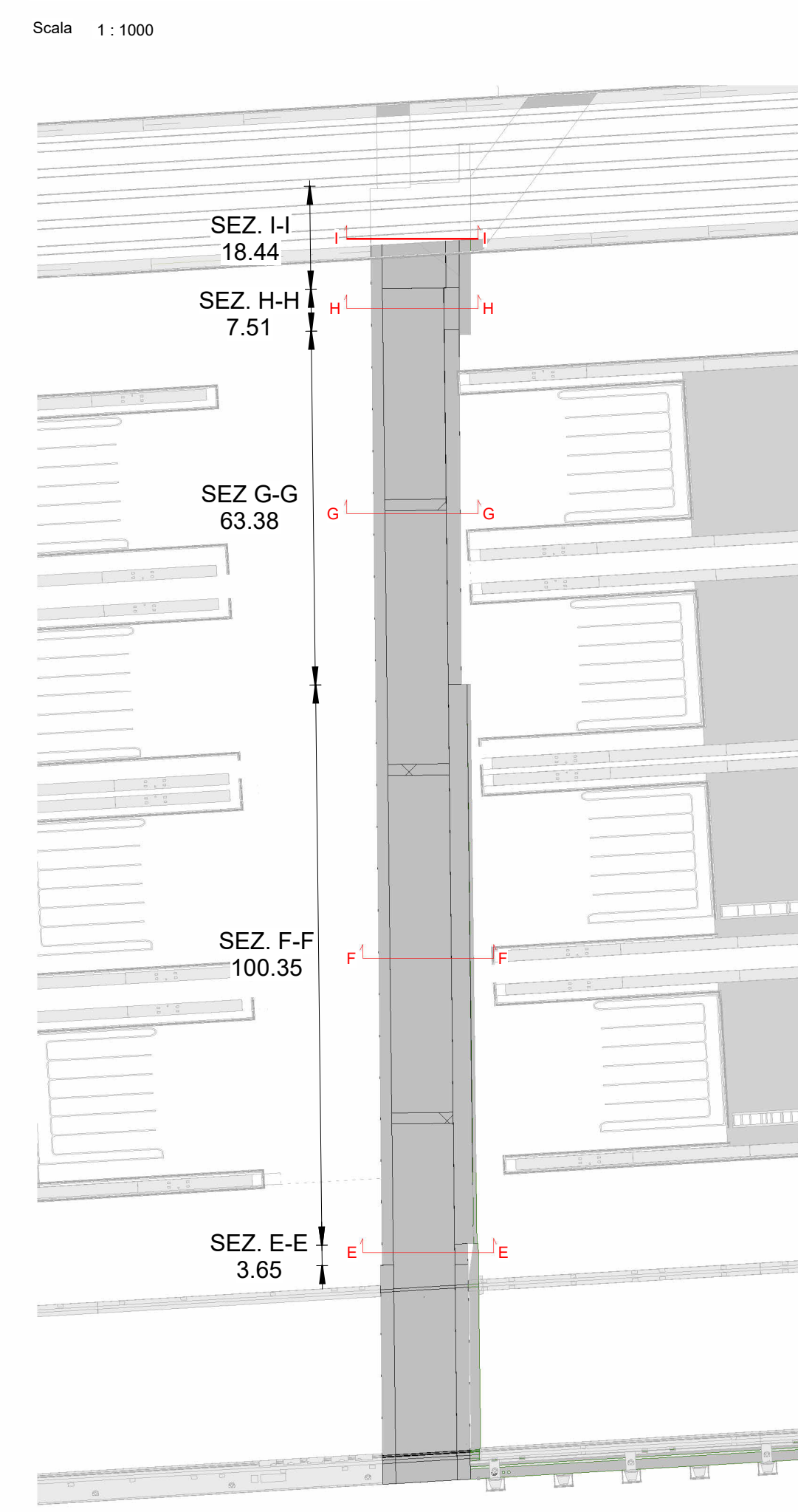
Sezione E-E



Sezione F-F



Pianta chiave - sezioni tipo

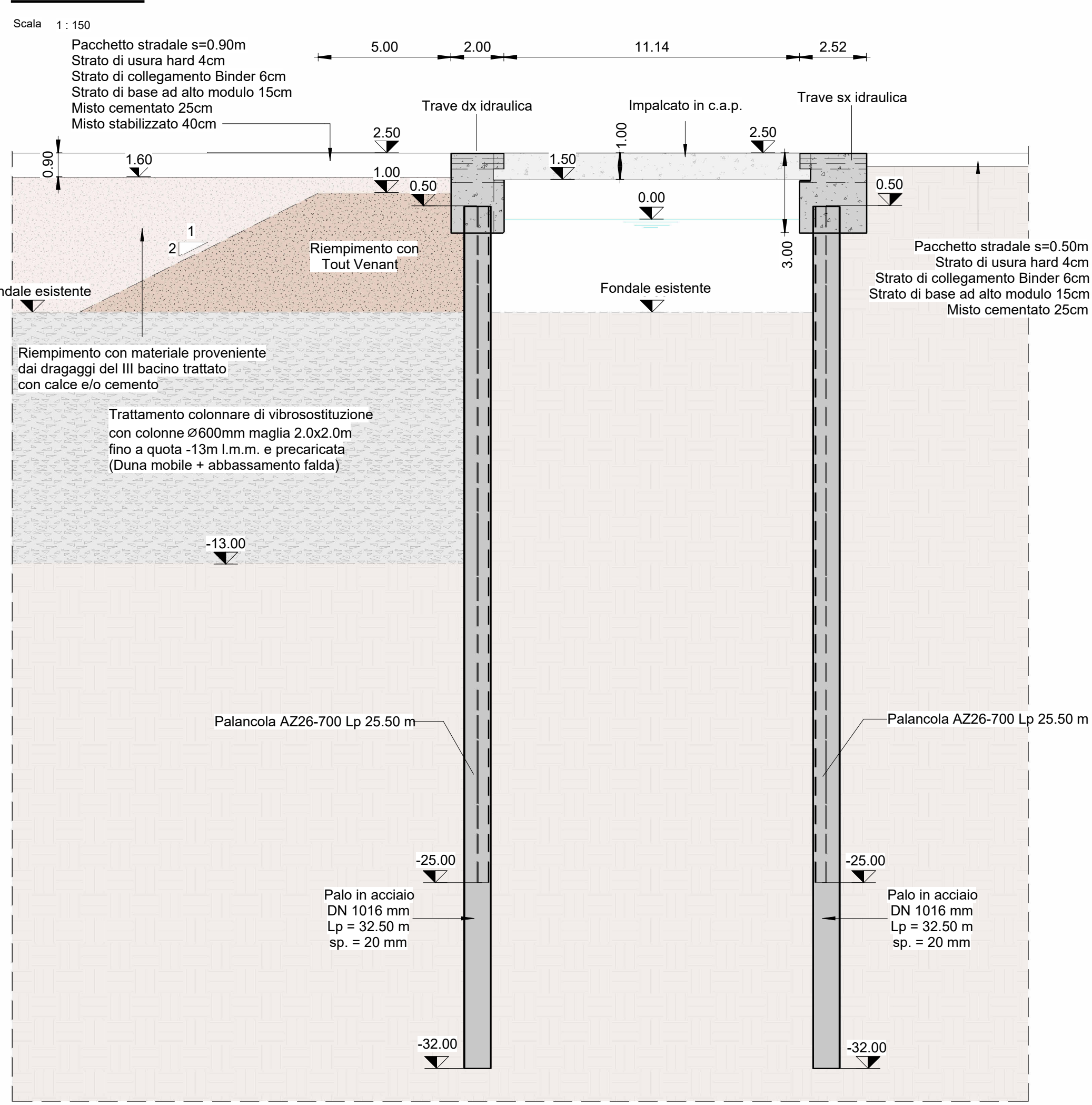


Legenda

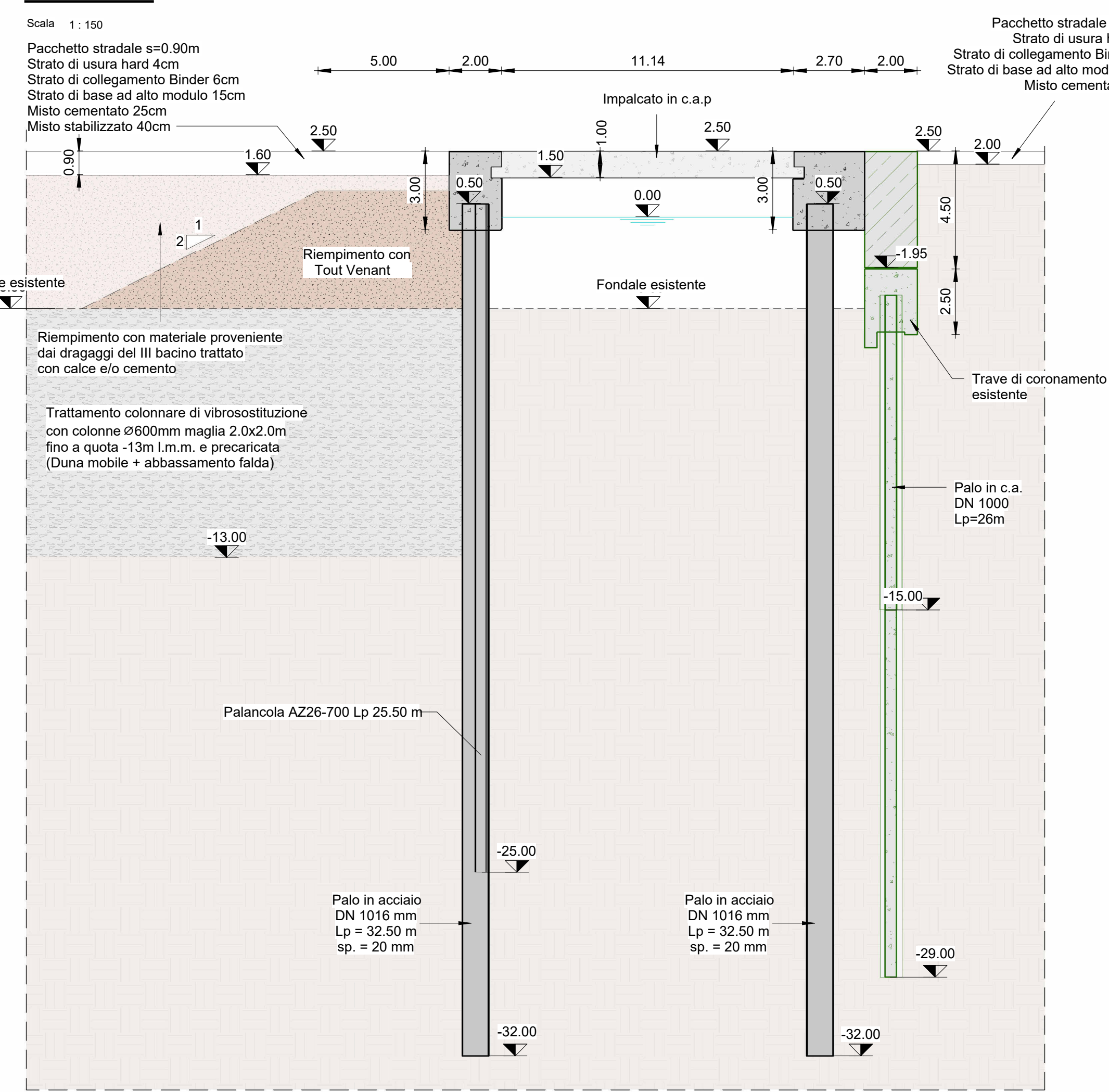
— Stato di progetto

— Stato di fatto

Sezione G-G




Sezione H-H





**LA SPEZIA
CONTAINER TERMINAL**





PORTO DI LA SPEZIA
AMPLIAMENTO TERMINAL RAVANO

PROGETTO ESECUTIVO

TITOLO ELABORATO

Prolungamento Fosso Melara - Sezioni trasversali da E-E A H-H - Stato di progetto

CODICE ELABORATO

21 08 PE TG06 0

SCALA

Come indicato


Rev.	Data	Causale
0	05/05/2023	Emissione finale per verificatore

IL COMMITTENTE




LSCT S.p.a.
Viale San Bartolomeo, 20
19126 - La Spezia (SP)
C.F. 0007290115 - P.IVA 00639620114

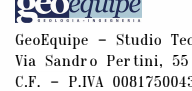
IL PROGETTISTA



Modimor Project S.r.l.
Modimor Project S.r.l.
Via Annara, 72
00100 - Roma (RM)
C.F. - P.IVA 0906151009



Geotechnical Engineering Services S.p.A.
Via Sandro Tatti, 7/A - 60131 Ancona (AN)
C.F. - P.IVA 0529180420



Geotecnica - Studio Tecnico Associato
Via Sandro Perini, 55 - 62029 Tolentino (MC)
C.F. - P.IVA 0081750432

DIMENSIONI FOGLIO

A1

Disegnato: Corinaldesi

Controllato: Sanzone

Approvato: Tartagliani

Note: