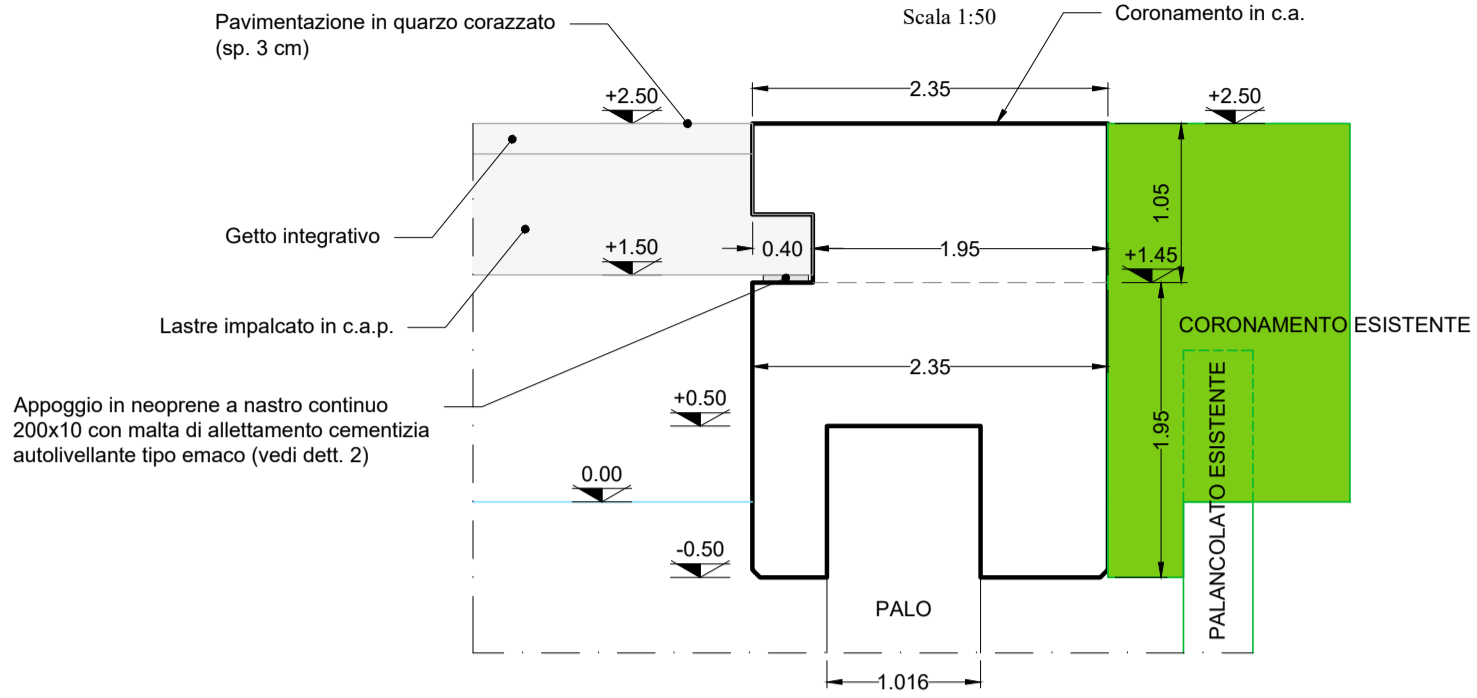


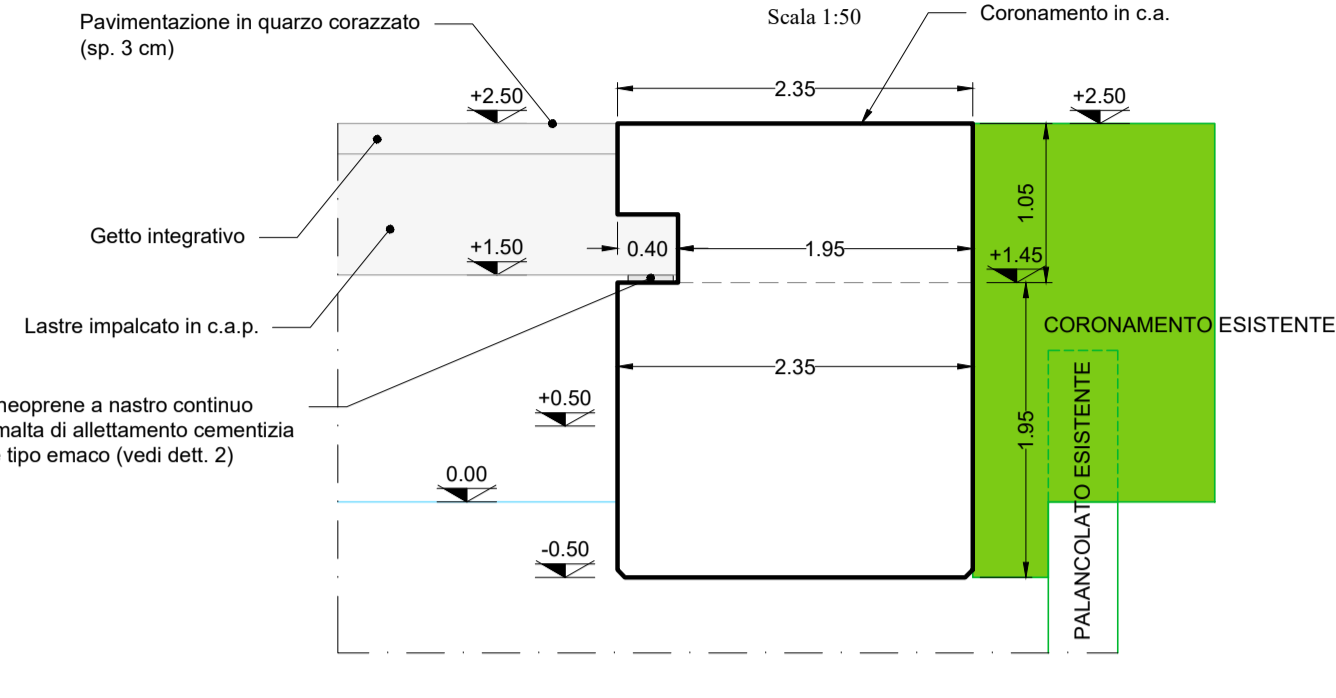
CANALE MELARA (BANCHINA SINISTRA IDRAULICA)

CARPENTERIA TRAVE DI CORONAMENTO  
SEZIONE CORRENTE SUL PALO



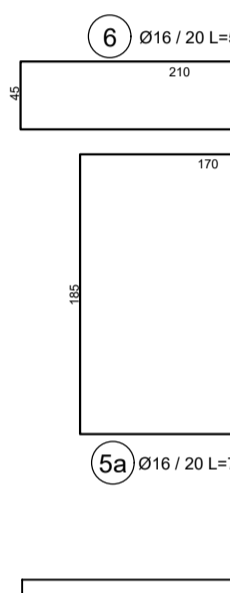
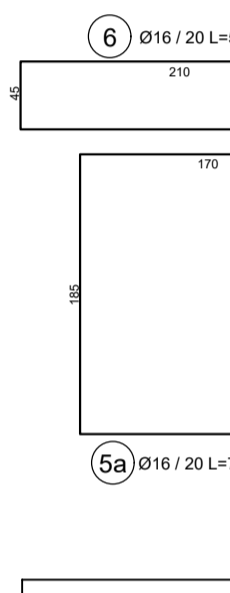
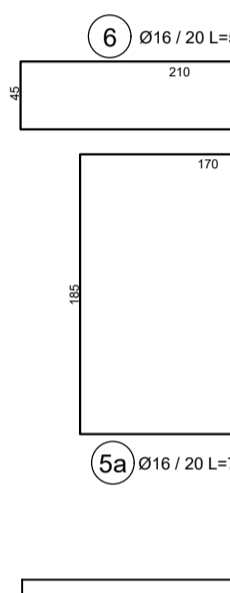
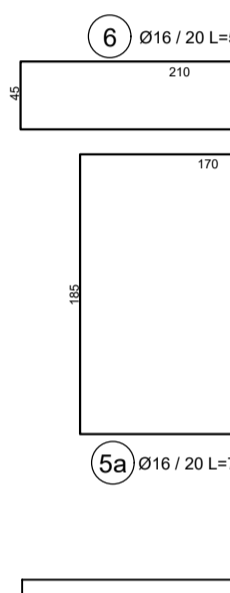
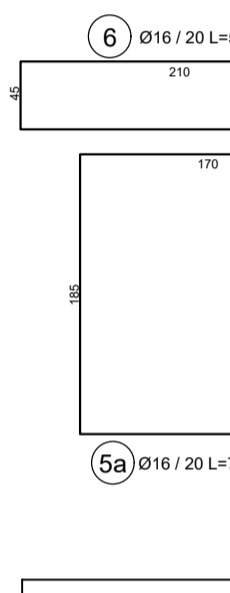
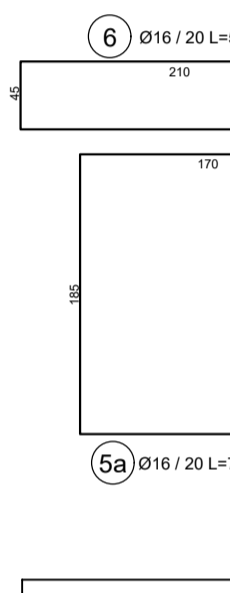
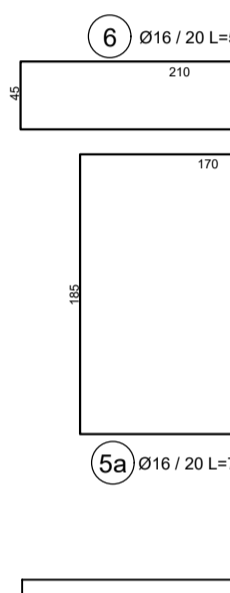
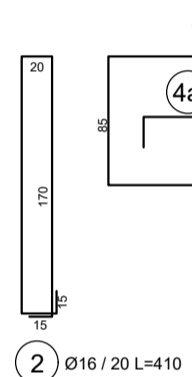
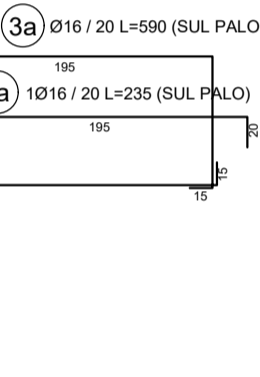
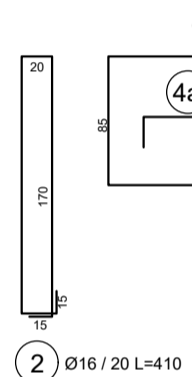
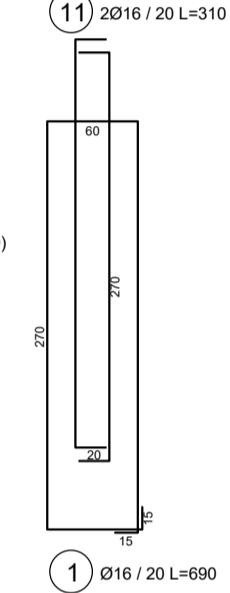
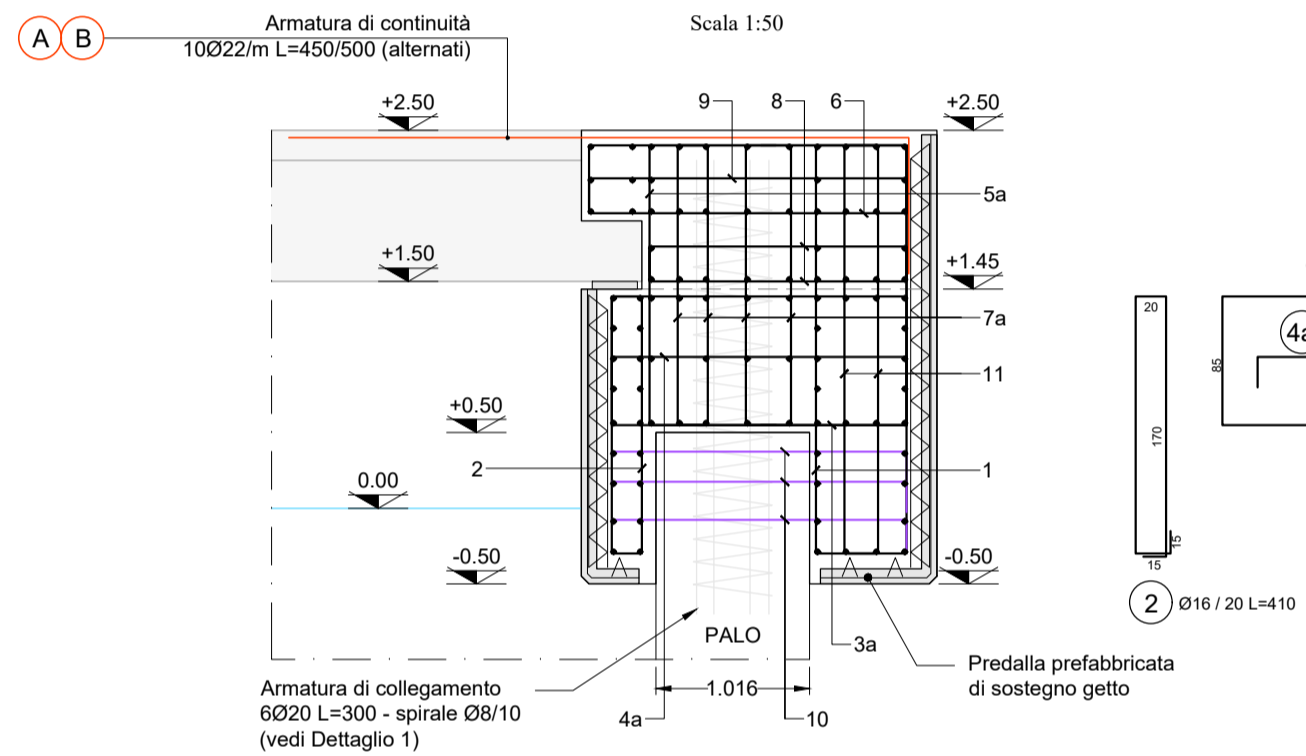
CANALE MELARA (BANCHINA SINISTRA IDRAULICA)

CARPENTERIA TRAVE DI CORONAMENTO  
SEZIONE CORRENTE SENZA PALO



CANALE MELARA (BANCHINA SINISTRA IDRAULICA)

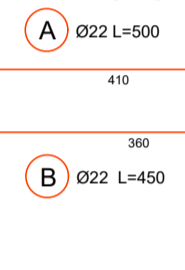
ARMATURA TRAVE DI CORONAMENTO  
SEZIONE CORRENTE SUL PALO



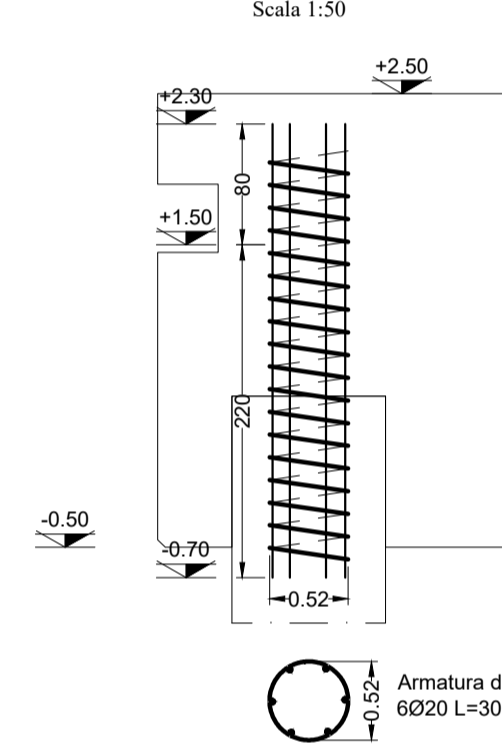
NOTA  
Armatura ferri correnti Ø16  
sovrapposizione minima 500  
(le lunghezze dei ferri sono espresse in cm)  
Tutte le armature sono zincate a caldo

NOTA (\*\*)  
Per i dettagli dell'armatura di collegamento e dell'armatura presente nel getto di completamento della porzione di impalcato sopra le travi in c.a.p. (armature entranti nella trave) vedere gli elaborati specifici degli impalcati

Armatura di continuità  
10Ø22/m L=450/500 (alternati) (\*\*)

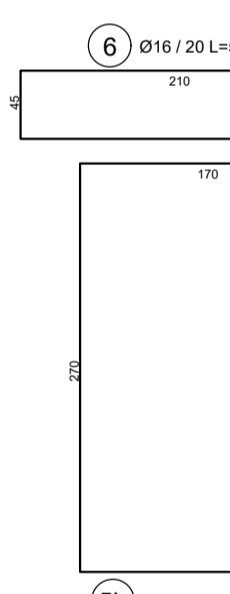
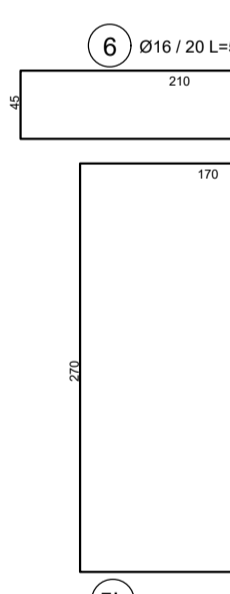
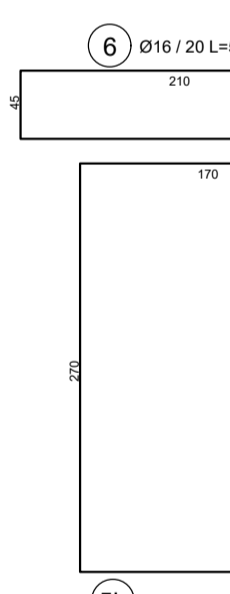
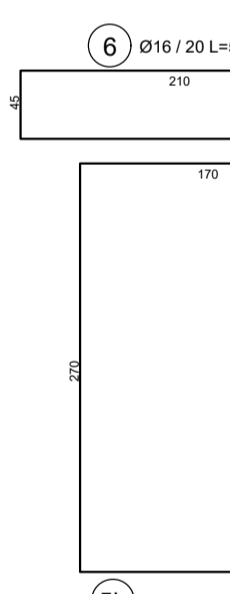
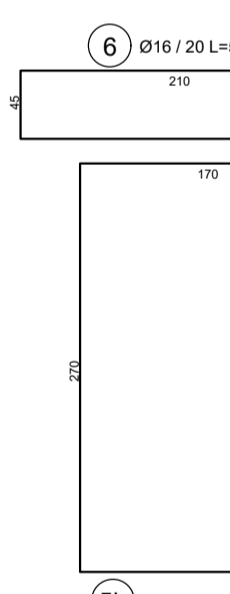
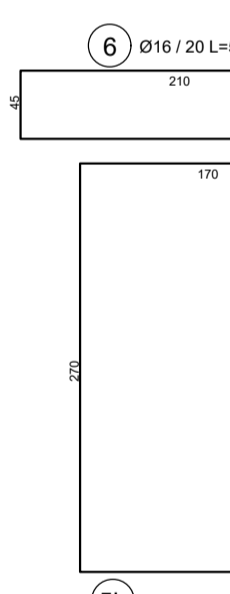
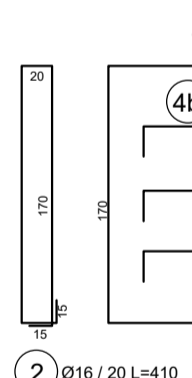
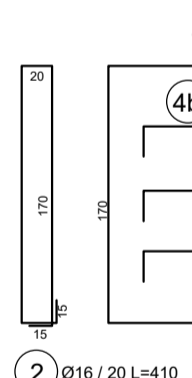
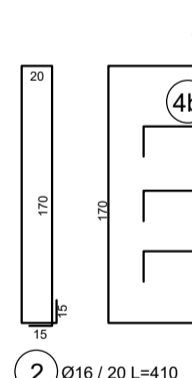
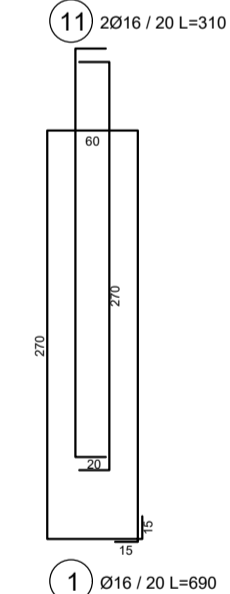
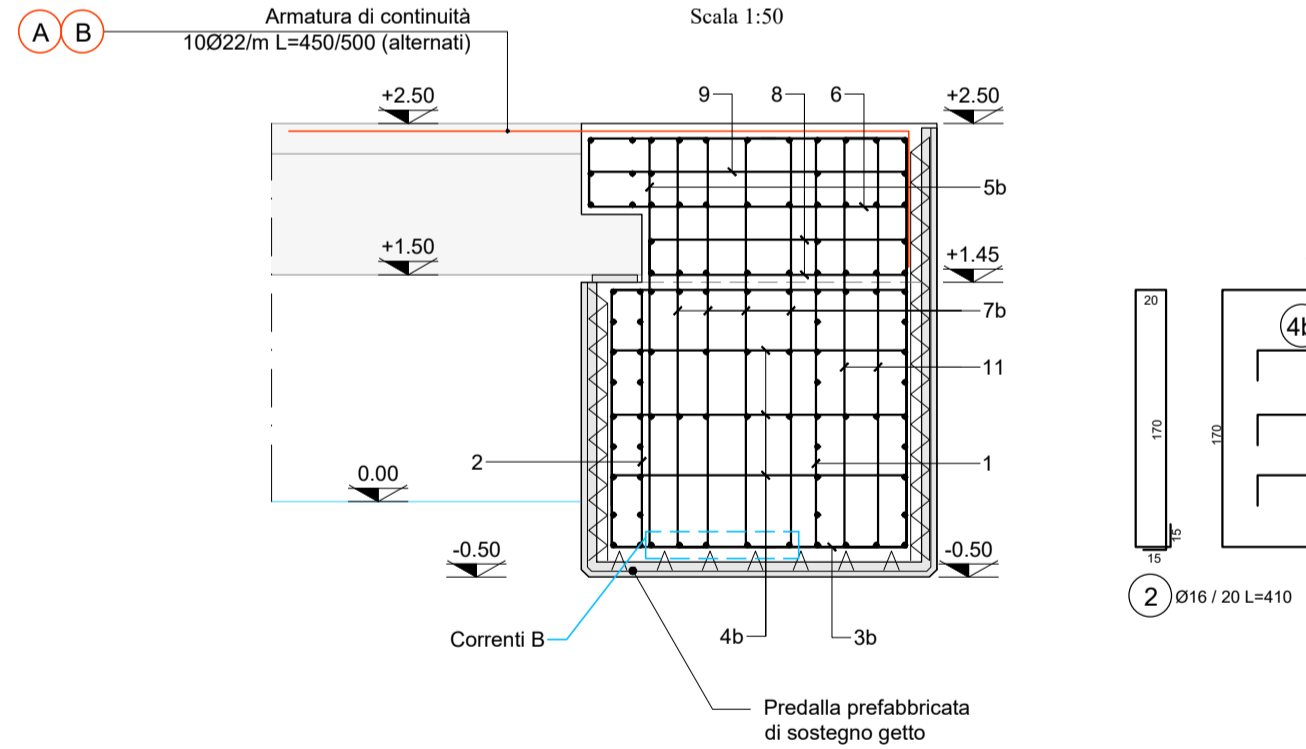


DETTAGLIO 1  
Scala 1:50

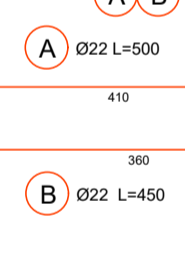


CANALE MELARA (BANCHINA SINISTRA IDRAULICA)

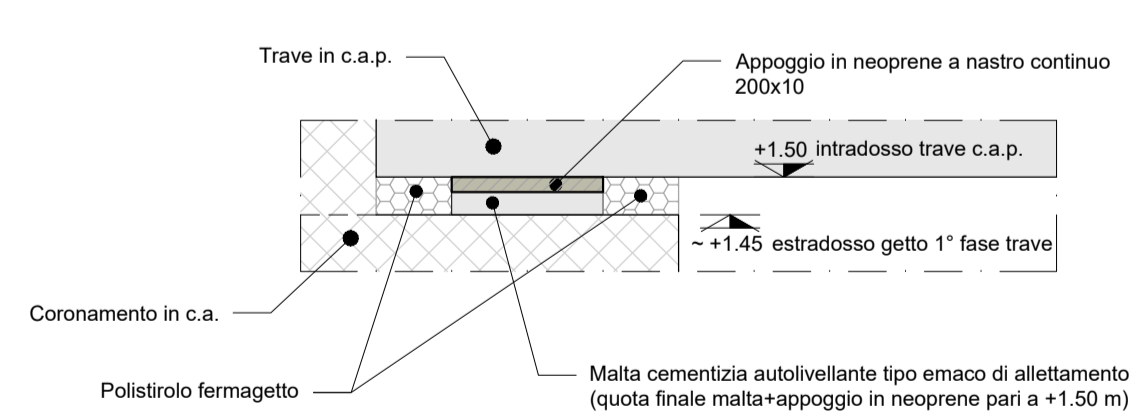
ARMATURA TRAVE DI CORONAMENTO  
SEZIONE CORRENTE SENZA PALO



Armatura di continuità  
10Ø22/m L=450/500 (alternati) (\*\*)

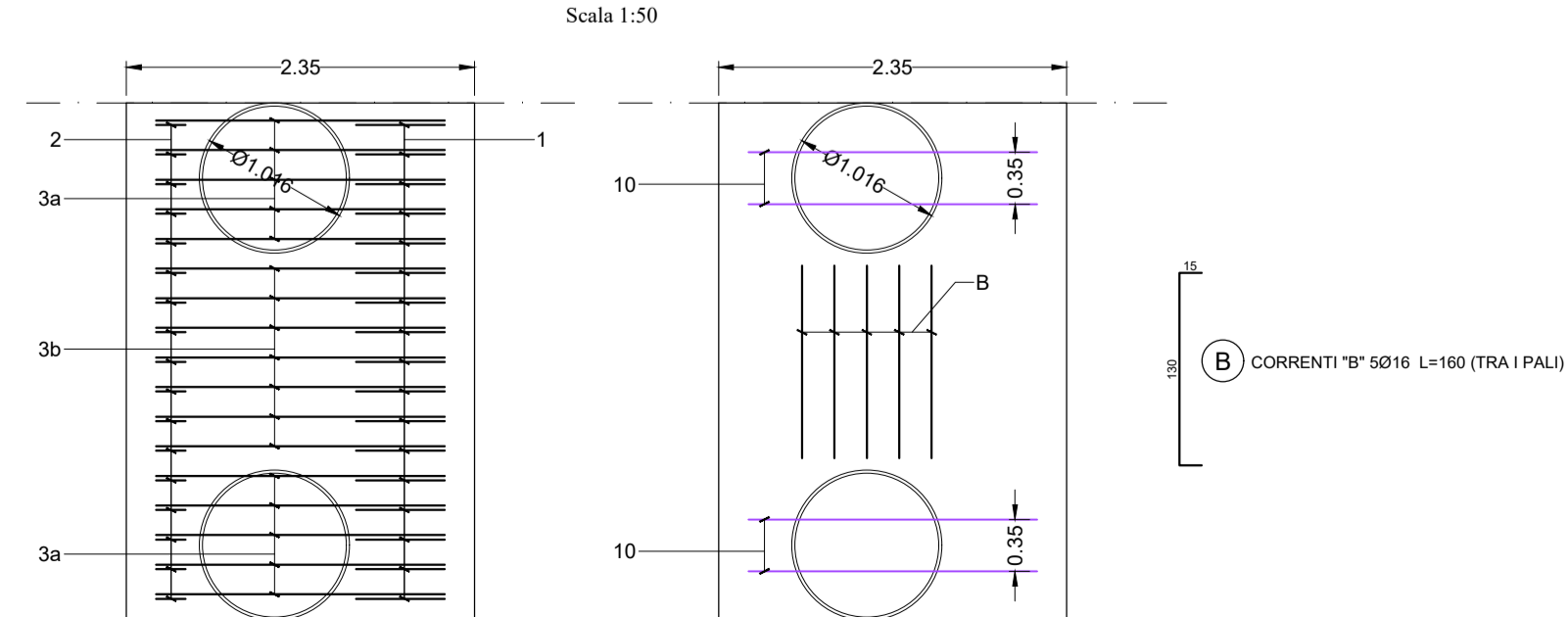


DETTAGLIO 2  
Scala 1:50

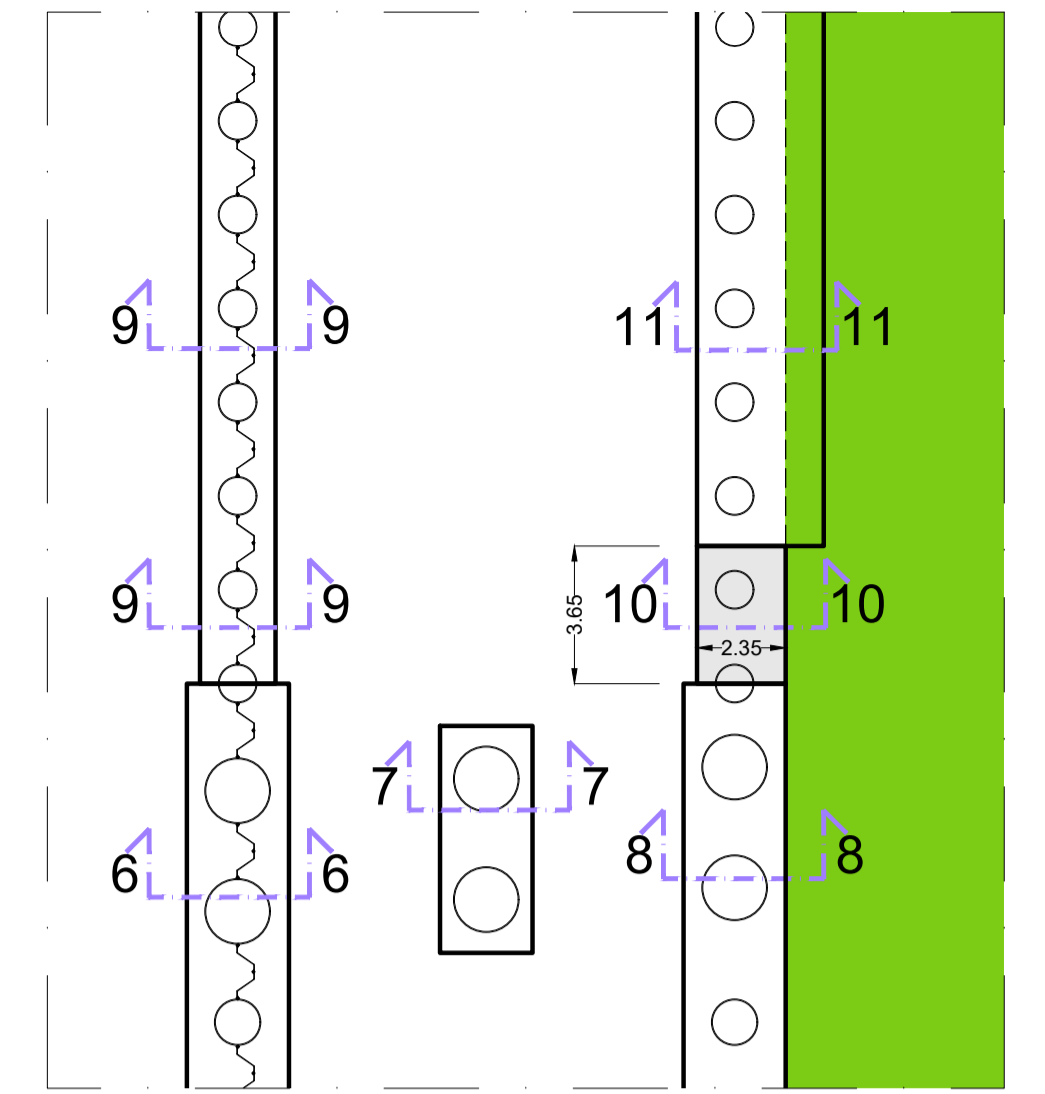


CANALE MELARA (BANCHINA SINISTRA IDRAULICA)

ARMATURA TRAVE DI CORONAMENTO  
PIANTE  
Scala 1:50

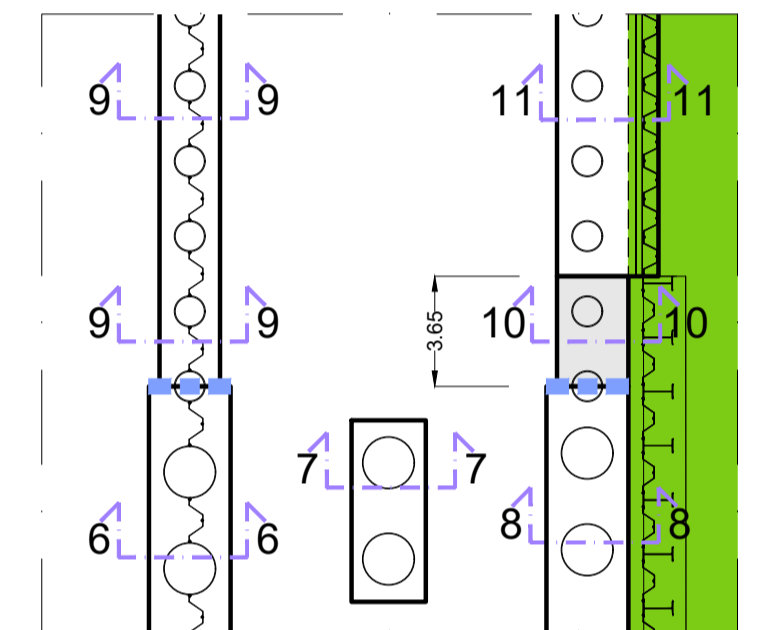


PIANTA CHIAVE



LEGENDA  
— Stato di fatto  
— Stato di progetto

PIANTA CHIAVE GIUNTI



**LSCT LA SPEZIA**  
**CONTAINER TERMINAL**



PORTO DI LA SPEZIA  
AMPLIAMENTO TERMINAL RAVANO

PROGETTO ESECUTIVO

TITOLO ELABORATO  
**PROLUNGAMENTO FOSSO MELARA  
TRAVI CORONAMENTO PALI  
CARPENTERIA E ARMATURA - SEZIONE 10-10**

CODICE ELABORATO  
**21 08 PE TG09 00**

SCALA  
**1:50**

Rev.	Data	Causale
0	05/05/2023	Emissione finale per verificatore
1		
2		
3		

IL COMMITTENTE

**LSCT S.p.a.**  
Via S. Bartolomeo, 20  
01038 - La Spezia (SP)  
C.F. 0007260115 - P.IVA 00879020114

IL PROGETTISTA

**Modimar Project S.r.l.**  
Via Asmara, 72 - 00199 Roma (RM)  
P. IVA 16016151009

**Geotechnical Engineering Services S.r.l.**  
Via Sandro Totti, 7/A - 60131 Ancona (AN)  
P. IVA 02524830420

**GeoEquipie - Studio Tecnico Associato**  
Via Sandro Pertini, 55 - 62029 Tolentino (MC)  
P. IVA 00817500432

Disegnato:	Controllato:	Approvato:
Balducci	Sanzone	Tartaglini

Note: