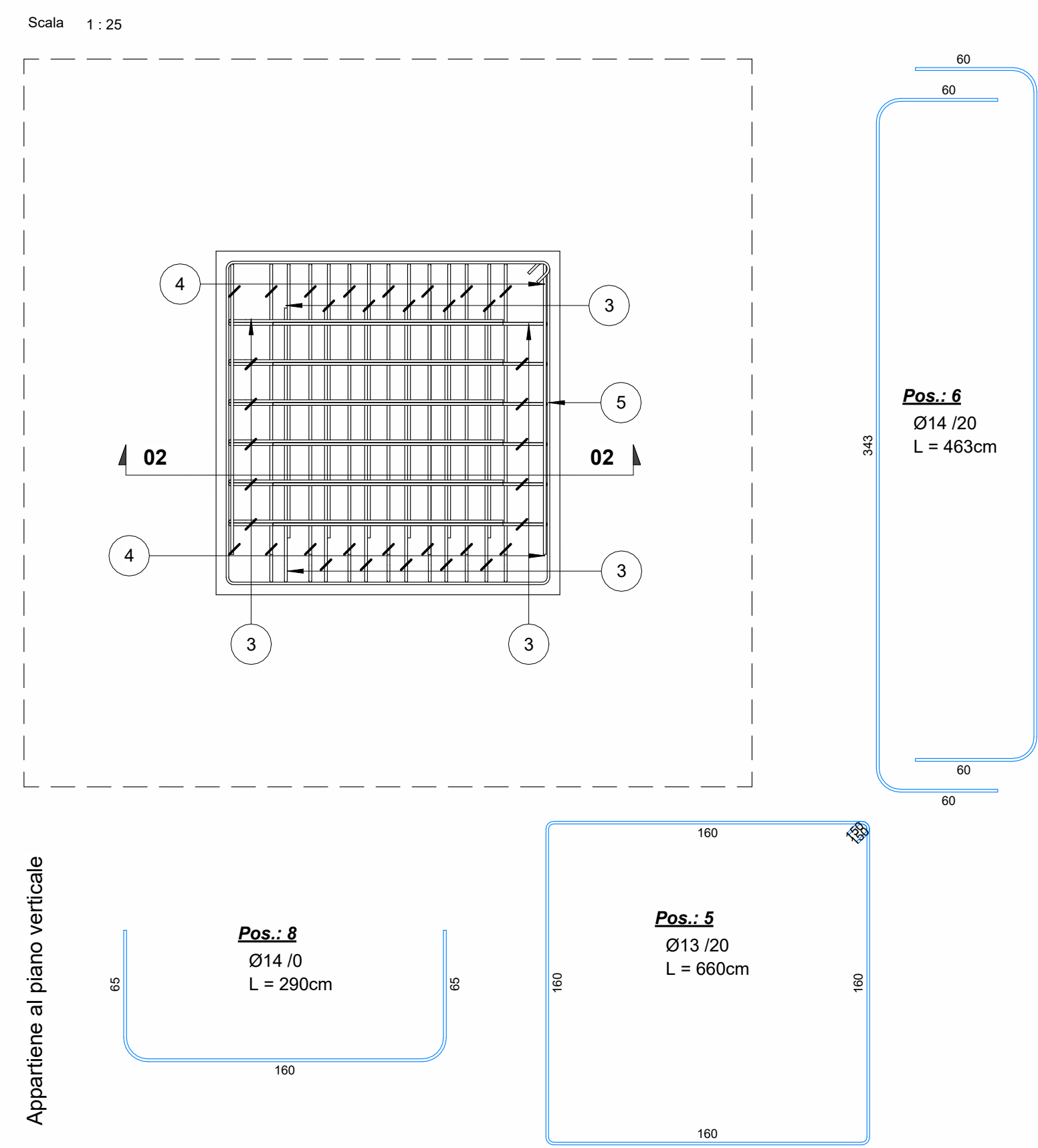
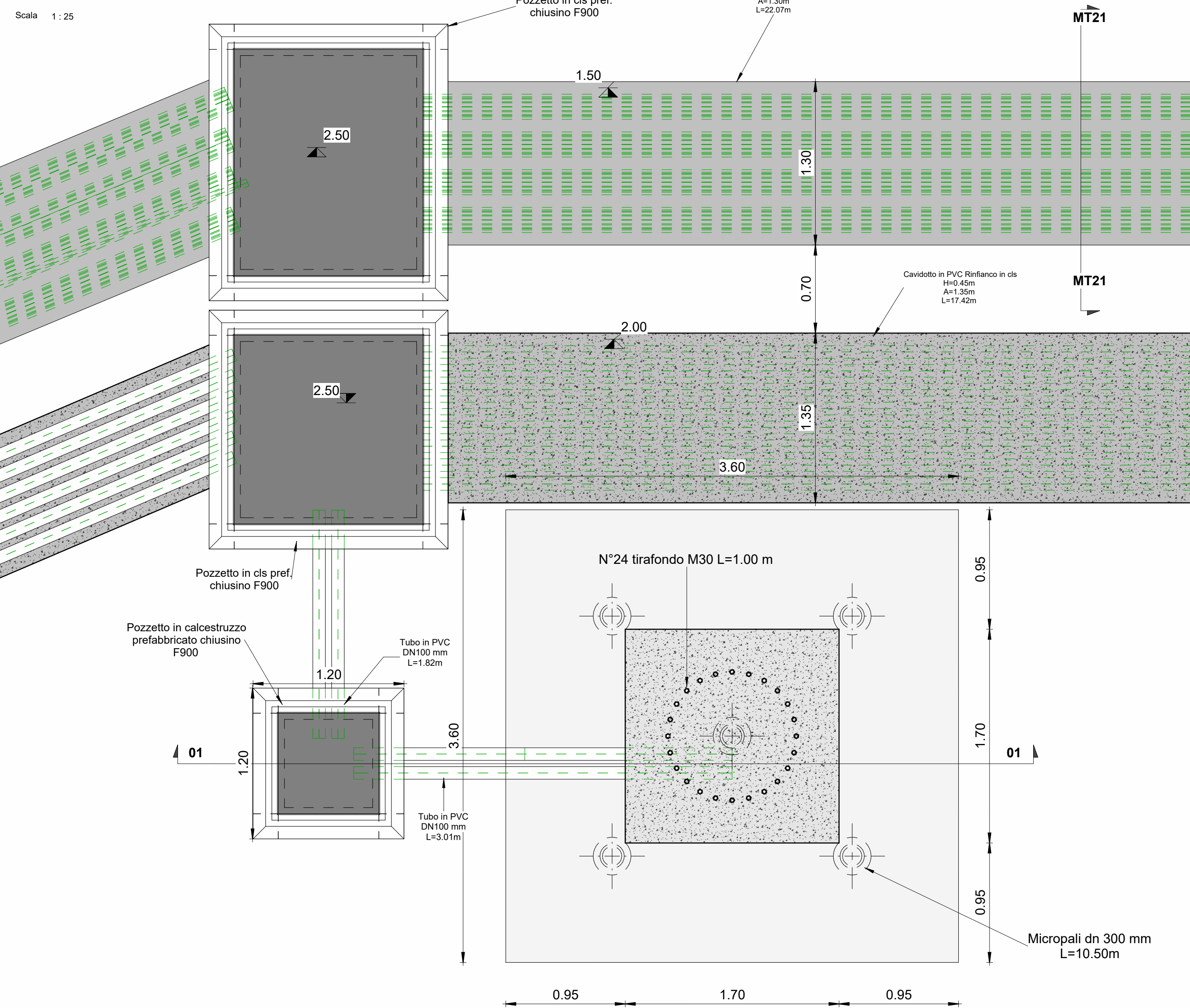


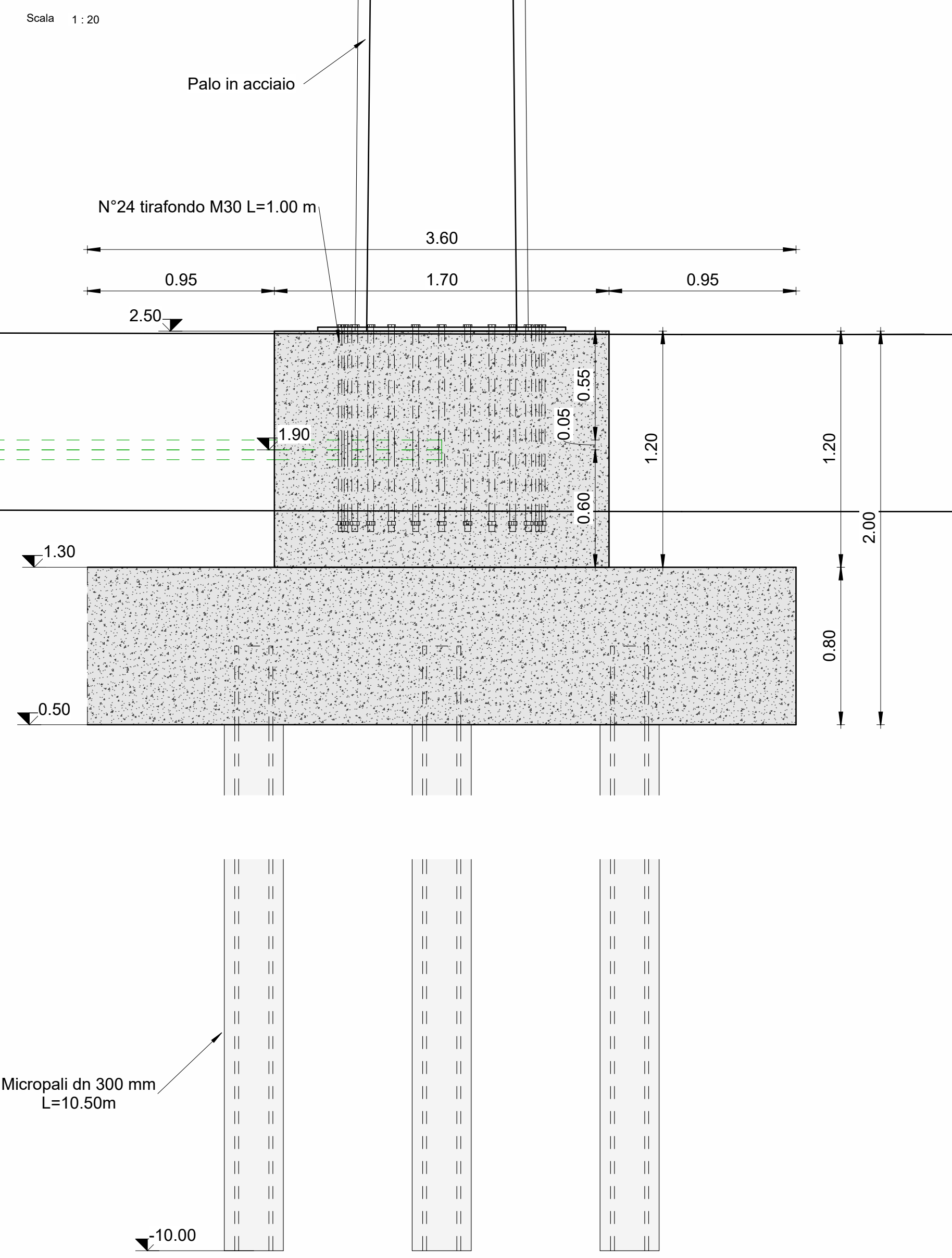
Sezione a q.ta +2.50 m - Armatura



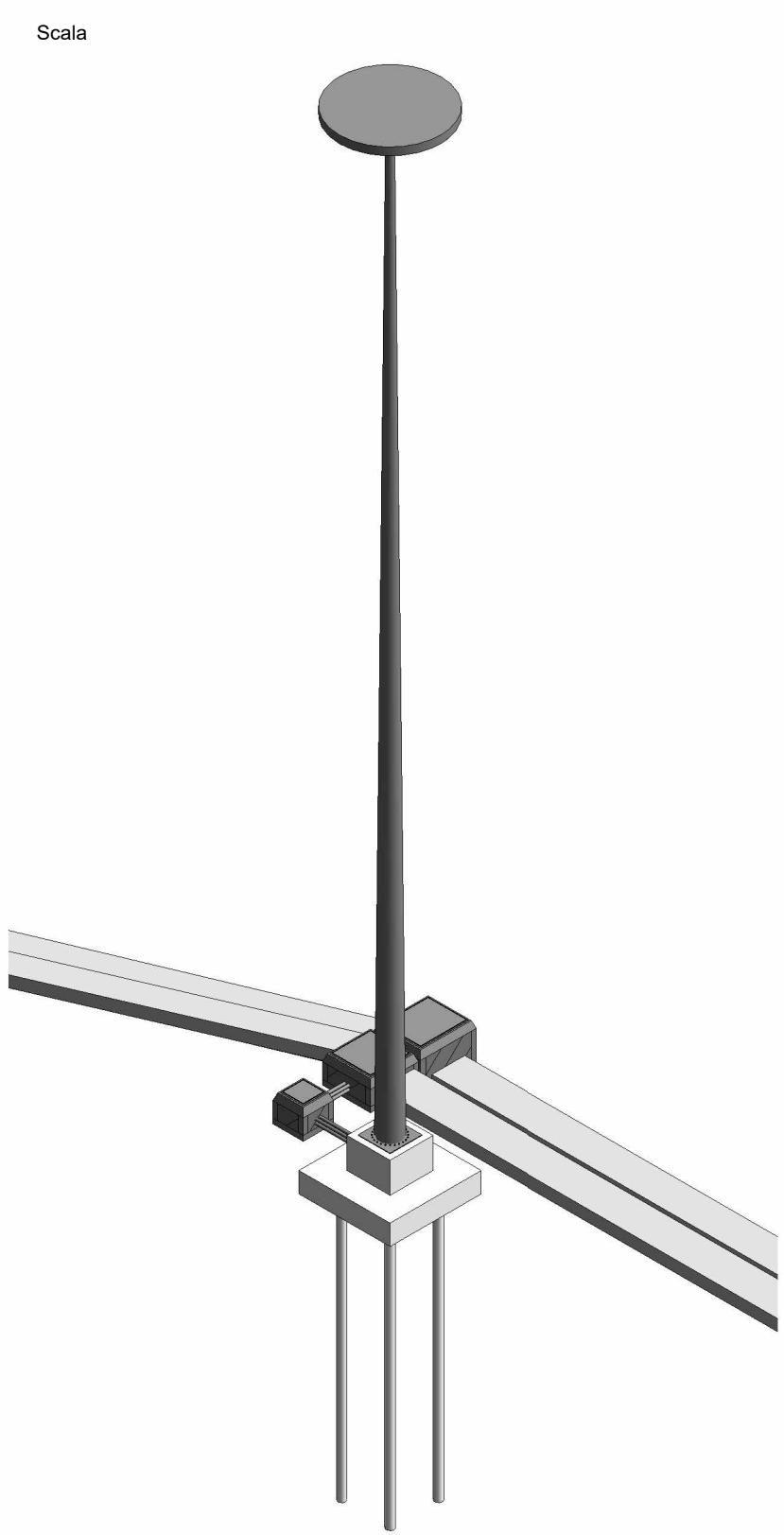
Pianta



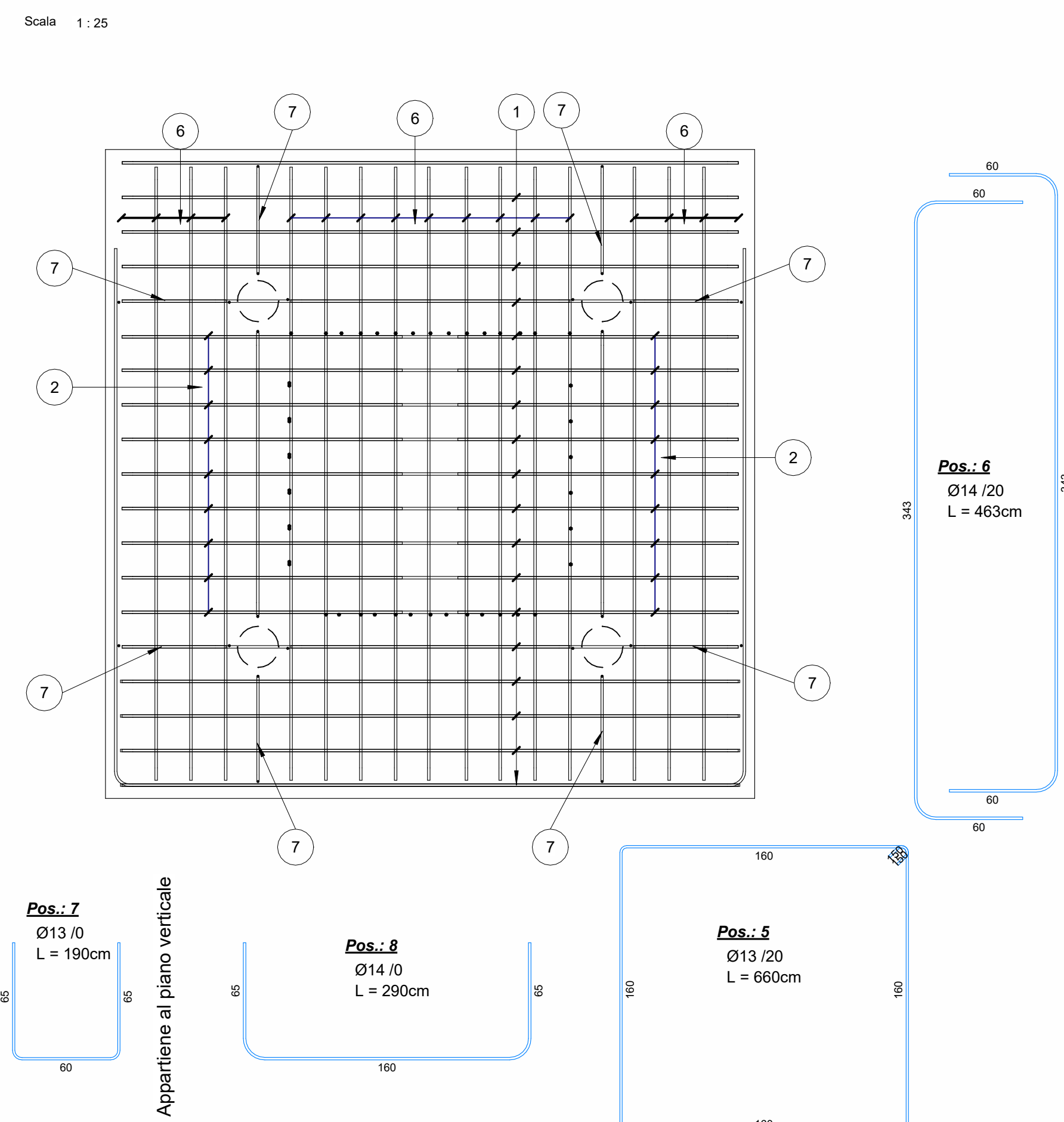
Sezione 01



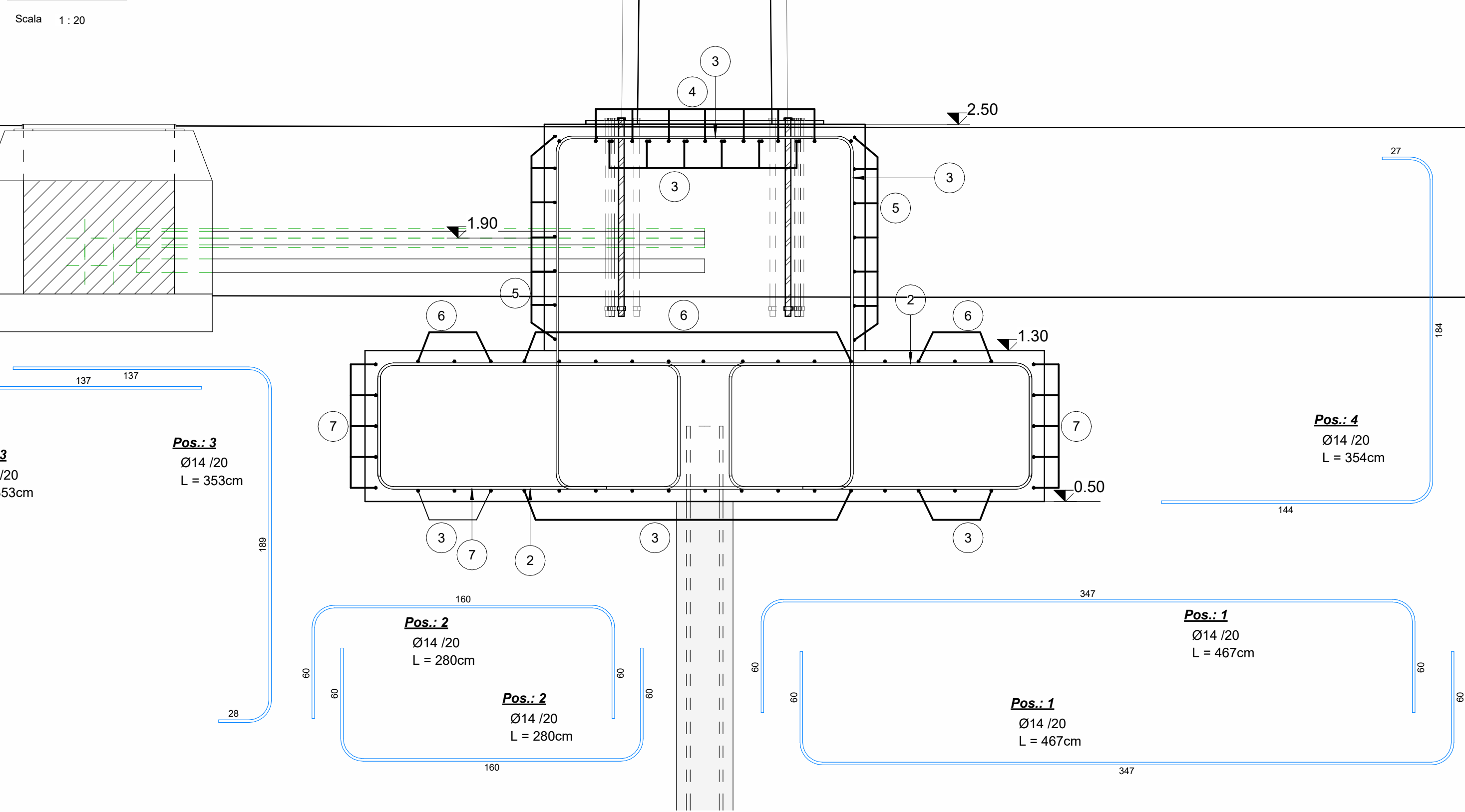
Tridimensionale



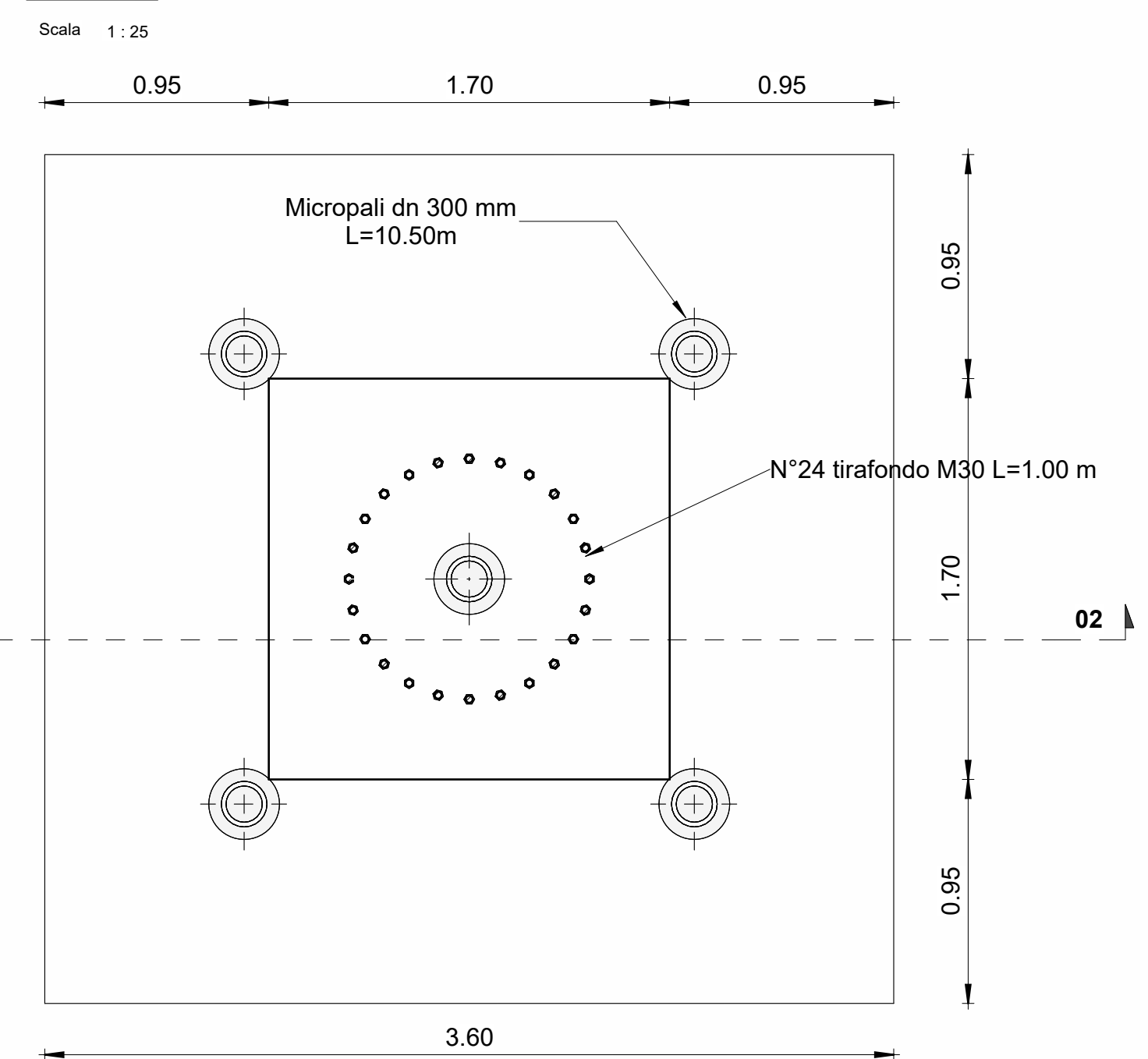
Sezione a q.ta +1.30 m - Armatura



Sezione 02



Pianta



LSC T LA SPEZIA CONTAINER TERMINAL



PROGETTO ESECUTIVO

TITOLO ELABORATO
Impianto elettrico - Torri faro - carpenteria e armatura

CODICE ELABORATO
21 08 PE TP29 0

SCALA
Come indicato

Rev.	Data	Causale
0	05-05-2023	Emissione finale per verificatore

IL COMMITTENTE
LSC T S.p.a.
Viale San Bartolomeo, 20
19126 - La Spezia (SP)
C.F. 007290115 - P.IVA 006582014

IL PROGETTISTA
MP Project S.p.A.
Via Imbona, 51
00197 - Roma (RM)
C.F. - P.IVA 0808151080
Geotechnical Engineering Services S.p.A.
Via Nanda, 7/A - 40137 Bologna (BO)
C.F. - P.IVA 022109429
ESD Project
Geotop - Studio Tecnico Associato
Via Sordani, 10/10A, 35 - 40139 Bologna (BO)
C.F. - P.IVA 081550402

DIMENSIONI FOGLIO
A1

Disegnato: **CORINALDESI** Controlato: **SANZONE** Approvato: **TARTAGLINI**

Note: