

MODIFICA CONNESSIONE DELLA CABINA PRIMARIA "LE FERRIERE" E RIFACIMENTO/POTENZIAMENTO DELL'ELETTRODOTTO RTN 150 KV "LE FERRIERE - CP APRILIA"

PROGETTO DEFINITIVO

DOCUMENTAZIONE GENERALE
CATASTO

IDENTIFICAZIONE ELEBORATO

Livello prog.	Codice rintracciabilità	Tipo docum.	N° elaborato	N° foglio	Tot. fogli	NOME FILE	DATA	SCALA
PD	FORNEA	E	05	00	00	2021_LINEA-AT_PD_05_CT	19/06/2021	1:1.000

REVISIONI

REV.	DATA	DESCRIZIONE	ESEGUITO	VERIFICATO	APPROVATO
00	19/06/2021	PRIMA EMISSIONE	G. DI LORENZO	A. COSTANTINI	G. GROSSI

PROGETTAZIONE



Piazza Albania 10, 00153, Roma, Italia
Tel: +39 06 94838941
www.ermesgroup.it
info@ermesgroup.it
ermes@pec.ermesgroup.it
C.F.: 12730811002
P. IVA: 12730811002

IL RESPONSABILE TECNICO

Ing. Alessandro Costantini

IL PROGETTISTA



GESTORE DELLA RETE ELETTRICA

FIRMA PER BENESTARE

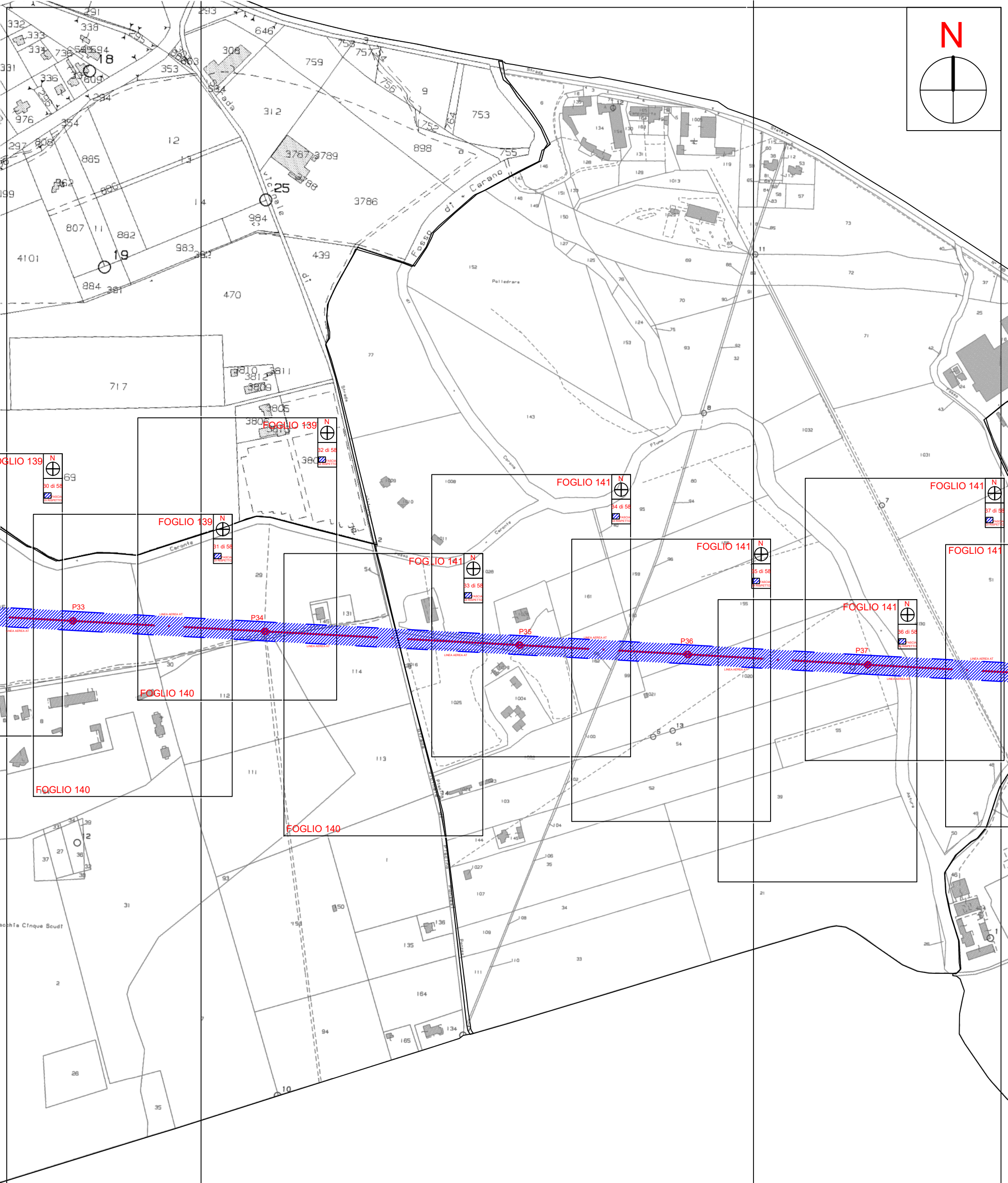
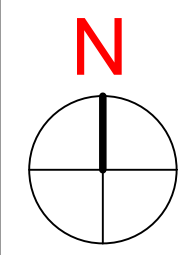
RICHIEDENTE - CAPOFILA

APOLLO SOLARE S.r.l.

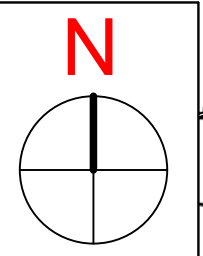
Via Baldassarre Peruzzi 16, 00153
Roma, Italia
Tel: +39 075 948 1199
apollosolare@ermesgroup.it
apollosolare@pec.it
C. F.: 15830141006
P. IVA: 15830141006

APOLLO SOLARE S.r.l.
L'Amministratore

FIRMA PER BENESTARE



QUADRO DI UNIONE 6
SCALA 1:5.000



Caronte

P33

LINEA AEREA AT



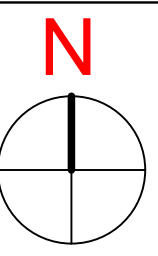
30

FOGLIO 140

112

3806

FOGLIO 139

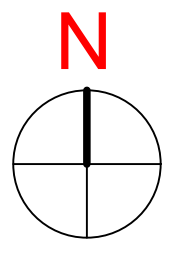


32 di 58

 FASCIA DI RISPETTO

380

FOGLIO 139



31 di 58

 FASCIA DI RISPETTO

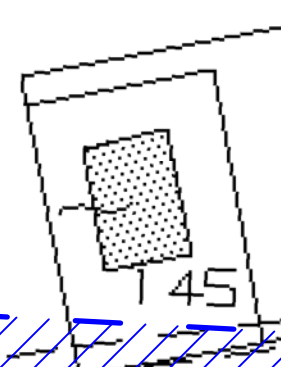
Caronte

29

LINEA AEREA AT

P34

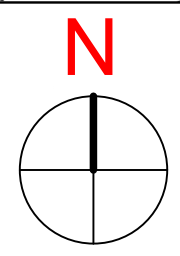
LINEA AEREA AT



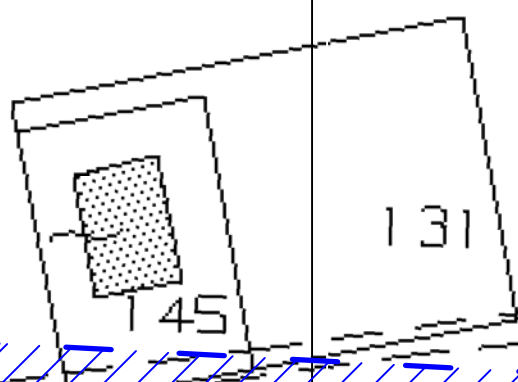
30

FOGLIO 140

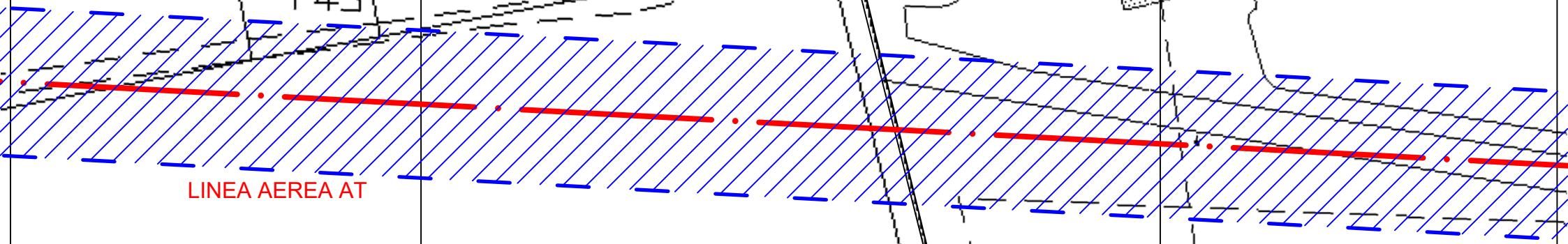
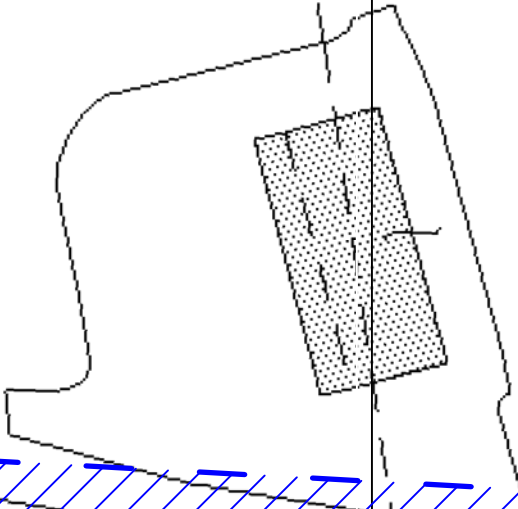
112



54



131



LINEA AEREA AT

LINEA AEREA AT

114

016

1025

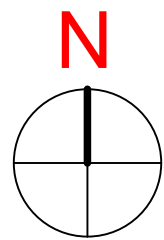
113

strada

piscina

4

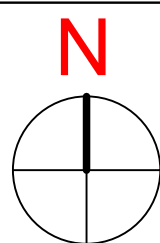
024



40

1008

Caronte



1028

P35

LINEA AEREA AT

LINEA AEREA AT

98

162

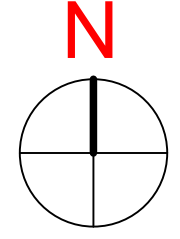
99

1025

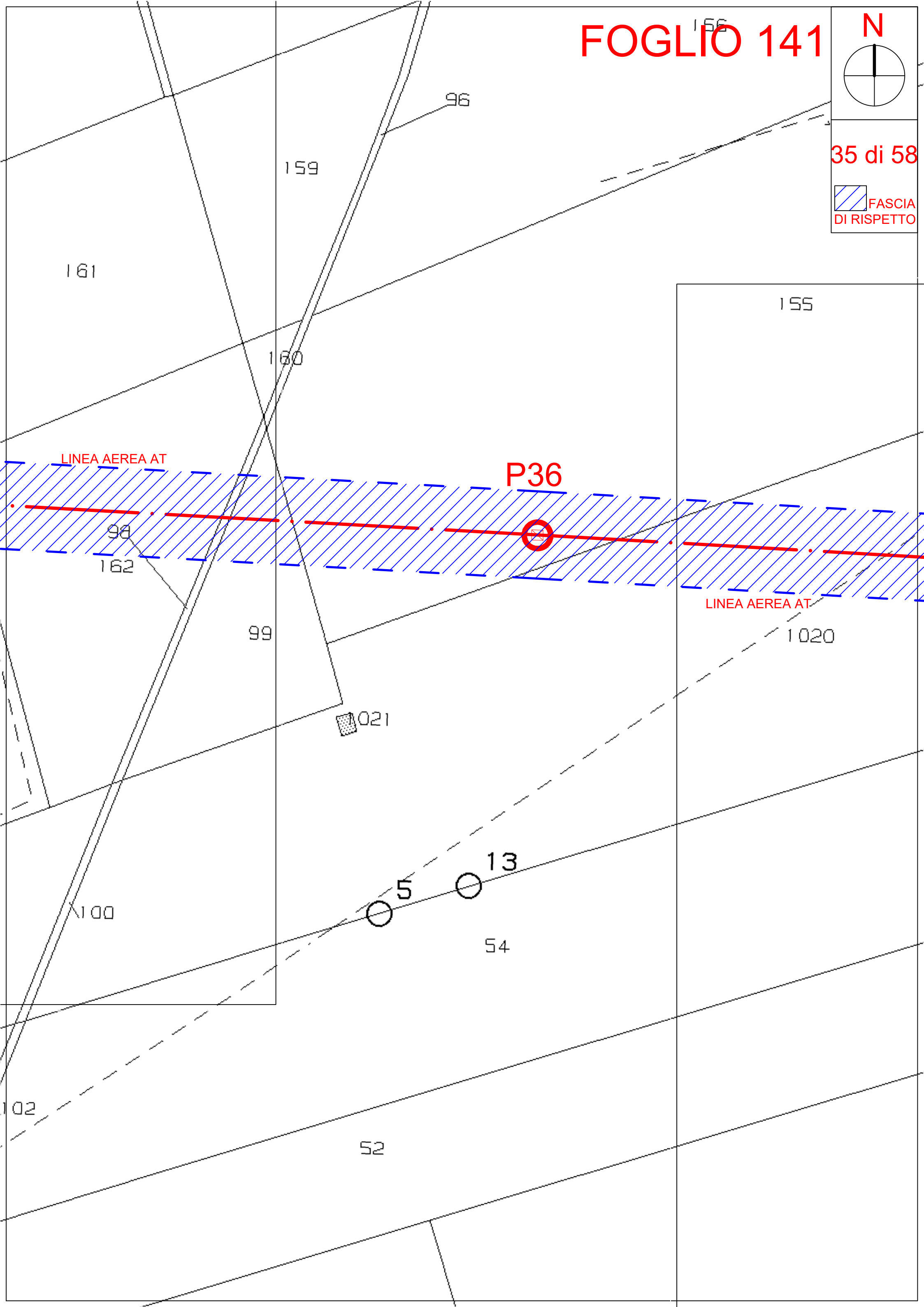
1004

100

1000

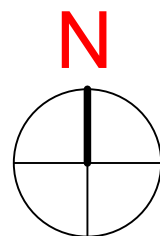


 FASCIA DI RISPETTO



155

FOGLIO 141



36 di 58

 FASCIA DI RISPETTO

P37

LINEA AEREA AT

1020

LINEA AEREA AT

55

39

Astura

