

MODIFICA CONNESSIONE DELLA CABINA PRIMARIA "LE FERRIERE" E RIFACIMENTO/POTENZIAMENTO DELL'ELETTRODOTTO RTN 150 KV "LE FERRIERE - CP APRILIA"

PROGETTO DEFINITIVO

DOCUMENTAZIONE GENERALE
CATASTO

IDENTIFICAZIONE ELEBORATO

| Livello prog. | Codice rintracciabilità | Tipo docum. | N° elaborato | N° foglio | Tot. fogli | NOME FILE | DATA | SCALA |
|---------------|-------------------------|-------------|--------------|-----------|------------|------------------------|------------|---------|
| PD | FORNEA | E | 05 | 00 | 00 | 2021_LINEA-AT_PD_05_CT | 19/06/2021 | 1:1.000 |

REVISIONI

| REV. | DATA | DESCRIZIONE | ESEGUITO | VERIFICATO | APPROVATO |
|------|------------|-----------------|---------------|---------------|-----------|
| 00 | 19/06/2021 | PRIMA EMISSIONE | G. DI LORENZO | A. COSTANTINI | G. GROSSI |
| | | | | | |
| | | | | | |
| | | | | | |

PROGETTAZIONE



Piazza Albania 10, 00153, Roma, Italia
Tel: +39 06 94838941
www.ermesgroup.it
info@ermesgroup.it
ermes@pec.ermesgroup.it
C.F.: 12730811002
P. IVA: 12730811002

IL RESPONSABILE TECNICO

Ing. Alessandro Costantini

IL PROGETTISTA



GESTORE DELLA RETE ELETTRICA

FIRMA PER BENESTARE

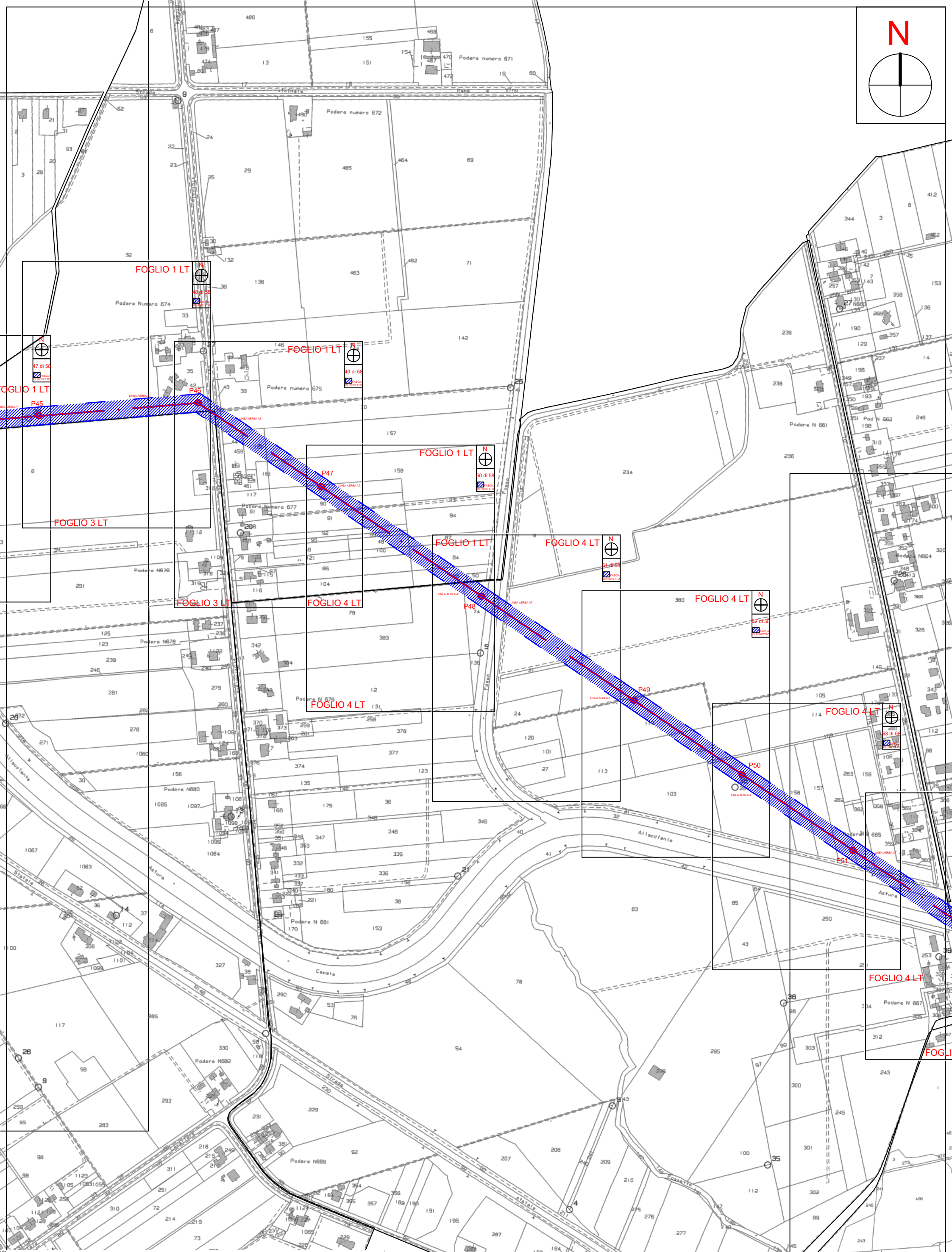
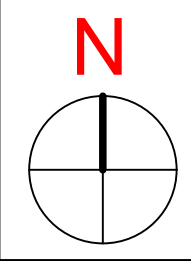
RICHIEDENTE - CAPOFILA

APOLLO SOLARE S.r.l.

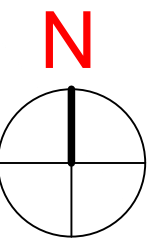
Via Baldassarre Peruzzi 16, 00153
Roma, Italia
Tel: +39 075 948 1199
apollosolare@ermesgroup.it
apollosolare@pec.it
C. F.: 15830141006
P. IVA: 15830141006

APOLLO SOLARE S.r.l.
L'Amministratore

FIRMA PER BENESTARE

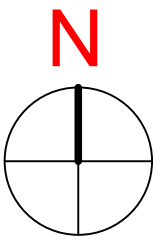


QUADRO DI UNIONE 9
SCALA 1:5.000



Padere Numero 674

33



35

42

P46

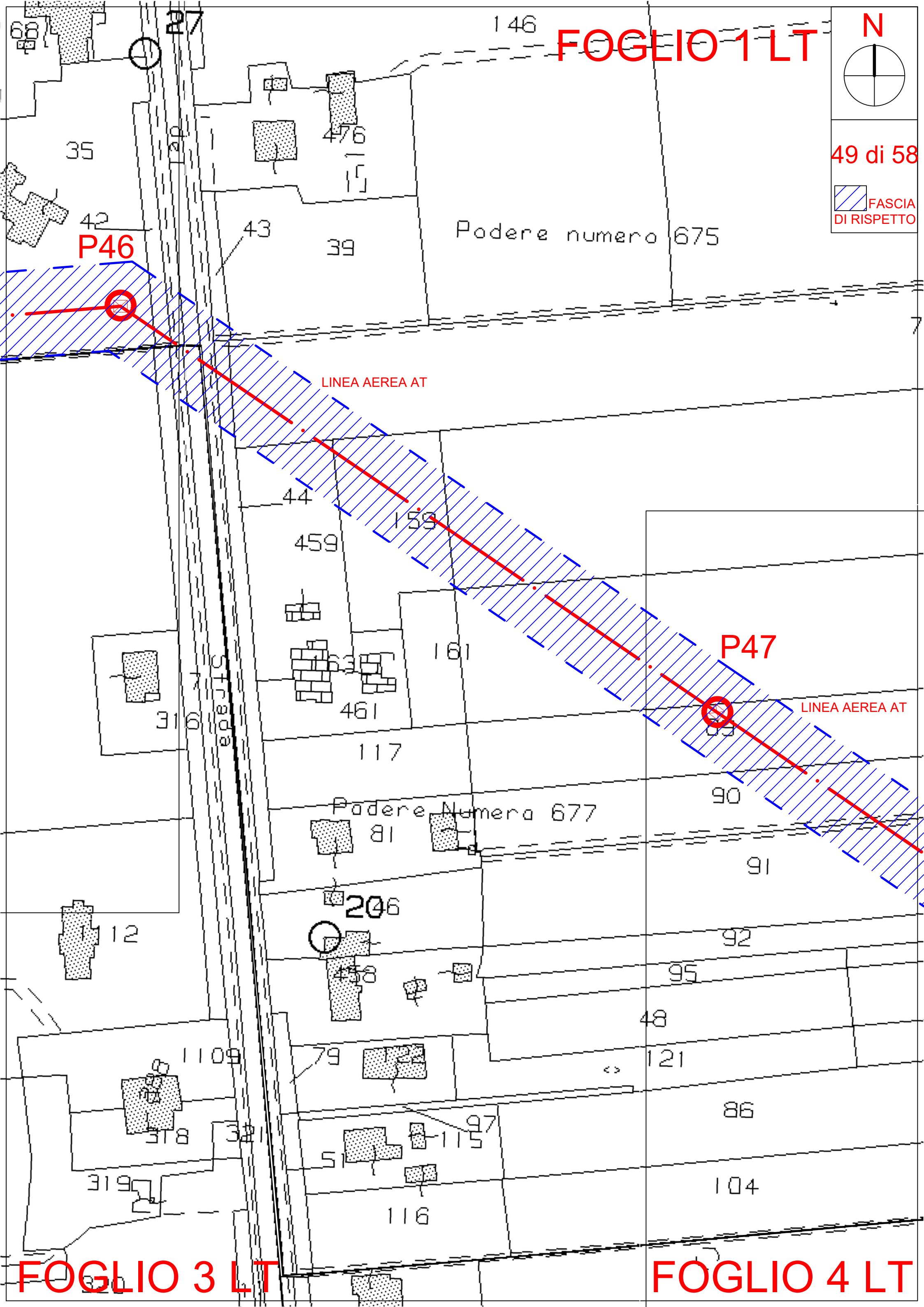
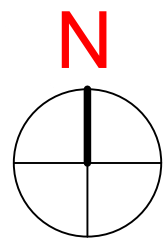
LINEA AEREA AT

P45

23

6

31



P46

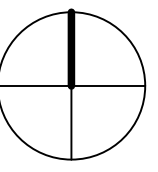
LINEA AEREA AT

P47

LINEA AEREA AT

FOGLIO 1 LT

N



50 di 58



P47

LINEA AEREA AT

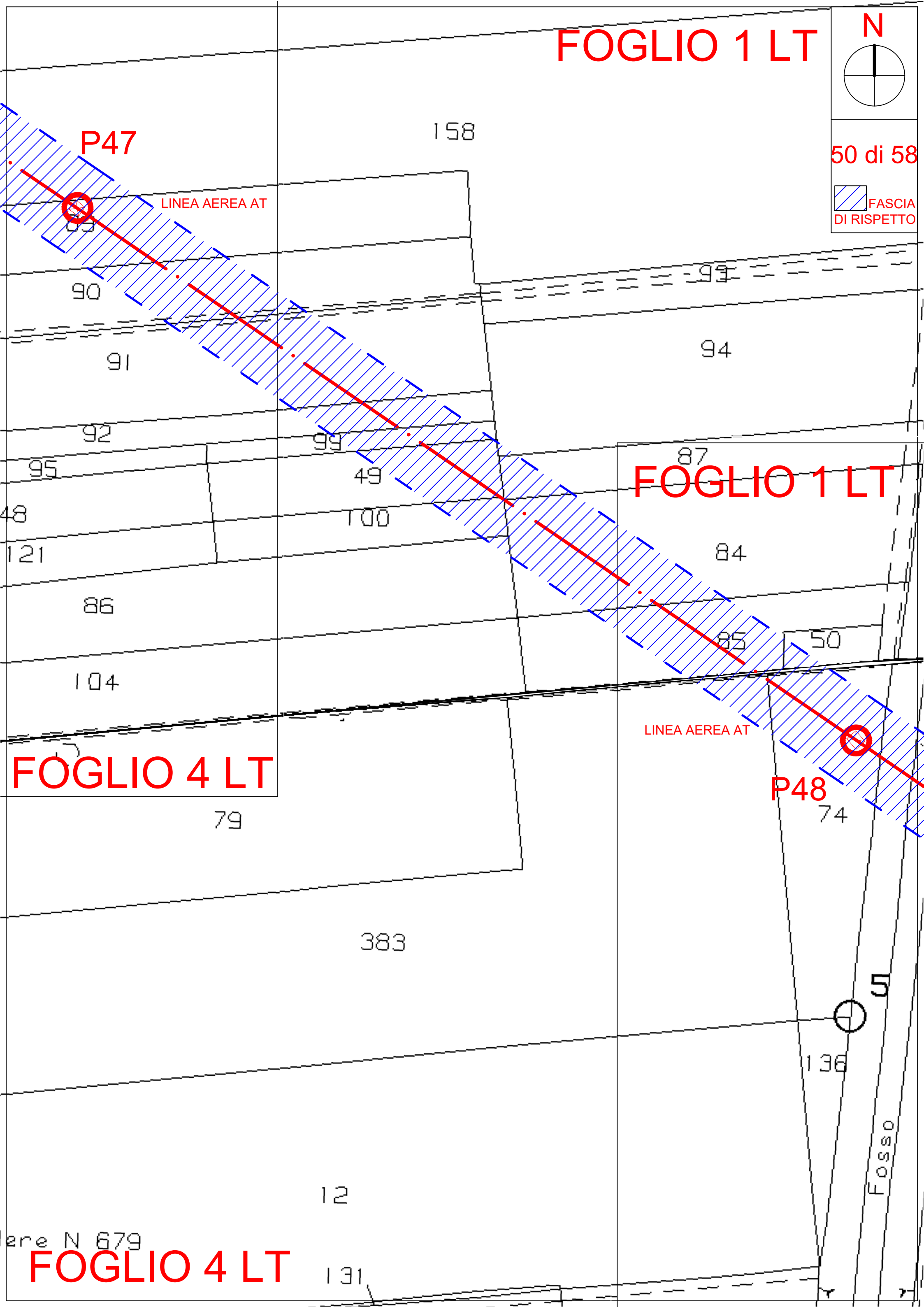
FOGLIO 1 LT

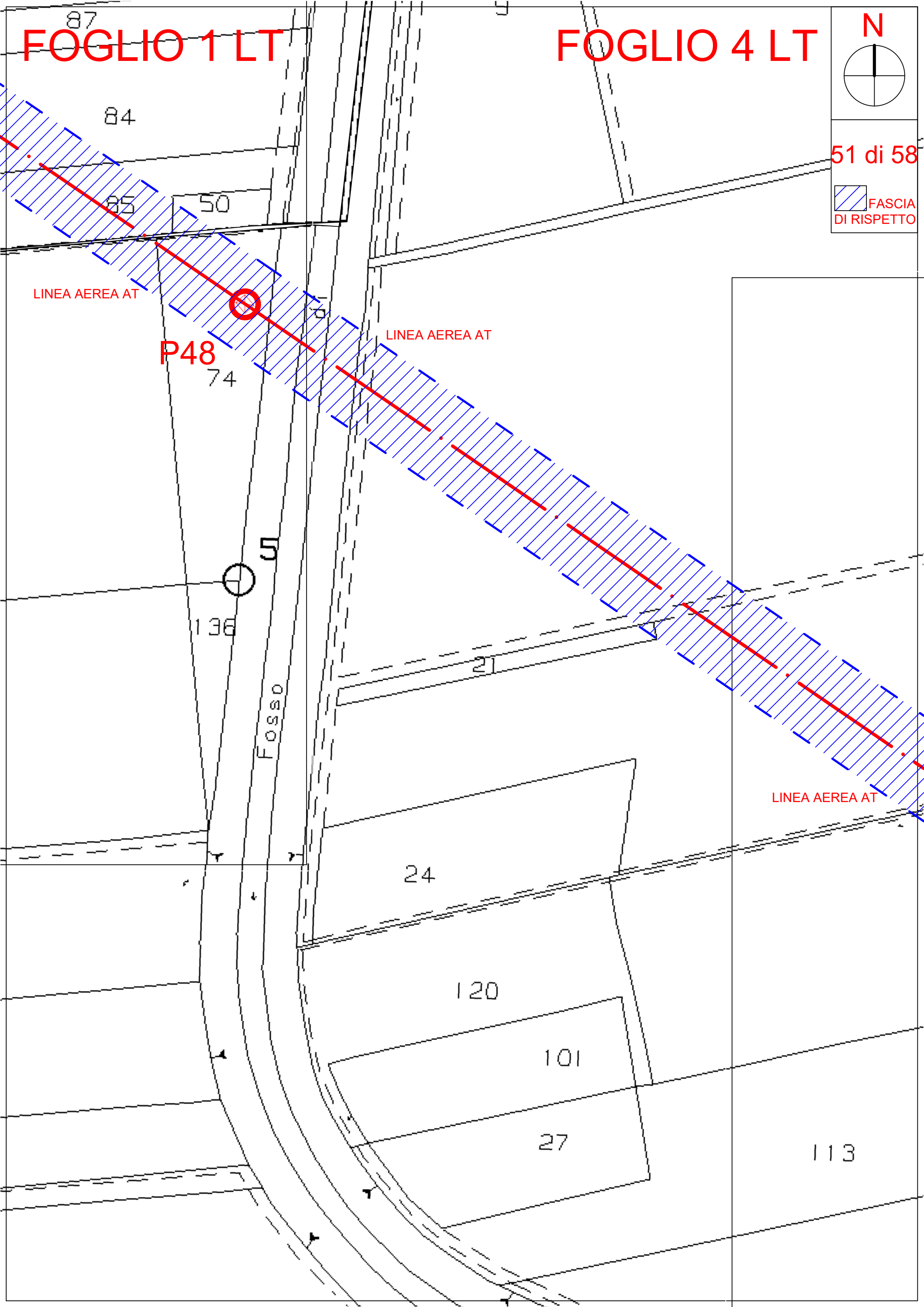
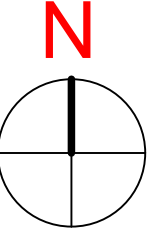
P48

LINEA AEREA AT

FOGLIO 4 LT

FOGLIO 4 LT





84

85

50

LINEA AEREA AT

P48

74

LINEA AEREA AT

136

Fosso

24

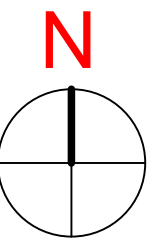
120

101

27

113

LINEA AEREA AT



LINEA AEREA AT

P49

119

104

P50

38

28

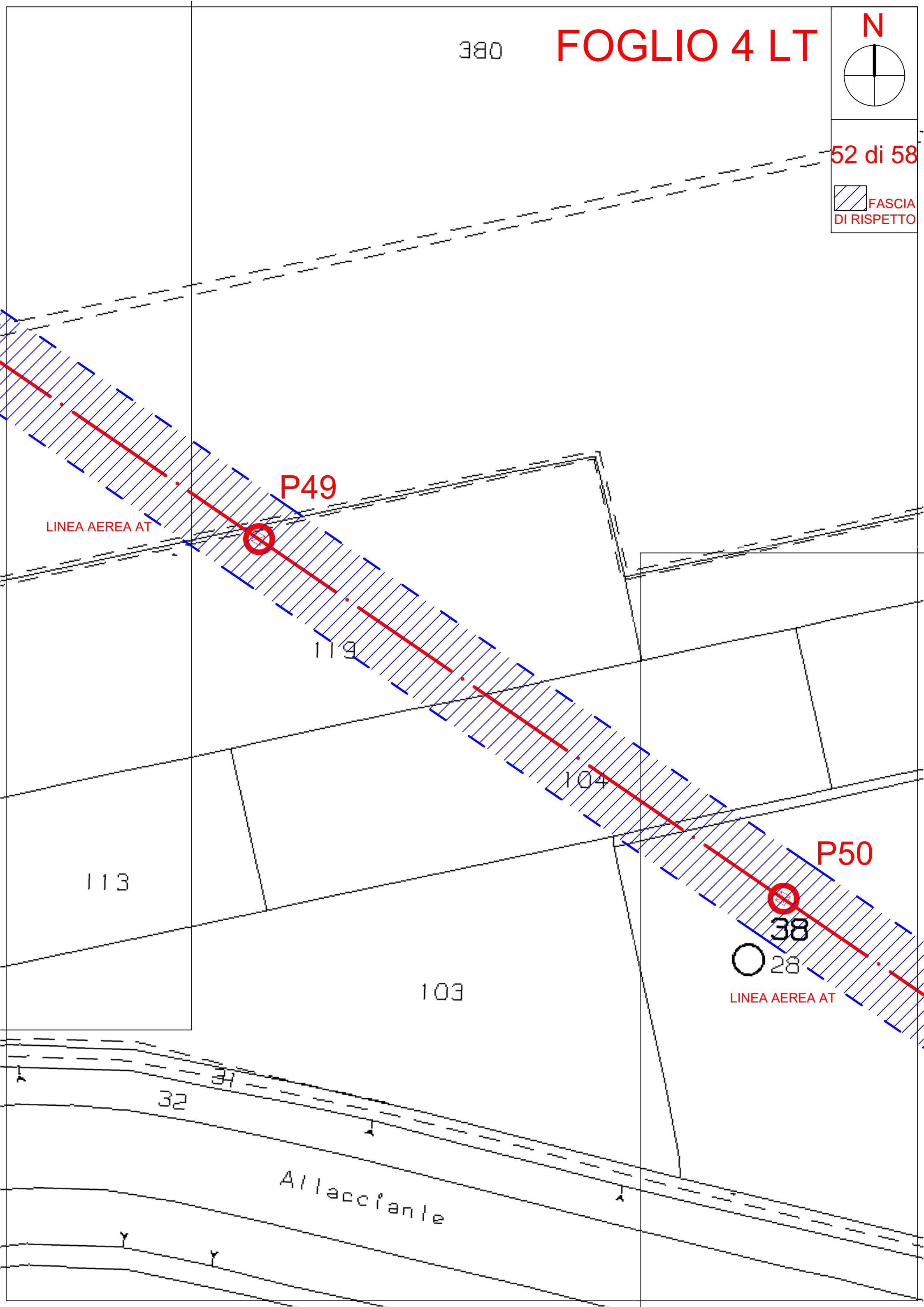
LINEA AEREA AT

113

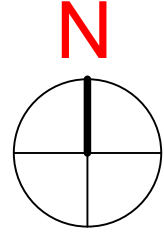
103

32

Allaccianle



FOGLIO 4 LT



53 di 58

FASCIA DI RISPETTO

P50
38
28
LINEA AEREA AT

P51

LINEA AEREA AT

Astura

