

AUTOSTRADA A2 DEL MEDITERRANEO

Interventi per la rinaturalizzazione o il riutilizzo dei tratti campani dismessi con particolare riferimento ai lotti fra il km 8+000 e il km 13+000 e fra il km 36+000 e il km 53+000

PROGETTO DEFINITIVO

COD. **UC149**

PROGETTAZIONE: ATI SINTAGMA - GDG - ICARIA

IL RESPONSABILE DELL'INTEGRAZIONE DELLE PRESTAZIONI SPECIALISTICHE:

Dott. Ing. Nando Granieri
Ordine degli Ingegneri della Prov. di Perugia n° A351

IL PROGETTISTA:

Elena Bartolucci
Ordine degli Ingegneri della Prov. di Perugia n°A3217

IL GEOLOGO:

Dott. Geol. Giorgio Cerquiglini
Ordine dei Geologi della Regione Umbria n°108

Il R.U.P.

Dott. Ing.
Antonio Citarella

IL COORDINATORE PER LA SICUREZZA IN FASE DI PROGETTAZIONE:

Dott. Ing. Filippo Pambianco
Ordine degli Ingegneri della Prov. di Perugia n° A1373

PROTOCOLLO

DATA

IL GRUPPO DI PROGETTAZIONE:

MANDATARIA:

MANDANTI:

Sintagma

GEOTECHNICAL DESIGN GROUP

ICARIA
società di Ingegneria

Dott. Ing. N.Granieri
Dott. Ing. V.Truffini
Dott. Arch. A.Bracchini
Dott. Ing. F.Durastanti
Dott. Ing. E.Bartolucci
Dott. Geol. G.Cerquiglini
Geom. S.Scopetta
Dott. Ing. L.Dinelli
Dott. Ing. L.Nani
Dott. Ing. F.Pambianco
Dott. Agr. F.Berti Nulli
Dott. Ing. F.Negozio
Geom. C.Calcina
Dott. Ing. F.Rotini
Dott. Ing. E.Santucci

Dott. Ing. D.Carliaccini
Dott. Ing. S.Sacconi
Dott. Ing. M.Boldorini
Dott. Geol. L.Casaburi
Dott. Ing. C.Consorti

Dott. Ing. V.Rotisciani
Dott. Ing. F.Macchioni
Geom. C.Vischini
Dott. Ing. V.Piunno
Dott. Ing. G.Pulli
Geom. C.Sugaroni



06.AMBIENTE

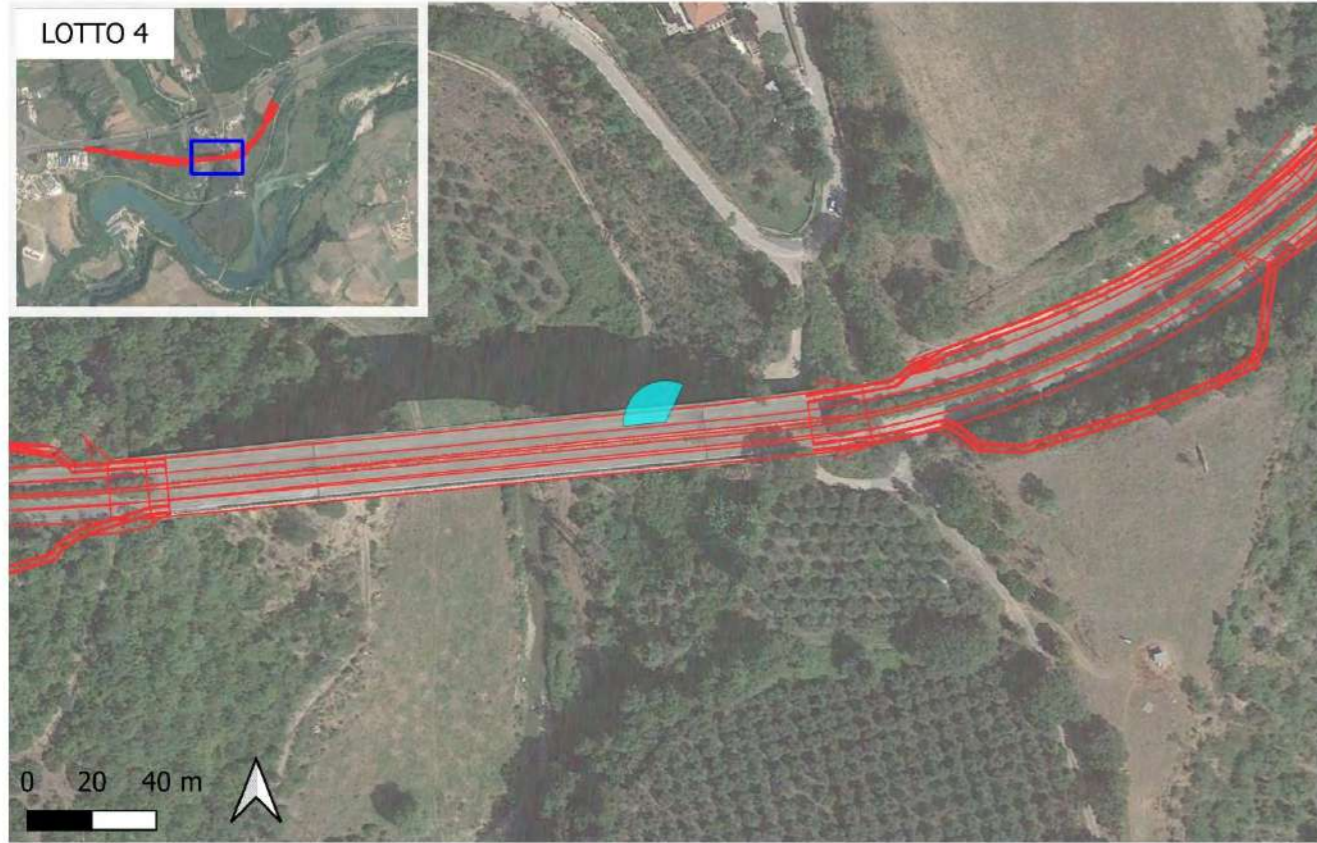
06.05 RELAZIONE PAESAGGISTICA E STUDIO DI INSERIMENTO PAESAGGISTICO

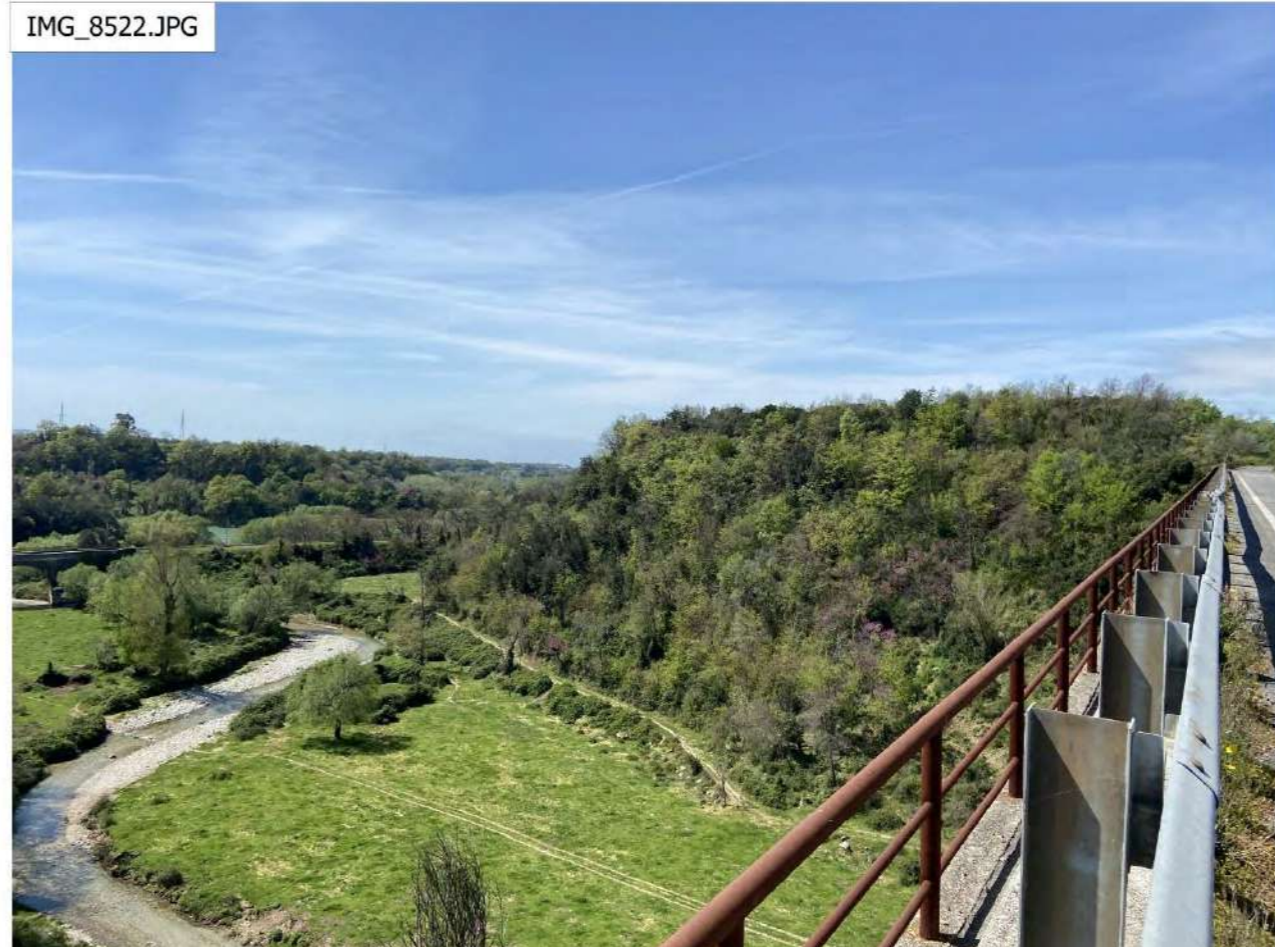
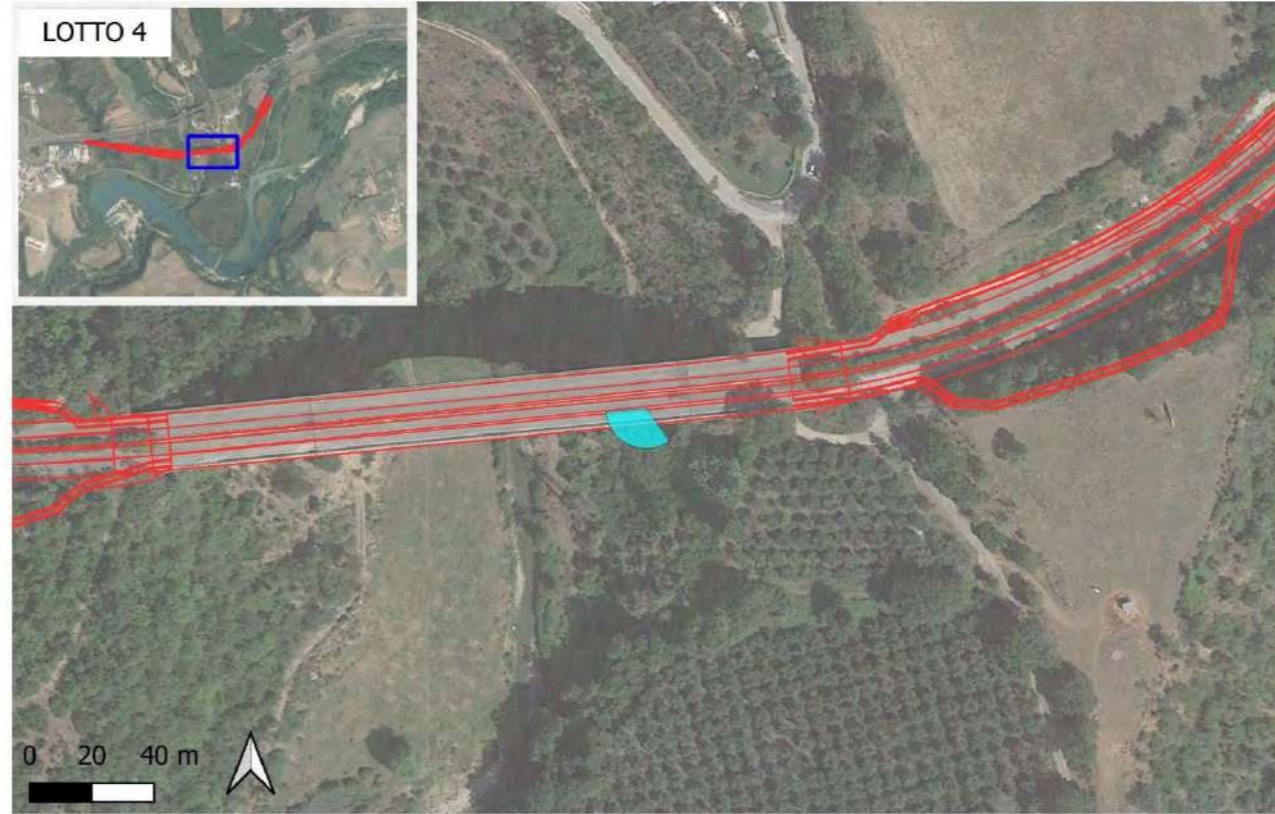
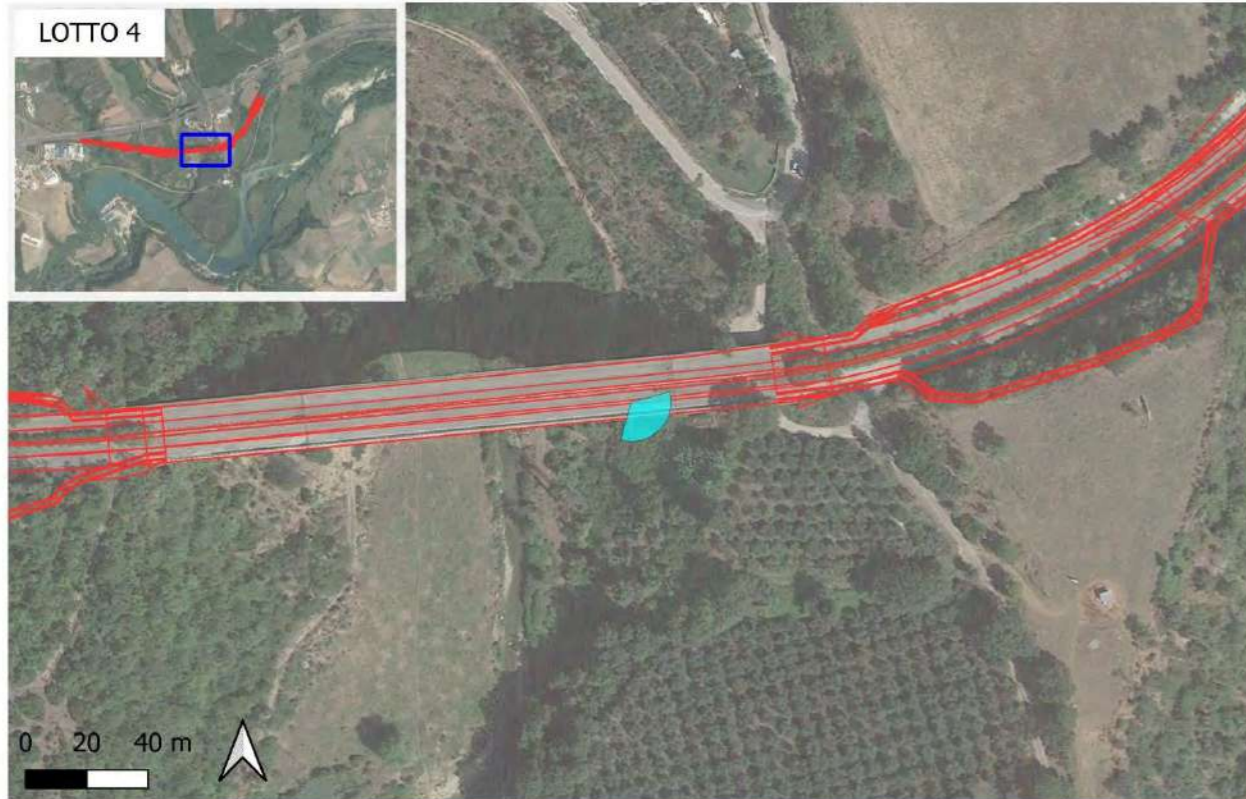
Documentazione fotografica - Lotto 4

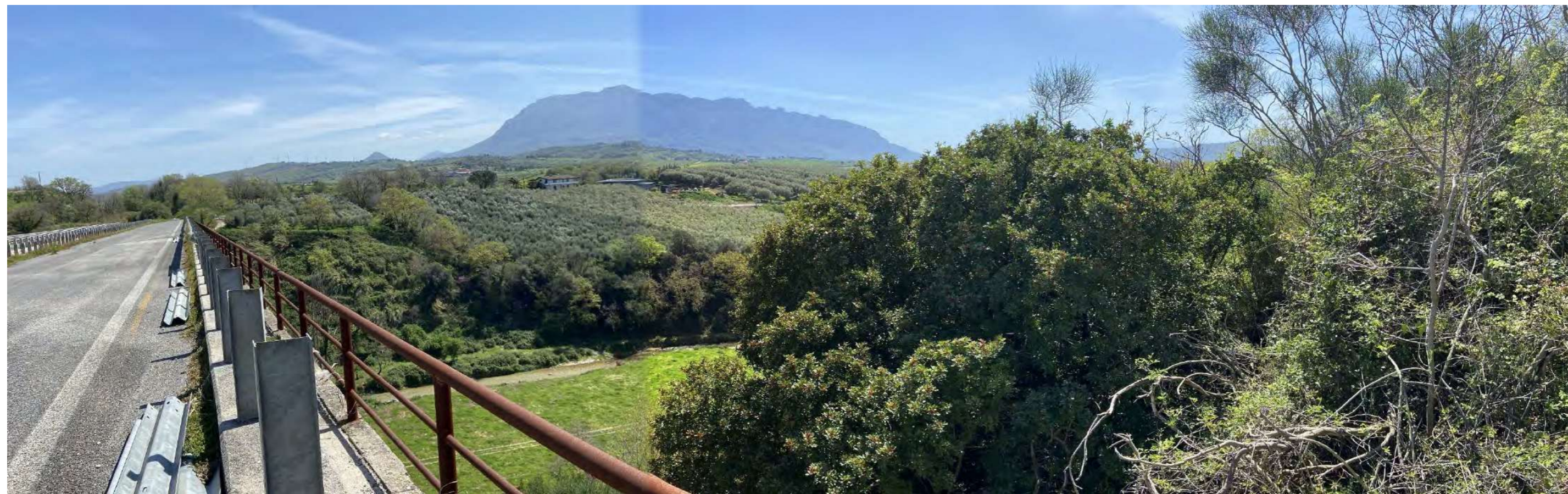
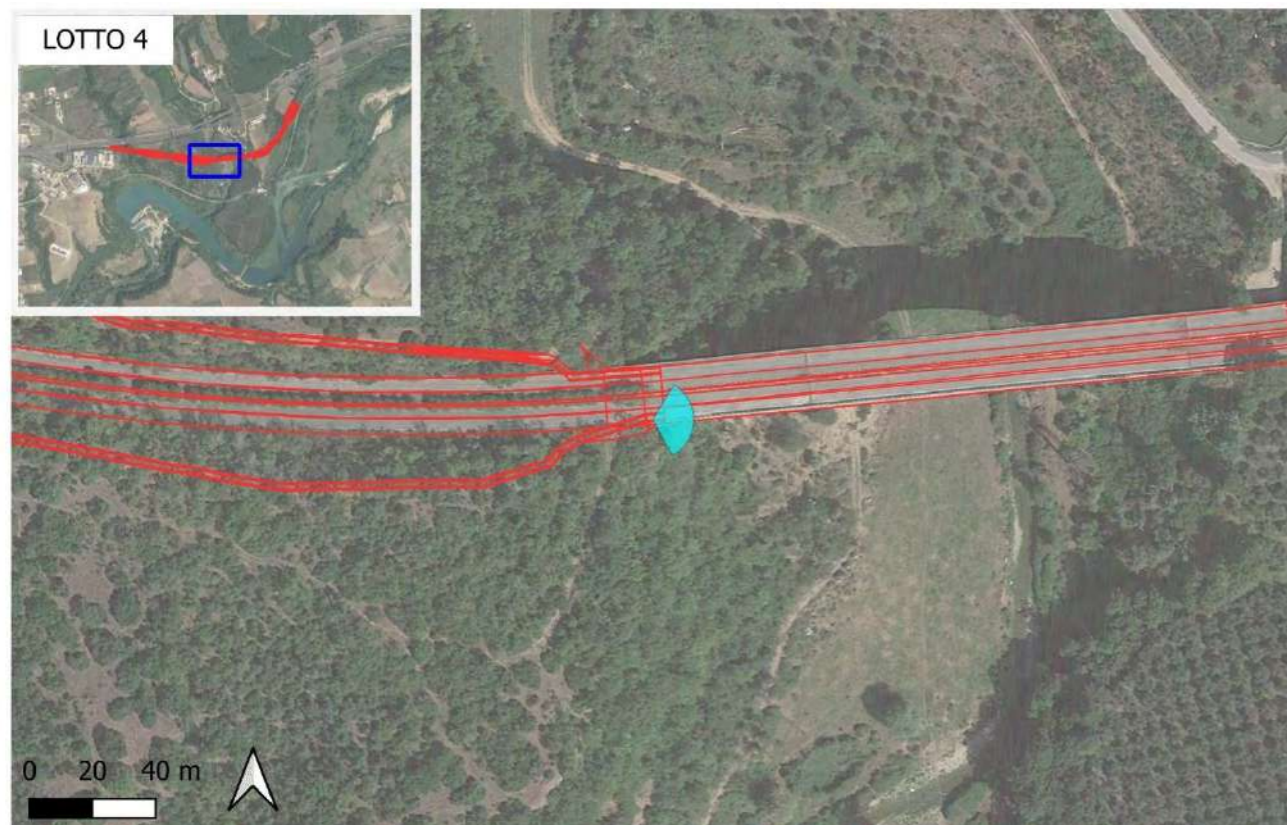
CODICE PROGETTO			NOME FILE	REVISIONE	SCALA:
PROGETTO	LIV. PROG.	N. PROG.	T04-IA05-AMB-PV01-A		
DPUC0149	D	21	CODICE ELAB. T04IA05AMB PV01	A	varie
A	Emissione		OTT 23	S.Bracchini	A. Bracchini N.Granieri
REV.	DESCRIZIONE		DATA	REDATTO	VERIFICATO APPROVATO

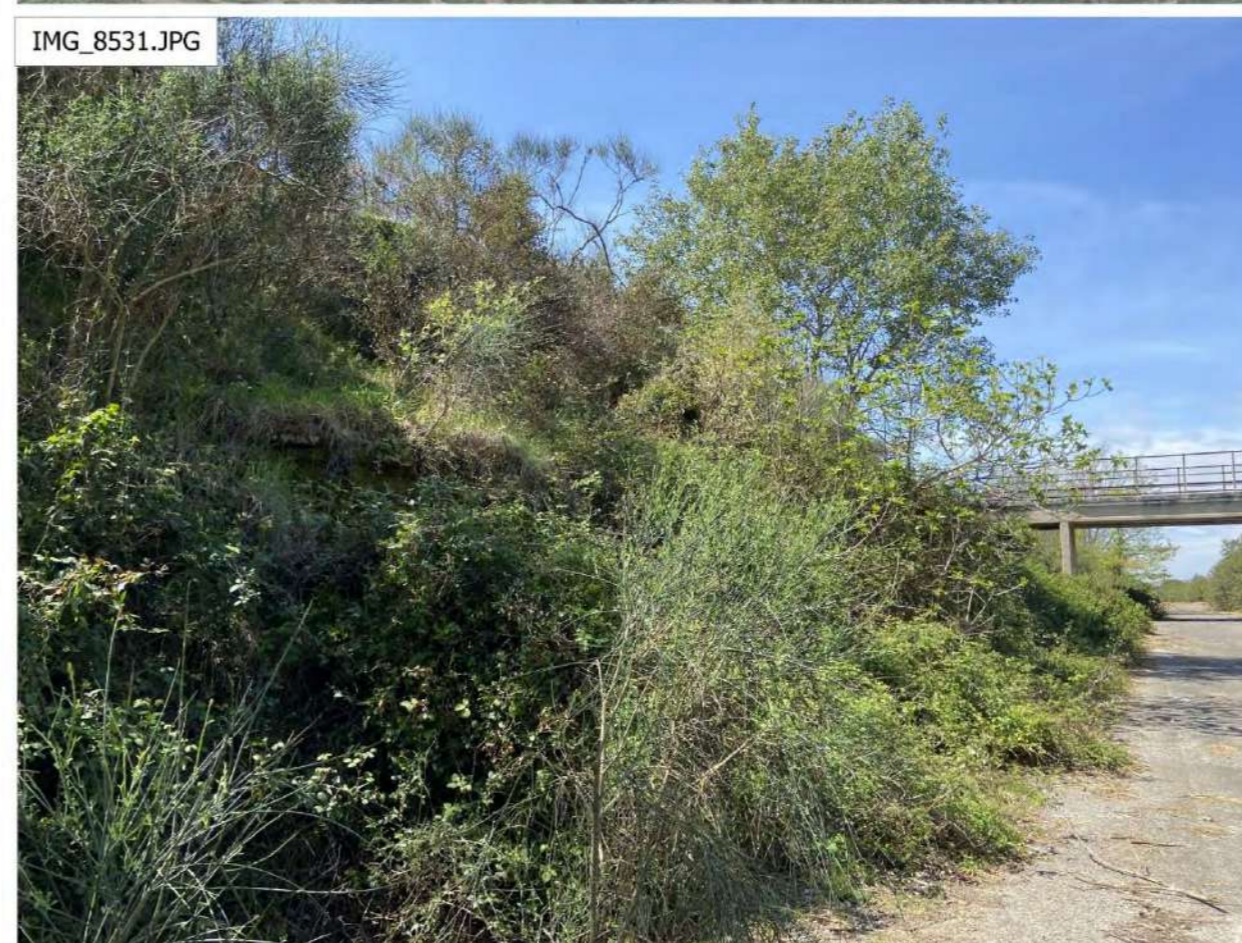
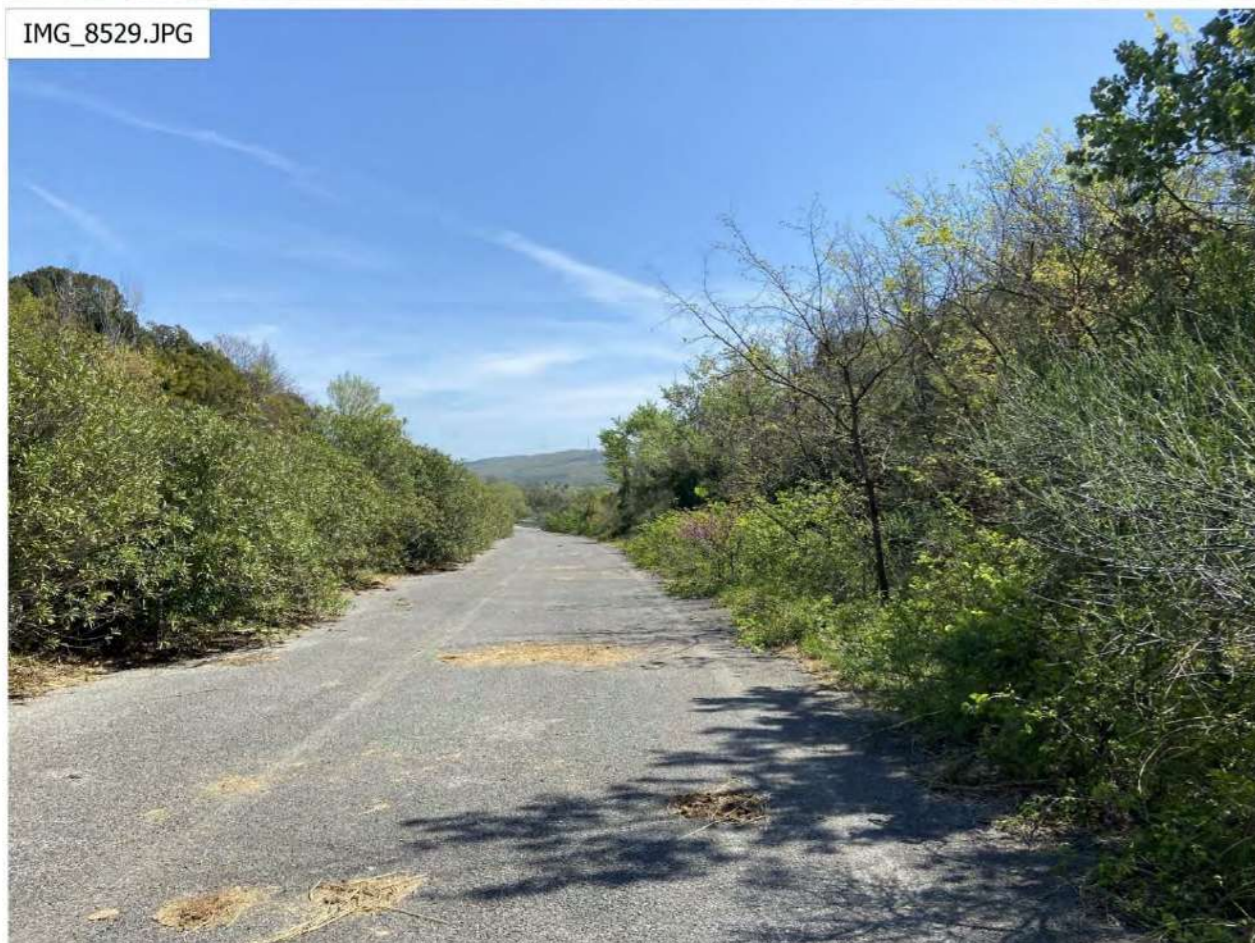
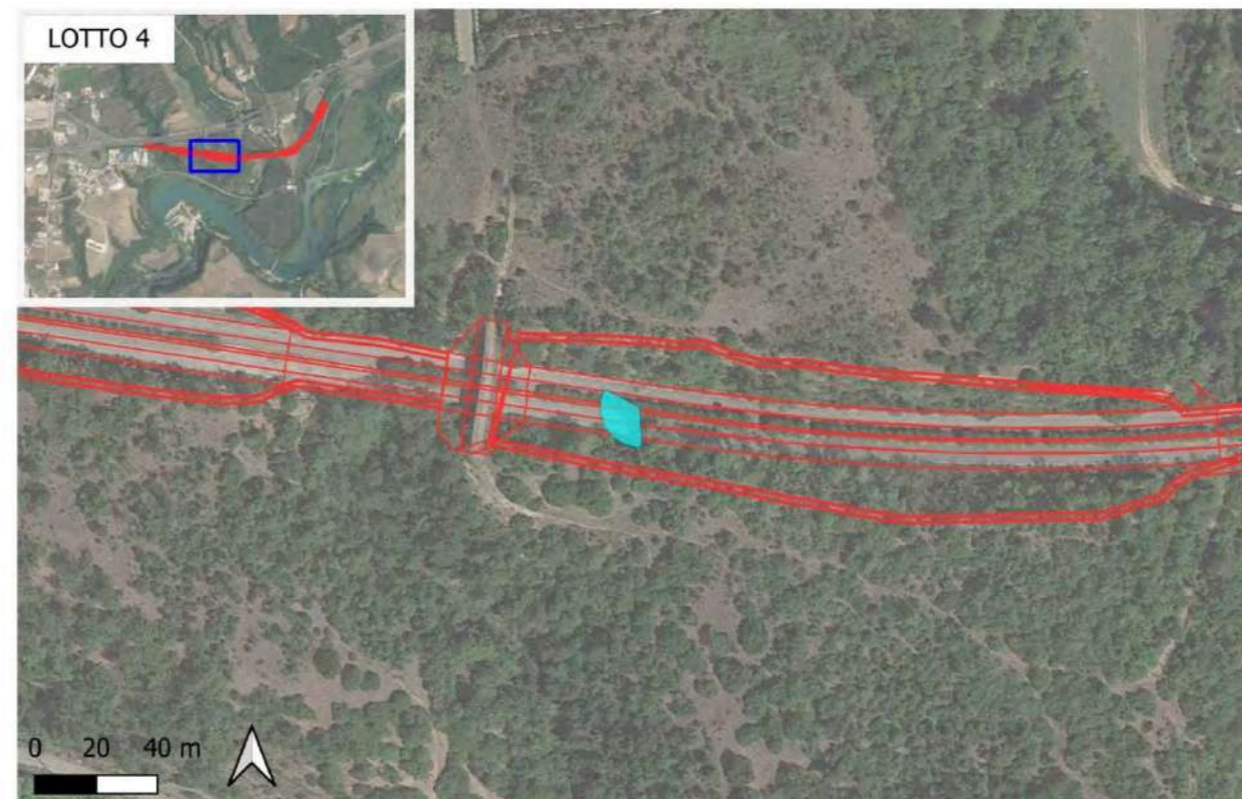
1 LOTTO 4

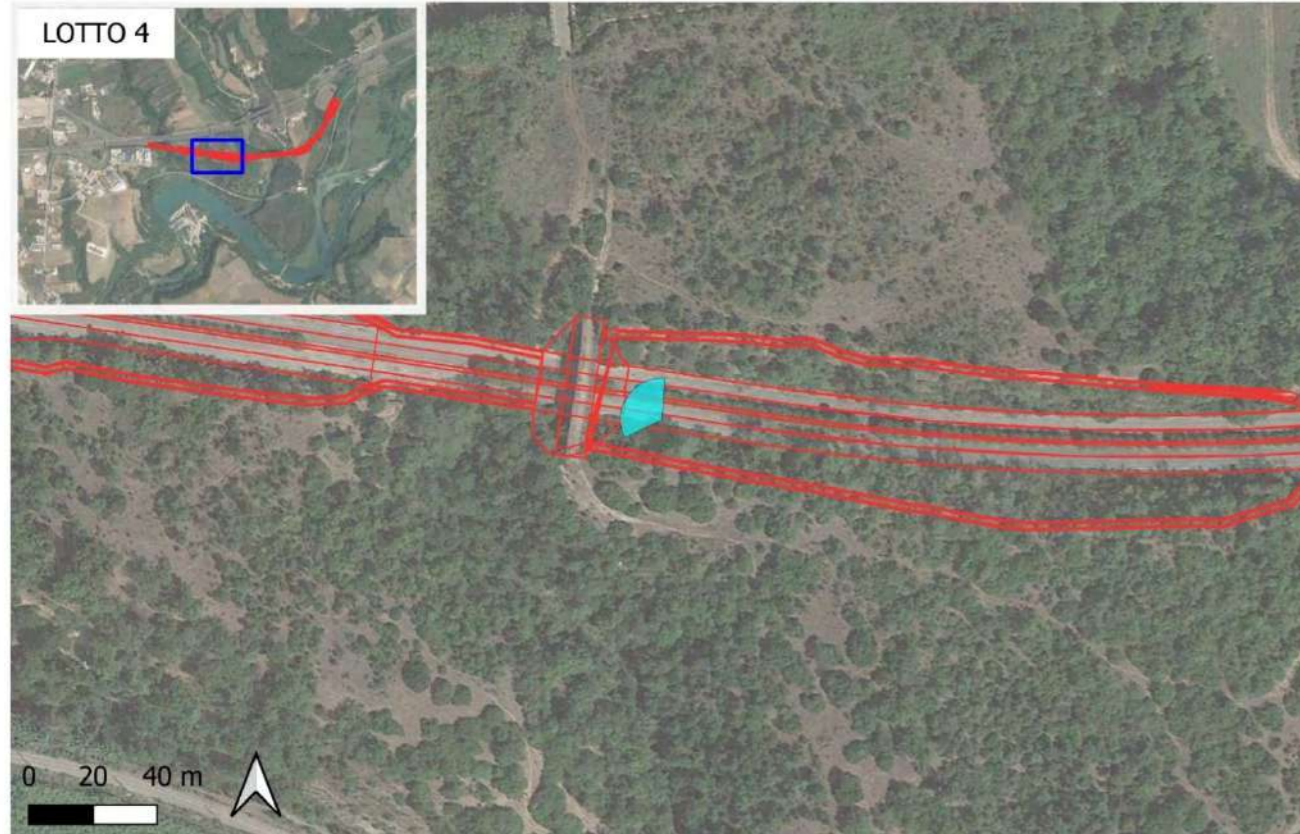


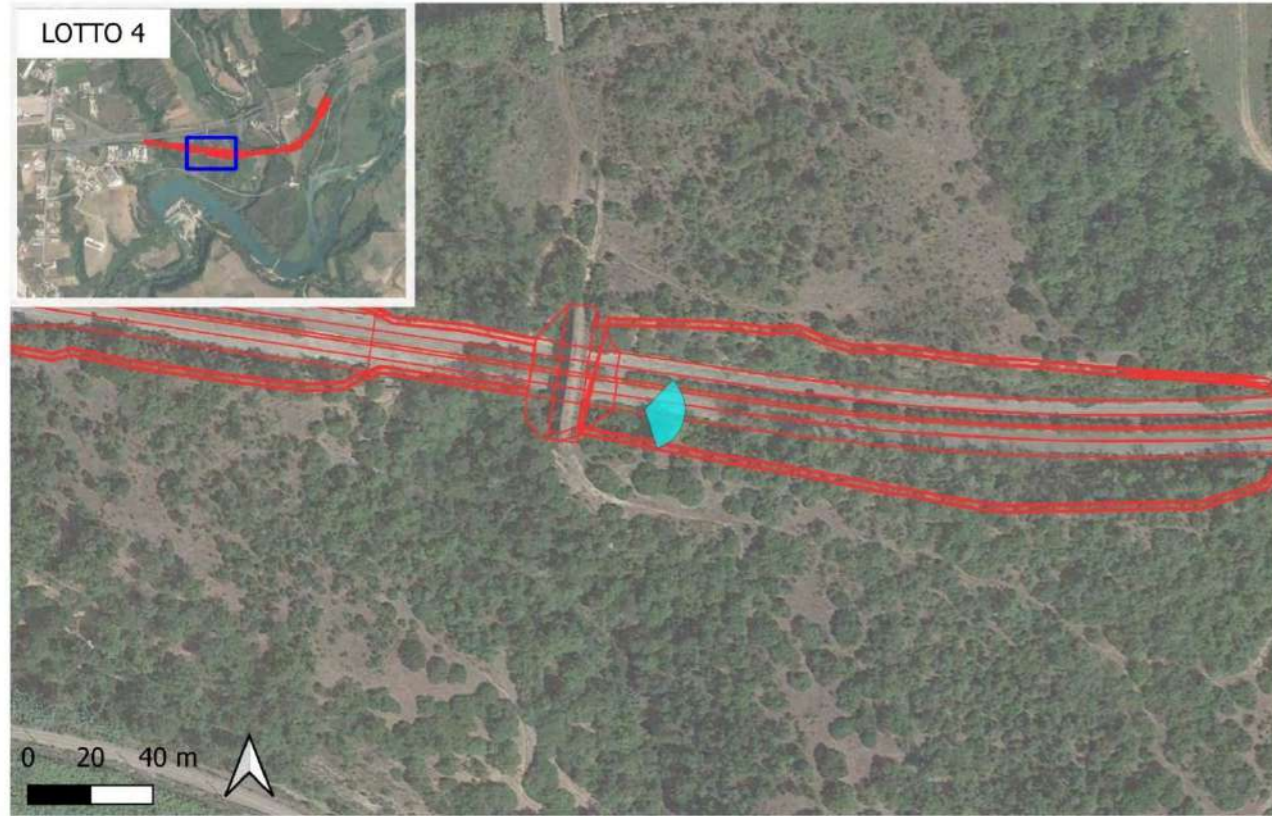


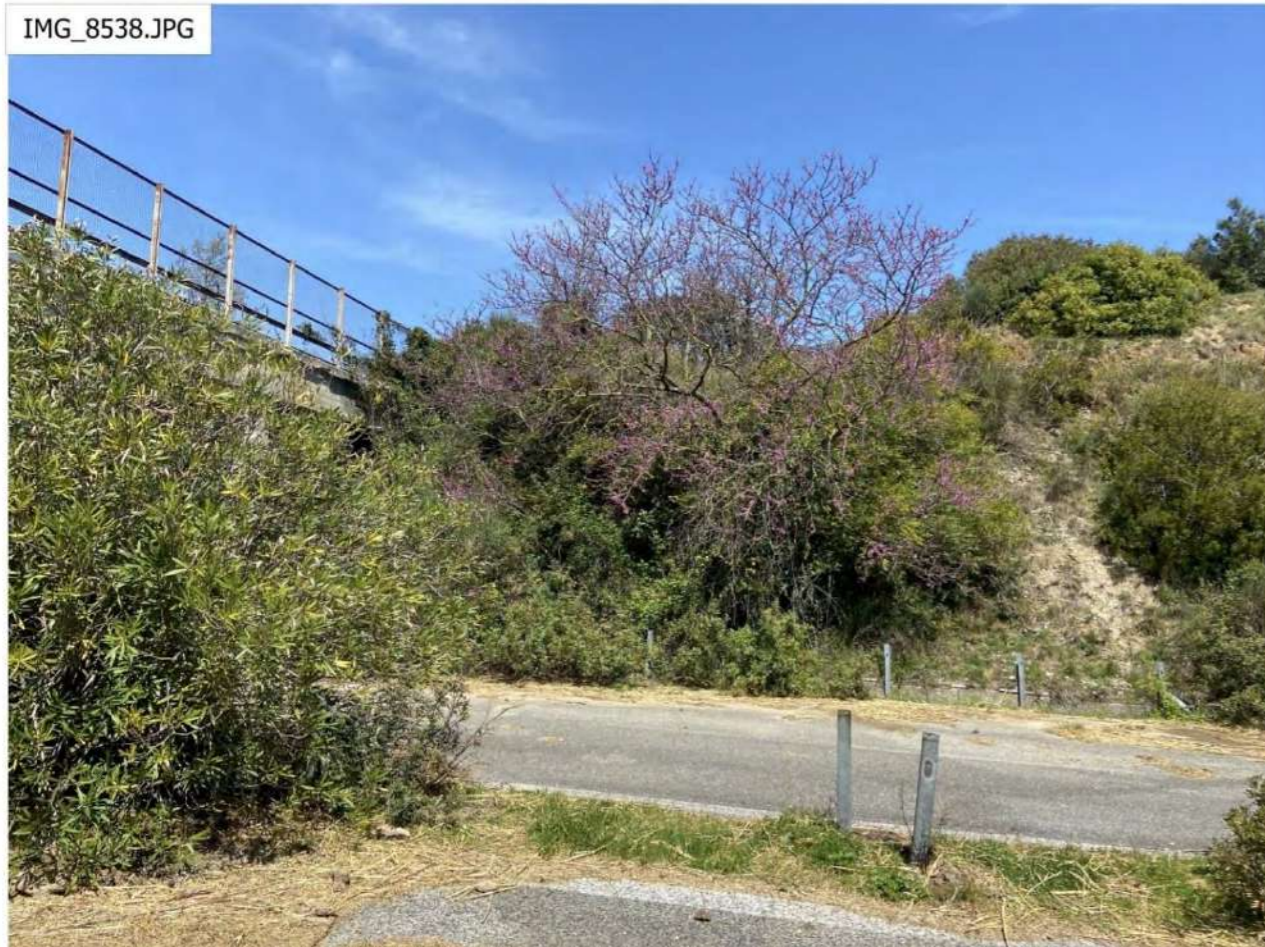
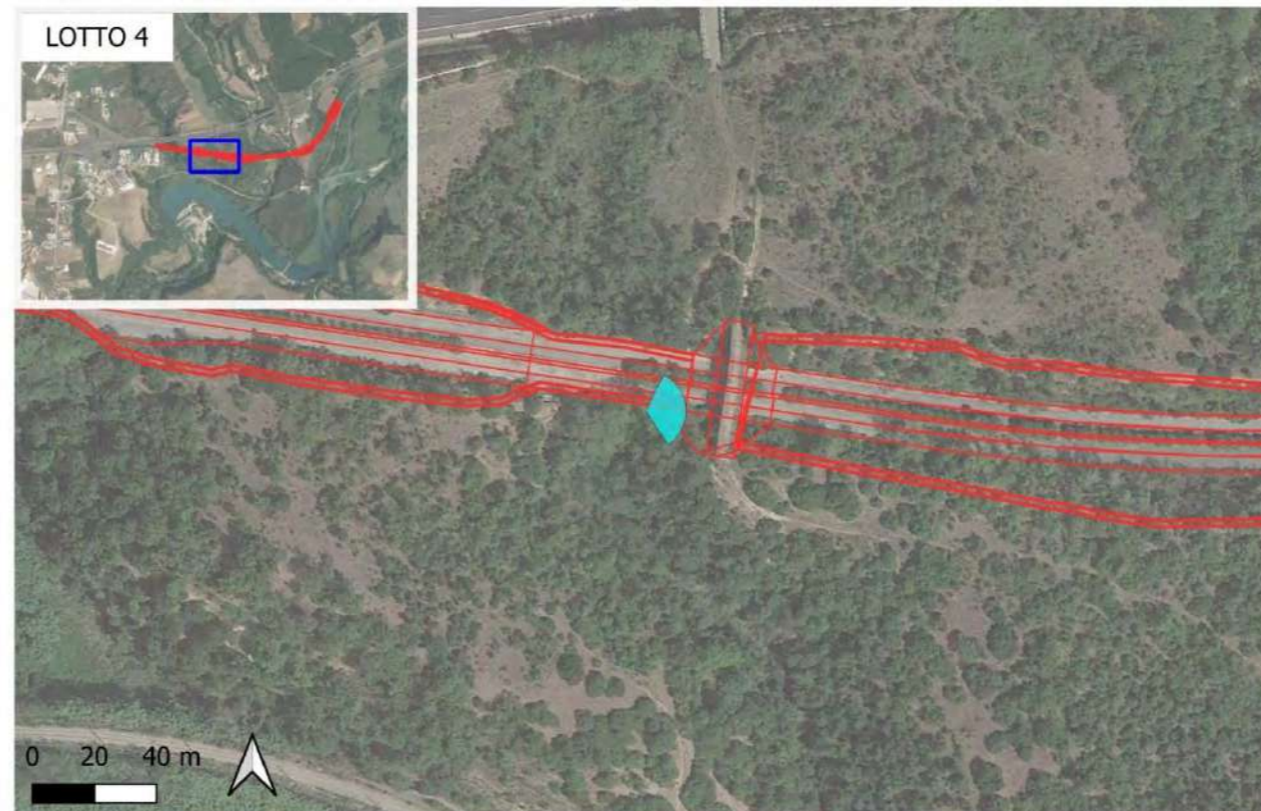
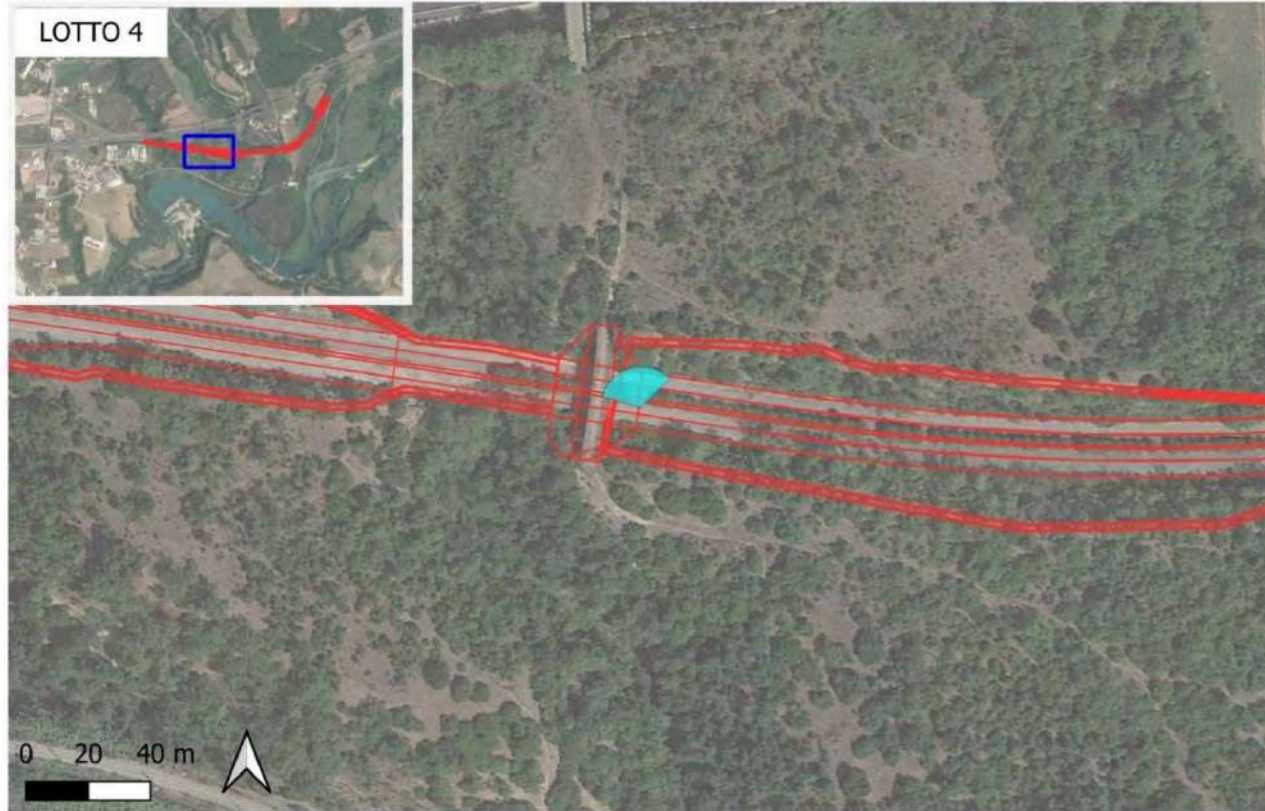


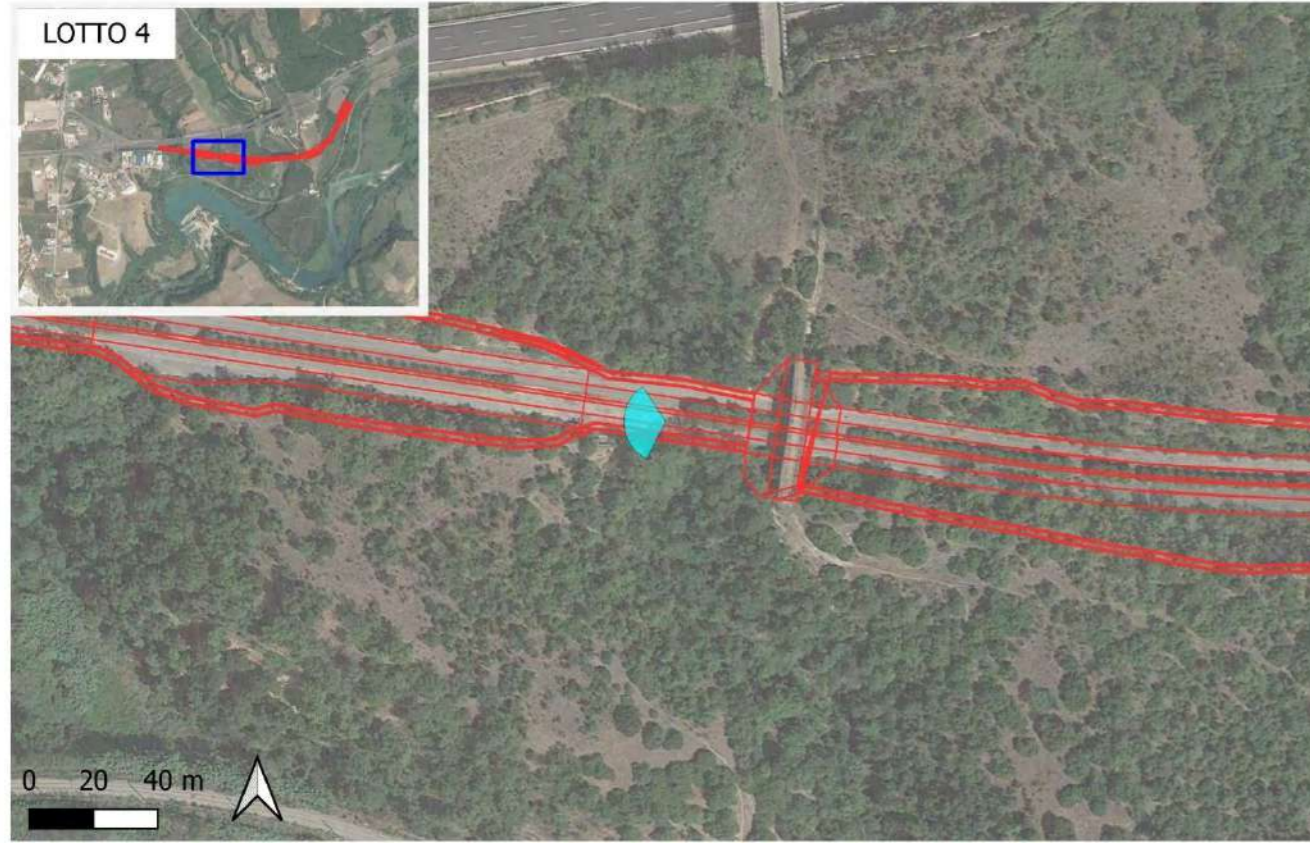


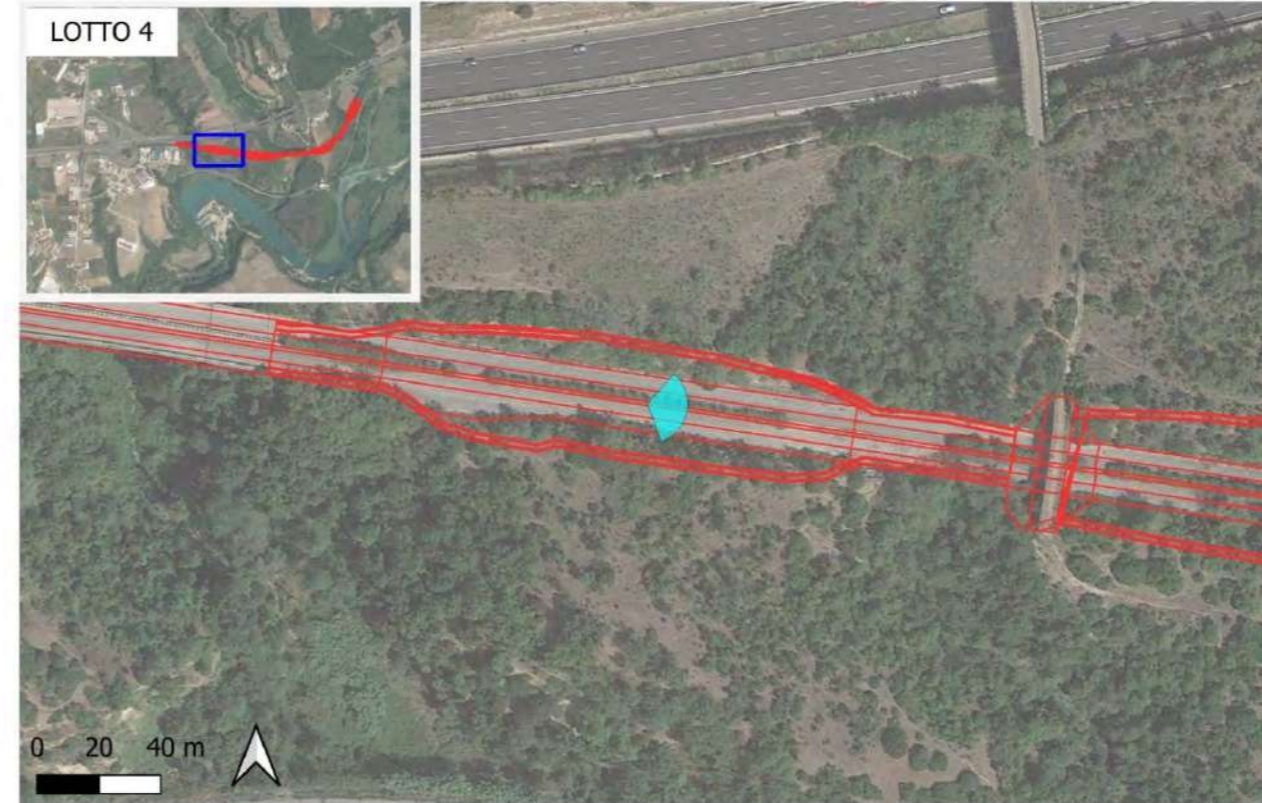
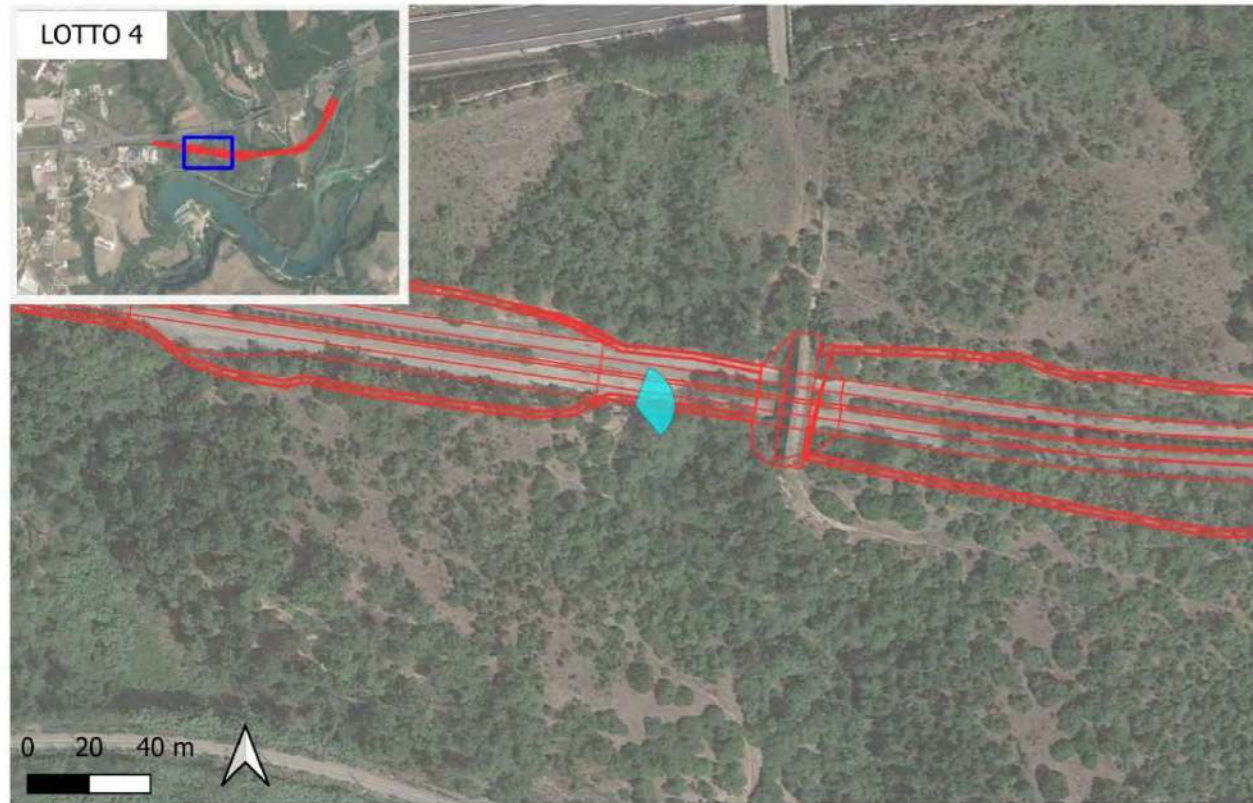


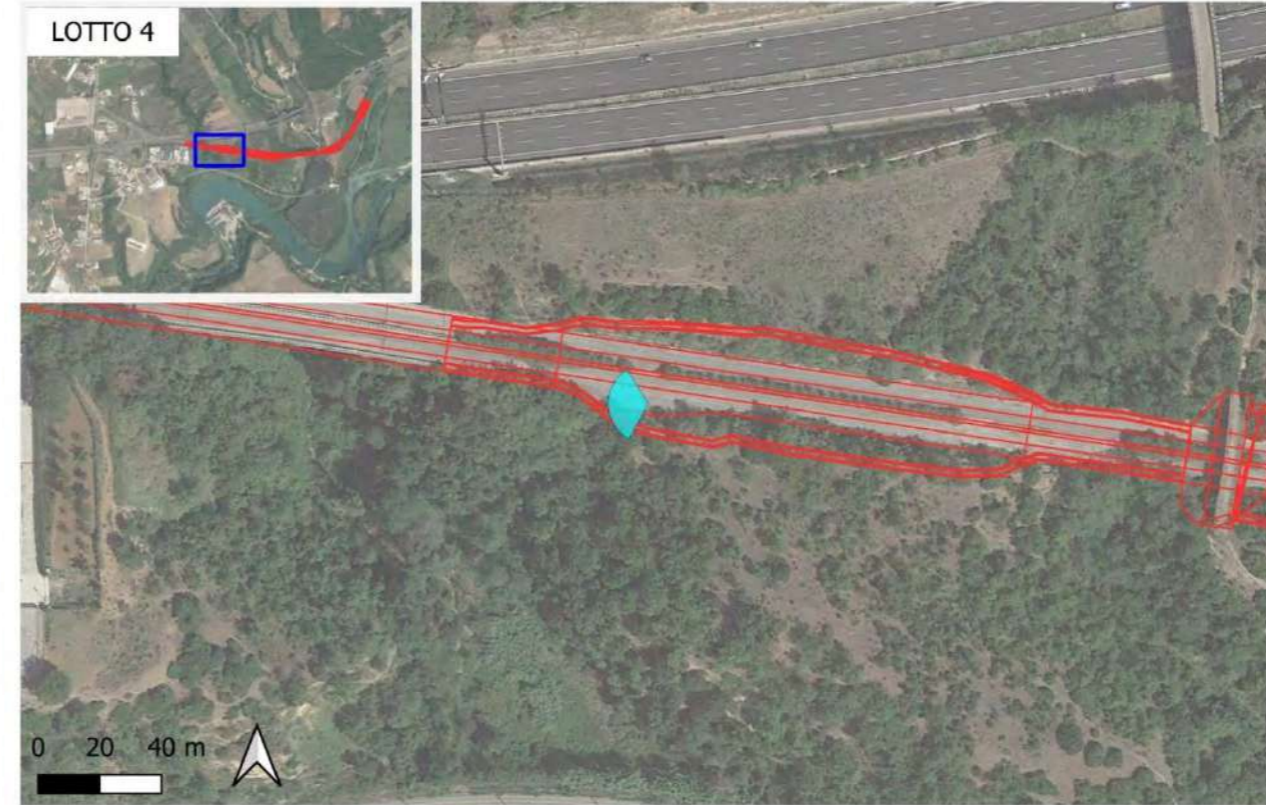
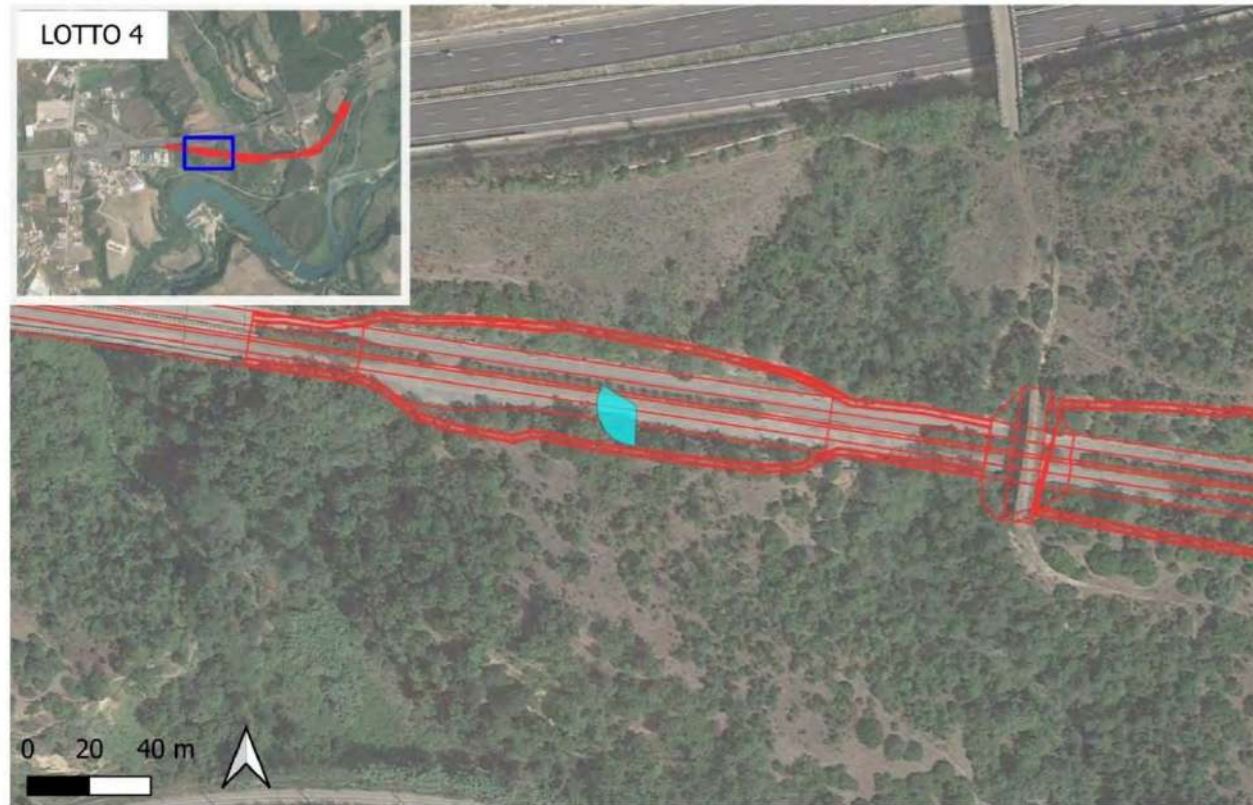


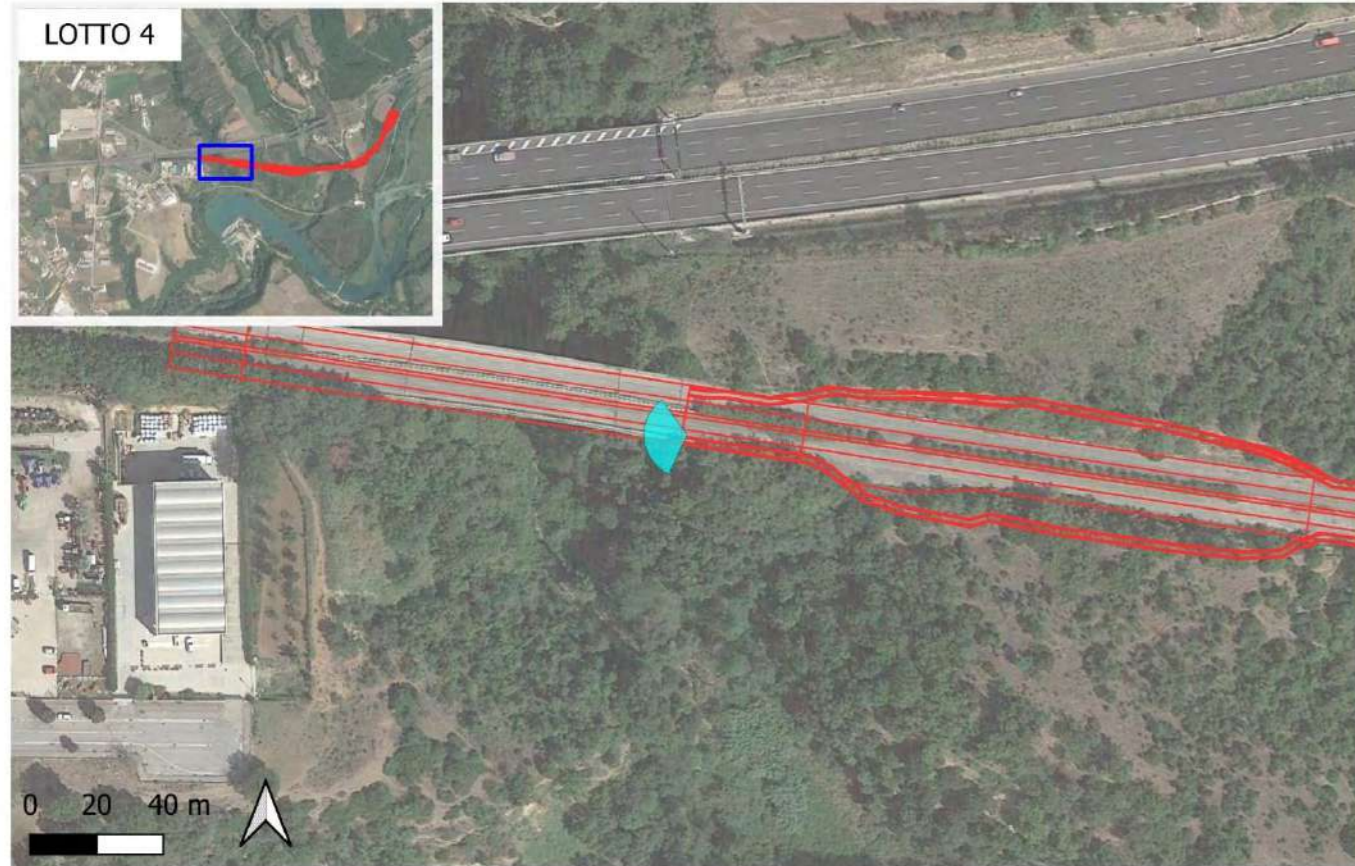


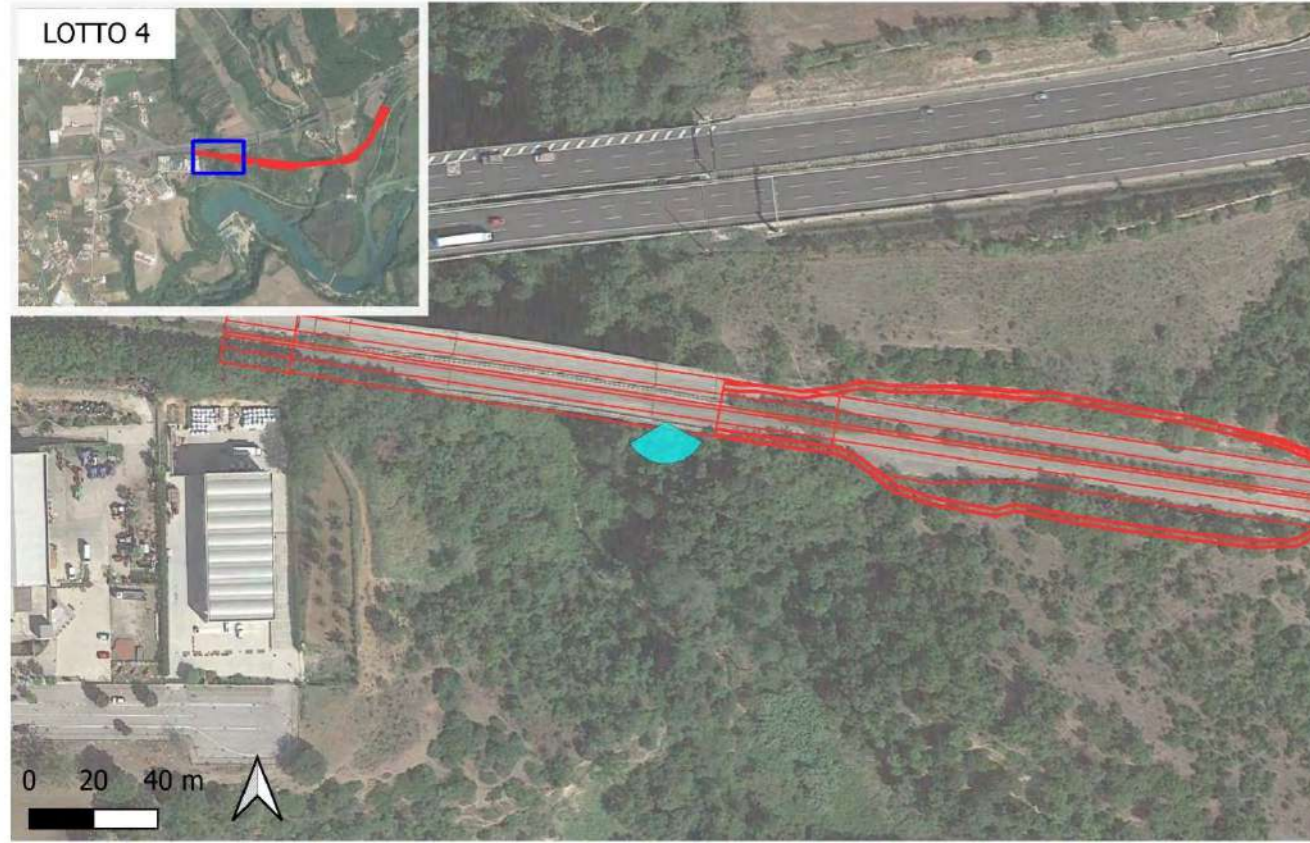


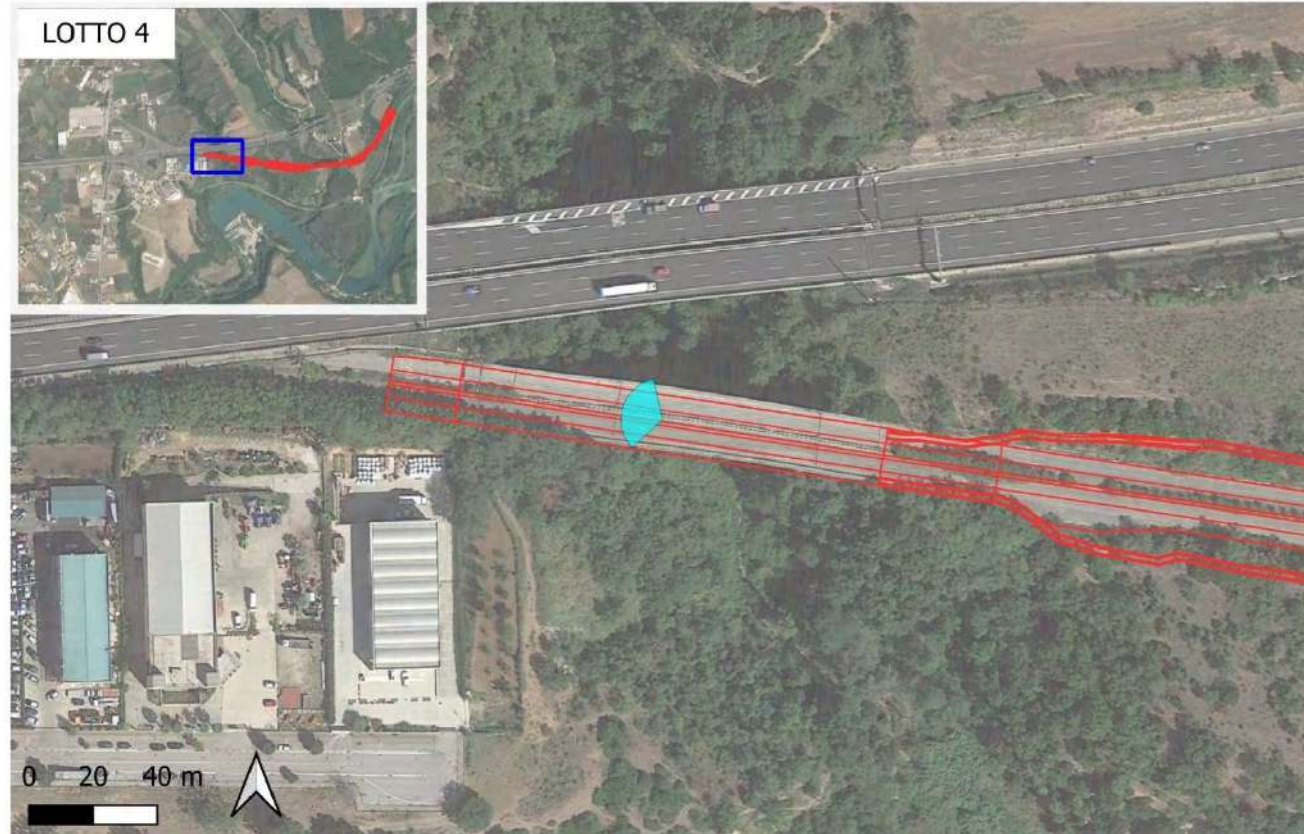


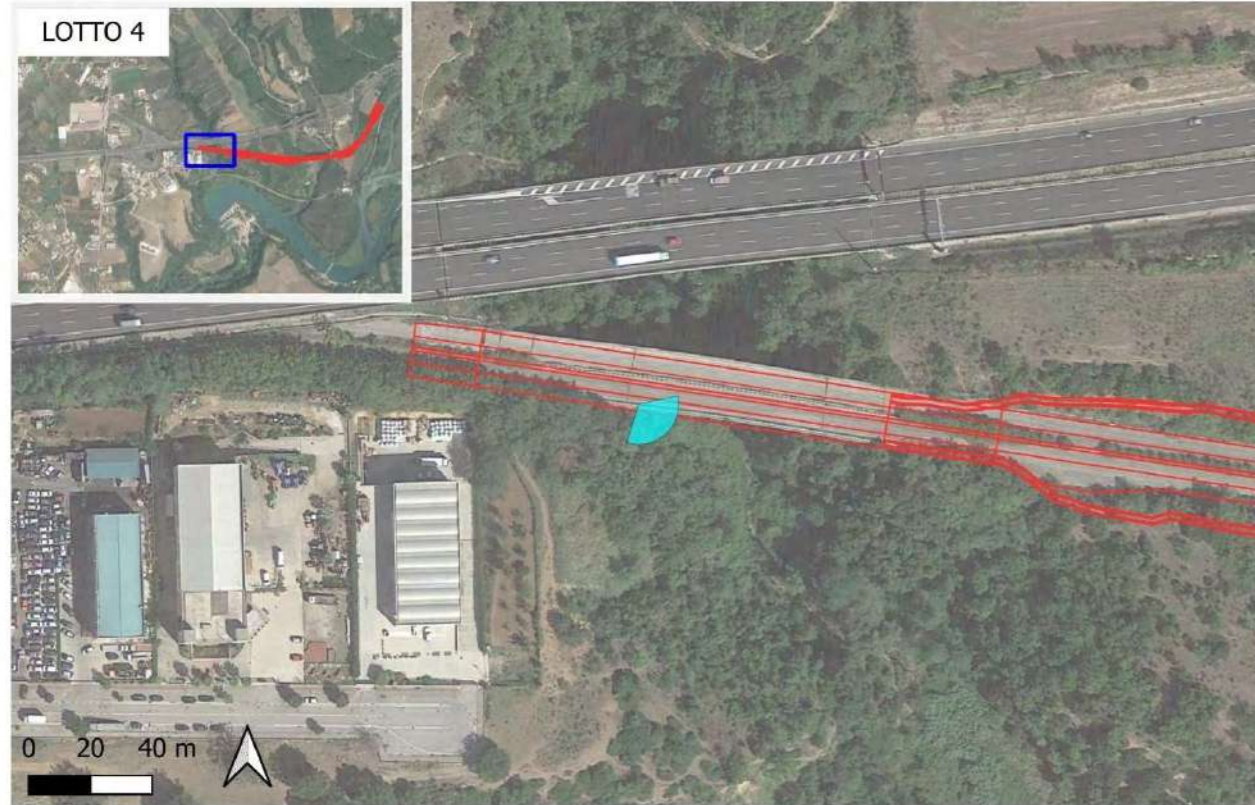


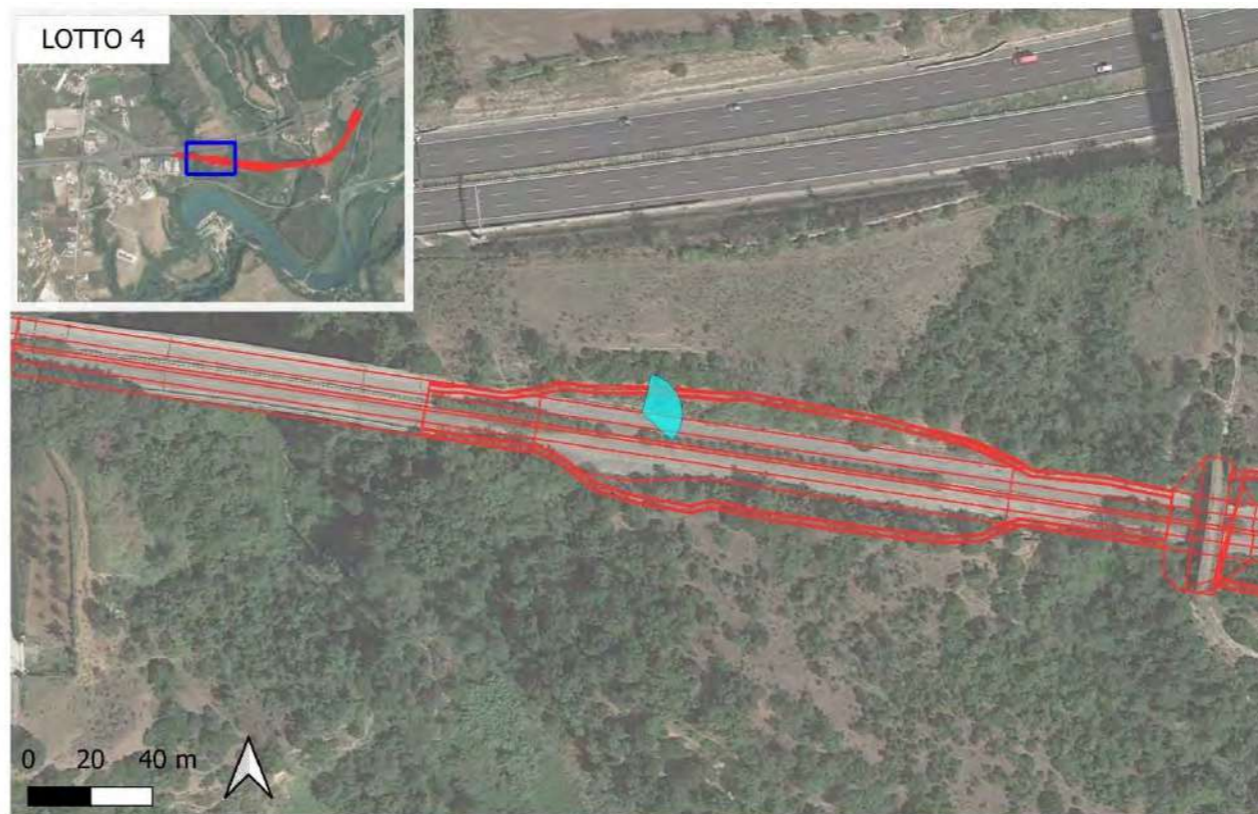












MANDATARIA

MANDANTE

