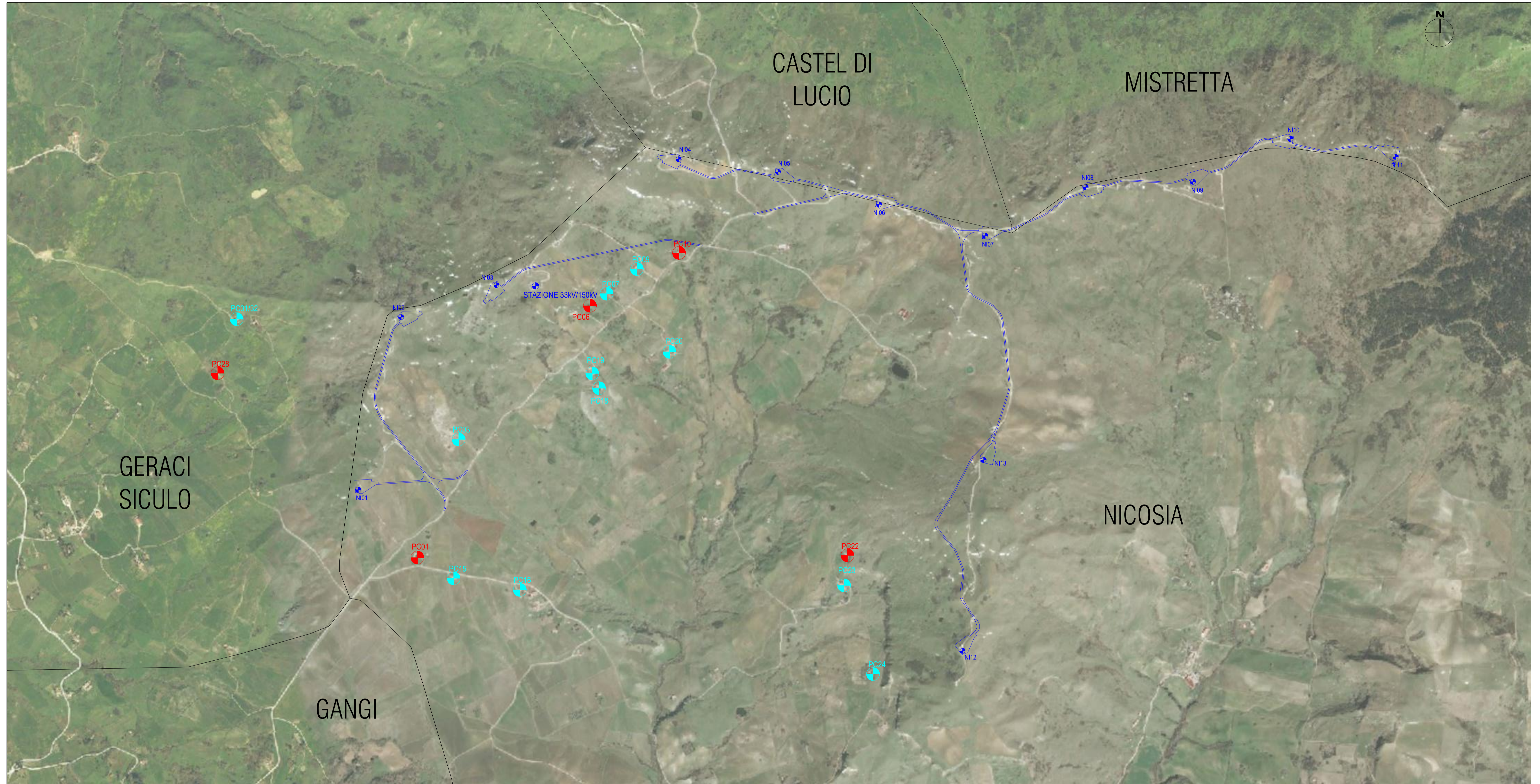






UBICAZIONE PUNTI DI CAMPIONAMENTO ACUSTICO - Scala 1:10.000

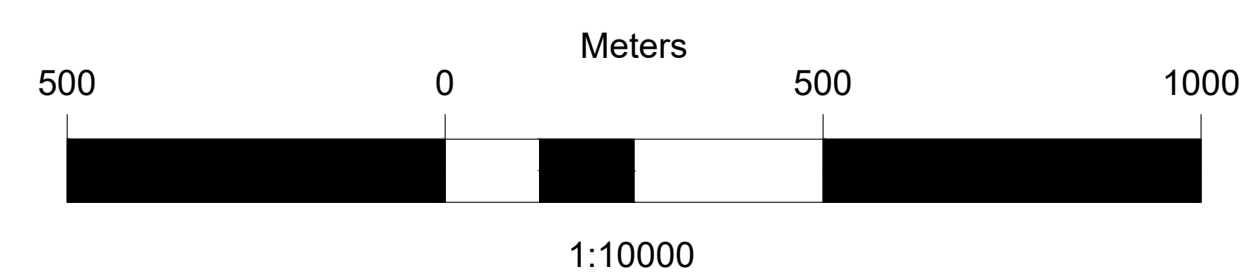


KEY MAP



LEGENDA

-  Aerogeneratori in progetto
-  Strade e piazzole in progetto
-  PC22 Punti di campionamento 24h
-  PC23 Punti di campionamento 3h



REV.	DATE	DESCRIPTION	PREPARED	CHECKED	APPROVED																																																
01	2024.07.04	Integrazioni MASE	G. Musso	S. Bossi	P. Polinelli																																																
00	2020.07.03	Prima emissione	M. Terzi	N. Novati	L. Lavazza																																																
<table border="1"> <tr> <td colspan="2">CONTRACTORS LOGO</td> <td colspan="4">PROJECT: INTEGRALE RICOSTRUZIONE DELL'IMPIANTO EOLICO DI NICOSIA</td> </tr> <tr> <td colspan="6">FILE NAME: GRE.EEC.D.73.IT.W.12420.05.003.01 - Ubicazione punti di campionamento acustico</td> </tr> <tr> <td colspan="2">CLASSIFICATION: PUBLIC</td> <td>FORMAT: A1</td> <td>SCALE: 1:10.000</td> <td>PLOT SCALE: -</td> <td>SHEET: 1 di 1</td> </tr> <tr> <td colspan="2">UTILIZATION SCOPE: BASIC DESIGN</td> <td colspan="4">TITLE: Ubicazione punti di campionamento acustico</td> </tr> <tr> <td colspan="2">VALIDATED BY: L. Iacofano</td> <td colspan="4">EGP CODE</td> </tr> <tr> <td colspan="2">VERIFIED BY: F. Specchia</td> <td>GROUP: GRE</td> <td>FUNCTION: EEC</td> <td>TYPE: D</td> <td>ISSUER: 73</td> </tr> <tr> <td colspan="2">COLLABORATORS:</td> <td>COUNTRY: IT</td> <td>PLANT: W12420</td> <td>SYSTEM: 05</td> <td>PROGRESSIVE: 00301</td> </tr> <tr> <td colspan="6"> <small>This document is property of Enel Green Power SpA. It is strictly forbidden to reproduce this document, in whole or in part, and to provide to others any related information without the previous written consent by Enel Green Power SpA.</small> </td> </tr> </table>						CONTRACTORS LOGO		PROJECT: INTEGRALE RICOSTRUZIONE DELL'IMPIANTO EOLICO DI NICOSIA				FILE NAME: GRE.EEC.D.73.IT.W.12420.05.003.01 - Ubicazione punti di campionamento acustico						CLASSIFICATION: PUBLIC		FORMAT: A1	SCALE: 1:10.000	PLOT SCALE: -	SHEET: 1 di 1	UTILIZATION SCOPE: BASIC DESIGN		TITLE: Ubicazione punti di campionamento acustico				VALIDATED BY: L. Iacofano		EGP CODE				VERIFIED BY: F. Specchia		GROUP: GRE	FUNCTION: EEC	TYPE: D	ISSUER: 73	COLLABORATORS:		COUNTRY: IT	PLANT: W12420	SYSTEM: 05	PROGRESSIVE: 00301	<small>This document is property of Enel Green Power SpA. It is strictly forbidden to reproduce this document, in whole or in part, and to provide to others any related information without the previous written consent by Enel Green Power SpA.</small>					
CONTRACTORS LOGO		PROJECT: INTEGRALE RICOSTRUZIONE DELL'IMPIANTO EOLICO DI NICOSIA																																																			
FILE NAME: GRE.EEC.D.73.IT.W.12420.05.003.01 - Ubicazione punti di campionamento acustico																																																					
CLASSIFICATION: PUBLIC		FORMAT: A1	SCALE: 1:10.000	PLOT SCALE: -	SHEET: 1 di 1																																																
UTILIZATION SCOPE: BASIC DESIGN		TITLE: Ubicazione punti di campionamento acustico																																																			
VALIDATED BY: L. Iacofano		EGP CODE																																																			
VERIFIED BY: F. Specchia		GROUP: GRE	FUNCTION: EEC	TYPE: D	ISSUER: 73																																																
COLLABORATORS:		COUNTRY: IT	PLANT: W12420	SYSTEM: 05	PROGRESSIVE: 00301																																																
<small>This document is property of Enel Green Power SpA. It is strictly forbidden to reproduce this document, in whole or in part, and to provide to others any related information without the previous written consent by Enel Green Power SpA.</small>																																																					