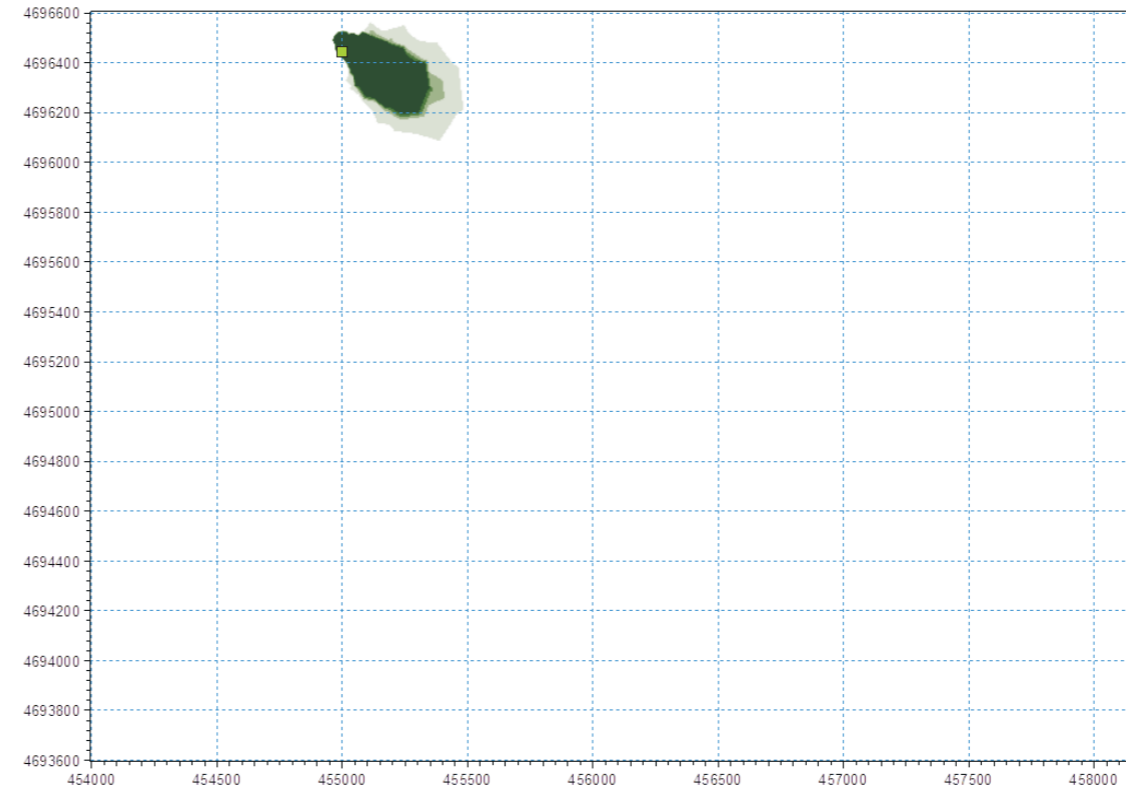
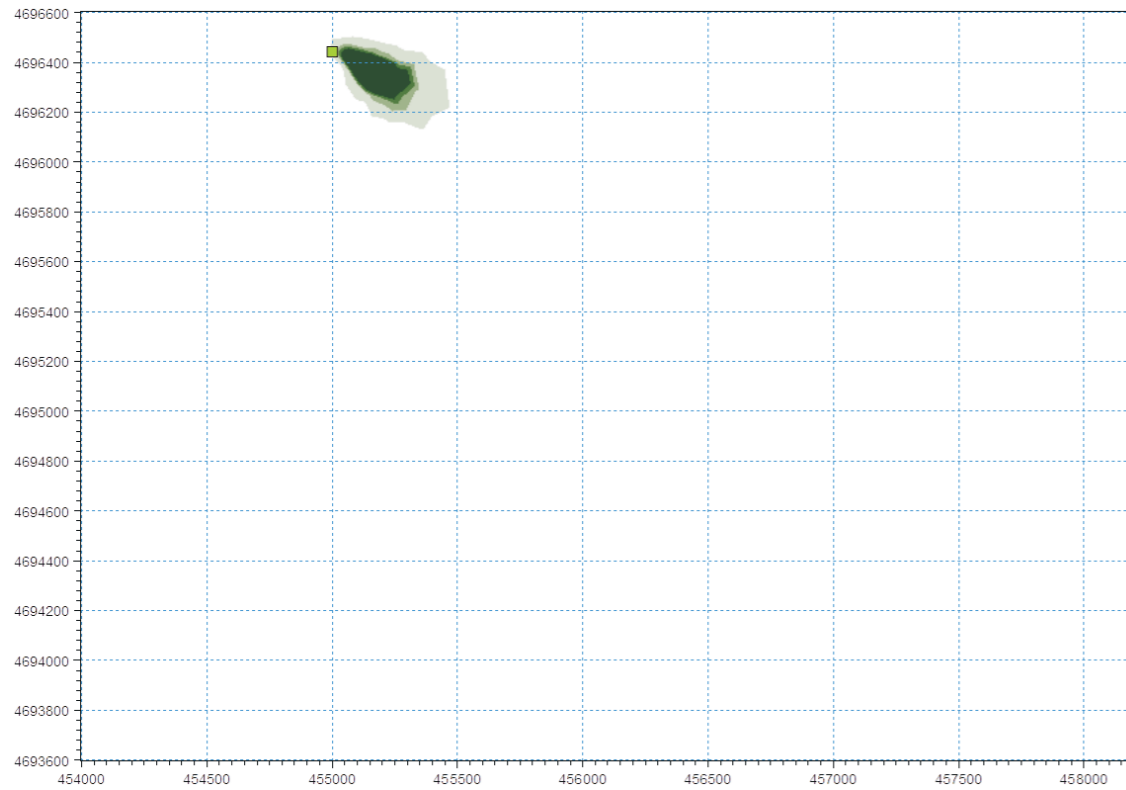


PLUME CON MASSIMI VALORI DI CONCENTRAZIONE  
t = 2 h 40'

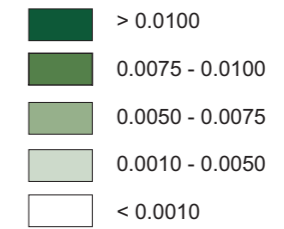
a) Sezione a 5 m dal fondo

b) Sezione a 1 m dal fondo



LEGENDA

CONCENTRAZIONE DI MERCURIO [ $\mu\text{g/l}$ ]



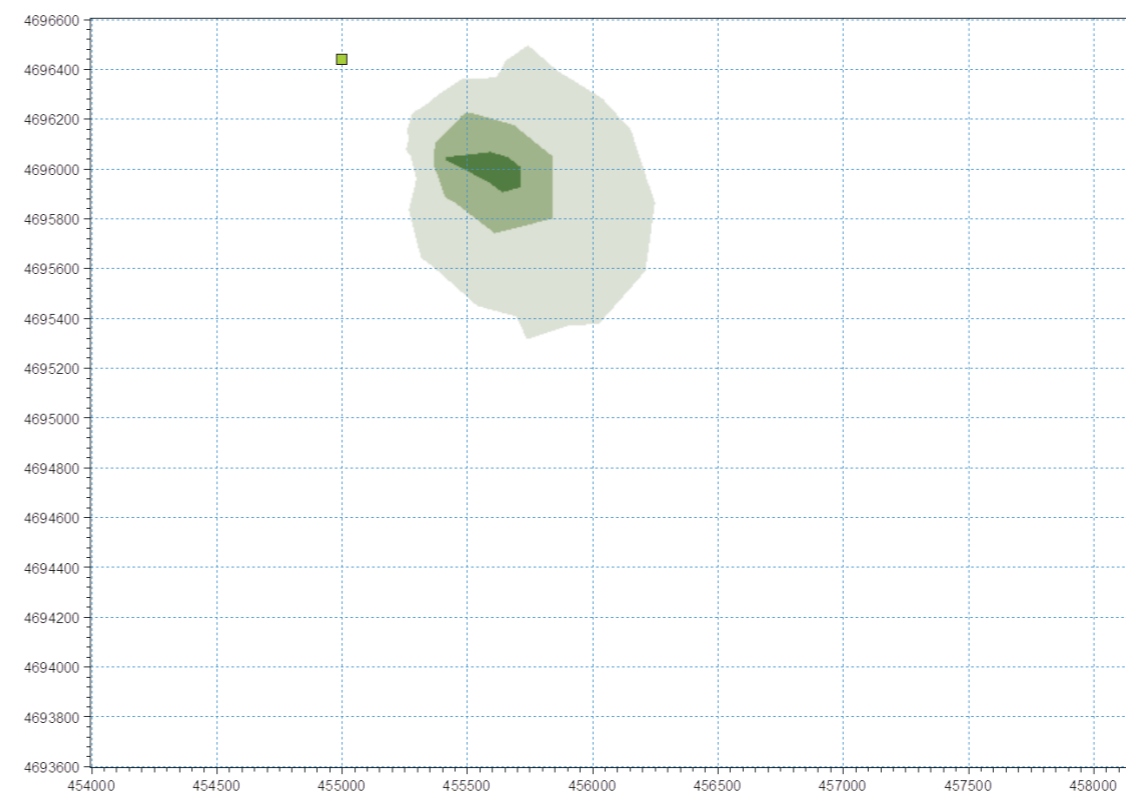
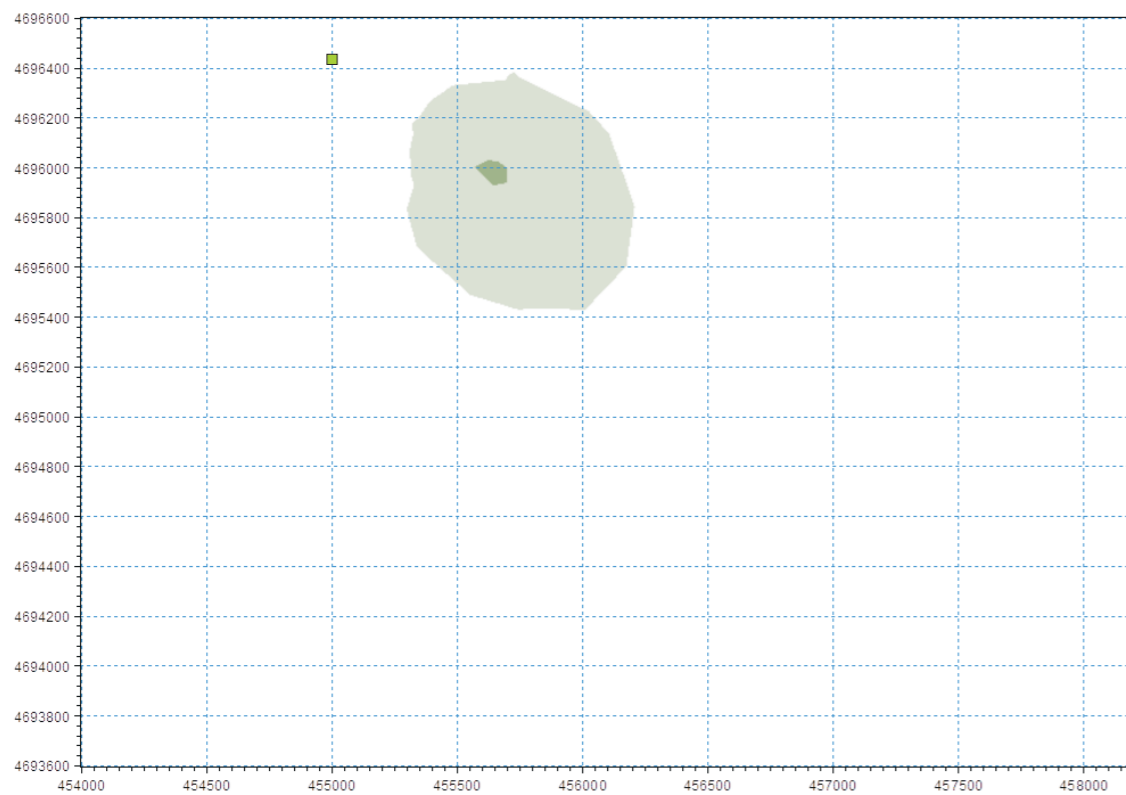
POZZO ESPLORATIVO ELSA 2

Dati corrente:  
v = 10 cm/s  
d = SE

PLUME CON MASSIMA ESTENSIONE  
t = 5 h 10'

a) Sezione a 5 m dal fondo

b) Sezione a 1 m dal fondo



KEY MAP

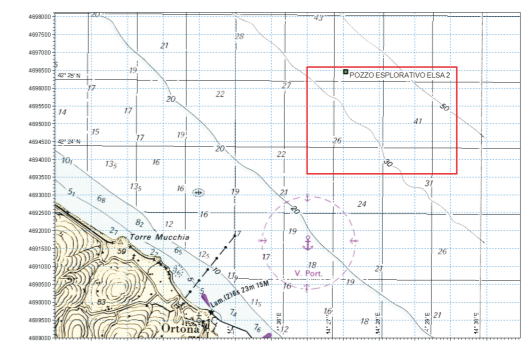


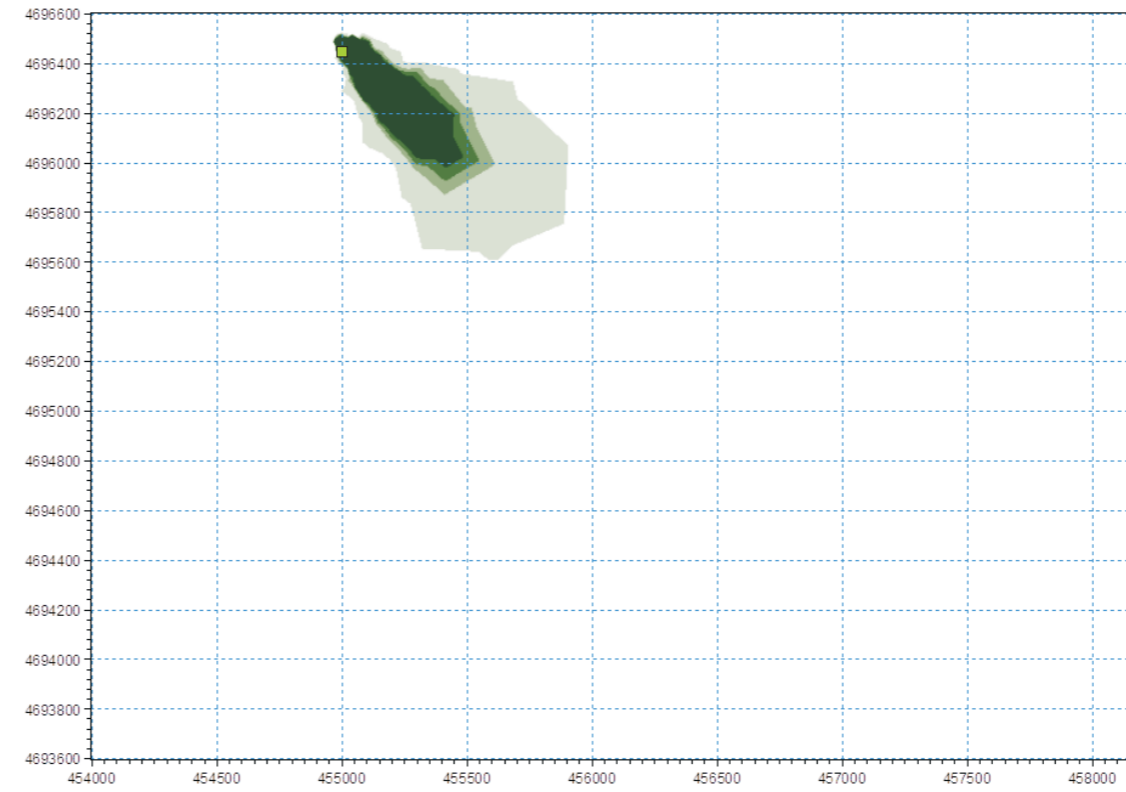
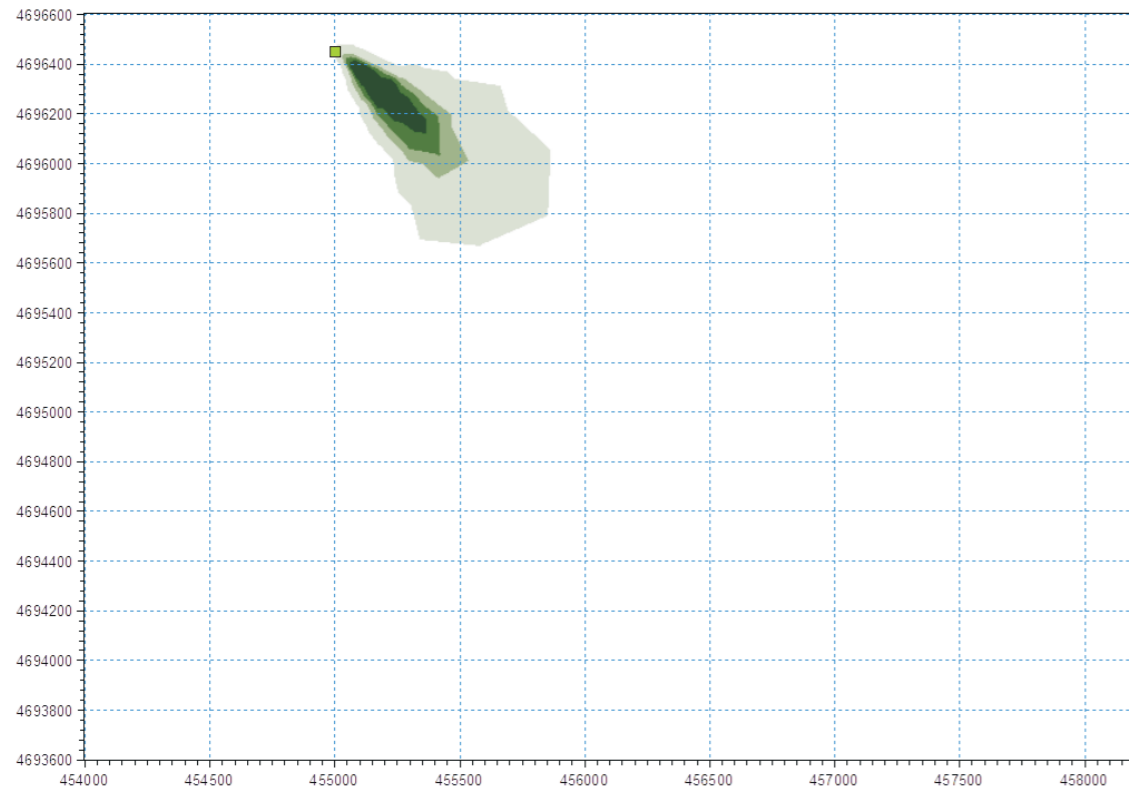
FIGURA 4.7a

ANALISI DI RISOSPENSIONE DEI SEDIMENTI  
CONCENTRAZIONI DI MERCURIO  
SCENARIO S1 (CORRENTE v = 10 cm/s)

PLUME CON MASSIMI VALORI DI CONCENTRAZIONE  
t = 2 h 40'

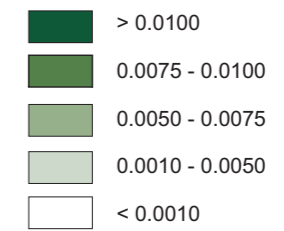
a) Sezione a 5 m dal fondo

b) Sezione a 1 m dal fondo



LEGENDA

CONCENTRAZIONE DI MERCURIO [ $\mu\text{g/l}$ ]



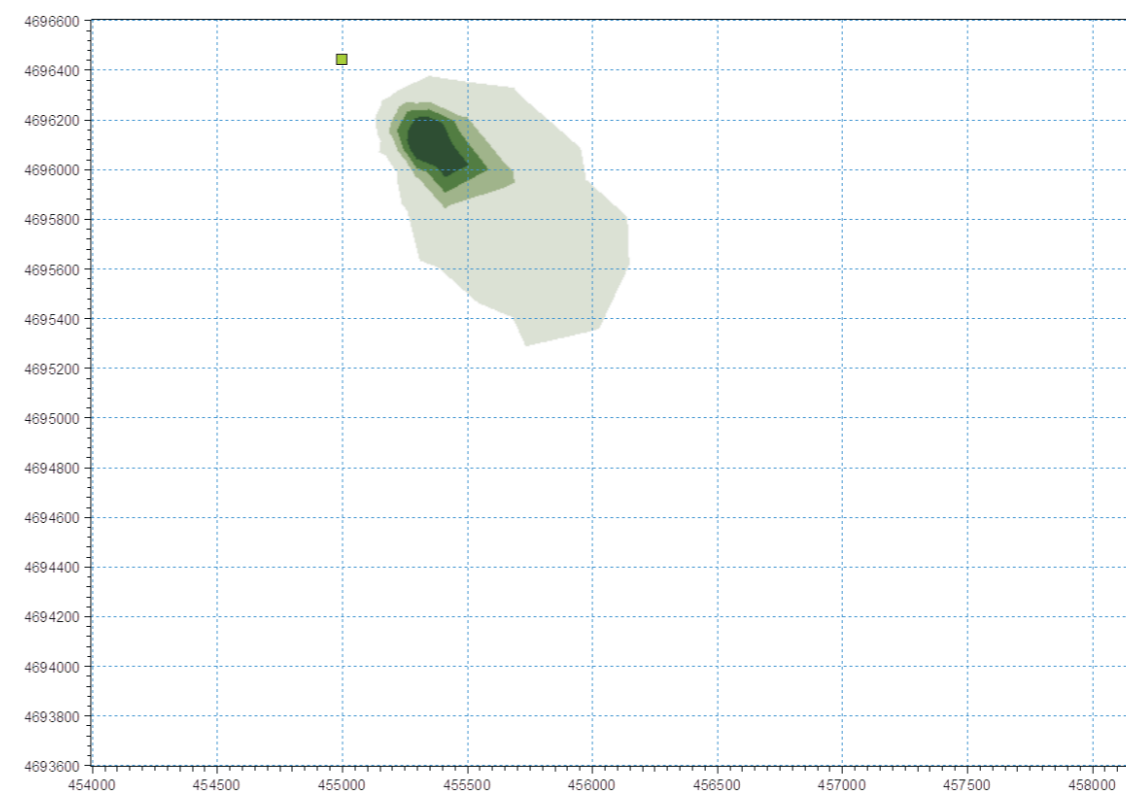
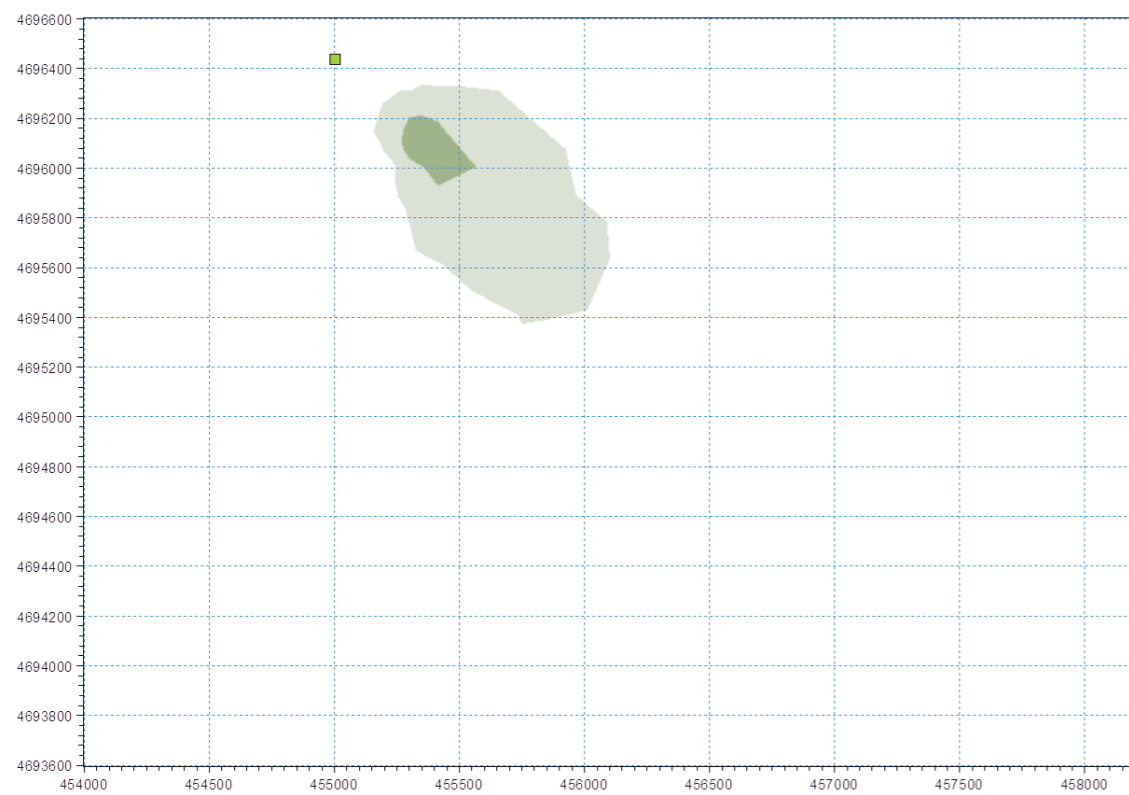
POZZO ESPLORATIVO ELSA 2

Dati corrente:  
v = 30 cm/s  
d = SE

PLUME CON MASSIMA ESTENSIONE  
t = 3 h 10'

a) Sezione a 5 m dal fondo

b) Sezione a 1 m dal fondo



KEY MAP

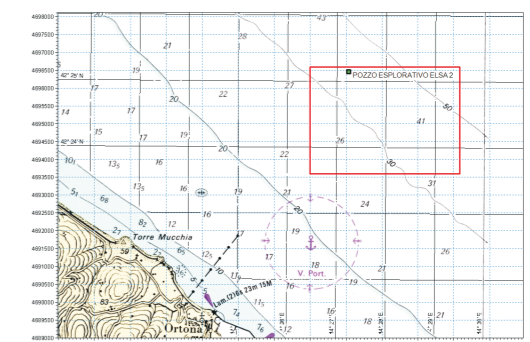


FIGURA 4.7b

ANALISI DI RISOSPENSIONE DEI SEDIMENTI  
CONCENTRAZIONI DI MERCURIO  
SCENARIO S2 (CORRENTE v = 30 cm/s)