

Appendice B
Scheda Tecnica e Planimetrie Jack-up Tipico
"GSP Jupiter"

GSP JUPITER



GSP JUPITER

DRILLING RIGS •

www.gspoffshore.com





TECHNICAL DATA

GENERAL

Rig Type:	Four legs, self elevating unit, cantilever type
Design:	Sonnat Offshore Company
Builder:	Galatzi Shipyard, Romania
Year Built:	1987, rebuilt in 2007
Classification:	ABS
Flag:	Malta
Accommodation:	95 + 2 Hospital
Helideck:	80 x 80 ft, rated for PUMA SA 330 B / BELL 212 – 412 helicopter
Max. Drill Depth:	30,000 ft
Max. Water Depth:	300 ft (91 m)
Operating Conditions:	Wave: 30 ft @ 12 sec; Wind: 50 knots; Surface Current: 2 knots
Storm Conditions:	Wave: 39 ft @ 10 sec; Wind: 86 knots; Surface Current: 2 knots

TECHNICAL DIMENSIONS

Length:	172 ft / 52.4 m
Breadth:	134 ft / 40.8 m
Depth:	21 ft / 6.4 m

Ocean Transit Draft:	32 ft / 9.75 m
VDL – Operating:	2,200 st / 2,000 mt

CAPACITIES

Liquid Mud:	1,880 bbls / 10,555 cu ft / 299 m ³
Drill Water:	3,302 bbls / 18,539 cu ft / 525 m ³
Potable Water:	1,272 bbls / 7,142 cu ft / 202.3 m ³
Fuel Oil:	1,640 bbls / 9,208 cu ft / 260.8 m ³
Bulk Mud:	4,620 ft ³ / 131 m ³
Bulk Cement:	4,620 ft ³ / 131 m ³
Sack Material:	1,000 sacks

DRILLING EQUIPMENT

Derrick:	Hollandia, 166.9 ft x 45 ft x 30 ft; 1,000 kips static hook load
Drawworks:	Upetrom, TFM-55E, 2,500 HP; EDS Brakes Varco
Driller's Cabin:	Double Chairs, X-Com Sense EDM
Top Drive:	NOV, TDS 11 SA – 500 tons
Rotary:	Upetrom, MRL-375, 37 ½ in opening, independent drive



TECHNICAL DATA

Pipe Handling:	NOV IR-3080 Iron Roughneck NOV X-Racker (double arms) Telescopic Mousehole SENSE EDM Automatic finger board Blohm+Voss air operated elevator SENSE Control System Integrated
Mud Pumps:	3 x Triplex x 1,600 HP each, 7,500 PSI WP
Shale Shakers:	4 no x Mongoose Swaco, PT Dual Motions
Desilter & Desander:	1 x Swaco, 16 x 4 in cones, 1,000 gpm
Mud Cleaner:	Mongoose PT Dual Motions
BOP:	1 x Stack 13 - 5/8 in T3 Energy composed of annular 10 K + 4 Rams 15 K, 1 x Stack 20 - 3/4 in T3 Energy composed of annular 5 K + 2 Rams 5 K
Diverter:	Hydrill 29 1/2 in x 500 psi with 2 x 12 in hydraulic valves
Control System:	Koomey 80 / T30240-3S/FA-43, 3,000 psi
Choke & Kill:	1 x 3 in x 15 K choke manifold with 2 x 3 - 1 / 16 in x 15 K remote control choke 2 x 3 - 1 / 16 in x 15 K manual chokes
Cementing:	Schlumberger Cementing Unit (Third Party)

MACHINERY

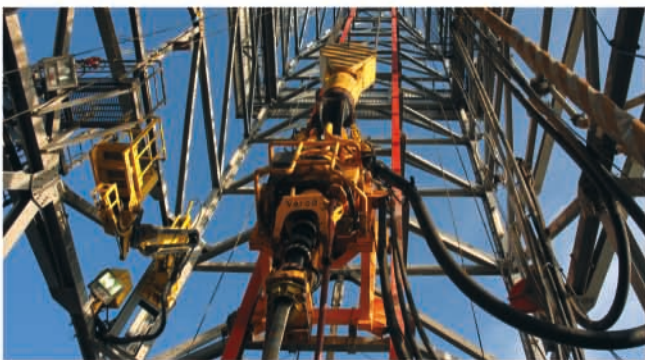
Main Power:	5 x Caterpillar 3512 Diesel Engines, 8,430 HP total, 600 V, AC
Emergency Power:	1 x Caterpillar C-18, 587 HP, 400 V, AC
Power Distribution:	9 x Siemens SIMOREG DC Master 6 RA 7093-4 KS 22-0-2, 600 V
Deck Cranes:	2 x AmClyde 10000, 40 mt @ 14.4 ft 1 x AmClyde 10000LD, 25 mt @ 18.7 ft

JACK-UP SPECIFICATIONS

Legs:	Triangle; 4 x 399 ft; usable below hull = 352.75 ft
Leg Spacing:	Longitudinal 126 ft; Transverse 109 ft
Spud Cans:	38.83 ft diameter x 8.11 ft height
Jacking System:	Orion Class Pin & Hole
Cantilever / Slot:	Cantilever 55 ft x 20 ft

MOORING EQUIPMENT

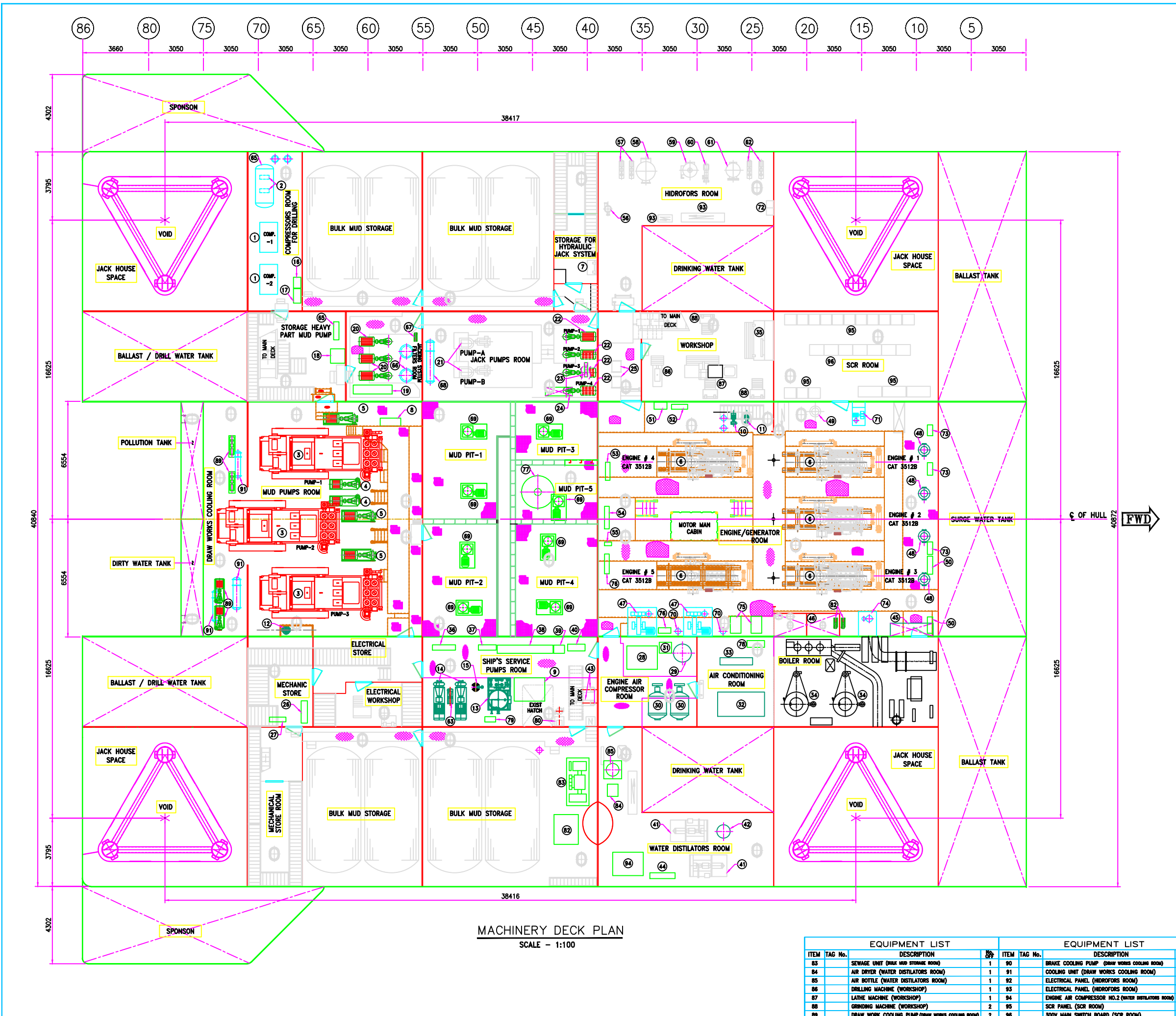
Winches:	2 ea x 20 to, B type, electric drive
Wire / Chain:	1 1/4 in x 300 m
Anchors:	2 x 4.5 to Hall





Constanta Port, Berth 34, 900900,
Constanta, Romania • office@gspoffshore.com
Tel.: +40 241 555 255 • Fax: +40 241 555 257

www.gspoffshore.com



MACHINERY DECK PLAN
SCALE - 1:100

EQUIPMENT LIST			
ITEM	TAG No.	DESCRIPTION	QTY
1		AIR DRILLING COMPRESSORS (COMPRESSOR ROOM)	2
2		COMPRESSED AIR DRYER (COMPRESSOR ROOM)	2
3		MUD PUMPS (MUD PUMPS ROOM)	2
4		MIXING PUMPS (MUD PUMPS ROOM)	2
5		CHARGING PUMPS (MUD PUMPS ROOM)	3
6		ENGINE/GENERATOR (ENGINE ROOM)	5
7		GRINDING MACHINE (STRONG FOR HYDRAULIC JACK SYSTEM ROOM)	1
8		ELECTRICAL PANEL (MUD PUMP ROOM)	1
9		AIR COMPRESSOR (SHIP'S SERVICE PUMPS ROOM)	1
10		LUBE OIL PUMP (ENGINE ROOM)	1
11		DIRTY OIL PUMP (ENGINE ROOM)	1
12		WILDEN PUMP-2 (MUD PUMPS ROOM)	1
13		OILY WATER SEPARATOR (SHIP'S SERVICE PUMPS ROOM)	1
14		DRILLING WATER TRANSFER PUMPS (SHIP'S SERVICE PUMPS ROOM)	2
15		WILDEN PUMP-3 (SHIP'S SERVICE PUMPS ROOM)	1
16		PANEL (T-17) (COMPRESSOR ROOM FOR DRILLING)	1
17		PANEL (T-40) (COMPRESSOR ROOM FOR DRILLING)	1
18		PANEL (T-14) (STORAGE HEAVY PART MUD PUMP)	1
19		PANEL (T-15) (JACKING SYSTEM FILTERS ROOM)	1
20		SUPER CHARGE CENTRIFUGAL PUMP (MUD PUMPS ROOM)	3
21		PISTON PUMP (JACK PUMPS ROOM)	2
22		VANE PUMP (JACK PUMPS ROOM)	4
23		ELECTRICAL PANEL (JACK PUMPS ROOM)	1
24		ELECTRICAL PANEL (JACK PUMPS ROOM)	1
25		WELDING UNIT (WORKSHOP)	2
26		ELECTRICAL PANEL (T-11) (MECHANIC STORE)	1
27		ELECTRICAL PANEL (T-36) (MECHANIC STORE)	1
28		ENGINE AIR COMPRESSOR NO.1 (ENGINE AIR COMPRESSOR ROOM)	1
29		AIR RECEIVER-SMALL (ENGINE AIR COMPRESSOR ROOM)	1
30		AIR RECEIVER-BIG (ENGINE AIR COMPRESSOR ROOM)	2
31		AIR DRYER (ENGINE AIR COMPRESSOR ROOM)	1
32		HIGH PRESSURE HVAC SYSTEM (AIR CONDITIONING ROOM)	1
33		AIR COMPRESSOR (AIR CONDITIONING ROOM)	1
34		BOILER	2
35		WORKSHOP TABLE (WORKSHOP)	1
36		ELEC. PANEL (T-39) (SHIP'S SERVICE PUMPS ROOM)	1
37		MCC ELEC. PANEL (T-32) (SHIP'S SERVICE PUMPS ROOM)	1
38		ELEC. PANEL (T0A) (SHIP'S SERVICE PUMPS ROOM)	1
39		ELEC. PANEL (L14) (SHIP'S SERVICE PUMPS ROOM)	1
40		ELEC. PANEL (T1A) (SHIP'S SERVICE PUMPS ROOM)	1
41		WATER DISTILLATORS UNIT (WATER DISTILLATORS ROOM)	2
42		BACK WASH FILTER (WATER DISTILLATORS ROOM)	1
43		FUEL OIL TRANSFER PUMP (SHIP'S SERVICE PUMPS)	2
44		ELECTRICAL PANEL (T-18) (WATER DISTILLATORS ROOM)	1
45		FUEL OIL TANK (ENGINE ROOM)	1
46		DIESEL DAY TANK (ENGINE ROOM)	1
47		BILGE BALLAST PISTON PUMPS (ENGINE ROOM)	2
48		SEA WATER COOLING PUMPS (ENGINE ROOM)	4
49		BILGE SEPARATOR (ENGINE/GENERATOR ROOM)	1
50		MCC CONTROL PANEL (ENGINE ROOM)	2
51		ELECTRICAL PANEL (T.S.M.) (ENGINE ROOM)	1
52		ELECTRICAL PANEL (T-01) (ENGINE ROOM)	1
53		ELEC. PANEL (T-10) (ENGINE/GENERATOR ROOM)	1
54		ELEC. PANEL (T-13) (ENGINE/GENERATOR ROOM)	1
55		ELEC. PANEL (ENGINE/GENERATOR ROOM)	1
56		FIRE FIGHTING WATER PUMP (HIDROFORS ROOM)	1
57		PORTABLE WATER PUMP (HIDROFORS ROOM)	2
58		PORTABLE WATER HIDROFORS (HIDROFORS ROOM)	1
59		SANITARY WATER HEATER (HIDROFORS ROOM)	1
60		WATER HEATER CIRCULATION PUMP (HIDROFORS ROOM)	1
61		SEA WATER HIDROFORS (HIDROFORS ROOM)	1
62		SEA WATER PUMP (HIDROFORS ROOM)	2
63		SHALE SHAKERS WATER PUMP (SHIP'S SERVICE PUMPS ROOM)	1
64		COMPRESSED AIR TANK (COMPRESSOR ROOM)	1
65		ELEC. PANEL (STORAGE HEAVY PART MUD PUMP)	1
66		FILTER (JACKING SYSTEM ROOM)	2
67		PUMP (JACKING SYSTEM ROOM)	1
68		HEAT EXCHANGER (JACK PUMP ROOM)	2
69		AGITATOR (MUD PIT ROOM)	8
70		AIR FOAM SYSTEM (ENGINE ROOM)	2
71		BILGE PUMP (ENGINE ROOM)	1
72		UV LAMP (HIDROFORS ROOM)	2
73		ELECTRICAL PANEL (ENGINE ROOM)	3
74		FUEL SEPARATOR (ENGINE ROOM)	1
75		TRANSFORMER (ENGINE ROOM)	2
76		ELECTRICAL PANEL (ENGINE ROOM)	2
77		HOPPER (MUD PIT ROOM)	1
78		ELECTRICAL CONTROL PANEL (AIR CONDITIONING ROOM)	1
79		TRANSFORMER (SHIP'S SERVICE PUMPS ROOM)	1
80		FIRE PUMP (SHIP'S SERVICE PUMPS ROOM)	1
81		FUEL OIL TRANSFER PUMP (ENGINE ROOM)	2
82		BULK MUD AIR COMPRESSOR (BULK MUD STORAGE ROOM)	1

REFERENCE DRAWINGS	
TITLE	DRAWING NO.
GENERAL ARRANGEMENT, MAIN DECK LAYOUT	06-109-GA-001
GENERAL ARRANGEMENT, SECTIONAL ELEVATION	06-109-GA-003
GENERAL ARRANGEMENT, RIG PLAN @ DRILL POSITION	06-109-GA-004

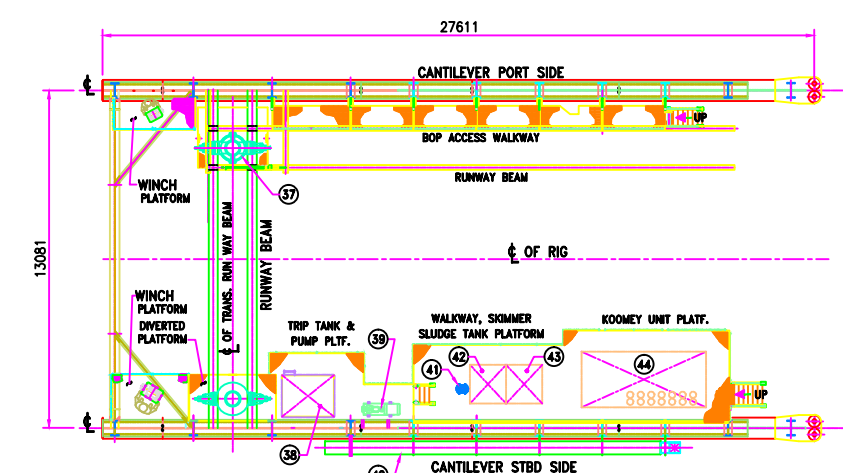
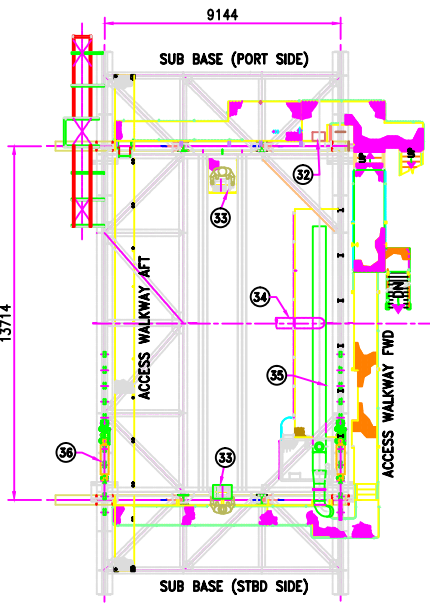
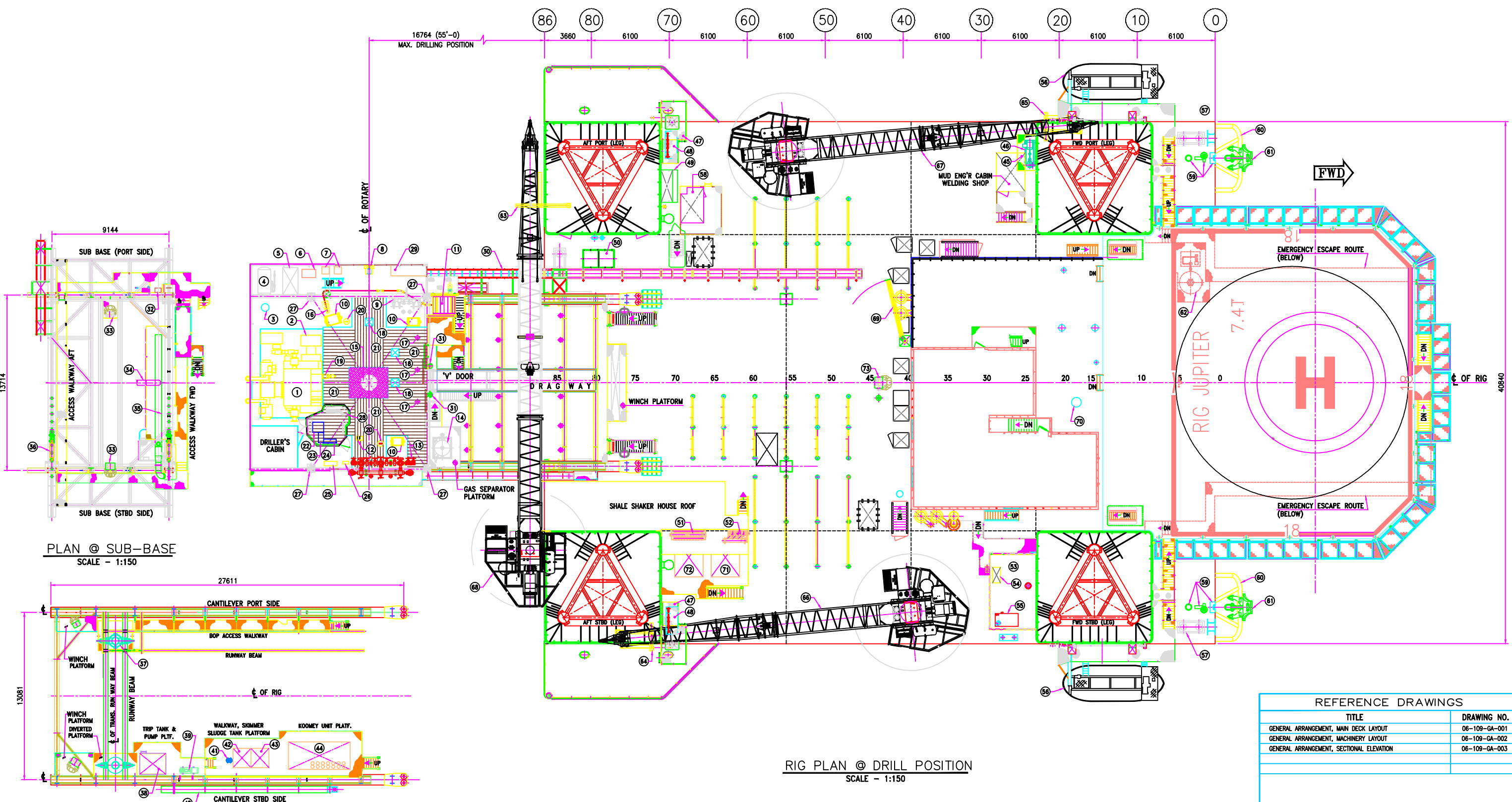
REV	DATE	DESCRIPTION	BY	CHKD.	APPD.
A	10.09.2006	ISSUED FOR APPROVAL	ADP	SCAC	LDV

CLIENT: Grup Servicii Petroliere
 TITLE: RIG JUPITER
 GENERAL ARRANGEMENT
 MACHINERY DECK LAYOUT

Lamprell Energy Ltd.
 C/o P. O. BOX 5427
 Dubai U.A.E.
 Tel: 06-5282323; Fax: 06-5284325

COST CODE	SCALE	DRAWING NUMBER	REV.
4001	1:100	06-109-GA-002	A

EQUIPMENT LIST				EQUIPMENT LIST			
ITEM	TAG No.	DESCRIPTION	QTY	ITEM	TAG No.	DESCRIPTION	QTY
83		SEWAGE UNIT (BULK MUD STORAGE ROOM)	1	90		BRAKE COOLING PUMP (DRAW WORKS COOLING ROOM)	2
84		AIR DRYER (WATER DISTILLATORS ROOM)	1	91		COOLING UNIT (DRAW WORKS COOLING ROOM)	3
85		AIR BOTTLE (WATER DISTILLATORS ROOM)	1	92		ELECTRICAL PANEL (HIDROFORS ROOM)	1
86		DRILLING MACHINE (WORKSHOP)	1	93		ELECTRICAL PANEL (HIDROFORS ROOM)	2
87		LATHE MACHINE (WORKSHOP)	1	94		ENGINE AIR COMPRESSOR NO.2 (WATER DISTILLATORS ROOM)	1
88		GRINDING MACHINE (WORKSHOP)	2	95		SCR PANEL (SCR ROOM)	17
89		DRAW WORK COOLING PUMP (DRAW WORKS COOLING ROOM)	2	96		300V MAIN SWITCH BOARD (SCR ROOM)	7



RIG PLAN @ DRILL POSITION
SCALE - 1:150

REFERENCE DRAWINGS	
TITLE	DRAWING NO.
GENERAL ARRANGEMENT, MAIN DECK LAYOUT	06-109-GA-001
GENERAL ARRANGEMENT, MACHINERY LAYOUT	06-109-GA-002
GENERAL ARRANGEMENT, SECTIONAL ELEVATION	06-109-GA-003

EQUIPMENT LIST			
ITEM	TAG No.	DESCRIPTION	
1		DRAWWORKS	
2		EDS	
3		AIR BOTTLE FOR EDS	
4		AIR DRILLING BOTTLE	
5		HPU FOR TRAVERSE SKIDDING	
6		HYDRAULIC PUMP	
7		NORMAL & EMERGENCY LIGHTNING PANEL	
8		ROTARY EXHAUST VENT	
9		STAND PIPE MANIFOLD	
10		RAM WINCH & HOIST (SWL 5T)	
11		DRILL LINE SPOOL	
12		MAN RIDING WINCH & HOIST	
13		CHOKE & KILL MANIFOLD	
14		MUD GAS SEPARATOR	
15		ROTARY TABLE	
16		DEADLINE ANCHOR	
17		MOUSE HOLE	
18		INSPECTION HATCH	
19		HYDRAULIC CYLINDER	
20		STABBING POST	
21		WOODEN PIPE SET BACK AREA	
22		DRAW WORK CONSOLE	
23		DRILLERS CONSOLE	
24		DRILLERS CONTROL CONSOLE	
25		KOOMEY REMOTE CONTROL PANEL	
26		SWACO SUPER CHOKE REMOTE CONTROL PANEL	
27		DERRICK PEDESTAL	
28		RELEASE CONSOLE PANEL	
29		WORKING BENCH	
30		RIGID CABLE LADDER	
31		SAMSON POST	
32		CONTROL PANEL	
33		NEW 5 TON AIR WINCH	
34		16" FLOW LINE	
35		TRANS. MUD DITCH	
36		DRILL FLOOR SKIDDING SYSTEM	
37		BOP	
38		TRIP TANK	
39		TRIP TANK PUMP	
40		LONG. MUD DITCH	
41		3" WILDEN PUMP	
42		SKIMMER TANK (22 BARRELS)	
43		SLUDGE TANK (22 BARRELS)	
44		KOOMEY UNIT	
45		DELUGE PUMP FOUNDATION PLATFORM	
46		6"x6" DELUGE PUMP	
47		BURNER BOOM PLATFORM & KING POST	
48		FLARE STAGING SKID	
49		DIESEL TANK	
50		CANTILEVER SKIDDING HPU	
51		DESILTER	
52		DESANDER	
53		GENERATOR SET ROOM	
54		BATTERY CHARGER	
55		NEW DIESEL FUEL DAY TANK	
56		LIFE BOAT (50 PERSON CAP.)	
57		BOLLARD	
58		TOP DRIVE CABIN ELECTRICAL BOARD CONTROL	
59		FAIR LEADER ASSEMBLY (FWD)	
60		ANCHOR RACK	
61		ANCHOR	
62		HELI FUEL TANK	
63		CRANE BOOM REST (AFT-PORT SIDE)	
64		CRANE BOOM REST (AFT-STBD SIDE)	
65		CRANE BOOM REST (FWD-PORT SIDE)	
66		CRANE (STBD SIDE)	
67		CRANE (PORT SIDE)	
68		CRANE (AFT-STBD SIDE)	
69		DAVIT	
70		ANTENNA (RADIO CONTROL)	
71		CENTRIFUGE 142DM	
72		CENTRIFUGE 152DM	
73		NEW 5 TON AIR WINCH	

REV	DATE	DESCRIPTION	BY	CHKD.	APPD.
A	10.09.2006	ISSUED FOR APPROVAL	ADP	SCAC	LDV

CLIENT: Group Servicii Petroliere

TITLE: RIG JUPITER
GENERAL ARRANGEMENT
RIG PLAN @ DRILL POSITION

Lamprell Energy Ltd.
C/o P. O. BOX 5427
Dubai U.A.E.
Tel: 06-5282323; Fax: 06-5284325

COST CODE	SCALE	DRAWING NUMBER	REV.
4001	NOTED	06-109-GA-004	A

