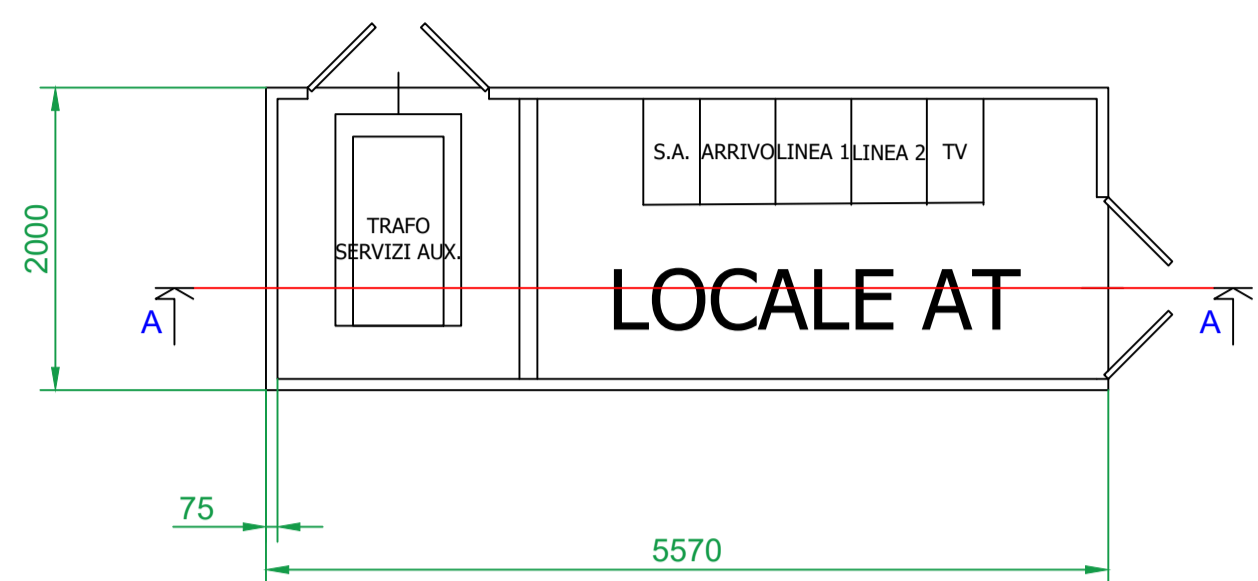
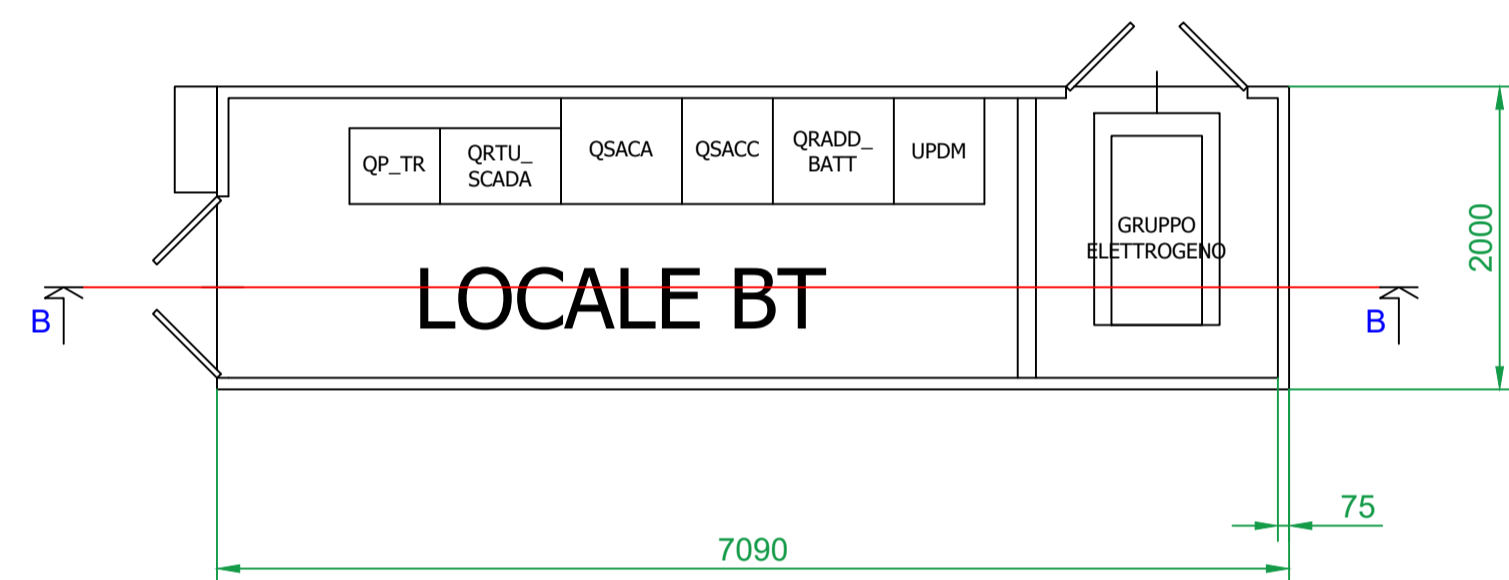


LOCALE 36KV - PIANTA QUOTATA



SCALA 1:50

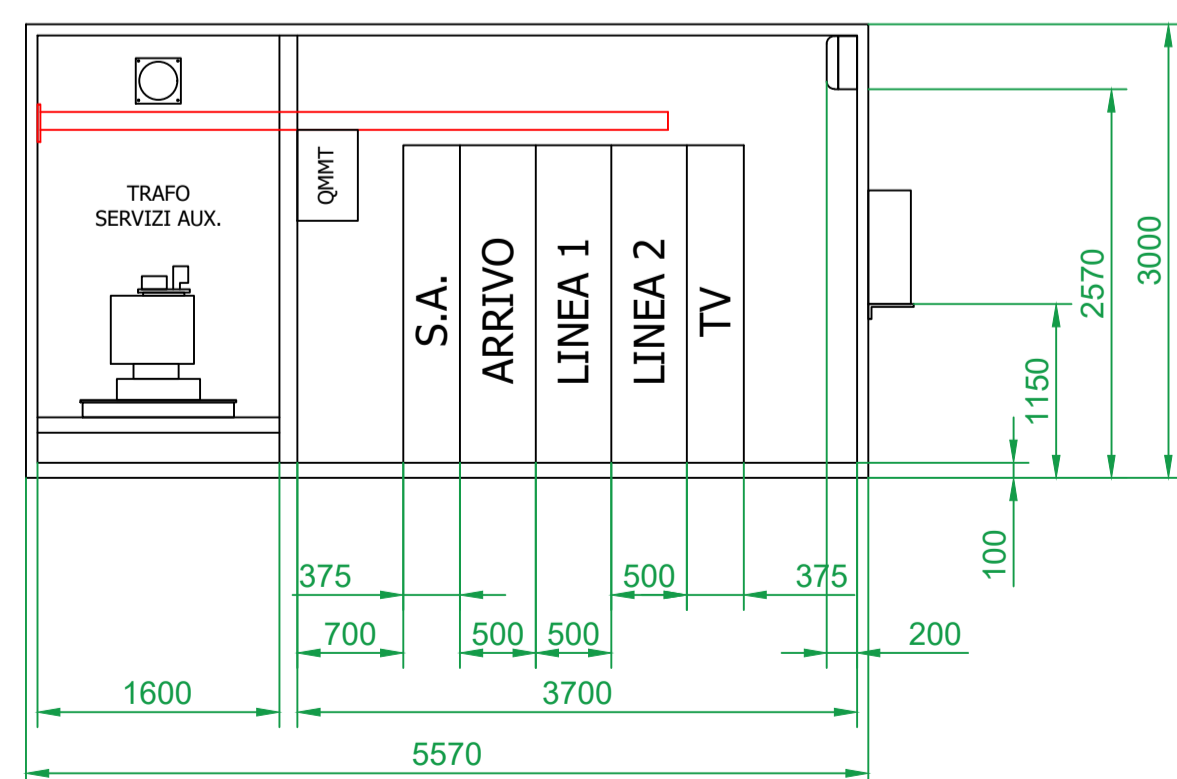
LOCALE BT - PIANTA QUOTATA



SCALA 1:50

LOCALE 36KV - SEZIONE A - A

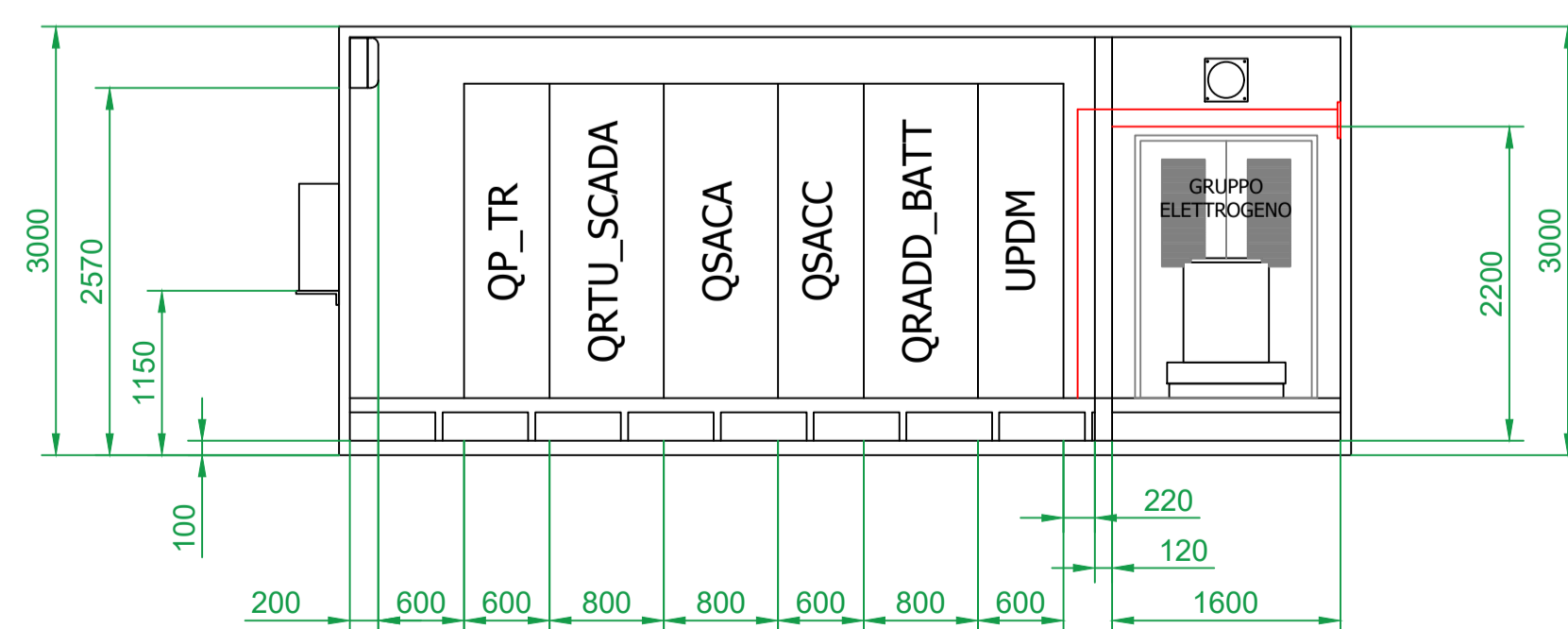
LOCALE AT



SCALA 1:50

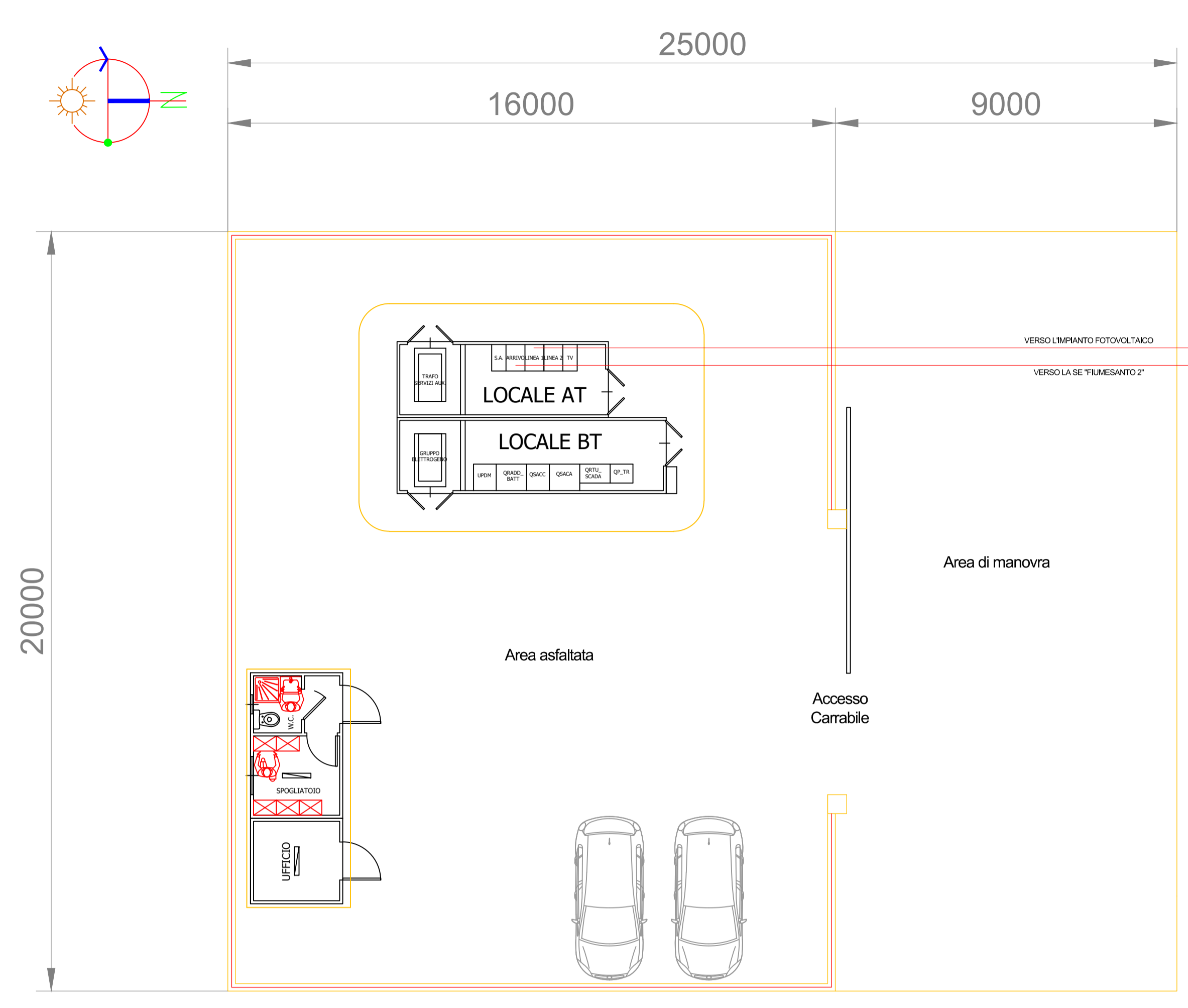
LOCALE BT - SEZIONE B - B

LOCALE BT

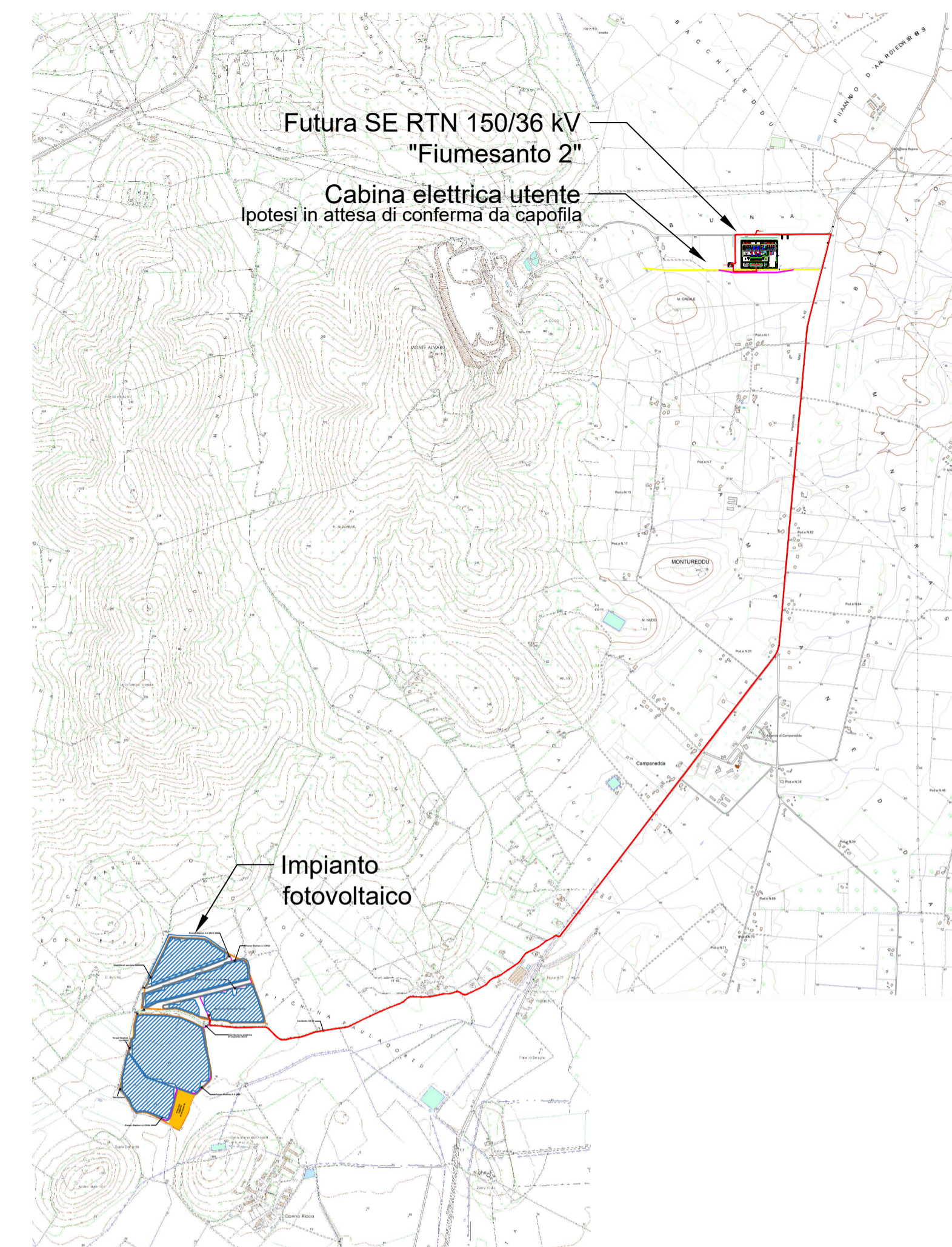


SCALA 1:50

PLANIMETRIA



SCALA 1:100



Regione: Sardegna
 Provincia: Sassari
 Comune: Sassari
 Localita': La Corte - Campanedda

Realizzazione di impianto agrivoltaico da 32,07 MWp
 Progetto Definitivo

Titolo: Sezione degli impianti utente e di RTN

CODICE ELABORATO GRAFICO

IT/FTV/ F-CORTE/ PDF/E/ PAR/003 - a

Visti / Timbri:



Note:

REVISIONI				
Data	Rev.	Descrizione revisioni	Elaborato:	Approvato:
05/02/2024	a	Emissione	F. Bruno	L. Mura

asja | Nurra
 ASJA Nurra
 I - 10123 - Torino (TO) Corso Vittorio Emanuele II, 6
 T +39 011 95 79 211
 F +39 011 95 79 245
 asja.nurra@pec.it