





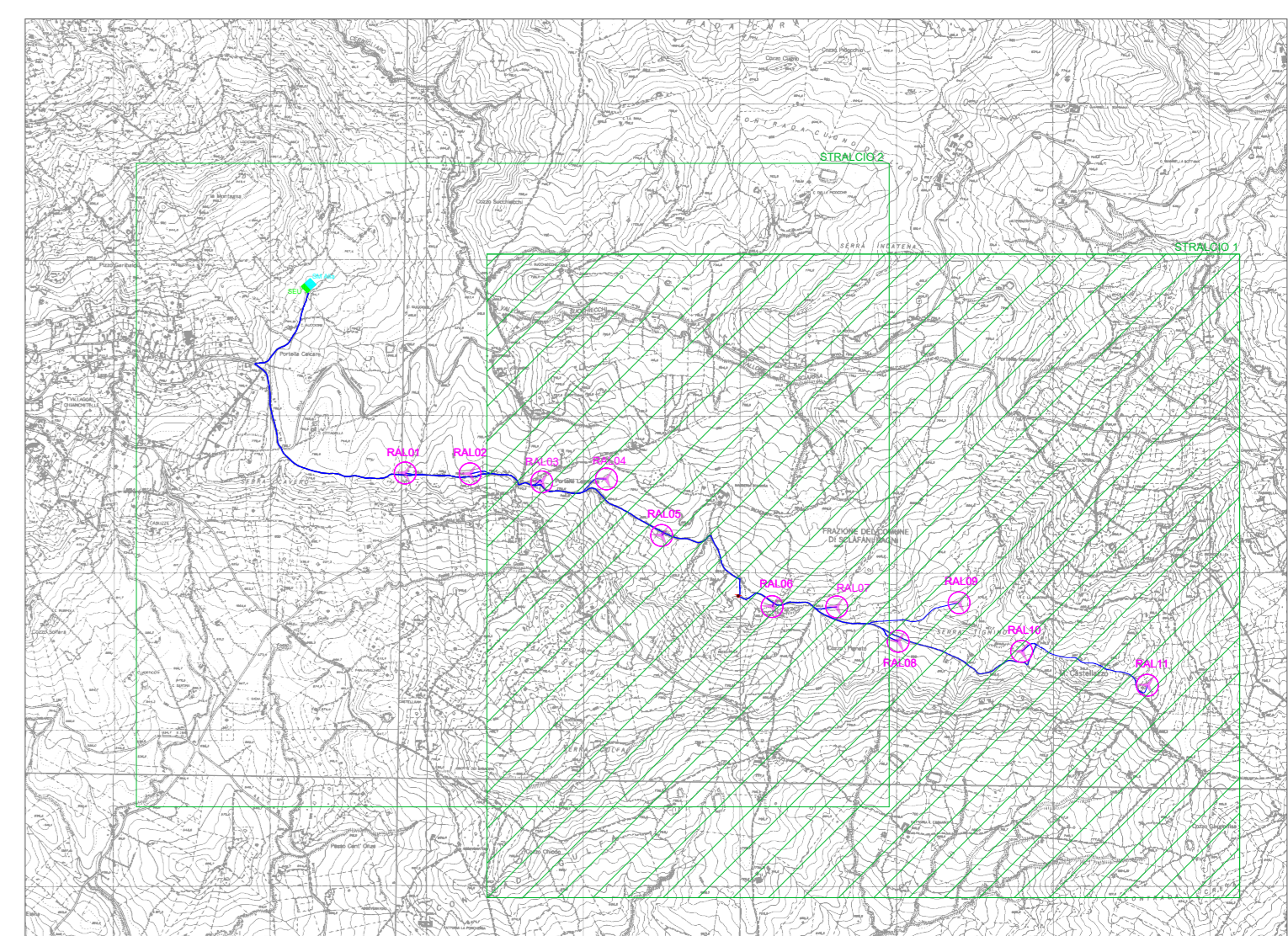


LEGENDA

-  Aerogeneratori
-  Torre anemometrica
-  Cavidotto MT
-  Sottostazione Elettrica Utente (SEU)
-  SM Alia
-  Confini comunali




Regione: Sicilia
 Provincia: Palermo
 Comune: Alia, Sclafani Bagni, Valledolmo
 Localita': Serra Tignino - Serra Caverò
Rifacimento dell'esistente impianto eolico di "Alia Sclafani"
 Progetto Definitivo
 Titolo: Planimetria cavidotti su C.T.R. (stralcio 1 di 2)
 CODICE ELABORATO GRAFICO

IT / EOL / E-REAL / PDF / E / PLN / 017.1 - a

Visti / Timbri:

Note:

REVISIONI				
Data	Rev.	Descrizione revisione	Elaborato:	Approvato:
06/07/2024	1	EMISSORE	F. Russo	A. Sclafani



 ASJA AMBIENTE ITALIA S.p.A.
 Sede legale:
 01121 - Terni (TR) Corso Viteglio, 24
 Sede operativa:
 00188 - Roma (RM) Via Salaria, 70
 T +39 011 99 79 211
 PEC: asja@asjaenergy.it
 www.asjaenergy.it