


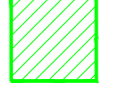


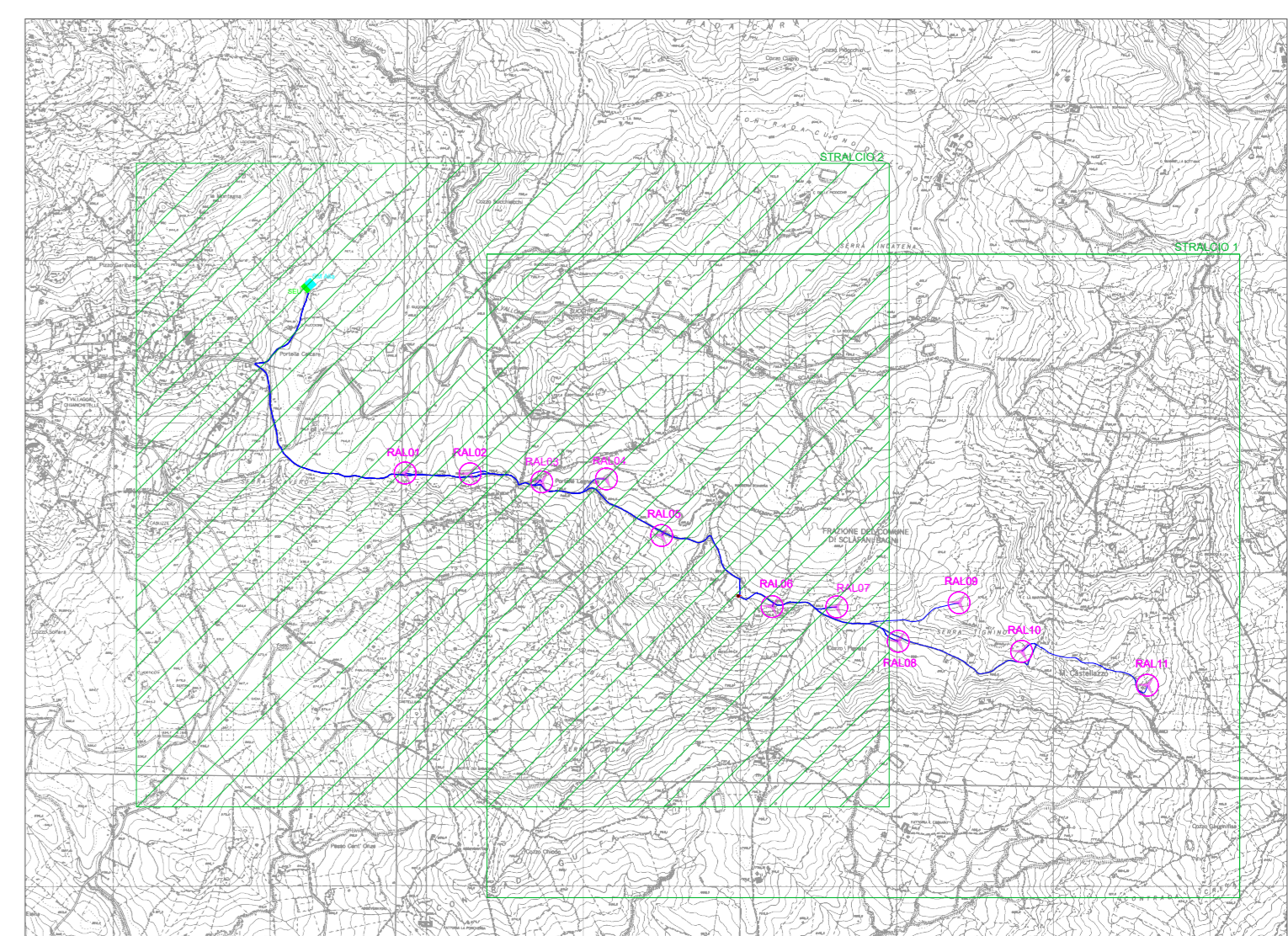


**LEGENDA**

-  Aerogeneratori
-  Torre anemometrica
-  Cavidotto MT
-  Sottostazione Elettrica Utente (SEU)
-  SM Alia
-  Confini comunali




Regione: Sicilia  
 Provincia: Palermo  
 Comune: Alia, Sclafani Bagni, Valledolmo  
 Località: Serra Tignino - Serra Cavoro  
**Rifacimento dell'esistente impianto eolico di "Alia Sclafani"**  
 Progetto Definitivo  
 Titolo: Planimetria cavidotti su C.T.R. (stralcio 2 di 2)  
 CODICE ELABORATO GRAFICO

IT / EOL / E-REAL / PDF / E / PLN / 017.2 - a

Visti / Timbri:

Note:

REVISIONI				
Data	Rev.	Descrizione revisione	Elaborato	Approvato
06/07/2024	2	EMISSIONE	F. Russo	A. Sclafani


**ASJA** ARRENERE ITALIA S.p.A.  
 Sede legale: 01121 - Terni (TR) Corso Vareschi, 24  
 Sede operativa: 01018 - Rieti (RM) Via Salaria, 70  
 Tel: +39 011 95 79 211  
 PEC: asja@asjaenergy.it  
 www.asjaenergy.it