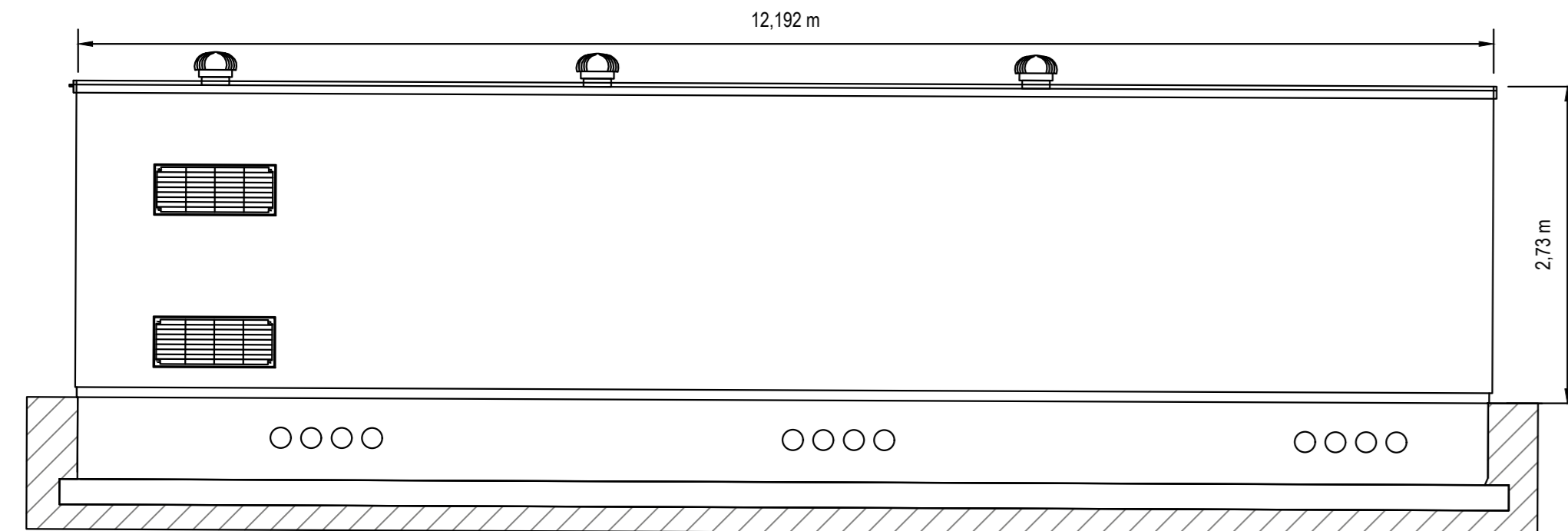
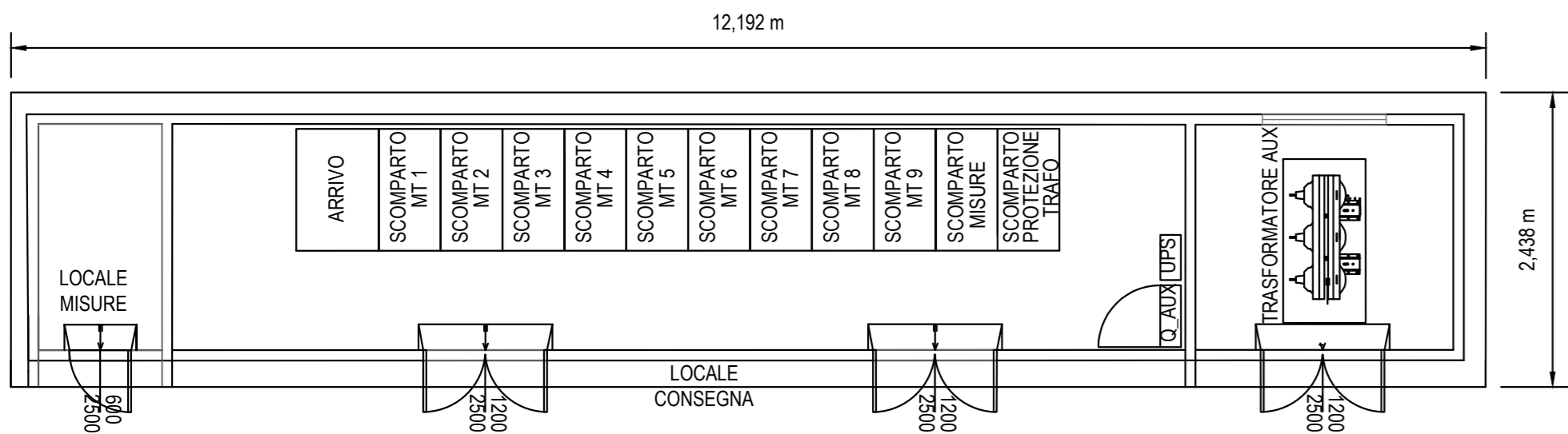


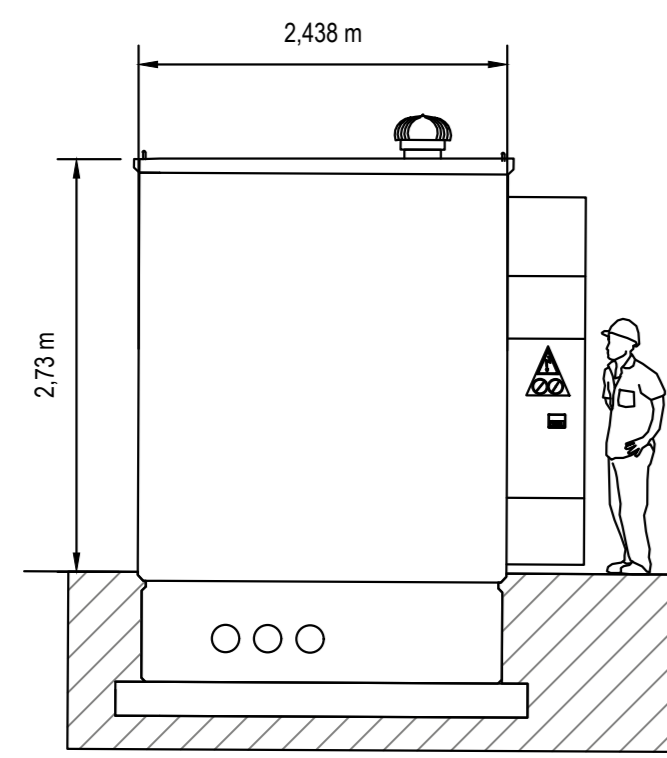
Vista frontale (scala 1:50)



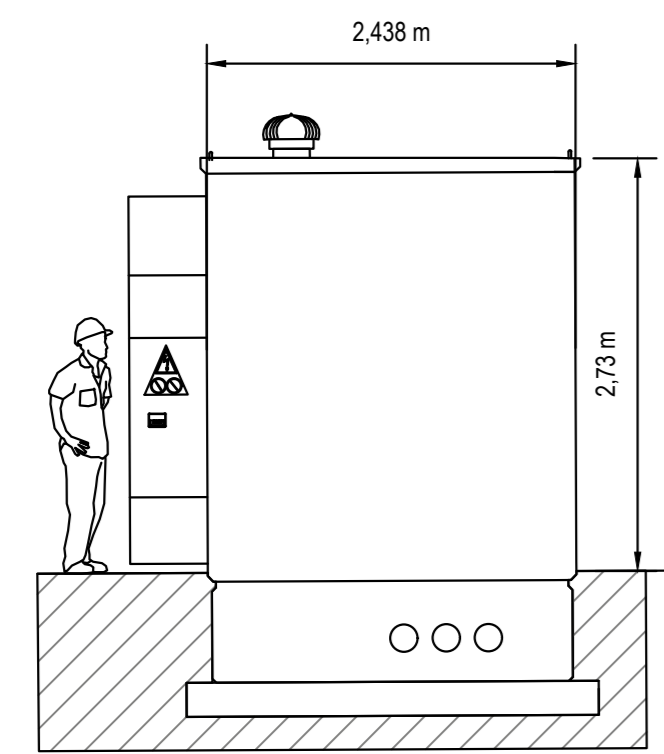
Vista posteriore (scala 1:50)



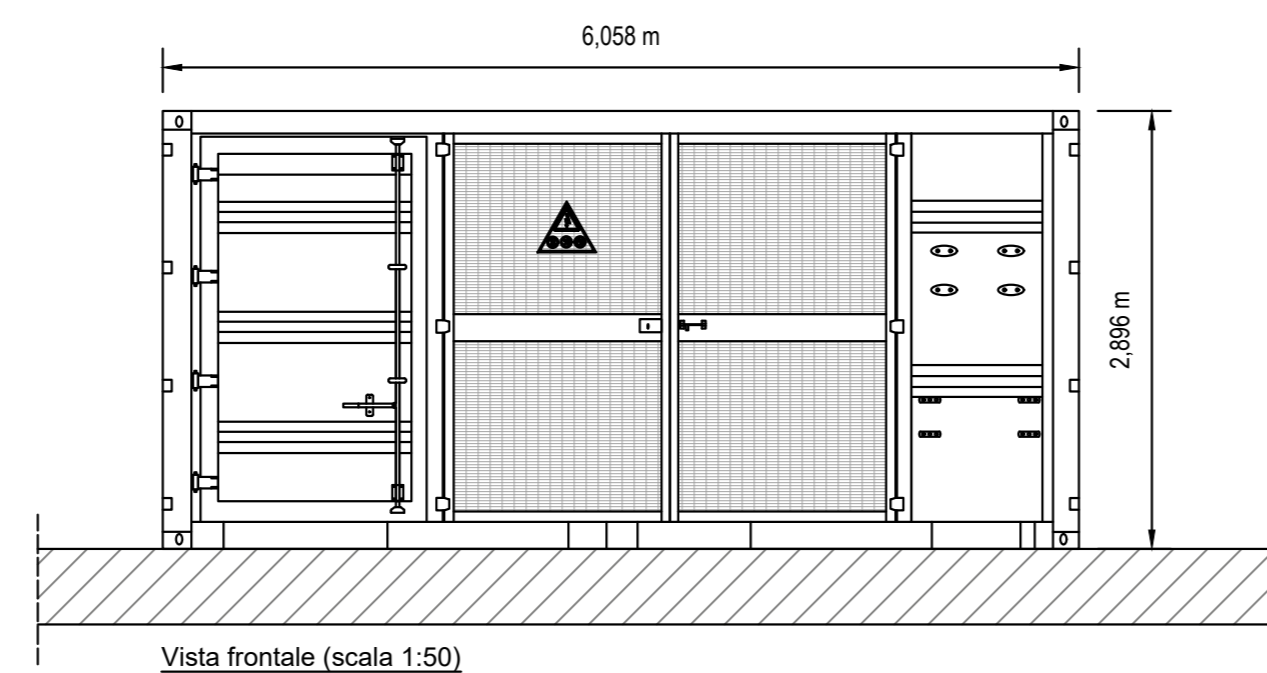
Pianta (scala 1:50)



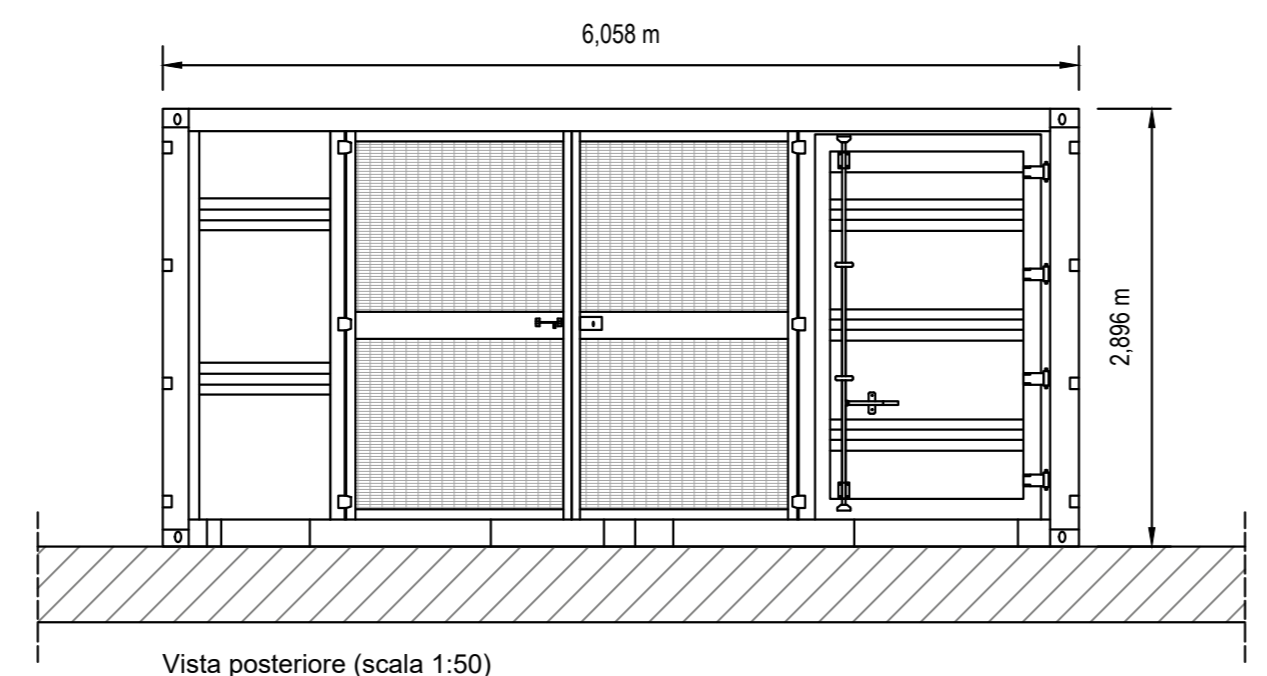
Vista laterale 1 (scala 1:50)



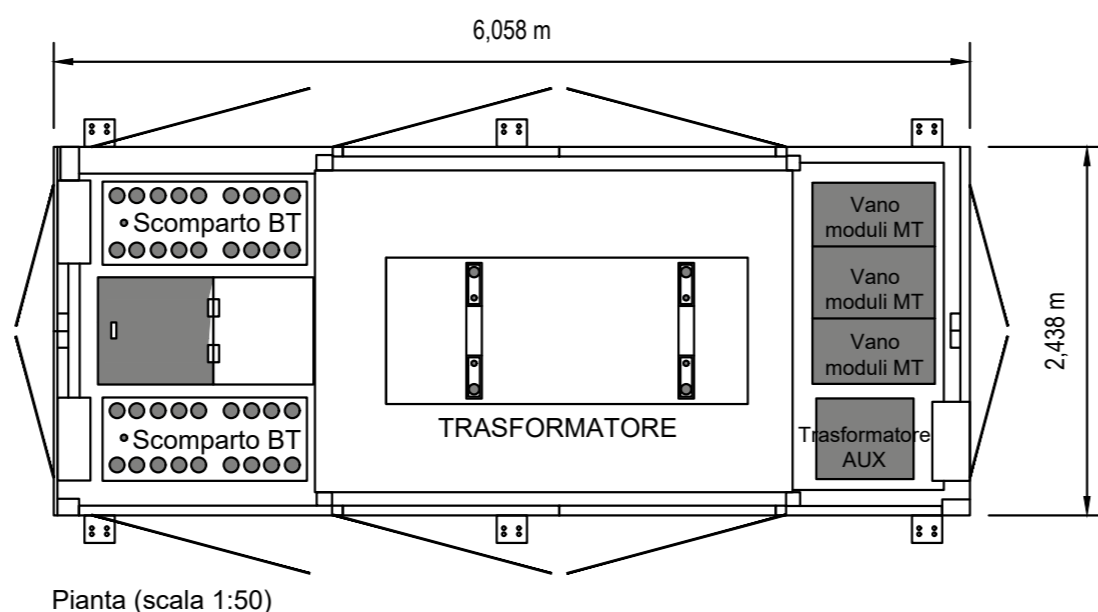
Vista laterale 2 (scala 1:50)



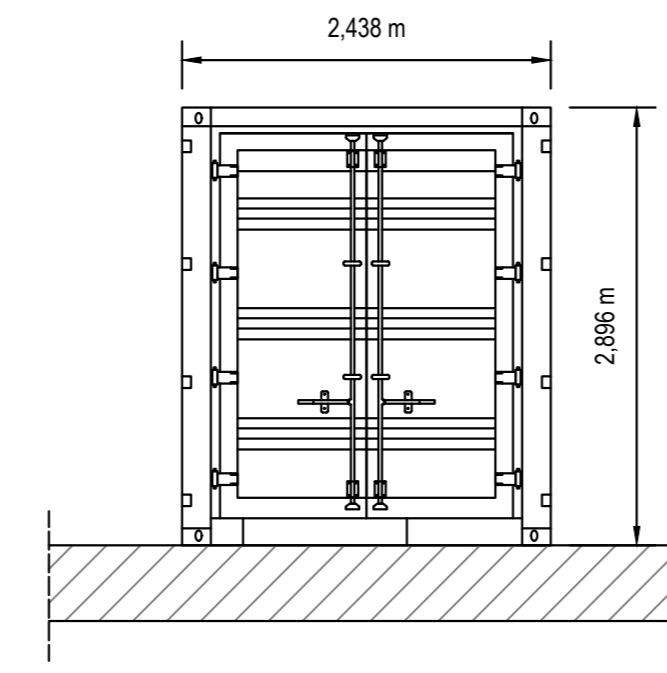
Vista frontale (scala 1:50)



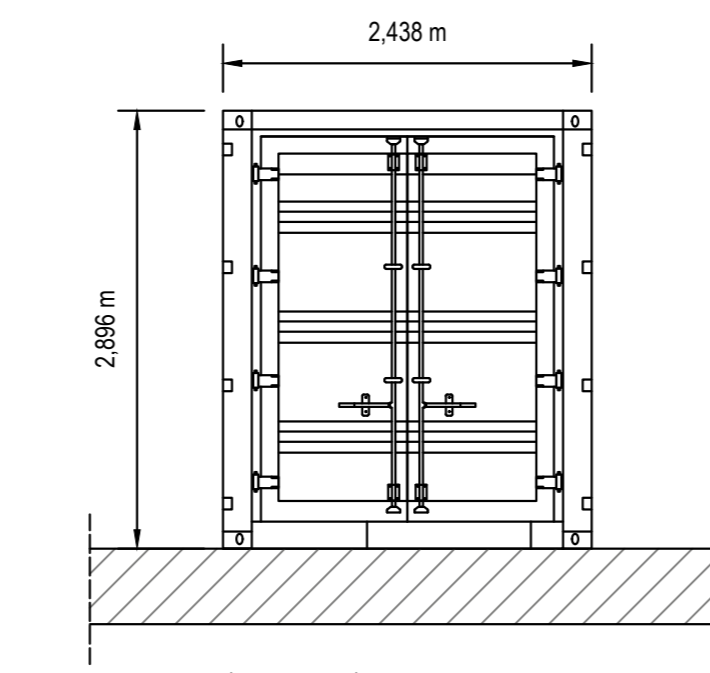
Vista posteriore (scala 1:50)



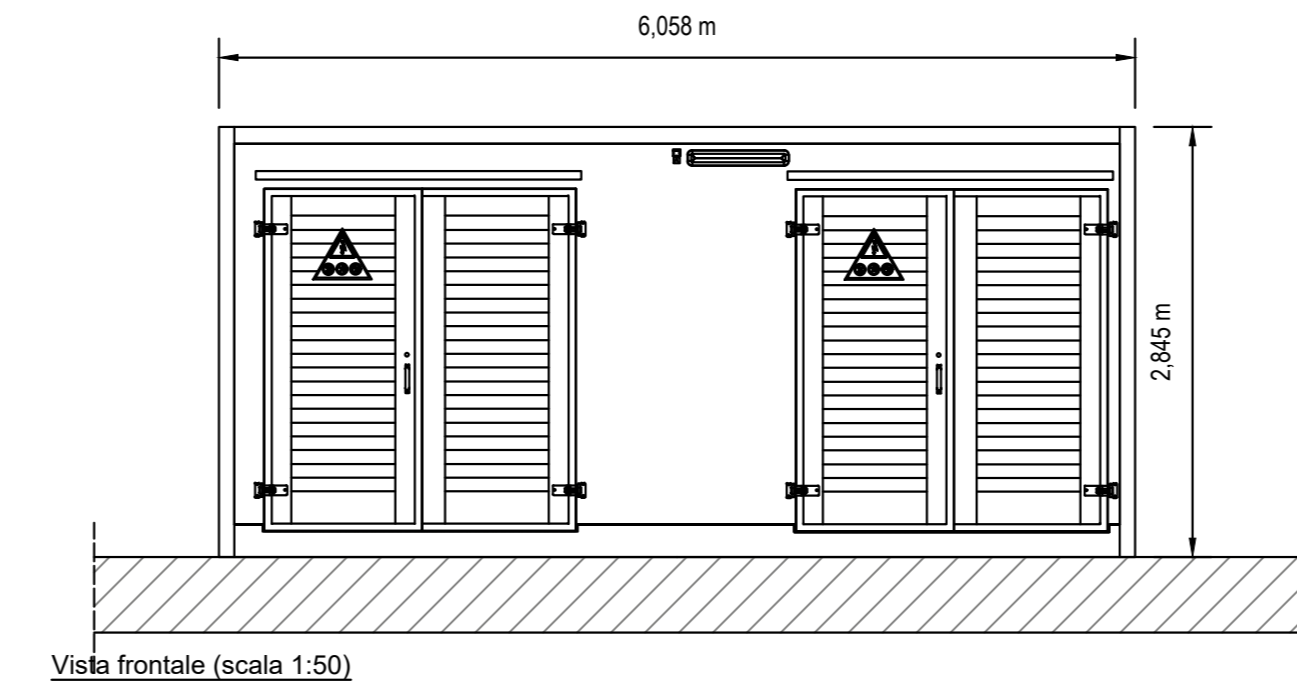
Pianta (scala 1:50)



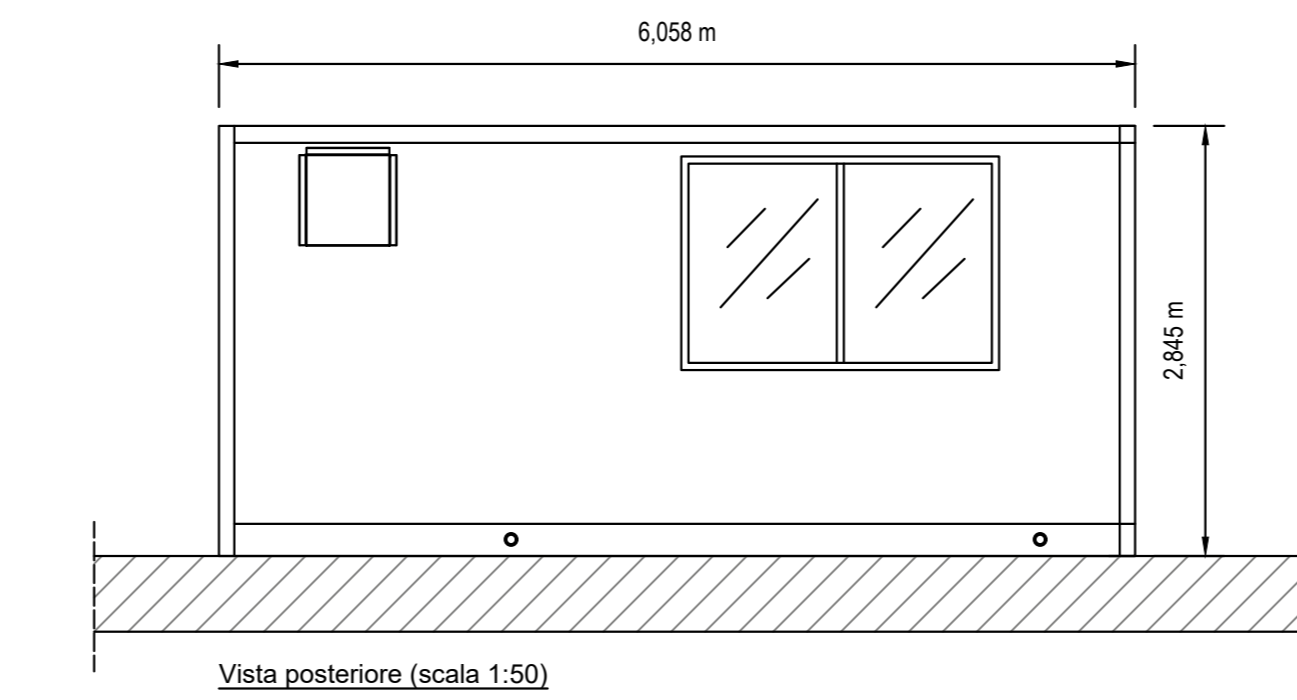
Vista laterale 1 (scala 1:50)



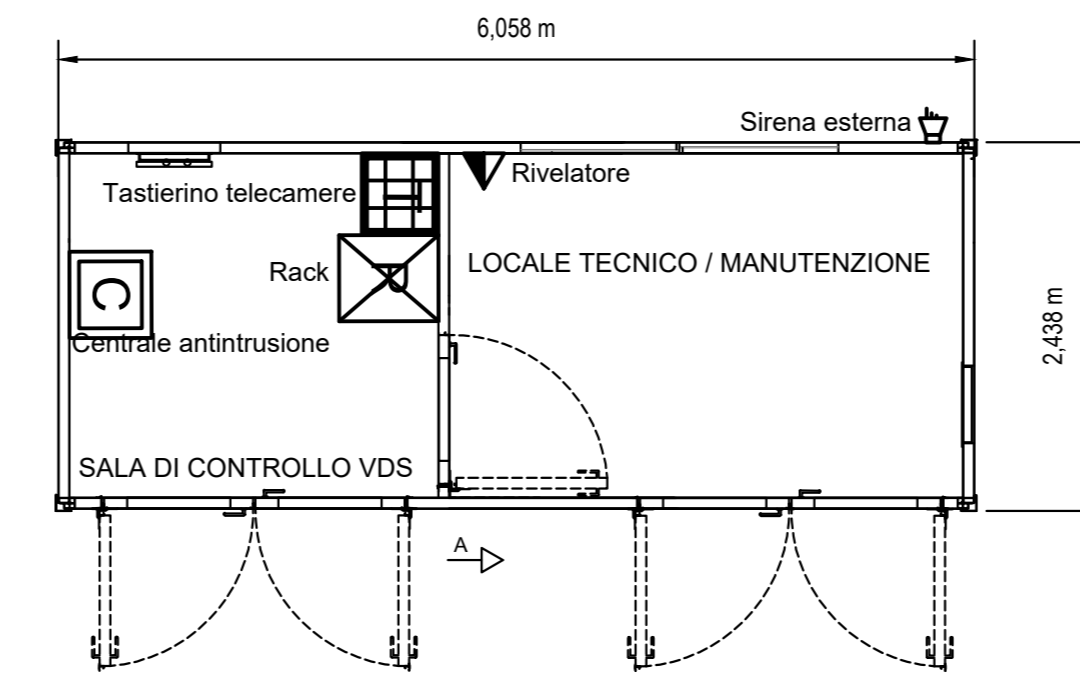
Vista laterale 2 (scala 1:50)



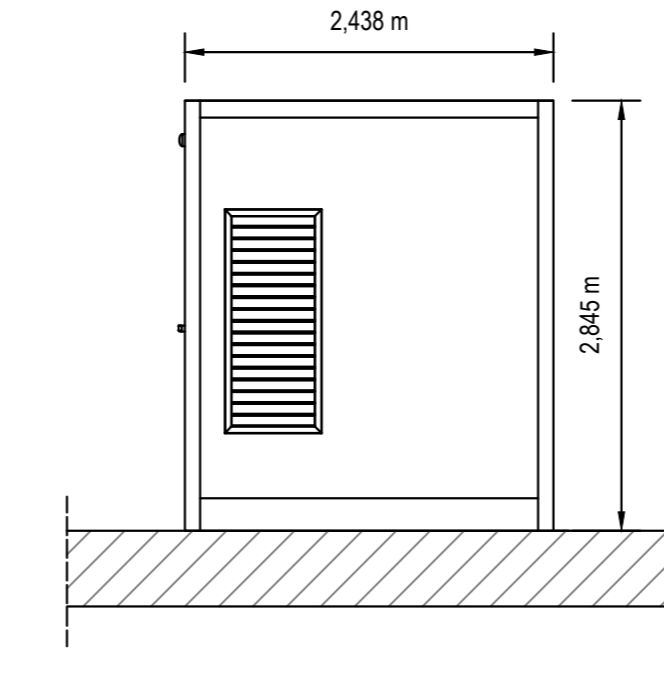
Vista frontale (scala 1:50)



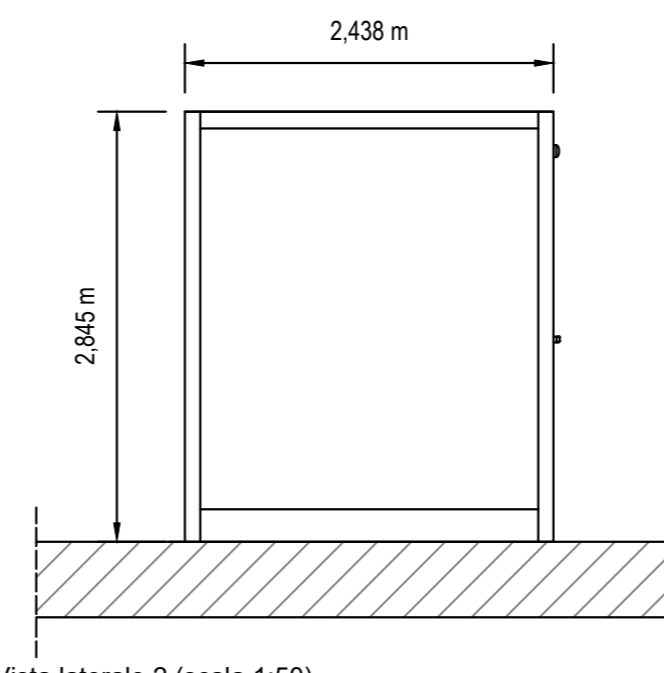
Vista posteriore (scala 1:50)



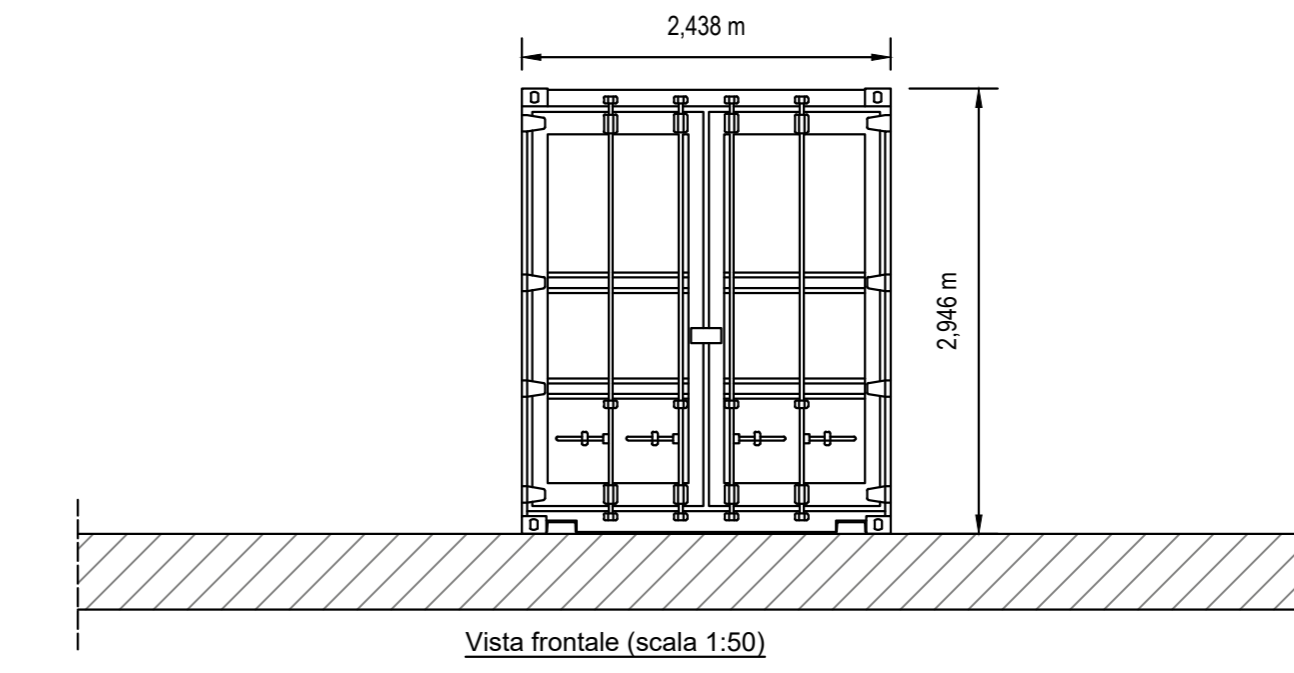
Pianta (scala 1:50)



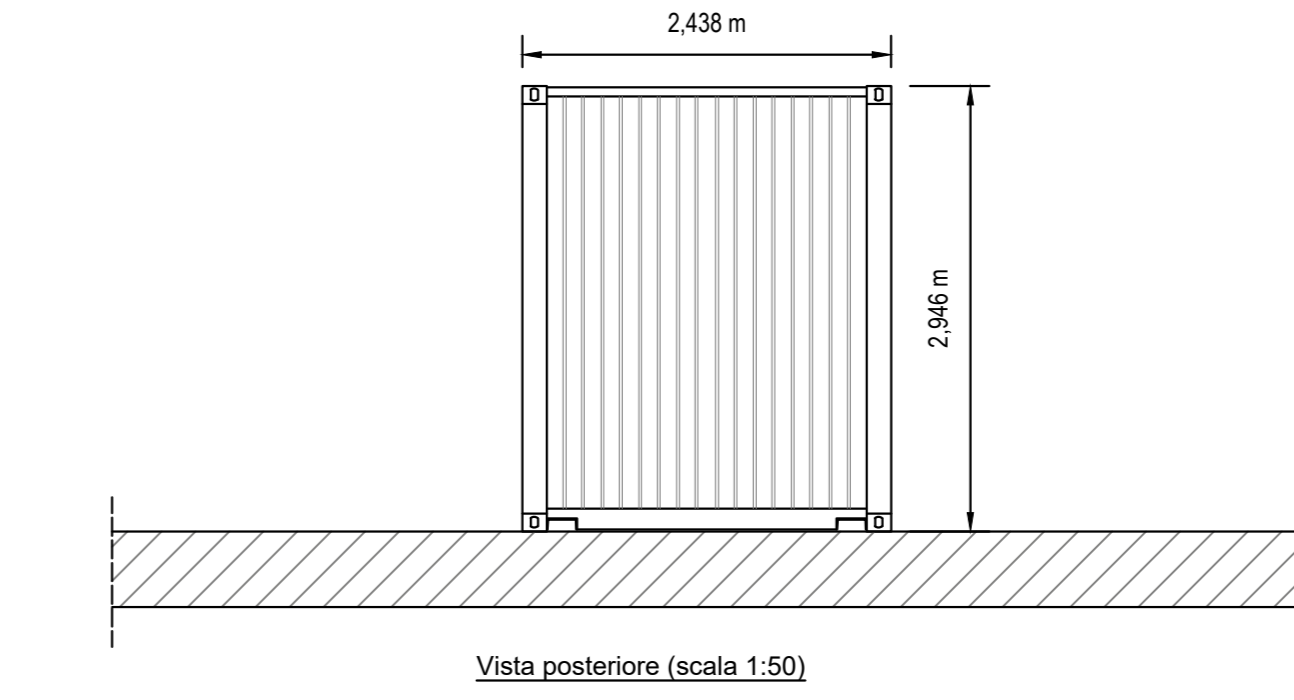
Vista laterale 1 (scala 1:50)



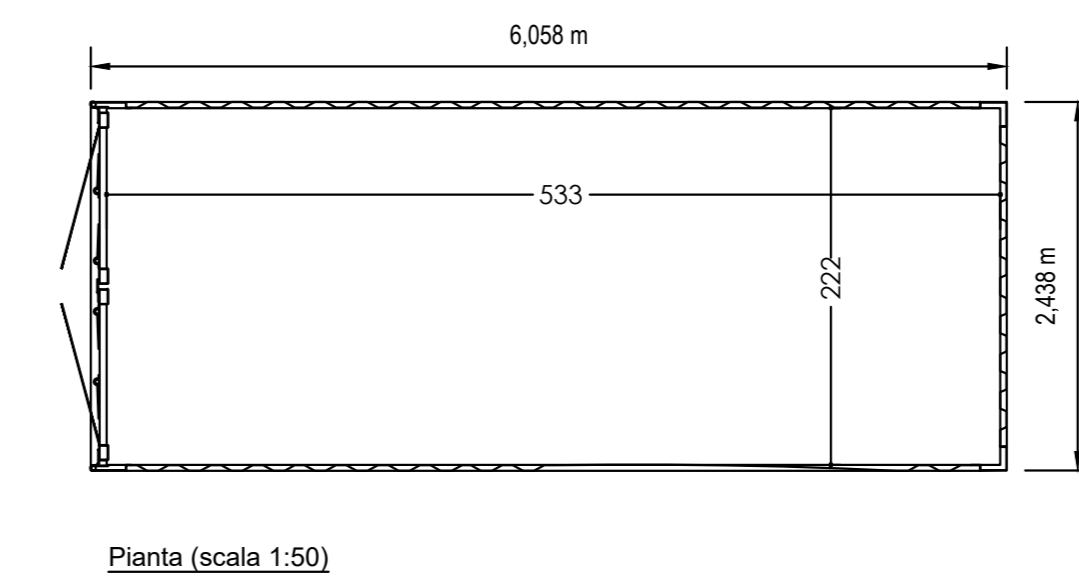
Vista laterale 2 (scala 1:50)



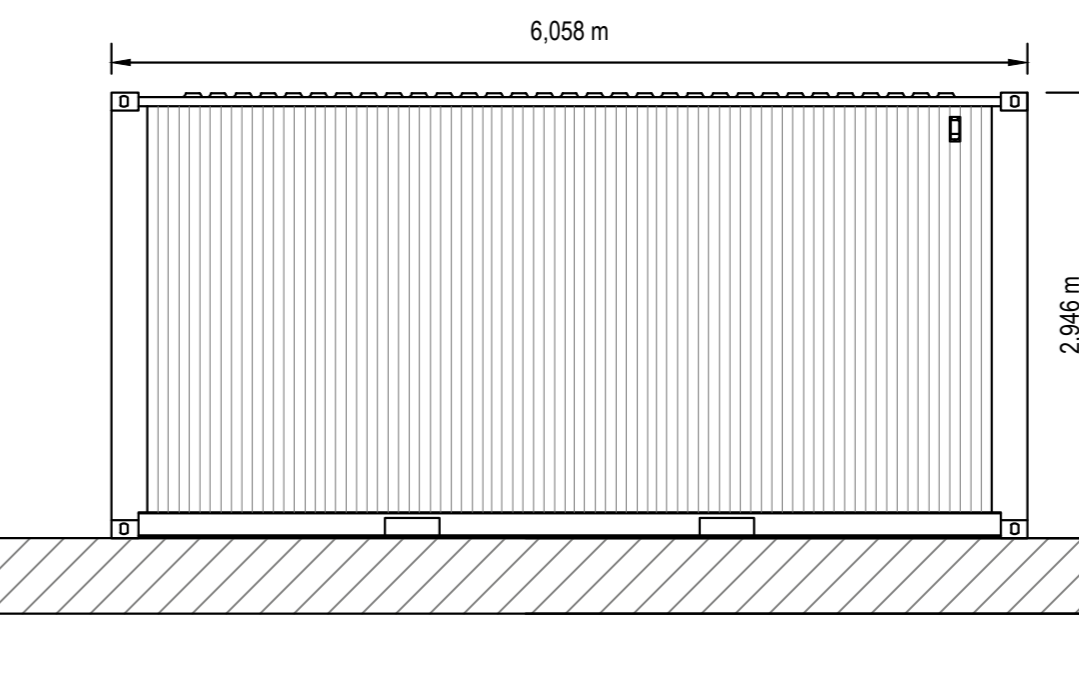
Vista frontale (scala 1:50)



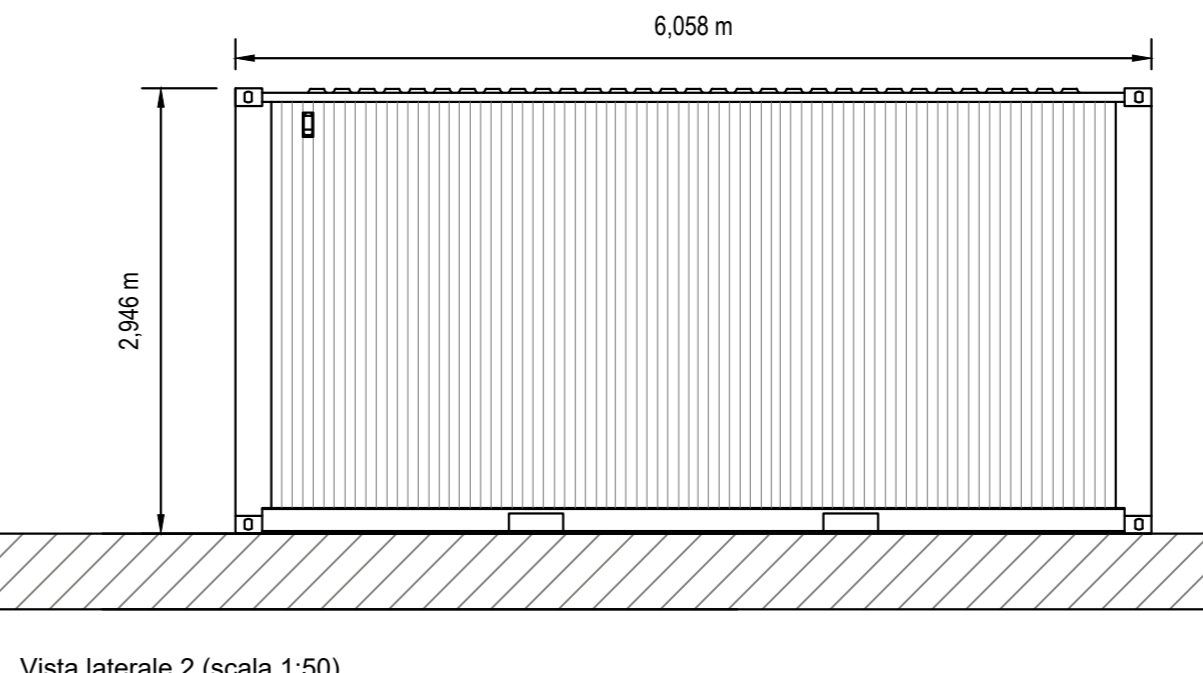
Vista posteriore (scala 1:50)



Pianta (scala 1:50)



Vista laterale 1 (scala 1:50)



Vista laterale 2 (scala 1:50)



COMUNE DI LUCERA
E FOGGIA
PROVINCIA DI FOGGIA

PROGETTO PER LA REALIZZAZIONE DI UN PARCO AGRIVOLTAICO AVANZATO
RICHIESTA DI AUTORIZZAZIONE UNICA
D.Lgs. 387/2003

PROCEDIMENTO UNICO AMBIENTALE (P.U.A.)
VALUTAZIONE DI IMPATTO AMBIENTALE (V.I.A.)
D.Lgs. 152/2006 ss.mm.ii. (Art.27)
"Norme in materia ambientale"

PROGETTO	LUCERA
DITTA	NVA I S.r.l.
Elaborato	24193-PD_G-EG_036_00
Scala	1:50
TITOLO DELL'ALLEGATO: Pianta, sezioni e particolari costruttivi locali cabine di campo	

REV	DESCRIZIONE	DATA
00	Prima Emissione	21/09/2021

CARATTERISTICHE GENERALI D'IMPIANTO
AGRIVOLTAICO AVANZATO
Panneli: 52.780
Potenza installata: 133 MW
Potenza complessiva: 32.88 MW
Componente alla risposta di generazione: 2.501 MW

Il progettista: ATR Engineering srl
P.zza Giovanni Paolo II, 8 - 71017
Ternomaggiore (FG) 0852.993197
atr@atrpg.it

Il progettista: seingim
seingim Global Services S.r.l.
Via degli Olivi, 57
36022 - Ceggia (VE)
0421.520907
info@seingim.it

Il proponente: NVA I S.r.l.
Via Lupatella, 8 - 20043 Lissone (MI)
nva.1@seingim.it

Il tecnico: Ing. Eugenio Di Gianvito
atsing@atsing.eu