



PROGETTO DEFINITIVO PARCO EOLICO "CANTORATO"

Elaborato: CA\_TOP\_T11

Scala: 1:2000

Data: 24.06.2023

**Aereogeneratore CU4**

Planimetria di progetto, profili longitudinali, sezioni stradali

COMMITTENTE:  
**ENERGIA LEVANTE S.r.l.**  
Società del Gruppo



Il progettista

Ferraro architetto Francesco

N° REVISIONE	Data revisione	Elaborato	Controllato	Approvato	NOTE
1			F.F.	C.M.	

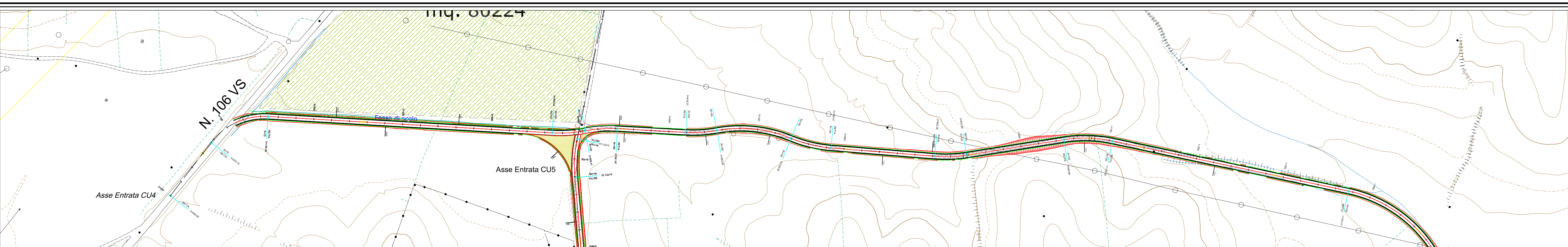
E' vietata la copia anche parziale del presente elaborato

**ENERGIA LEVANTE S.r.l.**

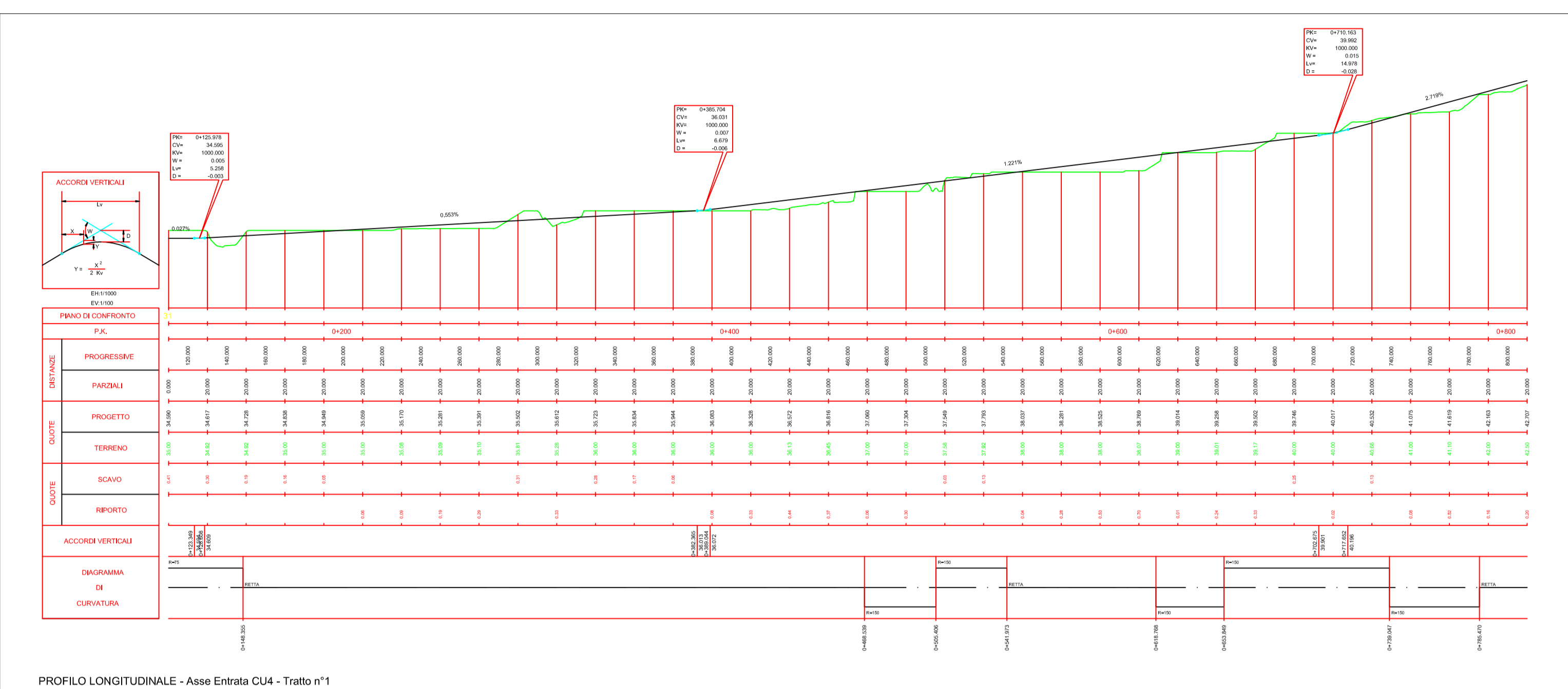
Via Luca Gurio n°9/11 - Regus Eur - 4° piano - Cap. 00143 ROMA (Italia)

P.IVA 10240591007 - REA RM1219825 - PEC: energielevante@legatmail.it

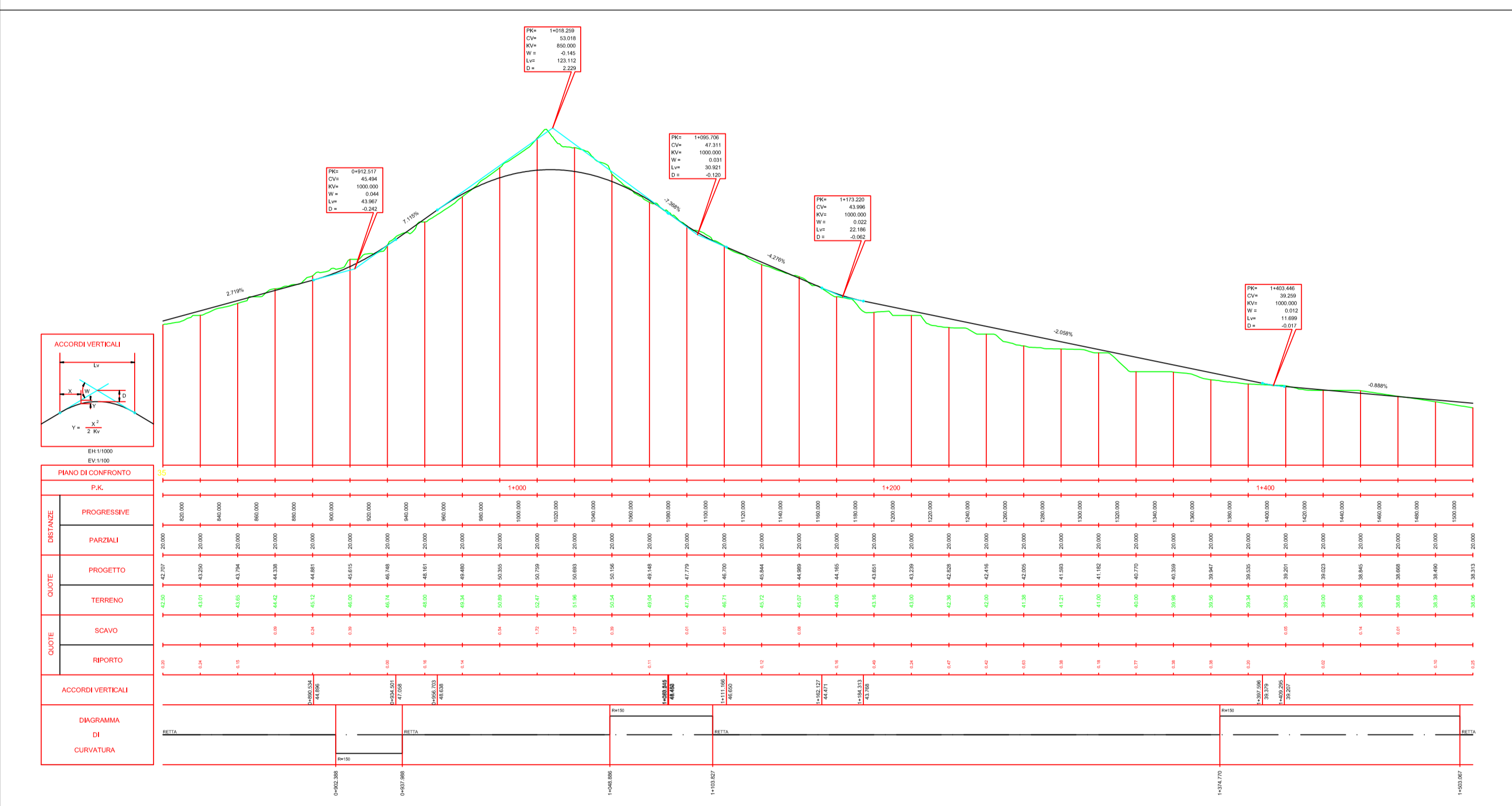
Indirizzo email: www.asserenewables.com - Telefono: (+39) 0654832107



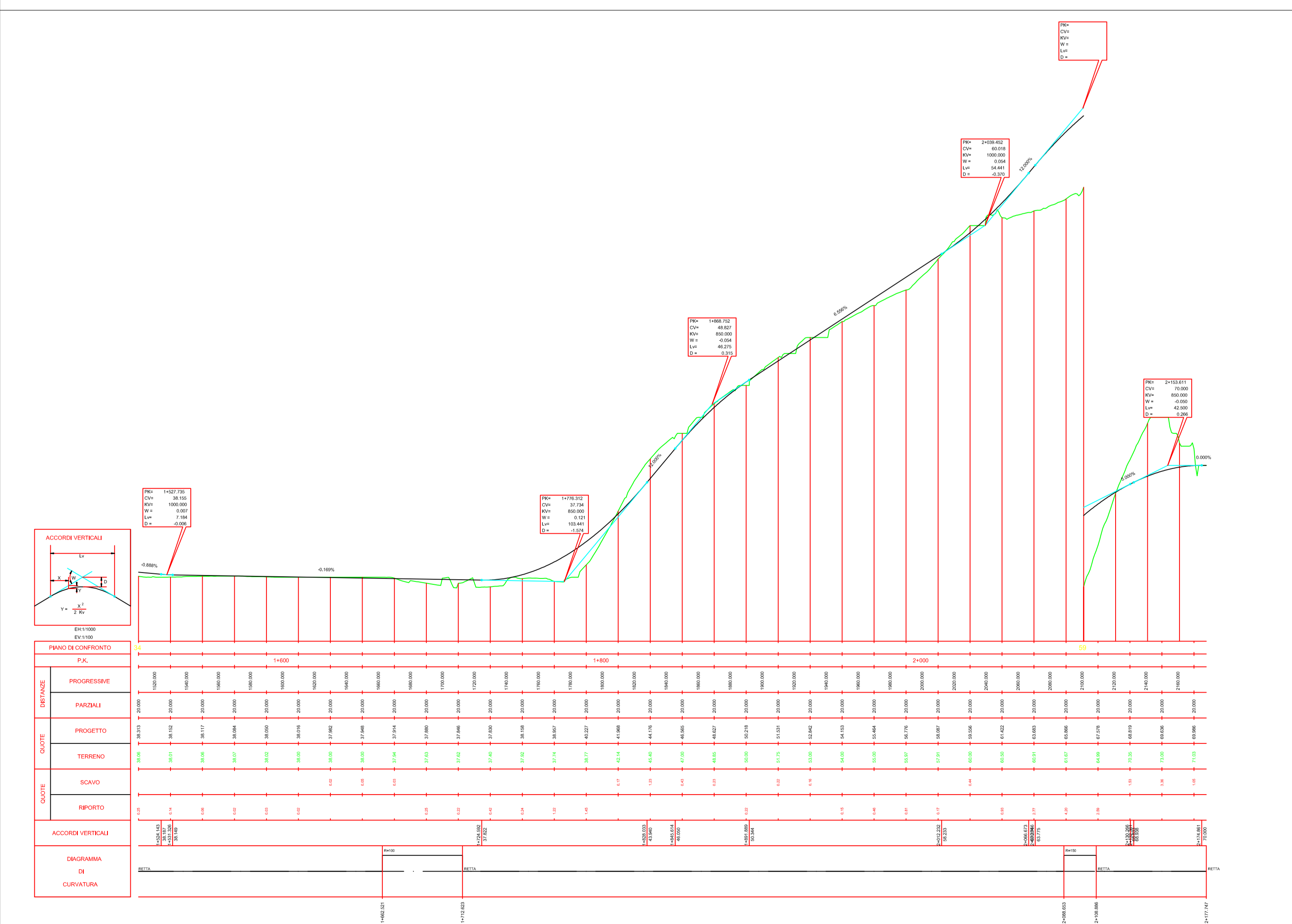
**PROFILI LONGITUDINALI**



PROFILA LONGITUDINALE - Asse Entrata CU4 - Tratto n°1

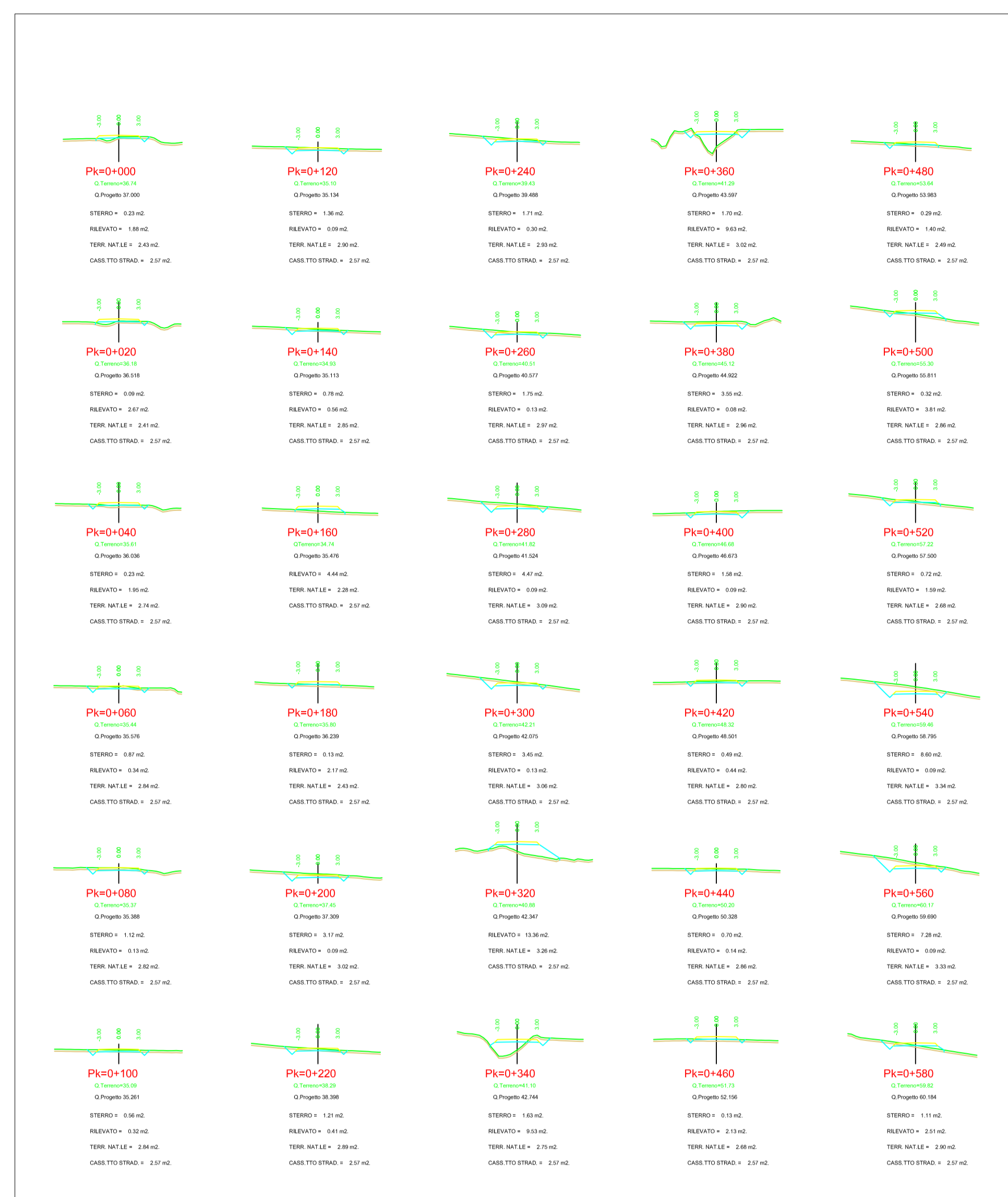


PROFILA LONGITUDINALE - Asse Entrata CU4 - Tratto n°2

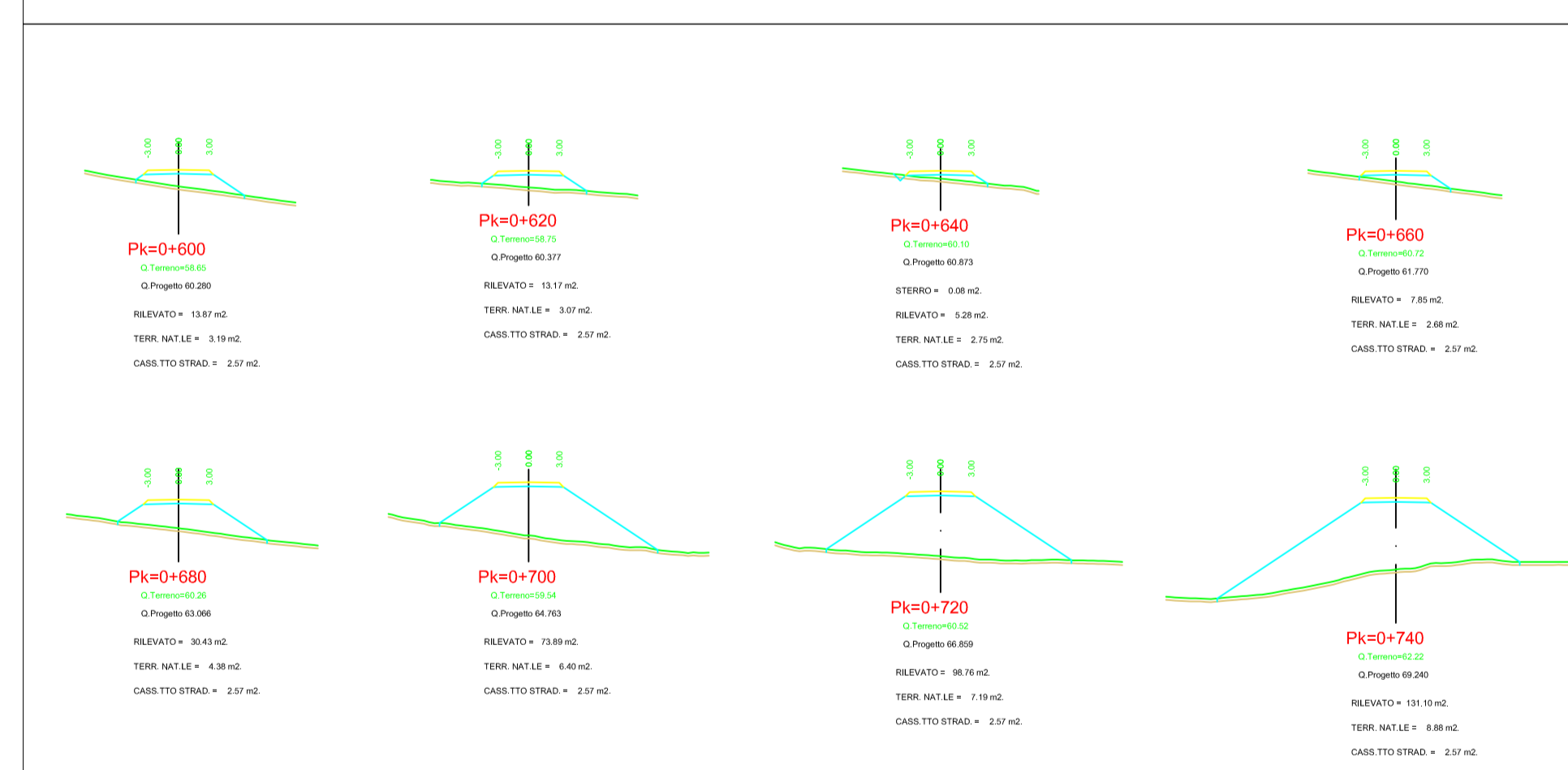


PROFILA LONGITUDINALE - Asse Entrata CU4 - Tratto n°3

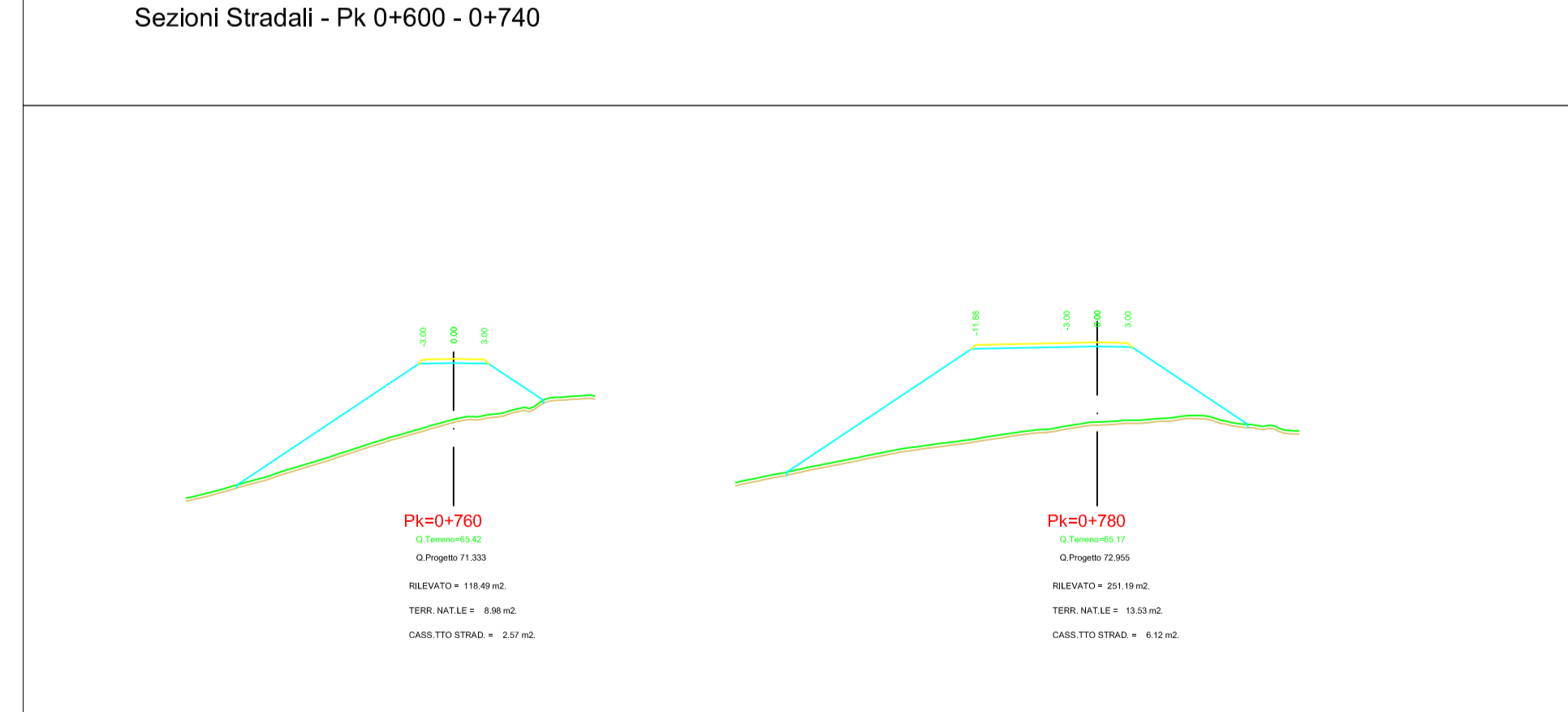
**SEZIONI STRADALI**



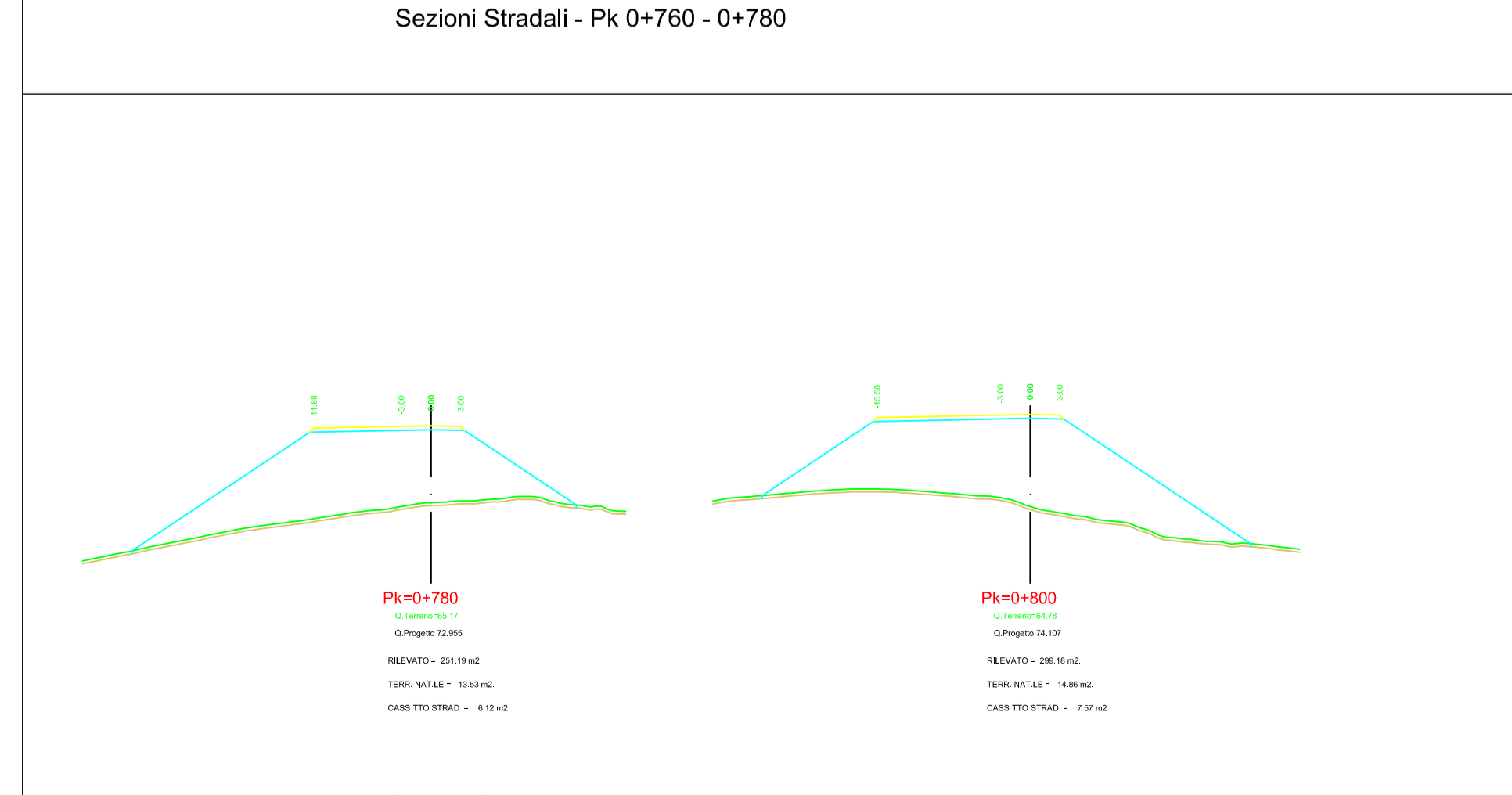
Sezioni Stradali - Pk 0+000 - 0+580



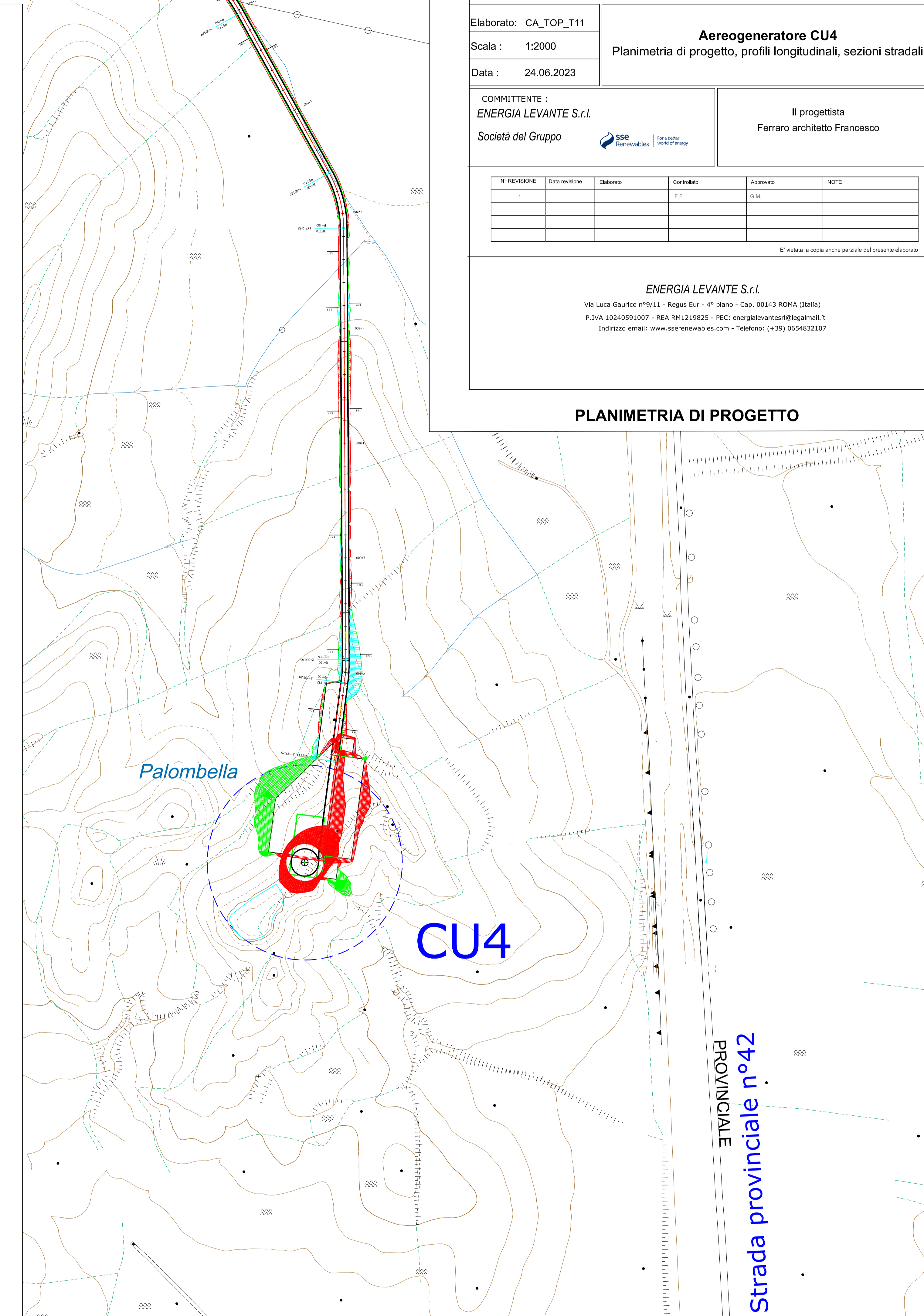
Sezioni Stradali - Pk 0+600 - 0+740



Sezioni Stradali - Pk 0+760 - 0+780



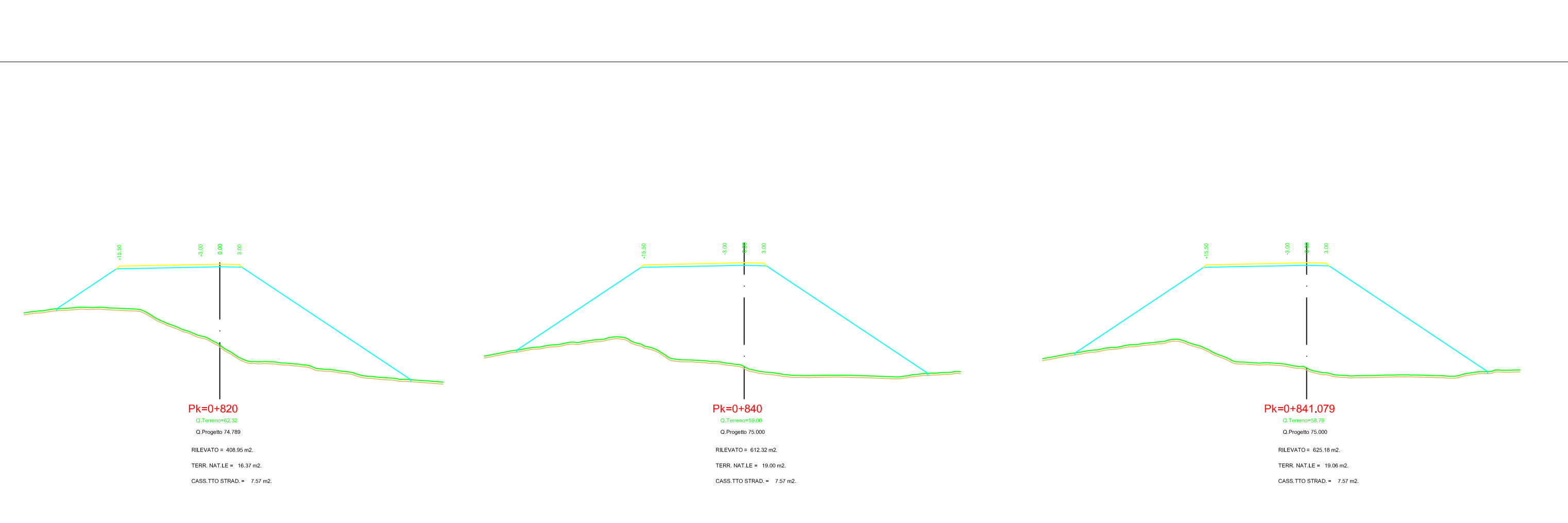
Sezioni Stradali - Pk 0+780 - 0+800



Palombella

CU4

Strada provinciale n°42  
PROVINCIALE



Sezioni Stradali - Pk 0+820 - 0+841.079