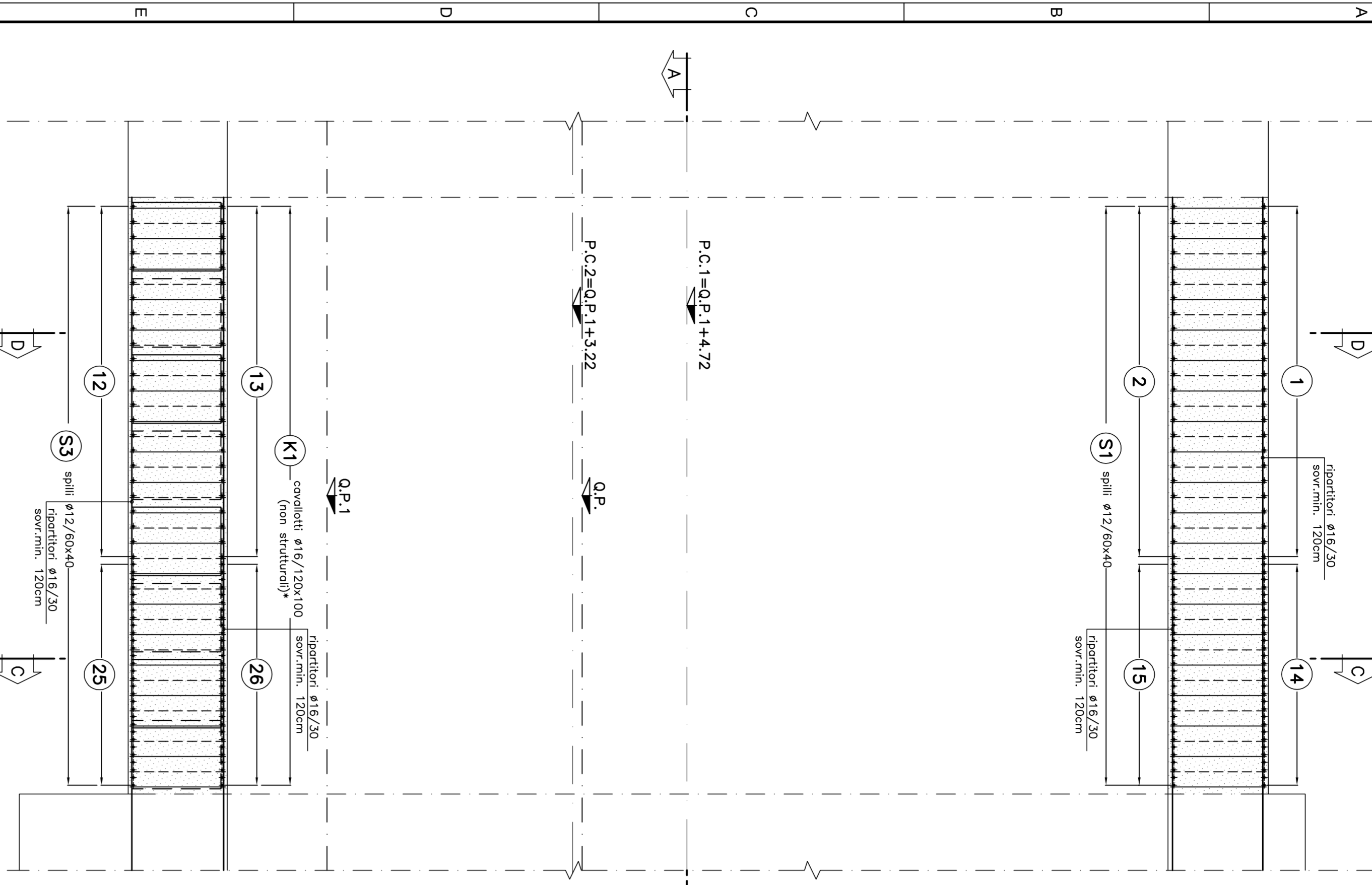
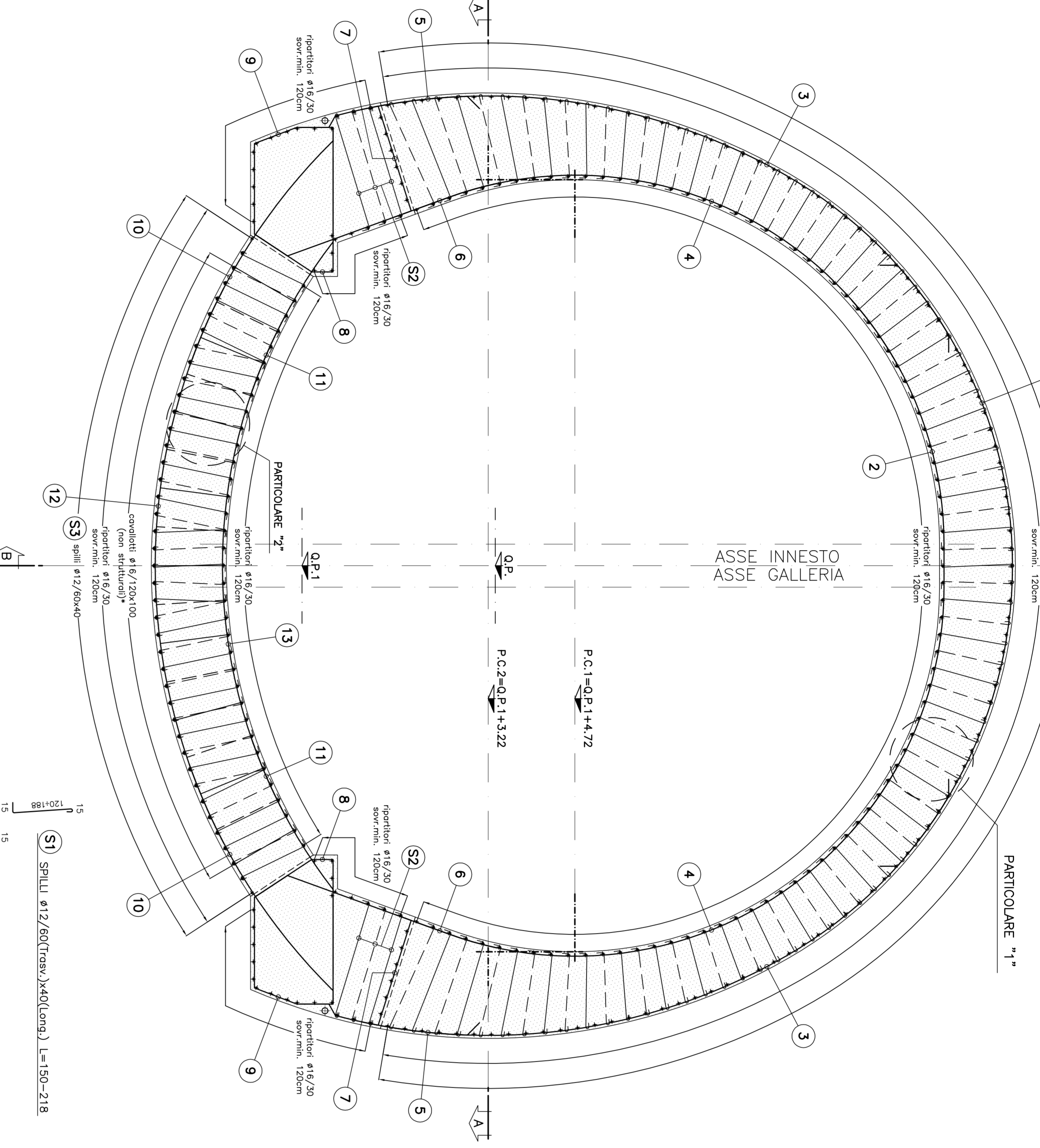


SEZIONE B-B
SCALA 1:50

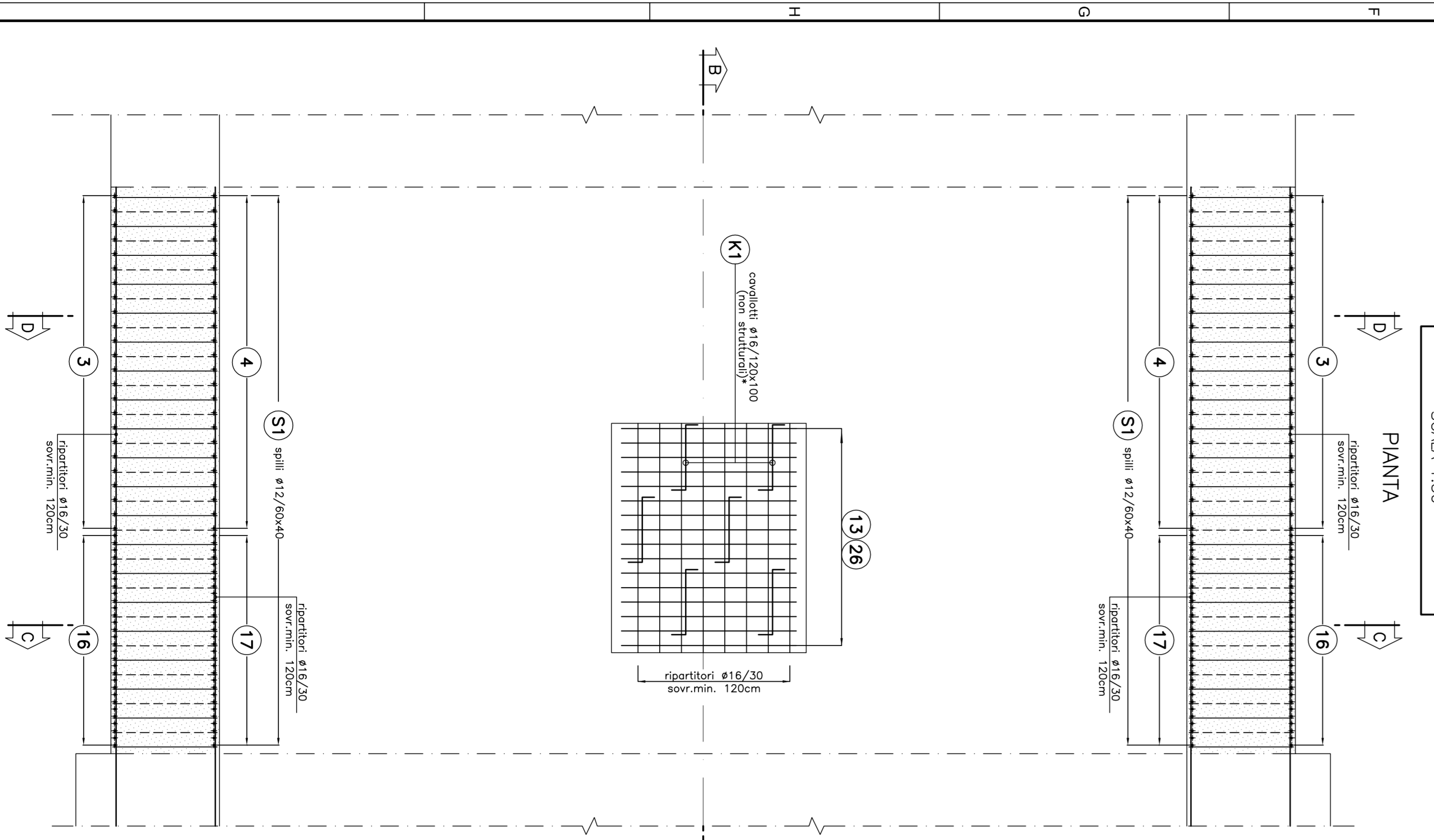
PROFILO LONGITUDINALE



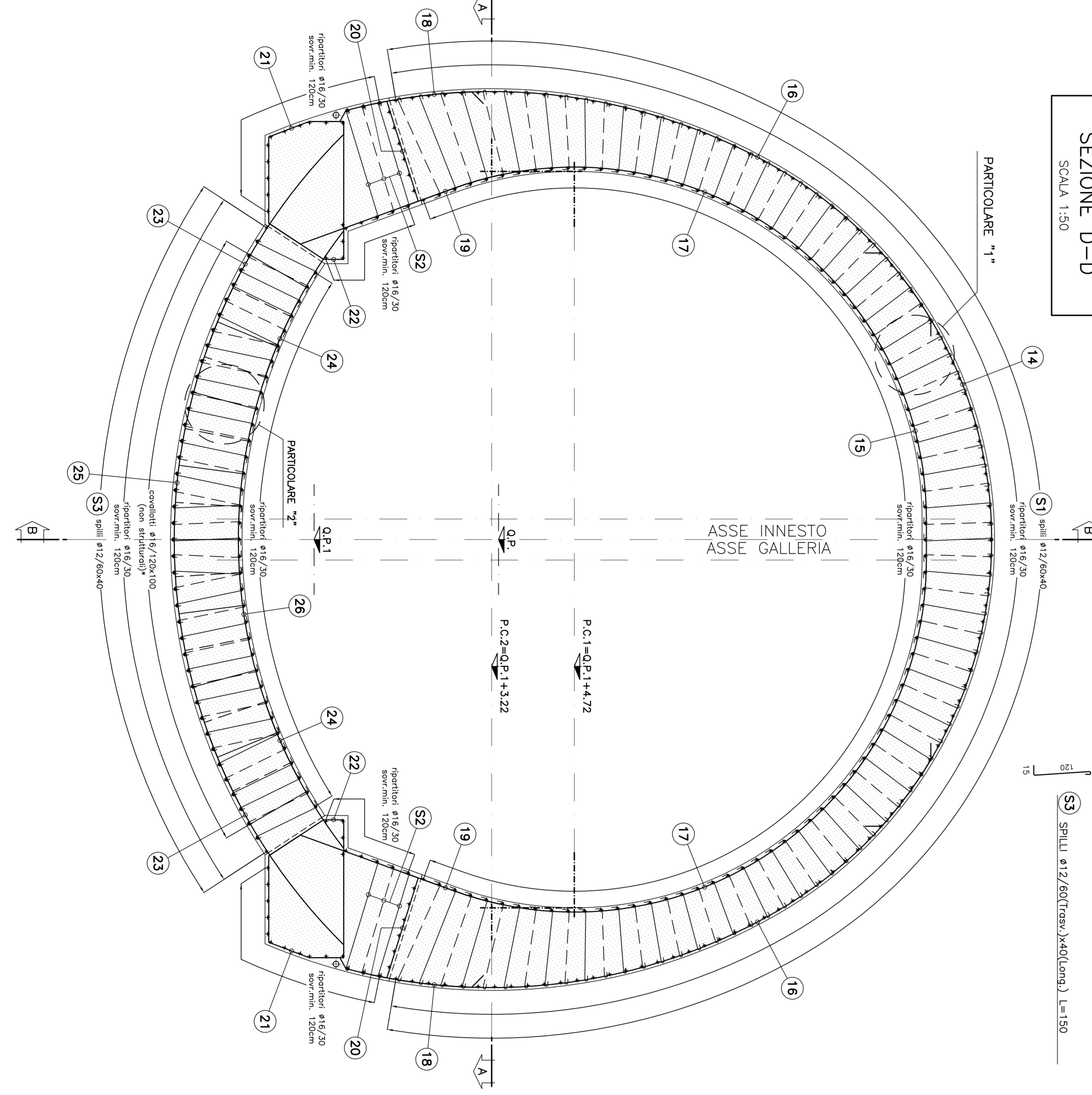
SEZIONE C-C
SCALA 1:50



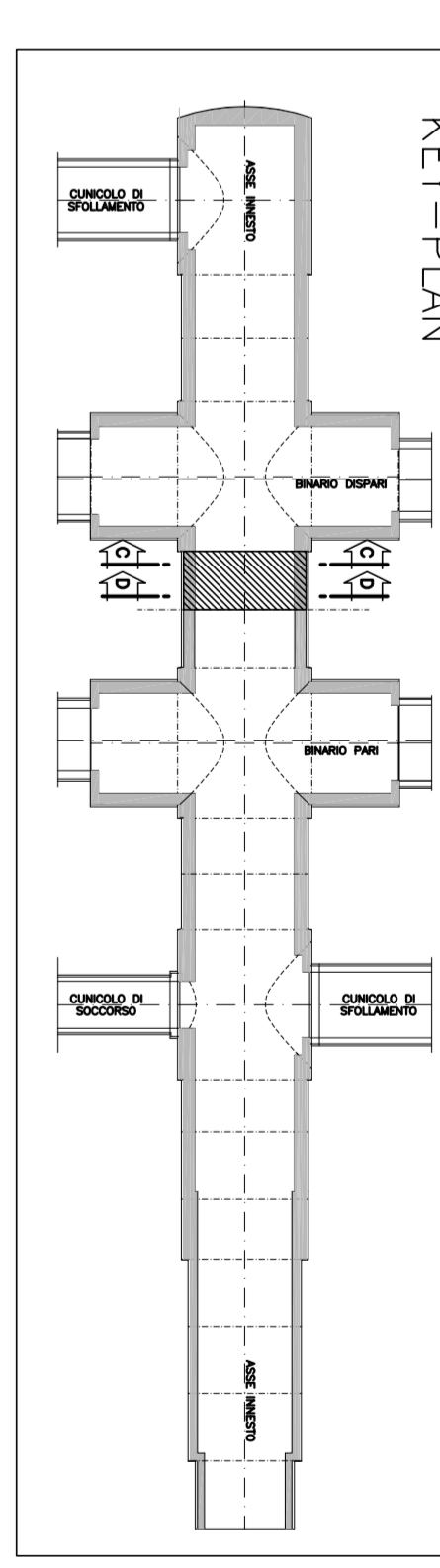
SEZIONE A-A
SCALA 1:50



SEZIONE D-D
SCALA 1:50

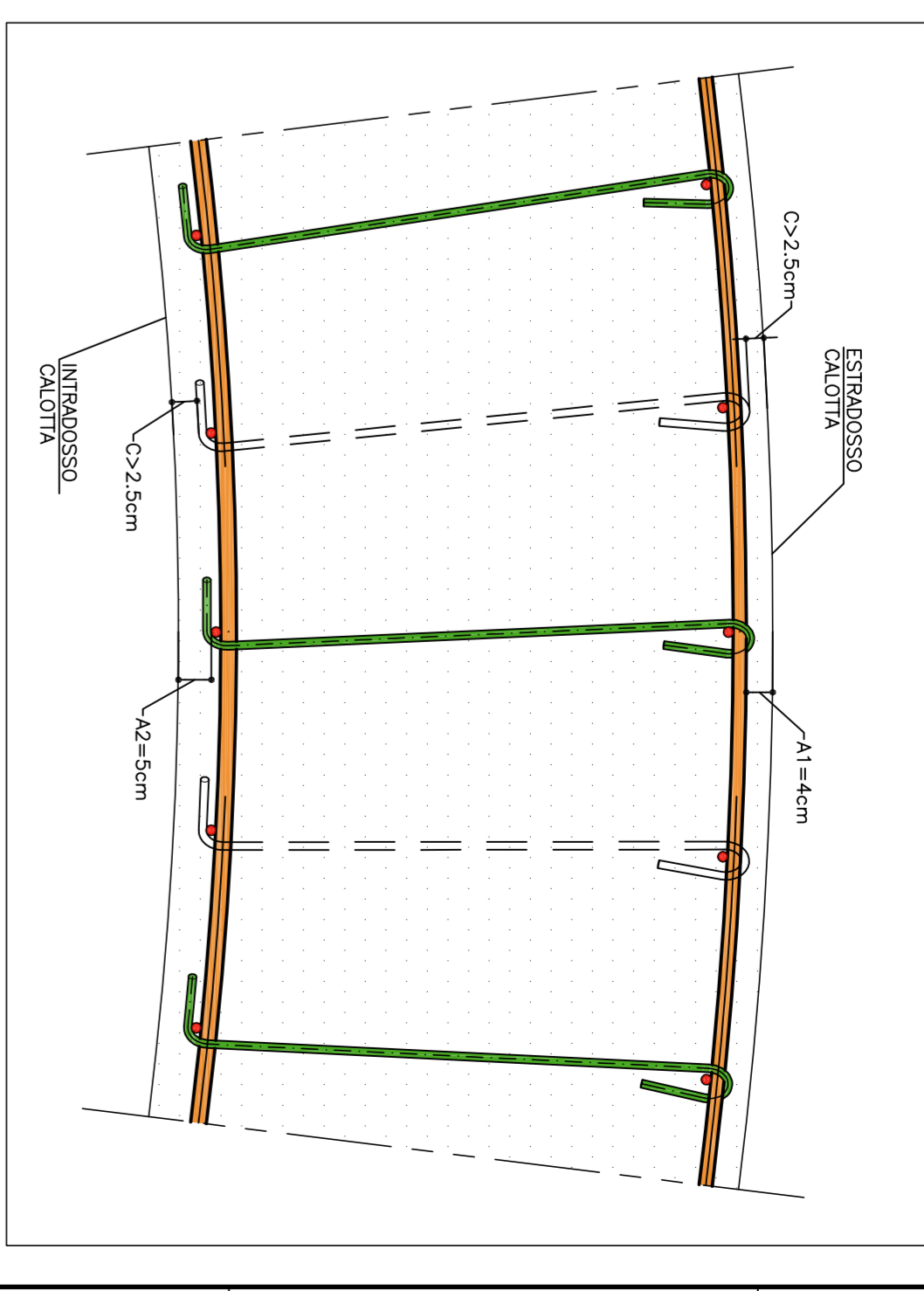


KEY-PLAN



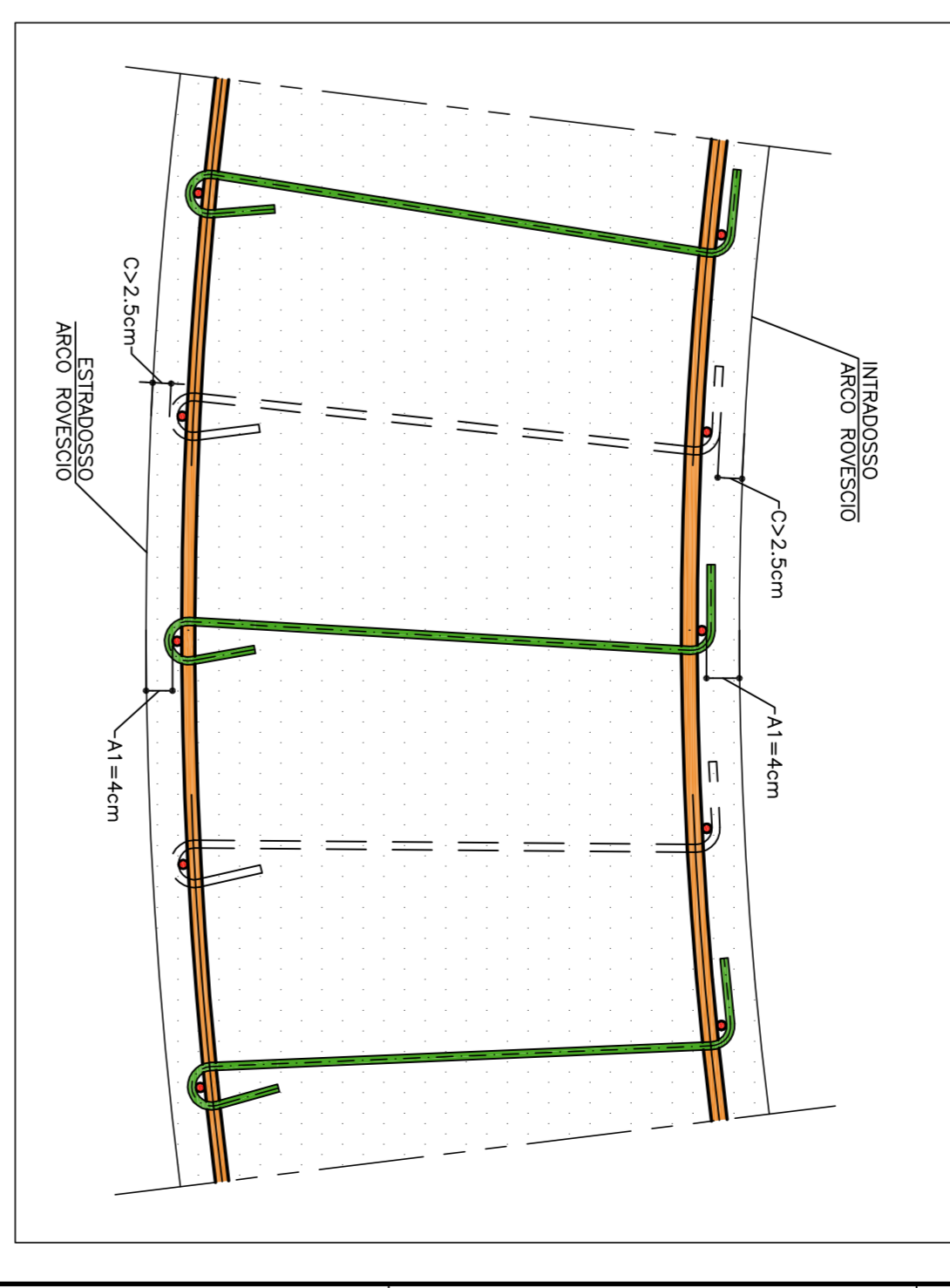
PARTICOLARE "1"
SCALA 1:10

PARTICOLARE COPRIFERRO CALOTTA



PARTICOLARE "2"
SCALA 1:10

PARTICOLARE COPRIFERRO ARCO RIVESSIO



SCHEMA COPRIFERRO

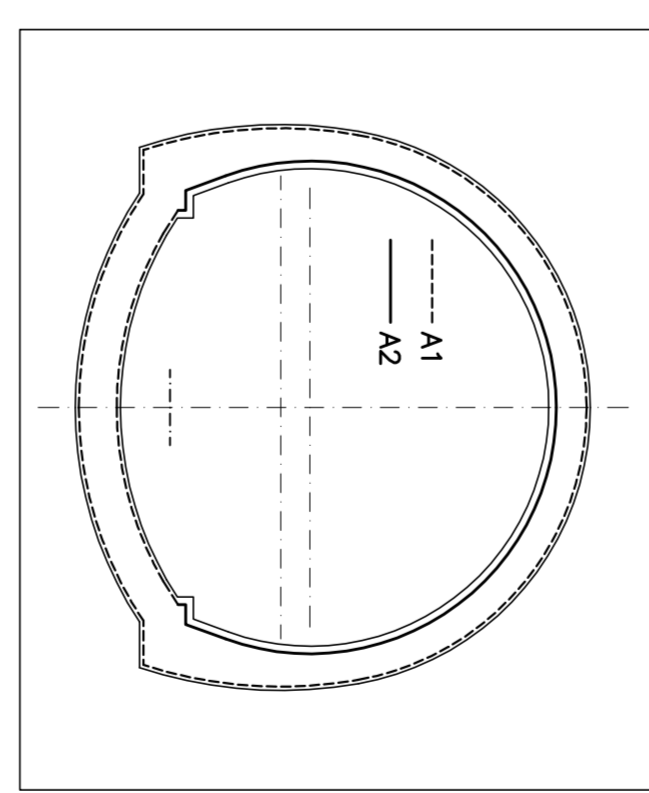


TABELLA MATERIALI

ACQUA MARIANE	8400
COMPRESSO	(vedi note)
MADE	PER TUTTO QUANTO NON INDIACO A FISSA RENDIMENTO AL CARINATO
OPERE CALDI	- ESADURO DI RIFERIMENTO "OPERE DI LINEE-CARATTERISTICHE DEI MATERIALI E NOTE" (codici 001-007-008-009-010)
	- PER TUTTI I DETTAGLI DIMENSIONALIZZAZIONE SI VEDA L'ALLEGATO TECNICO
LEGENDA	
- P.C.	PANO DEI CENTRI
- G.P.	QUOTA PROGETTO
- P.I.M.	PANO IMPRESA MARITTE
NOTA	
I CANTALOTTI NON SONO DA CONSERVARE STRUTTURALI E POSSONO ESSERE SOSTITUITI SOSTITUI CON ELEMENTI ALTERNATIVI	

COMITENTE:
AL.M. SORRENZANO

GENERAL CONTRACTOR:
COOP

GENERAL CONTRACTOR:
ITALFER

GENERAL CONTRACTOR:
SRI

GENERAL CONTRACTOR:
SRI

GENERAL CONTRACTOR:
SRI

GENERAL CONTRACTOR:
SRI

GENERAL CONTRACTOR:
SRI

GENERAL CONTRACTOR:
SRI

GENERAL CONTRACTOR:
SRI

GENERAL CONTRACTOR:
SRI

GENERAL CONTRACTOR:
SRI

GENERAL CONTRACTOR:
SRI

GENERAL CONTRACTOR:
SRI

GENERAL CONTRACTOR:
SRI

GENERAL CONTRACTOR:
SRI

GENERAL CONTRACTOR:
SRI