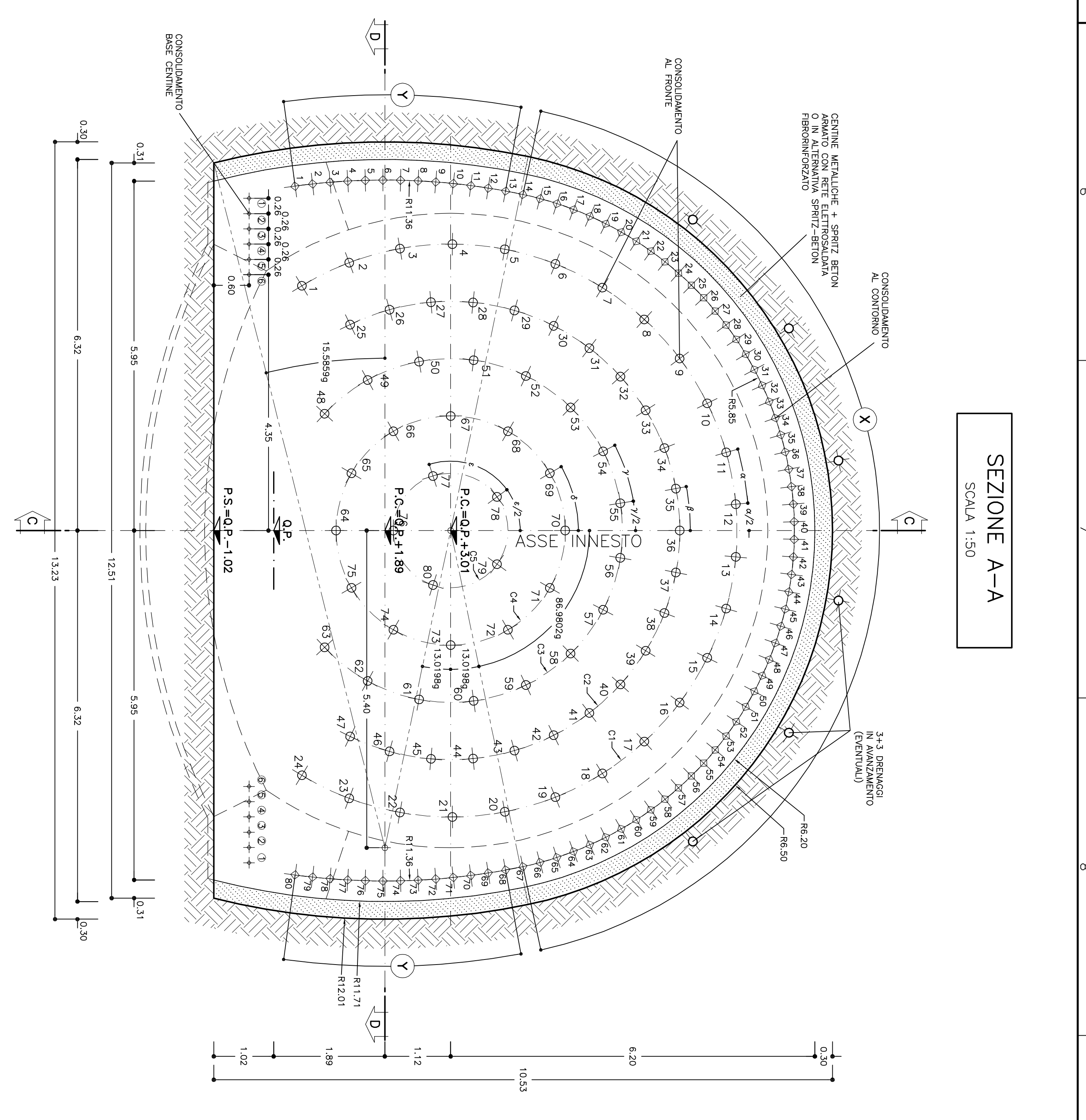


SEZIONE C-C SCALA 1:50



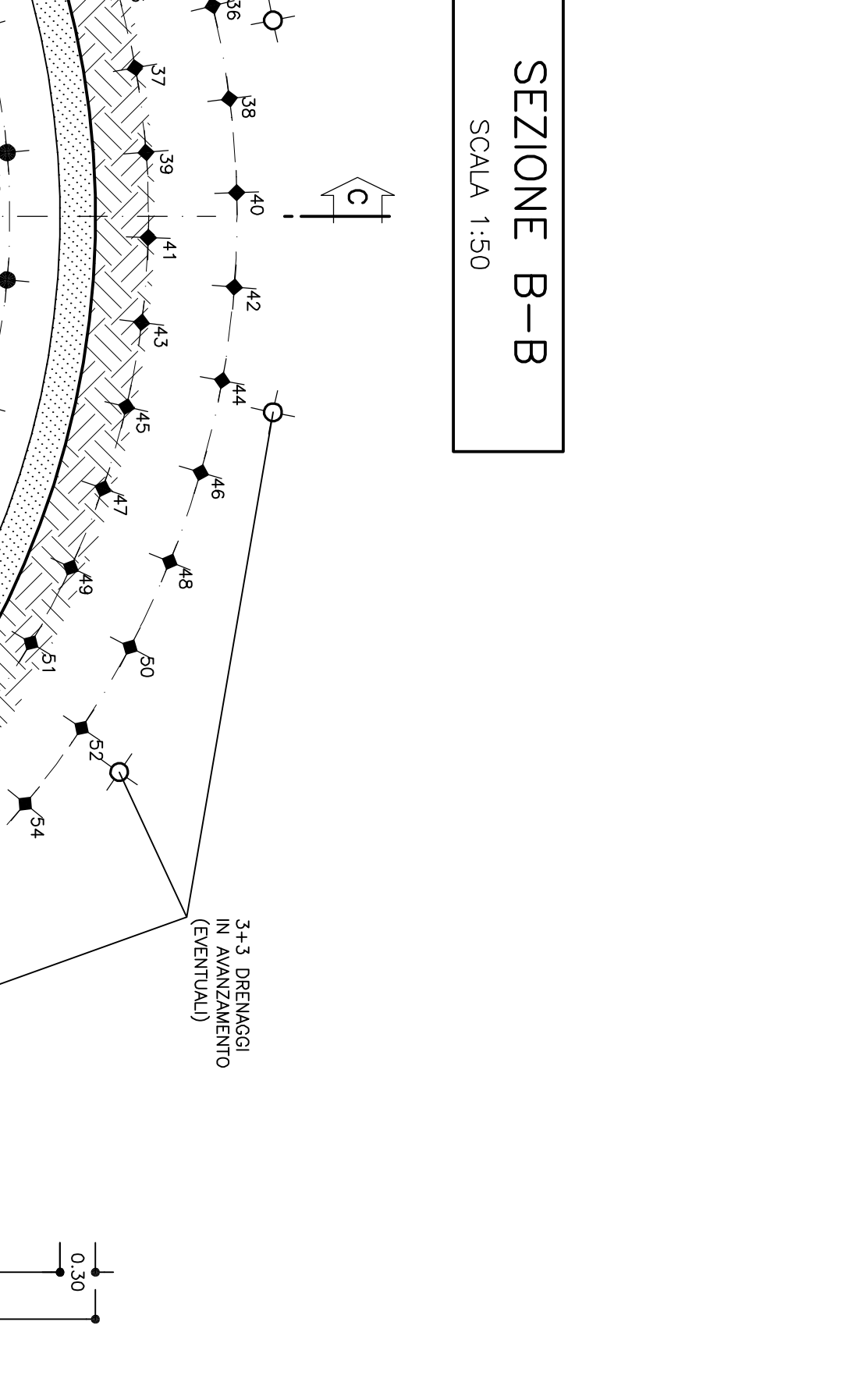
SEZIONE A-A SCALA 1:50

TABELLA MATERIALI: Table listing materials used in the project, including concrete grades (B40C, B30C), reinforcement (S320, S235), and other components like cables and cables with sheath.

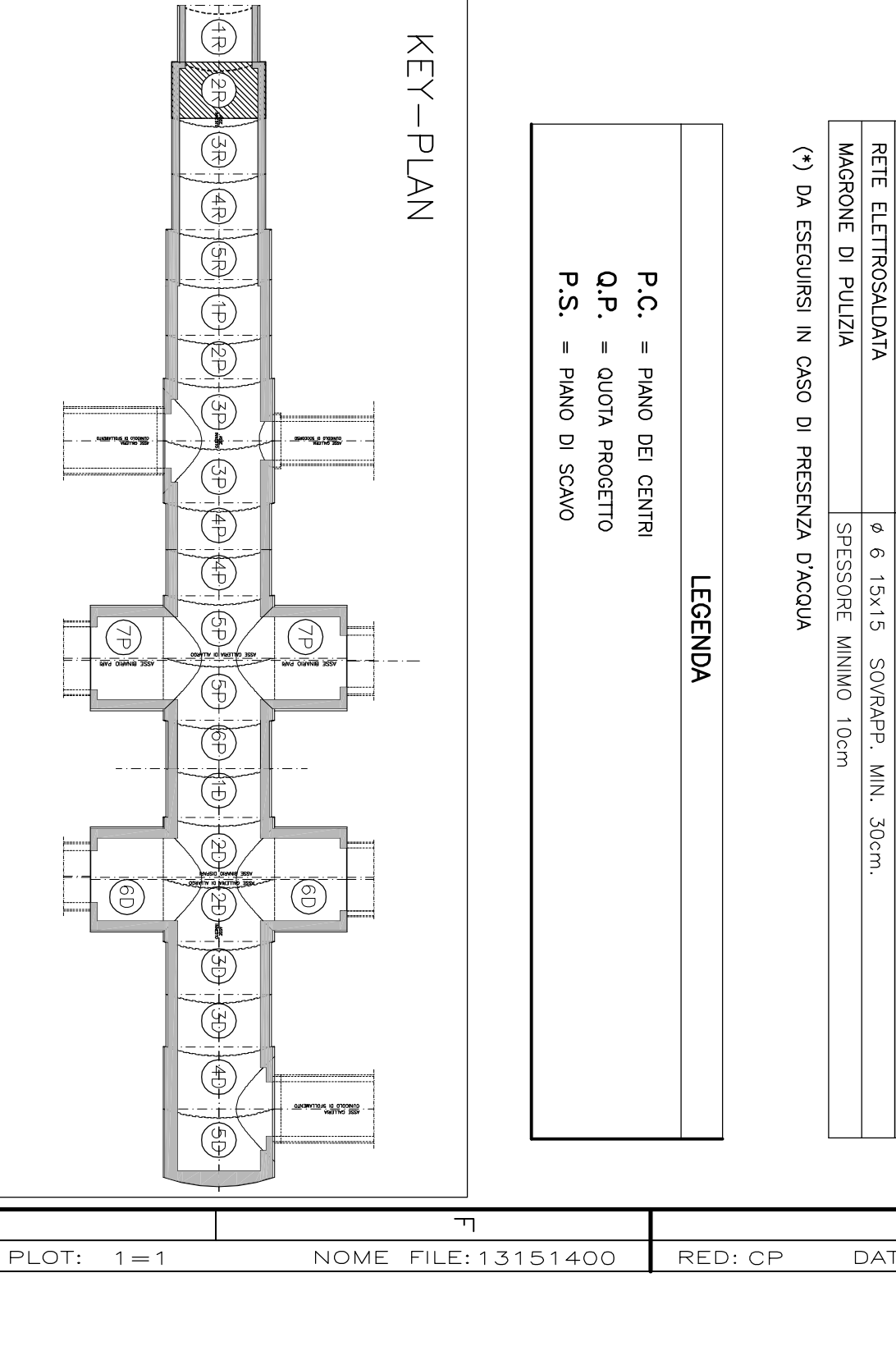
GEOMETRIA CONSOLIDAMENTI AL CONFINO: Table detailing consolidation parameters at the perimeter, including stationing, length, and area.

GEOMETRIA CONSOLIDAMENTI AL FRONTE: Table detailing consolidation parameters at the front face, including stationing, length, and area.

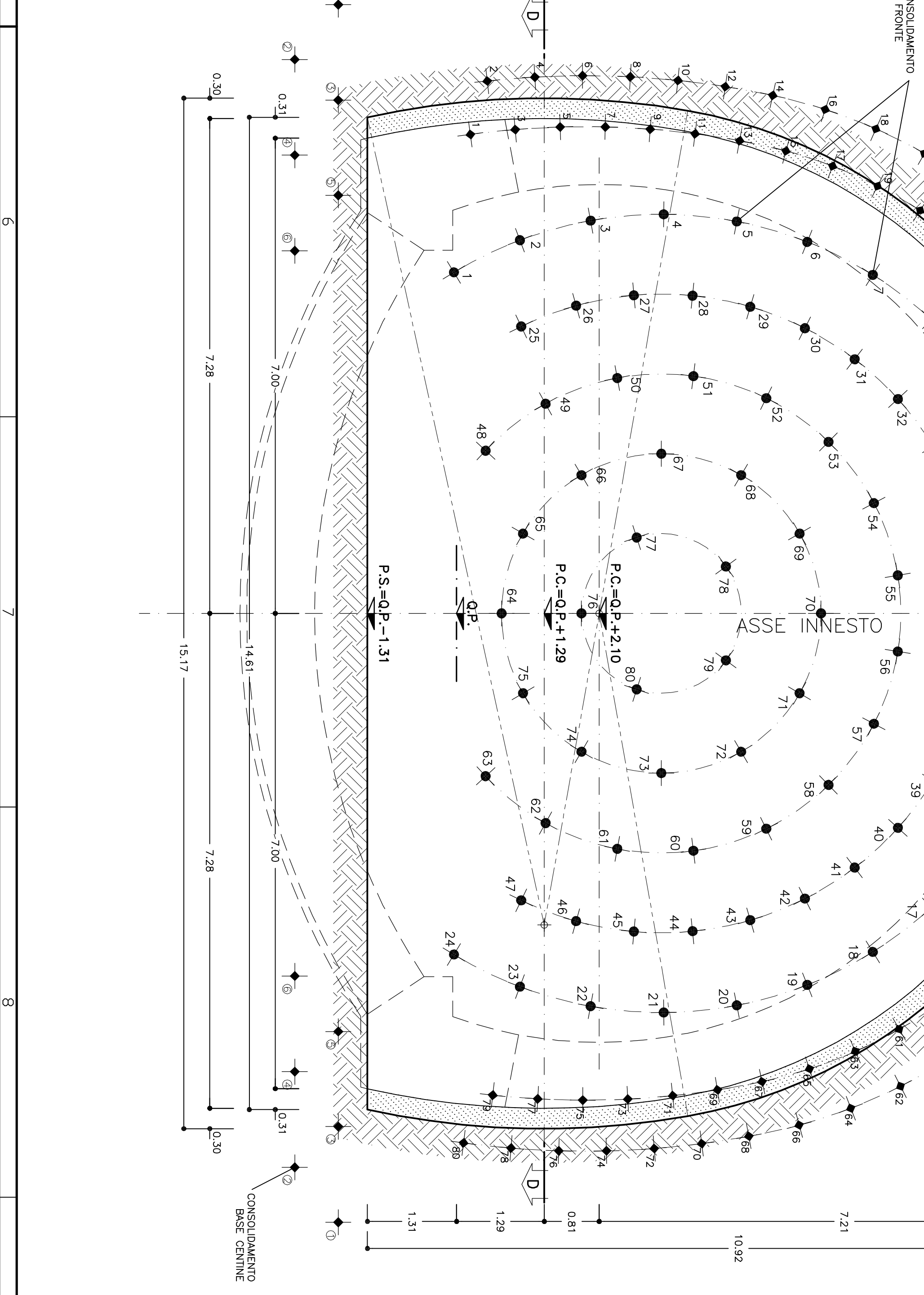
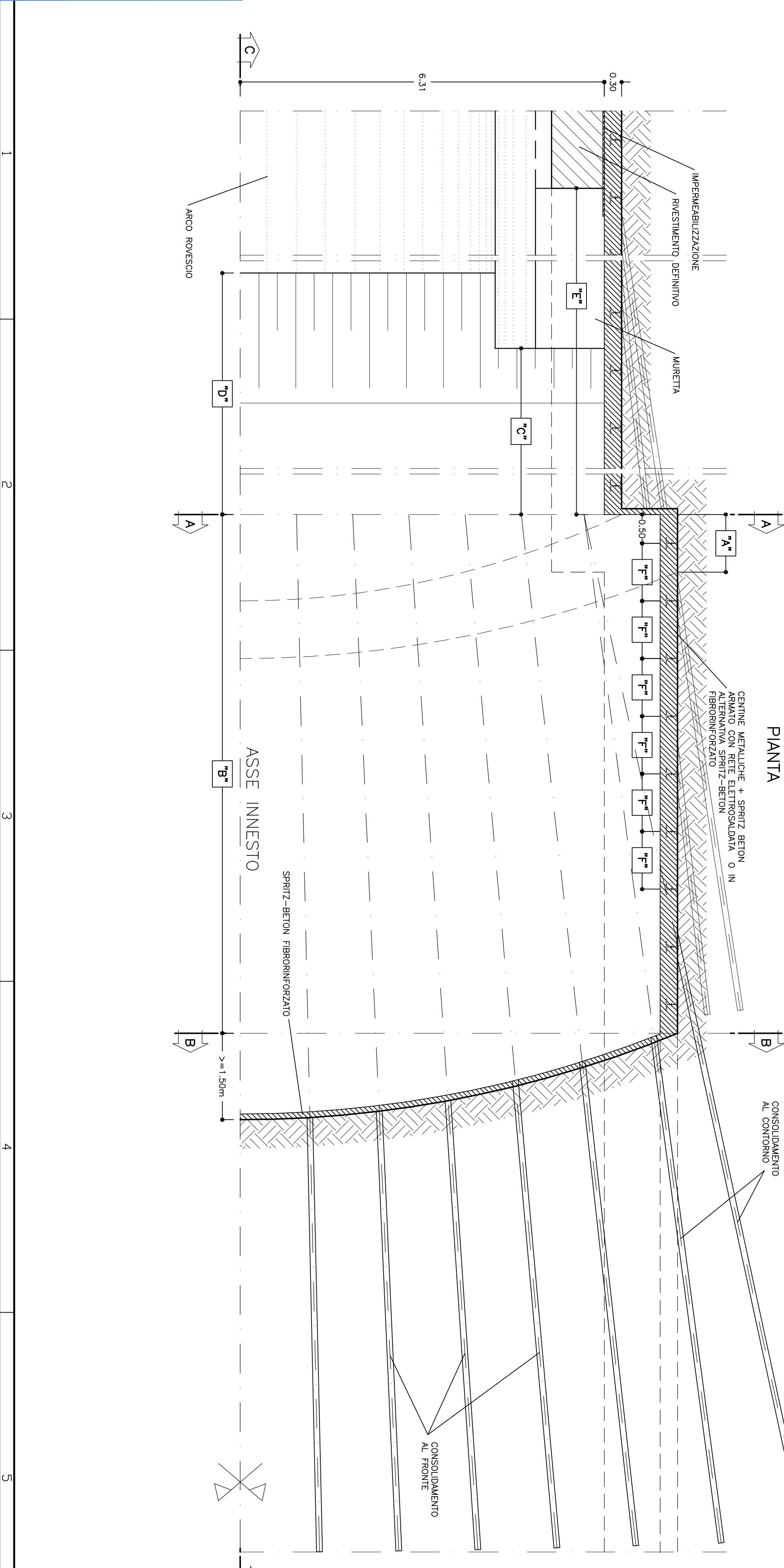
GEOMETRIA CONSOLIDAMENTO BASE CENTRA: Table detailing consolidation parameters at the base center, including stationing, length, and area.



SEZIONE B-B SCALA 1:50



SEZIONE D-D SCALA 1:50



Project information block containing a table of project details, logos for INFRASTRUTTURE FERROVIARIE STRATEGICHE DEFINITE DALLA LEGGE OBBIETTIVO N.443/01, and logos for the contractor COIV and partners TRFI and ITALFERR.