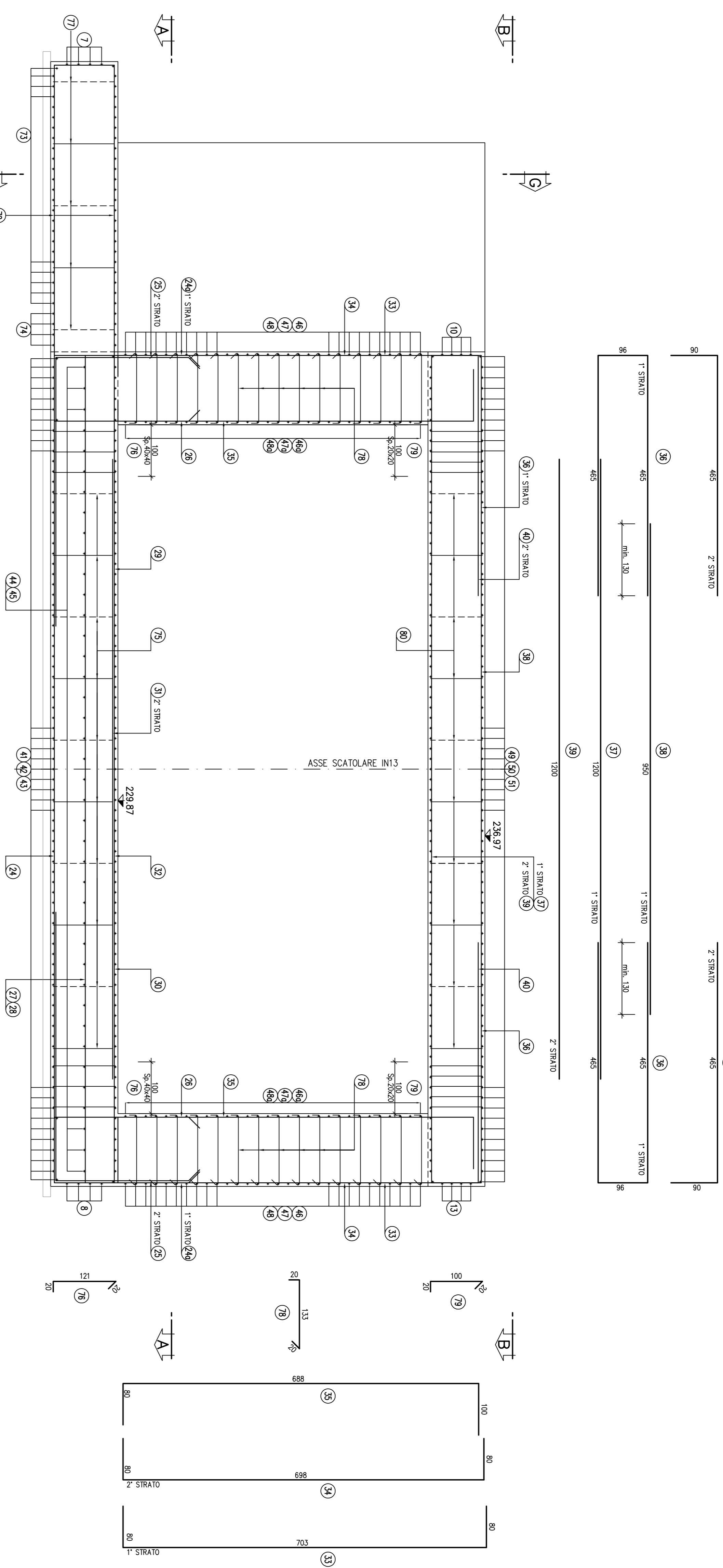


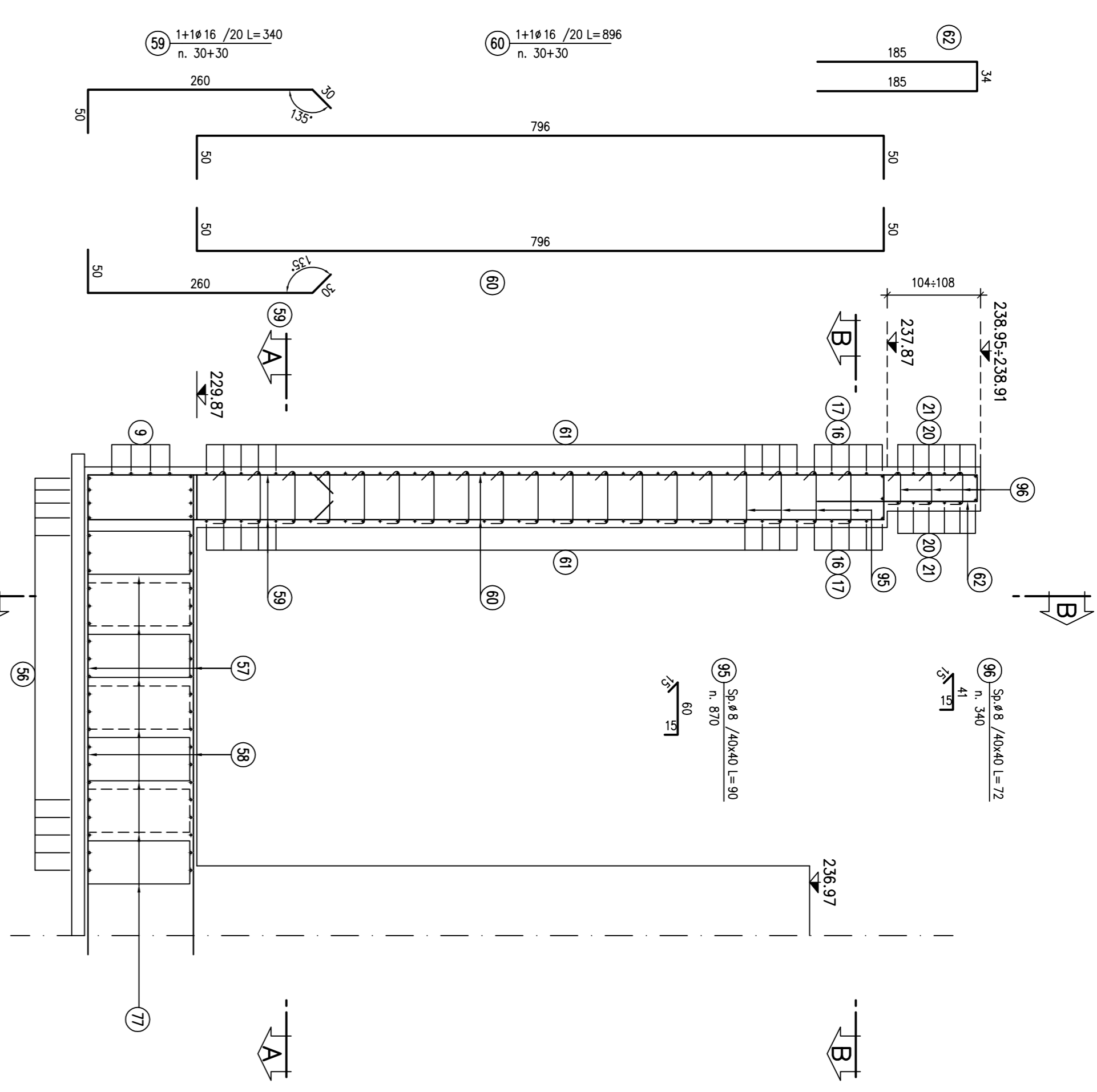
SEZIONE TRASVERSALE E-E

SCALA 1:50



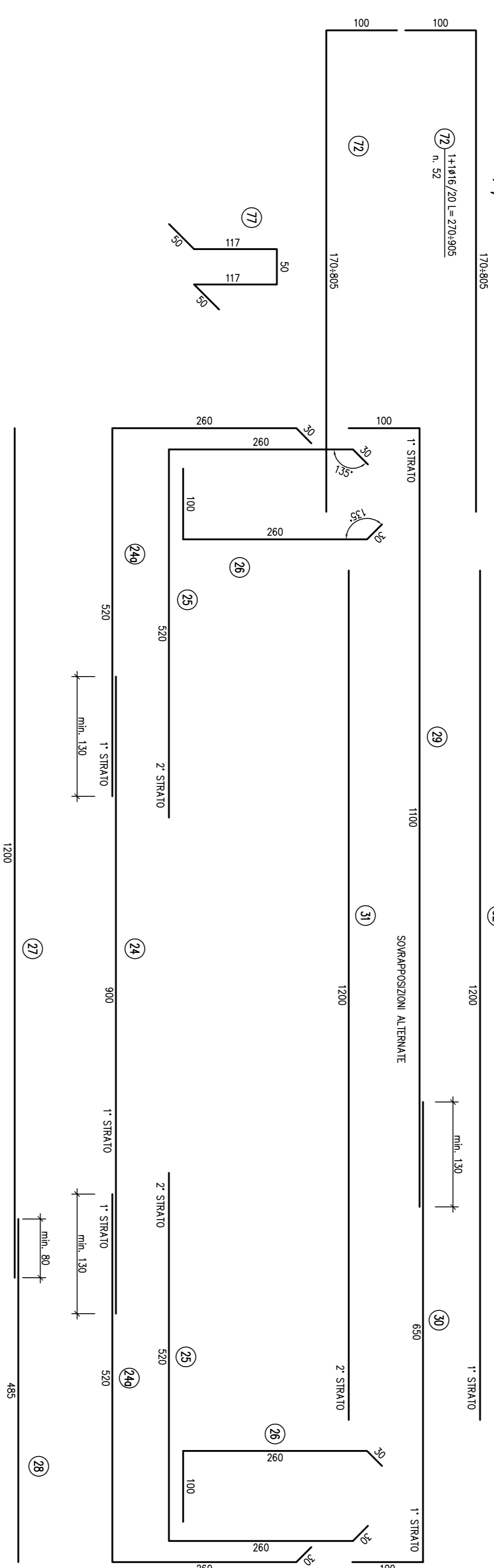
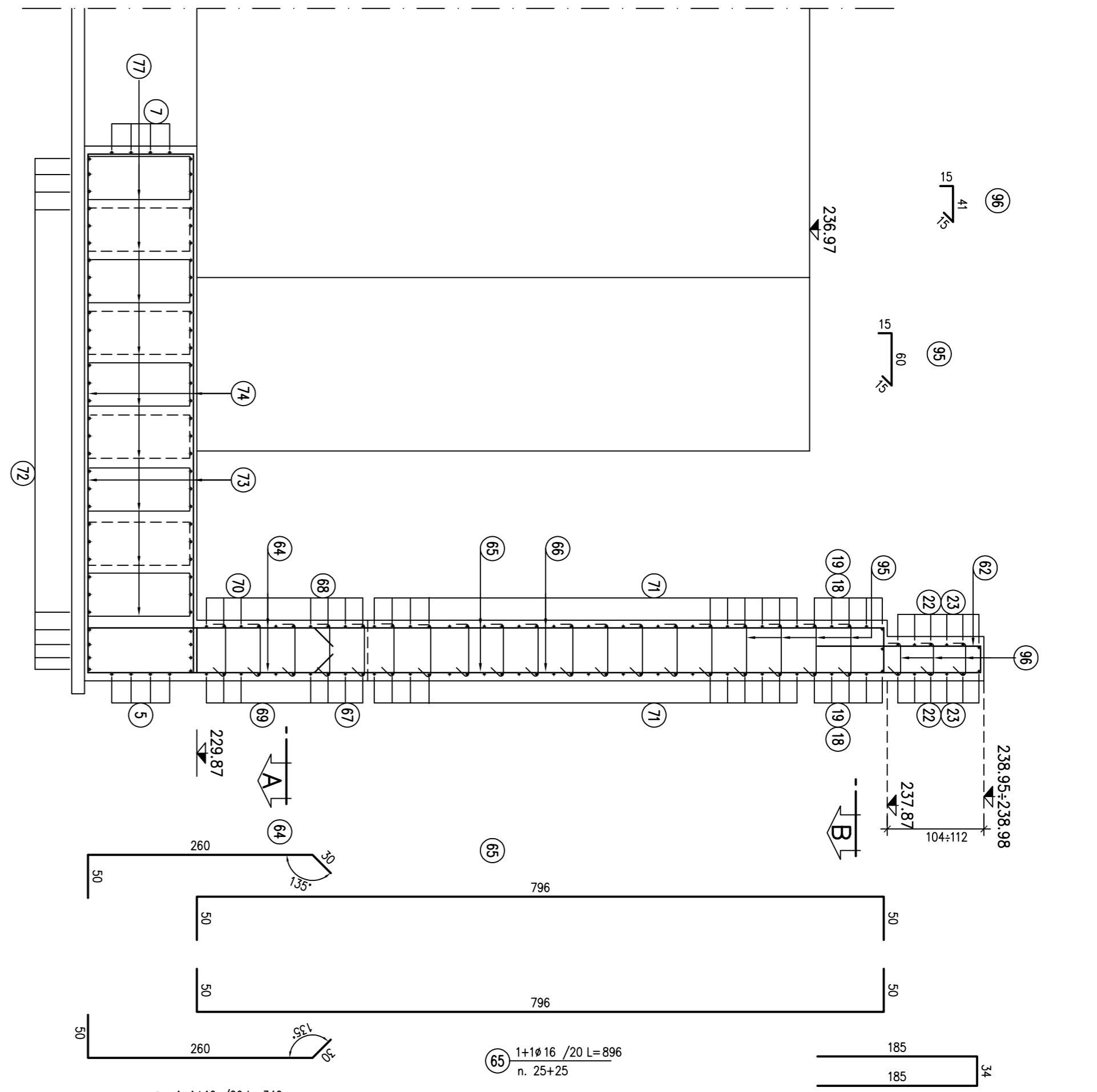
SEZIONE F-F

SCALA 1:50



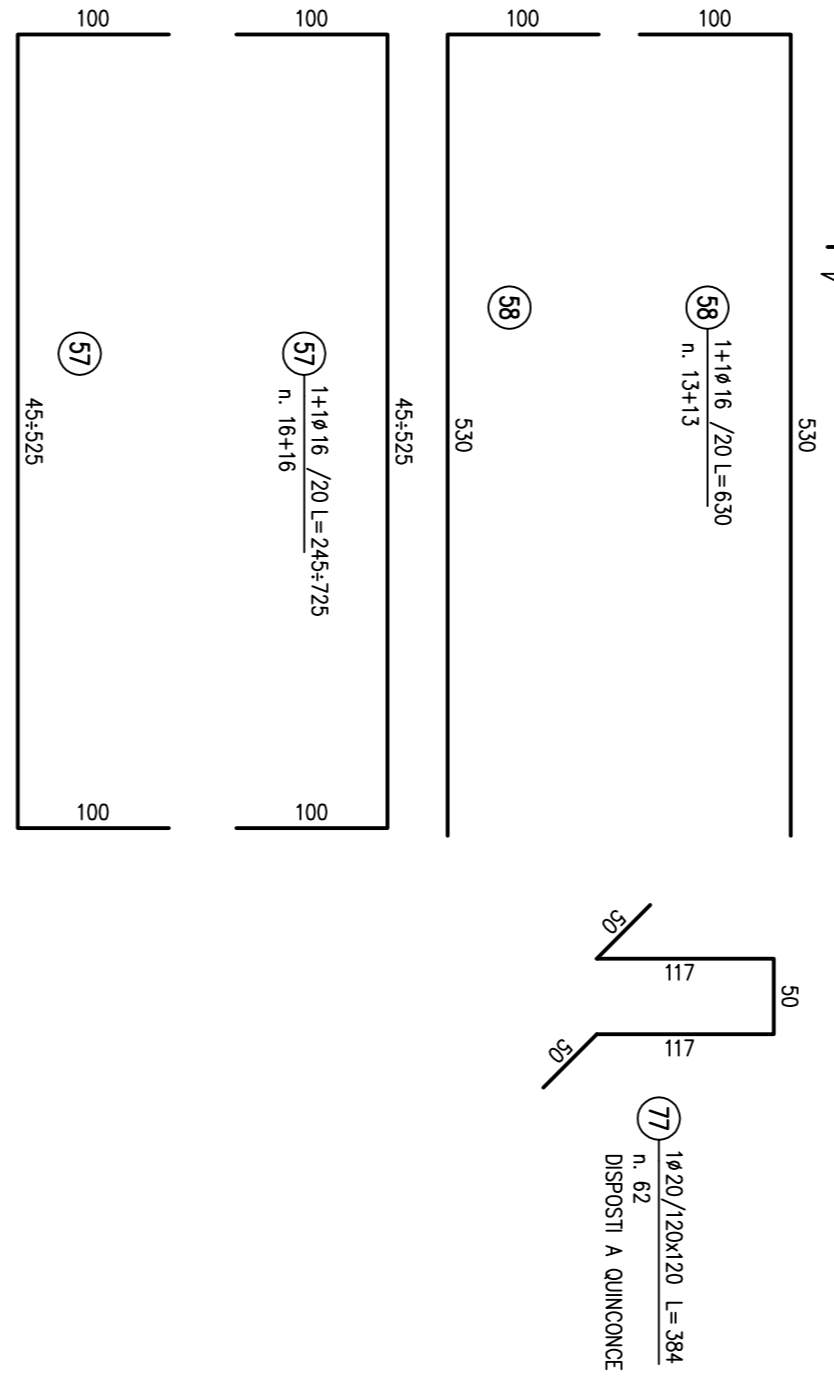
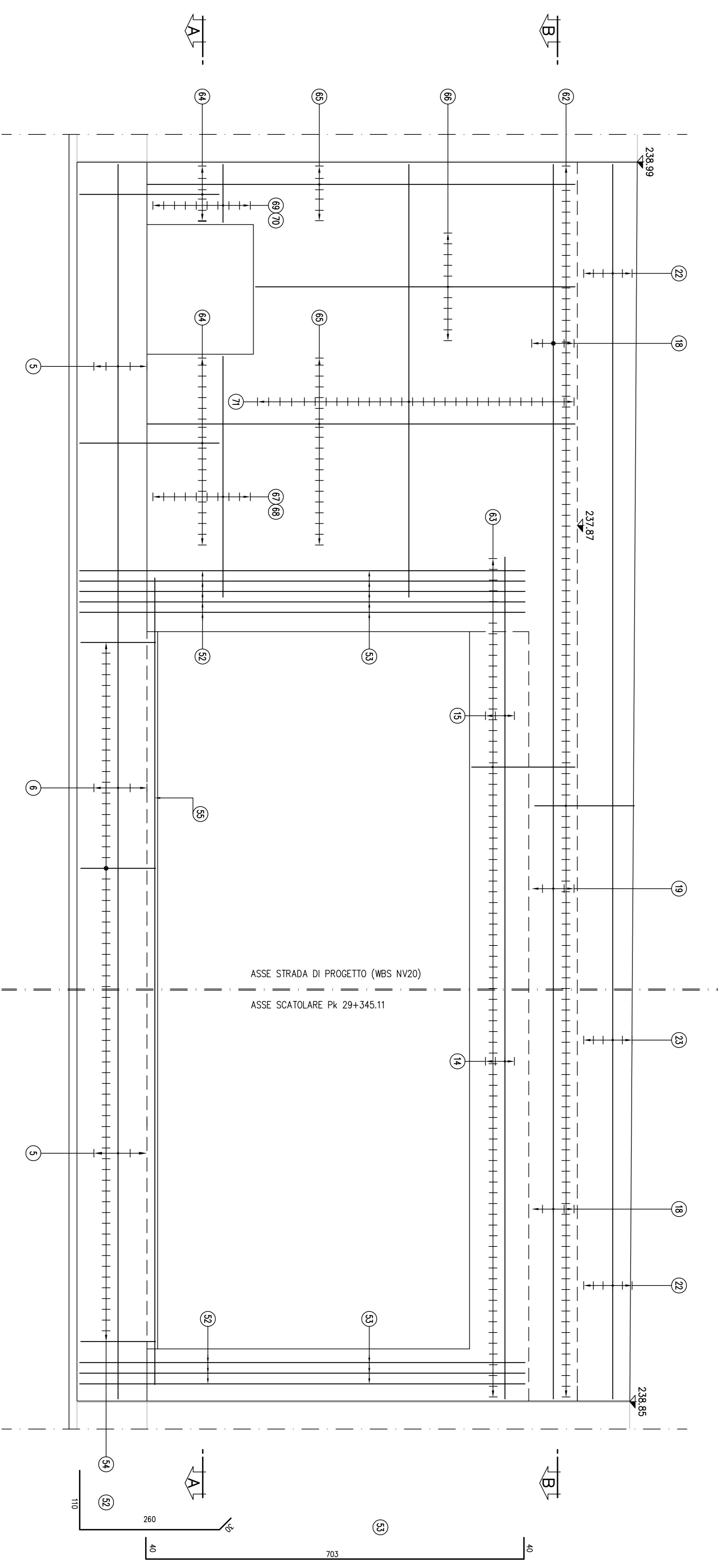
SEZIONE G-G

SCALA 1:50



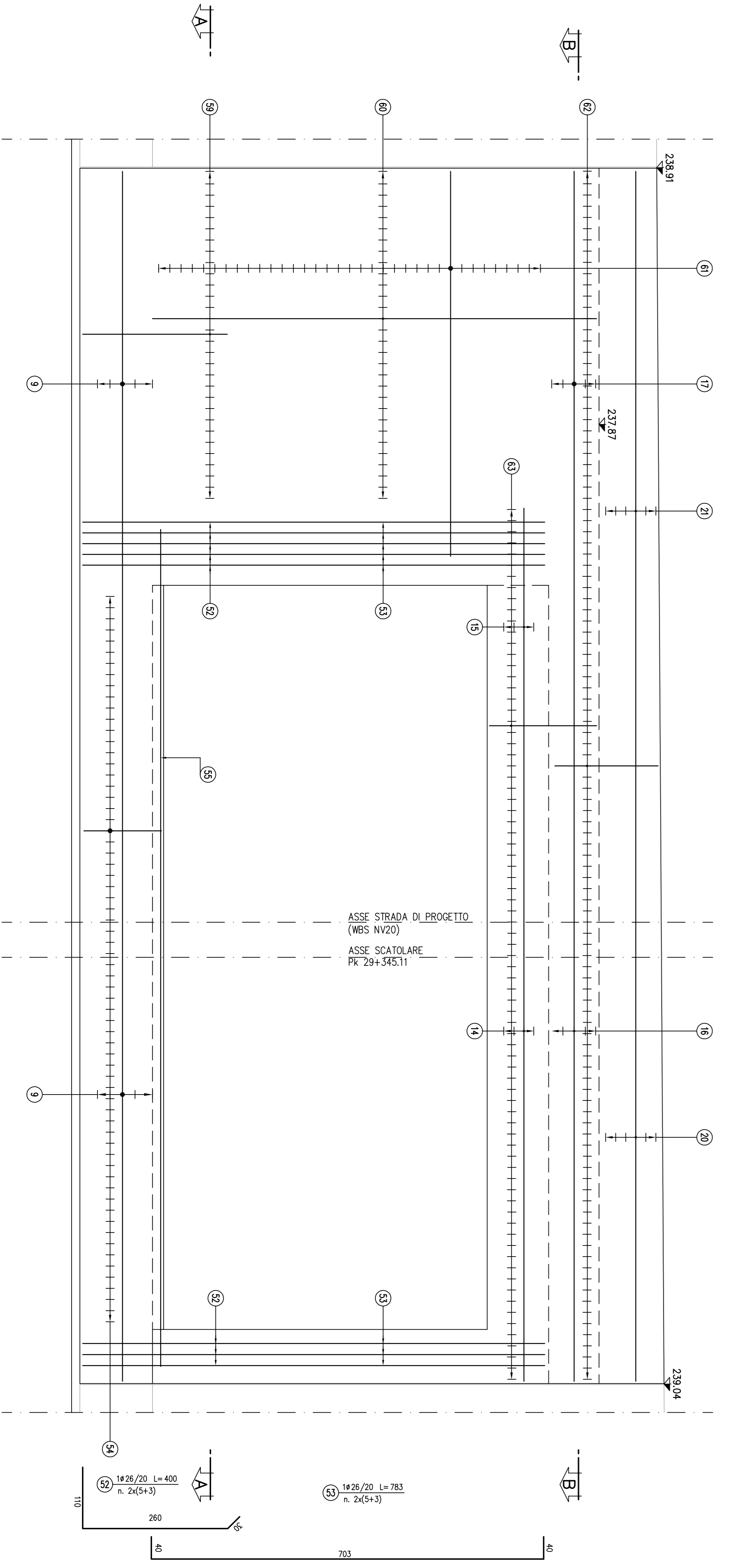
VISTA L-L

SCALA 1:50



VISTA I-I

SCALA 1:50



NOTE:  
Per la tabella materiali si fa riferimento all'elaborato (651-00-E-TT-000-00-001)

**COMITENTE**

ATA SORVELLANZA

**GENERAL CONTRACTOR**

**COCLIV**

INFRASTRUTTURE FERROVIARIE STRATEGICHE DEFINITE DALLA  
LEGE OBIETTIVO N.443/01  
TRATTA A.V./A.C. TERZO VALICO DEI GIOVI  
PROGETTO ESECUTIVO

Solbio Scaldare Pk 29+345

Ambitura sottopasso TRV4

**GENERAL CONTRACTOR**

**Cocliv**

SCALA: 1:50

PROGETTAZIONE	CONFERMA	LETTO	FABR	VERIFIC	CONFERMA	PROV
01	01	02	01	01	01	01
01	01	01	01	01	01	01

1:50