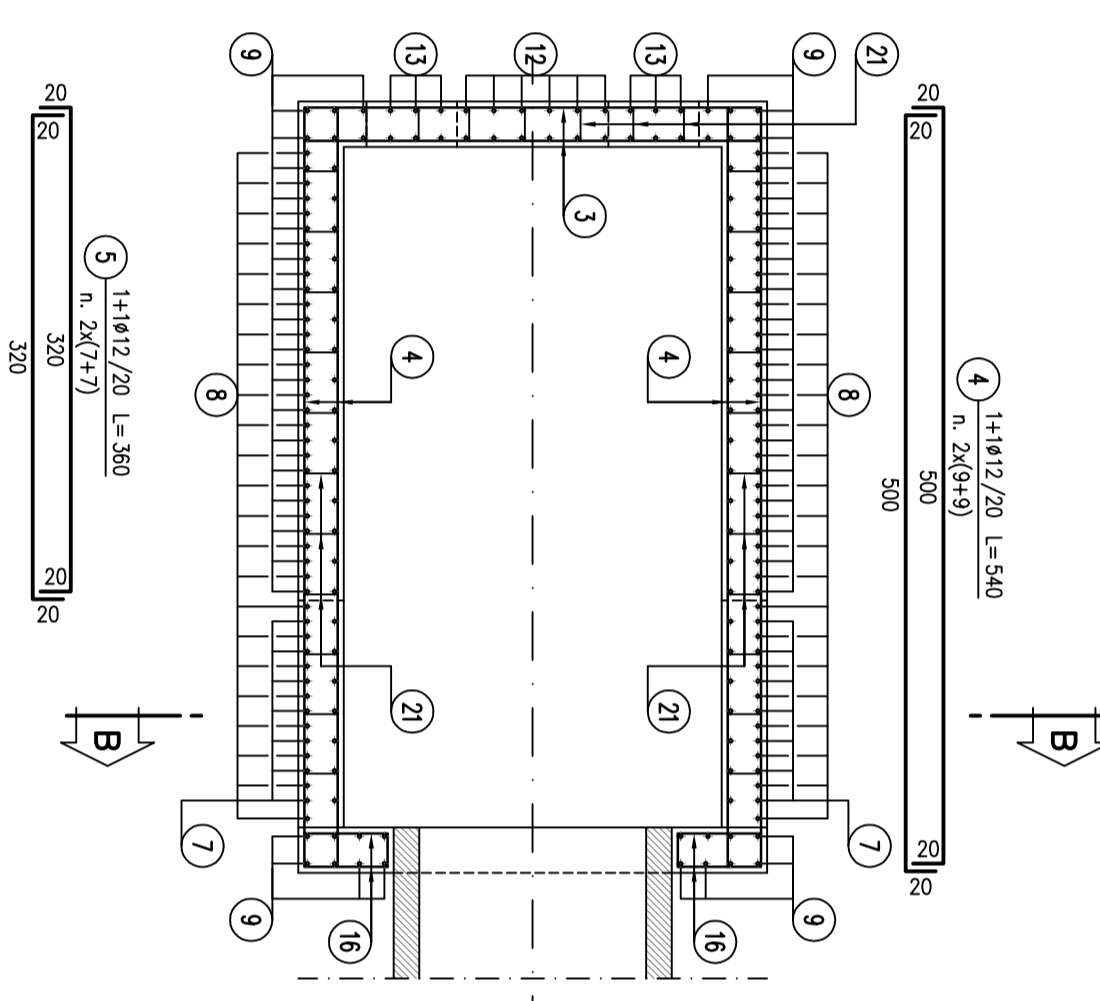


### MANUFATTO IMBOCCO

SCALA 1:50  
ARMA TURA

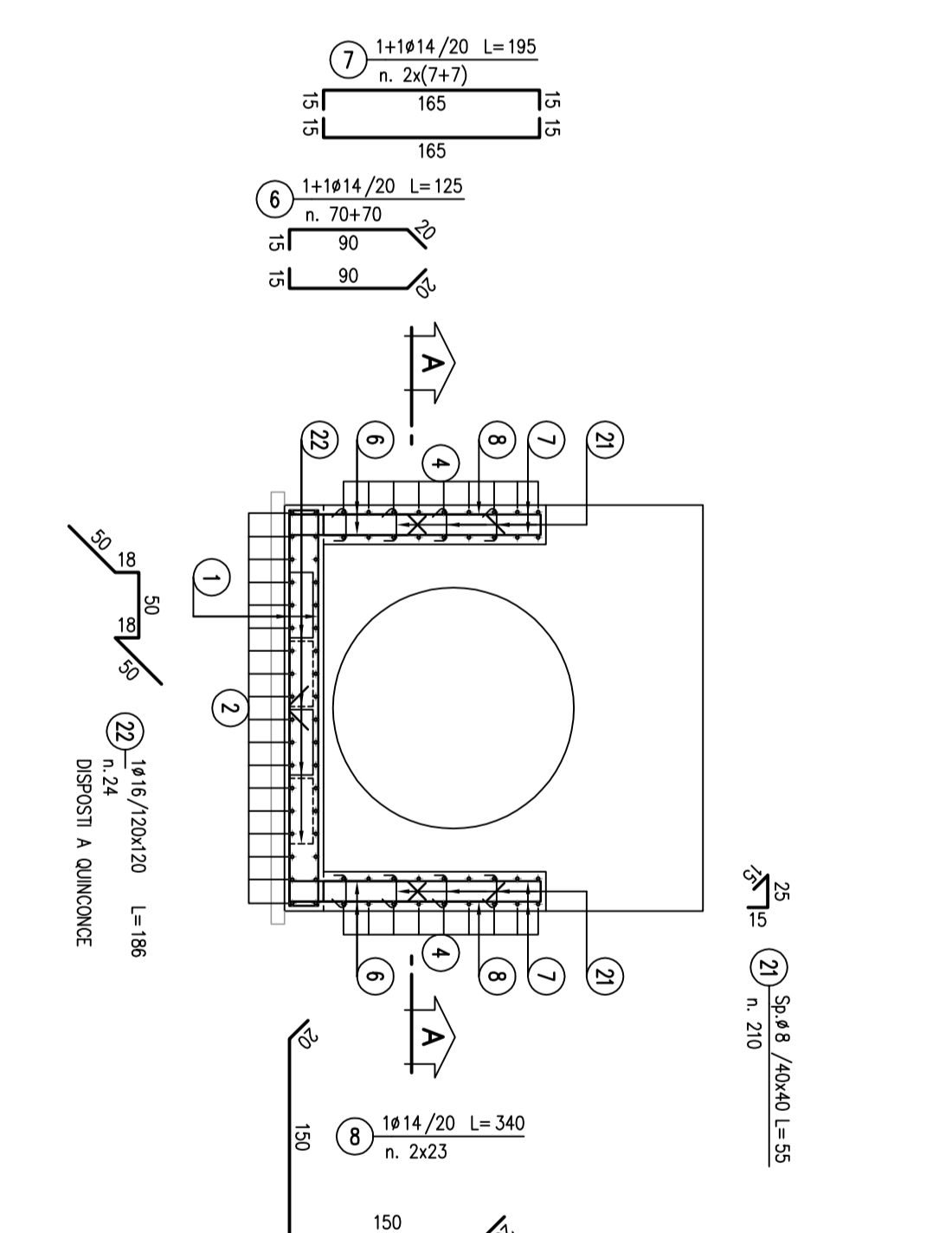
### SEZIONE A-A

SCALA 1:50



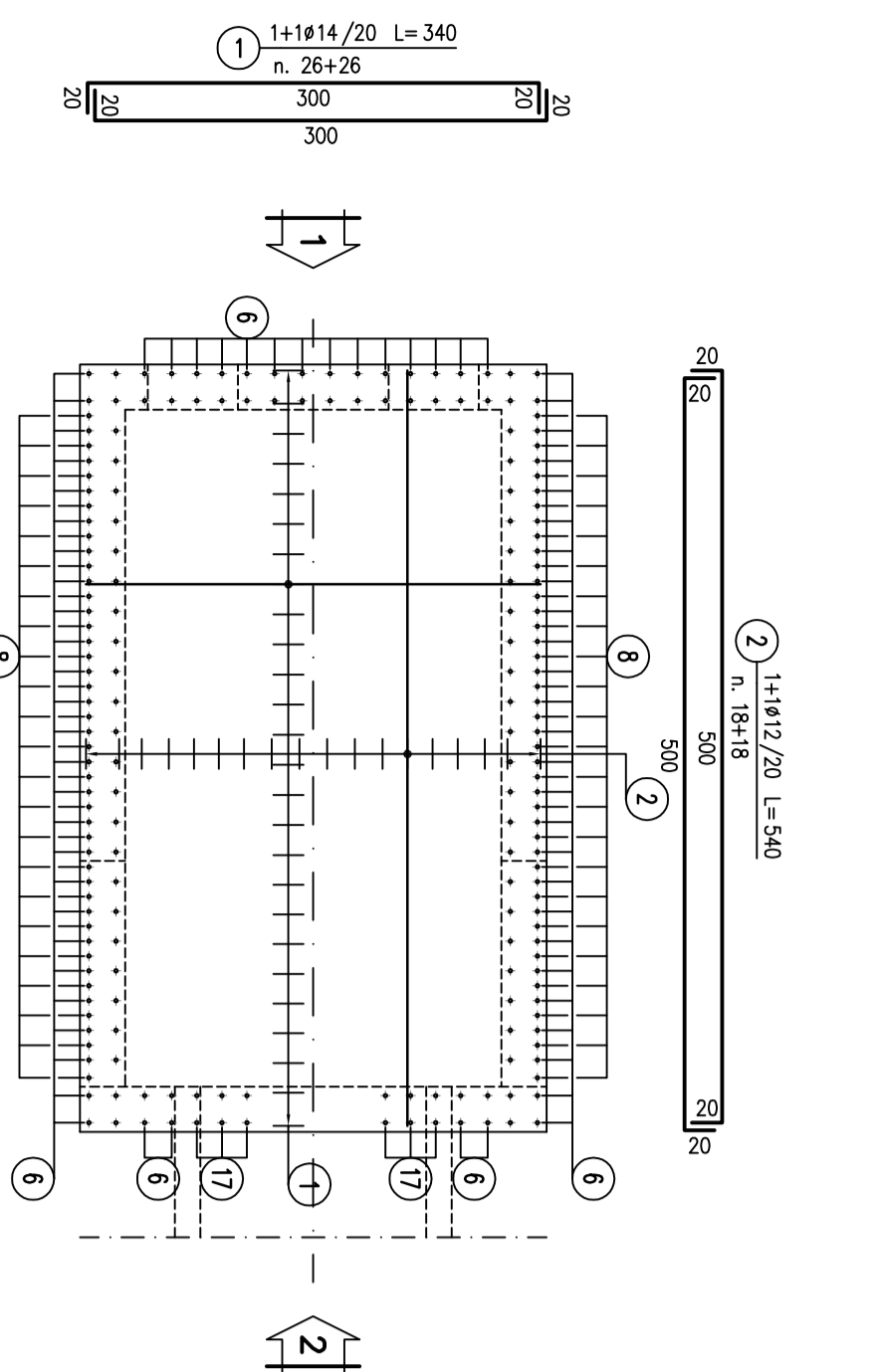
### SEZIONE B-B

SCALA 1:50



### PIANTA FONDAZIONE

SCALA 1:50

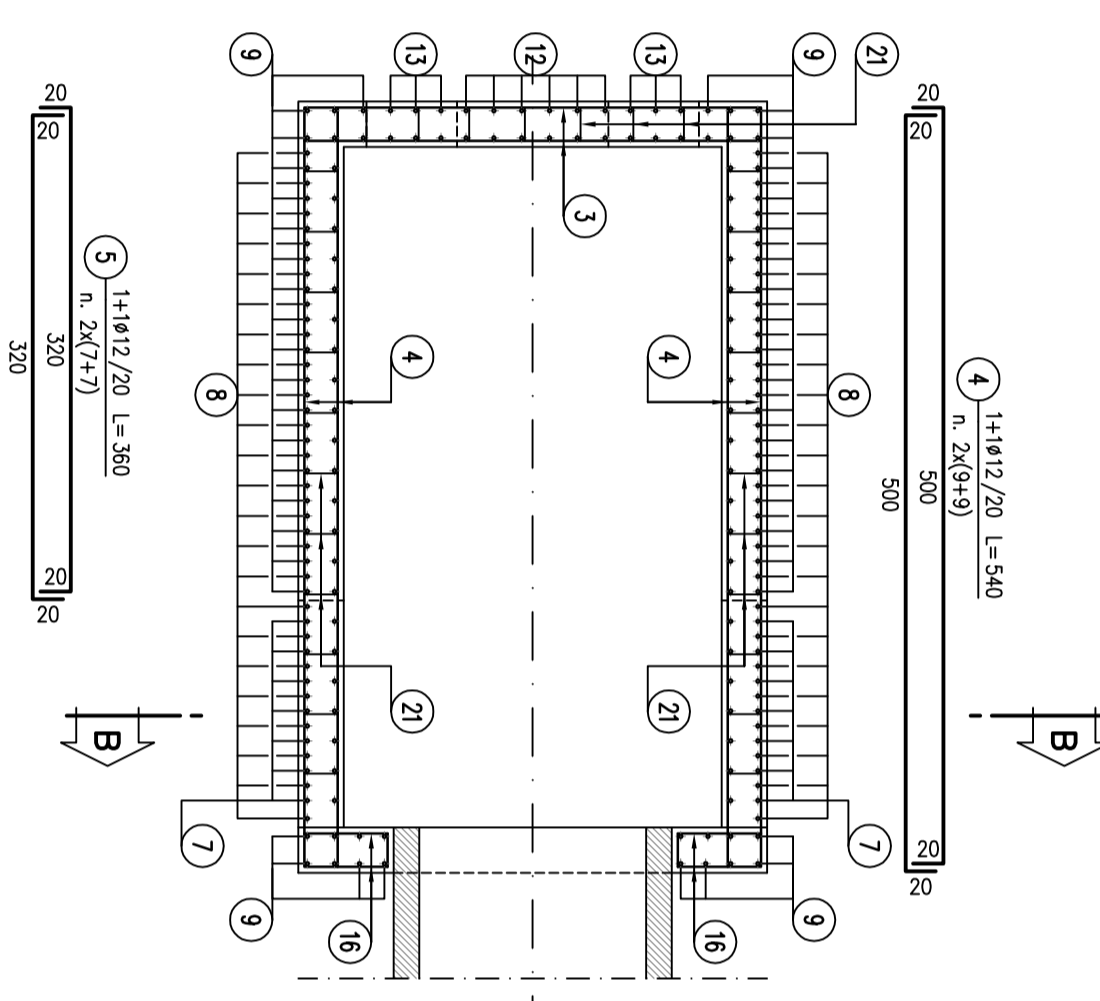


### MANUFATTO IMBOCCO

SCALA 1:50  
ARMA TURA

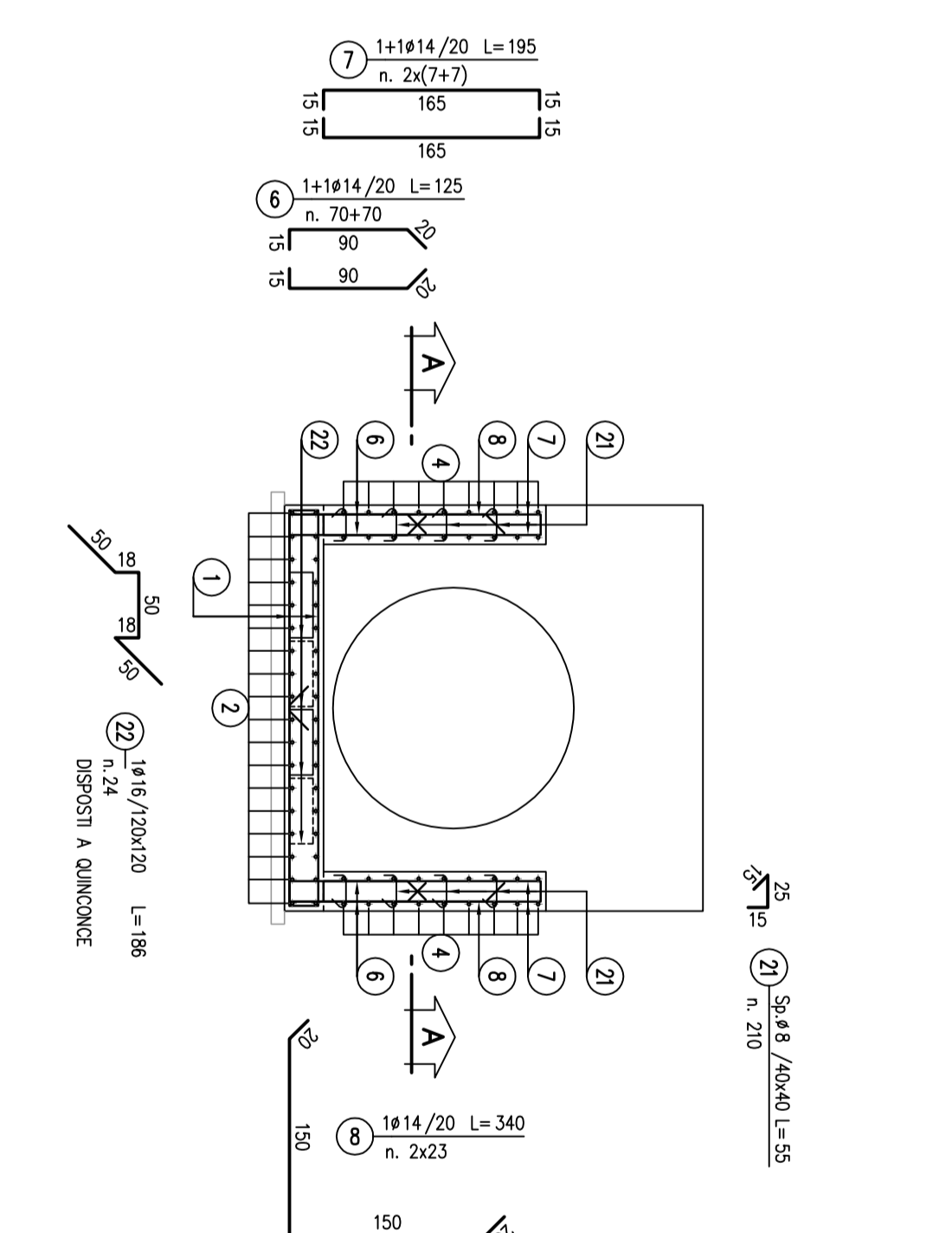
### SEZIONE A-A

SCALA 1:50



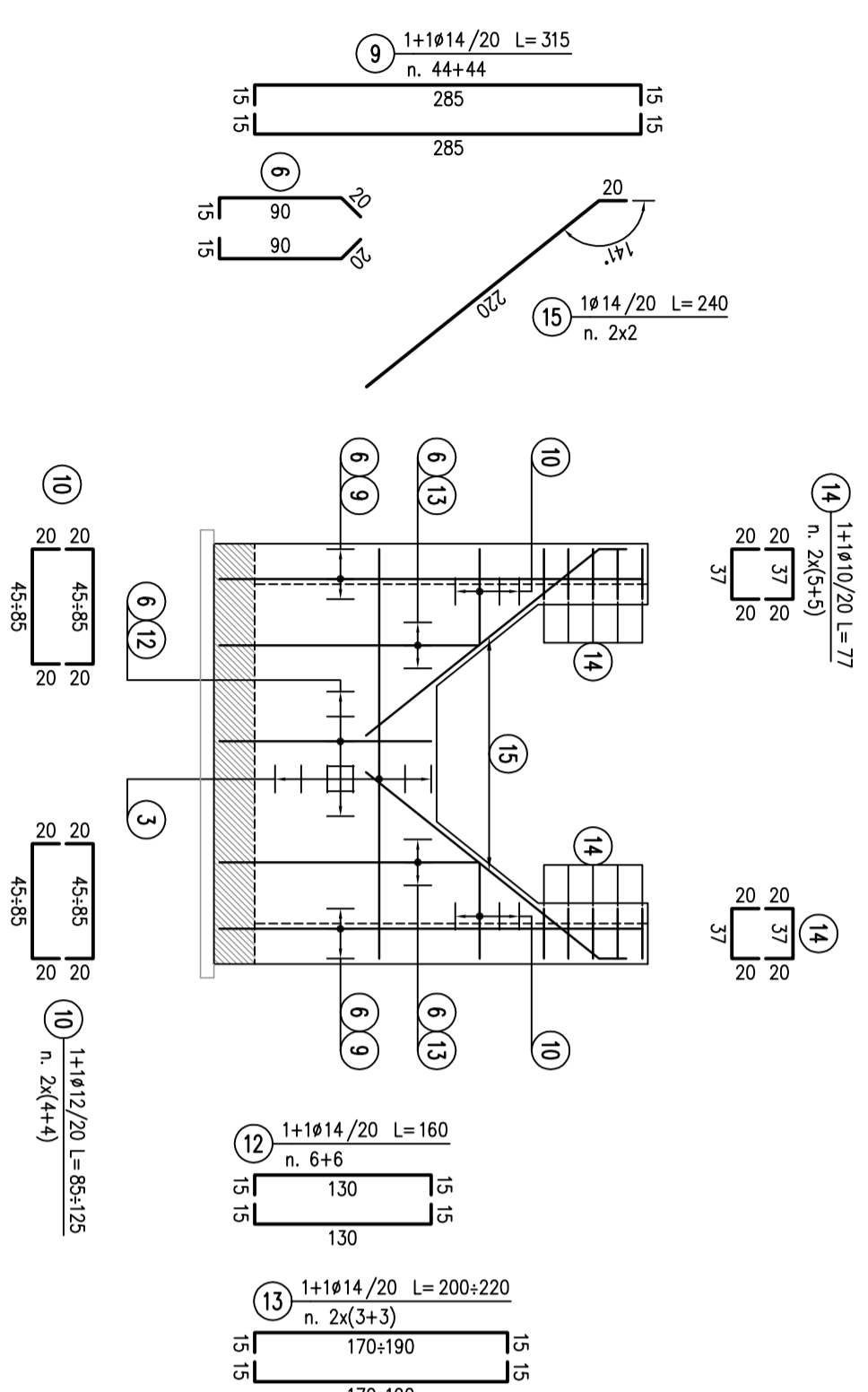
### SEZIONE B-B

SCALA 1:50



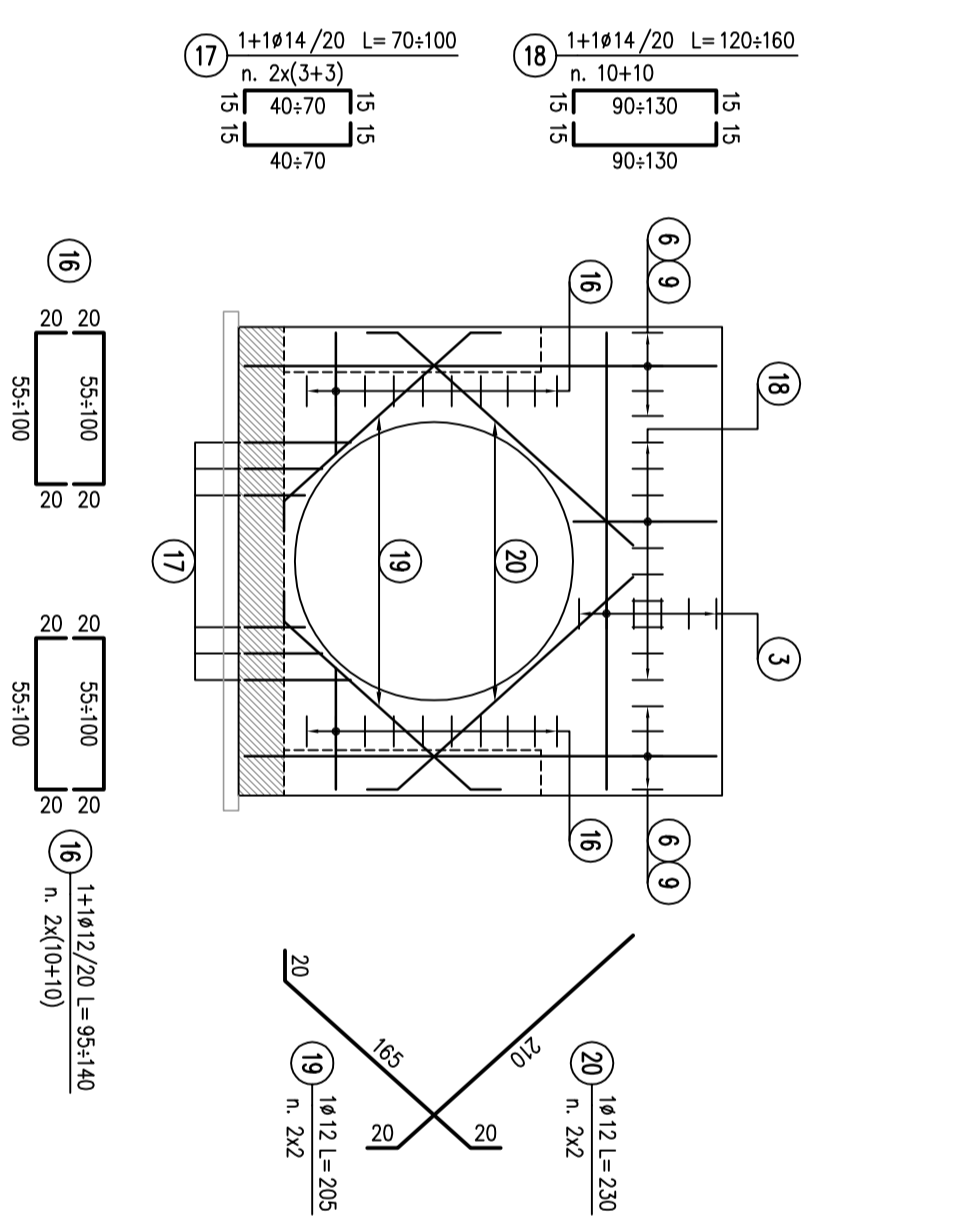
### VISTA 1

SCALA 1:50



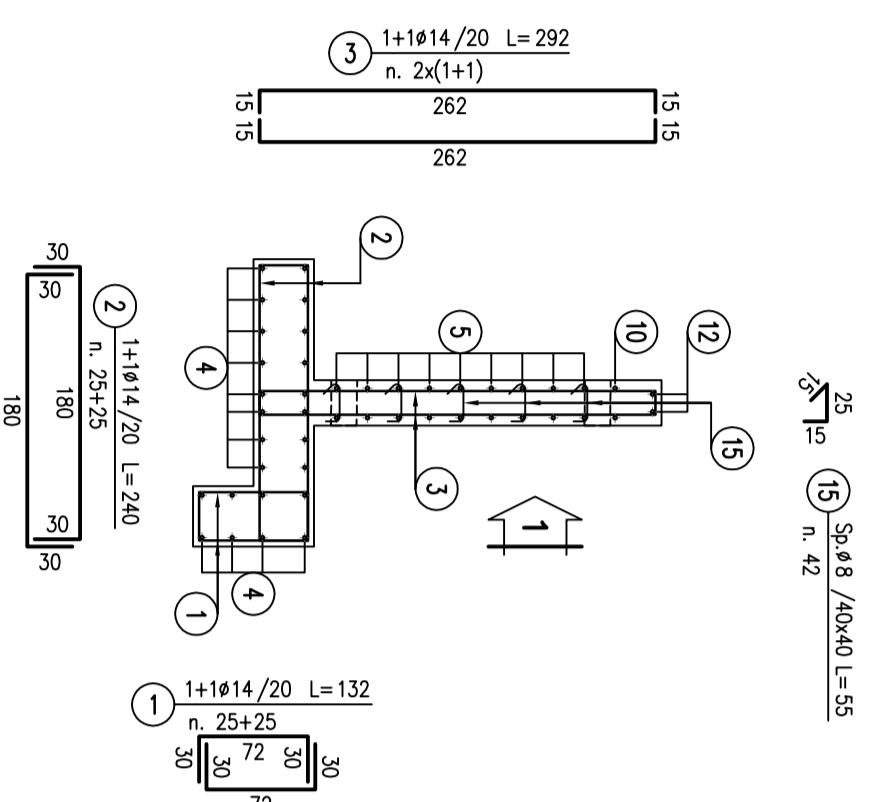
### VISTA 2

SCALA 1:50



### SEZIONE TRASVERSALE

SCALA 1:50

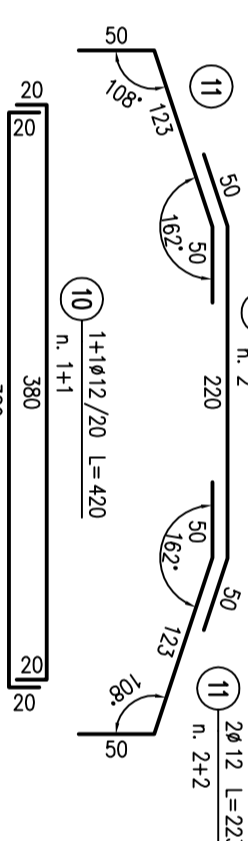


### MURO SBOCO

SCALA 1:50  
ARMA TURA

### VISTA 1

SCALA 1:50



### VISTA 2

SCALA 1:50

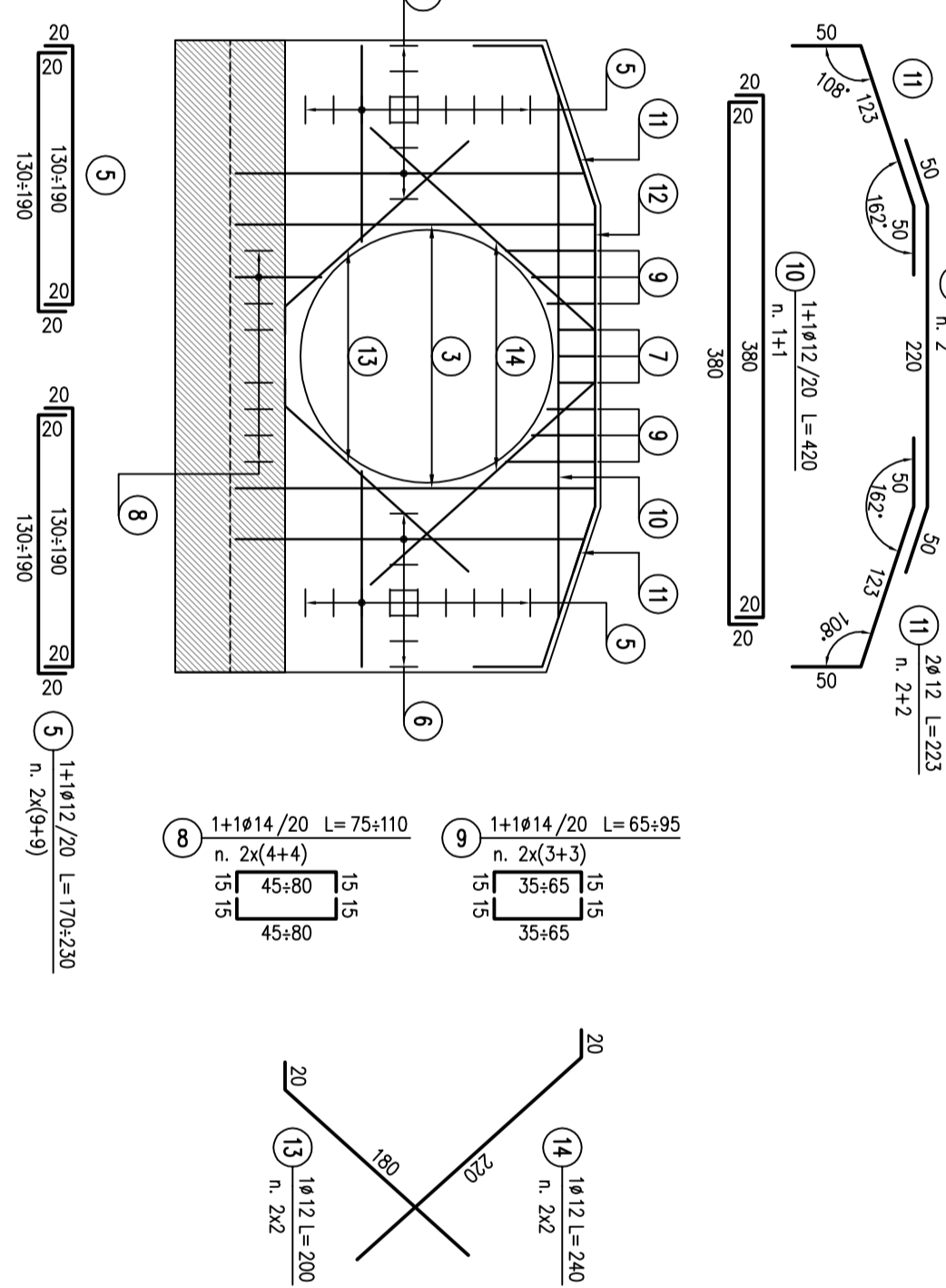


TABELLA FERRI				
MUR - FOSSO 3-2 - MANUFATTO IMBOCCO				
POS.	N.	DIAM.	LUNG.(cm)	PESO(Kg)
1	52	14	340	1.208
2	36	12	540	0.888
3	26	12	340	0.888
4	36	12	540	0.888
5	28	12	360	0.888
6	140	14	1.251	1.208
7	28	14	1.951	1.208
8	46	14	3.401	1.208
9	68	14	3.151	1.208
10	16	12	1.051	0.888
12	12	14	1.601	1.208
13	12	14	2.101	1.208
14	20	10	7.71	0.617
15	4	14	2.401	1.208
16	40	12	1.181	0.888
17	12	14	8.51	1.208
18	20	14	1.401	1.208
19	4	12	2.051	0.888
20	4	12	2.201	0.888
21	210	8	5.51	0.395
22	24	16	1.961	1.578
PESO TOTALE				1837

TABELLA FERRI				
MUR - FOSSO 3-2 - MURO SBOCO				
POS.	N.	DIAM.	LUNG.(cm)	PESO(Kg)
1	50	14	1.321	1.208
2	50	14	2.401	1.208
3	4	14	2.921	1.208
4	24	12	5.001	0.888
5	36	12	2.001	0.888
6	28	14	2.721	1.208
7	6	8	5.71	0.395
8	16	14	9.31	1.208
9	12	14	8.01	1.208
10	2	12	4.201	0.888
11	4	12	2.231	0.888
12	2	12	3.201	0.888
13	4	12	2.001	0.888
14	4	12	2.401	0.888
15	42	8	5.51	0.395
PESO TOTALE				578

**NOTE:**  
Per la tabella materiali si fa riferimento all'elaborato IG51-00-E-TT-0000-00-001.

**COMMITTENTE:**



**ALTA Sorveglianza:**



**GENERAL CONTRACTOR:**



INFRASTRUTTURE FERROVIARIE STRATEGICHE DEFINITE DALLA LEGGE OBIETTIVO N.443/01  
TRATTA A.V.A.C. TERZO VALICO DEI GIOVI  
PROGETTO ESECUTIVO

SISTEMAZIONE IDRAULICA FOSSO 3 - LIBARNA  
TOMBINO F1500 FOSSO 3-2  
Armatura

GENERAL CONTRACTOR	DIRETTORE LAVORI	SCALA
Costruzione <b>Cociv</b> Ing. P. Marcheselli		1:50

COMMESSA	LOTTO	FASE	ENV	TIPO DOC.	OPERAZIONE/PUNTA	PROGR.	REV.
IG51	02	E	CV	BB	IN1U0X	001	A
PROGETTAZIONE							
Rev.	Distribuzione emissione	Realizzo	ALPMA	CCCV	27/09/2013	27/09/2013	A. Padellaro
ADD	Prima emissione						