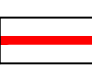
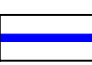
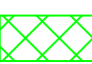
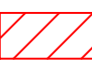
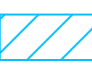
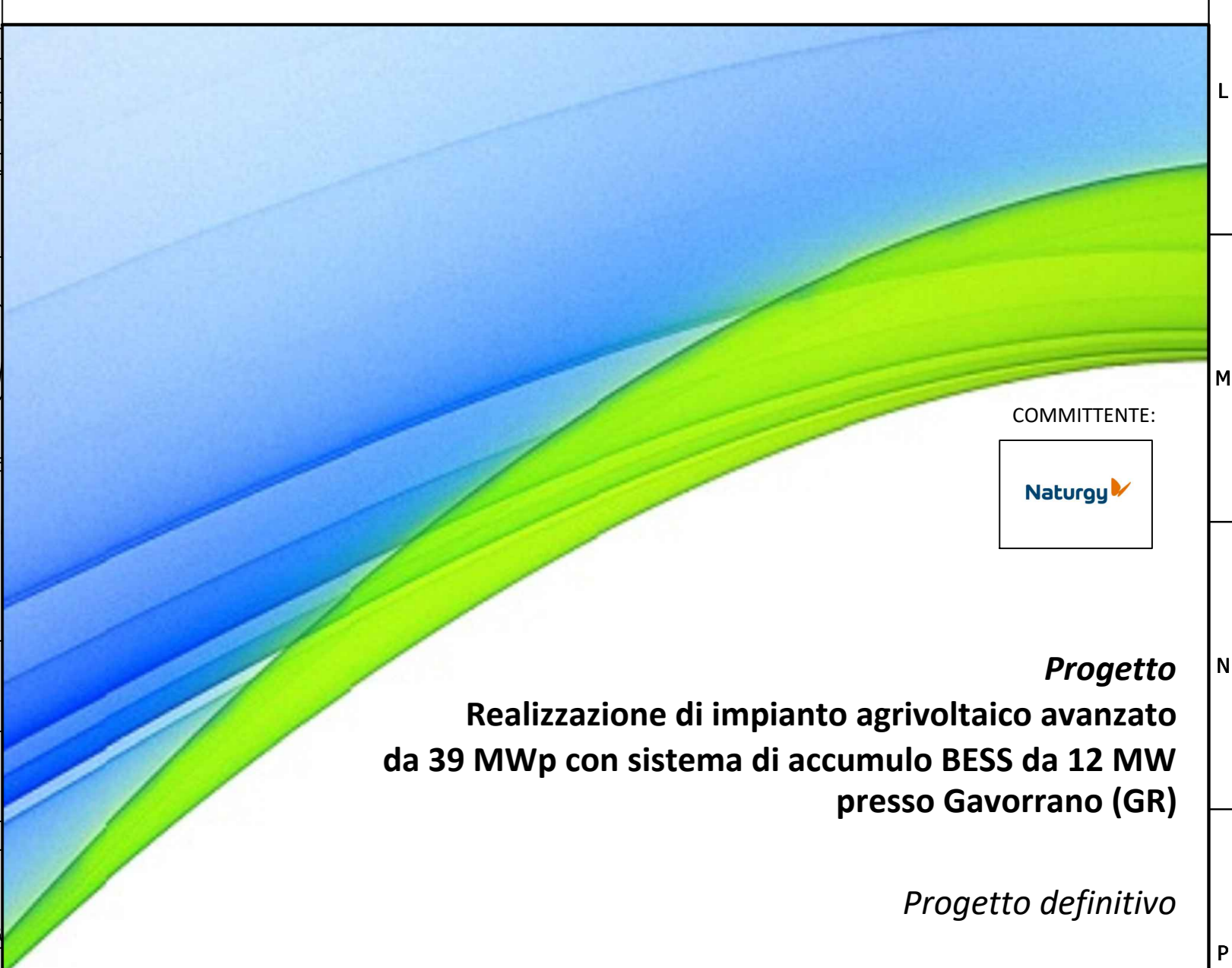
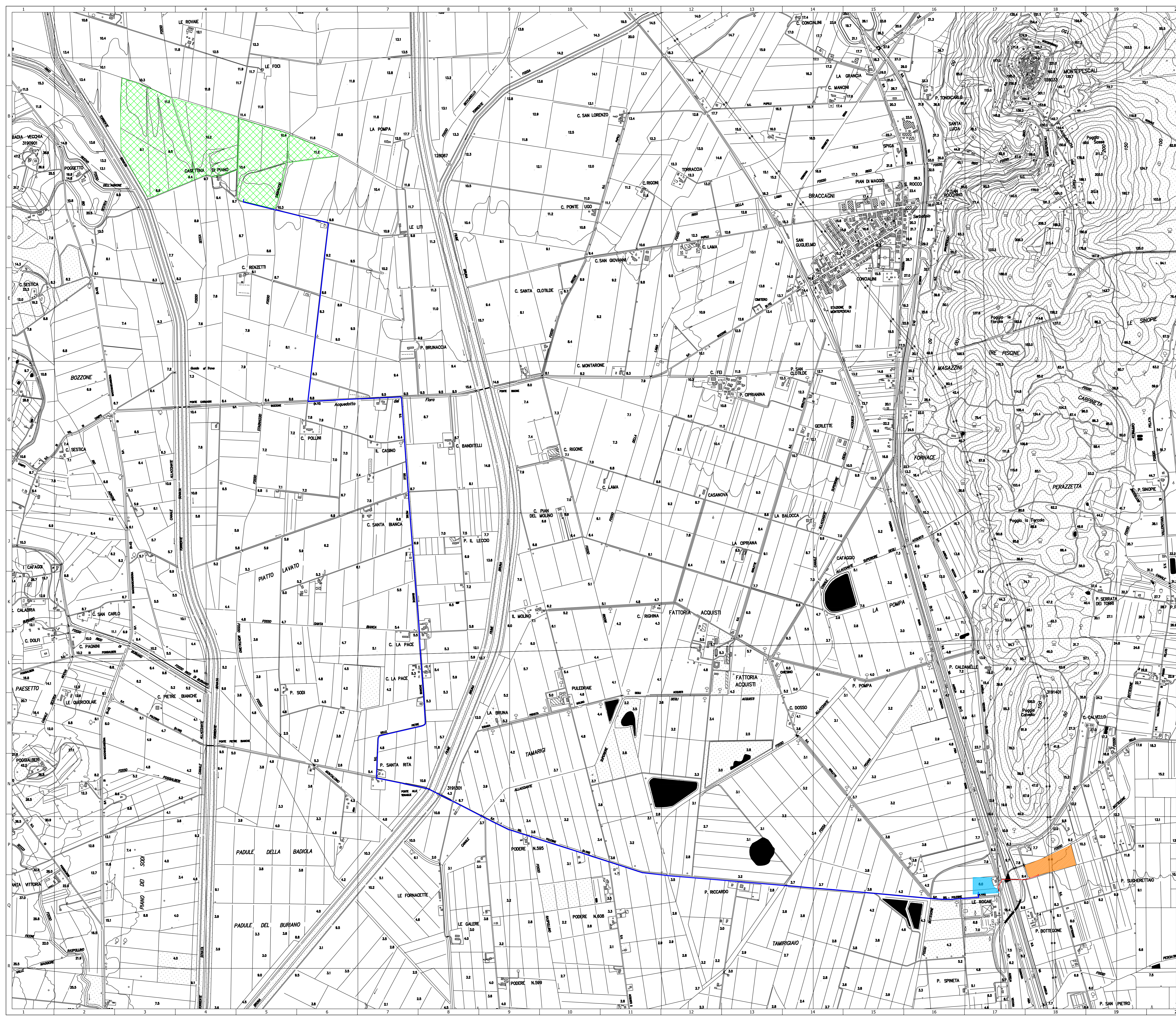
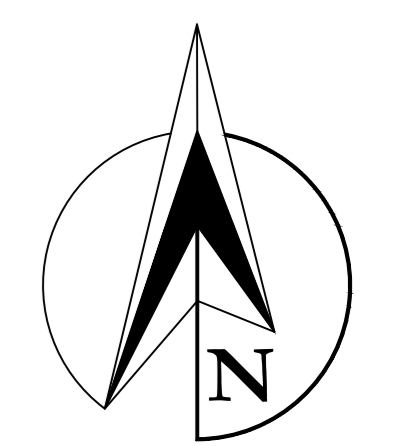


LEGENDA

-  Cavo AT interrato 132 kV
-  Cavo MT interrato 30 kV
-  Area impianto
-  SSE
-  Area impianto BESS



Progetto
Realizzazione di impianto agrivoltaco avanzato
da 39 MWp con sistema di accumulo BESS da 12 MW
presso Gavorrano (GR)

Progetto definitivo

NAT02_PD_PEC_TAV01
Inquadramento territoriale su CTR

COMMESSA	LIVELLO	AMB.	ELAB.	N.	NOME FILE	FORMATO	SCALA
NAT02	PD	PEC	TAV	01	NAT02_PD_PEC_TAV01	A0	1:8000
REV	DATA	REDAZIONE	VERIFICA	APPROVAZIONE	VERIFICAZIONE	DESCRIZIONE	
0	Maggio 2024	F. Manoni	L. Nigro	M.I. Gianni	VERIFICATO	Consegna Progetto Definitivo	
1							
2							
3							