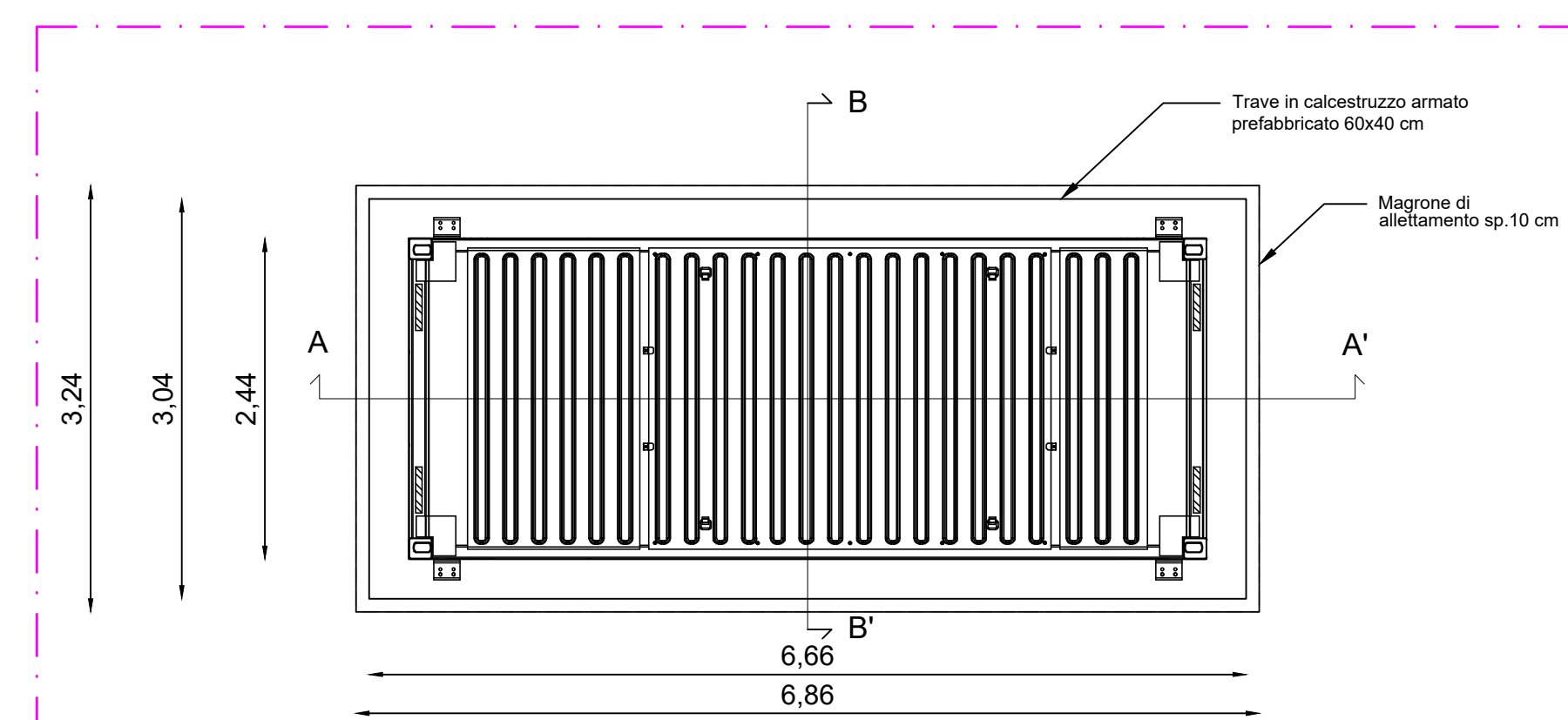
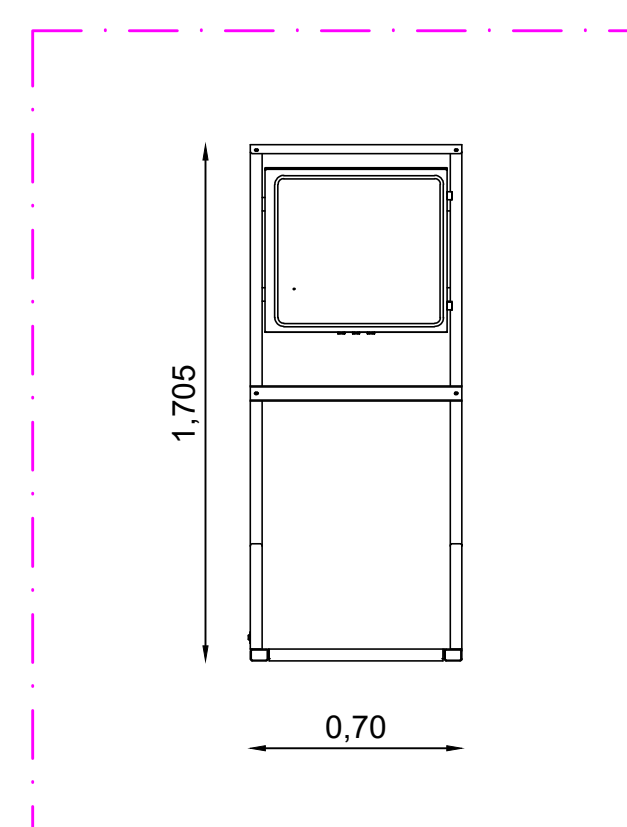


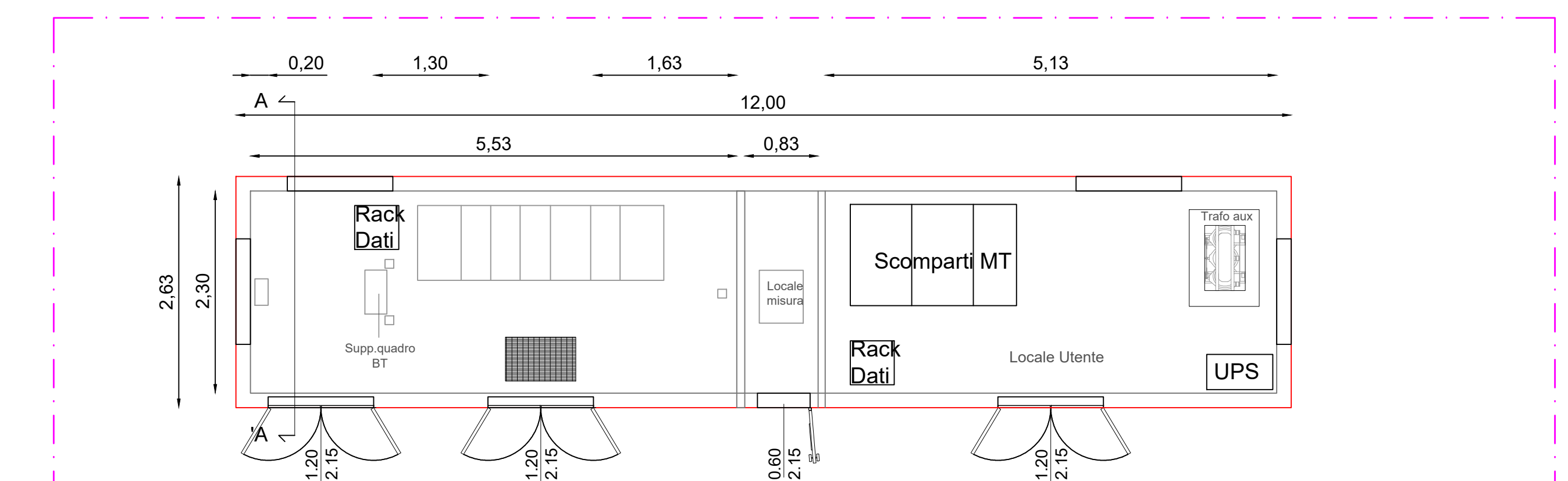
Planimetria container BESS
Scala 1:50



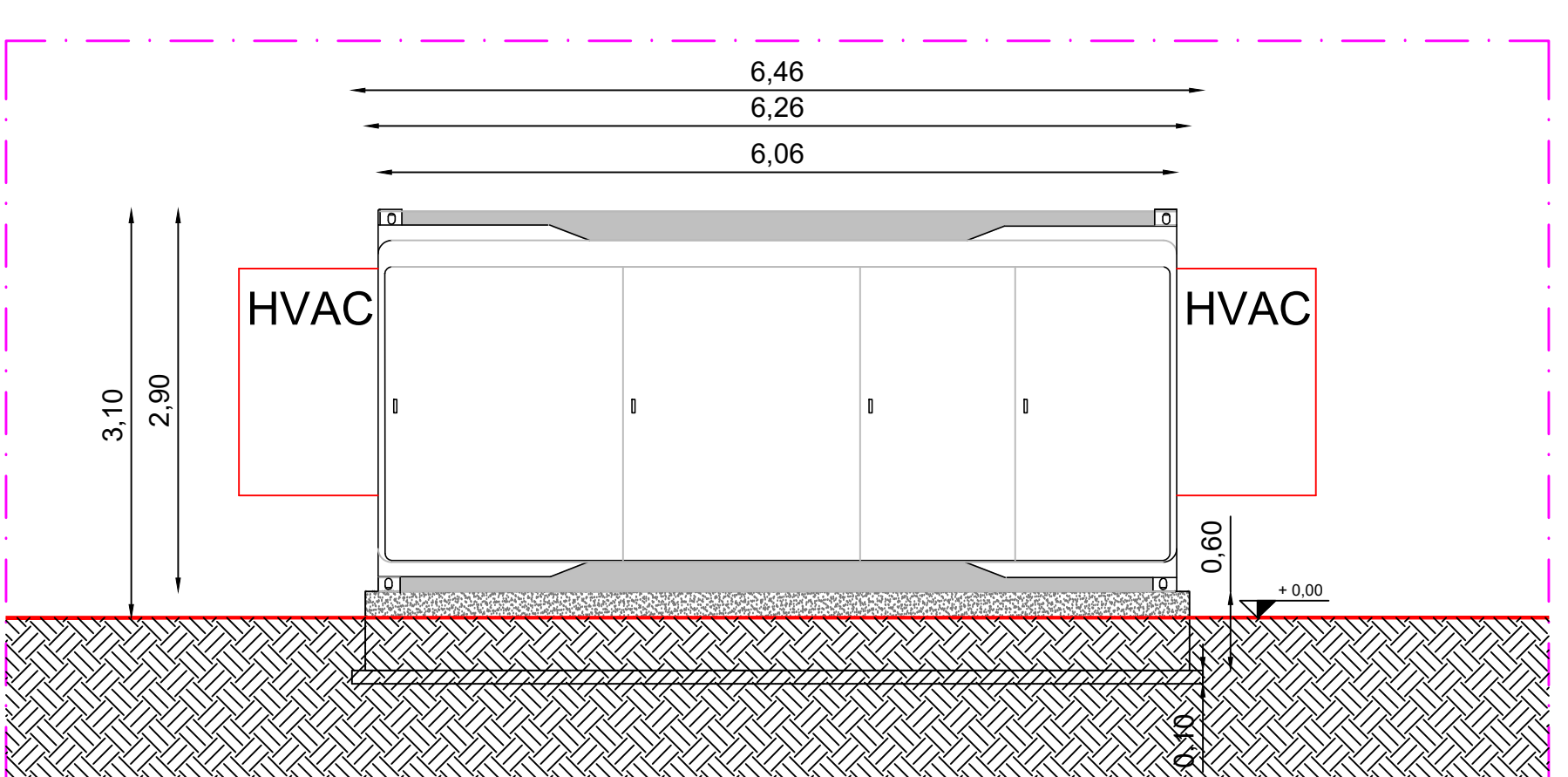
Planimetria Power Conversion System
Scala 1:50



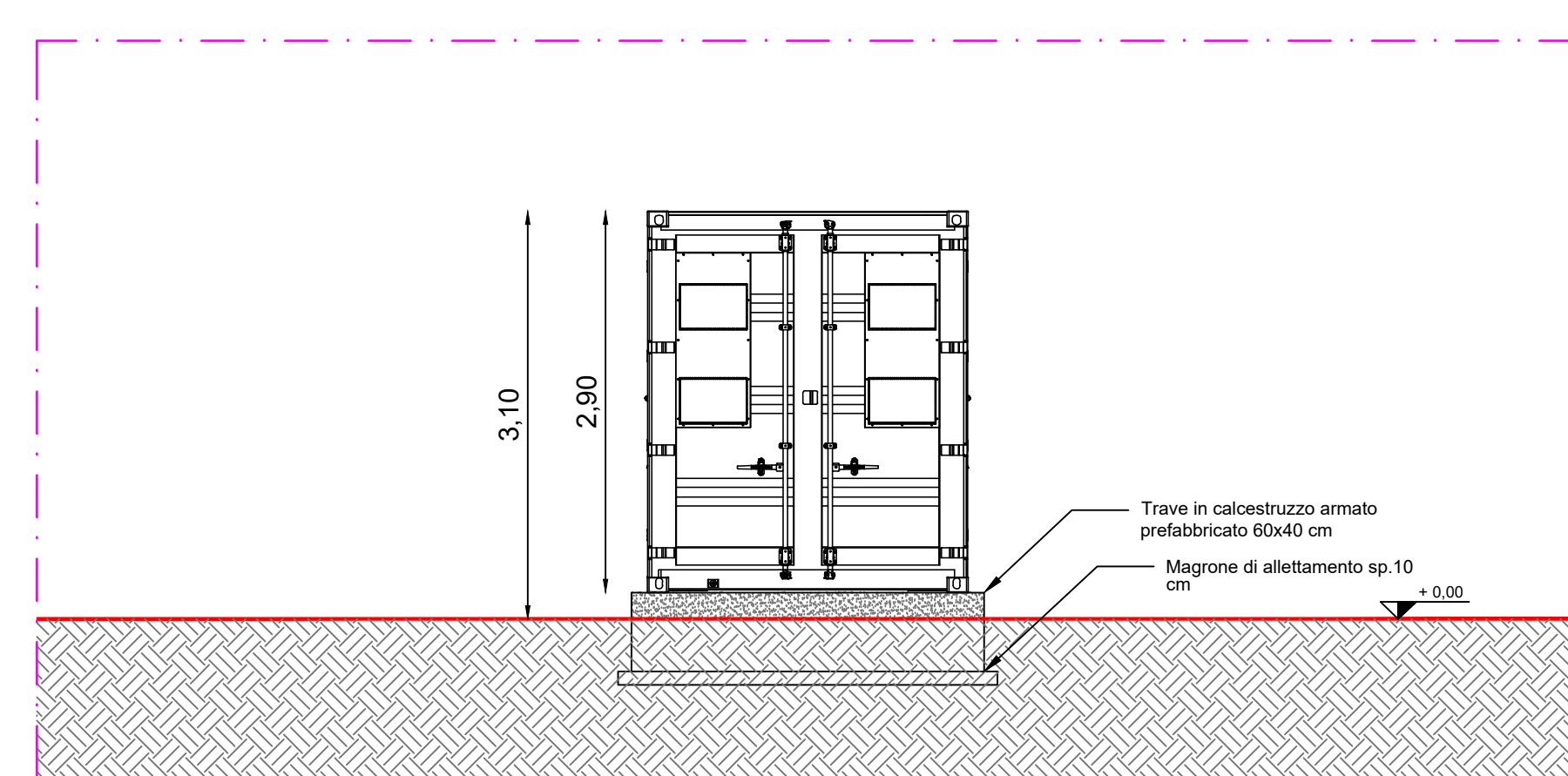
Local controller
Scala 1:50



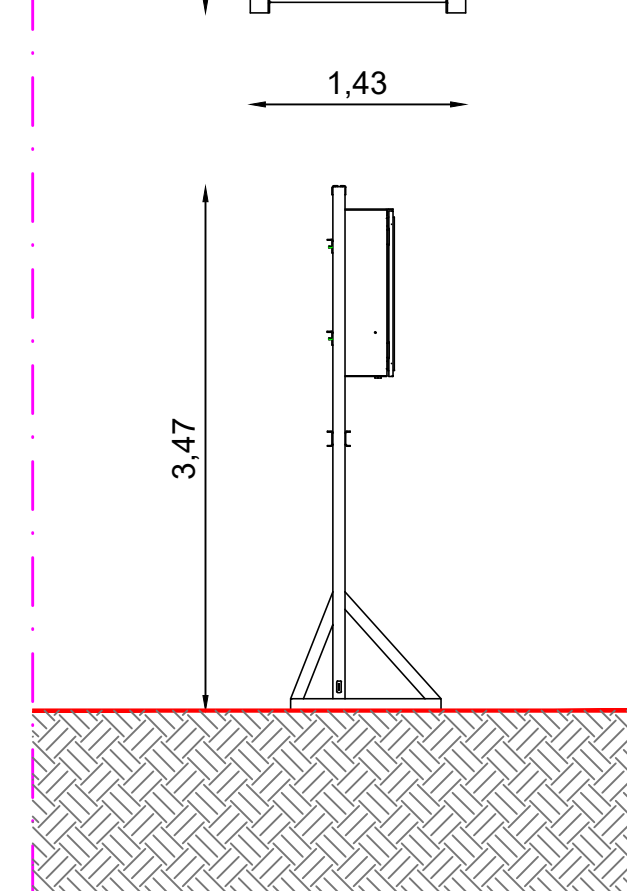
Planimetria cabina di Raccolta
Scala 1:100



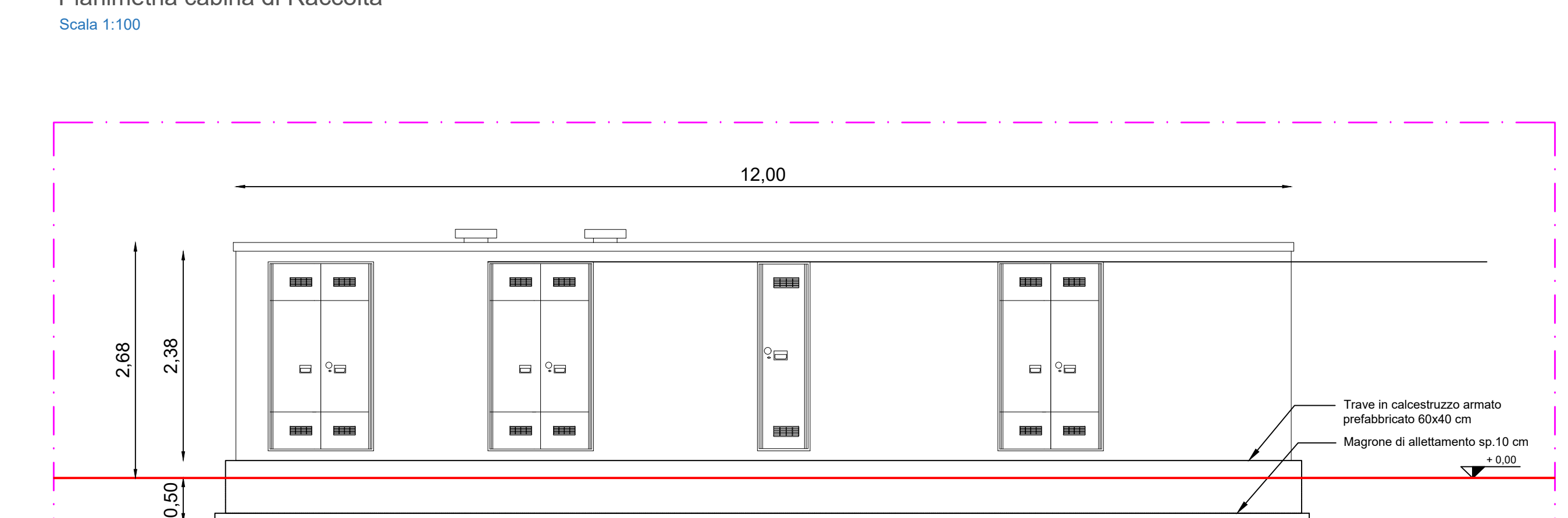
Prospetto frontale container BESS
Scala 1:50



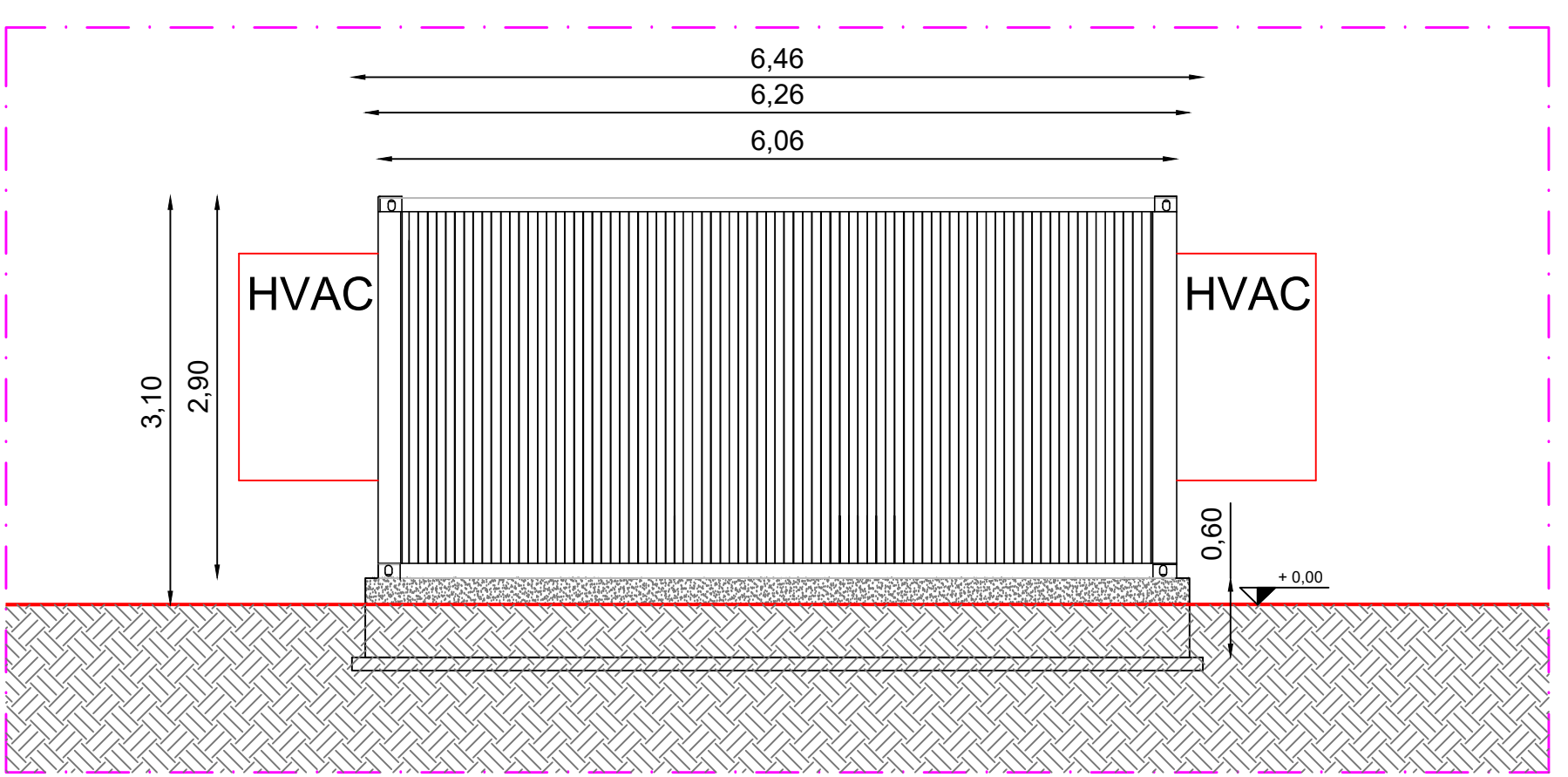
Prospetto laterale sinistro Power Conversion System
Scala 1:50



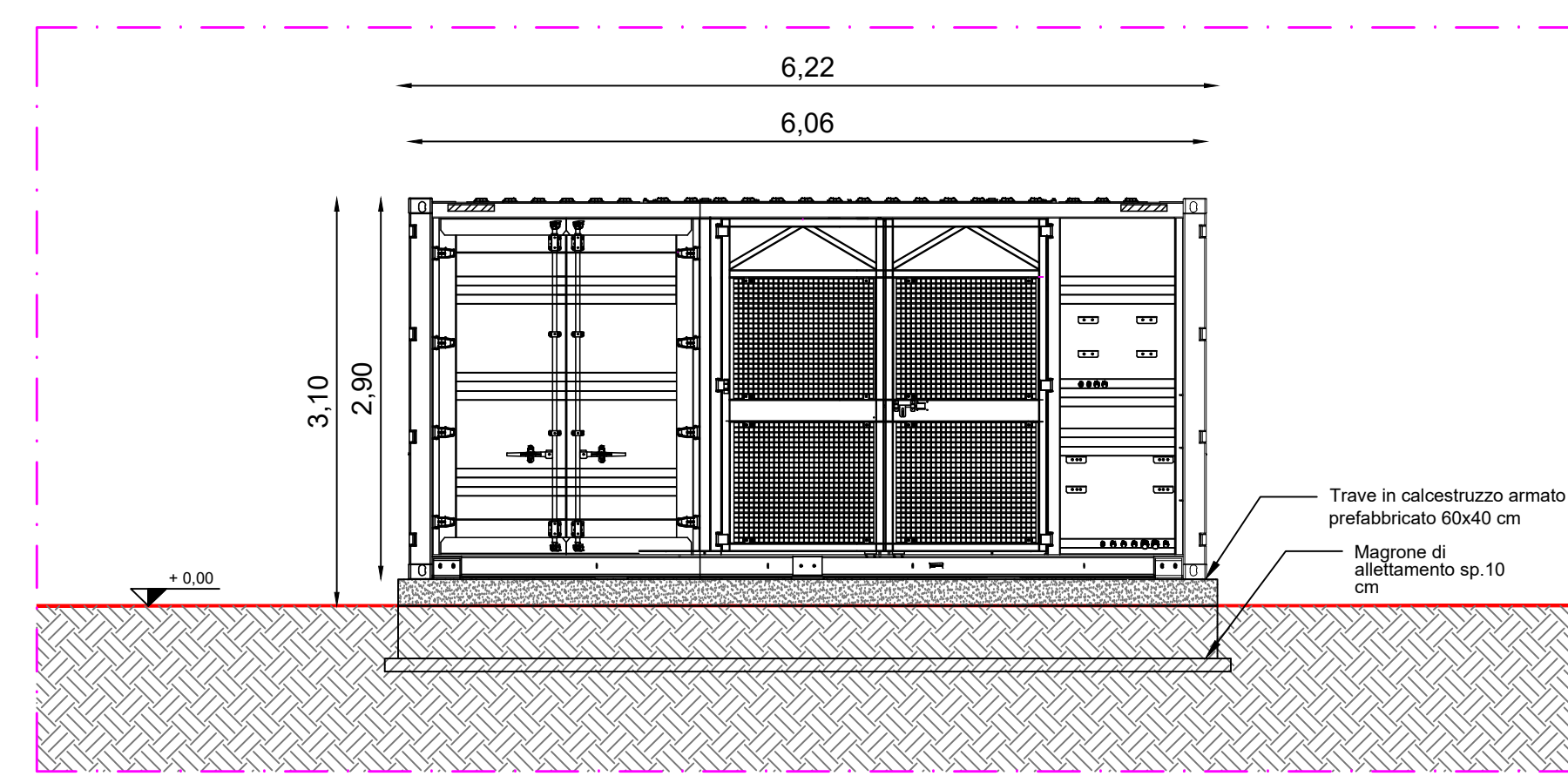
Local controller
Scala 1:50



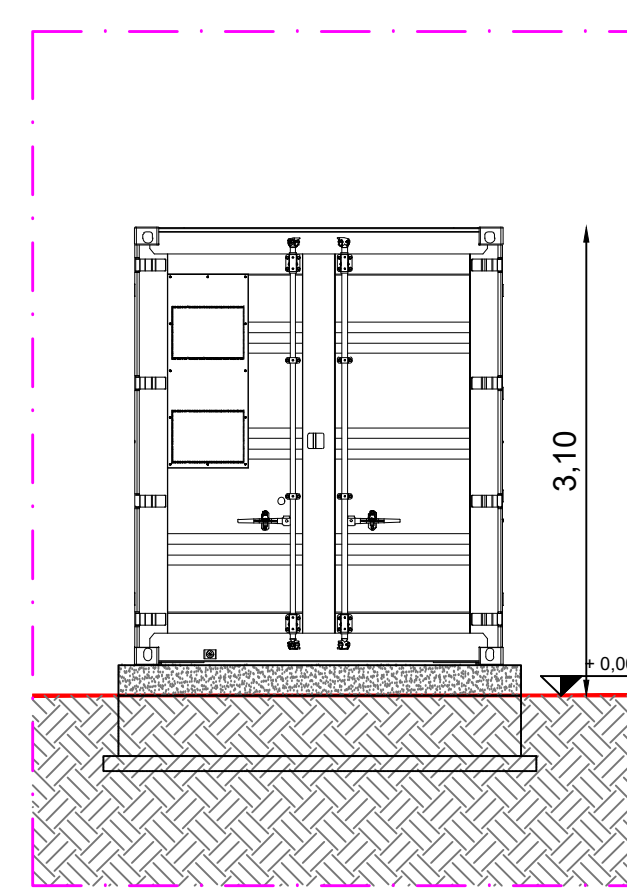
Prospetto lato lungo - Cabina di Raccolta
Scala 1:100



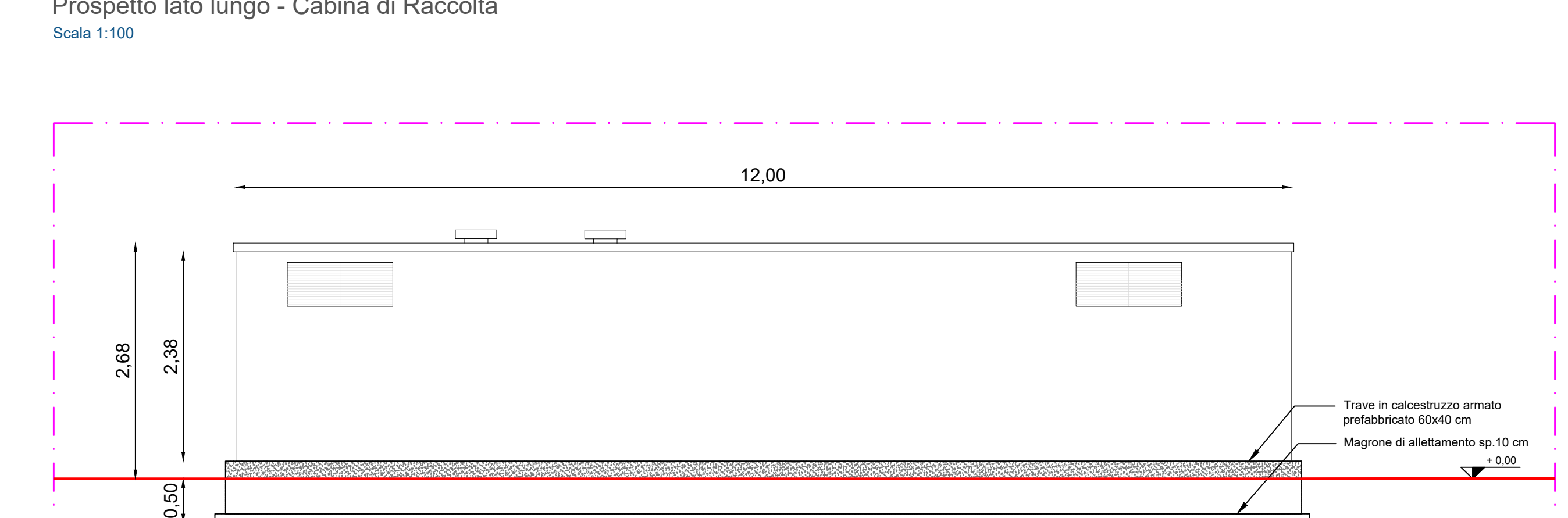
Prospetto retro container BESS
Scala 1:50



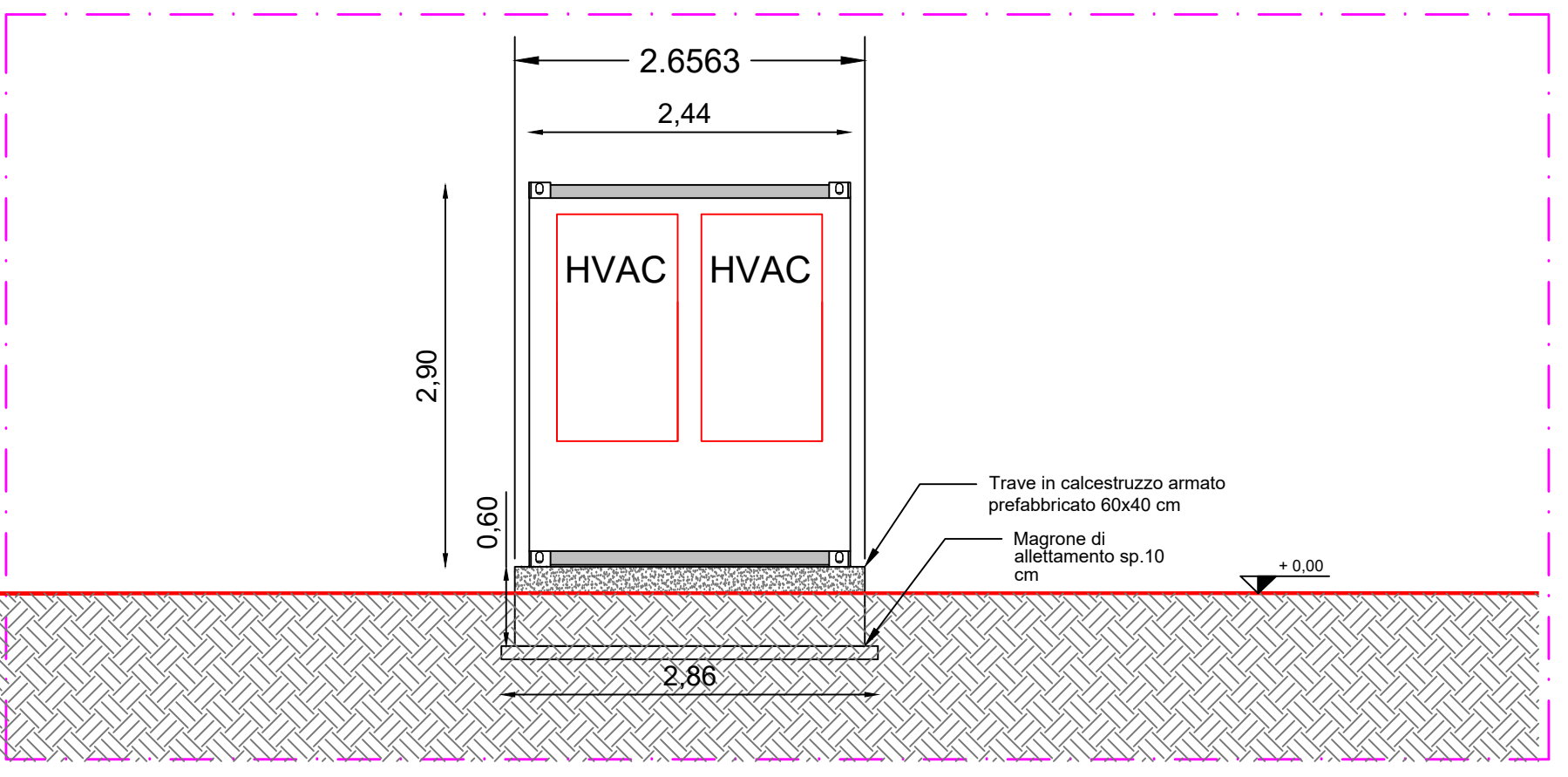
Prospetto frontale Power Conversion System
Scala 1:50



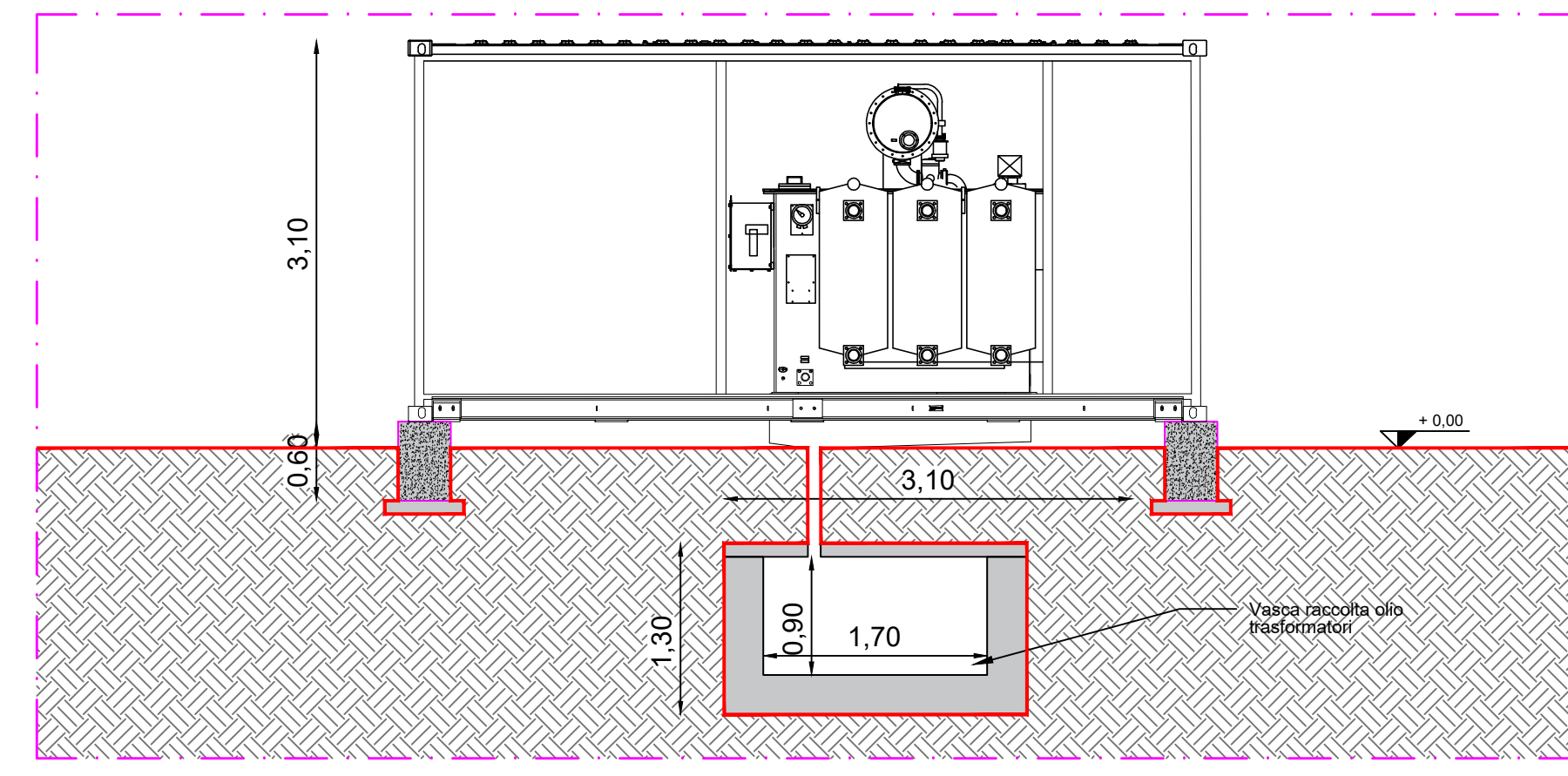
Prospetto laterale destro Power Conversion System
Scala 1:50



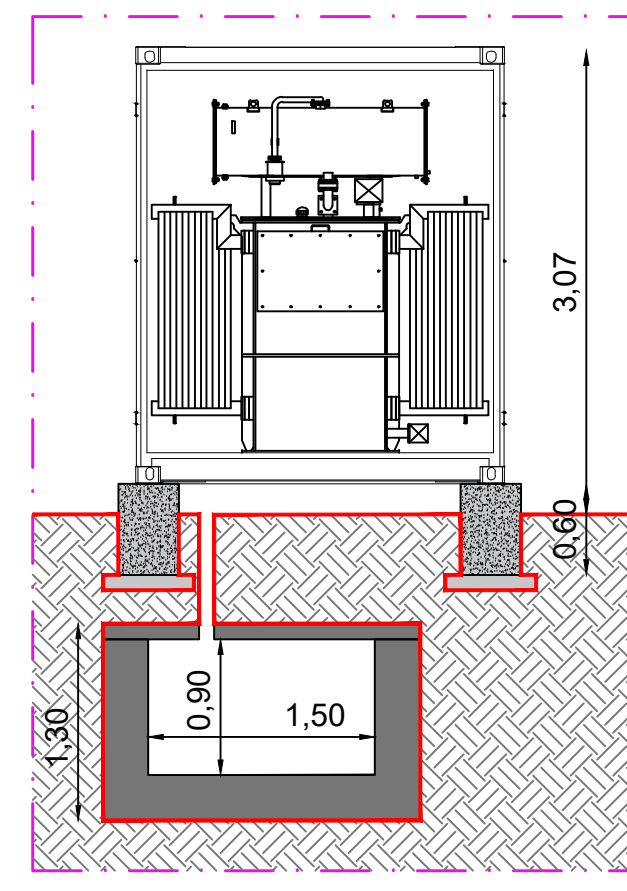
Prospetto lato lungo - Cabina di Raccolta
Scala 1:100



Prospetto laterale container BESS
Scala 1:50



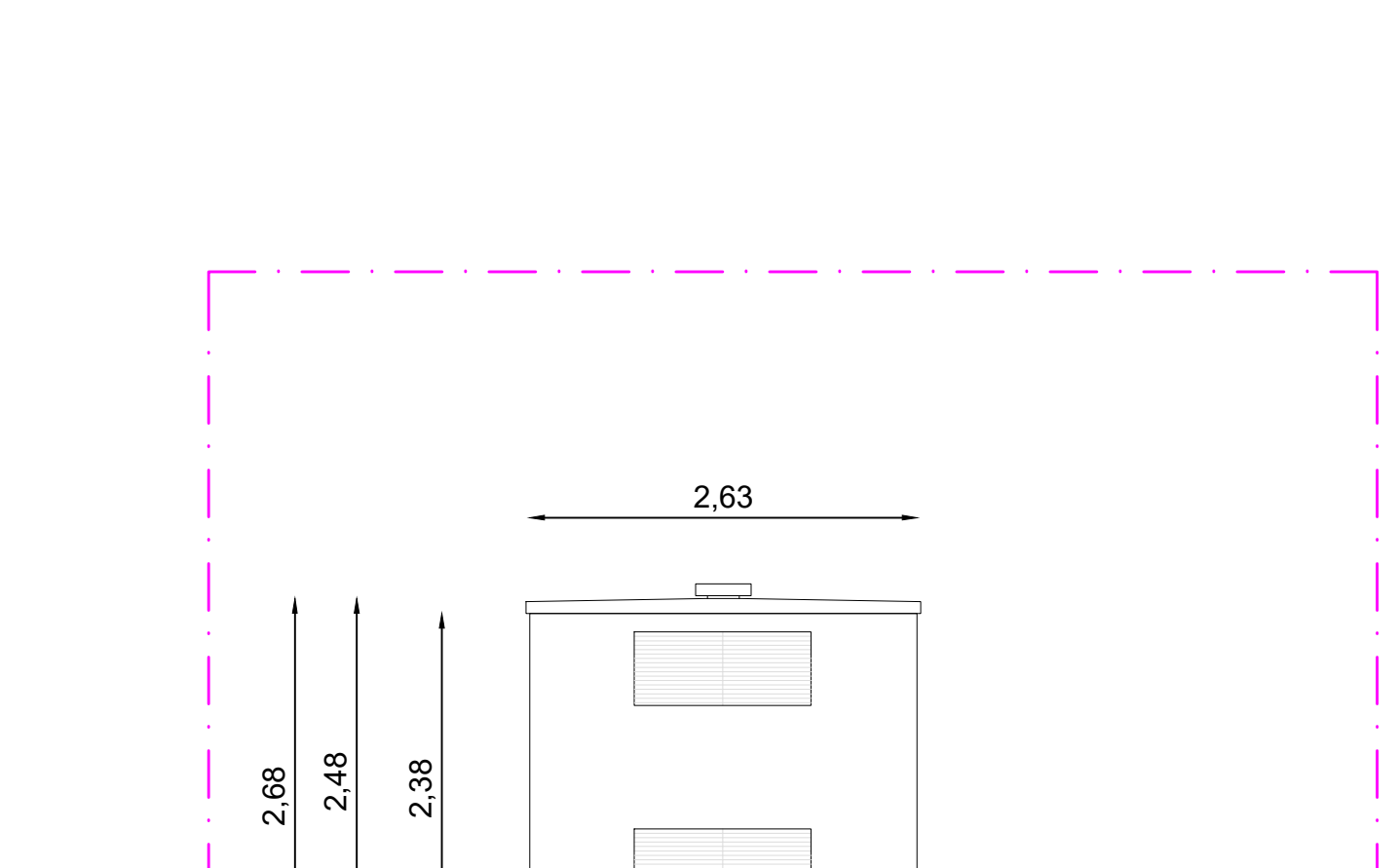
Sezione A-A' Power Conversion System
Scala 1:50



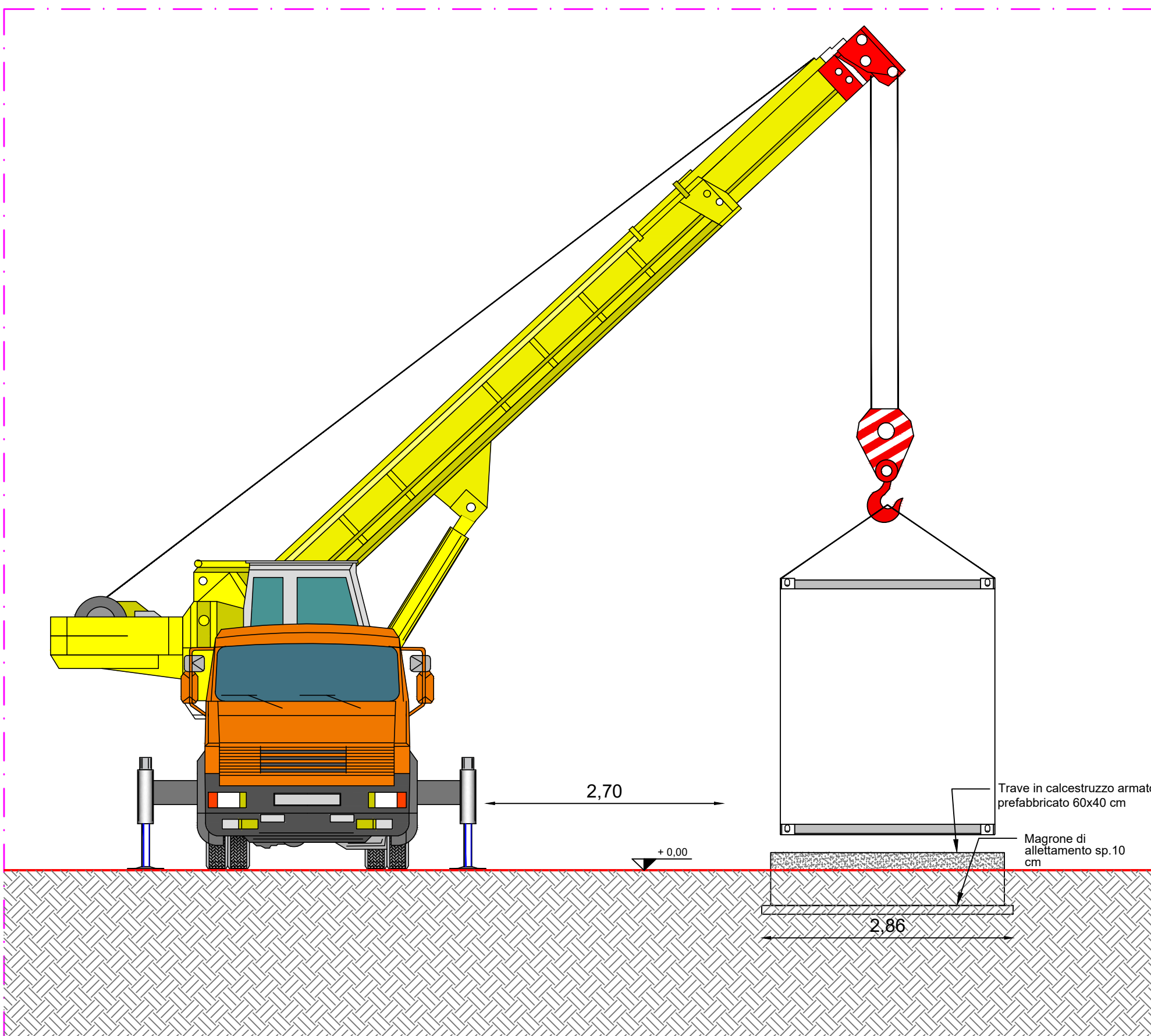
Sezione B-B' Power Conversion System
Scala 1:50



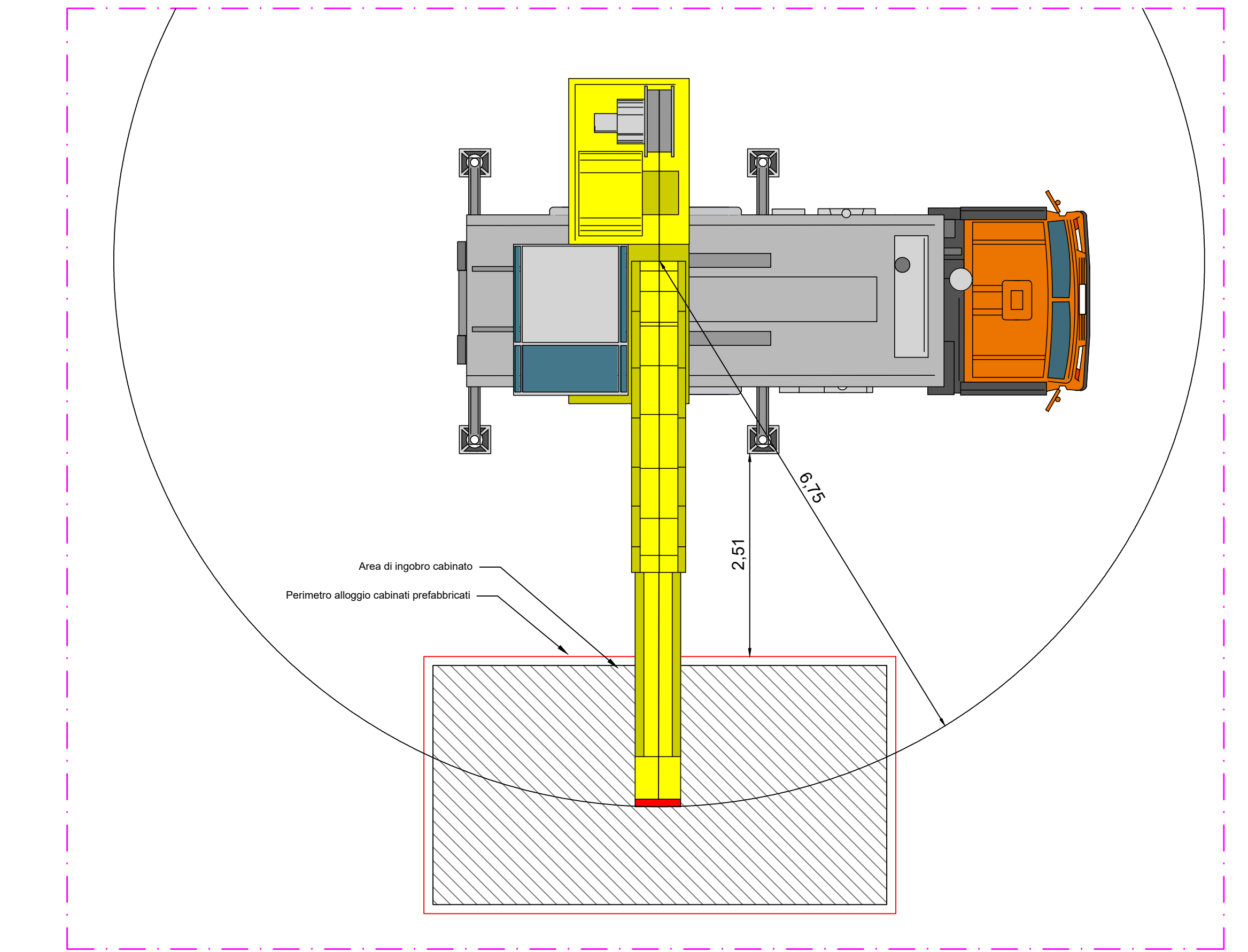
Sezione A-A' - Cabina di Raccolta
Scala 1:100



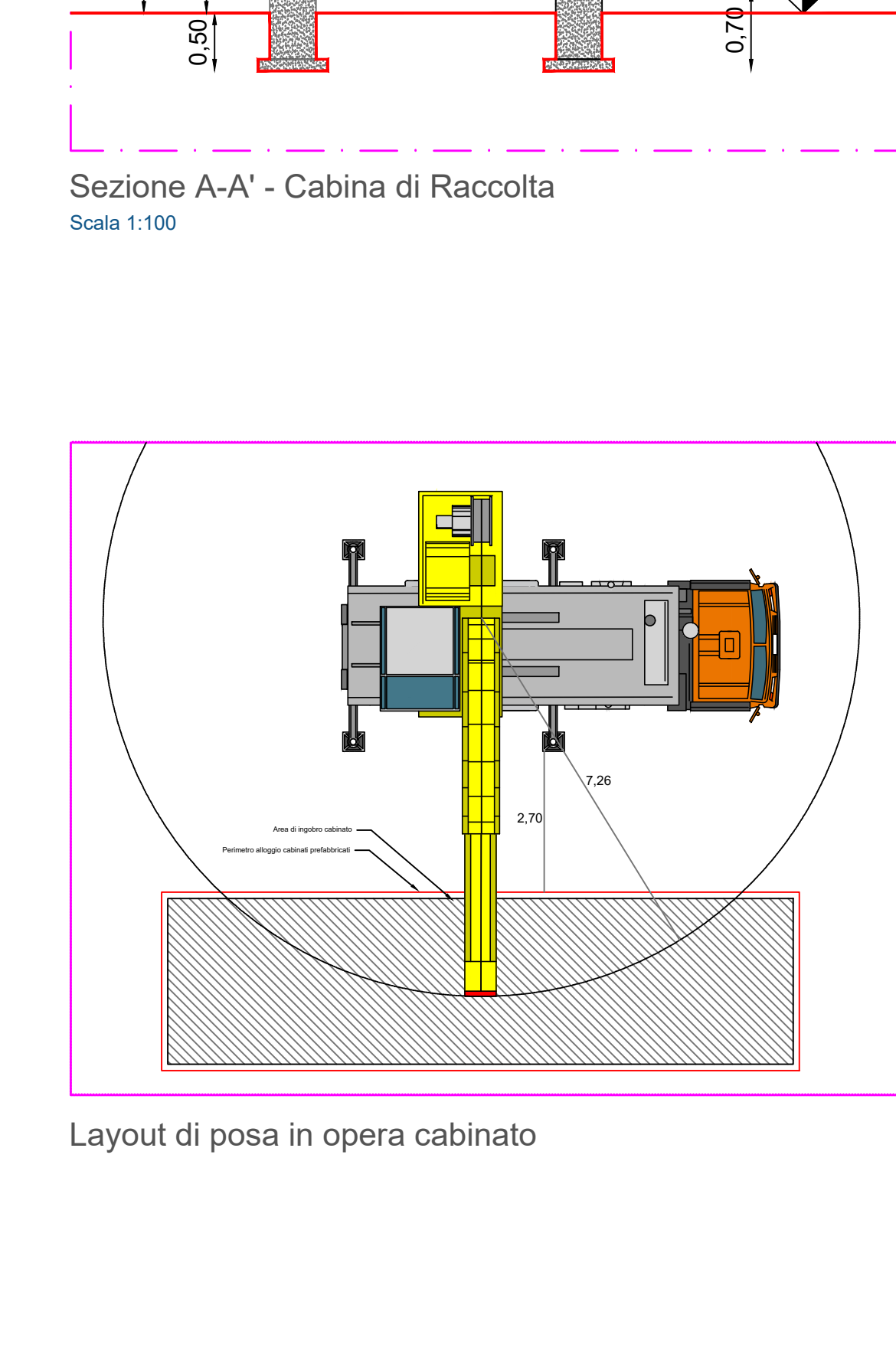
Prospetto lato corto - Cabina di Raccolta
Scala 1:100



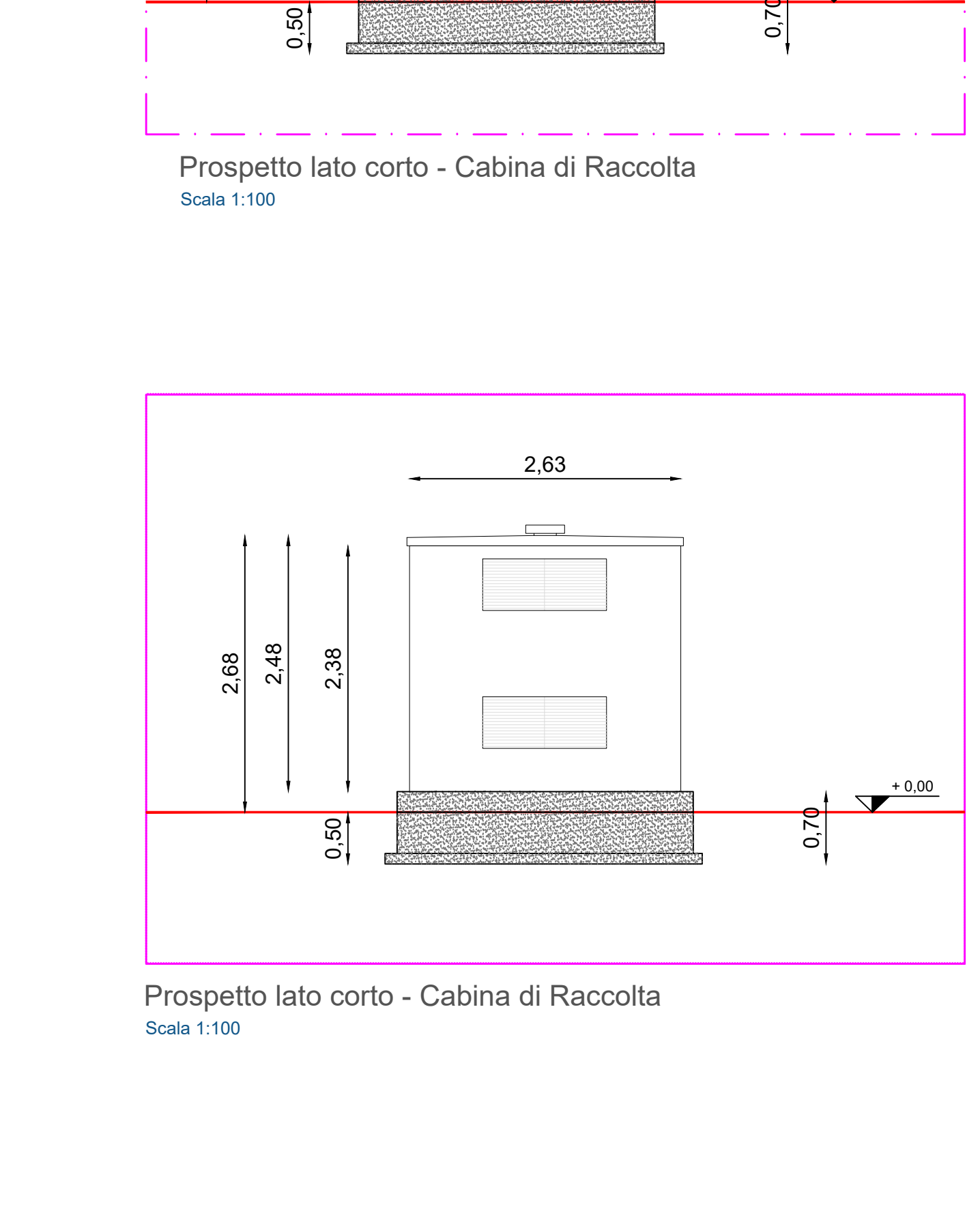
Sezione di posa in opera cabina
Scala 1:100



Layout di posa in opera cabinato
Scala 1:100



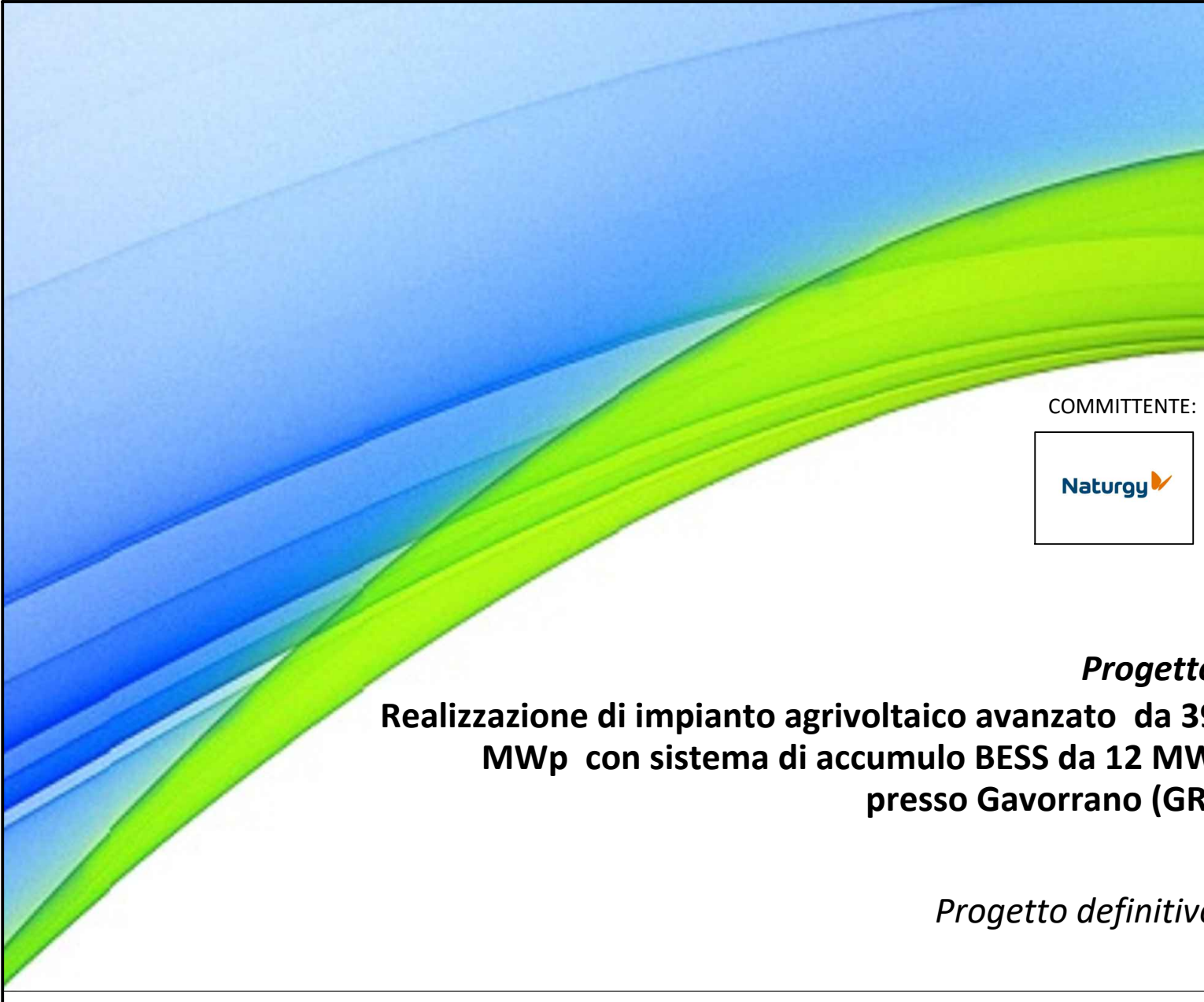
Layout di posa in opera cabinato
Scala 1:100



Prospetto lato corto - Cabina di Raccolta
Scala 1:100

DETTAGLI IMPIANTO BESS	
AC Power	12,00 MW
DC Power	11,52 MW
Energia Totale	46,08 MWh
Potenza singola PCS	3,00 MW
N. PCS	4
Energia Singolo Container	2,88 MWh
N. Container Batterie	16

- LEGENDA**
- 2,88 MWh Container BESS
 - 3 MW Cabina di trasformazione
 - Cabina di Raccolta BESS
 - Area opere di mitigazione
 - Viabilità interna
 - Recinzione
 - Fascia di rispetto ferroviaria



Progetto
Realizzazione di impianto agrivoltaico avanzato da 39 MWp con sistema di accumulo BESS da 12 MW presso Gavorrano (GR)
Progetto definitivo

NAT02_PD_PEC_TAV17
Piante, sezioni e prospetti cabine BESS

COMMESSA	LIVELLO	AMB.	ELAB.	N.	NOME FILE	FORMATO	SCALA
NAT02	PD	PEC	TAV	17	NAT02_PD_PEC_TAV17	A0	1:8000
REV. 0	DATA	REDAZIONE	VERIFICA	APPROVAZIONE	VERIFICATO	DESCRIZIONE	
1		S. Casaccia	L. Nigro	M.L. Gianni		Consegna Progetto Definitivo	
2							
3							