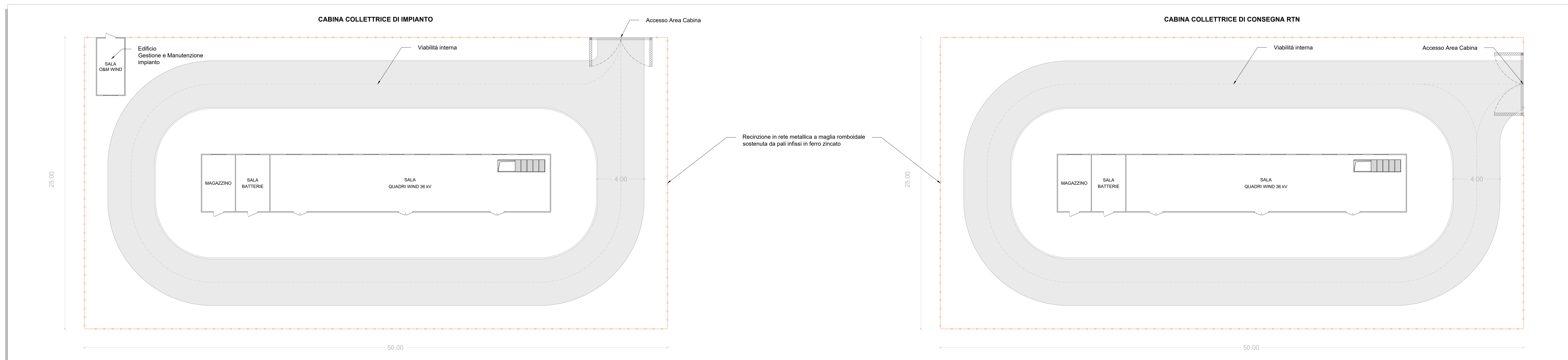
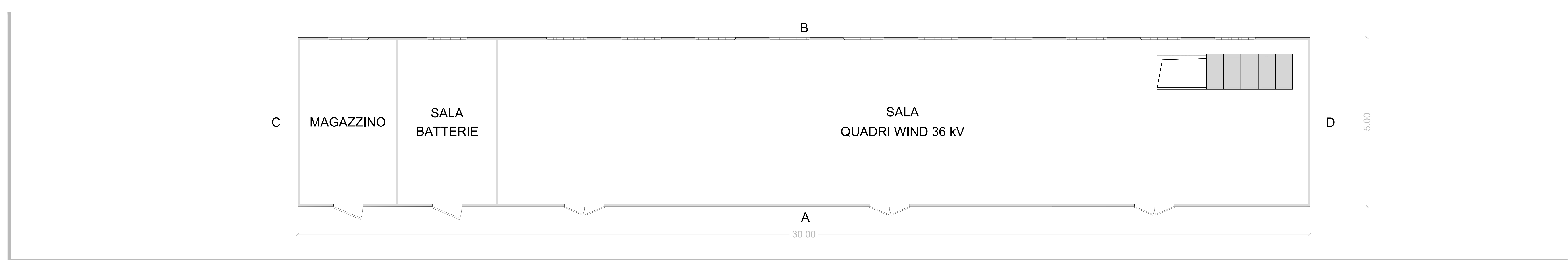


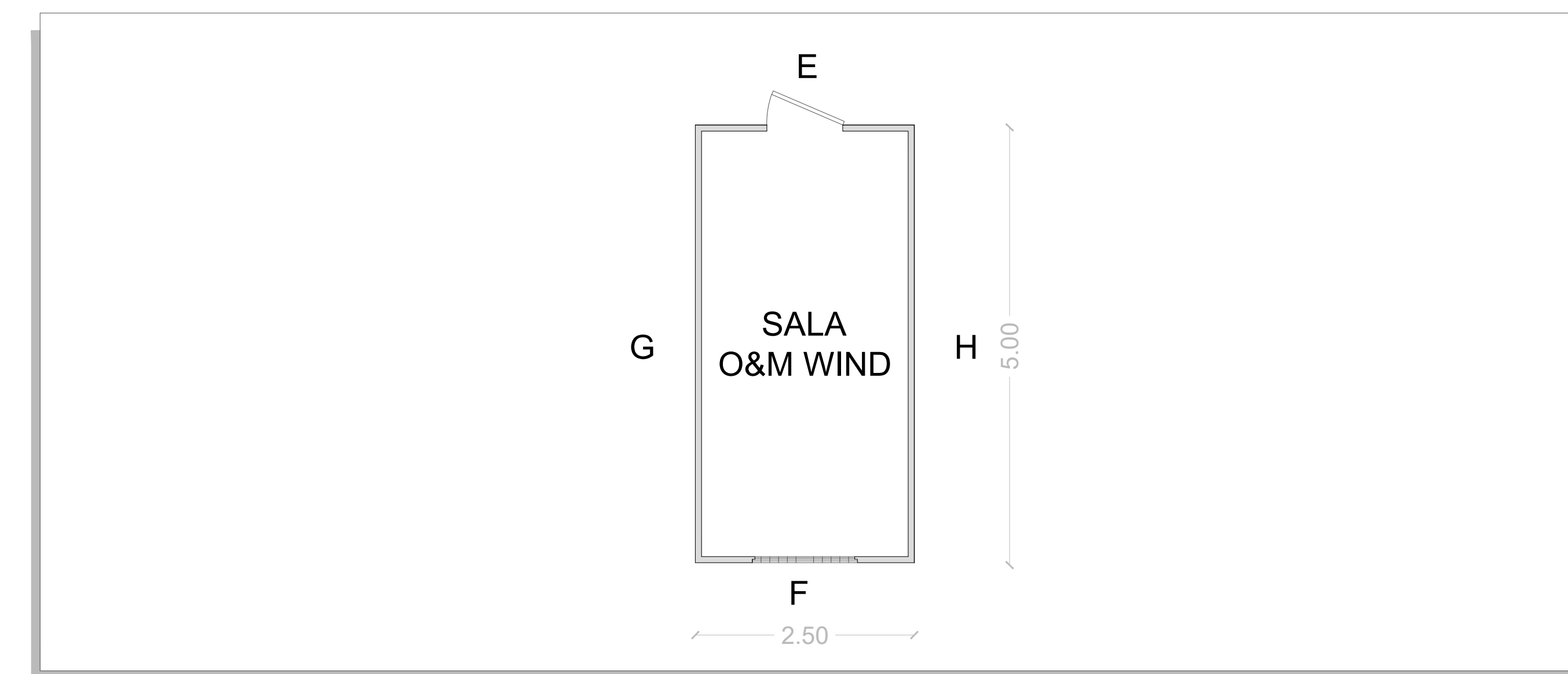
PLANIMETRIA AREA CABINA COLLETRICE - SCALA 1:100



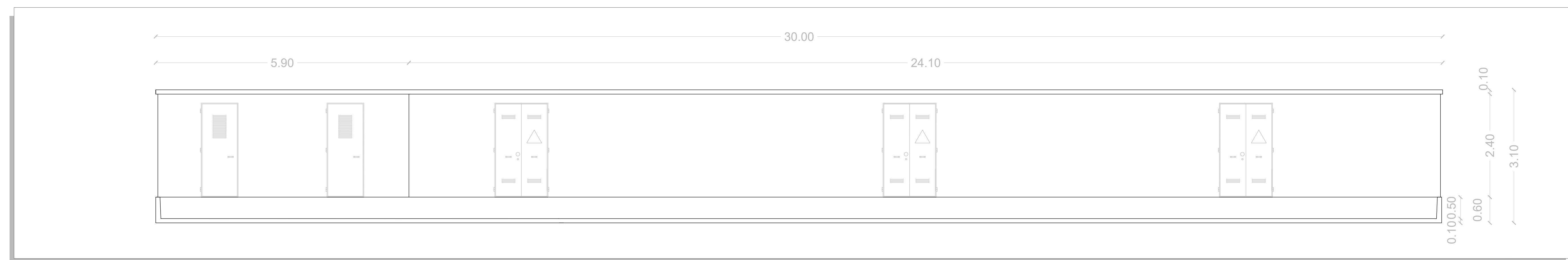
PIANTA CABINA COLLETRICE - SCALA 1:50



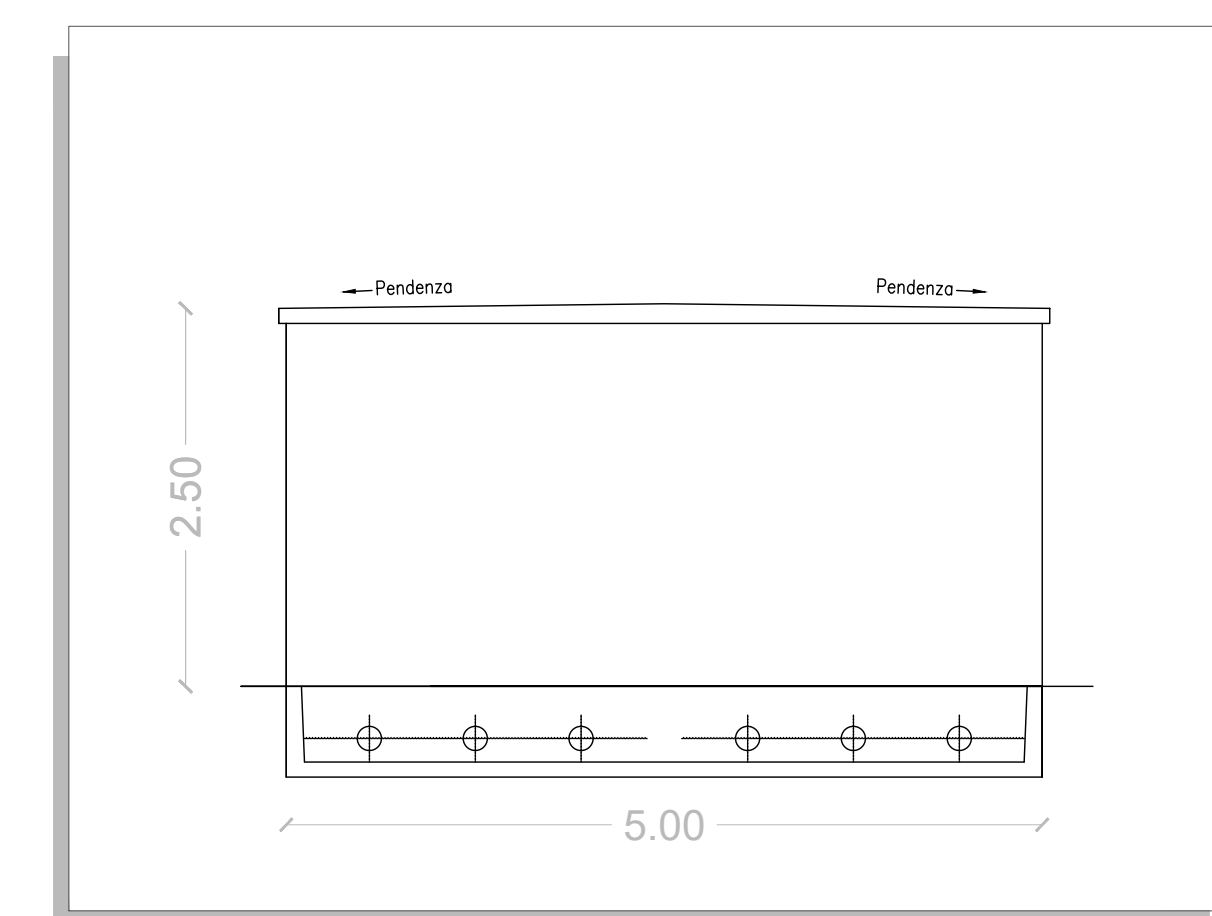
PIANTA EDIFICIO O&M IMPIANTO - SCALA 1:50



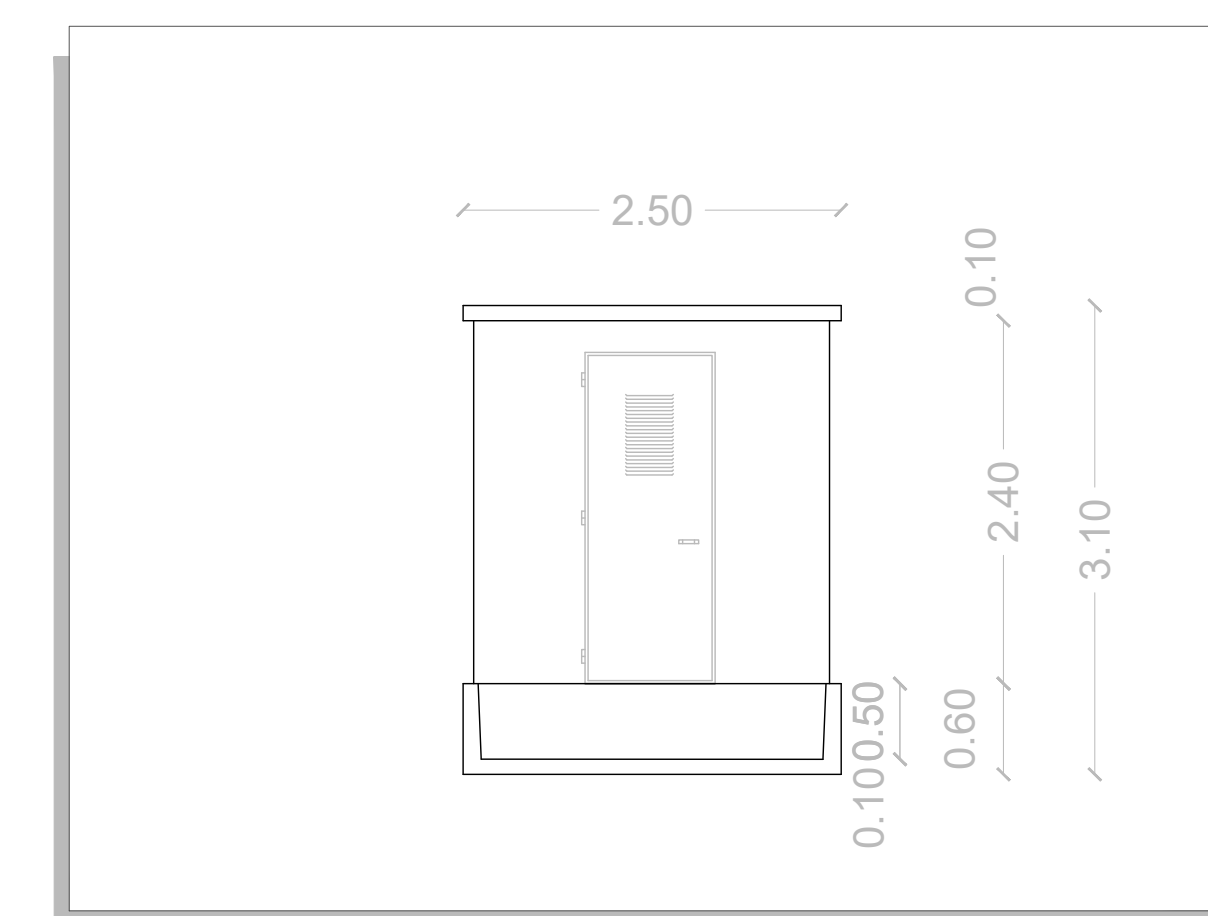
PROSPETTO A - SCALA 1:50



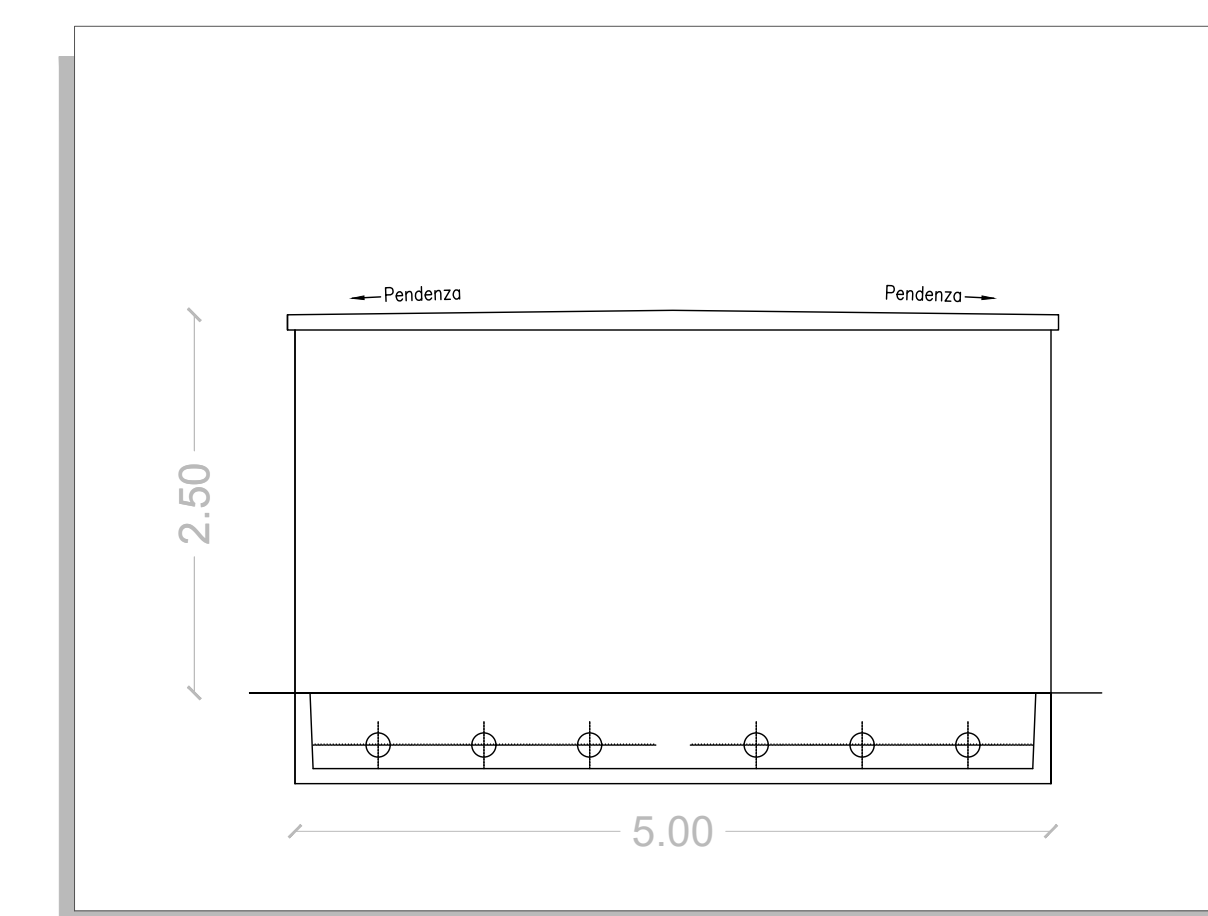
PROSPETTO C - SCALA 1:50



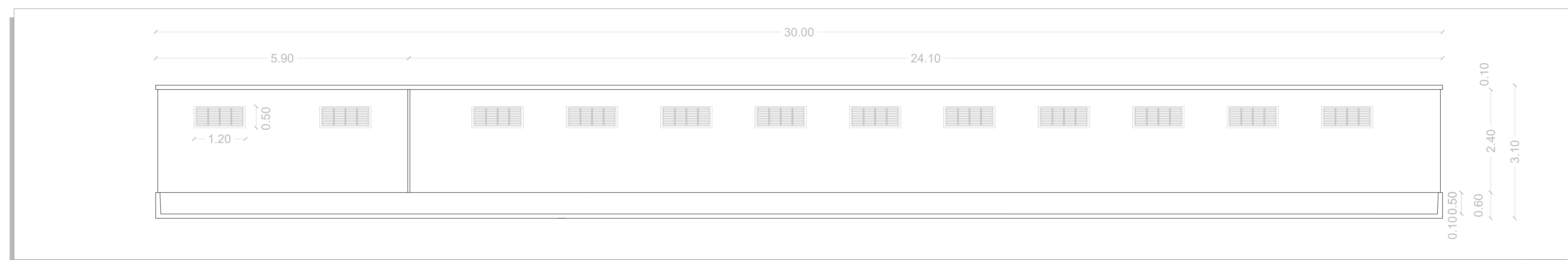
PROSPETTO E - SCALA 1:50



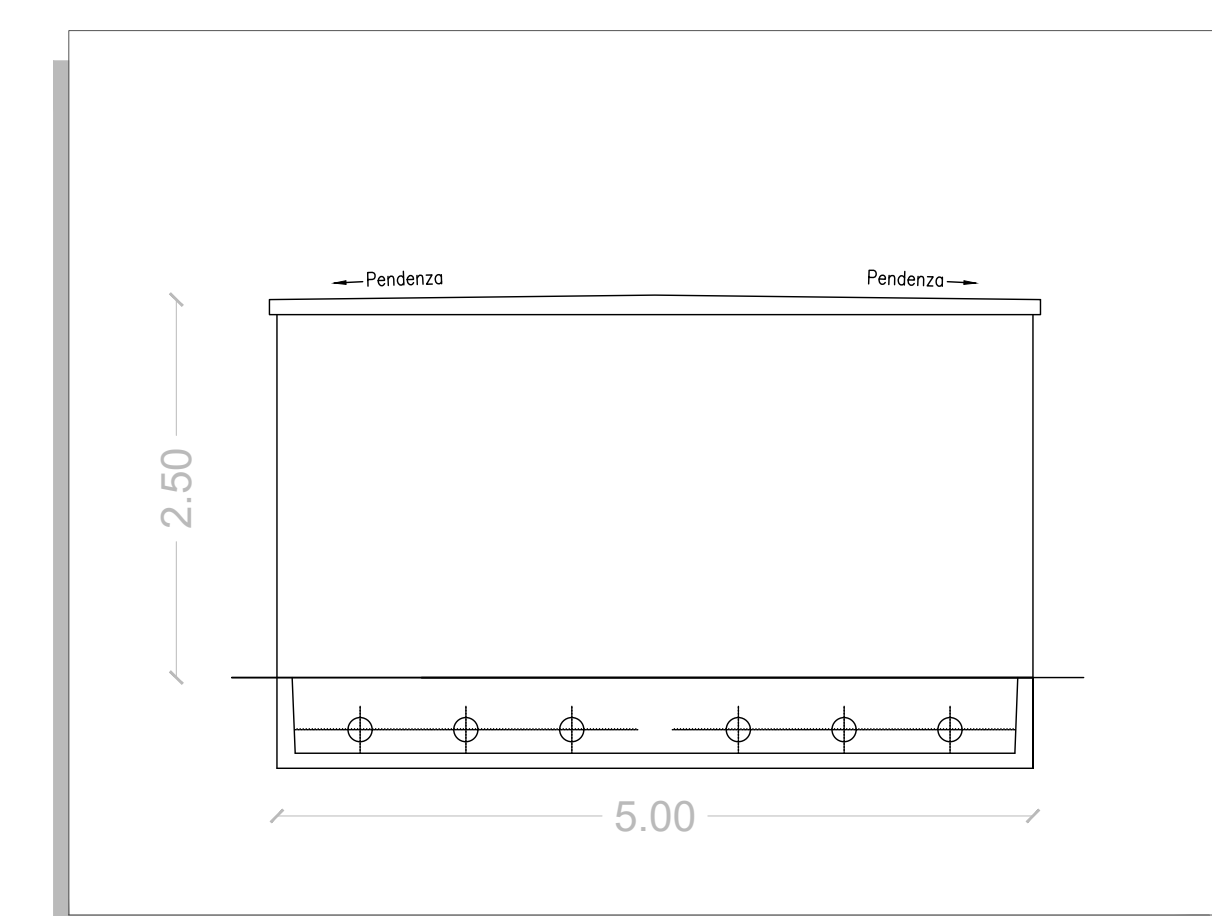
PROSPETTO G - SCALA 1:50



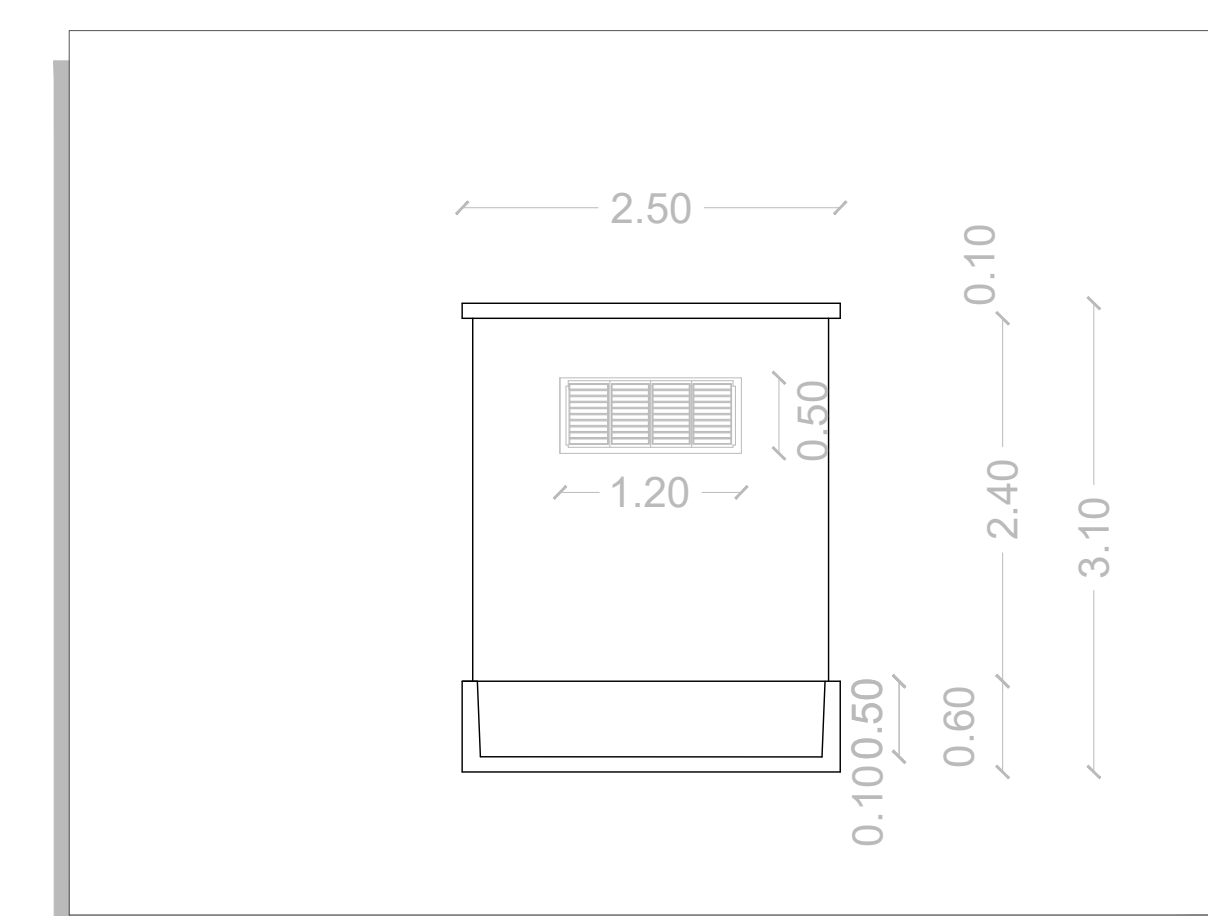
PROSPETTO B - SCALA 1:50



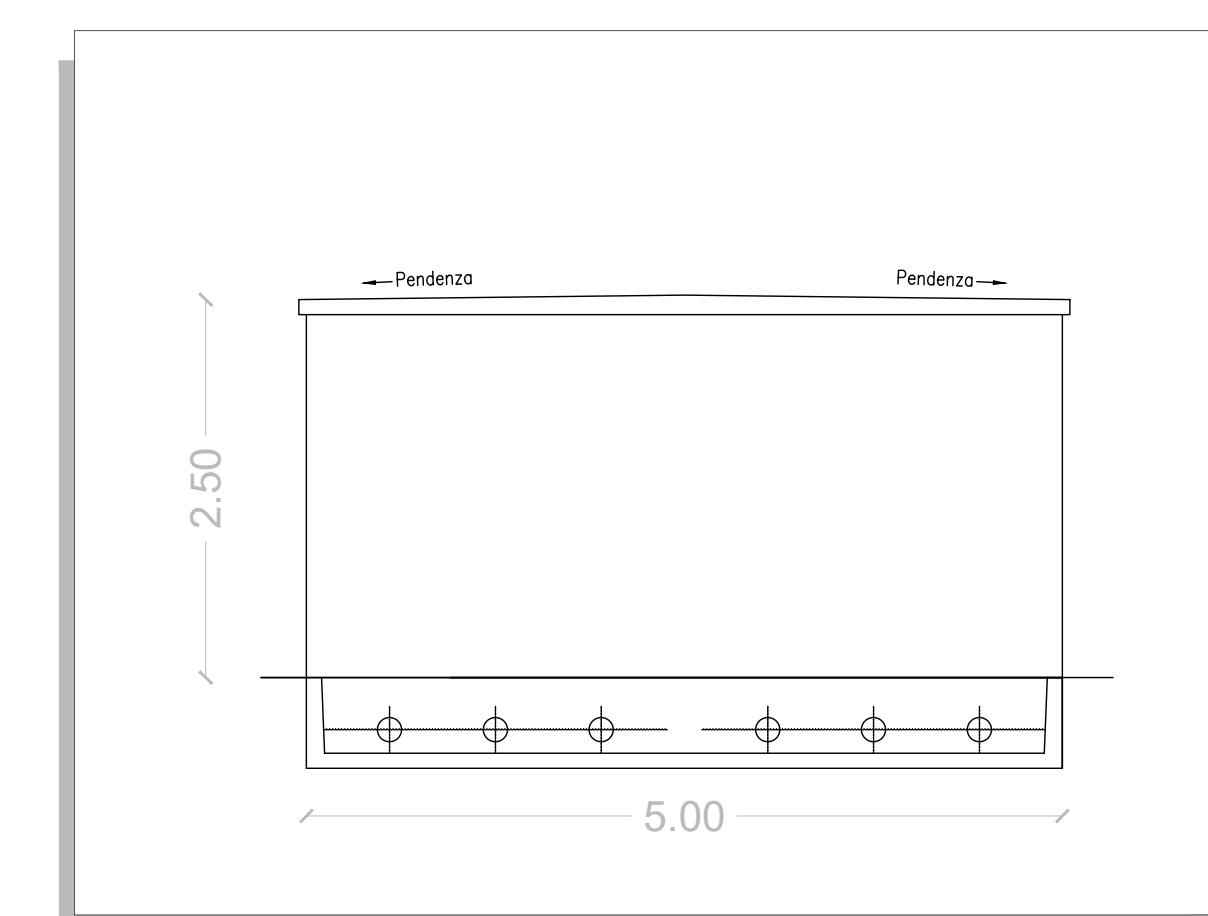
PROSPETTO D - SCALA 1:50



PROSPETTO F - SCALA 1:50



PROSPETTO H - SCALA 1:50



REGIONE SARDEGNA
Provincia del Sud Sardegna
COMUNI DI ISILI, GENONI, NURAGUS E NURALLAO

IMPIANTO EOLICO
IN LOCALITÀ "PERD'E CUADDU"

PROGETTO DEFINITIVO OPERE ELETTRICHE		IN-IS-TE12	
CABINA COLLETRICE - PIANTE E PROSPETTI			

Data	Rev.	Descrizione	Eleg.	Contr.	Appr.
02/09/2024	1	Attivazione VIA Statale	IAT	GF	IN
Novembre 2022	0	Emissione per procedura di VIA	IAT	GF	IN

A cura di:
S.A.T. Consulenza e progetti S.r.l.
Dir. Ing. Giuseppe Frongia

Gruppo di progettazione:
 Ing. Giuseppe Frongia
 Ing. Massimo Salfino
 Ing. Paolo Arduini
 Ing. Tommaso Cossu
 Ing. Tommaso Cossu
 Ing. Tommaso Cossu

Contributi specialistici:
 Ing. Massimo Salfino
 Ing. Paolo Arduini
 Ing. Tommaso Cossu
 Ing. Tommaso Cossu
 Ing. Tommaso Cossu

Progettazione:
 Dir. Ing. Giuseppe Frongia

Il Commento:

Consulenza:
 Ing. Massimo Salfino
 Ing. Paolo Arduini
 Ing. Tommaso Cossu
 Ing. Tommaso Cossu
 Ing. Tommaso Cossu

Logo: IAT, GF, IN, Consorzio di Progettazione, Ing. Massimo Salfino, Ing. Paolo Arduini, Ing. Tommaso Cossu, Ing. Tommaso Cossu, Ing. Tommaso Cossu