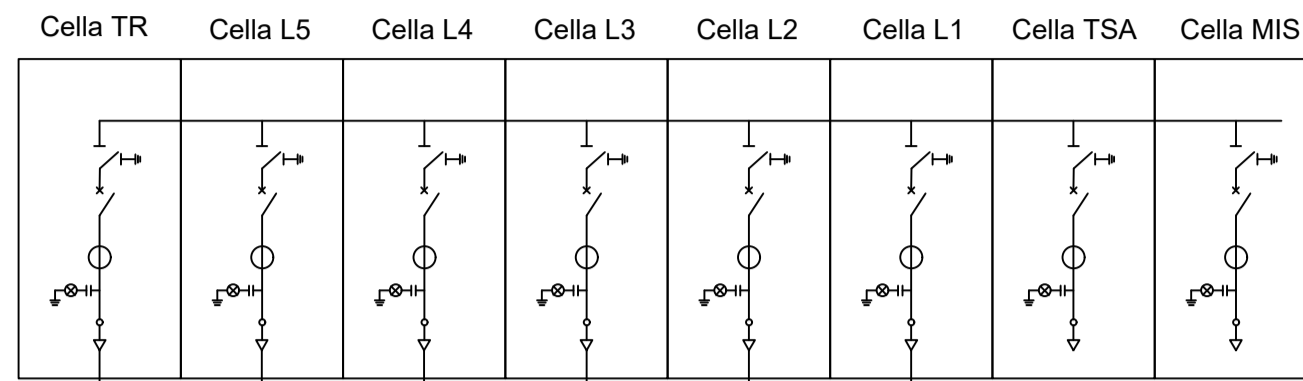
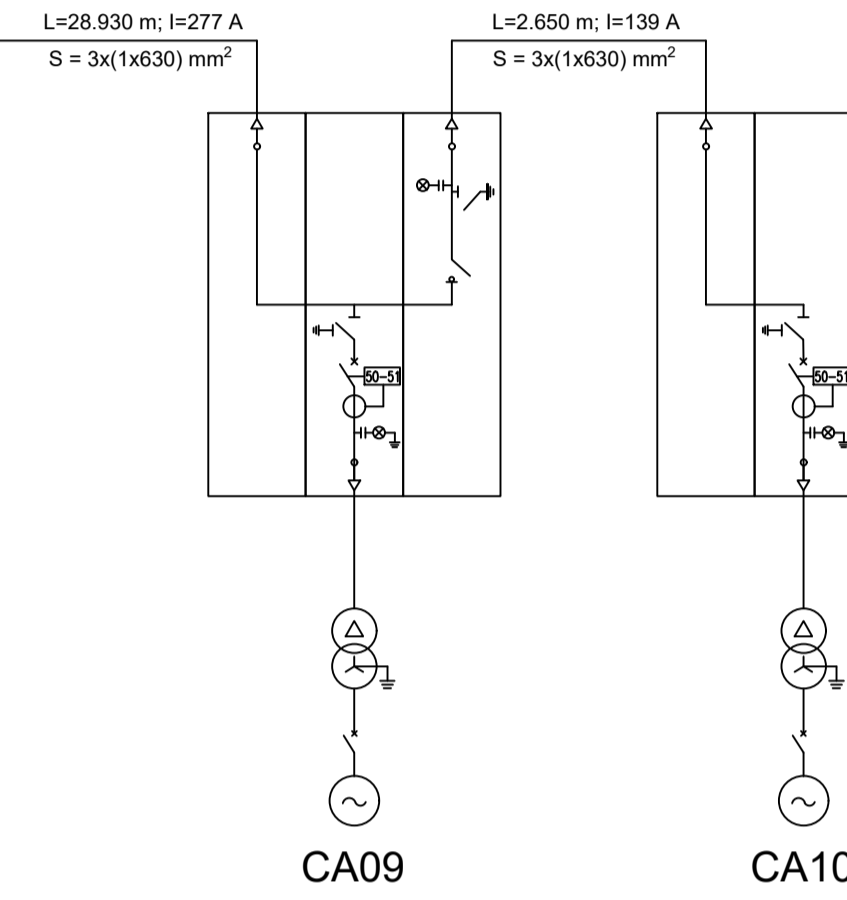


STAZIONE DI TRASFORMAZIONE
30/150 kV

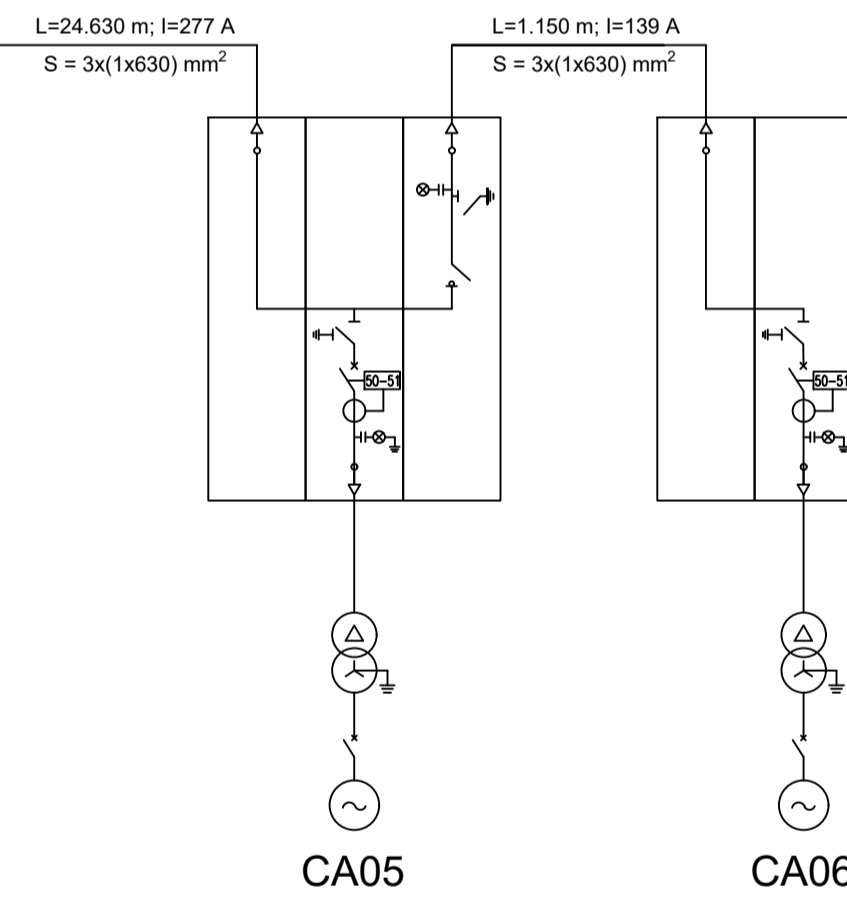


150/30kV
YNd11
70/80 MVA

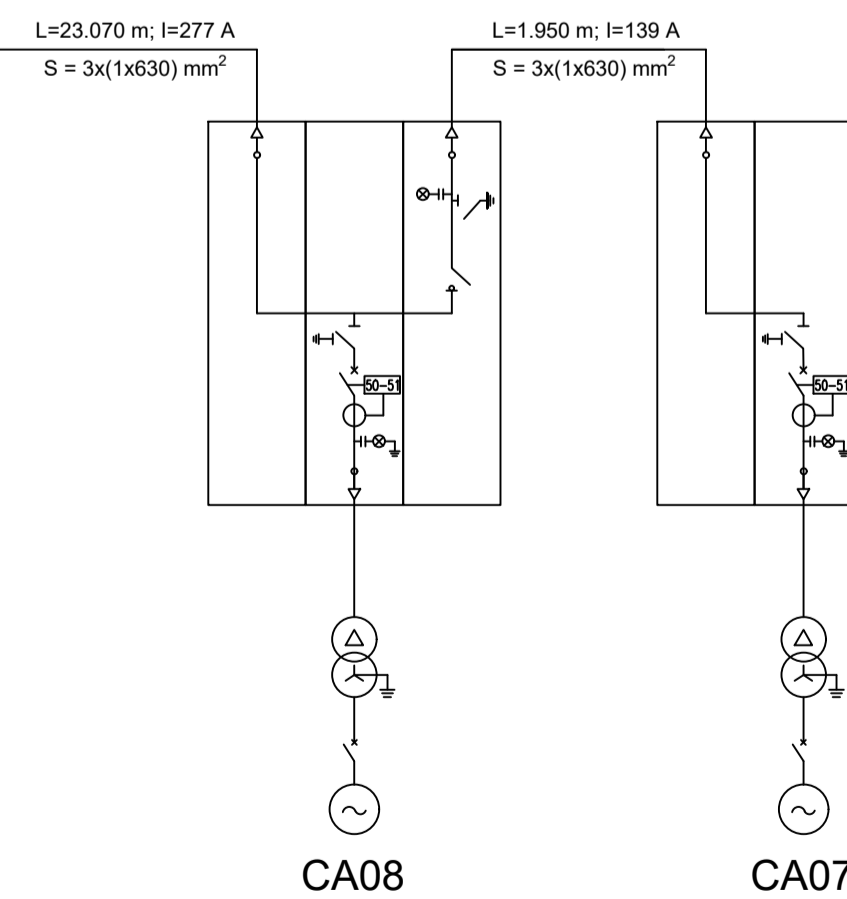
CIRCUITO 1



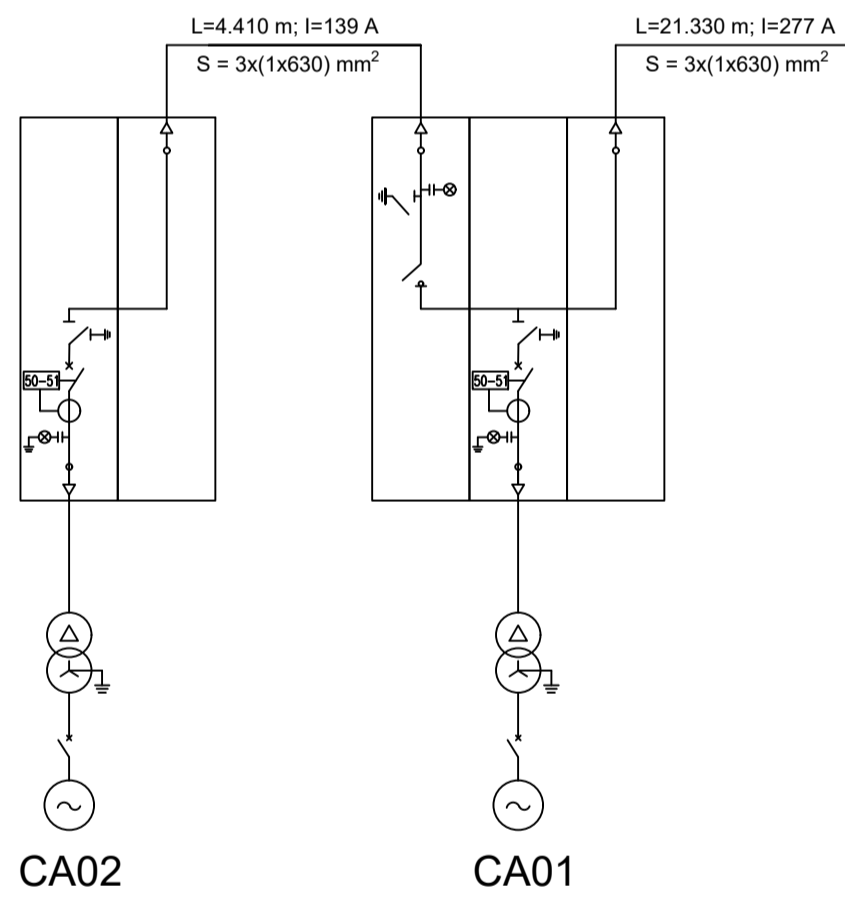
CIRCUITO 2



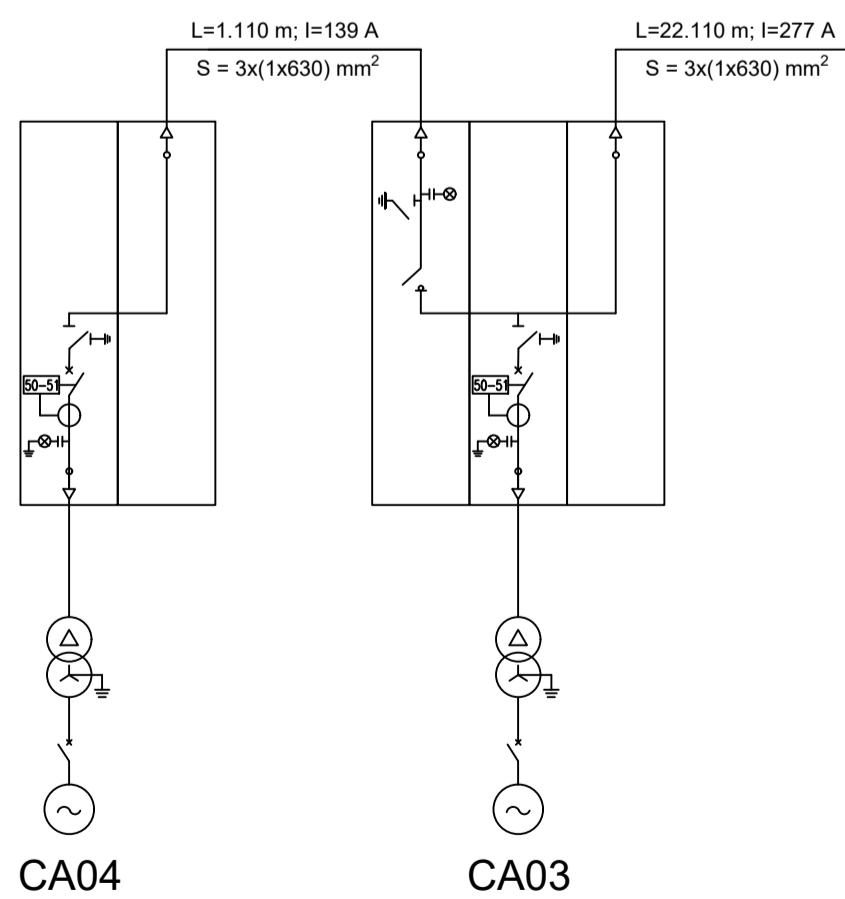
CIRCUITO 3



CIRCUITO 5



CIRCUITO 4



Committente: **CAST WIND S.R.L.**
Piazza Europa, 14
87100 Cosenza (CS) - Italy
Tel. centralino +39 0984 408606

Documento: **PROGETTO DEFINITIVO**

Titolo del Progetto: **PARCO EOLICO "CASTELLANETA"**

Elaborato: **Schema Unifilare Rete MT**
CODICE PRATICA: **XHY1E7**

PROGETTO	DISCIPLINA	AMBITO	TIPO ELABORATO	PROGRESSIVO	SCALA
E_CAS	E	EG	DC	02	

NOME FILE: E_CAS_G_EG_DC_02_Schema_Unifilare_Rete_MT

Progettazione: **Ing. Raffaele Ciotola**



Rev.	Data Revisione	Descrizione Revisione	Redatto	Controllato	Approvato
00	MAGGIO 2024	PRIMA EMISSIONE	Ing. Raffaele Ciotola	GEMSA PRO	CAST WIND