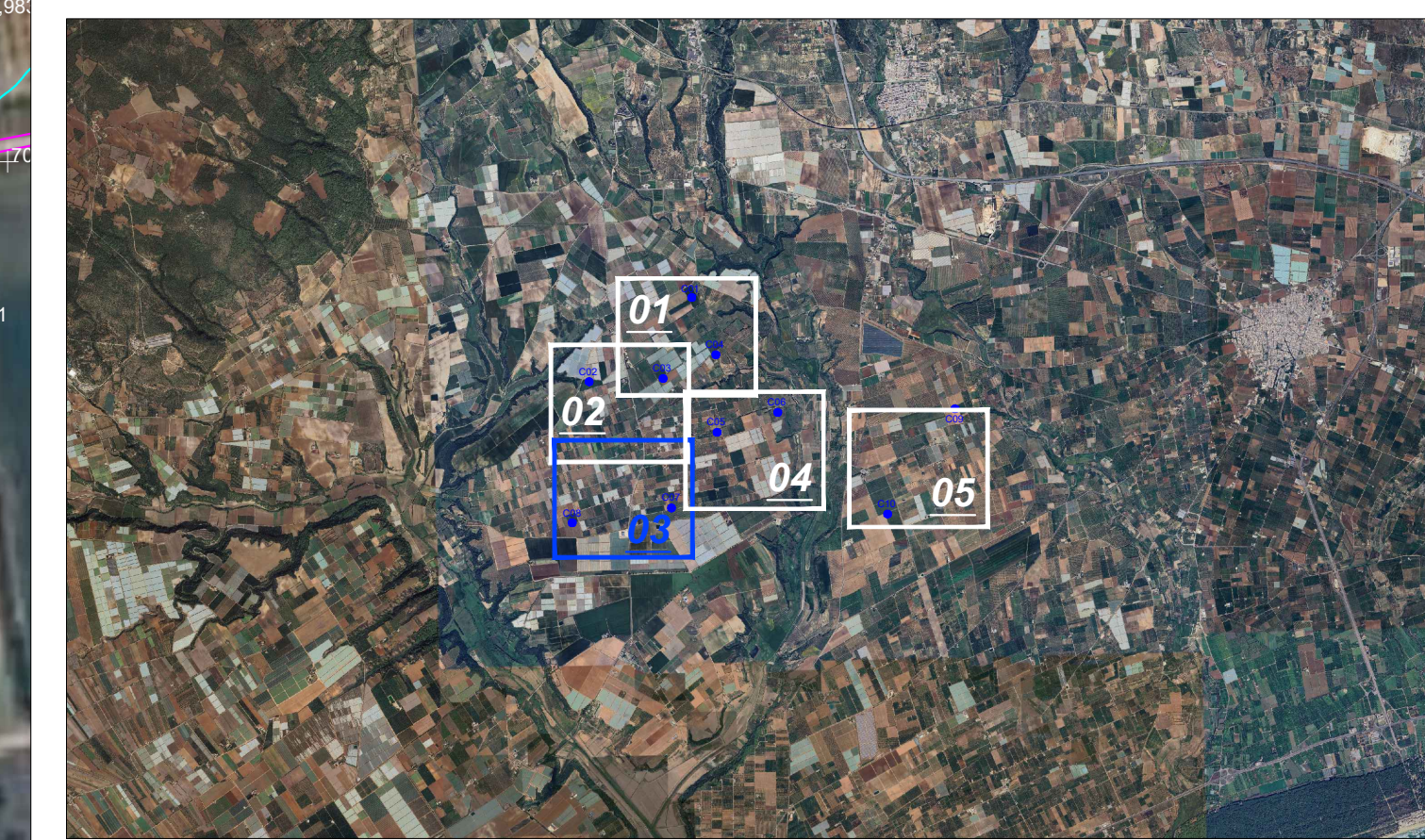
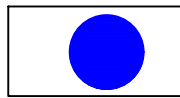

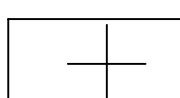

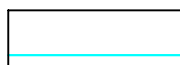
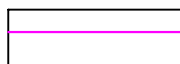





# Key-Map 1:100.000



## Legenda

-  Posizione Aerogeneratori
-  Identificativo Aerogeneratore
-  Punto battuto e relativa quota terreno
-  Curve di livello intervallo 2,00 mt.
-  Curve di livello intervallo 10,00 mt.
-  Strada esistente



 					
Committente: <b>CAST WIND S.R.L.</b> Piazza Europa, 14 87100 Cosenza (CS) - Italy Tel. centralino +39 0984 408608					
Documento: <b>PROGETTO DEFINITIVO</b>					
Titolo del Progetto: <b>PARCO EOLICO "CASTELLANETA"</b>					
Elaborato: <b>Rilievo_Topografico_Tav_03</b>					
PROGETTO <b>E_CAS</b>	DISCIPLINA <b>P</b>	AMBITO <b>CP</b>	TIPO ELABORATO <b>PR</b>	PROGRESSIVO <b>03</b>	SCALA <b>1:2000</b>
NOME FILE: <b>E_CAS_P_CP_PR_03_Rilievo_Topografico_Tav_03</b>					
Progettazione: <b>Ing. Saverio Pagliuso</b>					
					
<b>Ing. Mario Francesco Perri</b>					
<b>Ing. Giorgio Salatino</b>					
Rev:	Data Revisione	Descrizione Revisione	Redatto	Controllato	Approvato
00	MAGGIO 2024	PRIMA EMISSIONE	ES	GEMSA PRO	CAST WIND S.R.L.