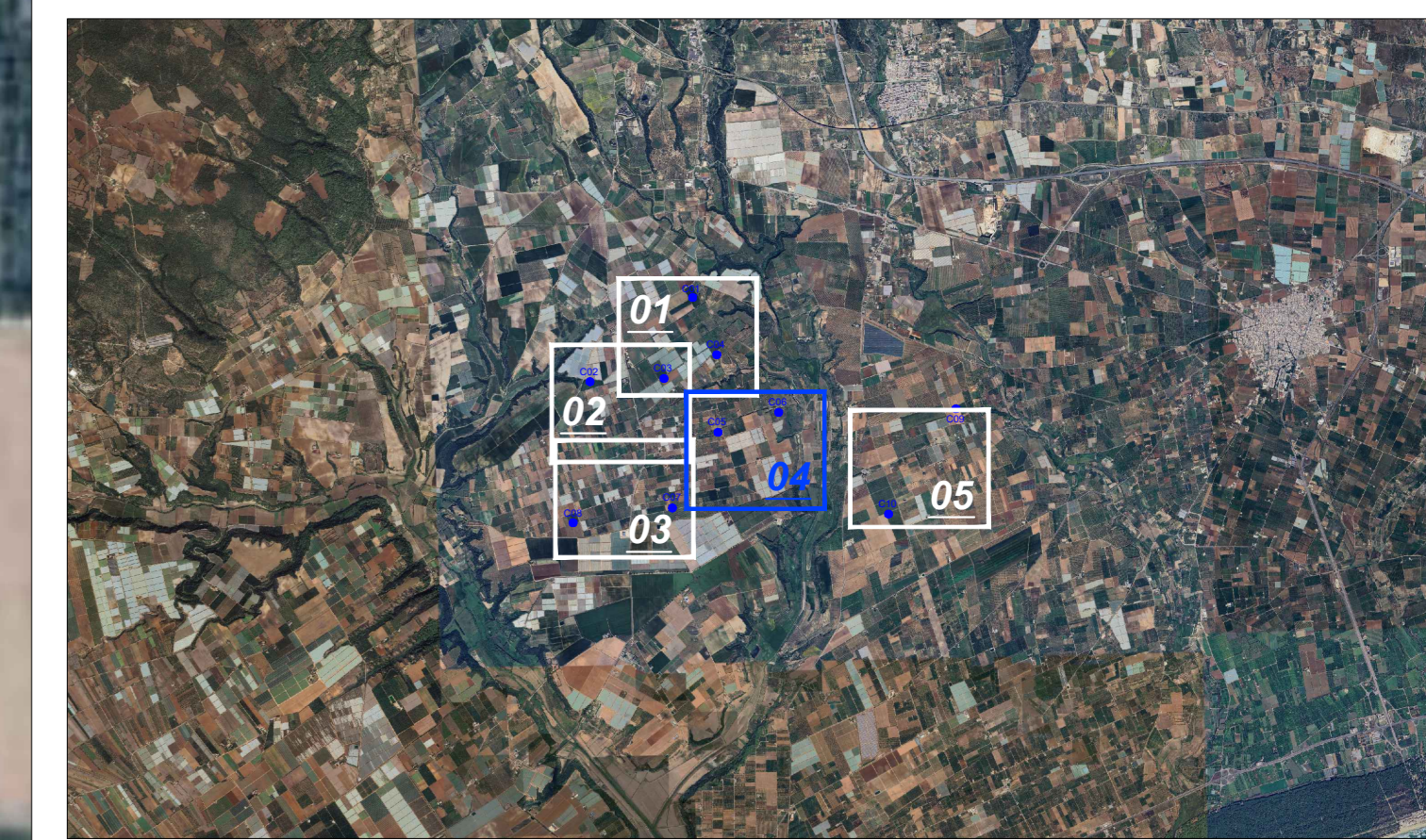
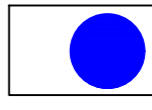

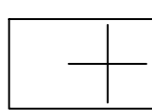
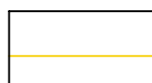
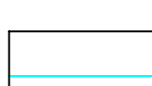
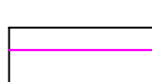
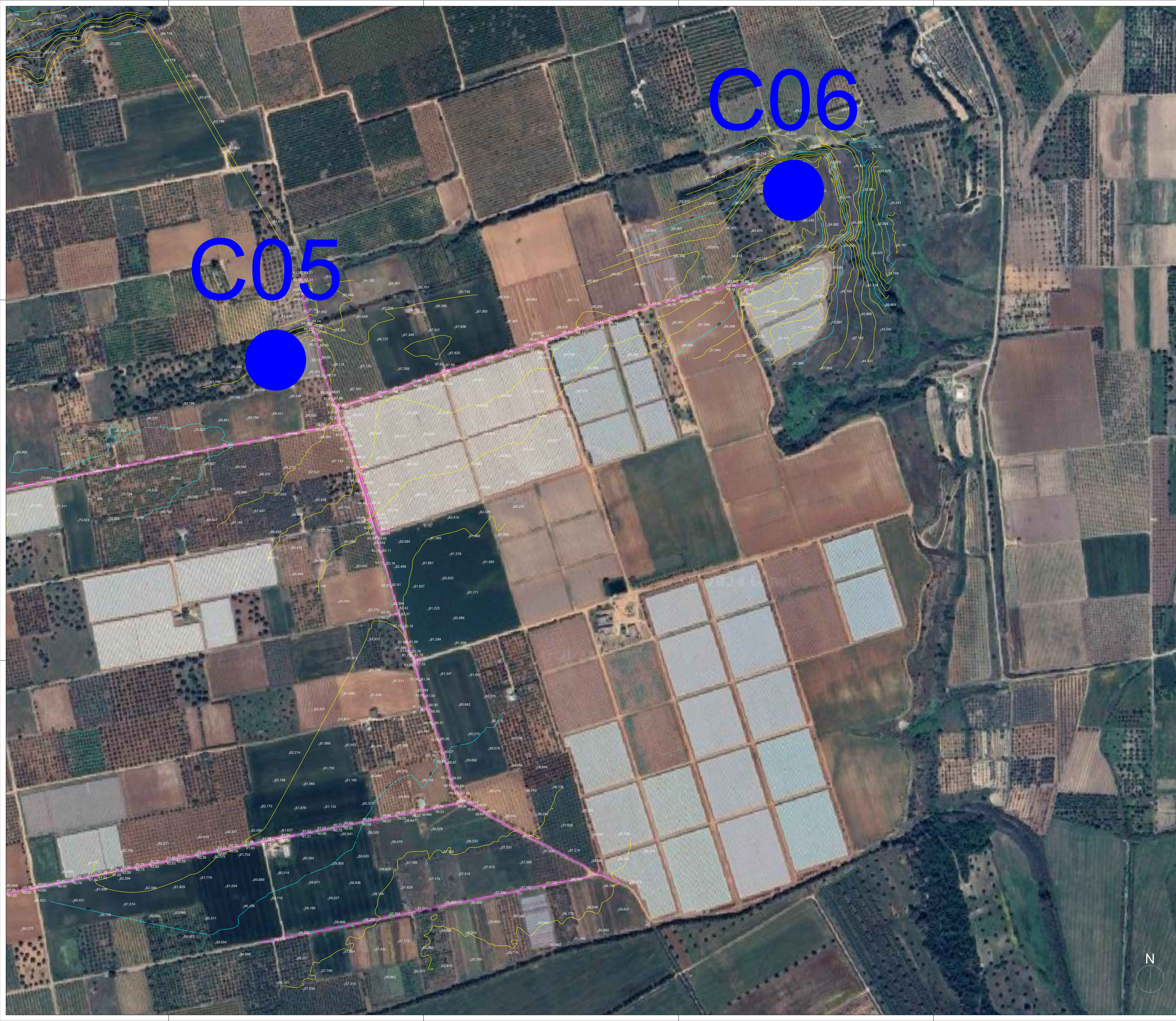


# Key-Map 1:100.000



## Legenda

-  Posizione Aerogeneratori
-  Identificativo Aerogeneratore
-  Punto battuto e relativa quota terreno
-  Curve di livello intervallo 2,00 mt.
-  Curve di livello intervallo 10,00 mt.
-  Strada esistente



					
Comittente: CAST WIND S.R.L. Piazza Europa 14 87100 Cosenza (CS) - Italy Tel. centralino +39 0984 408608					
Documento: <b>PROGETTO DEFINITIVO</b>					
Titolo del Progetto: <b>PARCO EOLICO "CASTELLANETA"</b>					
Elaborato: <b>Rilievo_Topografico_Tav_04</b>					
PROGETTO E_CAS	DISCIPLINA P	AMBITO CP	TIPO ELABORATO PR	PROGRESSIVO 04	SCALA 1:2000
NOME FILE: E_CAS_P_CP_PR_04_Rilievo_Topografico_Tav_04					
Progettazione:					
 Ing. Saverio Pagliuso					
Ing. Mario Francesco Perri					
Ing. Giorgio Salatino					
Rev.	Data Revisione	Descrizione Revisione	Redatto	Controllato	Approvato
00	MAGGIO 2024	PRIMA EMISSIONE	ES	GEMSA PRO	CAST WIND S.R.L.