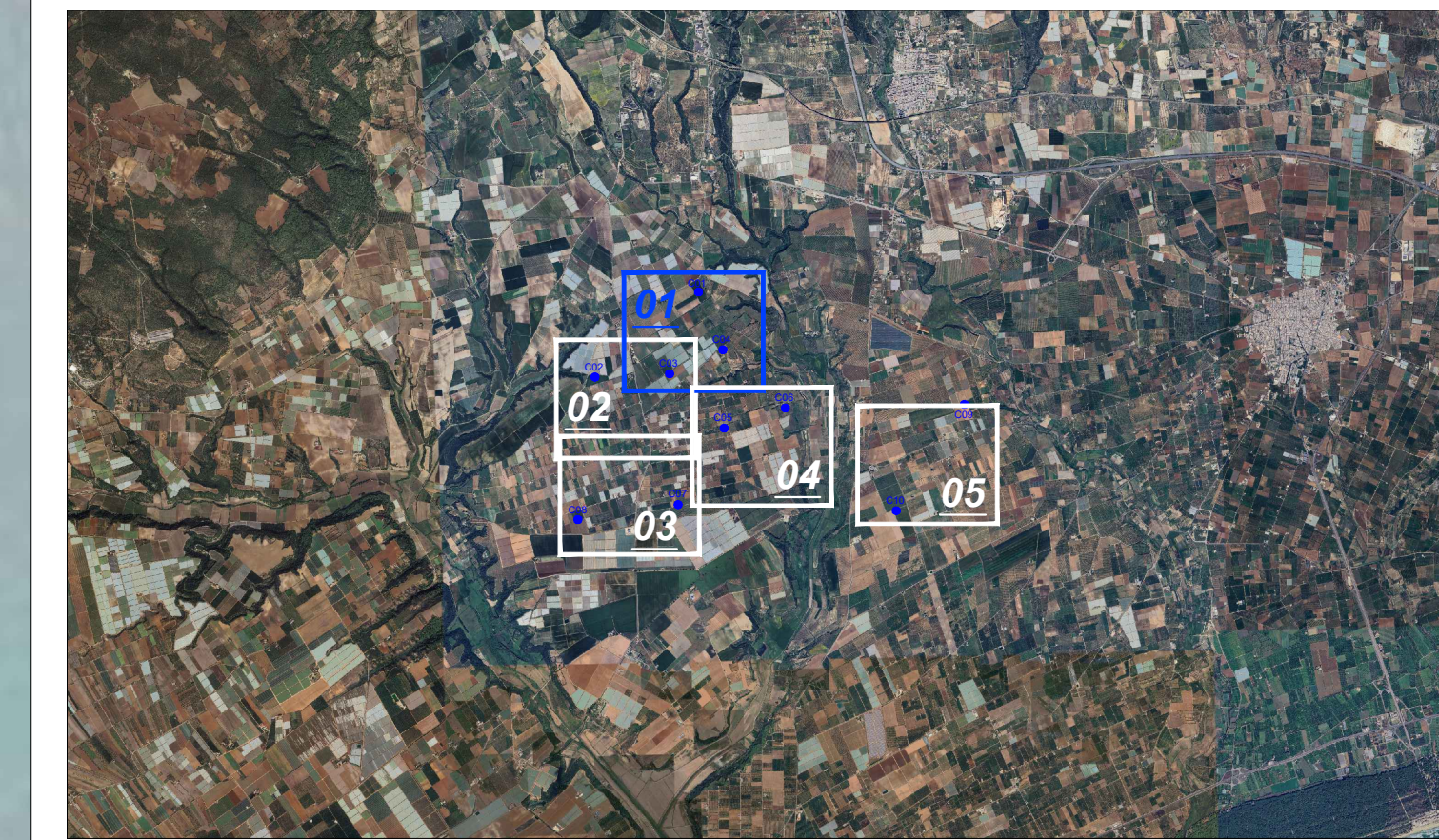
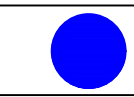

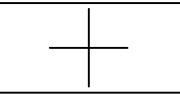
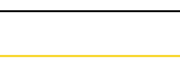
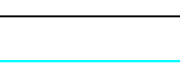
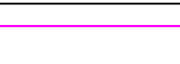
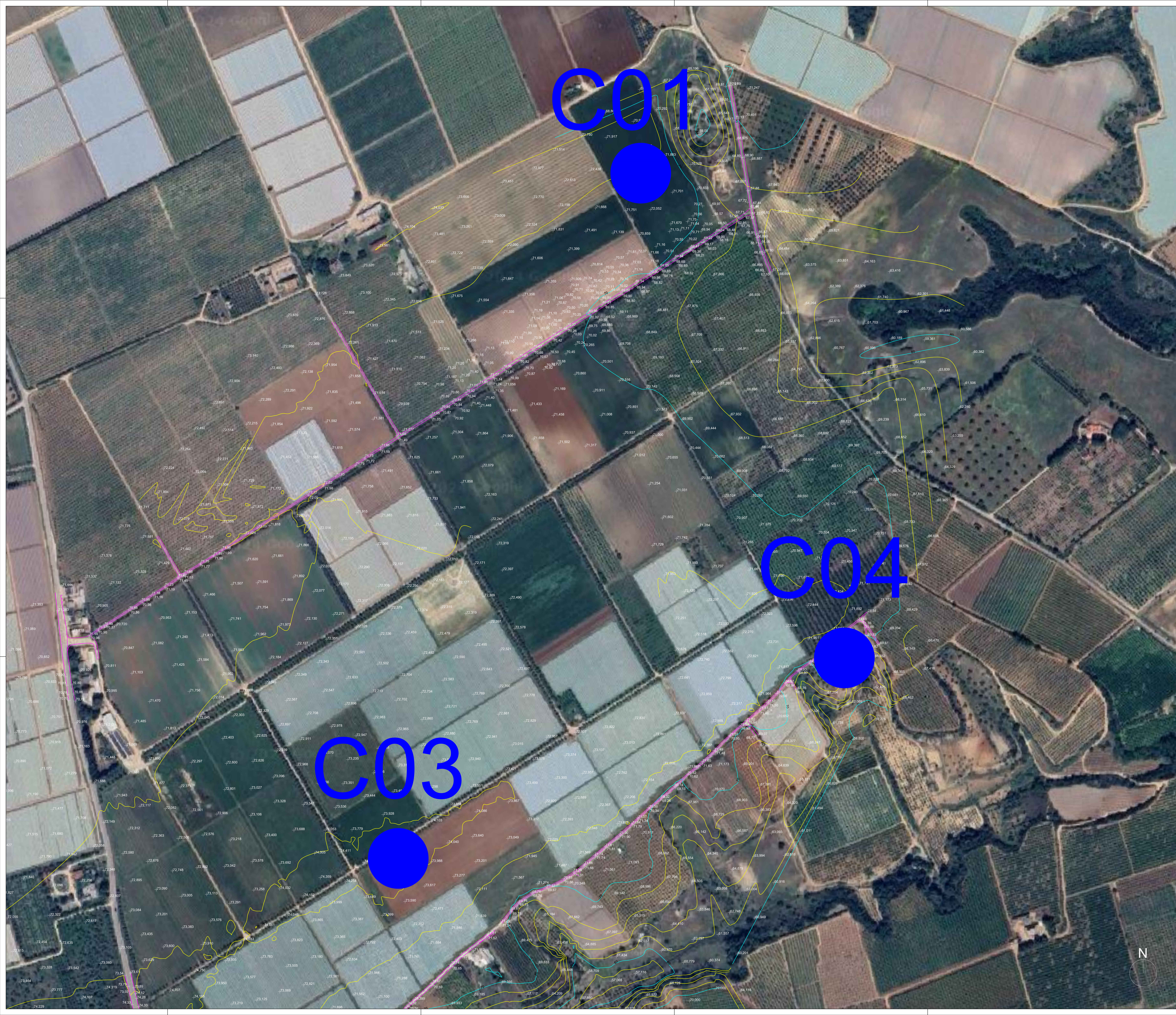


Key-Map 1:100.000



Legenda

-  Posizione Aerogeneratori
-  Identificativo Aerogeneratore
-  Punto battuto e relativa quota terreno
-  Curve di livello intervallo 2,00 mt.
-  Curve di livello intervallo 10,00 mt.
-  Strada esistente



Comittente: CAST WIND S.R.L.
 Piazza Europa 14
 87100 Cosenza (CS) - Italy
 Tel. centralino +39 0984 408608

Documento: **PROGETTO DEFINITIVO**

Titolo del Progetto: **PARCO EOLICO "CASTELLANETA"**

Elaborato: **Rilievo_Topografico_Tav_01**

PROGETTO	DISCIPLINA	AMBITO	TIPO ELABORATO	PROGRESSIVO	SCALA
E_CAS	P	CP	PR	01	1:2000

Nome File: E_CAS_P_CP_PR_01_Rilievo_Topografico_Tav_01

Progettazione:

-  Ing. Saverio Pagliuso
- Ing. Mario Francesco Perri
- Ing. Giorgio Salatino

Rev.	Data Revisione	Descrizione Revisione	Redatto	Controllato	Approvato
00	MAGGIO 2024	PRIMA EMISSIONE	ES	GEMSA PRO	CAST WIND S.R.L.