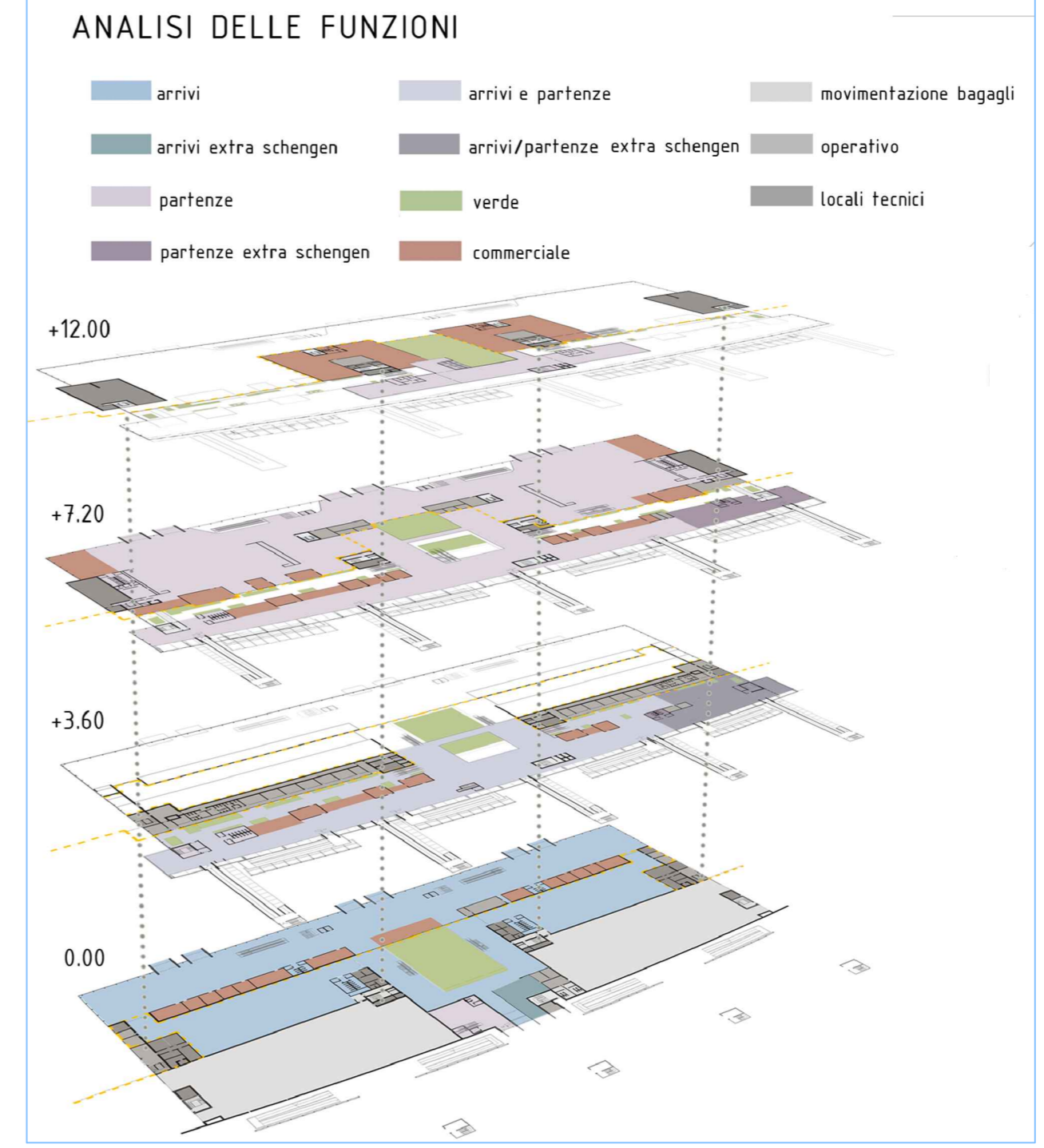
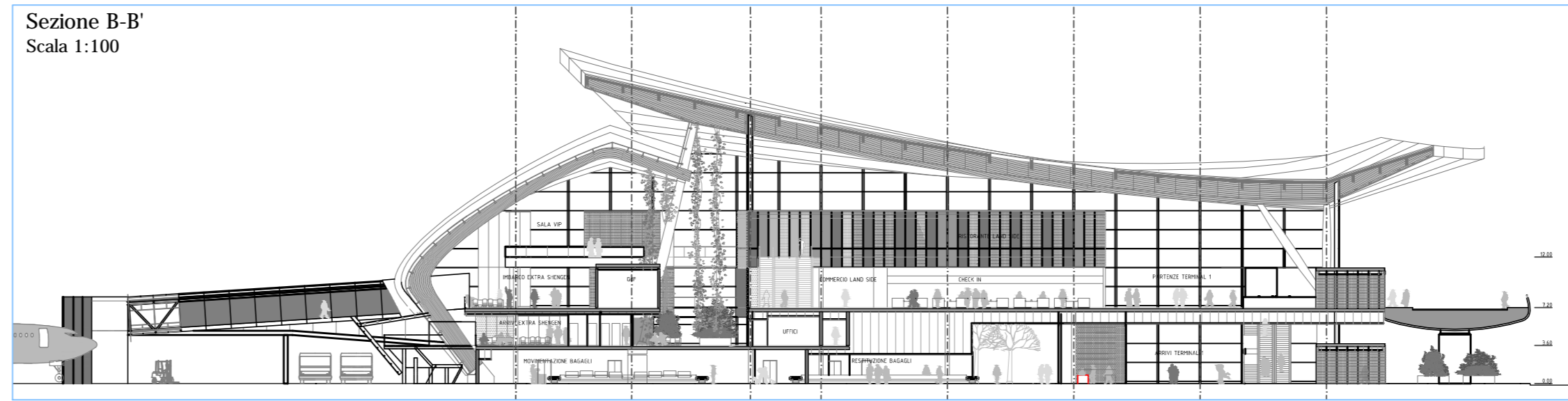
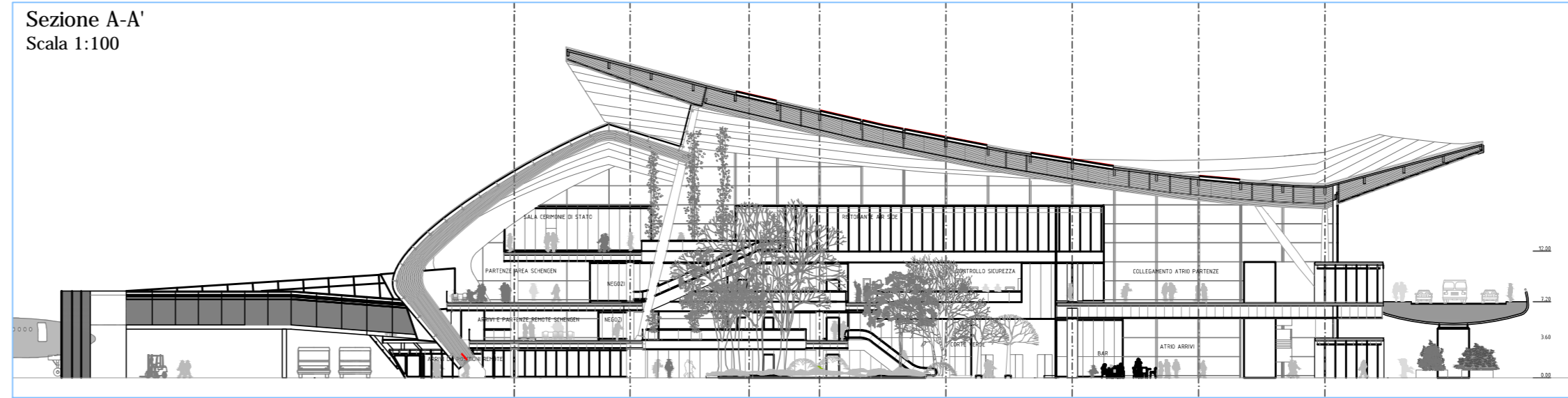
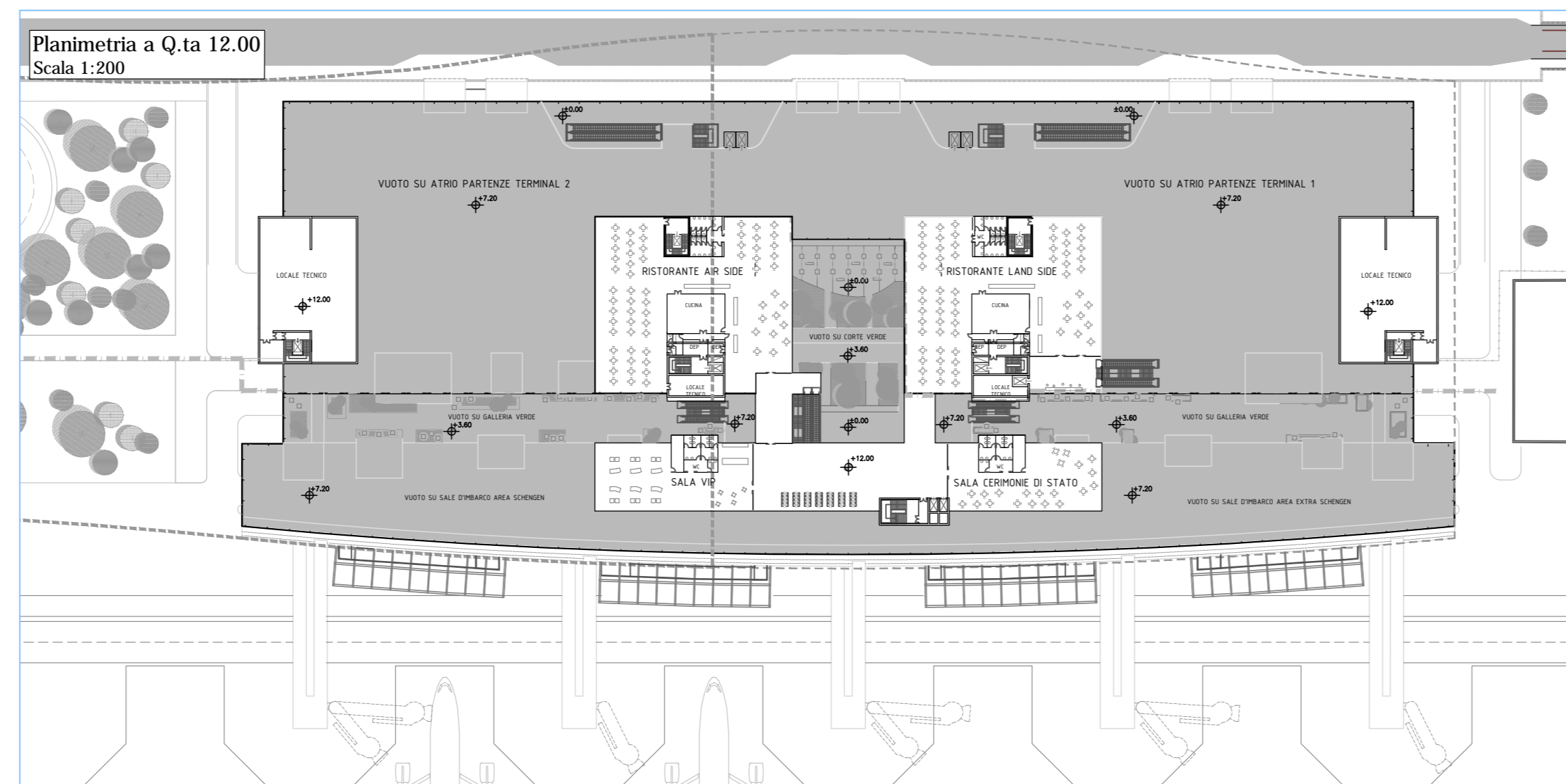
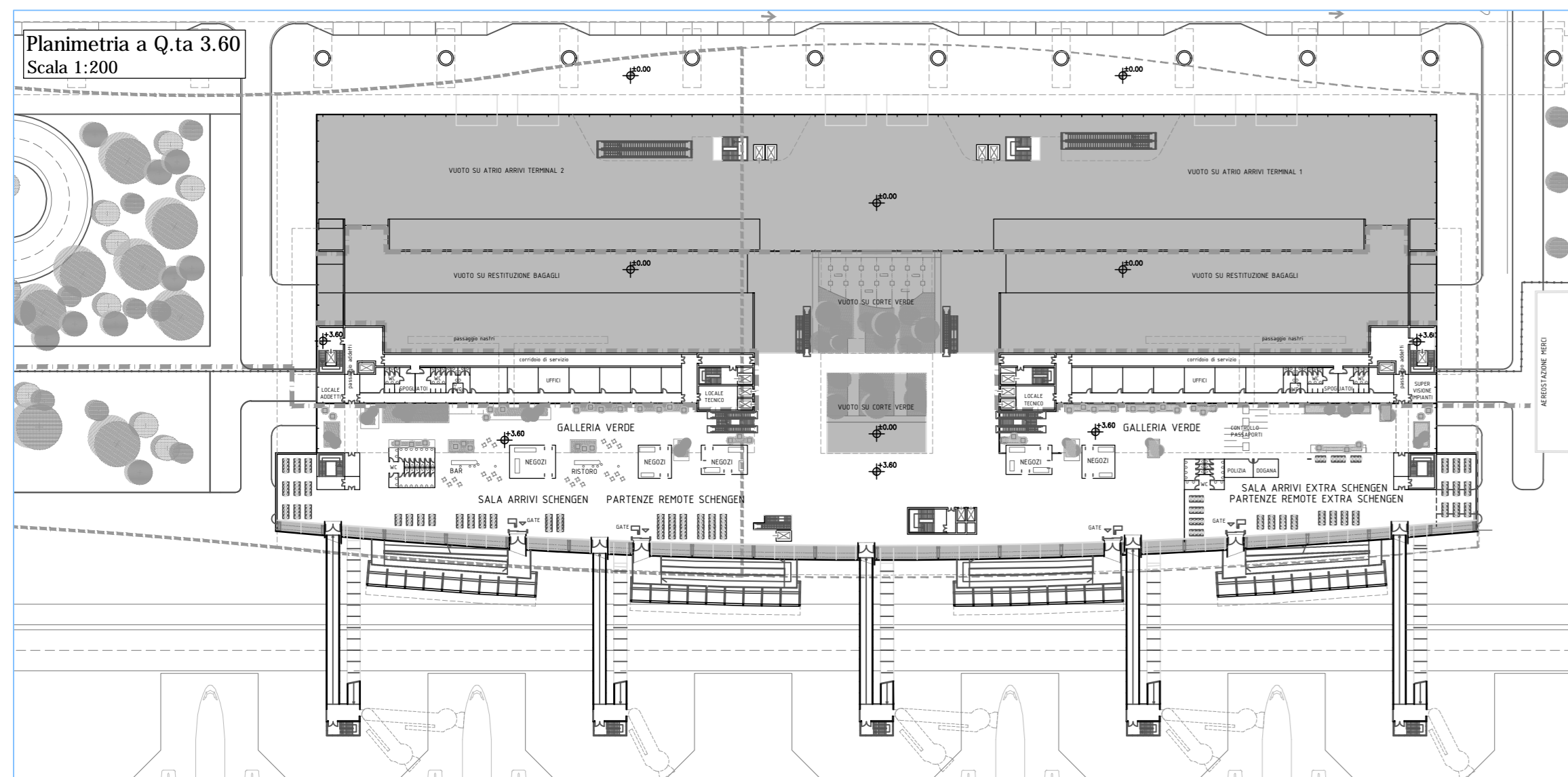
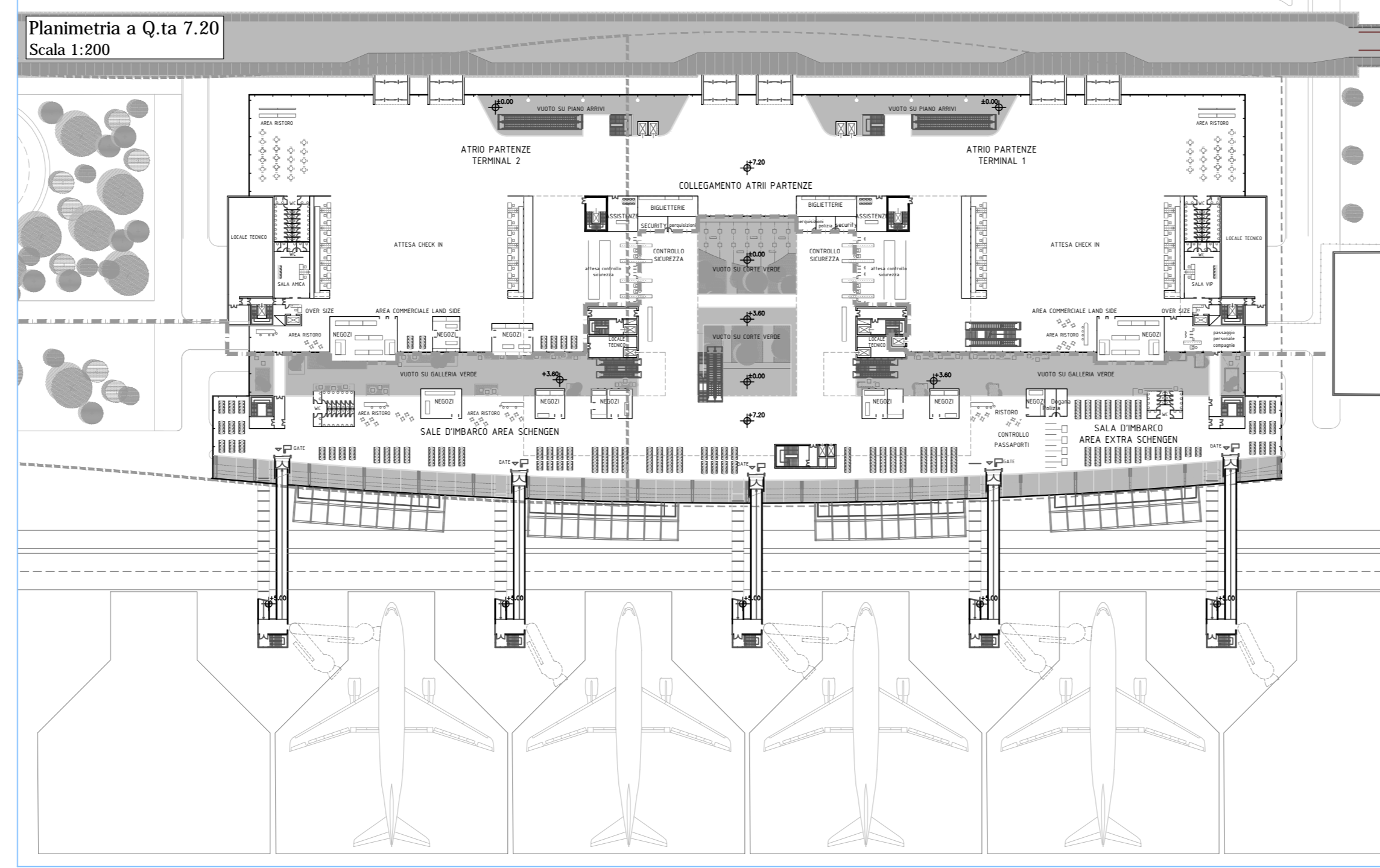
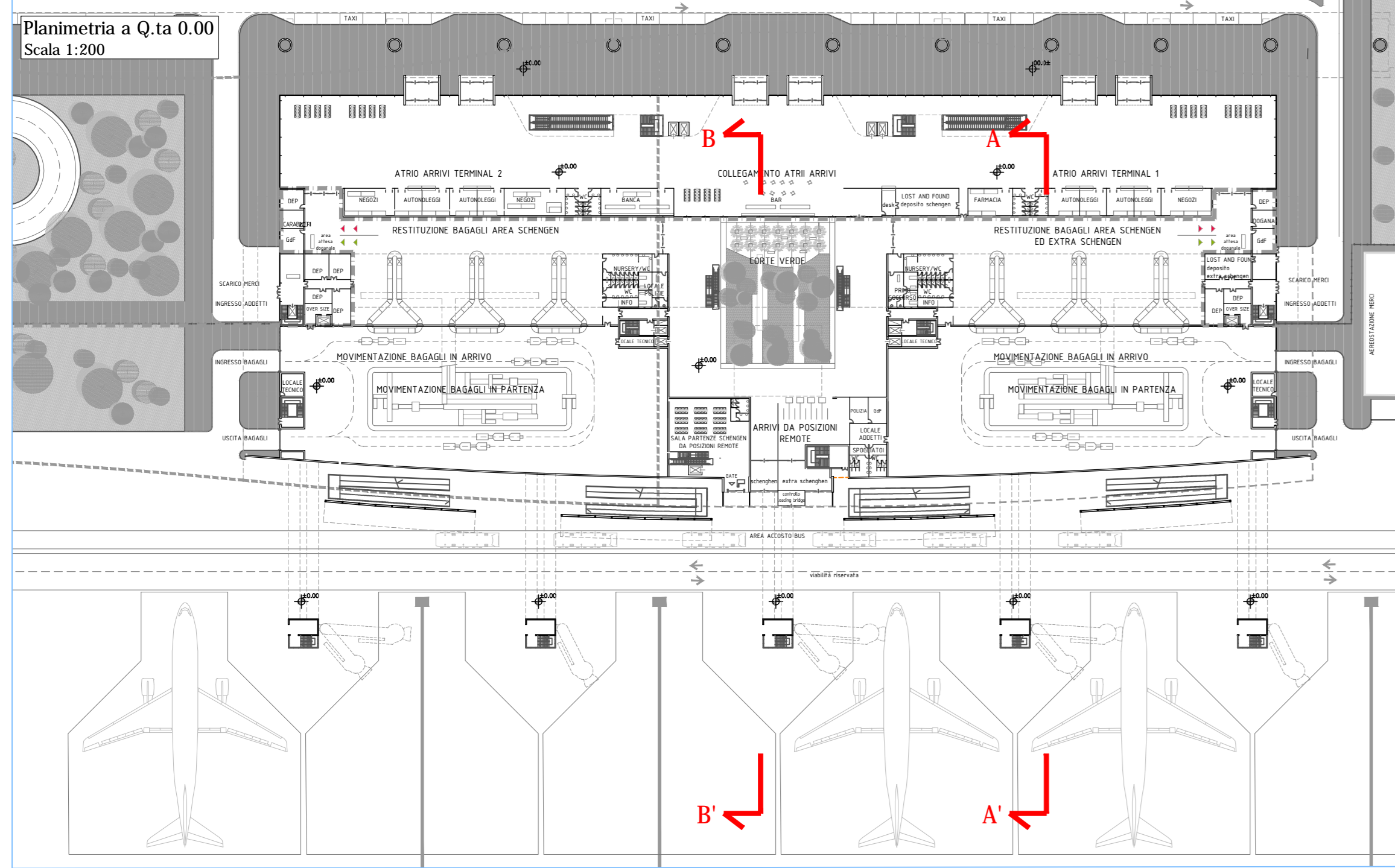
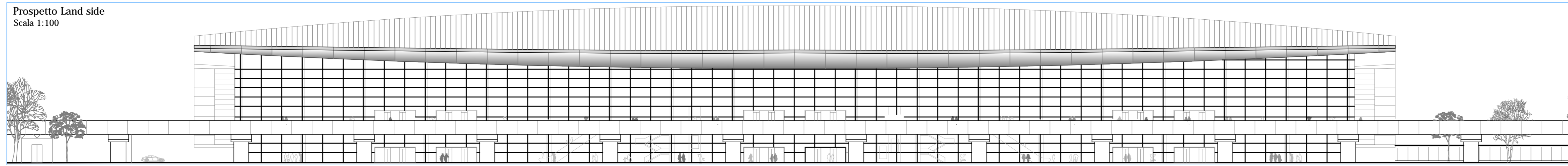
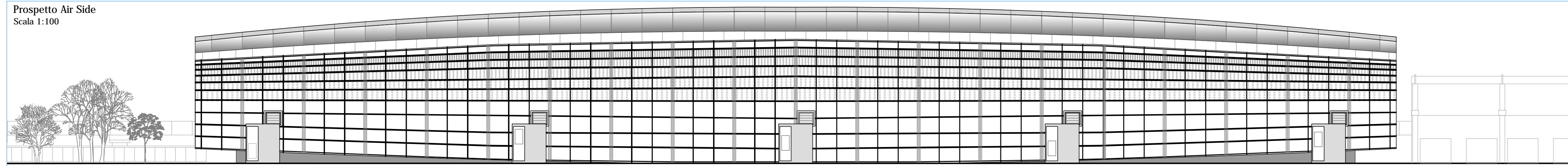
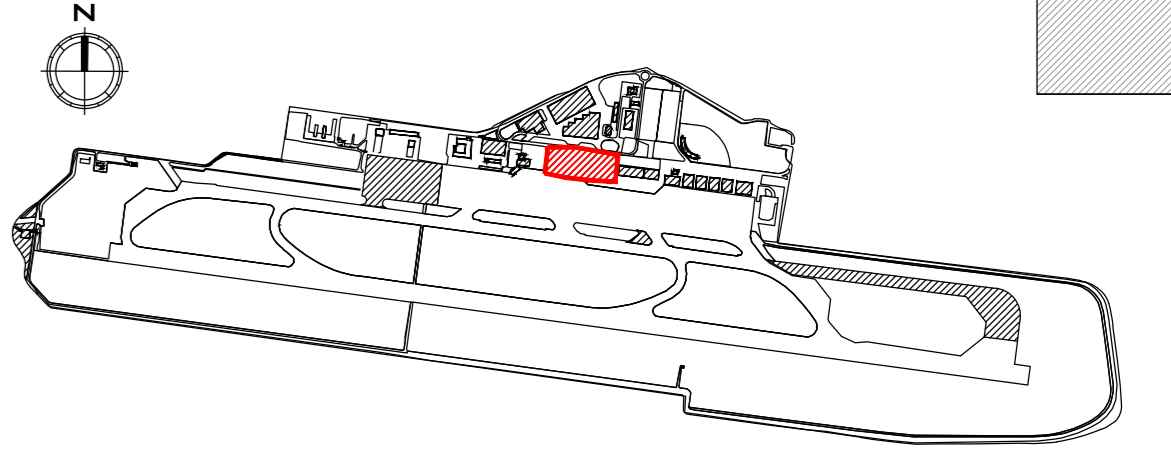


A Aerostazione passeggeri



A Aerostazione passeggeri



ENAC ENTE NAZIONALE PER L'AVIAZIONE CIVILE
AEROPORTO CIVILE DI LAMEZIA TERME (CZ)
LAMEZIA SACAT AIRPORT S.A.Cal. S.p.a. Società Aeroportuale Calabrese

PIANO DI SVILUPPO AEROPORTUALE 2012-2027

TITOLO
Tavola QPGT -T02
Approfondimento progettuale
Aerostazione passeggeri

sigla: PSA-T06 scala: Varie revisione: 1 data: FEBBRAIO 2014

REDAZIONE DOCUMENTAZIONE PROGETTUALE INTEGRATA PER GLI INTERVENTI DI PIANO DI SVILUPPO AEROPORTUALE iride

RESPONSABILE UNICO DEL PROCEDIMENTO E POSTHOLDER PROGETTAZIONE E MANUTENZIONE INFRASTRUTTURE E SISTEMI ING. FERDINANDO SARACCO

APPROVAZIONE ENAC SIS