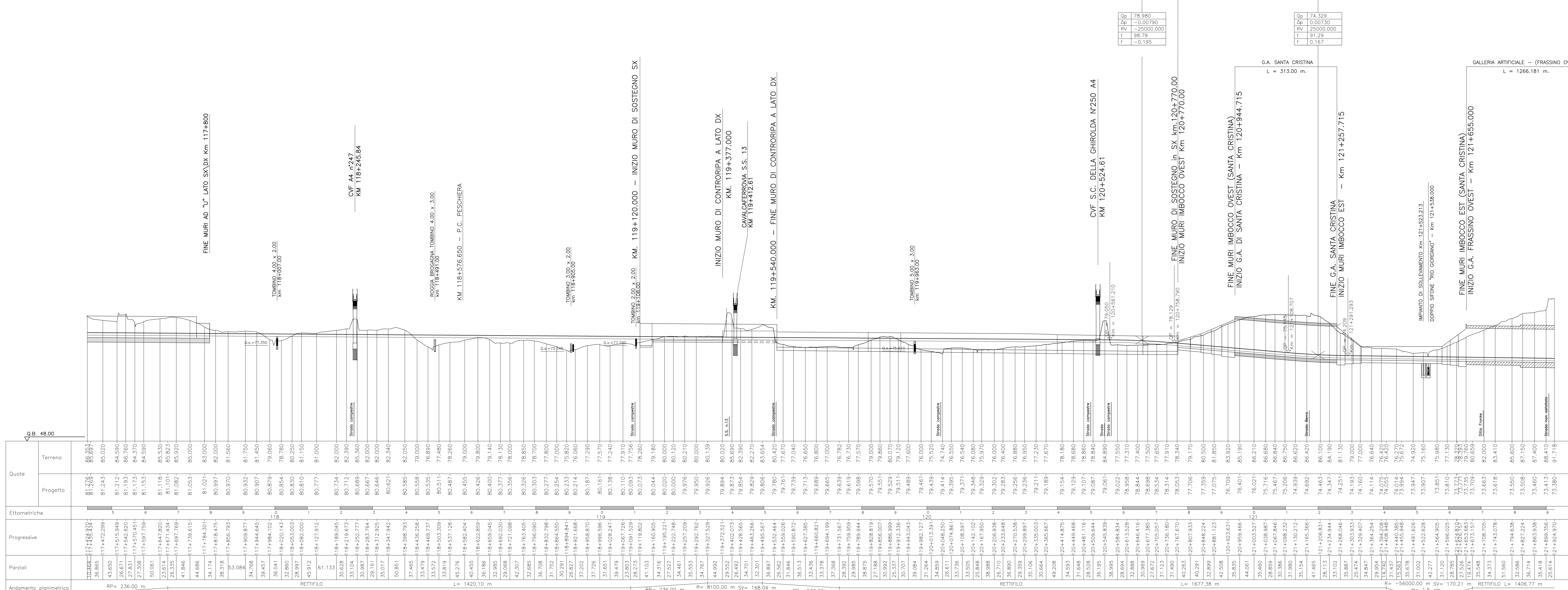


Table with 3 columns: Provincia, Comune, and Livelle. It contains data for DESENZANO DEL GARDA, POZZOLENGO, and PESCHIERA DEL GARDA, including elevation (L) and slope (DH) values.

Table with 2 columns: DESCRIZIONE and CODICE. It provides a header for the drawing reference system.



NOTE GENERALI and CARATTERISTICHE DEI MATERIALI sections, providing project specifications and material requirements.

Table with 3 columns: Provincia, Comune, and Livelle. It contains data for BRESCIA, PESCHIERA DEL GARDA, and VERONA, including elevation (L) and slope (DH) values.

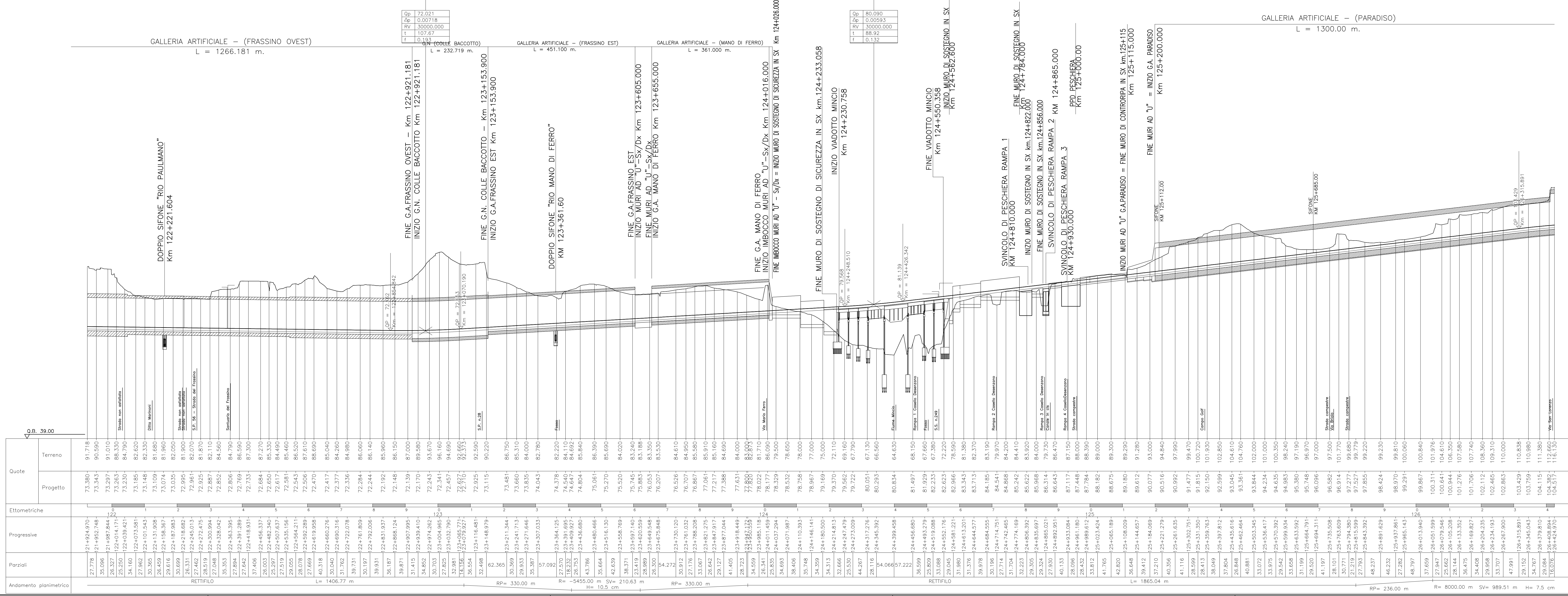


Table with 5 columns: Quote, Terrano, Progetto, Etmometriche, Progressive, Partizi, and Andamento planimetrico. It contains detailed data for the entire project length.

Administrative and project information section including: COMMITTEE (R.F.I. Gruppo Ferrovie dello Stato Italiane), GENERAL CONTRACTOR (Cepav due), PROJECT DESCRIPTION (INFRASTRUTTURE FERROVIARIE STRATEGICHE DEFINITE DALLA LEGGE OBIETTIVO N. 443/01), PROJECT NUMBER (1:5000/1:500), and PROJECTOR (Sapem S.p.a. COMM. 032121).

Table with 5 columns: Rev., Data, Descrizione, Redatto, Verificato, and Approvato. It contains a revision table with 4 rows of updates.