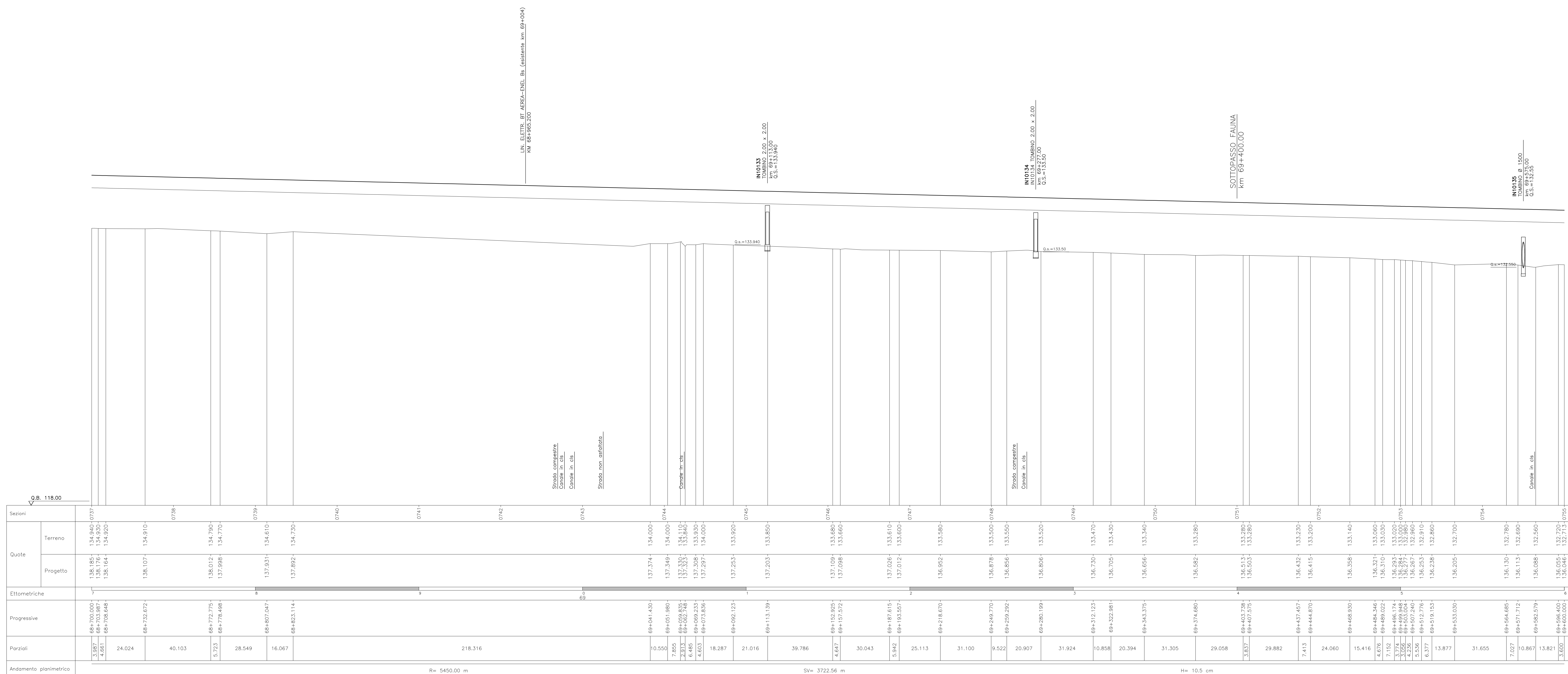


Provincia		BRESCIA
Comune		ROVATO
Livellette	DISCESA L= 1864.14 m	DH= -4.43 m
Progressive livellette		p= -0.00238



Sezioni	Quote		Ettometriche	Progressive	Parioli	Andamento planimetrico
	Terreno	Progetto				
0737	138.885	138.107	0	68+700.000	3.97	24.024
0738	138.830	138.107	0	68+703.967	4.00	
0739	138.830	138.107	0	68+708.648	4.03	40.103
0740	138.830	138.107	0	68+712.612	4.06	
0741	138.830	138.107	0	68+716.576	4.09	57.23
0742	138.830	138.107	0	68+720.540	4.12	
0743	138.830	138.107	0	68+724.504	4.15	28.549
0744	138.830	138.107	0	68+728.468	4.18	
0745	138.830	138.107	0	68+732.432	4.21	16.067
0746	138.830	138.107	0	68+736.396	4.24	
0747	138.830	138.107	0	68+740.360	4.27	218.316
0748	138.830	138.107	0	68+744.324	4.30	
0749	138.830	138.107	0	68+748.288	4.33	10.550
0750	138.830	138.107	0	68+752.252	4.36	
0751	138.830	138.107	0	68+756.216	4.39	7.855
0752	138.830	138.107	0	68+760.180	4.42	
0753	138.830	138.107	0	68+764.144	4.45	2.813
0754	138.830	138.107	0	68+768.108	4.48	
0755	138.830	138.107	0	68+772.072	4.51	6.485
0756	138.830	138.107	0	68+776.036	4.54	
0757	138.830	138.107	0	68+780.000	4.57	4.603
0758	138.830	138.107	0	68+783.964	4.60	
0759	138.830	138.107	0	68+787.928	4.63	18.287
0760	138.830	138.107	0	68+791.892	4.66	
0761	138.830	138.107	0	68+795.856	4.69	21.016
0762	138.830	138.107	0	68+799.820	4.72	
0763	138.830	138.107	0	68+803.784	4.75	39.786
0764	138.830	138.107	0	68+807.748	4.78	
0765	138.830	138.107	0	68+811.712	4.81	30.043
0766	138.830	138.107	0	68+815.676	4.84	
0767	138.830	138.107	0	68+819.640	4.87	25.113
0768	138.830	138.107	0	68+823.604	4.90	
0769	138.830	138.107	0	68+827.568	4.93	31.100
0770	138.830	138.107	0	68+831.532	4.96	
0771	138.830	138.107	0	68+835.496	4.99	9.522
0772	138.830	138.107	0	68+839.460	5.02	
0773	138.830	138.107	0	68+843.424	5.05	20.907
0774	138.830	138.107	0	68+847.388	5.08	
0775	138.830	138.107	0	68+851.352	5.11	31.924
0776	138.830	138.107	0	68+855.316	5.14	
0777	138.830	138.107	0	68+859.280	5.17	10.858
0778	138.830	138.107	0	68+863.244	5.20	
0779	138.830	138.107	0	68+867.208	5.23	20.394
0780	138.830	138.107	0	68+871.172	5.26	
0781	138.830	138.107	0	68+875.136	5.29	31.305
0782	138.830	138.107	0	68+879.100	5.32	
0783	138.830	138.107	0	68+883.064	5.35	29.058
0784	138.830	138.107	0	68+887.028	5.38	
0785	138.830	138.107	0	68+890.992	5.41	29.882
0786	138.830	138.107	0	68+894.956	5.44	
0787	138.830	138.107	0	68+898.920	5.47	24.060
0788	138.830	138.107	0	68+902.884	5.50	
0789	138.830	138.107	0	68+906.848	5.53	15.418
0790	138.830	138.107	0	68+910.812	5.56	
0791	138.830	138.107	0	68+914.776	5.59	4.670
0792	138.830	138.107	0	68+918.740	5.62	
0793	138.830	138.107	0	68+922.704	5.65	7.150
0794	138.830	138.107	0	68+926.668	5.68	
0795	138.830	138.107	0	68+930.632	5.71	3.724
0796	138.830	138.107	0	68+934.596	5.74	
0797	138.830	138.107	0	68+938.560	5.77	3.506
0798	138.830	138.107	0	68+942.524	5.80	
0799	138.830	138.107	0	68+946.488	5.83	5.536
0800	138.830	138.107	0	68+950.452	5.86	
0801	138.830	138.107	0	68+954.416	5.89	6.377
0802	138.830	138.107	0	68+958.380	5.92	
0803	138.830	138.107	0	68+962.344	5.95	13.877
0804	138.830	138.107	0	68+966.308	5.98	
0805	138.830	138.107	0	68+970.272	6.01	31.655
0806	138.830	138.107	0	68+974.236	6.04	
0807	138.830	138.107	0	68+978.200	6.07	10.867
0808	138.830	138.107	0	68+982.164	6.10	
0809	138.830	138.107	0	68+986.128	6.13	13.821
0810	138.830	138.107	0	68+990.092	6.16	
0811	138.830	138.107	0	68+994.056	6.19	3.500
0812	138.830	138.107	0	68+998.020	6.22	

COMMITENTE:

ALTA Sorveglianza:

GENERAL CONTRACTOR:

INFRASTRUTTURE FERROVIARIE STRATEGICHE DEFINITE DALLA LEGGE OBIETTIVO N. 443/01  
 LINEA A.V. /A.C. TORINO - VENEZIA Tratta MILANO - VERONA  
 Lotto funzionale Brescia-Verona  
 PROGETTO DEFINITIVO

PROFILO LONGITUDINALE LINEA A.C.  
 DA KM 68+700.000 A KM 69+600.000  
 TAVOLA N° 46

ALTA Sorveglianza:

COMMESSA	LOTTO	FASE	ENTE	TIPO DOC.	OPERAZIONE	PROGR.	REV.	SCALA
IN05	00	D	E2	F7	IF0001	046	1	1:1000/1:100

Rev.	Data	Descrizione	Redatto	Data	Verificato	Data	Approvato	Data	Aut. / Data
0	31/03/14	EMMISSIONE PER CDS	M.T.	31/03/14	GHELFI	31/03/14	LAZZARI	31/03/14	Cepav due
1	01/07/14	REVISIONE PER CDS		01/07/14		01/07/14		01/07/14	Project director
2									
3									

Salpem S.p.a. COMM. 032121 | Data: 01/07/14 | Doc. N. IN0500E2F7IF0010461

Progetto cofinanziato dalla Unione Europea | CLP: FB1H1000000008